

GOLDFIELDS REGION
ANALYSIS OF PUBLIC SUBMISSIONS
1994

*Submissions on the Regional Management Plan
for the Goldfields Region*

Department of Conservation and Land Management
for the
National Parks and Nature Conservation Authority
and the
Lands and Forest Commission
Perth, Western Australia

CONTENTS

	Page
INTRODUCTION	iii
ANALYSIS OF PUBLIC SUBMISSIONS	iii
ANALYSIS TABLE	iv
General Comments	1
Maps	5
THE DEPARTMENT OF CONSERVATION AND LAND MANAGEMENT	
1.0 Origin, Structure, Mission and Objectives of CALM	5
2.0 Management	6
3.0 The Planning Process	6
THE GOLDFIELDS REGION RESOURCES AND ADMINISTRATION	
4.0 Physical and Biological Resources	6
5.0 History of Land Use	7
6.0 Local Government and Population	8
7.0 Regional Organisation	8
PUBLIC LANDS MANAGED BY CALM	
8.0 Management of Conservation Reserves	9
9.0 Existing Public Lands Managed by CALM	10
10.0 Proposed Changes of Tenure, Purpose, Vesting or Boundaries of Public Lands Managed by CALM	11
11.0 Proposed Additions to Public Lands Managed by CALM	24
12.0 Sites with High Conservation Values not Intended for Reservation	34
ISSUES OF CONSERVATION AND LAND MANAGEMENT IN THE GOLDFIELDS	
13.0 Conservation	36
14.0 Environmental Protection	40
15.0 Recreation and Tourism	44
16.0 Community Involvement	47
17.0 Production and Minor Forest Produce	49
18.0 Research	51
IMPLEMENTING THE PLAN	
19.0 Term of this Plan	51

INTRODUCTION

This document summarises submissions to the Draft Management Plan (DMP) for CALM's Goldfields Region. The Draft Plan was released for public comment on 5 August 1992, by the acting Environment Minister, the Hon. Ian Taylor, on behalf of the Hon. Bob Pearce. The Plan was available for comment for a period of four months to 4 December 1992, however, if the Department had been notified before the closing date, late submissions were accepted.

The Plan was distributed to a large number of Government agencies, tertiary institutions, conservation and recreation groups, local authorities and individuals. In addition, copies of the Plan were available for purchase from Departmental offices. Copies of the Plan could also be viewed at local libraries, Shire offices and offices of the Department.

After release of the Plan, advertisements were placed in the Government Gazette as well as local and State newspapers, advising that the Plan was available for public comment. In addition, articles featuring aspects of the Plan appeared in several newspapers, and television and radio coverage was given to the Plan. Letters advising of the Plan's availability were also sent direct to numerous individuals and organisations.

Number and Origin of Submissions Received

A total of 77 submissions was received (see Appendix 1 for a list of submitters). All of these were substantive submissions, i.e. no proformas nor petitions were received.

A breakdown of the origin of submissions is as follows:

Industry/business	27	35.1%
State Government	10	13.0%
Pastoralists	11	14.3%
Community - individuals	8	10.4%
Community - clubs or organisations	8	10.4%
Local Government	5	6.5%
Educational Institutions	1	1.2%
CALM staff	<u>7</u>	<u>9.1%</u>
	77	100.0%

ANALYSIS OF PUBLIC SUBMISSIONS

Submissions to the Goldfields Region Draft Management Plan were reviewed in three stages:

- (A) As submissions generally commented on more than one section of the Draft Plan, the comments were summarised and allocated to the relevant sections of the Plan.
- (B) The summarised comments were analysed according to a set of criteria.

1. Changes *were* made to the Draft Plan if a submission:
 - (a) provided additional resource information of direct relevance to management;
 - (b) provided additional information on affected user groups of direct relevance to management;
 - (c) indicated a change in (or clarified) Government legislation, management commitment or management policy;
 - (d) proposed strategies that would better achieve management goals and objectives; or
 - (e) indicated omissions, inaccuracies or a lack of clarity.

2. Changes were *not* made to the Draft Plan if:
 - (a) there was clear support for the draft proposals;
 - (b) a neutral statement was offered, or no change was sought;
 - (c) the submission addressed issues beyond the scope of the Plan;
 - (d) the submission made points which were already in the Plan, or had been considered during Plan preparation;
 - (e) existing strategies and recommendations appeared to be the most practical, where submissions were in conflict with others or where resources are limited; or
 - (f) the submission contributed options which were not feasible (generally due to some aspect of existing legislation or Government policy).

The analysis process is illustrated in the flow chart opposite which also indicates what action was taken in cases where the comment did not lead to a change in the Plan.

- (C) The Draft Management Plan was amended where necessary. Minor editorial changes were also made.

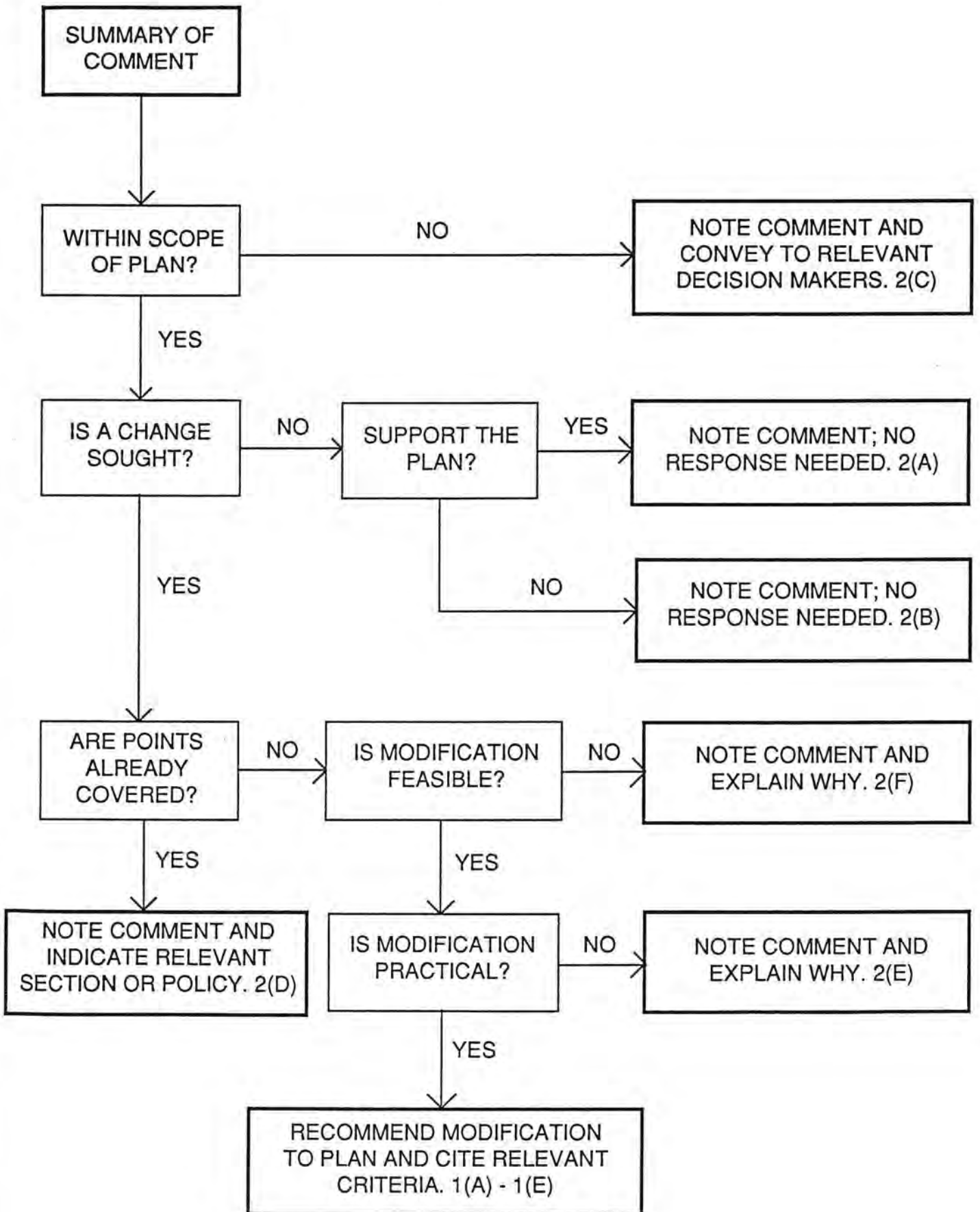
Comments made in submissions have been assessed entirely on the cogency of points raised. No subjective weighting has been given to any submission for reasons of its origin or any other factor which would give cause to elevate the importance of any submission above another.

ANALYSIS TABLE

The Analysis Table in this document contains:

- The number of different comments made about each section of the Draft Plan;
- The number of submissions received making each comment;
- A summary of each comment made on the Draft Plan;
- An indication of what action was taken in the Final Plan, or a discussion on why the comment did not result in an amendment to the Plan;
- An indication whether or not the comment resulted in an amendment to the Final Plan; and
- The criterion by which each comment was assessed.

ANALYSIS PROCESS



COMMENT NUMBER	NO. OF SUBS	SUMMARY OF COMMENT	SUBMISSION NUMBERS	DISCUSSION / ACTION TAKEN	PLAN AMENDED	CRITERIA
		General Comments <i>29 submissions.</i>				
1	1	Commended the excellent background and reference material provided in the DMP.	2		No	2(a)
2	2	Criticised the lack of discussion regarding the significance of mining in the region. WA should adopt the SA regional reserve concept to distinguish between core ecological areas and areas of lesser importance.	11, 42	Text amended to recognise significance of mining.	Yes X	1(b)
3	1	Should not continue with the DMP until after the State election, as mining is the life blood of the goldfields.	16	Text amended to be consistent with new Government policy.	Yes X	1(c)
4	1	No A, B or C class Reserves should be made into national parks.	16	Conservation through reservation is Government policy.	No	2(f)
5	1	Supports the recommendations and strategies for the future.	19		No	2(a)
6	1	Questions the spelling of Mangkili Claypan Nature Reserve.	29	Mangkili is correct.	No	2(d)
7	1	"Use of land" would be more appropriate than management when land is not in CALM's control.	32	This preface applies only to draft and not to the final plan.	No	2(c)
8	1	CALM casts a long shadow and people fear the tentacles of power. CALM has a lot to offer the development of the land that precluded locking it up.	34		No	2(c)
9	1	Education of mining and exploration personnel to know how to identify, protect rare and endangered flora and fauna.	7	CALM already has a proactive role in advising mining companies, i.e. rare flora, induction material, newsletters.	No	2(d)
10	1	Criticises the DMP as a land grab, without an umpire in the process, or right of appeal. Questions the impartiality of the submission reviewers.	12	Conservation through reservation is Government policy.	No	2(f)
11	2	Criticises CALM for trying to gauge public opinion to the DMP by the amount of interest shown and using that as an endorsement of the DMP. Recommended a SA program to charge entry to parks and reducing the restrictive powers to nil for very little on other land users.	15, 27		No	2(d)

COMMENT NUMBER	NO. OF SUBS	SUMMARY OF COMMENT	SUBMISSION NUMBERS	DISCUSSION / ACTION TAKEN	PLAN AMENDED	CRITERIA
12	1	Argued strongly against the principle and increasing of reserves as presently administered. More detailed direction on vermin control, limited grazing and protection should be identified before adding reserves to the system.	25	Conservation through reservation is Government policy.	No	2(f)
13	1	CALM should demonstrate that it can successfully manage the areas it has vested in it, before considering expansion, which could economically affect other sections of the community. The DMP does little to further the cause of conservation as few direct management actions are proposed and there is no comment on staffing or funding.	26	Proposed increase in staff needed to implement the plan will be indicated in the RMP.	Yes X	1(d)
14	2	The criteria used in assessing submissions would not encourage an acceptable level of public participation.	32, 48	Criterion 2(e) will be reworded.	Yes X	1(e)
15	2	The Goldfields region is too large to be managed from one office, and alternatively it may need to have operational outstations established or even be sub-divided.	40, 48		No	2(f)
16	1	Expressed concern over the boundaries of land that conflict with other land users. Restrict boundaries to the immediate area concerned.	15	Conservation of functioning ecosystems and representative landforms does require reservation of larger areas.	No	2(f)
17	1	Expressed concern that options will not be considered if they conflict with departmental policies and questions if these policies are open for public scrutiny.	42	Government plans have to conform to Government policy. CALM policies are "public".	No	2(f)
18	1	It is essential to distinguish between mining and exploration before any meaningful planning can take place. Low impact exploration should be considered in arid inland Australia where the preservation of these ecological systems are not at risk.	42	Although mining and exploration are both "mining" under the act, Section 14.5 could be amended to take on board CALM's recognition of the difference between the two.	Yes X	1(e)
19	1	Clarification is needed on figures given on page 77 that 98.8% of the region is available for ordinary exploration when the proposed increase of 10,532,400 ha or 13.6% suggests otherwise.	42	Mining amendments made in many cases.	Yes X	1(c)
20	1	There should be more recreational reserves around Kalgoorlie.	46	Recreation close to Kalgoorlie is well catered for by CALM.	No	2(d)
21	1	Passive mineral exploration could be carried out by trained bureau of mineral resources and the results made available to mining companies.	46		No	2(d)

COMMENT NUMBER	NO. OF SUBS	SUMMARY OF COMMENT	SUBMISSION NUMBERS	DISCUSSION / ACTION TAKEN	PLAN AMENDED	CRITERIA
22	1	Contact should be made with local authorities before initiating any changes in regard to town planning schemes by way of appropriate reservations.	50	This issue was discussed with city of Kalgoorlie/Boulder and DPUD - an Interim Development Order will not affect reserve proposals. Once town planning scheme is implemented local government must be informed of proposals.	No	2(d)
23	2	Commends the authors of the plan on its presentation, especially the explanation and justification of land use proposals, although the maps have not really enhanced the document.	52, 72		No	2(b)
24	1	"Departmental" should be placed in front of strategies to clarify the source. (a) SCRMP should be added to references; (b) perhaps add Sections 8 and 9 of SCRMP to Section 19.0 of GRDMP.	52	(a) added SCRMP to references. (b) added sections 8.0 & 9.0 from SCRMP to section 19.0 of GRDMP.	No Yes Yes	2(d) 1(e) 1(e)
25	1	A vast proportion of land vested in CALM becomes unavailable for use because it is a CALM reserve. Problems in the past with gravel reserves on CALM lands have caused stakeholders to seek advice to have all gravel pits vested in council to preserve access.	56		No	2(f)
26	1	The industrial/engineering heritage is not limited to mines and mining settlements and should be acknowledged in Section 4.0 of the document.	57	Minor change of text required page 65, Section 13.4.	Yes	1(a)
27	1	With CALM's proposal to take over management of some water supply reserves and other reserves, perhaps research will be carried out with the Water Authority on the original purpose for many of the sites.	57	CALM does manage for heritage values to a limited extent.	No	2(d)
28	1	In Section 2, 2(e) it would seem CALM has already selected a management course before having received public submissions.	62	Criterion 2(e) will be reworded.	Yes	1(e)
29	1	There was a lack of formal consultation between CALM and this mining company on future proposals before releasing this document.	62	Consultation with every affected company is inappropriate prior to production of DRAFT management plan.	No	2(f)
30	1	Responsibly managed mineral exploration is not inconsistent with conservation values, and the community should be informed of the loss of potential in mineral wealth.	62	Text amended to be consistent with new Government policy.	No	2(f)

5

COMMENT NUMBER	NO. OF SUBS	SUMMARY OF COMMENT	SUBMISSION NUMBERS	DISCUSSION / ACTION TAKEN	PLAN AMENDED	CRITERIA
31	1	Exploration in the mining industry needs adequate access for exploration. This needs to be built into land use management.	63	Plan will be consistent with Government policy , but the text will be amended to be consistent with new Government policy.	No	2(f)
32	1	Disagrees with current Government Policies which do not allow for mineral exploration and mining on conservation land in all categories and classification up to and including "A" class Reserves (National Parks). (a) No attempt has been made to amend the Act. (b) The policy which precludes mineral exploration and potential mining is in direct conflict with the statute. (c) Until the current Government changes their policy, the conflict between the mining industry and the departments charged with the State land conservation, will continue. (d) Expressed disappointment that politics have been allowed to govern important issues as the conservation of WA and the development of the mining industry.	64	Government policy is beyond the scope of plan, the text will be amended to be consistent with new Government policy.	No	2(f)
33	1	When mining companies are prospecting, the clear lines could be made with a roller instead of a bulldozer, refer to article page 3, "Petroleum Gazette" Vol 27, No. 5 1992/3.	70	Operational matter beyond scope of GRMP.	No	2(c)
34	1	More Aboriginal participation on Board of NPNCA is needed as consideration and sensitivity to Aboriginal land tenure issues is warranted.	75	Structure of NPNCA beyond scope of plan.	No	2(c)
35	1	CALM should acknowledge the existence and function of the Wongi Regional Council in the Management Plan.	75	Agreed.	Yes	1(e)
36	2	Criticises the lack of consultation and dialogue before large areas of land are locked up on poorly documented conservation values, and evaluate the impact of making uninformed management decisions.	49, 67	Mining amendments made in many cases.	Yes X	1(a)
37	1	A flowchart showing the sequence of events in the implementing of land use proposals would overcome peoples fears that after the final plan there would be no consultation - Section 8.0 in the SCRMP.	52	Agree.	Yes	1(e)
38	1	Any decisions or action should be postponed on proposed changes to land tenure or use until consultations and clarification of MABO are complete.	75	To be consistent with new Government policy.	No	2(c)

COMMENT NUMBER	NO. OF SUBS	SUMMARY OF COMMENT	SUBMISSION NUMBERS	DISCUSSION / ACTION TAKEN	PLAN AMENDED	CRITERIA
39	1	CALM should revise its boundaries to reflect patterns of human use of land along with the transport, cultural and historical considerations.	75	Goldfields Region boundaries do in fact reflect patterns of human use, transport etc.	No	2(f)
40	1	Recommends acknowledgement of traditional Aboriginal land use in existing CALM tenured land, and the conditions attached to the entry of these areas.	75	These matters are addressed.	No	2(d)
41	1	A more independent and representative body should evaluate submissions and make recommendations.	77	Goldfields Regional Management Plan is a conservation plan which is reviewed by NPNCA who represent community interests.	No	2(c)
42	1	The State can ill afford to have 73.8% of the eastern Goldfields in a non-productive capacity.	77	The lands referred to are available to mining and amenity use and, as such, are not non-productive.	No	2(d)
43	1	Every incentive by Government should be given to increasing the size of the pastoral industry in the Goldfields Region from the current 24% to say 40%.	77	It is not Government policy to increase the area of lands under pastoral management.	No	2(c)
		Maps <i>3 submissions.</i>				
1	1	Map 1 should be titled 'CALM Managed Public Lands' and this should apply in the text when mentioning CALM land/estate.	52	Text amended.	Yes	1(e)
2	1	Map 2 needs to have a legend and a bit of general touching up.	52	Text amended.	Yes	1(e)
3	1	Map 3 is difficult to follow, the legend should have shading to "proposed CALM (managed) estate".	52	Text amended.	Yes	1(e)
4	1	Questions Queen Victoria Spring Nature Reserve not being labelled.	29	Not all reserves are named at this scale. See other maps.	No	2(d)
5	1	Criticised the lack of information shown in locating some of the proposed reserves on maps.	4	Not appropriate to provide detailed maps in this document. Reserve numbers allow location from other sources.	No	2(d)
		1.0 THE DEPARTMENT OF CONSERVATION AND LAND MANAGEMENT <i>1 submission.</i>				
1	1	The definition of Conservation on page 6 is inadequate and inappropriate for application to cultural heritage material.	57	Definition is Government policy accepted in State Conservation Strategy.	No	2(f)

COMMENT NUMBER	NO. OF SUBS	SUMMARY OF COMMENT	SUBMISSION NUMBERS	DISCUSSION / ACTION TAKEN	PLAN AMENDED	CRITERIA
		2.0 MANAGEMENT <i>1 submission.</i>				
1	1	2.1.6 Tenure should start with the words "Can be changed..."	52	Text amended.	Yes	1(e)
2	1	2.1.7 Tenure should start with the words "Can be changed..."	52	Text amended.	Yes	1(e)
3	1	Where are the criteria for State forest and Timber Reserve? Miscellaneous Reserve would be worth mentioning as well.	52	Text amended.	Yes	1(e)
		3.0 THE PLANNING PROCESS <i>2 submissions.</i>				
1	1	The plan would be more readable and interesting if illustrations and cartoons were included.	2		No	2(f)
2	1	"Compatible Operations" should be mentioned in plan.	52	Text amended.	Yes	1(e)
		4.0 PHYSICAL AND BIOLOGICAL RESOURCES <i>4 submissions.</i>				
1	1	Recent land use practices have determined the current state of the environment's flora and fauna.	46	The factors causing the degradation of the environment in the past, are now being managed effectively.	No	2(c)
2	1	An explanation of why the fifth sub-region is not indicated, should be added here.	52	Text amended.	Yes	1(e)
3	1	The statement in paragraph 1 regarding the Greenhouse Effect is not supported by existing information.	67	Text amended.	Yes X	1(a)
4	1	Detailed biological survey to record the location and distribution of all remaining species should be considered as a matter of urgency.	46	Agreed, but funds are scarce.	No	2(f)
		4.1 Eucalypt Woodlands <i>No submissions.</i>				
		4.2 Mulga Woodlands <i>1 submission.</i>				
1	1	A number of species and subspecies within the traditionally defined "mulga" assemblage mentioned in a recent work by Randell (1992) should be made.	29	Text amended.	Yes	1(e)

COMMENT NUMBER	NO. OF SUBS	SUMMARY OF COMMENT	SUBMISSION NUMBERS	DISCUSSION / ACTION TAKEN	PLAN AMENDED	CRITERIA
		4.3 Nullarbor Plain <i>No submissions.</i>				
		4.4 Great Victoria and Gibson Deserts <i>2 submissions.</i>				
1	1	Warburton Region should be included as a separate biological sub-region. High species diversity, not found in surrounding desert, due to high rainfall and geology.	29	Text and map amended.	Yes	1(a)
2	1	If jargon like "Pleistocene aeolian" is to be used then the terms should be explained in a reference/glossary.	52	Some technical usage is unavoidable. Glossary added at end of plan.	Yes	1(e)
		4.5 Lake Frontage-Chenopod Shrubland <i>No submissions.</i>				
		4.6 State of Biological Knowledge of Goldfields Region <i>2 submissions.</i>				
1	1	The first sentence implies the whole region has been systematically and intensively surveyed.	29	Text amended to clarify this.	Yes	1(e)
2	1	This statement should be clarified because, if correct, it would be more an indictment than a distinction when it is quantified. The cost of research to date must be infinitesimally small compared to the benefit derived from the removal of so much timber.	46	Text amended to clarify this.	Yes	1(e)
		5.0 HISTORY OF LAND USE <i>4 submissions.</i>				
1	1	Criticises the superficial analysis of the mineral resources industry and its importance to the Region, State and Commonwealth.	42	Text amended.	Yes	1(b)
2	1	The mining and pastoral industries have determined how we currently manage the area. Transient populations do not stay in areas long enough to be concerned or involved in environmental issues.	46	Beyond the scope of the plan.	No	2(c)
3	1	Many urban Aboriginal people would argue that they have never lost identity with their culture and lands.	52		No	2(d)
4	1	Should include, that virtually all of this timber was cut, gathered and transported by private industry.	57	Beyond the scope of the plan.	No	2(c)

7

COMMENT NUMBER	NO. OF SUBS	SUMMARY OF COMMENT	SUBMISSION NUMBERS	DISCUSSION / ACTION TAKEN	PLAN AMENDED	CRITERIA
		6.0 LOCAL GOVERNMENT AND POPULATION <i>No submissions.</i>				
		7.0 REGIONAL ORGANISATION <i>1 submission.</i>				
1	1	The management plan should include a policy for the training/awareness of departmental field officers in the recognition of potential cultural heritage values in the region.	57	CALM policy and training are discussed in detail in other documents.	No	2(c)
		7.1 Personnel <i>2 submissions.</i>				
1	2	The Goldfield Regional Office is inadequately resourced to effectively meet the requirements of CALM's Strategic Plan.	40, 41	Future staffing requirements will be indicated in the plan.	Yes	1(d)
2	1	The Goldfields Dust Abatement Committee officer and employee are irrelevant to this plan and that the functions of this Committee be under the Boulder-Kalgoorlie City Council.	41	Text amended consistent with KBULCG.	Yes	1(d)
3	1	The staffing structure of the CALM office is too heavily weighed to the sandalwood industry, and resources devoted to this area could be more profitably directed to other areas.	41		No	2(d)
		7.2 Infrastructure <i>No submissions.</i>				
		7.3 Management Capability Zones <i>4 submissions.</i>				
1	2	Inadequate staffing, lack of resources and volume of area, makes response time unacceptably high for this region.	40, 41	Management "intensity" is less in remote and large reserves, and involves co-operation with neighbours, mining companies, etc.	No	2(d)
2	1	It is unrealistic to expect current staffing levels to provide effective management given the area (30% of the State). Greater manoeuvrability and flexibility offered by a helicopter may outweigh the financial cost of such a vehicle.	47		No	2(d)

88

X

COMMENT NUMBER	NO. OF SUBS	SUMMARY OF COMMENT	SUBMISSION NUMBERS	DISCUSSION / ACTION TAKEN	PLAN AMENDED	CRITERIA
3	1	The draft management plan states CALM's management capability within this area is severely constrained by remoteness, lack of access and sparse population. This leads to unnecessary delays should CALM personnel be required to supervise exploration programmes in this area. 7.4 Regional Office Services <i>No submissions.</i> 8.0 MANAGEMENT OF CONSERVATION RESERVES <i>7 submissions.</i>	51	This comment refers principally to fire control. Text amended to clarify this point.	Yes <input checked="" type="checkbox"/>	1(e)
1	1	Clarification is required for the statement "that no use considered detrimental to the 'priority use' is permitted in Reserves, despite heading the section "multiple use".	42		Yes <input checked="" type="checkbox"/>	1(e)
2	1	The plan ignores the legitimate aspiration of other land users in the region, and the concept of multiple land use has been considered only rarely.	48	The authors disagree.	No	2(d)
3	1	This section should be titled "Public Lands Management and Proposed for Management by CALM". As there is no guarantee mining will take place perhaps changing text to "mining would be" and "mining could be" throughout the Section.	52	Text amended.	Yes <input type="checkbox"/>	1(e)
4	1	Multiple use planning would make "nature and heritage conservation" one of the six land use priorities.	57		No	2(c)
5	1	Strongly supports a multiple use concept for conservation areas which provides the flexibility necessary to allow activities such as exploration and mining.	63	Text amended to be consistent with new Government policy.	Yes <input checked="" type="checkbox"/>	1(c)
6	1	A simple matrix as in the SCRMP would avoid confusion over the compatibility of land uses with various categories of reserves.	67	Agreed - text amended.	Yes <input checked="" type="checkbox"/>	1(e)
7	1	Warns of any change to boundaries, of status or land use would not be supported until organisations, communities, individuals have had time to become informed.	75	Text amended to be consistent with new Government policy.	Yes <input type="checkbox"/>	1(c)

6

COMMENT NUMBER	NO. OF SUBS	SUMMARY OF COMMENT	SUBMISSION NUMBERS	DISCUSSION / ACTION TAKEN	PLAN AMENDED	CRITERIA
		9.0 EXISTING PUBLIC LANDS MANAGED BY CALM <i>1 submission.</i>				
1	1	The EPA numbers should be stated in the text for the areas concerned, or a table listing all the proposals.	4	Point covered; see pages 48,49 and 50 of draft plan.	No	2(d)
		9.1 National Parks <i>4 submissions.</i>				
1	1	An enquiry should be held into the upgrading of Goongarrie into a National Park.	15		No	2(f)
2	1	Boorabbin and Goongarrie National Parks, not having Ranger staff, and at present undeveloped show the incapacity to deal with current conservation areas.	26	Text amended.	Yes X	1(e)
3	1	Better evidence is needed to justify the proposal for National Park status if fauna and flora is poorly known.	26	Full knowledge of an area is not required to justify values.	No	2(d)
4	1	Gravel reserves may be located in the Boorabbin area and once they have been identified it is expected they will be set aside in leases within the Park.	28	Resource survey of proposed Goldfields Woodland NP required prior to gazettal.	Yes	1(b) X
5	1	"Agamid" needs to be explained if it is to be broadly understood.	52	Listed in glossary.	Yes	1(e)
6	1	There must be a clearer way to describe a "functional National Park".	52	Text amended.	Yes	1(e)
		9.2 State Forests and Timber Reserves <i>No submissions.</i>				
		9.3 Sandalwood Reserves <i>1 submission.</i>				
1	1	"Phenology" needs an explanation.	52	Listed in glossary.	Yes	1(e)
		9.4 Pastoral Leases <i>1 submission.</i>				
1	1	Map 2 is difficult to use for this purpose and as reference for the System 11 studies.	52	Text amended.	Yes	1(e)
		9.5 Arboreta <i>3 submissions.</i>				
1	1	Coolgardie Arboretum, Reserve No. 31983 should read 24 hectares.	4	Text amended	Yes	1(e)

10

COMMENT NUMBER	NO. OF SUBS	SUMMARY OF COMMENT	SUBMISSION NUMBERS	DISCUSSION / ACTION TAKEN	PLAN AMENDED	CRITERIA
2	2	The Kalgoorlie and Coolgardie Arboreta deserve greater security of tenure, and CALM is to be commended for the high standard of management for these arboreta.	40, 41		No	2(b)
10.0 PROPOSED CHANGES OF TENURE, PURPOSE, VESTING OR BOUNDARIES OF PUBLIC LANDS MANAGED						
<i>6 submissions.</i>						
1	1	'A' Class reserves should not be created unless based on sound research and after a public participation process, and that action should not limit access in terms of exploration.	32		No	2(f)
2	1	CALM may need to regularise any proposal to extend existing reserves, or create new reserves, by making a Form 1 Town Planning application to request approval to change land use.	32	Discussed at City of Kalgoorlie/Boulder and DPUD and Interim Departmental Order will not affect reserve proposals. Once town planning scheme is implemented local government must be informed of proposals.	No	2(d)
3	1	Supports all the recommendations in the section.	40		No	2(a)
4	1	Opposes the extension of any existing CALM or Nature Reserves as large areas of reserves along with the significant areas of land set aside for the use and benefit of Aboriginal inhabitants. A balance needs to be established to allow for the growth in tourism and control of our native flora and fauna, CALM does not contribute to the local economy, where tourism will. CALM should re-evaluate their present land policy and strive for greater responsibility of land they currently hold before they expand their land holdings.	43	CALM is a major contributor to tourism.	No	2(d)
5	1	Resources should be rationalised and increased to provide adequate cover for staffing, boundaries and funding.	55	Text amended.	Yes	1(d)
6	1	Concern expressed regarding the amount of land being declared as new Reserves or added to existing Reserves; it would seem excessive for the purpose.	63	Conservation through reservation requires protection of habitats and functional ecosystems not individual plants and animals.	No	2(f)
7	1	Although State forests in the SW are managed as multiple use reserves there is no agreed position between CALM and DOME as to the approach in the Goldfields Region. Such reserves have the potential to severely constrain tenement prospecting.	68	Text amended to be consistent with new Government policy.	Yes	1(c)

COMMENT NUMBER	NO. OF SUBS	SUMMARY OF COMMENT	SUBMISSION NUMBERS	DISCUSSION / ACTION TAKEN	PLAN AMENDED	CRITERIA
8	1	A lesser Reserve classification should apply to any area which does not meet the criteria for the central conservation area, or the total area be reduced to that which provides adequate but not excessive coverage. New cadastral areas should be defined.	63	Conservation of functioning ecosystems does require reservation of large areas not just particular "features".	No	2(d)
		10.1 Sandalwood Reserves to become State Forests <i>10 submissions.</i>				
1	1	Supports all Recommendations.	19		No	2(a)
2	1	Current access conditions should be retained for map codes CG4 and KBD9.	26		Yes <input checked="" type="checkbox"/>	1(c)
3	1	All Sandalwood cutters would be restricted and their businesses become unviable with this recommendation.	38		No	2(f)
4	2	The Lakeside Sandalwood Reserve should remain as a Reserve or excise the north-west corner of the Reserve.	39, 55	Excision to be implemented.	Yes <input checked="" type="checkbox"/>	1(d)
5	1	Should Kangaroo Hills State Forest be a Timber Reserve? The words "without restricting" would be better changed to "while allowing" as restrictions do apply.	52		Yes	1(e)
6	1	Resource potential should be reviewed before the proposal is enacted on Yallani, Scahill, Calooli, Kangaroo Hills, Emu Rocks, Wallaby Rock, Coonana, Lakeside, Majestic, Bullock Hills, Kambalda, Jaurdi and Mt Elvire.	63	Actions consistent with DOME review.	Yes <input checked="" type="checkbox"/>	1(d)
7	1	Due to the Government's refusal to administer land access to conservation lands in accordance with the provisions of the Statute, total opposition to either the creation of any new Reserves or National Parks or extension of any existing Parks and Reserves in the Eastern Goldfields must be recorded.	64	Text amended to be consistent with new Government policy.	Yes <input checked="" type="checkbox"/>	1(c)
8	1	Changing the tenure as proposed may have some unintended implications for the approval of mining tenements under the Mining Act. Discussion with DOME and the mining industry should take place to ensure there are no adverse effects before finalising the Management Plan.	67	Text amended to be consistent with new Government policy.	Yes <input checked="" type="checkbox"/>	1(c)

12

COMMENT NUMBER	NO. OF SUBS	SUMMARY OF COMMENT	SUBMISSION NUMBERS	DISCUSSION / ACTION TAKEN	PLAN AMENDED	CRITERIA
9	1	Coonana and/or Wallaby Rocks Timber Reserves should be available for grazing use.	77	This is untenable as grazing and conservation are incompatible and CALM recently spent public money, in consultation with the pastoralist, to fence stock out of these reserves.	No	2(e)
<p>10.2 Existing Timber Reserves to become State Forest <i>18 submissions.</i></p>						
1	1	The change of status from Timber Reserve to a State Forest would not restrict users such as mineral production. Section 2.1.1 deals with Nature Reserves; these contradictions give rise for concern.	10	Our mistake.	Yes <input checked="" type="checkbox"/>	1(e)
2	1	Implies CALM cannot manage the lands already vested in them and should not upgrade any reserves to "A" class due to the costly process for prospectors to gain the permission of both Houses of Parliament before mining could take place.	25	Text amended to be consistent with new Government policy.	Yes <input checked="" type="checkbox"/>	1(c)
3	2	Timber Reserve Kangaroo Hills and Calooli should be removed from CALM's reserve system and not upgraded to 'A' class due to the high prospectivity.	25, 14	Conservation of representative areas requires that this situation will inevitably arise.	No	2(f)
4	1	Has no objections to change providing current conditions are maintained on Map Code KBD11.	26		No	2(b)
5	1	Supports the decision to discontinue grazing in these Reserves, if they do contain some of the best examples of arid zone consideration should be given to upgrading them.	29	Discussion is required as grazing is legally concurrent on timber reserves.	Yes <input checked="" type="checkbox"/>	1(d)
6	1	Concern expressed over this Recommendation: (a) a large portion of the Goldfields is already under CALM's control and the proposed changes will place increased strain on their ability to manage their responsibilities. (b) including control of noxious weeds and vermin carried out by pastoralists at no cost to the taxpayer. (c) viability of pastoral leases by resumption of grazing leases. (d) lease boundaries must be surveyed accurately before any works or negotiations are commenced (e) the issue of legal access to Randells Reserve is not clear with the roads accessing the reserve being private rather than gazetted public roads.	37	Staffing will be consistent with CALM's Goldfield strategic plan. Text amended to acknowledge this.	Yes <input checked="" type="checkbox"/> Yes <input checked="" type="checkbox"/> No No No	1(d) 1(b) 2(d) 2(d) 2(d)

13

>

COMMENT NUMBER	NO. OF SUBS	SUMMARY OF COMMENT	SUBMISSION NUMBERS	DISCUSSION / ACTION TAKEN	PLAN AMENDED	CRITERIA
		(f) advice is being sought from Crown Law for these and other issues.			No	2(d)
7	1	The statement in this section regarding "these Reserves include some of the best examples of cut and uncut, arid zone eucalypt woodland in the world" is sweeping, but cut woodlands are widespread and better examples may be located elsewhere.	10	Text amended.	Yes X	1(e)
8	1	Upgrading this area will only cause conflict between CALM and the mining industry; leave it to DOME to monitor.	14	Conservation of representative areas requires that this situation will inevitably arise.	No	2(f)
9	1	Sandalwood cutters would be restricted and their businesses would become unviable with this recommendation.	38		No	2(f)
10	1	Agrees with the Recommendation to end these concessions.	41		No	2(a)
11	1	Strongly opposes the change of status of Kangaroo Hills Reserve due to the loss of land, stock and business viability.	44	Text amended.	Yes	1(b) X
12	1	Recommendation for the two Reserves is supported.	41		No	2(a)
13	1	Kangaroo Hills Timber Reserve should be declassified and replaced with another area that has a demonstrably unprospective greenstone belt.	53		No	2(f)
14	1	The boundaries of Kangaroo Hills Timber Reserve should be rationalised to excise the Burbanks area from the Reserve prior to upgrading.	55	Boundary to be rationalised including excision of Burbanks Common.	Yes	1(d) X
15	2	Totally opposes the excision of any pastoral lease for the exclusive use of any one group: (a) the management policy of the existing users including the preservation costs incurred by the pastoralist that generate savings for the Crown. (b) Viability of the pastoral lease without access to the Reserves. (c) alternative sites for State Forest that do not effect existing users.	58, 77	'Modified grazing agreement and lease requires the authors should investigate alternative sites, i.e. VCL south of Cowarna Downs. Final plan recognises that grazing and conservation are legally concurrent.	Yes Yes No	1(b) 1(e) 2(f) X

14

15

COMMENT NUMBER	NO. OF SUBS	SUMMARY OF COMMENT	SUBMISSION NUMBERS	DISCUSSION / ACTION TAKEN	PLAN AMENDED	CRITERIA
		(d) CALM has insufficient existing funds to control these areas and further costs to State and Federal Government is unwarranted			No	2(d)
		(e) the pastoralist is willing to continue managing these areas at his own expense.			No	2(b)
		(f) no justification for the Reserves to be excised except for the preservation of various sectors of the community and to the detriment of any other land user.			No	2(f)
		(g) resents any suggestion that these reserves have not been maintained as high quality rangelands.		Text amended.	Yes	1(e)
		(h) the Randall and Majestic Timber Reserves should be abolished as CALM already has control of all timber and vegetation on Crown land.			No	2(f)
16	1	There is no need for forest reserves in the Eastern Goldfields as CALM already controls all the timber.	61	Goldfields 'forests' are an ecosystem which Government policy requires us to conserve in a system of reserves.	No	2(f)
17	1	Opposed in principle to any proposals that would decrease the area available for mineral exploration.	62	Text amended to be consistent with agreed position between DOME and CALM.	Yes <input checked="" type="checkbox"/>	1(d)
18	1	Concerned with the unsubstantiated claims that appear throughout the draft, i.e: (a) have species densities or diversities been compared between various sites. (b) unsubstantiated claims have no place in Government documents. (c) the use of imprecise language may raise expectations in some sections of the community.	62	Text amended. Text amended. Text amended. Text amended	Yes <input checked="" type="checkbox"/> Yes <input checked="" type="checkbox"/> Yes <input checked="" type="checkbox"/> Yes <input checked="" type="checkbox"/>	1(e) 1(e) 1(e) 1(e)
19	1	Opposes the Recommendation and would like left at current status.	63	Text amended. Discussions with DOME have taken place to enable access under State forest tenure.	Yes <input checked="" type="checkbox"/>	1(d)
20	1	Opposes the Recommendation on the grounds that there is a substantial mining operation with current operations expected to last a further five years.	66	Text amended. Excision proposed to accommodate this submission.	Yes <input checked="" type="checkbox"/>	1(d)
21	1	Changing the tenure as proposed may have some unintended implications for the approval of mining tenements under the Mining Act. Discussion with DOME and mining industry should take place so there are no adverse effects before finalising the Management Plan. If legislative changes are required, no action take place until the required changes have been enacted, and existing tenement conditions should not be altered as a consequence of a change of tenure.	67	Text amended. Discussions with DOME have taken place to enable access under State forest tenure.	Yes <input checked="" type="checkbox"/>	1(d)

COMMENT NUMBER	NO. OF SUBS	SUMMARY OF COMMENT	SUBMISSION NUMBERS	DISCUSSION / ACTION TAKEN	PLAN AMENDED	CRITERIA	
		10.3 Nature Reserves to become Conservation Parks <i>4 submissions.</i>					
1	1	Opposes this Recommendation as all sandalwood cutters would be restricted and business would become unviable.	38	Correct only for Cave Hill where potential loss of sandalwood resource is negligible.	No	2(d)	
2	1	Supports the Recommendation for Cave Hill Nature Reserve.	63		No	2(a)	
3	1	Opposes Conservation Parks if they are equivalent to National Parks for the purpose of mining activities and to this Recommendation being implemented	67		Text amended.	Yes	1(e)
4	1	Supports the proposed changes for the two Reserves.	41		No	2(a)	
		10.4 Extension of Goongarrie National Park <i>11 submissions.</i>					
1	1	Goongarrie National Park should be downgraded and not increased in size so exploration and mining could take place, as there is no evidence that these actions would permanently or adversely affect the environment.	25	Not feasible to downgrade a National Park without a compelling case.	No	2(f)	
2	1	Map Code MNI should not have access restrictions applied to it.	26	Proposal to extend Goongarrie NP has been amended.	Yes	1(c)	
3	1	Consideration should be given to extend the boundaries around Deadman Soak area to include the alluvial flats surrounding the rock outcrop and historic site.	29	Alluvial flats around granite outcrop are in existing National Park.	No	2(d)	
4	1	Would like it acknowledged that the extension has been made possible by the donation of the land in discussion by the pastoralist.	37	Text amended	Yes	1(e)	
5	3	Concern expressed that the proposal to incorporate a portion of Menangia Station into Goongarrie National Park is being frustrated by the Mines Department and it is highly desirable CALM advocate strongly for an early resolution favourable to Recommendation 1.	40, 41, 47	Text amended An agreed position was reached with DOME for this area to be accepted as a "C" class nature reserve.	Yes	1(d)	
6	2	Goongarrie National Park could be enhanced by the provision of some basic facilities and a designated camping/picnic area. Recommendation 3 is supported.	40, 41, 47	Goongarrie National Park is proposed for development of facilities.	No	2(d)	

16

COMMENT NUMBER	NO. OF SUBS	SUMMARY OF COMMENT	SUBMISSION NUMBERS	DISCUSSION / ACTION TAKEN	PLAN AMENDED	CRITERIA
7	1	All sandalwood cutters would be restricted and their business unviable with this recommendation.	38	Comment irrelevant to Goongarrie NP.	No	2(c)
8	1	Recreational, educational and interpretation facilities should be encouraged as this is seen as a major factor in the under-utilisation of the Park.	47	Goongarrie National Park is proposed for development of facilities.	No	2(d)
9	1	Would find this recommendation acceptable if extension limited to western margin of greenstones.	63	CALM will have to accept 'C' class Nature Reserve if 'greenstone' boundary is to be excluded.	Yes	1(b)
10	1	Opposes the Recommendation to extend Goongarrie National Park.	67	As above.	Yes	1(b)
11	1	Some of the 4500 hectares of the 12000 hectares proposal is unacceptable.	68	As above.	Yes	1(b)
		10.5 Mt Manning Range Nature Reserve <i>17 submissions.</i>				
1	1	The proposed extension to the Mt Manning Range Nature Reserve will lock up another area of high prospectivity, when with our present economic climate we should be made to realise this potential.	7	This issue was discussed with DOME who have supported the extensions as a "C" class nature reserve.	No	2(d)
2	4	CALM should reconsider the proposals in the Goldfields plan and make the necessary changes to ensure that the Title and the prospective greenstone belts are open to exploration and mining.	13, 17, 22, 49	As above.	No	2(d)
3	2	Extending the CALM estate would render Mt Jackson Station unviable as the main source of drinking water is from Manda Tank during the dry season.	18, 37	As above.	No	2(d)
4	1	The flora population would be in the Mt Manning Range itself and it would be unnecessary to extend the present boundaries.	20	As above.	No	2(d)
5	3	Investment in joint ventures would be placed in jeopardy if proposals for Mt Elvire State Forest and western extension to the Mt Manning Range Nature Reserve go ahead.	13, 17, 22	As above.	No	2(d)
6	3	The Evanston Greenstone Belt is one of the most poorly explored belts in the Goldfields Region and it should not be quarantined from future mining exploration activity until it has been adequately evaluated.	13, 17, 22	As above.	No	2(d)

17

COMMENT NUMBER	NO. OF SUBS	SUMMARY OF COMMENT	SUBMISSION NUMBERS	DISCUSSION / ACTION TAKEN	PLAN AMENDED	CRITERIA
7	1	Concern expressed at the considerable amount of highly prospective areas included in the extensions to the Reserve. Difficult to comprehend why CALM would require such a large area for a few reptiles.	25	As above.	No	2(d)
8	1	Strongly opposes the changing of boundaries and status of areas in the Diemals Station pastoral lease.	34	Implementation deferred.	Yes	1(b)
9	2	All Recommendations listed are strongly supported.	41, 70	This issue was discussed with DOME who have supported the extensions as a "C" class nature reserve.	No	2(d)
10	1	Strongly opposes Recommendations 2 and 3 due to the highly prospective potential in the proposed extension. The area should remain as VCL and the protection of flora and fauna is best achieved by applying appropriate conditions of any mining leases which may be granted, should exploration programmes be successful. Additional conditions could also be applied to the existing Exploration Licence by negotiations between CALM, DOME and the mining companies.	51	This issue was discussed with DOME who have supported the extensions as a "C" class nature reserve.	No	2(d)
11	1	'Dasyurid' would not be widely understood in Recommendation 3; should add 'under Government Policy' to the end of this paragraph to clarify the reason for the 'C' class status.	52	Included in glossary.	Yes	1(e)
12	1	Strongly opposed to this recommendation pending a full review of exploration data which is currently insufficient to assess properly.	63	This issue was discussed with DOME who have supported the extensions as a "C" class nature reserve.	No	2(d)
13	1	Opposes the recommendation to extend Mt Manning Range Nature Reserve.	67	As above.	No	2(d)
14	1	Strongly objects to Recommendations to extend the Mt Manning Range Nature Reserve before a more detailed flora and fauna study is initiated and the primary objective be the identification of the causes of the restricted or endangered distribution of flora and fauna.	73	As above.	No	2(d)
		10.6 Niagara and Malcolm Dams <i>8 submissions.</i>				
1	1	Criticises the need to have Reserves created if remote distances make it a management problem.	15	Only recreation requires intensive management.	No	2(d)

81

COMMENT NUMBER	NO. OF SUBS	SUMMARY OF COMMENT	SUBMISSION NUMBERS	DISCUSSION / ACTION TAKEN	PLAN AMENDED	CRITERIA
2	1	Map Code L1 and MN4 should not have access restrictions applied to them.	26	"C" class nature reserve is not considered too restrictive.	No	2(d)
3	1	CALM should negotiate a Section 16A agreement with the parties involved.	37	Section 16A agreements only apply to privately owned land, not existing reserves.	No	2(c)
4	1	The proposed changes acknowledge the existing reality of public usage of the two Reserves and are supported.	41		No	2(a)
5	2	Strongly opposes the change of status for Malcolm and Niagara Dams.	63, 67	Accept 'C' class for northern portion.	Yes	1(b)
6	1	Concern expressed to relinquish part of CALM's reserves to local authorities as they may not have the resources to manage and maintain the reserves.	71		No	2(d)
7	1	The Reserve should remain vested in the NPNCA and enter into a joint management agreement to maintain the area.	72	Further consultation with Shire required.	No	2(e)
		10.7 Cardunia Rocks Nature Reserve 2 submissions.				
1	1	Recommendation for an increased area for the Reserve is supported and request that consideration be given to the inclusion of populations of <i>Melaleuca coccinea</i> known to occur nearby.	41	Include <i>Melaleuca coccinea</i> .	Yes	1(a)
2	1	Supports the Recommendations for Cardunia Rocks.	63		Yes	2(a)
		10.8 Jaurdi Pastoral Lease 13 submissions.				
1	1	Points out the Eastern Goldfields Railway Reserve has a different land use from the proposed State Forest Reserve and access must be maintained for vehicular and machinery for construction and maintenance of the rail transport system.	23	Exclude railway and access reserve from proposed State Forest.	Yes	1(b)
2	1	Concern expressed that Jaurdi Station covers a major shear structure known to contain gold.	25	This issue is still to be resolved.	No	2(d)
3	1	Concern expressed on Map code YL5; the Mt Dimer Gold project is affected by this reserve and current access should be retained.	26	Access to Mt Dimer will remain open.	No	2(d)

61

COMMENT NUMBER	NO. OF SUBS	SUMMARY OF COMMENT	SUBMISSION NUMBERS	DISCUSSION / ACTION TAKEN	PLAN AMENDED	CRITERIA
4	1	Opposes change of classification and would prefer the Greenstone Belt stretching from Mt Walton to Mt Finnerty should be excluded from any tenure that makes future exploration and mining access difficult.	35	This issue is still to be resolved	No	2(d)
5	1	The policy of purchasing stations to meet CALM's reserve objectives would be more effective than attempting to excise small sections of pastoral leases.	37		No	2(d)
6	3	A proposal to establish an environmental education centre would be a worthwhile development for students and interested parties.	40, 41, 47	Text amended to include proposal for field studies centre.	Yes	1(d)
7	1	Strongly opposes any changes to current status due to the potential for substantial mineral resources being locked up, due to poorly documented conservation values.	49	This issue is still to be resolved	No	2(d)
8	1	The change of status should be deferred for at least 3 years until proper assessments of flora and fauna, commercial sandalwood resources and mineral resources are completed.	65	We already know enough about the conservation values and sandalwood resources at Jaurdi to justify present management.	No	2(d)
		(a) a plan for the management and development of the Jaurdi area be prepared and decisions made in the appropriate vesting in accordance with defined land use.		An appropriate vesting has already been decided. An area management plan is planned but is not a priority at present.	No	2(d)
		(b) while these assessments are in progress the pastoral lease remain under the joint management of CALM and DOME.		CALM purchased Jaurdi so CALM has the right to manage it.	No	2(d)
		(c) continue the rehabilitation program to areas degraded by previous pastoral use; the program should permit key dams to remain open for public and exploration/mining use and internal pastoral access tracks to remain open for both CALM and exploration/mining purposes.		(i) Rehabilitation programs are under way. (ii) Dams are open to public and miners. (iii) Access tracks are open to public and miners.	No	2(d)
(d) visitor groups and public recreational use of the area to be discouraged while assessments are being undertaken. The poor public road access, intermittent supervision of visitor groups and the general public, must be addressed prior to this type of use being encouraged in the future.	Public have right of access to Jaurdi as well as miners. It is in a real sense public land managed by CALM.	No	2(d)			
9	1	Opposes all recommendations.	67	This issue is still to be resolved	No	2(d)

20

COMMENT NUMBER	NO. OF SUBS	SUMMARY OF COMMENT	SUBMISSION NUMBERS	DISCUSSION / ACTION TAKEN	PLAN AMENDED	CRITERIA
10	1	Opposes the recommendations and considers the current guidelines for exploration and mining on VCL are sufficient to protect the areas involved.	73	As above.	No	2(d)
11	1	Strongly opposes change of status due to new information regarding high prospectivity.	68	As above.	No	2(d)
		10.9 Mt Elvire Pastoral Lease <i>9 submissions.</i>				
1	3	This proposal has the potential to hinder planning and the implementation of exploration and mining activities and increase costs by the proposed State Forest western boundary will divide the title into two areas.	13, 17, 22	This issue is still to be resolved	No	2(d)
2	3	Strongly urges CALM to reconsider the proposals in the Mt Elvire area, to make the necessary adjustments to ensure that the Title and prospective Evanstone greenstone belts are open to exploration and mining.	13, 17, 22	This issue is still to be resolved.	No	2(d)
3	1	Concern expressed that the extending of boundaries would include considerable amounts of highly prospective areas for base metals and gold.	25	As above.	No	2(d)
4	1	Concern expressed over this exploration licence, as it is strategically located across a relatively unexplored northerly trending greenstone/BIF belt, if converted to a State forest exploration would be seriously curtailed.	33	As above.	No	2(d)
5	1	The policy of purchasing stations to meet CALM's reserve objectives would be more effective, than attempting to excise small sections of pastoral leases.	37		No	2(a)
6	1	Opposes all Recommendations for Mt Elvire.	67	As above.	No	2(a)
7	1	Supports all Recommendations.	70	As above.	No	2(a)
8	1	Strongly opposes change of status due to new information becoming available on high prospectivity of area.	68	As above.	No	2(a)

21

COMMENT NUMBER	NO. OF SUBS	SUMMARY OF COMMENT	SUBMISSION NUMBERS	DISCUSSION / ACTION TAKEN	PLAN AMENDED	CRITERIA
		10.10 Miscellaneous Recommendations CALM review of "B" and "C" Class Reserves <i>7 submissions.</i>				
1	1	Strongly opposes this proposal due to the Cave Rock mining operation and the high geological prospectivity of the area. Map code CG8. A tenure change to State Forest should be considered which would allow CALM to maintain similar access conditions.	26	Proceed according to DOME recommendation.	Yes	1(b)
2	1	Map Code CG9 and CG10, CG13 should not have access restrictions applied to them due to lack of information of the area.	26	Proceed according to DOME recommendation.	Yes	1(b)
3	1	CALM should enter into Section 16A agreements with the affected landholders and negotiate terms acceptable to both parties.	37	Section 16A agreements do not apply to reserves.	No	2(c)
4	1	The Lake Douglas Recreational Reserve should be upgraded to Nature Reserve status due to the rare fauna and flora found there.	31	Discussed with Alan Graham for alternative management options to be investigated.	No	2(f)
5	1	Endorsement of the proposed changes to the status of the Nature Reserves listed is not unanimous, as the justification for upgrading certain Reserves has not been clearly established.	41		No	2(d)
6	1	Accepts the recommendation for Rowles Lagoon, and Clear and Muddy Lakes although expresses concern over the moves to legitimise power boating and water skiing in the area when it is clearly detrimental to the waterbirds that breed there in good seasons.	41		No	2(c)
7	1	Opposes the recommendation to upgrade to "A" Class status for: (a) Clear and Muddy Lakes. (b) Kurrawang. Retain current status until at least exploration completed (c) Dordie Rock. Resource potential should be reviewed before reclassification. (d) Kambalda. Due to ongoing exploration. (e) Binaronca Rock. Due to pending exploration results. Accepts the recommendation to upgrade: (f) Rowles Lagoon (g) Burra Rock	63	Proceed according to DOME recommendation.	Yes Yes Yes Yes Yes Yes Yes No	1(b) 1(b) 1(b) 1(b) 1(b) 1(b) 1(b) 1(b)

22

COMMENT NUMBER	NO. OF SUBS	SUMMARY OF COMMENT	SUBMISSION NUMBERS	DISCUSSION / ACTION TAKEN	PLAN AMENDED	CRITERIA
8	1	Opposes the Recommendations for: (a) Kambalda (b) Kurrawang (c) Clear and Muddy Lakes (d) Cave Rocks (e) Binaronca Rock	67	Proceed according to DOME recommendation.	Yes Yes Yes Yes Yes Yes	1(b) 1(b) 1(b) 1(b) 1(b) 1(b)
9	1	In the light of the good working relationship that has been established between the two departments, CALM and DOME concerning exploration access on "C" Class reserves, all the "C" Class Nature Reserves and 5g Reserve proposals are acceptable to the Department of Minerals and Energy. 10.11 Victoria Rock Nature Reserve <i>4 submissions.</i>	68	Proceed according to DOME recommendation.	Yes	1(b)
1	1	In Section 10.11 the reader is told to see Recommendation 11.9 for Justification and Recommendations but 11.9, on page 53, refers to Homestead Cave.	2	Our mistake.	Yes	1(e)
2	1	CALM should enter into Section 16A agreements with the affected landholders and negotiate terms acceptable to both parties.	37	Section 16A agreements do not apply to reserves.	No	2(c)
3	1	Supports the move to include this Nature Reserve in the proposed Goldfields Woodlands National Park and suggests it should warrant a higher ranking on the priorities list, with an extensive biological survey on the area culminating with it being published on completion.	41		Yes	1(a)
4	1	In the last sentence - I believe this should read "See Recommendation 11.8" no need for final words. 10.12 Great Victoria Desert Nature Reserve <i>7 submissions.</i>	52	Our mistake.	Yes	1(e)
1	1	Strongly opposes conversion to "A" Class Nature Reserve.	25	Submission is in error. Reserve is currently "A" class.	Yes	1(b)
2	1	Area map code KBD15 should not have access restrictions applied to them due to the lack of information on prospectivity.	26	Final recommendation is to accommodate Aboriginal land access, tenure and involvement in management. Access for mining will be no different than existing situation.	Yes	1(b)

23

COMMENT NUMBER	NO. OF SUBS	SUMMARY OF COMMENT	SUBMISSION NUMBERS	DISCUSSION / ACTION TAKEN	PLAN AMENDED	CRITERIA
3	1	Agrees with the Recommendation to change from Nature Reserve to "A" Class National Park.	29	As above.	Yes	1(b)
4	1	The needs and aspirations of the Aboriginal inhabitants of the GVDNR area have our respect and support, there are some reservations as to whether a National Park status is appropriate for the land usage as discussed in the plan.	41	As above.	Yes	1(b)
5	1	Opposes the Recommendation to "A" Class, should retain existing status until resource potential is better known.	63	As above.	Yes	1(b)
6	1	Opposes the Recommendation.	67	As above.	Yes	1(b)
7	1	Suggests change to Class A Conservation Park.	68	As above.	Yes	1(b)
10.13 Proposed Excision - Gibson Desert Nature Reserve						
<i>2 submissions.</i>						
1	1	Gibson Desert Nature Reserve should have the same proposed action as Great Victoria Desert Nature Reserve; in both cases Aboriginal people are living on Nature Reserves with strong ties to the land CALM should keep a consistent response which is still sensitive to individual situations.	29		Yes	1(d)
2	1	The name "Karilywara" is generally used as the community's name, the orthography should be consistent throughout.	29		Yes	1(e)
3	1	Strongly endorses this recommendation.	54		Yes	1(b)
4	1	CALM should excise a portion of land from the existing Nature Reserve to accommodate community living requirements at Karilywarra; this would amount to 16480 hectares or less than 1% of the existing Gibson Desert Nature Reserve.	54		Yes	1(b)
11.0 PROPOSED ADDITIONS TO PUBLIC LANDS MANAGED BY CALM						
<i>6 submissions.</i>						
1	1	Endorses all Recommendations without qualification.	40		No	2(a)

24

COMMENT NUMBER	NO. OF SUBS	SUMMARY OF COMMENT	SUBMISSION NUMBERS	DISCUSSION / ACTION TAKEN	PLAN AMENDED	CRITERIA
2	1	This Section should be titled "Proposed New Public Lands for Management by CALM" or something similar.	52		Yes	1(e)
3	1	Resources for the management of mining in the Goldfields should be rationalised and/or increased accordingly, i.e. staffing, boundary rationalisation and funding.	55	Staffing will be consistent with CALM's Goldfields strategic plan.	Yes	1(d)
4	1	Opposes the Recommendations, until 10 years after the Bureau of Mineral Resources Geophysical Maps have been made available to the public. These surveys can pinpoint ore bodies covered with soil or calcrete and will enable much more informed decisions to be made before tying up large areas of land.	61		No	2(f)
5	1	CALM would probably require a cash bond and many small prospectors couldn't afford to pay.	61		No	2(d)
6	1	Would withdraw opposition to the creation of new conservation areas in the Region if the Government would administer such land under the provisions of the two relevant Statutes, the Mining Act and the Conservation and Land Management Act rather than under a politically self-serving policy.	64	Government policy is beyond the scope of the GRDMP.	No	2(c)
7	1	Rejects National Park, Conservation Park and "A" Class Reserve proposals due to the prospectivity of the relevant areas but would be acceptable as "C" Class Reserves.	68	Plan amended to be consistent with DOME submission.	Yes	1(b)
		11.1 Carnarvon Range <i>9 submissions.</i>				
1	1	Any change in the current status of the land should not preclude continued access for mineral exploration, and subject to appropriate environmental standards.	11	Text amended to be consistent with DOME responses.	Yes	1(b)
2	1	Map code WU2 should not have access restrictions applied to them due to lack of information of the area.	26	Text amended to be consistent with DOME responses.	Yes	1(b)
3	1	Any change in the current status of the land should not preclude access for mineral exploration. Mining should be allowed, subject to appropriate environmental standards.	11	Text amended to be consistent with DOME responses.	Yes	1(b)

25

COMMENT NUMBER	NO. OF SUBS	SUMMARY OF COMMENT	SUBMISSION NUMBERS	DISCUSSION / ACTION TAKEN	PLAN AMENDED	CRITERIA
4	1	Supports the proposal for the creation of the Camarvon Range National Park.	41	"C" class conservation park proposed.	Yes	1(b)
5	1	In the last paragraph - Where and by whom was the waterhole incorrectly mapped?	52	Text amended to clarify.	Yes	1(e)
6	1	The Camarvon Range National Park should remain open to 4WD members.	59	Existing access will remain.	No	2(d)
7	1	Strongly opposes this recommendation at least until current exploration determines full resource potential, and if mining development is warranted.	63	Text amended to be consistent with DOME responses.	Yes	1(b)
8	1	Opposes this recommendation.	67	Text amended to be consistent with DOME responses.	Yes	1(b)
9	1	Suggests status should be "C" Class Nature Reserve.	68	Text amended to be consistent with DOME responses.	Yes	1(b)
10	1	Opposes this recommendation. No mention is made of the joint management of the National Park, and if the change of status goes ahead it should be under aboriginal control or developed as an aboriginal reserve.	76	Text amended to include management input from WDLC.	Yes	1(b)
11.2 Lake Throssel <i>4 submissions.</i>						
1	1	This recommendation need to be clarified as is gives the impression change of status may not go ahead.	52	Text amended to clarify this point.	Yes	1(e)
2	1	Suggests discussion with the Aboriginal community before establishing the conservation values and appropriate boundaries of the Nature Reserve, so aboriginal land interests can be accommodated.	54	Text amended to include Aboriginal involvement.	Yes	1(b)
3	1	Resource potential is generally low for this area, but it should be reviewed again if it becomes a firm proposal.	63	Look at appropriate boundary and accept "C" class conservation park.	Yes	1(b)
4	1	Opposes the Recommendation and suggests status be "C" class reserve.	68	Look at appropriate boundary and accept "C" class conservation park.	Yes	1(b)
11.3 Lake Disappointment <i>No submissions.</i>						
11.4 Windich Spring <i>1 submission.</i>						
1	1	Supports this Recommendation.	63		No	2(a)

26

COMMENT NUMBER	NO. OF SUBS	SUMMARY OF COMMENT	SUBMISSION NUMBERS	DISCUSSION / ACTION TAKEN	PLAN AMENDED	CRITERIA
		11.5 Reserve No. 16153 <i>11 submissions.</i>				
1	1	Supports this Recommendation on the assumption CALM would not withhold access for exploration and mining.	8	Proposal modified to miscellaneous reserve.	Yes	1(b)
2	1	Concern expressed at the recommendation to convert Comet Vale into a "A" class reserve due to the amount of gold produced from this area.	25	As above.	Yes	1(b)
3	1	Map Code MN3 should not have access restrictions applied to them due to lack of information regarding high or unknown prospectivity.	26	As above.	Yes	1(b)
4	1	Gravel reserves should be set aside for Main Roads exclusive use for emergency works and long term major construction works.	28	Proposal modified to miscellaneous reserve.	Yes	1(b)
5	1	In addition to the fauna listed there is an extant population of Mallee Fowl present; there has been a sighting of the threatened Woma Python in this area.	29	Proposal modified to miscellaneous reserve.	Yes	1(b)
6	1	The Goongarrie pastoral station is almost entirely dependent for its permanent water supply on bores in Reserve 16153, and CALM should enter into a Section 16a agreement with the pastoralist to ensure the pastoral enterprise is not adversely affected by the proposed changes.	37	As above.	Yes	1(b)
7	1	Strongly opposes this recommendation as it would be premature to lock up this area on the poorly documented conservation values presented in this report.	49	As above.	Yes	1(b)
8	1	In the last paragraph, the words "and added to the Nature Reserve" should be added after "cancelled"	52	As above.	Yes	1(b)
9	1	Strongly opposes this recommendation, leave as a "C" class reserve and vest in NPNCA.	63	As above.	Yes	1(b)
10	2	Opposes this recommendation.	67, 68	As above.	Yes	1(b)
		11.6 Adelong Dunes <i>1 submission.</i>				
1	1	Supports this recommendation.	63		No	2(a)

27

COMMENT NUMBER	NO. OF SUBS	SUMMARY OF COMMENT	SUBMISSION NUMBERS	DISCUSSION / ACTION TAKEN	PLAN AMENDED	CRITERIA
		11.7 Reserve No. 27585 at Wallaroo Rock <i>4 submissions.</i>				
1	1	Public access would need to be resolved prior to change of status of this area.	23	Proceed with gazettal as Conservation Park, but do not develop any further until alternative access has been provided.	Yes	2(b)
2	1	A Section 16a agreement should be worked out with the parties involved.	37	Section 16a irrelevant.	No	2(f)
3	1	One of the stated Reserve numbers appears to be incorrect.	52	Text amended.	Yes	1(e)
4	1	Supports the recommendation.	63		No	2(a)
		11.8 Goldfields Woodlands National Park <i>15 submissions.</i>				
1	1	Concern expressed over this proposal and how it would affect the future mining and exploration operations of mining leases.	21	Final proposal is approved by DOME but subject to formal resource assessment. Greenstone areas are excluded from National Park.	Yes	1(b)
2	1	Strongly opposes the creation of this National Park as change of status would exclude prospecting and mining.	25	As above.	Yes	1(b)
3	2	Map code CG1 should not have access restrictions applied, due to the lack of information regarding prospectivity in the area.	26, 49	As above.	Yes	1(b)
4	1	Gravel reserves should be set aside for Main Roads exclusive use for emergency works and long term major construction works.	28	Exclude gravel reserves from proposed National Park.	Yes	1(b)
5	1	Change of status to National Park could be detrimental, as it would attract numerous sightseers and their vehicles.	21	This is one function of a National Park.	No	2(f)
6	2	Strongly supports the proposed change of status to National Park, as it is easily accessible and close to facilities at Coolgardie and Kalgoorlie.	41, 47		No	2(a)
7	1	In the last line: (1) a cross reference should be made to Section 10.11 here (2) Agamid....should have an explanation provided.	52	Text amended. Included in glossary.	Yes Yes	1(e) 1(e)

88

COMMENT NUMBER	NO. OF SUBS	SUMMARY OF COMMENT	SUBMISSION NUMBERS	DISCUSSION / ACTION TAKEN	PLAN AMENDED	CRITERIA
		(3) in the last paragraph ... the last sentence of this paragraph provides valuable information which should have appeared earlier in the chapter. Suggests the word "procedures" be changed to "proposals" and the whole sentence be moved to the front of both Sections 10 and 11.		Text amended.	Yes	1(e)
8	1	The proposed GWNP area should be examined for the presence of greenstones and any such areas be excised with the area surrounding in interpreted nnw-sse fault zone. Additional areas on the Southern and Western boundaries of the proposed zone could be added to the area to make up for this excision.	53	Final proposal is approved by DOME but subject to formal resource assessment. Greenstone areas are excluded from National Park.	Yes	1(b)
9	1	If further examination reveals the conservation values are considered worthy of inclusion in a reserve then it should be given a classification that allows exploration to occur.	62	Final proposal is approved by DOME but subject to formal resource assessment. Greenstone areas are excluded from National Park.	Yes	1(b)
10	1	This recommendation may be acceptable if greenstones excised. Requires resource assessment.	63	Final proposal is approved by DOME but subject to formal resource assessment. Greenstone areas are excluded from National Park.	Yes	1(b)
11	1	A service corridor should be excised from the proposed Boorabin National Park from the Jaurdi area.	65	Allow for service corridor prior to gazettal.	Yes	1(b)
12	1	Opposes this recommendation.	67	Final proposal is approved by DOME but subject to formal resource assessment. Greenstone areas are excluded from National Park.	Yes	1(b)
13	1	Some 40,000 ha of the 283,000 ha proposal is unacceptable. Consider "C" class.	68	As above.	Yes	1(b)
14	1	The Water Authority agrees with the aims of the DMP but is concerned with the long term effects for the Authority: (a) a service corridor for construction and maintenance of the pipeline at Boorabin National Park; (b) Reserve 31897 is a sand site area vested with the Minister or Works and should remain so; (c) the Reserves set aside for pump stations are to remain and be "incorporated" with the area required for the pipeline;	69	Ensure these points can be accommodated prior to gazettal. As above. As above. As above.	Yes Yes Yes Yes	1(b) 1(b) 1(b) 1(b)

29

COMMENT NUMBER	NO. OF SUBS	SUMMARY OF COMMENT	SUBMISSION NUMBERS	DISCUSSION / ACTION TAKEN	PLAN AMENDED	CRITERIA
		(d) access remain open to Boorabin Rock 2917, Boondi Rock 6078 and Woolgangie 2918 dams for maintenance use and so no unnecessary demand is placed on the pipeline;		As above.	Yes	1(b)
		(e) individual reserves would need to be checked before any changes are made in regard to any current lease agreements;		As above.	Yes	1(b)
		(f) a service corridor, similar to Boorabin National Park, for the water main , located close to the highway on the north-eastern boundary.		As above.	Yes	1(b)
		11.9 Homestead Cave 2 submissions.				
1	1	This recommendation should be presented as a joint recommendation with SCRP (as for Section 11.10) and the proposal should be clearly identified as referring to a Miscellaneous Reserve in paragraph 1. In addition 5g reserve in paragraph 2 should be changed to "Miscellaneous Reserve".	52	Text amended.	Yes	1(e)
2	1	Supports this Recommendation.	63		No	2(a)
		11.10 Woodline Hills 8 submissions.				
1	1	Map code KBD3 should not have access restrictions applied due to the lack of information regarding prospectivity in the area.	26	Final recommendation is approved by DOME.	Yes	1(b)
2	1	Strongly opposes the boundaries of the proposed Nature Reserve and believes the area is excessive for the purpose stated, and if this Reserve is to be established the requirements should be:	36		No	2(a)
		(a) to withdraw the boundaries to the Madoonia Downs pastoral lease boundaries at least;		Agreed	No	2(d)
		(b) continued access to carry out wild dog and fox control;		All these concerns can be accommodated.	No	2(d)
		(c) permission to lay baits to maintain buffer zone control of wild dogs;		As above.	No	2(d)
		(d) access to develop underground water supplies already proved at Woodline Hills and Yardina Rock for use on Madoonia Downs;		As above.	No	2(d)
		(e) courtesy of being notified of intending use of private road system;		As above.	No	2(d)
		(f) Madoonia downs to be given the opportunity to quote for any fencing to be carried out on the Reserve.		As above.	No	2(d)

30

31

COMMENT NUMBER	NO. OF SUBS	SUMMARY OF COMMENT	SUBMISSION NUMBERS	DISCUSSION / ACTION TAKEN	PLAN AMENDED	CRITERIA
3	1	The boundaries of this reserve as detailed on the DMP overlap Madoonia Station boundaries. They should be surveyed before continuing. Comments made in Section 10.2 apply equally strongly to this proposal.	37	The authors disagree.	No	2(d)
4	1	The recommendation concerning Woodline Hills may fall more appropriately into the sphere of interest of the South Coast CALM region and better administered by the Esperance office.	41	The Goldfields Region is more experienced in arid zone pastoral management issues.	No	2(f)
5	1	There are inconsistencies in this proposal compared with the equivalent in the SCRMP. The SCRMP Map 9a does not agree on the location of the proposal and the area of 78,189.6 is different to the GRDMP, it is necessary to explain why the difference exists.	52	The authors disagree.	Yes	1(e)
6	1	Opposes the recommendation as area requires resource evaluation. Given the size proposed, "C" class is acceptable but not "A" class.	63	Text amended to be consistent with DOME recommendation, i.e "C" class.	Yes	1(b)
7	1	Opposes this recommendation.	67	Text amended to be consistent with DOME recommendation, i.e "C" class.	Yes	1(b)
8	1	Opposes the recommendation and suggests a "C" class reserve should be considered.	68	Text amended to be consistent with DOME recommendation, i.e "C" class.	Yes	1(b)
		11.11 Buningonia Spring <i>14 submissions.</i>				
1	2	The lessee of the Fraser Range pastoral lease purchased the pastoral lease planning to develop and utilise the areas of suitable pastoral value.	5, 27	Text amended to exclude portion of Fraser Range.	Yes	1(b)
2	2	The existing Buningonia Well is capable of providing a source of stock water to the surrounding area and further south-west into extensive areas of suitable undeveloped country.	5, 9	As above.	Yes	1(b)
3	2	The area of proposed excision is capable of supporting livestock grazing. The area supports palatable perennial shrubs and prolific annual pasture species in good seasons.	5, 9	As above.	Yes	1(b)

COMMENT NUMBER	NO. OF SUBS	SUMMARY OF COMMENT	SUBMISSION NUMBERS	DISCUSSION / ACTION TAKEN	PLAN AMENDED	CRITERIA
4	5	The viability of Fraser Range Station at the present state of development is considered to be marginal. The utilisation of the presently undeveloped areas of the lease (that will support livestock) is essential to the future viability of the whole lease.	5, 9, 27, 37, 60	As above.	Yes	1(b)
5	4	At the time of purchase, the lessee saw the potential to fully develop the lease. The loss of this area to CALM would jeopardise this potential and the lessee's livelihood.	5, 9, 27, 60	As above.	Yes	1(b)
6	3	CALM's justification statement is considered insufficient to warrant the excision of 15,678 ha from the Fraser Range pastoral lease as pastoral development could be to the advantage of nomadic south-west birds with the provision of permanent water access.	5, 9, 60	Text amended to exclude portion of Fraser Range.	Yes	1(b)
7	1	Endorse and support the lessees of Fraser Range stations submission and find unacceptable the loss of rates for the ratepayers in the area, and would expect ex-gratia payment from CALM if the proposal goes ahead.	12	As above.	Yes	1(b)
9	1	Concern expressed that a reduction of lease size would bring more pressure on other parts of lease and of the lack of discussion held on this proposal with the lessees.	24	As above.	Yes	1(b)
10	1	Map code KBD4 should not have access restrictions due to the lack of information regarding prospectivity in the area	26	As above.	Yes	1(b)
11	1	Objects to CALM acquiring the portion of lease known as Buningonia Spring due to future developments, and the proven supply of water at Buningonia Well.	27	As above.	Yes	1(b)
12	1	Opposes the proposed boundary of the "A" Class reserve will make another 15,000 ha of Fraser Range lease unusable leading to overgrazing and there is no known water supply to feed the northern limits of the station if Buningonia is removed.	29	As above.	Yes	1(b)
13	1	Pointed out two abnormalities: (a) Buningonia Spring is a dam, not a Spring (b) Buningonia Well is not at the "spring" but approximately 3 kilometres to the north east of the dam.	29	Noted.	No	1(e)

32

COMMENT NUMBER	NO. OF SUBS	SUMMARY OF COMMENT	SUBMISSION NUMBERS	DISCUSSION / ACTION TAKEN	PLAN AMENDED	CRITERIA
14	1	As an existing water point is located within the proposed reserve and as it would be expensive to relocate and re-establish, an excellent prospect of water exists in the south-west corner of the area, and would be unavailable for pastoral use if the area is excised. A general observation made in Section 10.2, Comment 6 would apply equally strongly to this proposal.	37	Text amended to exclude portion of Fraser Range.	Yes	1(b)
15	1	To classify this land as an "A" Class reserve will not bring an income to the State or Federal Government it will only cost them money, and it will deny future income and export for this country.	27	As above.	Yes	1(b)
16	1	The recommendation concerning Buningonia Spring may fall more appropriately into the sphere of interest of the South Coast CALM and better administered from the Esperance office.	41	The Goldfields Region is more experienced in arid zone pastoral management issues.	No	2(d)
17	1	No negotiations were held with the lessee of Fraser Range prior to release of this document. (a) "Granulite land form" will need to be explained.	52	In hindsight this issue could have been handled in a more sensitive manner.	No	2(d)
18	2	Opposes recommendation unless restricted to "C" Class.	63, 68	Recommendation amended to "C" class, in line with DOME submission.	Yes	1(b)
19	1	Opposes this recommendation.	67	As above.	Yes	1(b)
11.12 Nullarbor Reserves						
<i>6 submissions.</i>						
1	1	Expressed concern over the size of this reserve, which will prohibit exploration and mining unless approval is given in both Houses of Parliament, as area is excessive.	25	Final recommendation is consistent with DOME submission.	Yes	1(b)
2	1	The proposed National Park boundaries would impinge on existing lease and future land requirements. Request that an area surrounding this operation be excluded from the proposed National Park.	30	Exclude area required by Loongana Lime Pty Ltd from proposed "C" Class reserve.	Yes	1(b)
3	1	Due to the remoteness of the reserves from Kalgoorlie, posing problems of administration and the complexities of the liaison needed, would be better administered from the Esperance CALM office.	41	Joint management with SCR is proposed, text amended to make this clear.	Yes	1(b)

33

34

COMMENT NUMBER	NO. OF SUBS	SUMMARY OF COMMENT	SUBMISSION NUMBERS	DISCUSSION / ACTION TAKEN	PLAN AMENDED	CRITERIA
4	1	Opposes the proposal as the area has potential for substantial mineral resources and it would be premature to lock up these areas based on the poorly documented conservation values presented in this document.	49	Text amended to be consistent with DOME recommendation. but consideration should be given to having eventual tenure of GVDNR and the eastern Nullarbor Reserve the same, i.e Conservation Park.	Yes	1(e)
5	11	Both Nullarbor East and Nullarbor West have not been evaluated and should retain current status until the resource potential has been evaluated.	63	Text amended to be consistent with DOME recommendation, but consideration should be given to having eventual tenure of GVDNR and the eastern Nullarbor Reserve the same, i.e conservation park.	Yes	1(e)
6	1	Due to paucity of information available for this region in respect to conservation and economic resources, it is not appropriate to adopt such a high classification; alternative proposals should be considered to provide the necessary protection for conservation values while encouraging assessment of other resource values. It is considered that the South Australian Regional Reserves model would be a suitable option in this case.	67	Text amended to be consistent with DOME recommendation , but consideration should be given to having eventual tenure of GVDNR and the eastern Nullarbor Reserve the same, i.e Conservation park.	Yes	1(e)
7	1	Opposes this recommendation.	67	Text amended to be consistent with DOME recommendation, but consideration should be given to having eventual tenure of GVDNR and the eastern Nullarbor Reserve the same, i.e Conservation park.	Yes	1(e)
		Proposed Reserves and Extensions (p.56) <i>1 submission.</i>				
1	1	Add "from Sections 10 and 11" here. Also the last figure in the column could use an explanation such as "Total, proposed additions/extensions".	52	Text amended.	Yes	1(e)
		12.0 SITES WITH HIGH CONSERVATION VALUES NOT INTENDED FOR RESERVATION <i>2 submissions.</i>				
1	1	Listing specific sites of interest in this way, seems to be a useful means of registering CALM's interest from a conservation viewpoint. Supports this recommendation.	41		No	2(a)
2	1	In line 3 the word 'acquire' is a bit provocative perhaps 'reserve' would be better.	52	Text amended.	Yes	1(e)
		12.1 Site EM22 Jeedamya Station <i>No submissions.</i>				

COMMENT NUMBER	NO. OF SUBS	SUMMARY OF COMMENT	SUBMISSION NUMBERS	DISCUSSION / ACTION TAKEN	PLAN AMENDED	CRITERIA
1	1	12.2 Erayinia Hill, Cowarna Downs Station 3 submissions. The use of "ca", "P5" and "P3" is confusing these should be replaced by the full wording.	52	Text amended.	Yes	1(e)
2	2	The species this reserve is proposed to protect, <i>Eucalyptus kruseana</i> , is not grazed by stock and is more threatened by fire, the threat of which is reduced where stock are managed to remove excessive annual grasses.	37, 77		Yes	1(b)
		12.3 Gum Creek, River Red Gum Site No submissions.				
		12.4 Serpentine Lakes 1 submission. In line 2 "Paleochannel" needs defining.	52	Included in glossary.	Yes	1(e)
		12.5 Ranges of Western Desert 4 submissions. Very little has been done to document a systematic biological survey for the region despite Cabinet endorsing a recommendation in 1976 with EPA and AAPA. (a) there are numerous plants restricted to the ranges, and remnant, but declining populations of the Black-footed Rock Wallaby, populations of the restricted dragon (<i>Ctenophorus rufescens</i>) and the Dusky Grass-wren. (b) the Ngaanyatjarra Council and CALM need to determine areas important for nature conservation and ensure that the nature conservation values are not compromised by the infrastructure such as roads or outstations or by the activities of an increasing number of tourists.	29	See Section 4.6.	No	2(b)
					Yes	1(a)
					No	2(b)
2	1	In line 4, "AAPA" should be written out in full.	52	Text amended.	Yes	1(e)
3	1	In general terms the Ngaanyatjarra Council would sympathetically entertain CALM land management proposals for these ranges, and it is likely that the council will call upon CALM's expertise in relation to land management issues raised by the number and density of tenement applications.	54	Text amended.	Yes	1(b)
4	1	CALM should have a liaison and consultative role in the environmental management of mining in the Ranges of the Western Desert.	55	Text amended.	Yes	1(d)

35

COMMENT NUMBER	NO. OF SUBS	SUMMARY OF COMMENT	SUBMISSION NUMBERS	DISCUSSION / ACTION TAKEN	PLAN AMENDED	CRITERIA
		13.0 CONSERVATION				
		13.1 Flora Conservation				
		<i>7 submissions.</i>				
1	1	Check with the Director of Nature Conservation before writing revised plan to organise an update for this section due to changes to the Wildlife Conservation Act, at present in Parliament's Legislative program	3	Final plan up-date to be consistent with recent changes.	Yes	1(c)
2	3	(a) Experience has shown that many people are not aware of regulations concerning the taking of flora. Some are aware and disregard the law. Education is needed perhaps with signage on roadsides and prominent places in the Goldfields. (b) Suggests in Strategy 2, Page 62 that photographs and specimens of threatened and priority listed species be available for viewing at an accessible venue, i.e Goldfields Reference Herbarium at Kalgoorlie College.	40, 41, 47	Outside scope of regional management plan. See Strategy No 2, page 58.	No No	2(c) 2(d)
3	1	There hasn't been anyone fined for being in breach of the Conservation Act.	46	Society considers that some costs have to be met to achieve overall benefits.	No	2(c)
4	1	There is no strategy covering protection of flora.	52	Text amended to include protection strategies, e.g fencing, firebreaks and burning if appropriate	Yes	1(d)
5	1	The notification to land users of the presence of rare flora should become pro-active through inter-departmental GIS databases as a matter of priority.	55		No	2(d)
		13.2 Sandalwood Conservation and Management				
		<i>3 submissions.</i>				
1	1	(a) Endorse the proposals for the study and conservation of naturally occurring sandalwood trees; and (b) as detailed above in Section 1(a) we are not convinced that emphasis on sandalwood plantations is justified by the likelihood that these will prove commercially viable.	41		No No	2(a) 2(d)
2	1	(a) in Strategy 6; this is the first mention of alloenzyme variation. It certainly needs explanation in the background material. (b) in Strategy 10, add "significantly" before "disadvantaging" otherwise people will have unrealistic expectations and provide them with a focus for complaints.	52	Included in glossary. Sandalwood Section has been substantially amended and referred to Sandalwood Management Plan.	Yes Yes	1(e) 1(e)

36

36

COMMENT NUMBER	NO. OF SUBS	SUMMARY OF COMMENT	SUBMISSION NUMBERS	DISCUSSION / ACTION TAKEN	PLAN AMENDED	CRITERIA
		13.0 CONSERVATION 13.1 Flora Conservation <i>7 submissions.</i>				
1	1	Check with the Director of Nature Conservation before writing revised plan to organise an update for this section due to changes to the Wildlife Conservation Act, at present in Parliament's Legislative program	3	Final plan up-date to be consistent with recent changes.	Yes	1(c)
2	3	(a) Experience has shown that many people are not aware of regulations concerning the taking of flora. Some are aware and disregard the law. Education is needed perhaps with signage on roadsides and prominent places in the Goldfields. (b) Suggests in Strategy 2, Page 62 that photographs and specimens of threatened and priority listed species be available for viewing at an accessible venue, i.e Goldfields Reference Herbarium at Kalgoorlie College.	40, 41, 47	Outside scope of regional management plan. See Strategy No 2, page 58.	No No	2(c) 2(d)
3	1	There hasn't been anyone fined for being in breach of the Conservation Act.	46	Society considers that some costs have to be met to achieve overall benefits.	No	2(c)
4	1	There is no strategy covering protection of flora.	52	Text amended to include protection strategies, e.g fencing, firebreaks and burning if appropriate	Yes	1(d)
5	1	The notification to land users of the presence of rare flora should become pro-active through inter-departmental GIS databases as a matter of priority.	55		No	2(d)
		13.2 Sandalwood Conservation and Management <i>3 submissions.</i>				
1	1	(a) Endorse the proposals for the study and conservation of naturally occurring sandalwood trees; and (b) as detailed above in Section 1(a) we are not convinced that emphasis on sandalwood plantations is justified by the likelihood that these will prove commercially viable.	41		No No	2(a) 2(d)
2	1	(a) in Strategy 6; this is the first mention of alloenzyme variation. It certainly needs explanation in the background material. (b) in Strategy 10, add "significantly" before "disadvantaging" otherwise people will have unrealistic expectations and provide them with a focus for complaints.	52	Included in glossary. Sandalwood Section has been substantially amended and referred to Sandalwood Management Plan.	Yes Yes	1(e) 1(e)

COMMENT NUMBER	NO. OF SUBS	SUMMARY OF COMMENT	SUBMISSION NUMBERS	DISCUSSION / ACTION TAKEN	PLAN AMENDED	CRITERIA
		(c) Marketing: there is no strategy aimed at achieving the part of the objective which reads "with the maximum level of local processing" One is needed. In addition Strategy 14 doesn't seem to fit the objective. Perhaps it should be moved elsewhere (e.g Management). (d) Plantations: an objective is required. (e) Strategy 17: This seems to be two strategies in one. (f) Strategy 18: is this achievable for the full 10 years life of the plan? (g) in Strategy 26 - is domestic stock a problem? If so it should be mentioned too.		As above.	Yes	1(e)
3	1	Agrees with the DMP. The potential for local Aboriginal organisations to contract for sandalwood pulling is noted.	75	As above.	No	2(a)
		13.3 Fauna Conservation <i>5 submissions.</i>				
1	1	Contact Director of Nature Conservation before writing revised plan to organise an update for this Section due to changes to the Wildlife Conservation Act at present in Parliaments legislative program.	3	Final plan up-date to be consistent with recent changes.	Yes	1(a) (e)
2	1	Add to the list of Strategies: (4) Where possible, undertake management to main maintain or enhance populations of endangered species (e.g. feral animal control, habitat alteration through the use of fire).	29	Text amended, see Strategy 4.	Yes	1(d)
3	1	There is no strategy actually saying what you will do to conserve fauna.	52	Text amended, see Strategy 4.	Yes	1(d)
4	1	Ngaanyatjarra Council members would welcome a larger role in the planning and implementing of any biological research, to ensure that no cross cultural mistakes are made, i.e: (a) entry into prohibited sites of great cultural significance (b) inappropriate treatment of animals according to Aboriginal tradition - skinning of kangaroos, tagging of some bird species etc.	54	Aboriginal communities are routinely consulted prior to research in areas where they have an interest.	No	2(d)
5	1	Generally agreed Hunting remains special and an essential part of Aboriginal culture for many in the region. Participation in local management plans is one way in which areas in which local agreement on the management of endangered species can be achieved.	75	Aboriginal hunting is addressed in Section 16.2.	No	2(a, d)

COMMENT NUMBER	NO. OF SUBS	SUMMARY OF COMMENT	SUBMISSION NUMBERS	DISCUSSION / ACTION TAKEN	PLAN AMENDED	CRITERIA
1	1	<p>13.4 Cultural Areas <i>2 submissions.</i></p> <p>Welcomes the recognition by CALM of the importance of Aboriginal sites and that in some instances measures may need to be taken for their protection. The aboriginal people wish to assert primacy of the traditional owners in relation to heritage issues, and it has been the policy not to disclose to outside agencies including the Department of Aboriginal Sites any information regarding sites of significance.</p> <p>Suggests the following re-wording of parts of the Strategies section:</p> <p>(a) Strategy 1 - subject to requests from appropriate Aboriginal community groups and regional organisations, seek to (identify and locate Aboriginal sites and objects on CALM managed land and report them to the Trustees of the WA Museum).</p> <p>(b) Strategy 4 - subject to request/s from appropriate Aboriginal community groups and regional organisations, liaise with the WA Museum...(about access to and use of Aboriginal sites and objects).</p> <p>(c) Strategy 5 - subject to request/s from appropriate Aboriginal community groups and regional organisations encourage ... (and facilitate research on Aboriginal sites and objects, insofar as may be consistent with approved management and protection programs).</p> <p>(d) Strategy 6 - subject to the wishes and direction of the appropriate Aboriginal community groups and regional organisations, encourage ... (and facilitate use of Aboriginal sites and objects as a resource for developing public awareness and understanding of Aboriginal life, history and cultural traditions, but only insofar as this is consistent with approved management and protection programs).</p>	54	Text amended to cover these points.	Yes	1(b)
					Yes	1(b)
					Yes	1(b)
					Yes	1(b)
					Yes	1(b)
2	1	The strategies proposed are supported provided there is close liaison and consultation with custodian and traditional owners.	75	Agreed	No	2(a)

07

COMMENT NUMBER	NO. OF SUBS	SUMMARY OF COMMENT	SUBMISSION NUMBERS	DISCUSSION / ACTION TAKEN	PLAN AMENDED	CRITERIA
3	1	A comprehensive Aboriginal site survey should be completed before any additional boundary or tenure change is contemplated so that any site related matters can be fully considered in terms of prospective management arrangements for the CALM estate.	75	It will not always be feasible to undertake site survey prior to reserve gazettal.	No	2(f)
1	1	14.0 ENVIRONMENTAL PROTECTION <i>1 submission.</i> This Section should be retitled Fire Management.	74	Important as fire management is, there is more to environmental protection than management of fire.	No	2(d)
1	1	14.1 Fire <i>6 submissions.</i> Strategy 13 proposed change: (a) maintain a program of prescribed burning to provide and maintain biological diversity and to develop or favor habitat for specific flora and fauna species where appropriate. Other strategies which could be included are: (b) assist with research into fire behaviour and fire ecology within various Goldfields ecosystems. (c) assist in monitoring the effectiveness and impacts of fire management measures. Implement any necessary changes in the light of research and experience.	1	Text amended.	Yes	1(d)
2	1	Commends point 13 regarding program of prescribed burning of hummock grasslands should be removed. Burning in desert nature reserves should not be conducted without consideration of points 4-7 concerning "use of fire".	29	Text amended.	Yes	1(d)
3	1	An adequate plan needs to be put in place for all CALM reserves and preventative measures need to be undertaken to ensure adjoining landholder's interests are protected.	43	CALM does have a Fire Control Working Plans for all reserves.	No	2(d)
4	1	(a) Pyric uniformity will not be widely understood (b) environmental heterogeneity as a procurer could be stated more clearly. (c) use of fire; a strategy covering the possible need to use fire to the advantage of a single species (or particular community) could be helpful. (d) it may be easier to spell out some of the other methods as was done in the SCRMP.	52	Included in glossary. Text amended. Text amended. Text amended to include strategies iii, ix & x from SCRMP.	Yes Yes Yes Yes	1(e) 1(e) 1(e) 1(d)

17

COMMENT NUMBER	NO. OF SUBS	SUMMARY OF COMMENT	SUBMISSION NUMBERS	DISCUSSION / ACTION TAKEN	PLAN AMENDED	CRITERIA
5	1	(e) Strategy 12 this needs an indication that you'll do something in response.	54	Amend Strategy 12.	Yes	1(e)
		(f) Regional Strategies... it may be worthwhile adding a strategy to the effect that you will "assess the need for new file management programs on the research findings and/or experience."		No	2(d)	
		Traditional landowners and others associated with the Nature Reserve have stated their wishes to be consulted before any decisions to fire the country are made by CALM.		No	2(d)	
		(a) damage to caches of ritual objects and sacred sites may of which are specific stands of trees or other vegetation forms that could result from uncontrolled burning in the absence of traditional owners.		No	2(d)	
6	1	(b) in Strategy 4 (use planned fire only where this use is in accordance with an approved management plan)that has been established as a result of negotiations with the appropriate aboriginal community groups and regional organisations.	4	As above.	No	2(d)
		Include "in the event of this occurring again Local Fire Response Plans will be used in conjunction with CALM Fire Response Plans".		Text amended.	Yes	1(d)
		Regional Strategies - add to 12, "in the event of unseasonable conditions creating an increased fire risk, in consultation with the relevant Authorities and the Bush Fires Board, strategies will be developed in accordance with the threat identified in paragraph 14.1".		Text amended, see Strategy 12.	Yes	1(d)
1	1	14.2 Weeds <i>No submissions.</i>	43	CALM contributes to Land Conservation District and Agriculture Protection Board control programmes.	No	2(d)
1	1	14.3 Feral Animals <i>5 submissions.</i> Undertake an ongoing program of vermin control, i.e. goats, camels, etc in their reserves to eventually eradicate them from the Region.				
2	1	Concern expressed regarding the problem in the Goldfields of feral cats, and educate the public of the problems they cause with native animals.	47	Text amended in feral animals section to include new initiatives on cats.	Yes	1(d)

47

COMMENT NUMBER	NO. OF SUBS	SUMMARY OF COMMENT	SUBMISSION NUMBERS	DISCUSSION / ACTION TAKEN	PLAN AMENDED	CRITERIA
3	1	References to islands in the Goldfields Region Plan would seem unnecessary.	52	Text amended.	Yes	1(e)
4	1	Requests sufficient lead-in time to enable CALM staff and traditional owners of any part of the land regarding feral animals, and suggests the following rewording: (a) Strategy 1 ... (liaise closely with)...the appropriate Aboriginal community groups and regional organisations and ... (the Agricultural Protection Board, including its Zone Control Authorities and Regional Advisory Committees). (b) Strategy 3 ... (Prepare and maintain a 5 year feral animal control plan) ... in negotiation with the appropriate Aboriginal community groups and regional organisations. (After consultation with an APB officer and/or the environmental protection officer the plan will form the basis for the works programs). (c) Strategy 7 - plan the involvement/employment of appropriate Aboriginal persons in any feral animal control program.	54	It is inappropriate in a Regional plan to make a blanket commitment to consult with all aboriginal groups on all operations. Aboriginal groups are routinely consulted in appropriate cases, i.e. when Aboriginal interest is expressed in an issue or an area. As above.	No	2(d)
				As above.	No	2(d)
5	1	Agrees with these strategies. 14.4 Rehabilitation <i>1 submission.</i>	75		No	2(a)
1	1	In Strategy 4, the last sentence should really be in the background information, not in the Strategy. 14.5 Mining on Reserves <i>8 submissions.</i>	52	Text amended.	Yes	1(e)
1	1	If the management of mining on Nature Reserves is to become a large component of CALM's Goldfields Region operation this would justify the increase in staff numbers needed to police CALM managed lands.	41	Text amended in Section 7 to cover this point, which, many other submissions have also made.	Yes	1(d)
2	2	(a) Restriction should not be imposed to stop exploration or future mining taking place on these reserves so long as a balance can be achieved between the environment and proposed activities to minimise the impact. (b) Access be allowed to persons to use these areas for recreation and study purposes and CALM develop areas to encourage such uses, i.e. camping areas and signage of significant areas of interest.	43, 48	Government policy is beyond scope of GRDMP. CALM routinely does provide for recreation and nature study.	No	2(f) 2(d)

43

COMMENT NUMBER	NO. OF SUBS	SUMMARY OF COMMENT	SUBMISSION NUMBERS	DISCUSSION / ACTION TAKEN	PLAN AMENDED	CRITERIA
3	1	Improved co-operation and understanding between mining companies and CALM with regard to mining within reserves is to be encouraged in order to promote sustainable development of our resources. Encourage mining companies to fund flora and fauna surveys in areas they wish to exploit to increase the chances of a successful rehabilitation once mining has ceased.	47	Agreed.	No	2(d)
4	1	All areas underlain by greenstone belts, not already incorporated in Reserves, should be excluded from any expanded reserves because of their potential to host mineral deposits.	48	A representative reserve system is Government policy.	No	2(f)
5	1	(a) Applauds the proposal that CALM should liaise with mining companies but would express concern that this has not been done prior to making proposals for additional reserves within the DMP. (b) Concern is expressed at the implication of additional regulation in Strategy 2 and would question the ability to manage such regulation without delay, considering the comments regarding management capacity.	51	Consultation is made as a result of GRDMP not as a pre-requisite. Text amended in Section 7 to cover this point which many other submissions have also made.	No Yes	2(d) 1(d)
6	1	An indication of the policy name (Basic Raw Materials) should be given in the 2nd paragraph.	52	Text amended.	Yes	1(e)
7	1	Considering the continuing cultural significance of their traditional lands, Aboriginal people would recommend that CALM recognise and endorse this special relationship and suggest that the final strategy be changed to read as follows: Strategy 3 - (evaluate the likely impact of any proposed mineral resource development activities),...having regard to the informed opinions of the appropriate Aboriginal community groups and regional organisations,...(on lands managed and proposed for management by CALM and make recommendations within.	54	Agreed, however this point can be implemented under the existing, more general, wording of Strategy 3.	No	2(c)
8	1	Generally agreed, however in the event that land tenure within the CALM estate reverts to an Aboriginal organisation then other arrangements may be considered.	75	Outside the scope of the plan.	No	2(a)

COMMENT NUMBER	NO. OF SUBS	SUMMARY OF COMMENT	SUBMISSION NUMBERS	DISCUSSION / ACTION TAKEN	PLAN AMENDED	CRITERIA
1	1	<p>14.6 Gravel and Industrial Minerals 1 submission. Concern expressed over only surface gravel having been taken and when more gravel was needed the area was enlarged; this caused an unnecessarily large area to be devastated.</p> <p>14.7 Public Utilities No submissions.</p> <p>14.8 Visual Resource Management No submissions.</p> <p>14.9 Disease 1 submission. Has this been truncated? Where are the Strategies?</p>	70	Operational matter taken care of during day to day management and supervision.	No	2(c)
1		<p>15.0 RECREATION AND TOURISM 5 submissions.</p> <p>Suggests in line 5, infers that CALM includes recreation management as an objective only in response to recreation pressure is not correct. Its part of CALM's charter via the CALM Act. Suggests this Section needs 2 additions: (a) an overview of current recreational patterns in the region. (b) guidelines which will be used by the region in assessing new proposals/requests for recreational access (e.g where is active recreation appropriate) Something like Table 11 in the SCRRMP could also be considered as it has already proved a valuable guide for this region.</p>	52	Text amended	Yes	1(d)
1	1	<p>Suggests in line 5, infers that CALM includes recreation management as an objective only in response to recreation pressure is not correct. Its part of CALM's charter via the CALM Act. Suggests this Section needs 2 additions: (a) an overview of current recreational patterns in the region. (b) guidelines which will be used by the region in assessing new proposals/requests for recreational access (e.g where is active recreation appropriate) Something like Table 11 in the SCRRMP could also be considered as it has already proved a valuable guide for this region.</p>	52	Text amended	Yes	1(e)
2	1	<p>Aboriginal community request involvement in establishing the conceptual framework for a Regional Recreation plan.</p>	54	Recreation Plan for Goldfields Region has been produced	No	2(d)
3	1	<p>The Goldfields Region should produce a high quality saleable interpretive book with a price that reflects the production costs and contributes to the maintenance of these facilities.</p>	55	Good idea but covered under Strategy 3, Section 16.3.	No	2(d)

COMMENT NUMBER	NO. OF SUBS	SUMMARY OF COMMENT	SUBMISSION NUMBERS	DISCUSSION / ACTION TAKEN	PLAN AMENDED	CRITERIA
4	1	The draft management plan does not adequately address the issue of recreation and tourism, but concentrates on conservation issues and classification of the reserve system instead of addressing the issue of how it intends to utilise the areas natural assets for the public's enjoyment.	71	Issues identified by Tourism Commission are either outside this region, e.g. Peak Charles, or are already being addressed, e.g. Kalgoorlie Arboretum.	No	2(c, d)
5	1	Generally agreed, but refer to recommendations regarding consistent access standards, legislation and customary use.	75		No	2(d)
		Recoup fees and charges (p.81) <i>1 submission.</i>				
1	1	Collection of entry fees and charges for National Parks is a contentious issue. As National Parks belong to the people, there is a feeling in the community that the people should not be charged access to something that belongs to them. Imposing these fees would lead to confrontations and a worsening of an already shaky public image.	55	Many facilities belong to the people but they are still expected to pay for their use, e.g. roads, schools.	No	2(c)
		Commercial Concessions (p.82) <i>1 submission.</i>				
1	1	This needs re-wording as it implies CALM never refuses a permit.	52	Text amended	Yes	1(e)
		Overnight Stays (p.82) <i>1 submission.</i>				
1	1	Does this suggest unless studying flora and fauna permission to camp would be denied. Consider that due to the size of some of the Desert Nature Reserves it may be impossible to travel through in one day.	59	Text amended to indicate bushcamping acceptable in this situation.	Yes	1(e)
		Visitor Safety (p.82) <i>1 submission.</i>				
1	1	The name of the Act is the "Occupiers Liability Act".	52	Text amended	Yes	1(e)
		Protection of Recreation Site Values (p.83) <i>1 submission.</i>				
1	1	The last 2 lines need to be reworded.	52	Text amended	Yes	1(e)

45

97

COMMENT NUMBER	NO. OF SUBS	SUMMARY OF COMMENT	SUBMISSION NUMBERS	DISCUSSION / ACTION TAKEN	PLAN AMENDED	CRITERIA
1	1	<p>Vehicle access (p.82) <i>1 submission.</i></p> <p>(a) Concern expressed at the upgrading of tracks such as the Gunbarrel Highway and closing off smaller tracks most of which are not shown on the DMP map. Many of the small 2WD tracks lead to historic sites, places of natural beauty of which 4WD members consider this the real wilderness desert and travel with great respect.</p> <p>(b) With regard "The Heritage Commission - Explorers Heritage Trails listing, our members expressed concern that the publicity will increase the number of people visiting these fairly pristine areas.</p>	59	<p>Text amended to indicate in some cases two-wheel tracks are the preferred option.</p> <p>Heritage belongs to all - not just 4WD club members.</p>	Yes	1(d)
1	1	<p>Liaison with other Agencies (p.85) <i>1 submission.</i></p> <p>A Regional Recreation Plan is an excellent initiative but should not be used to provide a conceptual framework, as one should already be in place. What is needed is an implementation strategy which would identify a series of tasks to be actioned.</p>	71	Submission has missed the point, i.e the difference between an Area Management Plan and a Regional Management Plan.	No	2(d)
1	2	<p>Access Policies (p.82) <i>3 submissions.</i></p> <p>Opposes the use of power boats in Nature Reserves regardless of whether their use is already established. Prior use is no justification for allowing forms of recreation which damage natural ecosystems.</p>	40, 41	Noted, but the issue is a complex one.	No	2(c)
2	1	<p>Access should be allowed to the public to use these areas for recreation and study purposes, and CALM should develop areas to encourage such users, i.e camping areas and sign posting of significant areas of interest.</p>	43	CALM does promote recreation and provides facilities for field study purposes.	No	2(d)
1	1	<p>Facilities and Buildings (p.83) <i>1 submission.</i></p> <p>Opposes any proposals to demolish facilities and buildings in the Goldfields Region.</p>	41	Point covered under Section 13.4.	No	2(d)

COMMENT NUMBER	NO. OF SUBS	SUMMARY OF COMMENT	SUBMISSION NUMBERS	DISCUSSION / ACTION TAKEN	PLAN AMENDED	CRITERIA
		16.0 PUBLIC PARTICIPATION AND LIAISON				
		16.1 Community Involvement <i>3 submissions.</i>				
1	2	Endorses CALM's strategies for community involvement.	41, 75		No	2(a)
2	1	The last sentence belongs in the section covering volunteers.	52	Text amended.	Yes	1(e)
		16.2 Aboriginal Liaison <i>6 submissions.</i>				
1	1	There is no mention of the collaborative work conducted since the late 1970's to 1989 between the desert Aboriginal people and government agencies.	29	Text amended to include this important work.	Yes	1(a, e)
2	2	Strategy 2 could read Aboriginal people should be involved with CALM in both the planning and management of the conservation estate.	29, 52	Text amended.	Yes	1(e)
3	1	Virtually all land under CALM's management in the Goldfields Region will contain Aboriginal sites. CALM should actively manage the Aboriginal heritage resources on its land and involve aboriginal people in management. Proper management of Aboriginal heritage requires specialist understanding and CALM should engage a specialist archaeologist and an anthropologist on a full-time basis. CALM's policy in relation to the Aboriginal Heritage Act continues to be based on Policy Statement 11, which was drafted in 1986, due to the changes in the intervening years in relation to the expectations that Aboriginal people have towards agencies such as CALM and in their heritage.	45	Submission has missed the point. Reserve proposals are not 'developments' in the usual sense of the word, they are proposals that require compliance with existing rules before they are implemented.	No	2(d)
4	1	Strategy 3: this seems to limit the scope for Aboriginal contractors unnecessarily. Surely they should be encouraged to become involved in all aspects of land management.	52	"Management" involves a broad spectrum of activities Aboriginal people could be involved in.	No	2(d)
5	1	(a) The Aboriginal people believe it would be useful to explore variations of the community Ranger Training Programme in light of the growing Aboriginal community at Karilywarra and intermittent aboriginal presence a Tjintjorra, and important focal area inside the Gibson Desert Nature Reserve.	54	Include Aboriginal liaison officers role. Many of NC concerns will be best addressed in Area Management Plans for GDNR rather than Regional Management Plan.	Yes	1(d)

48

COMMENT NUMBER	NO. OF SUBS	SUMMARY OF COMMENT	SUBMISSION NUMBERS	DISCUSSION / ACTION TAKEN	PLAN AMENDED	CRITERIA
		<p>(b) It is likely that the Gibson Desert Nature Reserve will become the focus for future programmes. The people endorse the three strategies outlined in the DMP and would suggest the re-wording as follows:</p> <p>Strategy 1 - (Liaise and negotiate with Aboriginal People) through the appropriate Aboriginal community groups and regional organisations...(regarding land and wildlife management and tenure issues in the Goldfields).</p> <p>Strategy 2 - (Promote opportunities for Aboriginal people to actively participate with CALM in management of the conservation estate).</p> <p>Strategy 3 - (Continue contract employment of Aboriginal people for projects involving cultural resources management and seek opportunities for increasing funding of these projects) especially those projects initiated by appropriate Aboriginal community groups and regional organisations.</p>			No	2(c)
				Strategy 2 already reads as recommended here.	No	2(d)
					No	2(d)
					No	2(d)
6	1	Implementing the MP should be delayed until the implications and effects of Native Title become clear.	62		No	2(d)
7	1	<p>(a) The Council welcomes the prospect of management schemes to more closely involve Aboriginal people in the promotion, maintenance, conservation and operation of the existing CALM estate.</p> <p>(b) The Council finds the present boundaries attaching to the CALM Regional Management Plan to be inconsistent with its own boundaries and recommends that CALM consider modification to its boundaries to more appropriately reflect traditional land use patterns, transportation and cultural consideration.</p> <p>(c) The Council recommends that CALM establish a liaison structure to encourage continuing dialogue between the Council and CALM officers on matters rising from the DMP.</p> <p>(d) The Council recommends that CALM acknowledge and consider the need for a stronger Aboriginal input, including traditional owners, and choices between land use within the CALM estate such as national parks, nature reserves etc., where present regulations and management practices may limit Aboriginal access.</p>	75		No	2(a)
				In most respects the Regional boundary does reflect land use patterns and cultural considerations.	No	2(f)
				Text amended	Yes	1(d)
					No	2(d)

COMMENT NUMBER	NO. OF SUBS	SUMMARY OF COMMENT	SUBMISSION NUMBERS	DISCUSSION / ACTION TAKEN	PLAN AMENDED	CRITERIA
1	1	16.3 Community Education and Interpretation <i>3 submissions.</i> Jargon terms such as 'interpretation' should be explained and greater emphasis placed on the potential interpretive opportunities and themes for the Goldfields.	2	Interpretation is not a jargon term.	No	2(d)
2	1	Deterrence is a very effective form of education; a strong policing role by CALM officers is needed.	40	Staff training is beyond scope of RMP.	No	2(c)
3	1	When making a case for establishing recreational educational and environmental interpretation facilities in a national park context, emphasis should also be given to including interpretation of cultural heritage and or historical material.	57	CALM does and will continue to interpret historical and cultural heritage.	No	2(d)
1	1	16.4 Volunteers <i>1 submission.</i> A greater awareness of the need for volunteers with CALM should be given, and promoted together with details of roles that volunteers are able to fulfil.	47	Text amended to include the roles of volunteers.	Yes	1(b)
		16.5 Information and Advisory Services <i>No submissions.</i>				
1	1	16.6 Goldfields Dust Abatement Committee <i>1 submission.</i> This Section comes close to an admission of awareness of the magnitude of the ecological disaster that has occurred in this region over the last 100 years. Scientists rank the loss of biodiversity as one of the world's most important environmental threats.	46	Biodiversity is not mentioned in Section 16.6.	No	2(c)
1	1	17.0 FOREST PRODUCTS <i>5 submissions.</i> Increase utilisation of the timber resources by encouraging locally produced furniture and quality timber products.	47		No	2(d)
2	1	Firewood: Regional Policy point 1: surely this does not apply to conservation reserves? Needs to be clarified.	52	Text amended.	Yes	1(e)

COMMENT NUMBER	NO. OF SUBS	SUMMARY OF COMMENT	SUBMISSION NUMBERS	DISCUSSION / ACTION TAKEN	PLAN AMENDED	CRITERIA
3	1	<p>CALM should investigate the issuing of Corporate Seed Collecting Licences for scientific prescribed purposes in the Goldfields Region:</p> <p>(a) rehabilitation of minesites within the Goldfields generally involve either the purchase of "native" seed from merchants or collection of seed from the surrounding vegetation to be used on disturbed areas.</p> <p>(b) seed purchased from merchants may have collected anywhere in the State and generally from a different species genetic strain as to that which occurs near the rehabilitation site.</p> <p>(c) locally obtained seed should be encouraged for rehabilitation purposes. A "Corporate licence" for companies employees would allow employees to collect seed opportunistically. It should not be issued to people who intend selling the seed.</p>	55	<p>Good idea but outside scope of GRDMP.</p> <p>As above.</p> <p>As above.</p> <p>As above.</p>	<p>No</p> <p>No</p> <p>No</p> <p>No</p>	<p>2(c)</p> <p>2(c)</p> <p>2(c)</p> <p>2(c)</p>
4	1	<p>CALM should investigate the feasibility of entering into contract agreements for commercial seed collecting in the Goldfields Region:</p> <p>(a) unlicensed seed collecting in the Goldfields is a problem. Seed is collected opportunistically and is sold at a cut price to minesites.</p> <p>(b) difficult to gauge the environmental impact of licensed and unlicensed seed collecting. With the existing and forecasted demand for seed being very high, the potential for major degradation of the environment especially close to townsites, exists.</p> <p>(c) the provision for policing the licences in the field appears inadequate.</p> <p>(d) a similar system for seed collection may be more effective, as the setting up of contracts for firewood cutters.</p>	55	<p>Good idea but outside scope of GRDMP</p> <p>As above.</p> <p>As above.</p> <p>As above.</p> <p>As above.</p>	<p>No</p> <p>No</p> <p>No</p> <p>No</p>	<p>2(c)</p> <p>2(c)</p> <p>2(c)</p> <p>2(c)</p>
5	1	<p>Would a station homestead come under the householder umbrella, to enable them to obtain firewood without special written authority - needs clarification.</p>	72	Text amended	Yes	1(e)
6	1	<p>The Council supports the continuing practice of issuing firewood cutting licences to Aboriginal organisations as a base for local enterprises and employment.</p>	75		No	2(a)

50

COMMENT NUMBER	NO. OF SUBS	SUMMARY OF COMMENT	SUBMISSION NUMBERS	DISCUSSION / ACTION TAKEN	PLAN AMENDED	CRITERIA
7	1	The requirement for a pastoralist to obtain a Forest Produce Licence to cut fence posts on his own property is considered quite unreasonable. The Practicality of another licence is dubious and would be almost impossible to police.	72	The authors mistake, text amended.	Yes	1(e)
		18.0 RESEARCH 18.1 Research in CALM <i>1 submission.</i>				
1	1	Research Division's change of structure, component programs and name change to Science and Information Division may need to be included.	29	Text amended.	Yes	1(e)
2	1	Another strategy for consideration is the regional collation of biological and other information collected by researchers in the Goldfields Region and the rapid adoption of results or recommendations which would lead to better management of reserves or resources within financial or other constraints.	29	Text amended.	Yes	1(d)
		18.2 Research in other Institutions <i>1 submission.</i>				
1	1	Naming any consultancy service could be regarded as advertising in DMP's or any other government documents and not appropriate.	6	Text amended to withdraw reference to specific consultancy.	Yes	1(b)
		19.0 TERM OF PLAN <i>3 submissions.</i>				
1	1	It is important to prioritise activities recommended in the draft plan given its 10 year time frame. It would be worth allocating implementation of the proposed Goldfield Woodlands National Park to a much higher priority given the significance that such a facility would have within the Goldfields in terms of conservation and tourism.	47		No	2(d)

51

52

COMMENT NUMBER	NO. OF SUBS	SUMMARY OF COMMENT	SUBMISSION NUMBERS	DISCUSSION / ACTION TAKEN	PLAN AMENDED	CRITERIA
2	1	In paragraph 1 line 3, it is understood that the NPNCA and LFC determine whether or not a proposal change is "significant" or not. On this basis, they decide whether the plan must be re-released as a draft. The insertion of the word "significant" before "changes" would avoid creating an unrealistic expectation in the community.	52	Text amended.	Yes	1(e)
3	1	The Gibson Desert Nature Reserve should be reassessed in the light of ongoing negotiations between CALM and the Council. The Council look forward to negotiating a similar formal management arrangement as CALM has with Karijini and Pumululu National Parks traditional owners.	54	Text amended to show higher priority for preparation of area management plan for GDNR.	Yes	1(d)
1	1	APPENDIX 1 <i>3 submissions.</i> State Forests and Timber Reserves table should read: Kangaroo Hill Area 6 656.8 ha Total Area 28 575.5 ha Karramindie SF No.8	4	Text amended to incorporate these corrections.	Yes	1(e)
2	1	Sandalwood Reserves should have sandalwood deleted from Lakeside, Calooli, Yellari, Schahill.	4	As above.	Yes	1(e)
3	1	Area in hectares for: Emu Rock should read 8 187.0 Bullock Holes should read 13 312.0 Total area remains the same.	4	As above.	Yes	1(e)

APPENDIX 1. SUBMITTORS TO THE DRAFT MANAGEMENT PLAN

Business/Industry

Amalgamated Syndicate
Ashpal Pty Ltd
Associated Gold Field N.L.
Association of Mining and Exploration Companies (Inc)
Aztec Mining Company Ltd
BHP Minerals
Chamber of Mines and Energy
Coolgardie Gold N.L.
Cyprus Gold Aust. Corporation
Dalrymple Resources N.L.
Dune Resources N.L.
E. Dechow & Co. Pty Ltd
Eltin Minerals
Inland Gold Mines N.L.
Loongana Lime Pty Ltd
Martin Gold Mines N.L.
MIM Exploration Pty Ltd
Newcrest Mining Ltd
Normandy Poseidon Ltd
Pancontinental Mining Ltd
Perilya Mines N.L.
Poseidon Gold Ltd
Prince of Wales Mining Syndicate
R. Hart, Environmental Consultants Corp.
Stockdale Prospecting Ltd
Wedari Pty Ltd
Western Mining Corporation Ltd

Pastoralists

J. & E. Truran, Mt Jackson Station
J. & H. Campbell, Fraser Range Station
J. Cotter, Madoonia Downs Station
Jones Grazing Company
Jones Group
M. McPherson, Diemals Station
Pastoral Board of W.A.
R. Wood, Nullarbor-Eyre Hwy LCDC
T. McPherson, Diemals Station
T.E. Cullen & Sons, Calooli Station
W.A. Farmer's Federation

State Government

Bush Fires Board
Department of Agriculture, G. Carter
Department of Agriculture, J. Riches
Department of Minerals and Energy
Department of Planning and Urban Development
Main Roads Department
W.A. Museum
W.A. Tourism Commission
Water Authority of W.A., Goldfields Region
Westrail

Community - Clubs/Organisations

Amalgamated Prospectors & Leaseholders Association
Goldfields Naturalist's Club
Institution of Engineers
Land Rover Owners of W.A.
Ngaanyatjarra Council
Prospectors Association
Western Desert Regional Council
Wongi Regional Council

Community - Individuals

B.H. Smith
Dr A.J. Graham
G. Baker
J. Sellenger & G. Pinnegar
L. Stockdale
P. Stanley
W. & L. Powlesland
W.E. Barrett

Local Government

City of Kalgoorlie-Boulder
Shire of Dundas
Shire of Laverton
Shire of Leonora
Shire of Yilgarn

Educational Institution

Kalgoorlie College

CALM Staff

R. Sneewjagt

L. Lent

K. McNamara

C. Marmion

D. Pearson

I. Herford

R. Thomas