

Wanjarri Nature Reserve

Analysis of Public Submissions



Management Plan No 35



Department of Conservation
and Land Management



National Parks and Nature
Conservation Authority

WANJARRI NATURE RESERVE

SUMMARY AND ANALYSIS OF PUBLIC SUBMISSIONS

TO THE DRAFT MANAGEMENT PLAN

Department of Conservation and Land Management
for the
National Parks and Nature Conservation Authority
Perth, Western Australia, 1996

CONTENTS

	Page
SUMMARY OF THE ANALYSIS OF PUBLIC SUBMISSIONS	
Introduction	ii
Analysis of Public Submissions	ii
Analysis Table	iii
Analysis Process	iv
GENERAL COMMENTS	
1. Overview	1
2. Values	2
3. Community Involvement	2
PRINCIPAL MANAGEMENT DIRECTIONS	
4. Policies and Goals	2
5. Land Tenure and Boundaries	2
MANAGEMENT FOR CONSERVATION	
6. Conservation Overview... ..	3
7. Geology, Landforms and Soils	3
8. Vegetation and Flora	3
9. Fauna	4
10. Aboriginal History	5
11. European History	5
12. Landscape	5
13. Erosion, Mining and Rehabilitation	6
14. Fire	6
MANAGEMENT FOR RECREATION	
15. Overview	6
16. Access	6
17. Day Use	7
18. Camping	7
19. Domestic Animals	7
COMMUNITY RELATIONS	
20. Information and Interpretation	7
21. Education	7
RESEARCH AND MONITORING	
22. Research Strategy	7
23. Nature Conservation Research	8
24. Social Research	8
APPENDIX 1	
Submitters to the Draft Management Plan	9

SUMMARY OF THE ANALYSIS OF PUBLIC SUBMISSIONS

INTRODUCTION

Presented in this document is the summary of submissions to the Draft Management Plan (DMP) for Wanjarri Nature Reserve. The Draft Plan was released for public comment on 8 September 1995, by Mr Tom Day, Chairman of the National Parks and Nature Conservation Authority, on behalf of the Hon. Peter Foss, Minister for the Environment. The Plan was available for comment for a period of two months to 10 November 1995, however, if the Department had been notified before the closing date, late submissions were accepted.

The Plan was distributed to a number of Government agencies, tertiary institutions, conservation and recreation groups, local authorities and individuals. In addition, copies of the Plan were available for purchase from Departmental offices. Copies of the Plan could also be viewed at local libraries, Shire offices and offices of the Department.

After release of the Plan, advertisements were placed in the Government Gazette as well as local and State newspapers, advising that the Plan was available for public comment. In addition, articles featuring aspects of the Plan appeared in the Kalgoorlie Miner and radio coverage was given to the Plan. Letters advising of the Plan's availability were also sent direct to numerous individuals and organisations.

Number and Origin of Submissions Received

A total of 9 submissions were received (see Appendix 1 for a list of submitters). All of these were substantive submissions, ie. no proformas nor petitions were received.

A breakdown of the original of submissions is as follows:

Industry/business	2
State Government	2
Community - individuals	4
Educational Institutions	1

ANALYSIS OF PUBLIC SUBMISSIONS

Submissions to the Wanjarri Nature Reserve Draft Management Plan were reviewed in three stages:

- (A) As submissions generally commented on more than one section of the Draft Plan, the comments were summarised and allocated to the relevant sections of the Plan.
- (B) The summarised comments were analysed according to a set of criteria.
 1. Changes *were* made to the Draft Plan if a submission:
 - (a) provided additional resource information of direct relevance to management;

- (b) provided additional information on affected user groups of direct relevance to management;
 - (c) indicated a change in (or clarified) Government legislation, management commitment or management policy;
 - (d) proposed strategies that would better achieve management goals and objectives; or
 - (e) indicated omissions, inaccuracies or a lack of clarity.
2. Changes were *not* made to the Draft Plan if:
- (a) there was clear support for the draft proposals;
 - (b) a neutral statement was offered, or no change was sought;
 - (c) the submission addressed issues beyond the scope of the Plan;
 - (d) the submission made points which were already in the Plan, or had been considered during Plan preparation;
 - (e) existing strategies and recommendations appeared to be the most practical, where submissions were in conflict with others or where resources are limited; or
 - (f) the submission contributed options which were not feasible (generally due to some aspect of existing legislation or Government policy).

The analysis process is illustrated in the flow chart opposite which also indicates what action was taken in cases where the comment did not lead to a change in the Plan.

- (C) The Draft Management Plan was amended where necessary. Minor editorial changes were also made.

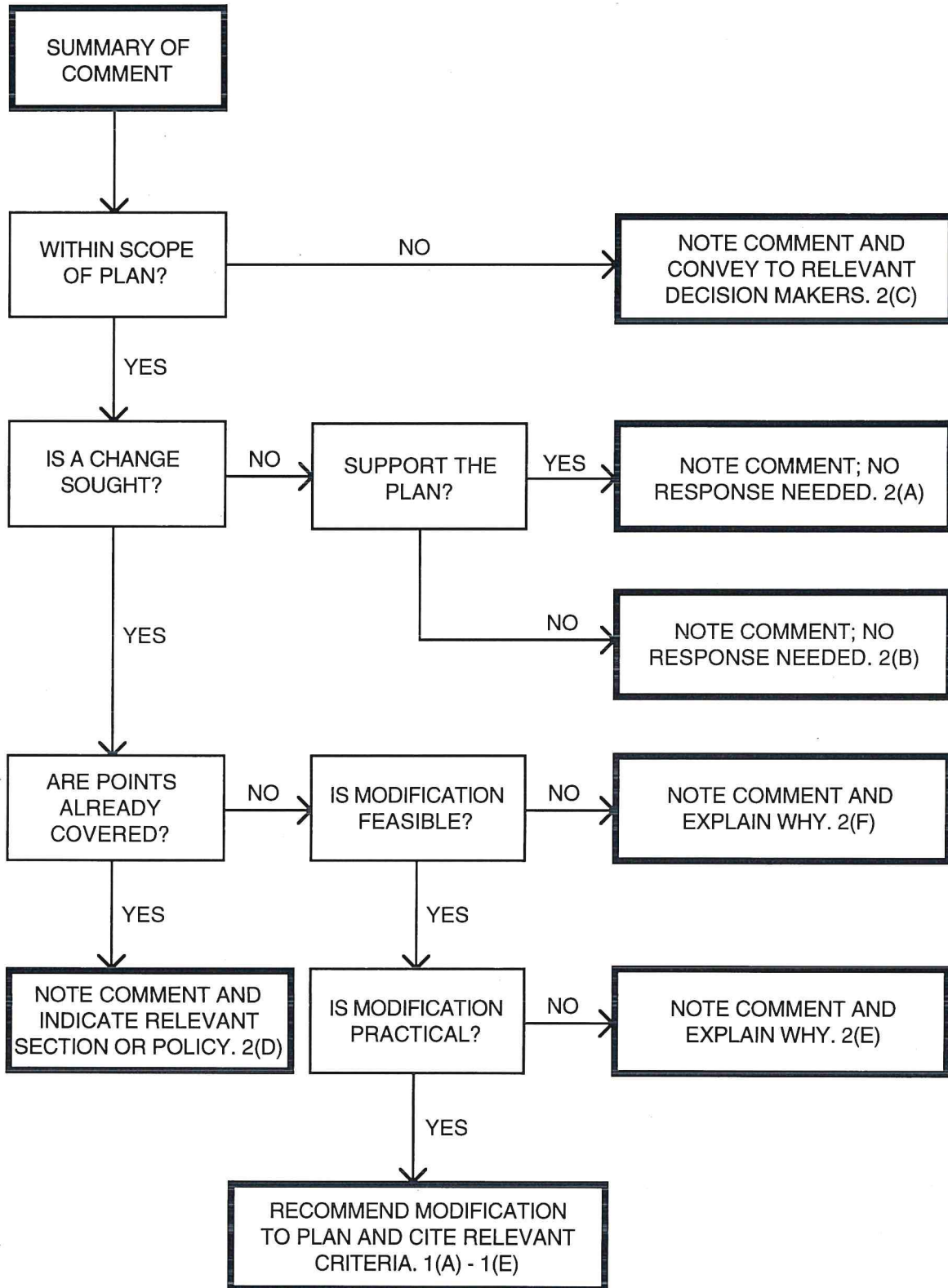
Comments made in submissions have been assessed entirely on the cogency of points raised. No subjective weighting has been given to any submission for reasons of its origin or any other factor which would give cause to elevate the importance of any submission above another.

ANALYSIS TABLE

The Analysis Table in this document contains:

- The number of different comments made about each section of the Draft Plan;
- The number of submissions received making each comment;
- A summary of each comment made on the Draft Plan;
- An indication of what action was taken in the Final Plan, or a discussion on why the comment did not result in an amendment to the Plan;
- An indication whether or not the comment resulted in an amendment to the Final Plan; and
- The criterion by which each comment was assessed.

ANALYSIS PROCESS



COMMENT NUMBER.	NO. OF SUBS.	SUMMARY OF CONTENT	DISCUSSION / ACTION TAKEN	PLAN AMEND	CRITERIA
1	1	GENERAL Supports recommendations and strategies.		No	2(a)
2	1	Commended the presentation of the draft and the identification of the key issues.		No	2(a)
3	1	Supportive of plan particularly the descriptions of the values identified.		No	2(a)
4	1	Report is very general and not tailored to the Reserve and the issues of the region.		No	2(b)
5	1	Supports the direction of the draft regarding ways to enhance sustainable development. However, the plan is seen as top heavy in relation to the issues discussed, doesn't discuss what will actually be done in the field and does not read precisely enough.		No	2(a)(c)(e)
6	1	Supportive of regional approach to conservation.		No	2(a)
1	1	SECTION 1. OVERVIEW Biodiversity has been enhanced by the destocking of pastoral land.	CALM aware of this situation on adjoining land.	No	2(a)
2	1	Plan omits reference to joint management with Aboriginal people. Involvement of Aboriginal people will assist CALM in achieving some of its aims.	Discussions held with Aboriginal people over the development of the draft management plan . Aboriginal people will be consulted on matters relating to research, cultural history or other areas where they have interest or expertise.	No	2(d)
3	1	Comments about CALM's active management of surrounding destocked pastoral leases.	This is incorrect. CALM does not manage any of the adjoining pastoral land.	No	2(c)
4	1	Reference to CALM's feral animal baiting policy and the closing down of bores on Barwidgee.	CALM has no involvement with baiting operations on Bargwidgee nor the closure of bores.	No	2(f)
5	1	Need for statement regarding the issue of sustainable development of the area as a whole and the part played by sustainable development in maintaining the environment and quality of life for all Australians.	Agreed.	Yes	1(a)

COMMENT NUMBER.	NO. OF SUBS.	SUMMARY OF CONTENT	DISCUSSION / ACTION TAKEN	PLAN AMEND	CRITERIA
6	1	Change in status to Conservation Park supported.			
1	1	SECTION 2. VALUES Support for the protection of Aboriginal sites.		No	2(a)
2	1	Support for conservation, education, and research.		No	2(a)
1	1	SECTION 3. COMMUNITY INVOLVEMENT Invite local Aboriginal groups to participate in planning process and to comment on the draft.	This has been done.	No	2(b)
1	1	SECTION 4 POLICIES AND GOALS Re: 4 (iii) Maintain ongoing relationships with interested Aboriginal groups regarding future management of the Reserve.	This is the intention. The authors believe that this issue is adequately addressed in the text.	No	2(b)
2	1	Agree with general policies and goals of the plan.		No	2(a)
1	1	SECTION 5. LAND TENURE AND BOUNDARIES Not supportive of change in classification from Nature Reserve to Conservation Park. Suggests changing legislation, appoint Hon. CALM officers to help manage visitor impacts.		No	2(d)
2	3	Supportive of change from Nature Reserve to Conservation Park.		No	2(a)
3	1	Clarification on the term "demarcation in the field" (see p. 5).	Authors believe that this is adequately addressed in the text.	No	2(d)
4	1	Ensure the proposed rock waste dump does not impact on Aboriginal sites.	An investigation of the location of known sites will be undertaken prior to development work commencing. Field surveys, involving Aboriginal people where appropriate, will also be undertaken.	No	2(d)
5	1	Does defining correct boundaries mean reconstructing the Reserve fences on those redefined boundaries?	This is not the intention. CALM will continue to manage to existing fencelines. Future opportunities may provide situations to re-fence on cadastral boundaries.	Yes	1(a)

COMMENT NUMBER.	NO. OF SUBS.	SUMMARY OF CONTENT	DISCUSSION / ACTION TAKEN	PLAN AMEND	CRITERIA
6	1	What are the implications for CALM and adjoining land holders if classification changed?. Would oppose if change heightened the risk of a Native Title Claim.	Native title claim already exists over this area.	No	2(e)
7	1	Management plan should state the differences between a nature reserve and a conservation park.	Brief description will be provided.	Yes	1(e)
8	1	Explain why change in classification not foreshadowed in Regional Plan.	Issue has been brought into focus as a result of the preparation of this area management plan. The change in classification is now considered to be the best option after carefully considering all aspects of managing the land in a way that does not compromise any of the important values while at the same time allow for properly managed zoned recreational activities.	No	2(e)
9	1	Management plan should explain the process by which the land swap was made, why this was supported by the NPNCA and CALM and what the benefits are.	This land swap was considered the best option for both CALM and the mining company mainly on conservation and Aboriginal cultural grounds.	No	2(e)
1	1	SECTION 6. CONSERVATION OVERVIEW Joint management is not defined (p. 9).	Reword to reflect more accurately the CALM Act and to reflect integrated land management partnership.	Yes	1(a)
1	1	SECTION 7. GEOLOGY AND LANDFORMS Recommends changing priority of strategy 2 from L to M.	Agree.	Yes	1(c)
2	1	Agrees with recommended strategies and priorities.		No	2(a)
3	1	Recommends use of the land mapping system used in the WARMS rather than the system used in the Biological Surveys of the Goldfields.	The land system mapping approach may have limitations when applied to ecological processes. The landform mapping units developed for the Biological Surveys have been used as all the biological data is presented using this approach. As more information comes to light, this will be reviewed..	No	2(e)
4	1	Change priority of strategy 2 from L to H.	See comment 1 this section.		
1	1	SECTION 8. VEGETATION AND FLORA Change <i>Eremophila leucophylla</i> to <i>E. forrestii</i> .	This genus is undergoing revision at present. Tough not published as yet, this name change is believed to be imminent.	Yes	1(a)

COMMENT NUMBER.	NO. OF SUBS.	SUMMARY OF CONTENT	DISCUSSION / ACTION TAKEN	PLAN AMEND	CRITERIA
2	1	Agree with all recommended strategies.		No	2(a)
3	1	Change priority of recommended strategy 7 from H to M .	Principle of maintaining surrounding lands for conservation is very important.	No	2(e)
4	1	Because of the small size of the nature reserve, interactive management with neighbours a high priority.	Authors agree.	No	2(a)
5	1	Acknowledge land management programs on adjoining lands and the benefit of integrating these with those developed by CALM.	Agree.	Yes	1(c)
1	1	SECTION 9. FAUNA No mention of the date of the remains of mammals found in the surface cave deposit.	Date not stated in the reference material.	Yes	1(a)
2	1	With reference to the mallee fowl in the threatened species para. , reword to 'known to have existed'.	Agree.	Yes	1(a)
3	2	Change priority of recommended strategy 2 from H to M or L .	Authors believe that it is appropriate to prepare recovery plans for threatened species, such as the mulgara, to ensure its continued survival and persistence in the area.Recovery plans include the issue of feral animal control. Once predators are controlled re-introduction of animals will be undertaken as part of CALM's nature conservation strategy.	No	2(d)
4	1	Priorities are confused and do not emphasise the actual doing.	Management plans of this type are strategic in nature. On the ground activities are described in an operational plan.	No	2(c)
5	1	Change priority of recommended strategy 4 from M to H .	Agree.	Yes	1(a)
6	1	Considerable research will be necessary prior to enacting recommended strategy 2.	Agree - see strategy 1 same section.	No	2(d)
7	1	Support for the priorities set for feral animal management.		No	2(a)
8	1	Include strategy for the location and management of threatened species.	Believe this is adequately covered in strategy 1.	No	2(d)

COMMENT NUMBER.	NO. OF SUBS.	SUMMARY OF CONTENT	DISCUSSION / ACTION TAKEN	PLAN AMEND	CRITERIA
9	1	Develop co-operative programs with adjoining landholders for control of feral animals.	Agree. Make changes to strategy 6 wording.	Yes	1(c)
1	1	SECTION 10. ABORIGINAL HISTORY Pleasing to note the high priority given to consultation and protection of Aboriginal sites.		No	2(a)
2	1	Support for the training of CALM staff in this area of their activities.		No	2(a)
3	2	Recommends consultation with Aboriginal people regarding the provision of interpretive material.	Make changes to text in section 20 - Information and interpretation to reflect this important resource.	Yes	1(a)
4	1	Change the word culture to law.	Not raised by Aboriginal groups making submissions.	No	2(d)
5	1	Recommend that the wording of strategy 3 be reworded to specify the Goldfields Land Council.	Authors disagree. Consultation should be with any Aboriginal people - individuals or groups, who have knowledge that will assist CALM in management of the land.	No	2(d)
6	1	Agree with recommended strategy 4 dependant on traditional owners recognition of those sites.	The provisions of the Aboriginal Heritage Act 1972 - 1980 require that CALM protects these sites.	No	2(d)
7	1	Recommends appointing an Aboriginal liaison officer within the Department of CALM.	While a worthy suggestion, it is none-the-less outside the scope of this management plan. It is however addressed in the GRMP.	No	2(f)
1	2	SECTION 11. EUROPEAN HISTORY Agree with all recommended strategies.		No	2(a)
2	1	The term area seems to have become synonymous with the Reserve.	The Reserve is part, in an historical perspective, of the area.	No	2(b)
1	1	SECTION 12. LANDSCAPE Define CALM's policy number 34 in an appendix to the document.	A copy of this document is available from CALM offices. It has not been included as an appendix to keep production costs down.	No	2(d)
2	1	Clarify CALM's Visual Landscape Management Guidelines.	As above.	No	2(d)

COMMENT NUMBER.	NO. OF SUBS.	SUMMARY OF CONTENT	DISCUSSION / ACTION TAKEN	PLAN AMEND	CRITERIA
3	1	Clarify need for landscape management strategies.	Agree. Relates to CALM managed land.	Yes	1(c)
1	1	SECTION 13. EROSION, MINING & REHAB. Do the first two objectives refer to the Reserve or the lands around the Reserve?	Should be read in the context of Wanjarri N R.	Yes	1(e)
2	1	Change the wording in the last para. on p.20 from "there appears to be" to 'there is'.	Agree.	Yes	1(e)
3	1	Clarify CALM's rehabilitation policy - show as an appendix.	See previous comments.	No	2(d)
4	1	Upgrade the term "memorandum of understanding" to policy.	Not considered necessary.	No	2(f)
5	1	Application for mining tenements should be assessed with regard to the protection of Aboriginal heritage.	This issue relates to DME, not CALM.	No	2(c)
6	1	Clarify reasons for opposing mining on the Reserve.	See strategy 2.	No	2(d)
7	1	Clarify the concept of a zone of influence.	Agree.	Yes	1(c)
1	1	SECTION 14. FIRE Agree with recommended strategies 1 and 2, but only after preliminary research into the impacts of such burning has been completed.	Authors agree in principle but the reality of protection from the effects of catastrophic wildfires is that some strategic burning will be necessary in the short term.	No	2(e)
2	1	Adjacent areas presumably refers to pastoral areas.	Areas of the reserve adjacent to the mulga complexes.	Yes	1(e)
3	1	Assumes recommended strategies 1 and 2 refers to Reserve and surrounding pastoral leases.	See strategy 3.	Yes	1(e)
4	1	Supports fire management strategies.		No	2(a)
		SECTION 15. MGT. FOR REC. OVERVIEW No submissions.			
1	1	SECTION 16. ACCESS As a conservation park will the policy of not maintaining tracks be changed?	Policy will not change as recreation activities are proposed in a limited area around the old shearing shed.	No	2(b)

COMMENT NUMBER.	NO. OF SUBS.	SUMMARY OF CONTENT	DISCUSSION / ACTION TAKEN	PLAN AMEND	CRITERIA
2	1	Will the new access track through Yakabindie be extended onto the Reserve? (make wording clearer).	It should be obvious that, <i>ipso facto</i> , the track will provide access onto the Reserve.	Yes	1(e)
3	1	Agree with recommended strategies.		No	2(a)
4	1	Assessment of access track should be made in relation to Aboriginal sites.	Agree - see section 10.	No	2(b)
5	1	Support for strategies.		No	2(a)
		SECTION 17. DAY USE			
1	1	Agree with all recommended strategies.		No	2(a)
2	1	As a conservation park will camping be allowed?	See section 18 - camping.		
		SECTION 18. CAMPING			
1	1	Will camping be allowed in a conservation park?	Although addressed in the introduction (p.1, last para.) this issue could be dealt with in this section of the final plan.	Yes	1(e)
2	2	Agree with recommended strategies but increase number of Hon. CALM officers to 2.	The appointment of... is plural in the text but singular in the recommendations.	Yes	1(e)
3	1	Any development of facilities must take into account the issue of Aboriginal sites.	Agree see section 10.	No	2(e)
4	1	Supports the strategies.		No	2(a)
		SECTION 19. DOMESTIC ANIMALS No submissions.			
		SECTION 20. INFORMATION & INTERPRETATION			
1	1	Agree with all recommended strategies.		No	2(a)
		SECTION 21. EDUCATION			
1	2	Agree with all recommended strategies.		No	2(a)
		SECTION 22. RESEARCH STRATEGY No submissions.			

COMMENT NUMBER.	NO. OF SUBS.	SUMMARY OF CONTENT	DISCUSSION / ACTION TAKEN	PLAN AMEND	CRITERIA
1	1	SECTION 23. NATURE CONS. RESEARCH Disagreement with the proposition by Moriarty (in ref.) that the dead Mulga around the old shearing shed is the result of the effects of frost.	This is the only published ref. regarding the possible cause of degradation amongst the Mulga. The reader is free to challenge this conclusion.	No	2(d)
2	1	Change the priority of recommended strategies 4 and 5 from M to H .	Agree, see also section 9 strategy 4.	Yes	1(c)
3	2	Agree with all recommended strategies.		No	2(a)
1	2	SECTION 24. SOCIAL RESEARCH Agree with all recommended strategies.		No	2(a)
2	1	If change of classification is made change priority of recommended strategies 1 and 2 from M to H .	See section 17 strategy 2.	No	2(d)
3	1	Consult with Aboriginal groups in relation to research proposals as appropriate.	Agree - see section 10.	No	2(d)

APPENDIX 1

SUBMITTORS TO THE DRAFT MANAGEMENT PLAN

Business/Industry

Dominion Mining Limited
Western Mining Corporation Limited

State Government

Department of Agriculture Western Australia
Aboriginal Affairs Department - Goldfields Region

Community/Individuals

Jean Lyneham (Moriarty)
Andy Chapman
Len Boladeras
Western Desert Puntukurnuparna Aboriginal Corporation (part submission)

Educational Institution

Kalgoorlie College