

# **KARIJINI NATIONAL PARK**

## **ANALYSIS OF PUBLIC SUBMISSIONS TO THE DRAFT MANAGEMENT PLAN**

Department of Conservation and Land Management  
for the  
National Parks and Nature Conservation Authority  
Perth Western Australia 1999

## CONTENTS

	Page
INTRODUCTION	
ANALYSIS OF PUBLIC SUBMISSIONS ... ..	ii
Method of Analysis ... ..	ii
Number and Origin of Submission ... ..	iii
ANALYSIS TABLE ... ..	iii
ANALYSIS PROCESS ... ..	iv
<b>ANALYSIS OF PUBLIC SUBMISSIONS</b>	
General Comments ... ..	1
<b>INTRODUCTION</b>	
1. Overview ... ..	1
2. Park Management ... ..	2
3. Government Decisions ... ..	2
<b>PART A: KARIJINI NATIONAL PARK - BACKGROUND AND RESOURCES</b>	
A.1 Park Boundaries and Tenure ... ..	2
A.2 Natural Resources ... ..	3
A.3 Cultural Resources ... ..	4
A.4 Mining and Exploration ... ..	4
A.5 Public Use ... ..	5
A.6 Living Areas for Aboriginal Traditional Owners ... ..	6
<b>PART B: KARIJINI NATIONAL PARK - MANAGEMENT</b>	
B.1 Park Management ... ..	7
B.2 Park Boundaries and Tenure ... ..	7
B.3 Management of Natural Resources ... ..	8
B.4 Management of Cultural Resources ... ..	9
B.5 Mining and Exploration ... ..	9
B.6 Marandoo ... ..	10
B.7 Management for Public Use ... ..	10
B.8 Management for Residents ... ..	14
B.9 Safety ... ..	14
B.10 Park Administration ... ..	15
B.11 Research and Monitoring ... ..	15
B.12 Plan Implementation ... ..	15
Maps ... ..	15
<b>APPENDICES</b>	
<b>APPENDIX 1</b>	
List of submitters ... ..	17

## INTRODUCTION

This document is an analysis of public submissions to the Karijini National Park Draft Management Plan 1995.

The Karijini National Park Draft Management Plan 1995 was released for public comment on 5 March 1996 for a period of four months. Late submissions were accepted. A total of 16 public submissions were received. All submissions have been summarised and changes have been made to the plan where appropriate.

Following the release of the plan, advertisements were placed in local and Statewide newspapers advising that the draft management plan was available for comment. The draft plan was distributed to State Government departments, tertiary institutions, recreation and conservation groups, local authorities, libraries and numerous individuals who expressed interest during the preparation of the draft. Copies of the plan were available for perusal at CALM and local government offices. The plan was available for purchase from CALM's State Operations Headquarters and the CALM local District Office.

## ANALYSIS OF PUBLIC SUBMISSIONS

### Method of Analysis

The public submissions to the Karijini National Park Draft Management Plan were analysed according to the process depicted in the flow chart overleaf. More specifically:

- The points made in each submission were collated according to the section of the draft plan they addressed.
- Each point made was assessed using the following criteria:
  1. The draft management plan **was amended** if the point:
    - (a) provided additional resource information of direct relevance to management;
    - (b) provided additional information on affected user groups of direct relevance to management;
    - (c) indicated a change in (or clarified) Government legislation, management commitment or management policy;
    - (d) proposed strategies that would better achieve management goals and objectives; or
    - (e) indicated omissions, inaccuracies or a lack of clarity.
  2. The draft management plan **was not amended** if the point:
    - (a) clearly supported the draft proposals;
    - (b) offered a neutral statement, or no change was sought;
    - (c) addressed issues beyond the scope of the plan;
    - (d) was already in the plan, or had been considered during plan preparation;
    - (e) was one amongst several widely divergent viewpoints received on the topic and the recommendation of the draft plan was still considered the best option;
    - (f) contributed options which were not possible (generally due to some aspect of existing legislation, Government or departmental policy).

- The reasons why recommendations in the draft plan were or were not changed, and the relevant criteria used, were discussed with each comment. Minor editorial changes referred to in the submissions have also been made.

Submissions have been assessed entirely on the cogency of points raised. No subjective weighting has been given to any submission for reasons of its origin or any other factor which would give cause to elevate the importance of any submission above another.

### **Number and Origin of Submissions**

The number and place of origin of submissions are listed below.

	Number	Percentage
Individuals	2	13
Community Organisations	4	25
Private Sector Corporations	1	6
Government: State	8	50
Local	1	6
<b>TOTAL</b>	<b>16</b>	<b>100</b>

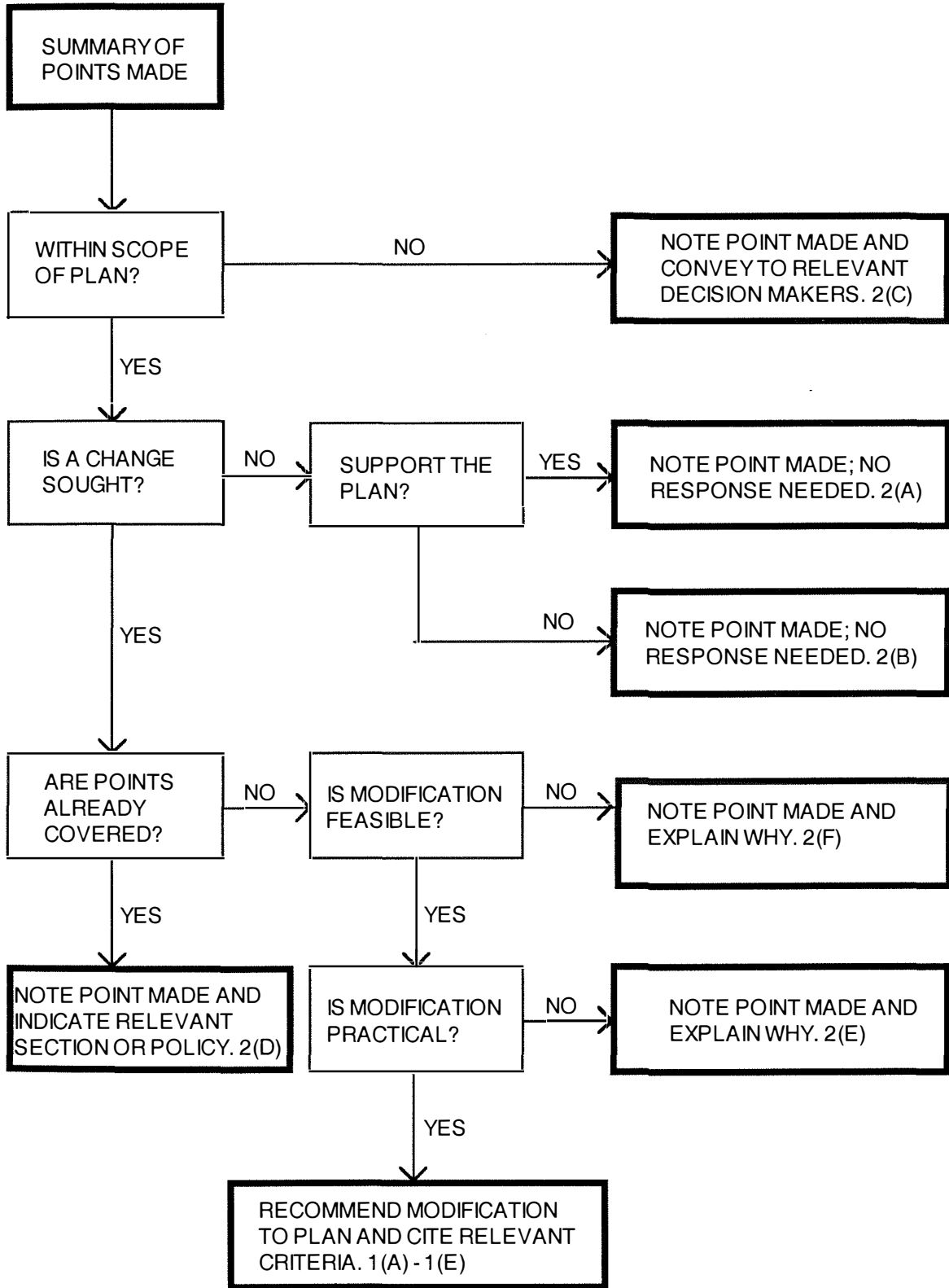
A list of the people and organisations who made submissions to the Karijini National Park Draft Management Plan is given in Appendix 1.

### **ANALYSIS TABLE**

The analysis table contains:

- The number of different points made about each section of the draft plan;
- A summary of each point made on the draft plan;
- The number of submissions making each point;
- An indication of whether or not the point resulted in an amendment to the final plan;
- A discussion on why the point did not result in an amendment to the final plan, or an indication of what action was taken in the final plan; and
- The criteria by which each point was assessed.

## ANALYSIS PROCESS



SUMMARY OF COMMENT	DISCUSSION / ACTION TAKEN	PLAN AMENDED
<b>General Comments</b>		
<i>7 points made</i>		
1. Water Corporation has no assets in the Park area and does not supply water to any of the communities in this area. The WC should also be kept informed as an Interested Agency of such proposals or as a Decision Making Authority where there are implications for water sewerage and drainage services.	The Water Corporation will be informed as an Interested Agency of any proposed community developments or as a Decision Making Authority where there are implications for water, sewerage and drainage services.	No 2 (b)
2 The Draft Plan gave fair representation to the various recreation, commercial and cultural aspects that the area offers. Concerned at the large area set aside for Wilderness.	No change sought.	No 2 (b)
3 Concerned that membership selection criteria of the three committees be addressed in the Plan.	Considered during Plan preparation.	No 2 (d)
4 CALM's role in the KNP Advisory Committee should be limited to the provision of executive support.	Considered during plan preparation	No 2 (e)
5 Suggests that it is unwise to rely solely on one organisation to nominate Aboriginal members to the KPC, KAHC and KNPAC.	Considered during Plan preparation.	No 2 (e)
6 The Plan's prescriptions should be of value in integrating the traditional aspects of national Park management with the special circumstances relating to the historical and recent rights to mineral exploration and extraction in the Karijini National Park.	Support for Plan.	No 2 (a)
7 Congratulations to the Department for an excellent document. It may now be appropriate for CALM to provide a clear indication of the numbers of tourists the Park could sustain at any one time.	Support for Plan.	No 2 (a)
<b>Introduction 1.1 The Study Area</b>		
1. Inconsistencies regarding the boundaries of the park. For example, the introduction statement "All except 106 ha...is part of a single contiguous area" is contradicted by other parts of the document and particularly the appended maps which show the excision of the infrastructure corridor for Hamersley Iron divides the rest of the Park in two. The maps also show that the Great Northern Highway excision divides the Park and fail to show Hamersley Gorge as a discrete area.	Text and maps amended.	Yes 1(e)
<b>Introduction 1.2 History of Tenure and Management</b>		
<i>1 point made</i>		
1. Paragraph incorrect, Hamersley Gorge is now a contiguous part of Karijini National Park and the area is greater than shown following amendments to the boundary which also include Mt Meharry and O'Briens Block to the south.	Text amended.	Yes 1 (e)
<b>Introduction, 1.3 Conservation Significance-</b>		
<i>3 points made</i>		
1 The Park should be described in comparative terms such as the biogeographical zones identified by the State of the Environment report.	Submission has raised issues beyond the scope of this plan.	No 2 (c)
2. Transport corridors may provide an opportunity in future to complement and enhance access arrangements to the Park, thereby improving public enjoyment of the Park.	Present and potential future access issues have been considered during plan preparation.	No 2 (d)
3 Any expansion of the Park must aim to conserve current conservation values and preferably increase the Park's conservation value.	Expansion is to be balanced with increased protection.	No 2 (d)

SUMMARY OF COMMENT	DISCUSSION / ACTION TAKEN	PLAN AMENDED
<p><b>Introduction 1.5, Recreation and Tourism Significance</b>  <i>2 points made</i>            1 The sensitive development approach to camp grounds within the Park is supported. The submitter wishes to comment on future proposals as they are put forward.</p> <p>2. (page 4, para 2) Needs rewording. The Mt Meharry Conservation Park no longer exists. It is as stated, now part of the national Park.</p>	<p>Support for Plan.</p> <p>Text amended.</p>	<p>No 2 (a)</p> <p>Yes 1 (e)</p>
<p><b>Introduction 1.8, Public Participation</b>  <i>1 point made</i>            The Draft follows Government decision to support Aboriginal and local community involvement through participation on advisory committees.</p>	<p>Support for Plan.</p>	<p>No 2 (a)</p>
<p><b>Introduction 2.2, Karijini Park Council</b>  <i>1 point made</i>            The submitter supports the establishment of a Karijini Park Council as described in the report.</p>	<p>Support for Plan.</p>	<p>No 2 (a)</p>
<p><b>Introduction 2.3 Karijini National Park Advisory Committee</b>  <i>1 point made</i>            The submitter considers it vital to have local government representation on the Karijini Park Advisory Committee.</p>	<p>Local government has always been represented on national park advisory committees.</p>	<p>No 2 (f)</p>
<p><b>Introduction 2.8 Living Areas</b>  <i>1 point made</i>            There is no objection to Aboriginal living areas in the Park. The living areas need to be subject to the same stringent conditions as other residential and development areas within the Park boundaries particularly with respect to domestic animals, introduced flora and environmental standards.</p>	<p>Support for plan.</p>	<p>No 2 (a)</p>
<p><b>Introduction 2.9 Adjoining Lands</b>  <i>1 point made</i>            Refer to joint land management agreement between CALM and Hamersley.</p>	<p>Text amended.</p>	<p>Yes 1 (e)</p>
<p><b>Introduction 3.1 Mineral Exploration and Excisions</b>  <i>1 point made</i>            Any provision which allows the NPNCA, KPC and KNPAC to advise the Minister directly on Park management issues including exploration and mining applications, rationalising of tenements and compensating additions is supported.</p>	<p>Support for Plan.</p>	<p>No 2 (a)</p>
<p><b>A.1.1 Special Purpose Excision</b>  <i>5 points made</i>            1. A map identifying the specific site of the national Park should be included here.</p> <p>2. Paragraph 1. The road is referred to elsewhere as the Nanutarra-Roy Hill road, why not just refer to Munjina roadhouse? There are more facilities available here than in Wittenoom since the Wittenoom store and fuel outlet has closed.</p> <p>3. Excised land should not be referred to as being within the Park, it should not be assumed that any excised area will be available to be managed as part of the national Park as there are likely to be conflicting claims from developers and local government.</p> <p>4. With Wittenoom redundant and a new bitumen road across the Park, the excision at the intersection of the Wittenoom-Roy Hill road and the Gt Northern Highway is now not going to be able to provide the service it was intended.</p> <p>5. Suggest a similar service centre to that at Auski at the intersection of Gt Northern Highway and the new Windell-Marandoo Road.</p>	<p>Considered during plan preparation.</p> <p>Text amended.</p> <p>Excised land was referred to for contextual purposes</p> <p>Beyond scope of plan.</p> <p>Beyond scope of plan.</p>	<p>No 2 (d)</p> <p>Yes 1 (e)</p> <p>No 2 (d)</p> <p>No 2 (c)</p> <p>No 2 (c)</p>
<p><b>A.1.2 Marandoo and Western Corridor</b>  <i>1 point made</i>            1. Explain that the Marandoo and Western Corridor will allow for future additional infrastructure, subject to the EPA approval process.</p>	<p>Beyond scope of plan.</p>	<p>No 2 (c)</p>

SUMMARY OF COMMENT	DISCUSSION / ACTION TAKEN	PLAN AMENDED
<p><b>A.1.3 Eastern Corridor</b>  <i>1 point made</i>            1. Explain that the Eastern Corridor will allow for future additional infrastructure. After "Its purpose is to link with future iron ore mines..." insert, "...to the east of Karijini National Park. These could include Hamersley Iron's Rhodes Ridge, Giles Mini and Yandicoogina deposits, Robe River's West Angelas deposit, and Hancock Resources' Hope Downs deposit. The corridor could also service any mines resulting from rationalisation of tenements, within the Park".</p>	Text amended.	Yes 1 (a)
<p><b>A.1.4 Previous Boundary Recommendations</b>  <i>1 point made</i>            1. Park Boundaries should be realigned to include the Hamersley Gorge as a priority. It is important that it be managed in accordance with policy and guidelines which apply to KNP.</p>	Made points which were already in the Plan.	No 2 (d)
<p><b>A.1.5 Future Boundaries</b>  <i>1 point made</i>            1. The submitter supports the view that future boundaries need to be viewed in a dynamic context and that the KPC and KNPAC be actively involved in the process of identifying areas for addition to the Park.</p>	Support for Plan.	No 2 (a)
<p><b>A.2.2.7 Mineralisation</b>  <i>1 point made</i>            1. "BRF" should be "BIF"</p>	Text amended.	Yes 1 (e)
<p><b>A.2.4.2 Groundwater</b>  <i>3 points made</i>            1. Paragraphs 3 &amp; 5 misleading as they infer that Tom Price's water supply is drawn only from the Fortescue Borefield. No evidence to support claim that one of the causes of the sinkholes is the method of using the aquifer.             2. Any future proposals to exploit groundwater resources existing at locations such as the Turee Creek syncline should only be entered into after an environmental impact study is undertaken with respect to the possible effects on the area's natural and cultural values.             3. Sinkhole formation in the Hamersley region is a natural process, with holes occurring prior to and distant from areas of groundwater abstraction. This issue is outside the ambit of a management Plan for the national Park as the borefield is located well outside the Park boundary. There is no suggestion that any current or possible future impacts would be felt within the Park.</p>	Text amended.  Action sought covered by the strategies of Section B.3.2 Hydrology.  Text amended.	Yes 1 (e)  No 2 (d)  Yes 1 (e)
<p><b>A.2.5 Landscape</b>  <i>1 point made</i>            1. Rewrite the 7th and 8th paragraphs to reflect a clearer balance between positives and negatives of visual landscape management with regard to mining.</p>	Text amended for clarity.	Yes 1 (e)
<p><b>A.2.6 Flora and Vegetation</b>  <i>1 point made</i>            1. Reference made to Dr. M Trudgen's Flora List for Marandoo published in "Marandoo Flora and Fauna", Texasgulf Australia Ltd 1979</p>	Added reference to Dr. Trudgen in reference section.	
<p><b>A.2.6.4 Exotic Plants</b>  <i>1 point made</i>            1. <i>Rumex vesicarius</i> (Ruby dock). The presence of this weed is much wider spread than indicated in the Plan, Yampire Gorge is heavily infested.</p>	Text amended.	Yes 1 (a)
<p><b>A.2.7 Fauna</b>  <i>1 point made</i>            1. Reference to Harry Butler's 1976 Fauna Report on the area omitted although information from that report has been indirectly accessed through the Texas Gulf 1979 report.</p>	Reference has now been made to Butler's 1976 work published in Marandoo Flora and Fauna, Texasgulf Australia Ltd, 1979.	Yes 1 (e)



SUMMARY OF COMMENT	DISCUSSION / ACTION TAKEN	PLAN AMENDED
<p><b>A.2.7.6 Exotic Animals</b>  <i>1 point made</i>            1. CALM should not allow unrestricted entry of domestic pets into the Park. Cats should be banned altogether. Dogs should only be allowed under controlled circumstances.</p>	<p>Considered during plan preparation.</p>	<p>No 2 (d)</p>
<p><b>A.2.8 Fire</b>  <i>1 point made</i>            1. Para 1 Line 1, p 20, substitute “definitely” for “probably”.            Para 2 line 2, p 20, insert “normally” after “will”            Para 4, line 6, p 20, Delete “may be” after “management” and replace with “is”            Para 6, line 2, insert “inappropriate” after “The”            Para 6, line 8, after “burning” insert “at the wrong time of the year leading to large intense fires”            Para 6, final line, insert “frequent” before “fire”.</p>	<p>Text amended for greater clarity.</p>	<p>Yes 1 (e)</p>
<p><b>A.3.1 Traditional Use and Significance</b>  <i>1 point made</i>            1. Resolution of conflict policy no longer applies, tenements dealt with under the Mining Act and State Agreements.</p>	<p>This government policy no longer applies.</p>	<p>No 2 (f)</p>
<p><b>A.3.2 Protection of the Aboriginal Cultural Resource</b>  <i>4 points made</i>            1. The Western Australian Museum no longer has responsibility for protecting Aboriginal sites or administering the Aboriginal Heritage Act 1972-80. These responsibilities now belong to the Aboriginal Affairs Department (AAD)            2. The relationship between the Karijini Aboriginal Heritage Committee (KAHC) and Aboriginal Cultural Materials Committee (ACMC) is still to be negotiated. It is not certain that KAHC will have statutory powers under the Aboriginal Heritage Act. It is suggested CALM seek advice from AAD on this matter.            3. It is imperative that the parties represented on the KPC assist the traditional owners of the Park to authorise and oversee research dealing with Aboriginal cultural heritage conducted within the national Park.            4. An urgent need exists to establish appropriate mechanisms by which the management of KNP can proceed without endangering the cultural heritage of the Aboriginal traditional owners. One of the primary functions of the KAHC should be to act as an advisory committee to KPC and any proposals in relation to the management of the Park, which affects Aboriginal cultural heritage.</p>	<p>Text amended.             Good advice. Considered during plan preparation.             Support for plan.             Support for plan.</p>	<p>Yes 1 (c)             No 2 (d)             No 2 (b)             No 2 (a)</p>
<p><b>A.4 Mining and Exploration</b>  <i>1 point made</i>            1. It is important that multiple land use principles are not abrogated in the effort to protect the natural values of the Park.</p>	<p>Support for Plan.</p>	<p>No 2 (b)</p>
<p><b>A.4.1 History of Resource Exploration</b>  <i>3 points made</i>            1. Delete reference to Cliffs Robe River and replace with Robe River Iron Associates.            2. Future Projects should refer to Hope Downs (Hancock Resources), Area C (BHP), Giles Mini (HI), Yandi (HI) and Rhodes Ridge / Giles Mini (Hamersley Iron)            3. 3rd paragraph, remove references to CRA, Yandicoogina be shortened to Yandi</p>	<p>Text amended.             Text amended.             Text amended.</p>	<p>Yes 1 (e)             Yes 1 (e)             Yes 1 (e)</p>

SUMMARY OF COMMENT	DISCUSSION / ACTION TAKEN	PLAN AMENDED
<p><b>A.4.2 Government Agreement Acts</b>  <i>4 points made</i></p> <p>1. No reference to administrator of Agreement Acts. Reference to Department of Development should be added.</p> <p>2. Reference should be made that Hamersley Iron have applied for further tenements within the national Park.</p> <p>3. Needs updating. This draft was released in 1996 yet refers to a future event to occur in October 1995.</p> <p>4. Section correctly points out that the leases remaining in the Iron Ore (Wittenoom) Agreement Act 1972 are held by Hancock Resources - this should be reflected in Table 1 of iron ore tenements.</p>	<p>Text amended.</p> <p>Text amended.</p> <p>Text amended.</p> <p>Text amended.</p>	<p>Yes 1 (e)</p> <p>Yes 1 (e)</p> <p>Yes 1 (e)</p> <p>Yes 1 (e)</p>
<p><b>A.4.5 Other Relevant Legislation, Policies and Processes</b>  <i>1 point made</i></p> <p>1. Table 1 needs information updated.</p>	<p>Text amended with data as supplied.</p>	<p>Yes 1 (e)</p>
<p><b>A.5.1 Management Zones</b>  <i>1 point made</i></p> <p>1. Support for zoning system by local authority.</p>	<p>Text amended.</p>	<p>No 2 (a)</p>
<p><b>A.5.1.2 Implementation of Zoning</b>  <i>4 points made</i></p> <p>1. Wilderness.  The lack of access combined with the size and ruggedness of the country should provide adequate protection for the foreseeable future. It is wished to foreshadow the introduction of a permit system I recommend a reword along the following lines: "A permit system for pedestrian access may be considered in the future if excessive pressures adversely impact on the wilderness values.</p> <p>2. Park Services  Whilst this zone is defined here, no such zones are shown in the Plan. The provision of Park services has the potential to result in the development of a "service village" whether this be inside or outside the Park. See also my comments under P52, Park Facilities. Last P 25, reword. Meharry and O'Briens are now part of the Park.</p> <p>3. Disagree with the zoning of a large portion of the Park as wilderness. the area has been subjected to a large amount of human activity in the past, and therefore conflicts with the definition given in this draft. Propose that the areas marked for Wilderness zoning be changed to Natural Environment areas instead. This would allow for all types of recreation to continue but in a regulated manner.</p> <p>4. None of the Park qualifies as a wilderness area. Recommend improved education of the public regarding conservation and controlled access to delicate areas on a seasonal basis. A "Natural Environment" classification would be more appropriate.</p>	<p>Text amended.</p> <p>Text amended.</p> <p>Considered during preparation of the Plan. Ideas on wilderness throughout Australia are being reviewed. In the mean time will retain a wilderness zone in Karijini National Park.</p> <p>The areas zoned wilderness do qualify according to the definition given. The Natural Environment alternative was given careful consideration and may be recommended for wilderness areas at a later revision of the Plan.</p>	<p>Yes 1 (d)</p> <p>Yes 1 (e)</p> <p>No 2 (d)</p> <p>No 2 (d)</p>
<p><b>A.5.2.2 Road Access</b>  <i>1 point made</i></p> <p>1. paragraph 3. This road is currently under construction. paragraph 6. Wittenoom-Roy Hill road inconsistent with paragraph 2 of this page. The reference to 30 crossings is inconsistent with paragraph 3 p 27</p>	<p>Text amended.</p>	<p>Yes 1 (e)</p>
<p><b>A.5.2.3 Pedestrian Access</b>  <i>1 point made</i></p> <p>1. It is incorrect to say that access to the gorges is difficult when there is disabled access to at least one lookout (Circular Pool) and others are also easily accessed. Access into gorges is more restricted.</p>	<p>Text amended.</p>	<p>Yes 1 (e)</p>
<p><b>A.5.4 Public Health and Airborne Crocidolite</b>  <i>1 point made</i></p> <p>1. The reference to 30 crossings is inconsistent with paragraph 3, page 27.</p>	<p>Text amended.</p>	<p>Yes 1 (e)</p>

SUMMARY OF COMMENT	DISCUSSION / ACTION TAKEN	PLAN AMENDED
<p><b>A.5.5.1 Camping</b> 2 points made</p> <p>1. Camping facilities are not provided at the Yampire Gorge or Circular Pool. There are only three designated camp grounds with facilities, Joffre, Weano and Fortescue.</p> <p>2. No mention of the Joffre campsite has been made in this area of the Plan.</p>	<p>Text amended to reflect current position of two designated campgrounds - Fortescue and Savannah.</p> <p>The Joffre camp facilities are referred to.</p>	<p>Yes 1 (e)</p> <p>No 2 (d)</p>
<p><b>A.5.5.2 Campfires</b> 2 points made</p> <p>1. Delete the first sentence of the last para in this section. Firstly, if this is to be proposed, it should be stated in Section B, not under "Background and Resources". Secondly, it is confusing as it is not consistent with the current policy being described. Fire rings are <i>not</i> currently provided.</p>	<p>Text amended.</p>	<p>Yes 1 (e)</p>
<p><b>A.5.6 Visitor Facilities</b> 2 points made</p> <p>1. The submitter is anxious to develop an economic environment which promotes tourism development in the towns of Tom Price and Paraburdoo. The towns are seen as appropriate areas from which tourists can travel daily into the Park.</p> <p>2. With an expected visitation increase due to new road construction to Karijini National Park, the submitter supports commercial development within the Shire to the east of the Park</p>	<p>The submitter raised issues which are beyond the scope of the Plan.</p> <p>The submitter raised issues which are beyond the scope of the Plan.</p>	<p>No 2 (c)</p> <p>No 2 (c)</p>
<p><b>A.5.7 Commercial Tourist Operations</b> 3 points made</p> <p>1. Opportunities exist to develop appropriate tourism operations, taking into account the Park's diverse and fascinating natural and cultural environments.</p> <p>2. Interpretation of the Park from the Aboriginal traditional owners' perspective must take place in a manner directed by the traditional owners.</p> <p>3. Submitter does not support the establishment of permanent accommodation facilities in the Park.</p>	<p>Support for Plan.</p> <p>Support for Plan.</p> <p>Plan option still considered the best option.</p>	<p>No 2 (a)</p> <p>No 2 (a)</p> <p>No 2 (a)</p>
<p><b>A.5.8 Information, Interpretation and Education</b> 1 point made</p> <p>1. The submitter supports the types of methods suggested which may be employed in the interpretive program.</p>	<p>Support for Plan.</p>	<p>No 2 (a)</p>
<p><b>A.5.9.1 Visitor Safety</b> 1 point made</p> <p>1. p30. There is no longer an airstrip at Marandoo, the strip has been rehabilitated to bush.</p>	<p>Text amended.</p>	<p>Yes 1 (e)</p>
<p><b>A.6 Living Areas for Aboriginal Traditional Owners</b> 1 point made</p> <p>1. Permanent accommodation, either for tourist purposes, the aboriginal community, or for any other purpose being established in the Park is not supported by this submission. There are alternatives to the provision of living areas on traditional land which will enable the Karijini Aboriginal Corporation members to effectively carry out their role in management of the Karijini National Park.</p>	<p>The Plan option is still considered to be the best option.</p>	<p>No 2 (e)</p>
<p><b>A.6.3 Community Services</b> 1 point made</p> <p>1. The requirement for services to any proposed residential lease areas are no different from those of other residents of the Park. The provision of such services, in keeping with the values of the Park, would be an unlikely achievement.</p>	<p>The Plan option still considered to be the best option.</p>	<p>No 2 (e)</p>

SUMMARY OF COMMENT	DISCUSSION / ACTION TAKEN	PLAN AMENDED
<p><b>B.1 Park Management</b> 6 points made</p> <p>1. There is some repetition within Section 2.0 which could be avoided.</p> <p>2. Model of management proposed in 1995 is totally rejected and the Karijini Aboriginal Corporation calls on CALM to return to the principles and model agreed in the 1993 Plan.</p> <p>3. CALM should enter into immediate discussions with the Karijini Aboriginal Corporation concerning the changes to the Draft Management Plan.</p> <p>4. As part of those discussions CALM should make resources available to the Karijini Aboriginal Corporation to carry out wide-ranging consultations with Aboriginal people who have a traditional interest in the Park.</p> <p>5. Those discussions should include, as a major consideration, proposals for the protection of native title rights and interests in the Park.</p> <p>6. Without prejudice to the native title claim now lodged over the Park, Karijini Aboriginal Corporation invites CALM to negotiate a settlement of its claim without the necessity to embark on costly and time-consuming court action.</p>	<p>Section B.1 expands upon points introduced in Section 2.0</p> <p>Not possible due to existing legislation and Government policy.</p> <p>Discussions have been held.</p> <p>Resources required for wide-ranging consultation is beyond the scope of resources available to CALM.</p> <p>Discussions have been held.</p> <p>Discussions have been held.</p>	<p>No 2 (d)</p> <p>No 2 (f)</p> <p>No 2 (d)</p> <p>No 2 (c)</p> <p>No 2 (c)</p> <p>No 2 (d)</p>
<p><b>B.1.1 Karijini Park Council</b> 1 point made</p>	<p>Support for Plan.</p>	<p>No 2 (a)</p>
<p><b>B.1.2 Karijini Aboriginal Heritage Committee</b> 1 point made</p>	<p>Support for Plan.</p>	<p>No 2 (a)</p>
<p><b>B.1.3 Karijini National Park Advisory Committee</b> 1 point made</p> <p>1. Specified requirements for Aboriginal representation on the Advisory Committee, would over state the interests of Aboriginal communities at the expense of other interested parties. It is noted that the Aboriginal community will be well represented on the KPC and the KAHC.</p>	<p>Plan option still considered to be the best option.</p>	<p>No 2 (e)</p>
<p><b>B.1.4 Environment Assessment</b> 1 point made</p> <p>1. The submitter supports the objective and strategies 1, 2 and 3, however, does not support the siting of permanent commercial accommodation within the boundaries of the Park. Commercial accommodation should be promoted in the townships of Tom Price and Paraburdoo and to the east of the Park outside its boundaries.</p>	<p>Plan option still considered to be the best option.</p>	<p>No 2 (e)</p>
<p><b>B.2.1 Park Boundaries and Tenure</b> 1 point made</p>	<p>Support for Plan.</p>	<p>No 2 (a)</p>
<p><b>B.2.2 Living Area Leases</b> 3 points made</p> <p>1. The full meanings of acronyms should be provided (eg. KAC). A definition section could be provided.</p> <p>2. Stronger reference should be made under Strategy 1 to suitable conditions which secure Park values as well as Aboriginal aspirations. It should be clearly stated that Living Areas within the Park do not necessarily imply normal freehold rights, "The leases will include suitable terms and conditions which will seek to meet the aspirations of the aboriginal people whilst maintaining the values in the surrounding Park".</p> <p>3. The submission does not support providing Aboriginal traditional owners with living areas within the Park or strategies which support that objective, it does not support the establishment of permanent accommodation within the Park's boundaries.</p>	<p>Text amended.</p> <p>Text amended.</p> <p>Plan option still considered to be the best option.</p>	<p>Yes 1 (e)</p> <p>Yes 1 (d)</p> <p>No 2 (e)</p>

SUMMARY OF COMMENT	DISCUSSION / ACTION TAKEN	PLAN AMENDED
<p><b>B.3.1 Soils and Landform</b>  <i>1 point made</i>            1. The objectives and the proposed strategies are supported.</p>	Support for Plan.	No 2 (a)
<p><b>B.3.2 Hydrology</b>  <i>4 points made</i>            1. Strategy 7 being achieved.             2. Strategy 8, monitoring the impacts of abstraction is a proponent responsibility.             3. Management of hydrology should address all groundwater users including unlicensed.             4. The objectives and the proposed strategies are supported.</p>	<p>Support for Plan.             Support for Plan.             Support for Plan.             Text amended.             Support for Plan.</p>	<p>No 2 (a)             No 2 (a)             Yes 1 (d)             No 2 (a)</p>
<p><b>B.3.3 Landscape</b>  <i>1 point made</i>            1. The objectives and proposed strategies are supported with the addition, in respect of No. 4, that appropriate input should be sought from the Karijini Park Council and the Karijini National Park Advisory Committee.</p>	Support for Plan.	No 2 (a)
<p><b>B.3.4 Flora and Vegetation</b>  <i>1 point made</i>            1. The objectives and proposed strategies in respect of native flora and those with respect to threats to major Plant communities are supported, however, a program should also be implemented to systematically eradicate or prevent access to major Plant communities by feral animals. The proposed strategies with respect to rare and restricted Plants and weeds are supported.</p>	Support for Plan.	No 2 (a)
<p><b>B.3.4.1 Native Flora</b>  <i>1 point made</i>            1. Strategy 6 is not relevant to the objectives. The objectives that are stated do not require the establishment of a Park herbarium. Establishment of a Park herbarium would be an unnecessary duplication of resources provided in Karratha and Perth. Any collections done should be for the Regional Herbarium.</p>	Text amended.	Yes 1 (d)
<p><b>B.3.4.4 Weeds</b>  <i>3 points made</i>            1. P38. Strategy 12. This is far too specific and restrictive. Reword to say “kill” rather than “mechanically remove” date palms “in” rather than “from” the Park. Alternatively delete completely as this is covered in the broader Strategies 1 and 2.             2. This section needs to indicate what action, if any, will be taken on the weeds mentioned in Section A.2.6.4. Information on the current level of control of these weeds should be given and an indication of whether this level of activity will change. Without this information it is not possible to determine whether appropriate management is going to occur in the Park.             3. Date Palms. Section should be changed. No justification is given as to why the Palm trees must be mechanically removed. As no justification is given for this expensive exercise, the juvenile and female palms should be killed with the most efficient and environmentally friendly method with only the male palms surviving until they die naturally.</p>	<p>Text amended.             It is beyond the scope of a management plan to prescribe set courses of management action, the role of the management plan is to outline goals and strategies for reaching them.             It is beyond the scope of a management plan to prescribe set courses of management action, the role of the management plan is to outline goals and strategies for reaching them.</p>	<p>Yes 1 (e)             No 2 (c)             Yes 1 (c)</p>
<p><b>B.3.5.1 Native Fauna</b>  <i>1 point made</i>            1. The objectives and the proposed strategies in respect of native fauna, common species and habitats and rare fauna are supported with the addition of a further strategy in respect of rare fauna, being to review the potential to reintroduce gazetted rare species into the Park. No strategies have been identified to arrest the decline of gazetted rare species or to increase their numbers within the Park. The proposed strategies in respect to critical weight range mammals, dingos and exotic animals are also supported.</p>	The suggestion of an additional strategy to “review the potential to reintroduce gazetted rare species into the Park” is welcomed and supported.	Yes 1 (d)

SUMMARY OF COMMENT	DISCUSSION / ACTION TAKEN	PLAN AMENDED
<p><b>B.3.5.4 Critical Weight Range Mammals</b>  <i>1 point made</i>            1. Delete the word “all” from Strategy 6. “All” cat and fox sightings are not reported to CALM.</p>	Text amended.	Yes 1 (e)
<p><b>B.3.5.5 Dingos</b>  <i>1 point made</i>            1. The Draft management Plan acknowledges that dingoes from the Park disperse and attack stock on adjacent pastoral leases. Agriculture WA recognise and appreciate CALM’s desire to maintain a viable population of dingoes within the Park however CALM must also ensure that it’s activities do not have a detrimental effect on its neighbours.</p>	Support for Plan.	No 2 (a)
<p><b>B.3.6 Fire</b>  <i>3 points made</i>            1. Strategies need clarification and greater explanation. It indicates in Strategy (v) and (vi) that the prescriptions for buffer, mosaic and aerial burns will be included in the “Fire Operations Plan”. This is not required as these prescriptions should only be done in the year that the burn is planned.             2. The objectives and the proposed strategies are supported.             3. Objective 6: Modify to read: Fire suppression activities applied in an inappropriate means may cause environmental damage.            Objective 7: delete            Strategy 1:            i. delete “existing” substitute “community”            iv. insert “Fuel Reduced” after suitable            v. delete “and”            vi. delete “following” substitute “based on”            vii. commence with “where they are known”            x. after “operations” add “to meet environmental and fire suppression objectives”            Strategy 7:            final line, insert “community values and” after “damaging”.</p>	<p>Considered during Plan preparation.</p> <p>Support for Plan.</p> <p>Text amended.</p>	<p>No 2 (d)</p> <p>No 2 (a)</p> <p>Yes 1 (e)</p>
<p><b>B.4.1 Karijini Aboriginal Heritage Committee</b>  <i>1 point made</i>            1. The objectives and the proposed strategies are supported.</p>	Support for Plan.	No 2 (a)
<p><b>B.4.2 Traditional Aboriginal Activities</b>  <i>2 points made</i>            1. It is my understanding that hunting (and possibly gathering) is not a permissible activity in National Parks, notwithstanding this is permitted under the Wildlife Conservation Act as it would be incompatible with the conservation purpose of reservation of the land. If this is the case, and it is proposed to permit hunting and gathering in the Park, the need for change to the legislation should be stated. I support the proposition that limited and controlled hunting and gathering be permitted.             2. The objectives and the proposed strategies are supported, except Strategy 2v “use of firearms or hunting in the Park”. The proposed requirements for registration with CALM’s Regional Manager and supervision of the proposed strict safety procedures is impractical given that the Regional Manager is 300 km from the Park.</p>	<p>Highlights a conflict between the CALM Act and Wildlife Conservation Act regarding the allowing of hunting and gathering by Aboriginal people for personal consumption in National Parks in the latter and a general ban in the former. The Wildlife Conservation Act takes precedence in this matter.</p> <p>Firearm use within Park restricted to CALM management and limited use by Aboriginal people in traditional activities. General policy on prohibition of firearms in national parks remains intact.</p>	<p>No 2 (d) 2 (c)</p> <p>No 2 (d)</p>
<p><b>B.4.3 Colonial Heritage</b>  <i>1 point made</i>            1. The objective and the proposed strategies are supported.</p>	Support for Plan.	No 2 (a)
<p><b>B.5.1 Mining</b>  <i>3 points made</i>            1. In some sections of the document, particularly Section B.5, the term Karijini Advisory Committee is used - this should read “Karijini National Park Advisory Committee”.             2. First point should recognise change in government policy for tenure to be managed according to the Mining Act and that any review and rationalisation is on an informal and voluntary basis.             3. The objectives and the proposed strategies are supported.</p>	<p>Text amended.</p> <p>Text amended.</p> <p>Support for Plan.</p>	<p>Yes 1 (c)</p> <p>Yes 1 (e)</p> <p>No 2 (a)</p>

SUMMARY OF COMMENT	DISCUSSION / ACTION TAKEN	PLAN AMENDED
<p><b>B.5.2 Exploration</b> 2 points made</p> <p>1. Last sentence in Point 2 should be changed to "...and case by case basis giving consideration to the impacts of exploration on conservation values".</p> <p>2. The objectives and the proposed strategies are supported.</p>	<p>Text amended.</p> <p>Support for Plan.</p>	<p>Yes 1 (e)</p> <p>No 2 (a)</p>
<p><b>B.5.3 Compensating Additions</b> 1 point made</p> <p>1. The objectives and the proposed strategies are supported.</p>	<p>Support for Plan.</p>	<p>No 2 (a)</p>
<p><b>B.5.4 Basic Raw Materials</b> 1 point made</p> <p>1. The objectives and the proposed strategies are supported.</p>	<p>Support for Plan.</p>	<p>No 2 (a)</p>
<p><b>B.5.5 Fossicking</b> 1 point made</p> <p>1. The objectives and the proposed strategies are supported.</p>	<p>Support for Plan.</p>	<p>No 2 (a)</p>
<p><b>B.6.1 Infrastructure</b> 1 point made</p> <p>1. The objectives and the proposed strategies are supported.</p>	<p>Support for Plan.</p>	<p>No 2 (a)</p>
<p><b>B.6.2 Access to Marandoo</b> 2 points made</p> <p>1. There is no justification for the second point: "Air Traffic across the Park may increase with the development of Marandoo". The airstrip is closed and there is no helipad, an apology to Hamersley Iron may be appropriate in the final Plan.</p> <p>2. The objectives and the proposed strategies are supported.</p>	<p>Text amended.</p> <p>Support for Plan.</p>	<p>Yes 1 (e)</p> <p>No 2 (a)</p>
<p><b>B.6.3 Environmental Assessment and Monitoring</b> 2 points made.</p> <p>1. The objectives and the proposed strategies are supported.</p> <p>2. It seems appropriate to continue Hamersley's liaison through the Statement of Mutual Understanding with CALM as this a) relates principally to day to day management and b) to areas excised from the Park: development of a direct Hamersley - Karijini Park Council link to discuss the SMU would be unnecessary duplication of this arrangement.</p>	<p>Support for Plan.</p> <p>Text amended.</p>	<p>No 2 (a)</p> <p>Yes 1 (b)</p>
<p><b>B.6.4 Rehabilitation</b> 2 points made</p> <p>1. The objectives and the proposed strategies are supported.</p> <p>2. Reference to decommissioning of Marandoo resulting in a depression of about 20% of the volume of material mined is erroneous, there is no approved decommissioning plan for Marandoo - the Plan will be agreed as per the Ministerial condition "at least 6 months prior to decommissioning" to allow for the incorporation of best practice at that date. As a point of clarification, the waste/ore ratio of around 1:1 would not allow sufficient material to return to the pit to meet this 20% criterion.</p>	<p>Support for Plan.</p> <p>Text amended.</p>	<p>No 2 (a)</p> <p>Yes 1 (e)</p>
<p><b>B.7.1 Management Zones</b> 1 point made</p> <p>1. The objectives and the proposed strategies are supported.</p>	<p>Support for Plan.</p>	<p>No 2 (a)</p>
<p><b>B.7.2 Access</b> 2 points made</p> <p>1. The objectives and the proposed strategies in respect of road, pedestrian and air access are supported with the addition that air space for the operation of tourism aircraft should be limited, together with the number and duration of flights over the Park area.</p> <p>2. Information to indicate the degree of difficulty of walking tracks should also be made available prior to arrival at the tracks, preferably in brochure form from a central information area or surrounding tourist bureaux.</p>	<p>Support for Plan.</p> <p>Support for Plan.</p>	<p>No 2 (a)</p> <p>No 2 (a)</p>

SUMMARY OF COMMENT	DISCUSSION / ACTION TAKEN	PLAN AMENDED
<p><b>B.7.2.1. Road Access</b>  <i>8 points made</i></p> <p>1. Driving off established roads and tracks should be discouraged.</p> <p>2. We would like to see access maintained to already established tracks and roads that exist in the Park. The upgrading of these tracks and roads and the proposed intention to progressively seal roads along existing alignments in the recreational zones will lead to an increase in use of the Park by visitors who may not have the best interests of the Park in mind. If the tracks and roads were left as they are then there would be a tendency for visitors to enter the Parks to enjoy it as it should be not because it has become accessible to all types of vehicles.</p> <p>3. The establishment of staffed entry stations and the introduction of speed limits on certain roads is a step in the right direction. Any speed limits should be clearly signposted.</p> <p>4. The maps in the draft require more detail especially where tracks and camp sites are concerned. It has been difficult to comment on tracks and matters relevant due to the vagueness of the maps and lack of information regarding roads and tracks.</p> <p>5. The existing road to Knox Gorge should be terminated at Joffre Falls car park and pedestrian access to Knox and Red Gorge lookouts be provided.</p> <p>6. As this is the only access to the Park from the north, it must remain open. In addition to the extra travelling incurred by its closure, the drive is an extremely pleasurable and scenic one which should not be lost. MRD document describes construction of a sealed road from proposed Marandoo - Gt Northern Hwy road to the Nanutarra - Munjina road at a cost of \$14 million by 2004. Recommend that it remain as a 4WD access only whilst using a portion of the MRD funds to upgrade the road through the wetlands and eliminate any health risks.</p> <p>7. Strategy 6 conflicts with the third objective in this Section as well as Section B.9.3. Yampire Gorge entry should be closed as soon as the Windell to Yampire Gorge section of road is completed and open. To leave and maintain an access to the southern end of Yampire is encouraging visitors to enter this area and to potentially go further and enter and explore the gorges at Yampire. This is unacceptable and opens the Department and Government to future liability. There is no need for the road north of Joffre Falls Dales intersection and the closure of this section of Yampire would further emphasise the Government's commitment to minimising the public's exposure to asbestos.</p> <p>8. The unformed track to the summit of Mt Meharry should remain as a 4WD access only. The upgrading of tracks to walk trails only will exclude those who are infirm, disabled and families with young children. Recommend that the walk trails formed should be separate to the current 4WD track so that 4WDs are not excluded.</p>	<p>6.</p> <p>Support for Plan</p> <p>Support for Plan.</p> <p>Support for Plan and considered during plan preparation</p> <p>Scale is not appropriate for all detail to be included.</p> <p>This is already part of the Master Development Plan.</p> <p>Considered during plan preparation.</p> <p>Considered during plan preparation.</p> <p>Considered during plan preparation.</p> <p>A separate walk trail already exists. Existing 4WD trail to top of Mt Meharry should remain provided there is no additional damage.</p>	<p>No 2 (a)</p> <p>No 2 (a)</p> <p>No 2 (a); 2 (d)</p> <p>No 2 (d)</p> <p>No 2 (d)</p> <p>No 2 (d)</p> <p>No 2 (d)</p> <p>No 2 (d)</p> <p>No 2 (d)</p>
<p><b>B.7.2.2 Air Access</b>  <i>3 points made</i></p> <p>1. Air access by tourist operators should be restricted both in terms of air space and operational times and frequency. Enjoyment of the Park may be compromised if aircraft activities are allowed to operate in the skies over the Park in an unrestricted manner.</p> <p>2. I would be very surprised if the only landing strip currently operational would be suitable for emergency evacuations, especially at night. The objectives and strategies with regard to this need greater thought.</p> <p>3. The objectives and proposed strategies are supported, air space for the operation of tourism aircraft should be limited, together with the number and duration of flights over the Park area.</p>	<p>Text amended.</p> <p>Text amended.</p> <p>Support for plan and considers issues already considered during plan preparation.</p>	<p>Yes 1 (d)</p> <p>Yes 1 (e)</p> <p>No 2 (d)</p>



SUMMARY OF COMMENT	DISCUSSION / ACTION TAKEN	PLAN AMENDED
<p><b>B.7.2.3. Pedestrian Access to Popular Features</b>  <i>1 point made</i>            1. This title is confusing as Bushwalking (B.7.3.4) is also pedestrian access. Fourth dot point is too specific and exclusive of other areas. For example, some of the best walking country in Karijini between Hamersley and Weano gorges and along the Mt Vigors Range is not included. I recommend that this be reworded to say: "Further trails may be developed, <i>including at...</i>"            Strategy 1 should also be reworded. If walk tracks are to provide a <i>minimum risk</i> they will be located well away from the main visitor attractions (the gorges). Suggest: "Provide walk tracks to reduce the risk to Park visitors and protect Park values".</p>	Text amended.	Yes 1 (e)
<p><b>B.7.3 Recreation</b>  <i>1 point made</i>            1. The objectives and the proposed strategies are supported.</p>	Support for Plan.	No 2 (a)
<p><b>B.7.3.2 Camping</b>  <i>5 points made</i>            1. The recent expressions of interest for developing accommodation in the park included the provision of camp grounds. To clarify this, add Strategy 3: "Investigate commercial development / management of camp grounds".            2. Pleased to see that camping will be allowed at areas other than main areas. Upgrading existing camp sites closer to the major attractions is fine but would like to see areas set aside for smaller vehicle based groups of around 6 to 8 vehicles at more remote areas in the Park. It is necessary to have the vehicle close to the tent as they are relied upon for supplies, lighting etc.            3. The sites set up singularly are currently not viable: they do not cater for tourists travelling in groups of two or three vehicles; the campsites do not cater for tourists with roof top tents or live in vehicles. There are no sites designated for these vehicles, the levelling of sites is inadequate for these vehicles, currently, a site could be lost during a day trip for such vehicles.            4. In accordance with the statements made in this paragraph, we recommend it remain as a group campsite and not closed in the future.            5. Any proposal to relocate or upgrade camping facilities in the recreation zone should be referred to the Karijini Park Council and Karijini National Park Advisory Committee, for input.</p>	<p>Text amended.</p> <p>Considered during plan preparation.</p> <p>Text amended.</p> <p>Considered during plan preparation.</p> <p>Considered during plan preparation.</p>	<p>Yes 1 (e)</p> <p>No 2 (d)</p> <p>Yes 1 (d)</p> <p>No 2 (d)</p> <p>No 2 (d)</p>

SUMMARY OF COMMENT	DISCUSSION / ACTION TAKEN	PLAN AMENDED
<p><b>B.7.3.3 Campfires</b>  <i>5 points made</i></p> <p>1. Fires in the recreation zones in the northern portion of the Park should only be permitted in designated fireplaces where: There is a resident caretaker/manager at the camp ground and where wood is supplied.</p> <p>2. We understand that the ever increasing risk of fires started by an uncontrolled or unattended camp fire is a problem in national Parks. This Draft appears to have a fair reflection on responsible use of camp fires in the national Park.</p> <p>3. Endorses the Campfire Policy as a camp fire is an essential part of camping, particularly when in a group. Would like to alter the current policy where no fires are allowed, in certain areas at certain times of the year as we consider that this is not a user friendly policy. A publicity plan to discourage irresponsible users should be enforced and encourage campers to supply their own wood from well outside the Park.</p> <p>4. Delete: The second objective and strategies One and Two. Reasons are same as for comments on A.5.5.2.  Change Strategy 3 to: Campfires are not permitted north of the Mt Bruce-Windell bitumen road. Campfires south of the road will be allowed at the discretion of the Ranger In Charge.</p> <p>5. The proposed strategies are supported.</p> <p>6. I am opposed to the provision of campfires at major recreation sites as 1. Provision of firewood from the area will have a significant effect on the environment; 2. If CALM staff are involved, their time would be better spent elsewhere; 3. Trucking in firewood from other areas will result in the introduction of weeds and feral animals, as well as the unauthorised translocation of native animals and plants.</p>	<p>Text amended.</p> <p>Support for Plan.</p> <p>Plan option is still considered to be the best option.</p> <p>Text amended.  Also, Mt Bruce-Windell Road is now called Karijini Drive.</p> <p>Support for Plan.</p> <p>Text amended.</p>	<p>Yes 1 (d)</p> <p>No 2 (a)</p> <p>No 2 (e)</p> <p>Yes 1 (e)</p> <p>No 2 (a)</p> <p>Yes 1 (e)</p>
<p><b>B.7.3.4 Bushwalking</b>  <i>1 point made</i></p> <p>1. This submission supports the proposed strategies but would add in Strategy No. 2 part 4, which would provide for the guidelines to include advise as to "what to do in an emergency".</p>	<p>Text amended.</p>	<p>Yes 1 (b)</p>
<p><b>B.7.3.5 Adventure Sports</b>  <i>1 point made</i></p> <p>1. The proposed strategies are supported.</p>	<p>Support for Plan.</p>	<p>No 2 (a)</p>
<p><b>B.7.3.6 Commercial Visitor Accommodation</b>  <i>4 points made</i></p> <p>1. "Any commercial visitor accommodation must enhance visitor appreciation of the natural environment of the Park". The development of standard motels which shut residents off from the surrounding environment or the creation of urban 'tourist villages' is not appropriate.</p> <p>2. "Any proposal for commercial visitor accommodation must clearly identify any service requirements including staff accommodation and facilities. The development of visitor accommodation into a service village should not be permitted. Any service centre required to support the needs of residents in the Park should be provided separately.</p> <p>3. Provision of water and waste water services to commercial accommodation facilities is not addressed. If the facilities are large, the environmental impact could be adverse.</p> <p>4. The submitter does not support the establishment of permanent accommodation for auxiliary services (eg camping services) in the Park and believes Park activities should complement services and facilities existing or potentially existing in the nearby towns of Tom Price and Paraburdoo or to the east of the Park. The submitter is concerned to see that the pristine environments within the Park are preserves as far as possible.</p>	<p>Text amended.</p> <p>Text amended.</p> <p>Will be considered during evaluation of any proposals.</p> <p>These points had been considered during plan preparation.</p>	<p>Yes 1 (e)</p> <p>Yes 1 (e)</p> <p>No 2 (d)</p> <p>No 2 (d)</p>

SUMMARY OF COMMENT	DISCUSSION / ACTION TAKEN	PLAN AMENDED
<p><b>B.7.4 Pets</b> 3 points made</p> <p>1. It appears to be inconsistent to have one rule for residents and another for visitors. Residents should not be permitted pets unless in a zone where visitors can also bring pets. Because of the remoteness of the Park, consideration should be given to the establishment of an area within the Park where travellers can leave pets, either under supervision of a member of their party or on a commercial basis.</p> <p>2. Permits for dogs should not be required in strategy 1: guide dogs; SAR dogs. This should be changed to indicate no permit is necessary. If approval for these dogs is required in the Park, the approval should be able to be given by the RIC.</p> <p>3. The objectives and proposed strategies are supported.</p>	<p>Considered during Plan preparation.</p> <p>Text amended.</p> <p>Support for Plan.</p>	<p>No 2 (d)</p> <p>Yes 1 (d)</p> <p>No 2 (a)</p>
<p><b>B.7.6 Information, Education and Interpretation</b> 1 point made</p> <p>1. The objectives and the proposed strategies are supported and in particular a Visitor's Centre which incorporates commercial activity under the one roof.</p>	<p>Support for Plan.</p>	<p>No 2 (a)</p>
<p><b>B.7.7 Regulation and Monitoring</b> 1 point made</p> <p>1. The objectives and the proposed strategies are supported.</p>	<p>Support for Plan.</p>	<p>No 2 (a)</p>
<p><b>B.8.1 Housing</b> 1 point made</p> <p>1. If rubbish is not removed from the Park, it should be disposed of in accordance with the relevant government rules and not in a "carefully controlled manner".</p>	<p>Text amended.</p>	<p>Yes 1 (d)</p>
<p><b>B.8.2 Services</b> 2 points made</p> <p>1. To provide 'adequate' health, education and communication facilities for residents is likely to result in the development of a service centre or service village. I would suggest the strategies be replaced by:</p> <p>1: Secure storage for emergency medical supplies and an RFDS radio service will be maintained.</p> <p>2. The provision of community facilities within the Park will be restricted to essential services including emergency health/medical services.</p> <p>3. The Karijini Park Council will recommend a policy and suitable locations for the establishment of a 'service centre' where service staff can be accommodated and to support the provision of medical and education services for Park visitors and residents.</p> <p>4. All major construction or building proposals will be subject to an internal environmental assessment (Section B.1.4)</p>	<p>Text amended.</p>	<p>Yes 1 (d)</p>
<p>2. There is no indication of the type of Airstrip considered appropriate. I suggest the minimum standard should be a strip suitable to the RFDS operations for daylight only.</p>	<p>This issue covered in Section B.7.2.2 Air Access</p>	<p>No 2 (d)</p>
<p><b>B.9 Safety</b> 3 points made</p> <p>1. The submitter supports the objectives and the proposed strategies for proposed visitor and residents safety, occupational health and welfare and with respect to public health. In particular, the submitter supports proposals to upgrade or close the Yampire Gorge Access Road, in accordance with any Government directive to fulfil its duty of care to visitors, staff and residents, upon full investigation of the potential health risks.</p> <p>The submitter supports preparation of a management plan to deal with the Park's asbestos problem, in consultation with the Department of Occupational Health, Safety and Welfare, and the Department of Minerals and Energy.</p> <p>Unstable cliff edges, falling rocks, throwing of stones, diving into unknown depths of water and the hazards of wet rocks need to be included in visitor awareness.</p>	<p>Support for Plan.</p> <p>Support for Plan.</p> <p>Support for Plan.</p>	<p>No 2 (a)</p> <p>No 2 (a)</p> <p>No 2 (a)</p>

SUMMARY OF COMMENT	DISCUSSION / ACTION TAKEN	PLAN AMENDED
<p><b>B.9.1 Visitor and Resident Safety</b>  <i>1 point made</i>            1. Strategy 8. Change the word 'possible' to appropriate. Otherwise the Park would covered in shade shelters.</p>	Text amended.	Yes 1 (e)
<p><b>B.10 Park Administration</b>  <i>1 point made</i>            1. The submitter supports the objectives and the proposed strategies with respect to staff training, location of Ranger's station, communication links and Park headquarters.</p>	Support for Plan.	No 2 (a)
<p><b>B.10.1 Staffing</b>  <i>2 points made</i>            1. There are currently 4 persons (not all Rangers) permanently employed at the Park (and at various times up to another 12 persons for shorter periods. The last sentence should be deleted. A minimum of 3 persons may be needed to operate the Crux rescue gear but is not possible to maintain 3 persons in the Park at all times with current staffing levels. Whilst Park staff provide initial assistance, "Lead Combat Agency" responsibility for Search and Rescue lies with the SES, not CALM.             2. Objective 2. Currently four rangers are not employed at the Park. Change rangers to people and the statement would be correct. A minimum of three people are not required at a rescue operation. Rescue operations are the responsibility of WA Police and not CALM, and the Police may indicate they require more or less CALM staff, if any. CALM should only assist if required.</p>	Text amended.  Text amended.	Yes 1 (e)  Yes 1 (e)
<p><b>B.10.2 Staff Training</b>  <i>1 point made</i>            1. Duty Rangers should be educated to be more approachable, seen around more and able to provide advice and knowledge to the public. A set up similar to that of Palm Valley in the Northern Territory where the Ranger holds gatherings around a campfire for all those who wish to meet him/her and learn more about the area is highly recommended.</p>	Considered during Plan preparation.	No 2 (d)
<p><b>B.10.5 Park Headquarters</b>  <i>1 point made</i>            1. It is possible that the Park administrative headquarters may be located in the visitor centre. This does not negate the strategies but terminology may be confusing.</p>	Considered during Plan preparation.	No 2 (d)
<p><b>B.11 Research and Monitoring</b>  <i>1 point made</i>            1. The objectives and the proposed strategies in respect of inventory of Park resources and research and monitoring are supported.</p>	Support for Plan.	No 2 (a)
<p><b>B.12 Plan Implementation</b>  <i>1 point made</i>            1. The objectives and the proposed strategies in respect of Park programs, community participation and term of the Plan are supported.</p>	Support for Plan.	No 2 (a)
<p><b>Map 2 Tenure</b>  <i>2 points made</i>            1. Map requires a legend to be meaningful.             2. There is no legend. Not up to date (ie 5g reserves). It is not friendly to the public.</p>	Map amended.  Map amended.	Yes 1 (e)  Yes 1 (e)
<p><b>Map 3 Mining Tenements</b>  <i>2 points made</i>            1. Map requires a legend to be meaningful.             2. There is no legend.</p>	Map amended.  Map amended.	Yes 1 (e)  Yes 1 (e)
<p><b>Map 7 Management Zones</b>  <i>1 point made</i>            1. Numerous changes.</p>	Map amended	Yes 1 (e)

SUMMARY OF COMMENT	DISCUSSION / ACTION TAKEN	PLAN AMENDED
<p><b>Map 8 Access</b>  <i>2 points made</i></p> <p>1. Map is incomplete. It should show the new road between Marandoo and the Great Northern Highway and tracks in the southern portion of the Park.</p> <p>2. Munjina should be shown on this map (and Wittenoom deleted?) It is not the "Hamersley-Mt Bruce Road" just Mt Bruce road. The "Route under investigation" was discarded before this Plan was released and the road is currently under construction.</p> <p><b>Map 9 Park Facilities</b>  <i>1 point made</i></p> <p>1. No facilities are shown in the main camping area in Dales Recreation Area. Auski (Munjina) roadhouse is incorrectly shown in the Park. The location is approximately correct but it has been excised from the Park. The information and water symbols near the junction of Joffre Falls and Yampire roads should be on the east side of Yampire Gorge road. It is not the "Hamersley Mt Bruce Road" just Mt Bruce Road.</p>	<p>Map amended.</p> <p>Map amended.</p> <p>Map amended.</p>	<p>Yes 1 (e)</p> <p>Yes 1 (e)</p> <p>Yes 1 (e)</p>

## **APPENDIX 1.**

### **SUBMITTERS TO THE DRAFT MANAGEMENT PLAN**

#### Individuals

C Muller  
Anonymity requested

#### Private Sector Corporations

Hamersley Iron Pty Ltd

#### Community Organisations

Armadale 4WD Club  
Pilbara Tourism Association  
Karijini Aboriginal Corporation  
WA Association of 4WD Clubs

#### State Government

Water and Rivers Commission  
Department of Resources Development  
Water Corporation  
Agriculture Protection Board of WA  
Pilbara Development Commission  
Conservation and Land Management Pilbara Region  
CALM<sup>fire</sup>  
Main Roads Department

#### Local Government

Shire of Ashburton