

Herdsman Lake Regional Park

CALM LIBRARY ARCHIVE
NOT FOR LOAN

ANALYSIS OF PUBLIC SUBMISSIONS

TO THE DRAFT MANAGEMENT PLAN

DRAFT

Department of Conservation and Land Management, City of Stirling
and the
Conservation Commission of Western Australia
2003

Table of Contents

INTRODUCTION	III
ANALYSIS OF PUBLIC SUBMISSIONS	III
Method of Analysis	iii
Number and Origin of Submissions	iv
ANALYSIS TABLE	IV
ANALYSIS PROCESS	V
TABLE OF PUBLIC SUBMISSIONS	I
General Comments	1
Preface.....	2
A. INTRODUCTION	2
1 - Purpose and Status of the Management Plan.....	2
2 - Regional Parks.....	3
3 - Herdsman Lake Regional Park.....	3
4 - The Management Plan and Community Involvement.....	5
B. PRICIPAL MANAGEMENT DIRECTIONS	5
5 - The Vision for the Park.....	5
6 - Management Policies	7
7 - Park Boundary and Land Tenure.....	8
8 - Legislative Amendments and Interim Management.....	9
9 - Park Management Zones	9
10 - Integrated Management of the Park	10
11 - Key Performance Indicators	11
C. CONSERVATION	13
12 - Conservation Goal.....	13
13 - Geomorphology and Soils	13
14 - The Lake and Wetlands	13
15 - Flora and Vegetation.....	17
16 - Fauna.....	18
17 - Weeds	20
18 - Fire	21
19 - Pest Control	21
20 - Pets and Introduced Animals.....	22
21 - Rehabilitation	23
22 - Cultural Heritage.....	24
23 - Park Aesthetics and Landscape Amenity.....	25
24 - Greenway Corridors and Links.....	25
D. RECREATION	26
25 - Recreation Goal and Guiding Principles	26
26 - Visitor Use.....	26
27 - Recreation Masterplan	26
28 - Recreation Sites and Facilities	27
29 - Park Access and Circulation.....	29
30 - Signs	31
31 - Visitor Safety.....	31
32 - Utilities and Park Services.....	31
E. COMMERCIAL CONCESSIONS	32
33 - Commercial Goal and Guiding Principles	32
34 - Leases and Licences	33
35 - Mining and Extraction of Basic Raw Material	35
F. RESEARCH AND MONITORING	35
36 - Research and Monitoring Goal	35
37 - Research and Monitoring	35

G. COMMUNITY RELATIONS	36
38 - Community Relations Goal.....	36
39 - Information, Interpretation and Education	36
H. PLAN IMPLEMENTATION	37
40 - Priorities, Funding and Staff.....	37
41 - Community Involvement.....	37
42 - Term of the Plan.....	37
43 - Performance Assessment.....	37
APPENDIX I - SUBMITTERS TO THE DRAFT MANAGEMENT PLAN	39

INTRODUCTION

This document is an analysis of public submissions to the draft management plan for the Herdsman Lake Regional Park 2001- 2011. Comments have been detailed to the section of the draft management plan to which they refer.

The Herdsman Lake Regional Park Draft Management Plan was released for public comment on 5 June 2001 until 5 September 2001. A total of 34 public submissions were received. All submissions have been summarised and changes have been made to the plan where appropriate.

Following the release of the plan, advertisements were placed in local and Statewide newspapers advising that the draft management plan was available for comment. The draft plan was distributed to State Government departments, tertiary institutions, recreation and conservation groups, local authorities, libraries and numerous individuals who expressed interest during the preparation of the draft. Copies of the plan were available for perusal at Department of Conservation and Land Management and the City of Stirling. The plan was available for purchase from several Department of Conservation and Land Management offices within the metropolitan area of Perth.

ANALYSIS OF PUBLIC SUBMISSIONS

Method of Analysis

The public submissions to the Herdsman Lake Regional Park Draft Management Plan were analysed according to the process depicted in the flow chart on page v. More specifically:

All comments were collated according to the section of the draft plan they addressed.

Each comment was assessed using the following criteria:

1. The draft management plan **was amended** if the point;
 - (a) provided additional resource information of direct relevance to management;
 - (b) provided additional information on affected user groups of direct relevance to management;
 - (c) indicated a change in (or clarified) Government legislation, management commitment or management policy;
 - (d) proposed strategies that would better achieve/assist with management goals and objectives; or
 - (e) indicated omissions, inaccuracies or a lack of clarity.
2. The draft management plan **was not amended** if the submission:
 - (a) clearly supported the draft proposals;
 - (b) offered a neutral statement, or no change was sought;
 - (c) addressed issues beyond the scope of the plan;
 - (d) was already in the plan, or had been considered during plan preparation and the recommendation of the draft plan was still considered the best option;
 - (e) was one amongst several widely divergent viewpoints received on the topic and the recommendation of the draft plan was still considered the best option;
 - (f) contributed options which were not possible (generally due to some aspect of existing legislation, Government or departmental policy);
 - (g) was based on incorrect information or information that was unable to be validated;
 - (h) involved details that are not appropriate or necessary for inclusion in a document aimed at providing management direction over the long term;

The reasons why recommendations in the draft plan were, or were not changed and the relevant criteria used were discussed with each comment. Minor editorial changes referred to in the submissions have also been made.

Comments made in submissions have been assessed entirely on the cogency of points raised. No subjective weighting has been given to any submission for reasons of its origin or any other factor which would give cause to elevate the importance of any submission above another.

Number and Origin of Submissions

The number and place of origin of submissions are listed below.

	Number	Percentage
Individuals	18	53
Community Organisations	6	18
Government	9	26
Educational Institutions	1	3
TOTAL	34	100

A list of the submitters to the Herdsman Lake Regional Park Draft Management Plan is given in Appendix I.

ANALYSIS TABLE

The analysis table contains:

- The number of different comments made about each section of the draft plan;
- The number of submissions making each comment;
- A summary of each comment made on the draft plan;
- An indication whether or not the comment resulted in an amendment to the final plan;
- A discussion on why the comment did not result in an amendment to the final plan, or an indication of what action was taken in the final plan; and
- The criteria by which each comment was assessed.

ANALYSIS PROCESS

ANALYSIS PROCESS

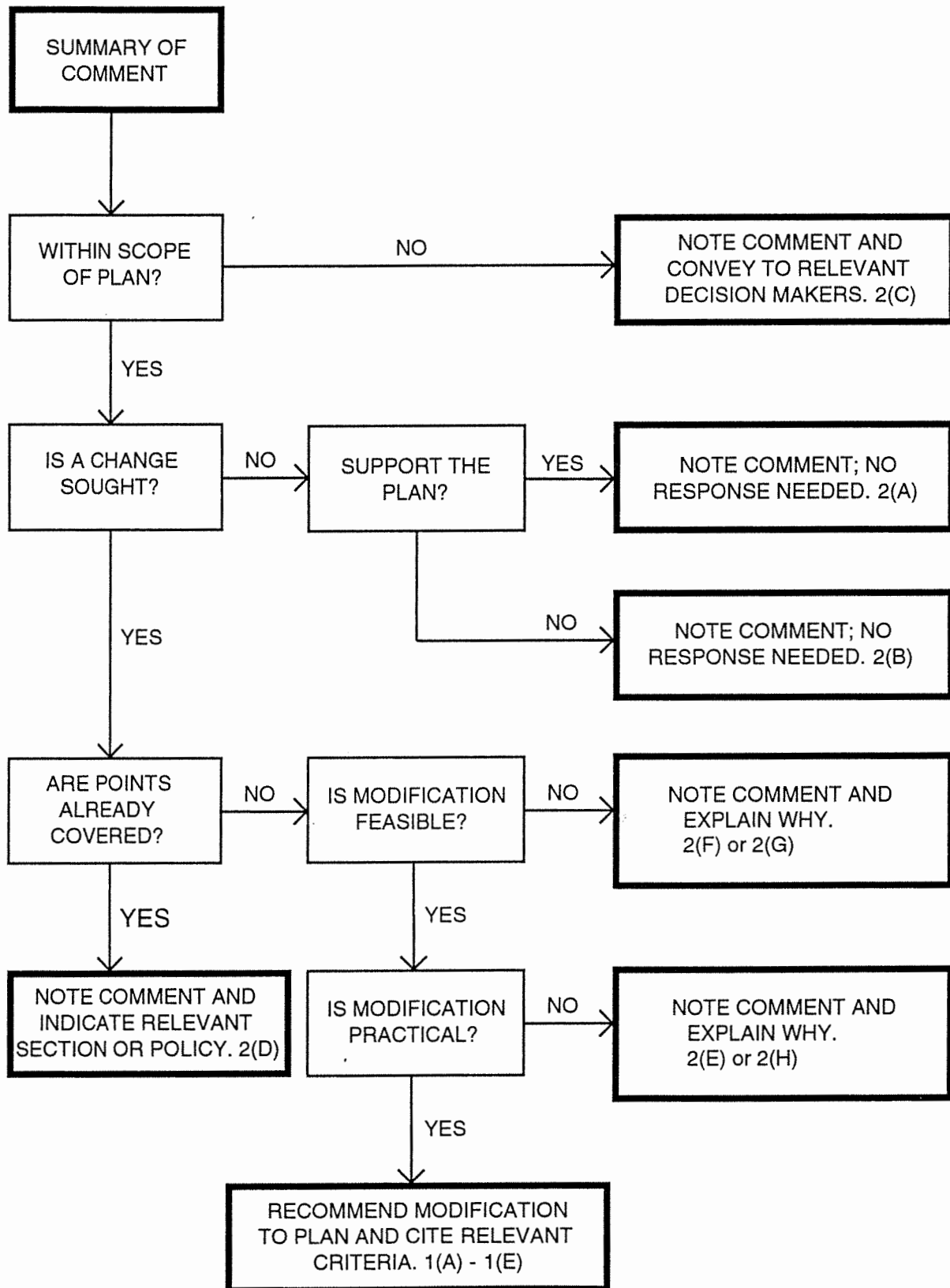


TABLE OF PUBLIC SUBMISSIONS

COMMENT NUMBER	NO. OF SUBS	SUMMARY OF COMMENT	DISCUSSION / ACTION TAKEN	PLAN AMENDED	CRITERIA
		General Comments			
1	2	Congratulations for the care and detail in compiling this draft.	Supports the plan.	No	2A
3	1	Love the natural pristine beauty of the area and have developed a deep appreciation of the considerate non-invasive way it has been managed to date. If this were to change, it would not only be a tragedy, but it would constitute a breach of faith to local residents.	Neutral statement.	No	2B
4	1	Like the layout and concise format of the draft.	Supports the plan.	No	2A
5	1	The plan is a very positive step forward, although until funds are made available to implement, it will remain exactly that - a plan!	Supports the plan.	No	2A
6	1	There is an amazing similarity to the Yellagonga Regional Park Draft Management Plan.	It is important that consistency is applied across the management of Perth's Regional Parks, particularly when parks contain similar landscape features such as wetlands.	No	2B
7	1	Despite criticisms two years ago, the accompanying maps have neither been upgraded nor updated.	Comments considered during plan preparation. Maps within plan have been amended where appropriate.	No	2D
8	1	The Authors are unwilling or unable to incorporate any recent or relevant data from local NGO's. Rather the contractors and others relied on very dated and irrelevant reports and surveys while "searching literature" only. It does not improve the qualities of CALM products, nor it's credibility and work. If nobody has done any recent fieldwork and the management effort is based on superseded data, how will that Conservation Output Key Performance be rated using the ten year old information?	The management plan is based on available data. The measurement of performance will be against KPI's audited through the implementation of this plan.	No	2D
9	1	The Authors were unable to complete the chapters on land tenure, security and status and boundaries. That is despite a powerful Improvement Plan No 21. Note chapters 7 & 8 and the pertaining strategies.	The draft management plan provided a basis for land tenure negotiations with the City of Stirling.	No	2D
10	1	Why did the authors forget to include or give recognition to Environment 2000 (August 1974) despite having had it supplied by the Advisory Committee and considering your extensive rhetoric on community relations and participation.	Considered during the preparation of the plan and was not relevant to the detail of this plan.	No	2D

COMMENT NUMBER	NO. OF SUBS	SUMMARY OF COMMENT	DISCUSSION / ACTION TAKEN	PLAN AMENDED	CRITERIA
11	1	Suggest that the planners look once more at this highly standardised and opened product.	The level of detail is considered appropriate given the plan needs to provide direction for changing circumstances over its ten-year term.	No	2D
12	2	There has been a perception amongst owners of the properties in the Waterside area that management and the development of the lake's natural resources has often been at the expense of those in other parts of Herdsman Lake. It is hoped that the proposals set out in the draft plan will go some way to redressing this imbalance.	The management of the lake has been considered holistically as part of this plan.	No	2D
13	1	<p>Fails to deliver the best biodiversity conservation outcomes. This is particularly so in the way that water levels are treated.</p> <p>Preface</p> <p><i>No Comments</i></p> <p>A. INTRODUCTION</p> <p>I - Purpose and Status of the Management Plan</p>	Water levels will be considered in the Overall Water Management Plan as stated in Section 14 of the plan.	No	2C
1	1	Page 1 – Statement re Purpose of the Plan is certainly a very positive approach. Effective management in the past is certainly questionable.	Supports the plan.	No	2A
2	1	Page 1 – In the first paragraph the word Education should be included. Original submissions dated 22 October 1974 and 8 August 1975 stressed the educational aspects of any development of a study centre at Herdsman Lake.	Environmental education is considered very important in the management of Herdsman Lake Regional Park and as such is mentioned in Section 5 – Vision and Section 39 – Information, Interpretation and Education.	No	2D
2	1	Para 4 should read: "The Conservation Commission of Western Australia, the Western Australian Planning Commission and the Water Corporation endorse this Plan and acknowledge that CALM has the responsibility for coordinating the management of the Park."	The role of the Water Corporation is addressed in Section 6 of the plan.	No	2D
3	1	Note that the LGA has not endorsed any of the 132 strategies as yet.	It is anticipated that the Stirling City Council will endorse the final management plan.	No	2B

COMMENT NUMBER	NO. OF SUBS	SUMMARY OF COMMENT	DISCUSSION / ACTION TAKEN	PLAN AMENDED	CRITERIA
4	1	Para 1 should read: "The Plan should provide statutory direction over all lands and waters of the Park, not just those vested in the Conservation Commission of Western Australia and managed by the Department of CALM."	The plan provides statutory direction over land managed by the Department of Conservation and Land Management. The City of Stirling's commitment to the management of the park will be through Council's endorsement of the plan.	No	2G
		2 - Regional Parks			
1	1	What is a Regional Park: reword second para to "Regional Parks may comprise Crown lands placed in the care, control and management of State government...."	Text amended.	Yes	1E
2	1	The Regional Park Concept: reword first sentence to "The concept of Regional Open Space was first introduced to Western Australia by the Stephenson - Hepburn report....."	Text amended.	Yes	1E
		3 - Herdsman Lake Regional Park			
1	1	Observed that Balgay Drain and Herdsman Main Drain overflow even at low flow. The structure (stop boards) at Balgay Drain especially, allows water to flow around and behind the boards and enter the Industrial and Powis Lakes.	Text amended.	Yes	1A
2	1	While Improvement Plan 21 gave the SPC great power to complete all capital works within a set time, it failed to do so. There is no mentioning of horse agistment anywhere and the detrimental effects of horse activities to nearby waterbodies and the qualities of that water. The landscape values of the wetland have nothing to do with the CBD's skyline. Finally, the commercial values are an invention of the Department alone. Nothing is recorded on this subject in the Improvement Plan 21, in the Cabinet Minutes from February 2, 1986 or in the only Public Workshop activity in 1998.	The intent of this section is to provide an overview listing the main threats and values of the park, rather than a detailed discussion of the management issues and strategies.	No	2D
3	1	Overview - Para 4, sentence 1, page 2 should read: "At present Herdsman Lake is a catchment basin for the surrounding urban and industrial areas." Just because Herdsman Lake acts as a compensation basin for its catchment today, should not mean that it always must fulfil this role.	Noted. The Department acknowledges stormwater as a threat to the Park. This issue will be considered in the Overall Water Management Plan. The modification of regional drainage schemes is beyond the scope of the plan.	No	2F

COMMENT NUMBER	NO. OF SUBS	SUMMARY OF COMMENT	DISCUSSION / ACTION TAKEN	PLAN	CRITERIA
				AMENDED	
4	1	Overview - Para 4, sentence 4 page 2: Dispute that consistent high water levels threaten the conservation values of the park. It has been my observation, on a daily basis over the last two and half years, that conservation values are enhanced by higher water levels.	Text amended, although water levels will be considered in more detail in the Overall Water Management Plan.	Yes	1A
5	1	Overview - Para 6, page 3: it is true that a range of recreational opportunities are afforded for Park visitors, however the length of time that they may stay here is affected by the lack of public toilet facilities and drinking fountains.	Noted. Toilets will only be considered as part of major capital improvements within the Park. Water fountains will be considered at picnic areas.	No	2D
6	1	Overview - Para 3, first sentence – reword to “In the past, areas of Herdsman Lake have been used for...”	Text amended.	Yes	1E
7	1	Natural Environment Value – query second sentence “It is one of the few remaining wetlands on the Swan Coastal Plain.....”	Text amended.	Yes	1E
8	1	Natural Environment Value – query statement “Some of these birds are transequatorial migratory birds.” – as these are very low now.	Noted.	No	2H
19	1	Landscape Value - Para 2, sentence 1, page 3 should read: “Scenic views over the central wetland can be enjoyed from the Wildlife Centre on the southern shore, while observation of wildlife on the open water can be made from most sections of the Lake’s edge.”	Text amended.	Yes	1E
10	1	Recreation Value - Para 1, sentence 1, page 4 should read: “The Park provides for a range of natural history recreation opportunities and its urban locality and accessibility enhances the area as a passive leisure resource”. We need to clearly define the form of recreational activities, which are appropriate for the lake, and its surrounds.	Future recreation activities in the park will be guided by the Recreation Guiding Principles (Section 25).	No	2G
11	1	Recreation Value - Para 1, sentence 2, page 4 should read: “Of particular significance is the opportunity to recreate in a natural wildlife environment within an urban area, and become involved in understanding the wetland and wildlife through involvement in the Herdsman Lake Wildlife Centre. ”	Noted.	No	2H
12	1	Recreation Value - Para 1, sentence 3, page 4 should read: “A variety of natural features such as the lake, wetlands and wildlife, provide visitors with a range of natural history experiences and passive recreation opportunities”. The main aim of the regional park management plan should be to ensure the conservation, and where possible the enhancement of the conservation values of Herdsman Lake.	The Regional Park presents opportunities of both active and passive recreation.	No	2D

COMMENT NUMBER	NO. OF SUBS	SUMMARY OF COMMENT	DISCUSSION / ACTION TAKEN	PLAN AMENDED	CRITERIA
13	1	Commercial Value - Para 1, sentence 1, page 4 should read: "There are some opportunities for the establishment of environmentally friendly commercial operations within Herdsman Lake Regional Park." These could range from seasonal refreshment stands at activity nodes around the Park, to a café restaurant, or <i>enhanced</i> educational facilities at the Herdsman Lake Wildlife Centre.	Opportunities for commercial concessions are outlined in Section 33 and will be guided by the Commercial Guiding Principles	No	2D
14	1	Commercial Value – first para – reword to "There are opportunities for the establishment of commercial operators within <i>or around</i> Herdsman Lake Regional Park."	The suggested change is beyond the scope of the plan.	No	2C
15	1	Commercial Value – don't think that a café or restaurant is appropriate – what has a café or restaurant got to do with the Park's values?	A sensitively designed cafe, kiosk or restaurant could enhance the range of recreation opportunities within the Park, without adversely affecting other park values.	No	2D
16	1	Research Value - Para 3, page 4: should reword to: "The Herdsman Lake Wildlife Centre, currently provides environmental education and information to schools, <i>universities</i> , <i>TAFE</i> and the general public, in the areas of wildlife, wetlands, ecosystems, human impacts and the effects of drainage systems in urban environments. The opportunity exists to further develop this <i>educational facility to further enhance the community's understanding of these issues.</i> "	Text amended.	Yes	1B
		4 - The Management Plan and Community Involvement			
1	1	Phase 5 needs to be rephrased.	Text amended.	Yes	1E
		B. PRICIPAL MANAGEMENT DIRECTIONS			
		5 - The Vision for the Park			
1	1	Long Term Vision - Sentence 3: Change to: "The Park will be an exciting and diverse community space allowing for environmental education, cultural interpretations as well as sustainable <i>passive</i> recreation use."	Herdsman Lake Regional Park has been established for a variety of reasons including active and passive recreation use.	No	2D
2	1	Long Term Vision – there is no mention of <i>biodiveristy</i> and the last sentence is poor English.	Text amended.	Yes	1E

COMMENT NUMBER	NO. OF SUBS	SUMMARY OF COMMENT	DISCUSSION / ACTION TAKEN	PLAN AMENDED	CRITERIA
3	1	Recreation Goal - Change to: "Management for <i>passive</i> recreation and leisure...."	Herdsman Lake Regional Park has been established for a variety of reasons including active and passive recreation use.	No	2D
4	1	Recreation Goal – query the use of 'which' in the statement "Manage for recreation and leisure by providing high quality recreation opportunities which..."	Recreation Goal amended.	Yes	2E
5	1	Commercial Goal - Change to: "Allow for <i>environmentally</i> appropriate commercial and other uses within the Park that service some visitor requirements, do not further degrade conservation values at the lake, and may contribute to Park Management."	Opportunities for commercial concessions are outlined in Section 33 and will be guided by the Commercial Guiding Principles.	No	2D
6	1	Commercial Goal – query the use of 'minimise' in the statement "Allow for appropriate commercial and other uses within the Park that service visitor requirements, contribute to Park Management and <i>minimise</i> ...". If a commercial venture has any adverse effects on park values it should not be accepted.	Text amended.	Yes	1E
7	1	Research and Monitoring Goal - Reword to: "Seek a better understanding of the natural environment at the lake, and research cultural and social environments and visitor use impacts on the lake so that the impacts may be progressively minimised in the future through improved Park Management."	Text amended to reflect comment.	Yes	1E
8	1	Community Relations Goal - Reword to: "Promote informed appreciation of the Park's natural environment, cultural values and <i>passive</i> recreation opportunities and facilitate liaison with the community about its <i>environmental</i> management."	Herdsman Lake Regional Park has been established for a variety of reasons including passive and active recreation as well as for the management of natural and cultural environments.	No	2D
9	1	Integration of Management Goal - Change to: " <i>Further</i> develop and maintain integrated and coordinated....."	Text amended.	Yes	1E
10	1	Strategy 1 - Reword to: 1. "Manage the Park for conservation and allow <i>passive recreation</i> and environmentally friendly uses of the Park."	Herdsman Lake Regional Park has been established for a variety of reasons including passive and active recreation use.	No	2D
11	2	Page 5: Biodiversity conservation should be an explicit part of the Vision for the Park, and should be referred to throughout the plan instead of "conservation".	Vision amended. The term conservation is also used in the context of heritage and landscape protection and management.	Yes	1E

COMMENT NUMBER	NO. OF SUBS	SUMMARY OF COMMENT	DISCUSSION / ACTION TAKEN	PLAN AMENDED	CRITERIA
		6 - Management Policies			
1	1	It should be recognised that stormwater and wildlife do not “mix” well. Management policies and strategies related to the Water Corporation of WA and local councils which discharge to the lake should clearly specify water quality indicators that must be met.	Water quality indicators are to be considered as part of a catchment management plan and overall water management plan which are recommended in Section 14.	No	2C
2	1	First para - objective – query the use of the word ‘complement’.	Text amended.	Yes	1E
3	1	Second para – brackets should be removed from the dates. Query the statement “Policies are published and distributed throughout CALM as policy statements”.	Text amended.	Yes	1E
4	1	Third para - Query the use of the words ‘intent’ and ‘principles’.	“Intent” considered appropriate, “principles” amended.	Yes	1E
5	2	Fourth para – query the use of the word ‘should’.	Text amended.	Yes	1E
6	1	Conservation Commission of Western Australia and CALM Management Policies - Sentence 5, page 5: Reword to: “These policies, as they relate to this Park, cover aspects such as conservation, education and <i>passive</i> recreation.”	Herdsmen Lake Regional Park has been established for a variety of reasons including passive and active recreation use.	No	2D
7	1	Water Corporation - Sentence 2: Reword to: “The Water Corporation will adopt the principles outlined in this Plan as policy for managing drainage into and from Herdsmen Lake, and <i>will seek future solutions to minimise these impacts.</i> ”	Already contained within the plan and considered in Section 14.	No	2D
8	1	Strategy 1, page 5 - Re-sequence the wording to: “Apply CALM and Conservation Commission of Western Australia policies that relate to conservation, community involvement, research and monitoring and passive recreation in the Park (CALM) (Ongoing).”	Text amended (except passive recreation).	Yes	1E
9	1	Strategy 2 – query the use of the word ‘principles’.	Text amended.	Yes	1E
10	1	Strategy 3 – query the use of the word ‘principles’.	Text amended.	Yes	1E

COMMENT NUMBER	NO. OF SUBS	SUMMARY OF COMMENT	DISCUSSION / ACTION TAKEN	PLAN AMENDED	CRITERIA
		7 - Park Boundary and Land Tenure			
1	1	This chapter contains inconsistencies and contradicts other draft plan texts. No outsider will know where Lot 41 is in praxis, in fact we have trouble locating it and possibly could not be dealt with in isolation. The area of between the stored mound of sand, the dredge and the southern, unfinished part of the estate rapidly becomes a mess by way of rubbish, weeds and unfettered access. Who manages what and where?	Specific mention of Lot 41 Pearson Street, Churchlands has been removed. The boundary of the Park reflects the area reserved for Parks and Recreation in Metropolitan Region Scheme. Future management will be in accordance with Figure 4 – Management Zones and Areas.	Yes	1E
2	1	Land Tenure - Para 2 page 6: Is the City of Stirling the best local government entity to have involved in the control or management of any of the reserves at Herdsman Lake Regional Park?	All of the Park is contained within the municipal area of the City of Stirling.	No	2F
3	1	Land Tenure – query first sentence “Land within the Park consists of reserves.....”. Is this Unallocated Crown Land as shown on Figure 3?	Text amended. The park contains both Crown Reserves and Unallocated Crown land.	Yes	1E
4	1	Land Tenure – para 4 – Maurice Hamer Park is in Area 11 not Area 9.	Text amended.	Yes	1E
5	1	Land Tenure – para 6, sentence 1 – query use of ‘appropriate statement’ in “Reserves created from WAPC freehold land and vested in the Conservation Commission of Western Australia will be afforded an appropriate purpose...”. This is too vague and in Table 1, page 11 it says Conservation Park.	Text amended to provide greater explanation of the terms conservation park and nature reserve.	Yes	1E
6	1	Crown Reserves and Unallocated Crown Land - Para 1, sentence 1, page 6: Reword to: “Existing Crown Land reserved for utilities or services such as drainage will retain their existing reserve purpose and tenure arrangements, <i>for the present, but these should be relinquished in the future, as more environmentally responsible arrangements are put in place.</i> ”	The reserves containing drainage infrastructure will remain with the Water Corporation or the City of Stirling.	No	2F
7	1	Crown Reserves and Unallocated Crown Land - Para 1, sentence 3, page 6: Reserve 31906 which contains the Herdsman Lake Wildlife Centre should only be changed from a nature reserve to a conservation park, if dogs and cats can continue to be excluded. The nature reserve classification, at present excludes recreation, and it would be advantageous to continue this exclusion, to ensure that the reserve continues to be a safe haven for visiting students and does not attract undesirables.	Pets will be excluded from around the Herdsman Lake Wildlife Centre, this is explained in Section 20.	No	2D

COMMENT NUMBER	NO. OF SUBS	SUMMARY OF COMMENT	DISCUSSION / ACTION TAKEN	PLAN AMENDED	CRITERIA
8	1	Crown Reserves and Unallocated Crown Land - Para 4: Horse activities close to a Regional Park are not appropriate activities for the buffer zone of the lake. Perhaps the desired end result of these investigations and discussions should be delineated by adding to the sentence "with a view to the relocation of the facility in the near future."	Noted. The management plan has been amended to indicate that horse riding at Perth Horse and Pony Club is not an appropriate use in the long-term. In the interim, the activity will be managed to minimise environmental impacts of horse activities.	No	2D
9	1	Crown reserves and Unallocated Crown Land – 3 para, query use of the word 'appropriate' in the sentence "These reserves will be afforded an appropriate...".	Text amended to provide greater explanation of the terms conservation park and nature reserve.	Yes	1E
10	2	Private Property - Para 5, sentence 1: Priority should be placed on acquiring Lot 41, but since this is on the western side of the lake, shouldn't line 2 read to enable access to be upgraded in the north-western section of the Park, not the north eastern which is 2 to 3 kilometres from here?	Text amended.	Yes	1E
8 - Legislative Amendments and Interim Management					
1	1	Interim Management of WAPC Owned Land - Para 2, sentence 2: The sentence should finish with " being placed in the care, control and management of the Conservation Commission of Western Australia." All reference to the City of Stirling should be deleted.	Some WAPC land (for example Area 11) will be transferred to the City of Stirling.	No	2G
9 - Park Management Zones					
1	1	Why is the new term Conservation Park not properly explained in respect to its definition, legal status etc?	Text amended to provide definition of Conservation Park.	Yes	1B
2	1	Figure 4 – The amount of land shown as recreation is overwhelming. In addition, the NW sector will not be finished for years. This chapter has been substantially altered since it was discussed the Advisory Committee. We contend that the committee's opinions certainly are not reflected in that temporary map. We disagreed with 2 for recreation, as well as highlighting the complete disregard for buffer zones. Instead the numbers of Plan areas were increased. We do not agree with designations for 8, 9, 11, 7 and 1 in a largely inaccurate map.	Plan amended in part: <ul style="list-style-type: none"> ▪ Area 1 has been changed to Natural Environment Uses (NEU). ▪ The extent of Recreation Areas 9 and 11 have been decreased. ▪ The zoning for Areas 2, 7 and 8 are considered appropriate. 	Yes	1D
3	1	The Council is prepared to accept vesting of Zones 3 and 11 for the purpose of managing these purely as recreational parkland for public use under conditions previously reiterated.	No change.	No	2A

COMMENT NUMBER	NO. OF SUBS	SUMMARY OF COMMENT	DISCUSSION / ACTION TAKEN	PLAN AMENDED	CRITERIA
4	1	Council prefers not to accept vesting of Zone 6 (Perth Pony Club) and wishes to still pursue the matter of reimbursement of any reliable assets within the site.	Noted. Area 6 has been separated into two new areas. One area will contain the on-site buildings and will be managed by the City of Stirling, the remained will be managed by DCLM.	Yes	1C
5	1	Table 1: Plan Area 1 would be more appropriately included in the Natural Environment Uses Management Zone. The prime emphasis if the area is not recreation, but environmental education. Public access to the area should be by walking trails only. The area at present is an education node and fits better in this management zone.	Text amended.	Yes	1D
6	1	Statement in Table 1, Management Zones, that the development of additional access within Area 12, for conservation and protection, is acceptable. Area 10, the core conservation area, was always intended in the earlier plans for the Lake to be primarily a wildlife refuge, with the enveloping moat system providing security against disturbing influences from dogs, cats and people. If required, which we doubt, others could be established in similar places without intruding on the core conservation area. Boardwalks can be used very efficiently by dogs, cats and foxes and could enable them to breach the core wildlife sanctuary of the Park. Would much prefer, to see access to the central core largely limited to arranged, and supervised visits. There is absolutely no reason for the management plan to encourage a perception that boardwalks will be provided within Area 12.	No boardwalks are proposed within the central conservation area (within the area bounded by the moat). Boardwalks are proposed on the outer edges of the moat in accordance with the Recreation Masterplan.	No	2D
7	1	Table 1 – Area 12, management emphasis should read “The management emphasis of this zone is to protect and where possible enhance the biodiversity conservationVisible evidence of management will be low.	Text amended.	Yes	1E
8	1	Table 1 – Area 12, Acceptable Uses and Facilities – query the use of ‘restricted’ in the first sentence. The development of facilities such as boardwalks and observation platforms is not necessary.	No boardwalks are proposed within the central conservation area (within the area bounded by the moat). Boardwalks are proposed on the outer edges of the moat in accordance with the Recreation Masterplan.	No	2D
		10 - Integrated Management of the Park			
1	1	Whilst the City is prepared to fulfil its obligations in terms of not causing any environmental impacts from areas under its vesting it considers CALM as having all conservation responsibilities within the entire regional park. Council is prepared to assist in any other aspect of management of the regional park, conditional to these being further negotiated and/or reimbursement for the City’s services agreed to. Draft plan recommends or infers both direct and shared responsibility in a number of other aspects of management of the Regional Park not featured in any previous discussions with the City.	Noted, however integrated management of the Park will require the City being involved in issues that affect the entire regional park.	No	2D

COMMENT NUMBER	NO. OF SUBS	SUMMARY OF COMMENT	DISCUSSION / ACTION TAKEN	PLAN AMENDED	CRITERIA
2	1	The Park Management Structure - Paras 1 and 2: I think it is regrettable that the City of Stirling has any management role in the lake, and that if this complete role could not be met by the Department of CALM, that the lake be excised for the boundaries of the City of Stirling and place within the boundaries of the Town of Cambridge.	Option not considered feasible.	No	2F
3	1	The Park Management Structure - Para 3 states: Close co-operation is required by the management agencies and the community for this Plan to be implemented efficiently and effectively. This role of the community in the implementation of the Plan is further emphasised in a common management direction on page 12, where it states: Community involvement and community education are important components in achieving the management goals set out in this Plan. However, in Para 3, where the joint working parties are mentioned, the community has no listed role.	Text amended.	Yes	ID
		11 - Key Performance Indicators			
1	1	Page 13, Table 2 – Under “The wetland ecosystem of Herdsman Lake” and “wetland health”, there should be additional water quality indicators such as heavy metals and typical toxicants found in stormwater (ANZECC guidelines should be used here). Terms such as “wetland health” should not be used. Use of such term implies that one can measure “health”. It will be more appropriate to state parameters which can be measured or assessed, such as water quality, biodiversity and species richness as it is in this case.	Water quality indicators will be considered in the catchment management plan and overall water management plan, which are strategies of the management plan (Section 14). ANZECC guidelines will be considered as a basis for water quality indicators.	No	2C
2	1	Page 12 - Para 3: Key performance indicators for Herdsman Lake Regional Park should include: <ul style="list-style-type: none"> - Environmental education - Environmental awareness Through a long term environmental education program, such as that taking place at the Herdsman Lake Wildlife Centre, we will arouse environmental awareness such that costs associated with environmental damage, vandalism and the like will reduce.	The management and promotion of environmental education and awareness is addressed in Section 39.	No	2D
3	1	Key Value 1: - Why aren't other forms of wildlife such as reptiles, arthropods, crustaceans, etc listed along with the macro-invertebrates and avian community?	The KPI table has been reviewed. KPIs do not cover all objectives (or in this case all fauna) but have been selected to provide a strategic indication of how well the values of the Park are being maintained.	Yes	ID
4	2	Key Value 2 – It would be nice if Herdsman Lake were still a significant summer refuge for trans-equatorial waders. This may occur only if water levels are lower than in the last several years.	Noted.	No	2B
5	1	Key Value 2 - The avian fauna referred to is surely Western Australian native avian fauna? This would preclude the domestic ducks, Rainbow Lorikeets, Corellas, etc.	The KPI relates to all avian fauna including birds of the Perth region and transequatorial migratory wading birds.	No	2B

COMMENT NUMBER	NO. OF SUBS	SUMMARY OF COMMENT	DISCUSSION / ACTION TAKEN	PLAN AMENDED	CRITERIA
6	1	Key Value 4 – The recreation referred to in sentence 1 should be passive recreation to ensure the safety of the wildlife, and other visitors to the Regional Park. It would be appropriate if all authorised vehicle access to the immediate surrounds of the regional park were avoided at times when young turtles were on the move. Should the Key Objective be to maintain acceptable levels of visitor satisfaction? Some visitors to this Park would have high satisfaction if they could kill all the ducks. Others would be happy if they could remove all of the bulrush etc. Should the objective be reworded to something like: “To ensure that visitor use is sustainable and the ensure that the Park is maintained in such a way, that visitors interested in the Parks Wildlife and Ecology have the aims of their visit fulfilled.”	Sustainable visitor use is addressed in the key objective.	No	2D
7	1	Key Value 4 - For the Key Performance Indicators for this Key Value – does it mean if we have 100,000 visitors we are doing it right even if the pressure of human visitation degrades the environment to such an extent or disturbs the wildlife to the extent that none or few of the wildlife continue to live here.	Sustainable visitor use is addressed in the key objective.	No	2D
8	1	Key Value 4 - Key Management Target for this Key Value: Again this needs rewording to something like: “To maintain a rewarding experience for those visitors to the Park interested in the wildlife and the Lake’s Ecology, and to provide an environmentally stimulating visit for others.”	Sustainable visitor use is addressed in the key objective.	No	2D
9	1	Key Value 5: If this is to be retained as it reads, at least the word passively should be placed in the front of the word recreate, to ensure the form of recreation is clear. Concern with this Key Value is the whole tone of the Key Values, Objectives and Performance Indicators. The safety aspect needs to be related to “build structures” but also to provide warnings about the risks posed by some of the inhabitants - especially Tiger Snakes. As it is worded, there are some residents who live around the lake, who would use its present wording as ammunition for their campaign to rid the lake of all of its Tiger Snakes.	Noted.	No	2D
10	1	Key Value 7: Surely some reference to Integrated Catchment Management should be included as Key Value etc., if Key Value 1 is to be achieved, and if the health of the Wetland and its Wildlife is to be enhanced.	Text amended.	Yes	ID
11	1	Table 2: States that the second key objective is “to maintain viable populations and the current diversity of avian fauna species in the Park”. We take the spirit of that objective to mean the maximum diversity of bird species that have used the Park historically, including over the last ten or so years. However, if “current diversity” is interpreted to mean those species using the Park over the last one to three years, it would be using a baseline significantly smaller than the longer term figure. Query statement “No decline in the current populations,.....”. Currently very few trans-equatorial waders coming to Herdsman because water levels are too high. How is this measured? Key Performance Indicators – what does this mean?	Monitoring the KPI will involve the comparison of current and future data with historical records.	Yes	ID

COMMENT NUMBER	NO. OF SUBS	SUMMARY OF COMMENT	DISCUSSION / ACTION TAKEN	PLAN AMENDED	CRITERIA
12	1	<p>A key objective in Table 2 is "To manage water regimes affecting the Park in a manner that complements Water and Rivers Commission policies and enhances the conservation, recreation and cultural values of the Park". The WRC policies are unstated. Given that the Park is managed by this Department, with conservation of biological diversity as a primary objective, it seems extraordinary that our practices are to meet the aims of another Government agency rather than those of the Department of Conservation and Land Management and its. It may in fact be impossible to enhance the conservation values of the Park while being complementary to the policies of the Commission, if those policies require use of the Lake as a compensation basin to override other services that the Lake provides- if that is the case we should say so. The Key Performance Indicators do not include water levels. Fourth dot point is needed which states "Water levels reaching predetermined highs and lows." Key Management Targets are considered a 'cop out'.</p> <p>C. CONSERVATION</p> <p>I2 - Conservation Goal</p>	<p>The KPI table has been reviewed and Key Management Targets have been removed.</p> <p>The Key Objective has been amended to read: "The objective is to manage the Park in a manner that helps protect and enhance the wetland environments of the Park."</p>	Yes	ID
1	1	Change title of section to Biodiversity Conservation.	The term conservation is also used in the context of heritage and landscape protection and is therefore considered appropriate.	No	2D
2	1	Add biodiversity to the goal.	Current goal is considered appropriate.	No	2D
		I3 - Geomorphology and Soils			
1	1	Strategies 2 & 4 - City does not consider having any responsibility for undertaking environmental surveys and monitoring programmes. The exception to this is mosquito monitoring.	Text amended.	Yes	1C
2	1	Para 8 – reword 1" sentence to "Future dredging requirement adjoining Floreat Waters to the north is ..."	Text amended.	Yes	1A
		I4 - The Lake and Wetlands			
1	1	Agree that the control structures on the drains were not built and are not maintained properly. This should be urgently corrected.	Noted. The future of the control devises will be considered through the Overall Water Management Plan for the Park.	No	2A

COMMENT NUMBER	NO. OF SUBS	SUMMARY OF COMMENT	DISCUSSION / ACTION TAKEN	PLAN AMENDED	CRITERIA
2	1	Page 17 - Data collected shows that late winter storms carry same load and often higher load than first winter storms. This suggests high and steady availability of nutrients and other pollutants in the catchment.	Text amended.	Yes	1A
3	2	Page 18 - The development of emergency pollution response is urgently required. Recently there was a large fish kill in the Balgay drain. The causative agent was not identified but it is suspected that it was a toxic chemical. The ability to prevent or contain future incidents would help to protect the wetland of further impacts.	Noted.	No	2A
4	1	Needs to be some information about what to do when an algal bloom occurs in the lake. Samples need to be collected and identified. If the algal is toxic then the Water and Rivers Commission and the Health Department need to be notified. The Shire then needs to erect warning signs to advise the public of potential problem and to avoid contact with the algae.	Text amended.	Yes	1A
5	1	Section 14, Para 6 - The Water and Rivers Commission require being included in this consultation process. One wonders as to the effectiveness of the named Government agencies, in light of the fact that after 13 years of waiting for this Water Management Plan, it still does not exist. Community comment on this Water Management Plan should also be invited.	Noted. The Department of Environment (which includes the former Water and Rivers Commission) are included in Strategy 1, Section 14.	No	2D
6	1	Water Levels, page 16 - There is no mention in this section of the impact of the increasing frequency of one in a hundred year rain events.	Beyond the scope of this plan.	No	2C
7	1	Para 6, Sentence 1 - The word threat implies that these increased water levels are going to damage the ecosystem, yet if we hadn't had the increased water levels for the summers 2000-2001, many of the water birds that found refuge here during Perth's driest summer on record, would not be with us today.	The Department considers increased water levels as to threat to the ecosystems of Herdsman Lake.	No	2E
8	1	Para 6, Sentence 2 - Changes in water levels will certainly influence vegetation – but shouldn't the sentence make it clear that raised water levels will inhibit the germination of <i>Melaleuca raphiophylla</i> and thereby inhibit its replacement of the <i>Typha orientalis</i> . Conversely, the increased water levels inhibit the growth of the <i>Typha orientalis</i> , and increase the size of the meres in the centre of the lake thereby increasing the open water areas where many waterbirds feed.	Noted.	No	2E
9	1	Para 6, Sentence 8 - A permanent increase in the water levels at the Lake would most definitely result in an increase in the area of open water, and as mentioned above provide additional feeding areas for ducks and swans. Rises in water level should not have a great impact on the productivity of submerged and floating plants at the lake, and will not greatly impact on the amount of food available for waterbirds and browsers.	The Department considers increased water levels as to threat to the ecosystems of Herdsman Lake.	No	2E

COMMENT NUMBER	NO. OF SUBS	SUMMARY OF COMMENT	DISCUSSION / ACTION TAKEN	PLAN AMENDED	CRITERIA
10	1	Water Levels - Para 9: Responsibility to measure water levels may lie with the Water and Rivers Commission, but this should be done in conjunction with a University, such as is being done at Perry Lakes.	Noted.	No	2C
11	1	Water Levels - Para 10: Surely managing water levels for conservation purposes should be the major priority of a Regional Park. The sentence should read: Managing water levels for conservation purposes, pollution containment, water movement, as well as the drainage requirements of the Water Corporation, will be explored through the Overall Water Management Plan.	Text amended.	Yes	1E
12	1	Water Quality - Para 1, Sentence 1: In contrast to the statement that the four open water bodies within Herdsman Lake appear to be generally intermediate in nutrient enrichment; Clarke, Davis, Murray (1990) state – "Floreat Waters was the most nutrient enriched of the three deepened water bodies and could be classed as eutrophic".	Text amended.	Yes	1E
13	1	Water Quality - Para 1: The Water Quality data referred to in this section was collected by the State Planning Commission and consultants. None of these bodies are what I would consider peak agencies for Water Quality data, and therefore the accuracy of the data is questionable. Further, the age of the data, given the amount of urban and industrial development, both close to the lake and throughout the Herdsman Lake Catchment, and the apparent change in rainfall patterns since, makes the use of this data very limited.	The limitation of the data is recognised, however, the Department of Conservation and Land Management considered the data acceptable when the report was prepared and as such it represents an historical account of water quality at the Lake.	No	2D
14	1	Water Quality - Para 9: Septic tanks should also be included as a major source of pollution.	Noted.	No	1G
15	1	Water Quality - Para 12: Uneaten bread may also develop botulism, which can lead to the death of waterbirds. Bread also attracts seagulls to the wetland, which have been known to kill ducklings. Feeding of waterbirds may lead to more aggressive behaviour by wildlife expecting to be fed. Not all of the feeding occurs at the lakeside. Some local residents feed the birds from their houses – so the birds congregate outside their houses waiting to be fed. When this occurs in areas like Floreat Waters, the waterbirds are at risk of being hit by vehicles as they wait on the road to be fed.	The plan discourages the feeding of waterbirds in Section 16 – Fauna.	No	2D
16	1	Health of the Wetland Ecosystem - Para 3: Besides the parameters listed, the indicators of wetland health should include amphibians and reptiles.	Noted. The parameters listed are sourced from Davis (1998) as part of a rapid bio-assessment of wetland health.	No	2D

COMMENT NUMBER	NO. OF SUBS	SUMMARY OF COMMENT	DISCUSSION / ACTION TAKEN	PLAN AMENDED	CRITERIA
17	2	The control of water levels for the benefit of the natural values of the lake is of fundamental importance to biodiversity conservation and is still not handled well in the Plan. Concerned that as it stands the Plan will not ensure that the conservation of biological diversity will be met. Noting that both 2000/2001 summer and 2001 winter have been very dry, this is of major concern. If water levels stay near or above those experienced during 1999-2001 many species of wading birds that have used the Lake will not continue to do so. Water levels in early August 2001 are the highest that we have ever seen, and this was at a time when Perth's annual rainfall showed a 300mm deficit and catchment dams in the hills are at their lowest levels since 1962.	Noted. The high water levels in the Lake experienced during 1999-2001 appear to have been caused by the Herdsman Main Drain being partially block. The Water Corporation has rectified the matter and water levels have returned to a pattern that reflects historical patterns.	No	2D
18	1	The Plan does not discuss the capability of the Herdsman Main Drain to deal with excess water in the Lake, nor does it discuss whether there have been increases in the amount of water entering the Lake in recent years. It states "the volumes of water entering the Lake and the relative significance of different sources of input are unknown". This is a most unsatisfactory state of affairs and must be remedied; however, the Plan defers further consideration of this important issue, which is to be dealt with in another plan. The Plan should make a commitment that the water management plan will be completed within one year of the adoption of the Management Plan. It should also provide principles that the secondary plan must meet, including relatively low summer/autumn water levels in most years.	Text amended to include a timeframe for completing the overall water management plan. The scope of the overall water management plan is listed in Strategy 1.	Yes	1E
19	1	Strategy 1 – The development of an overall water management plan as well as the management of water levels for waterbird habitats is considered the responsibility of CALM and not the City.	Noted, however, the City of Stirling will need to be involved in the overall water management plan given the it is responsible for local stormwater management.	No	2D
20	1	Strategy 1 – Surely it is needed to estimate water volumes entering and leaving the Lake before a plan. As they are not available the plan will be of limited value. Add another bullet point "Define the regime of high and low water levels needed to meet biodiversity objective (either that or define it in the plan).	Noted. Managing water levels is already considered as a component of the proposed overall water management plan.	No	2D
21	1	Strategy 3 – The development and installation of interpretative signage and production of educational material is considered the responsibility of CALM.	Noted, however, the City of Stirling is responsible for the management of reserves vested in it. This may include the provision of interpretive material and signage at these reserves.	No	2D
22	1	Strategy 3: Interpretative and educational material has a role, but it should not be the sole tools in informing park visitors and surrounding residents about fertilisers. This should be reworded: "Interpretative and educational materials and practices, such as the use of the Herdsman Lake Wildlife Centre for forums and environmental education, to inform park visitors and surrounding residents."	The role of the Herdsman Lake Wildlife Centre in the presentation of information, interpretive and educational material is outlined in Section 39.	No	2D

COMMENT NUMBER	NO. OF SUBS	SUMMARY OF COMMENT	DISCUSSION / ACTION TAKEN	PLAN AMENDED	CRITERIA
23	2	Strategy 4 – Re-establish rush beds. Houses on the lakefront are witnessing increasing visits by tiger snakes. The increasing prevalence of bulrushes (typha) is causing this increase as they attract insects, birds, frogs and then snakes and rodents. The bulrushes are foreign to Herdsman Lake and no credit to the lakefront at all as they attract problems as above, obscure the water and views and are spreading. The proposal to plant more reeds, albeit, the natural variety, along the foreshore of the lake is unnecessary and undesirable.	The provision of habitat through the planting of riparian vegetation is considered appropriate in areas of Herdsman Lake	No	2D
24	1	Strategy 4 – The protection and re-establishment of rush beds in any wetland areas fringing Zone 11 (Maurie Hamer Park) is considered the responsibility of CALM.	Text amended.	Yes	1C
25	2	Strategy 5: The Water and Rivers Commission should be included in the list of agencies to be consulted. The community should also be involved in this process, as much of the driving force for the successful implementation of ICM in many catchments has come from the community, not from government agencies.	Text amended.	Yes	1E
26	1	Strategy 6 - City does not consider having any responsibility for undertaking environmental surveys and monitoring programmes. The exception to this is mosquito monitoring.	Text amended.	Yes	1C
27	1	Agree that the development of emergency pollution response is urgently required.	Noted.	No	2A
15 - Flora and Vegetation					
1	1	Insects, 3 para, 2 nd sentence – reword to “No sampling for Phytosphthora has been undertaken in the Park, however it <i>is</i> not considered....”.	Text amended.	Yes	1E
2	1	Aquatic Flora, 2 nd para, 1st sentence – reword to “A significant threat to the local aquatic flora of Herdsman Lake are the outbreaks of blue-green algae (cyanobacteria) blooms..”.	Text amended.	Yes	1E
3	1	Strategy 1 – Non local species should only be used in recreation areas not conservation areas.	Noted.	No	2H
4	1	Strategy 5 - City does not consider having any responsibility for undertaking environmental surveys and monitoring programmes. The exception to this is mosquito monitoring.	Text amended. The monitoring program for bushland condition will be established by DCLM.	Yes	1B

COMMENT NUMBER	NO. OF SUBS	SUMMARY OF COMMENT	DISCUSSION / ACTION TAKEN	PLAN AMENDED	CRITERIA
5	1	Strategy 4 - The development and installation of interpretative signage and production of educational material is considered the responsibility of CALM.	Noted, however, the City of Stirling is responsible for the management of reserves vested in it. This may include the provision of interpretive material and signage at these reserves.	No	2D
6	1	Strategy 4: Reword this to read: "Provide interpretative material <i>and environmental education</i> to local residents encouraging them to plant local species in areas surrounding the Park."	Interpretive material includes environmental education.	No	2H
7	1	Figure 7 - On the map, much of the area to the North west of the two small lakes along Moondyne Drive should be shown as seasonally inundated areas. Similarly, much of the area around the single small lake near the junction of Herdsman Parade and John Saunders Drive should be shown as seasonally inundated.	Figure amended.	Yes	1E
16 - Fauna					
1	1	In order to conserve wildlife, request that road bumps are built along the full length of Lakeside Road (specifically between Dacelo Close and Goldfinch Drive), along All Saints Way in Floreat Lakes, and particularly along Hale Road as it enters the development and forms a T junction with All Saints Way.	Beyond scope of plan. Traffic calming around the Park is the responsibility of the City of Stirling.	No	2C
2	2	Page 23 – Statement 'It is proposed to provide contact details of wildlife carers within the Park for the removal of dangerous or injured fauna' is urgently sought by local residents as no such situation now exists.	Supports the plan.	No	2A
3	1	Avian Fauna - Para 1, sentence 1: WA Gould League records 162 species of birds at Herdsman Lake since 1929.	Text amended	Yes	1E
4	1	Avian Fauna – 1st sentence reword to "Avian fauna in the Park have been surveyed by Birds Australia...".	Text amended.	Yes	1E
5	1	Avian Fauna – para 2, second bullet point is not true any more.	Shallow water and seasonally inundated areas are present at Herdsman Lake.	No	2G
6	1	Avian Fauna - Para 4: The Freckled Duck, <i>Stictonetta naevosa</i> , has been infrequently seen at the south-west corner of the lake since 1999 to 2001. In addition a full size brown and black pelican, <i>Pelicans conspicillatus</i> , has been seen in the same area during August 2001.	Noted.	No	2H

COMMENT NUMBER	NO. OF SUBS	SUMMARY OF COMMENT	DISCUSSION / ACTION TAKEN	PLAN AMENDED	CRITERIA
7	1	Avian Fauna, para 4: Should read: "Two species of birds recorded at Herdsman Lake Regional Park are specially protected under the Wildlife Conservation Act 1950. The <i>Australasian</i> Bittern (<i>Botaurus poiciloptilus</i>) is listed as 'rare or likely to become extinct' while the Peregrine Falcon (<i>Falco peregrinus</i>) is listed as 'otherwise in need of special protection'.	Noted.	No	2H
8	1	Avian Fauna – 5 th para, last sentence. If this is the case then we had better sort out water levels.	Noted.	No	2B
9	1	Waterbirds – 1 st sentence, reword to "Herdsman Lake contains one of the most ...".	Text amended.	Yes	1E
10	1	Waterbirds – second para, last sentence add "Pink-eared Ducks.....are also present at the Lake and breed there".	Text amended.	Yes	1E
11	1	Waterbirds – third para – not much now.	Noted.	No	2B
12	1	Other Birds – 1 st sentence, reword to "Grassland areas around the periphery of the Lake, together with sparsely vegetated areas within the central region, are used as hunting grounds <i>by</i> birds of prey".	Text amended.	Yes	1E
13	1	Other Birds – 4 th para. What about dogs?	The management of dogs is addressed in Section 20.	No	2D
14	1	Reptiles and Amphibians - Para 3, sentence 5: Rather that the removal of the fauna, which implies taking them from Herdsman, where the population is considered important in conservation and evolutionary terms, could removal be replaced by relocated, which could be within the Park, or elsewhere.	Text amended.	Yes	1E
15	1	Reptiles and Amphibians - Para 5: The data is very dated – 1983. As the paragraph says, the replacement of natural habitat with surrounding urban development has markedly reduced the habitat of most amphibian species. Would challenge the statement that Herdsman Lake has a full complement of amphibians expected of a lake on the Swan Coastal Plain.	Text amended.	Yes	1E
16	1	Fish - Para 1, sentence 4: The Mosquito fish has apparently led to a decline in the number of tadpoles due to its aggressive behaviour.	Text amended.	Yes	1E
17	1	Fish – last para, second sentence, reword to "This can have....".	Text amended.	Yes	1E
18	1	Invertebrates – first para, add final sentence "Such strategies are no longer conducted at Herdsman Lake."	Text amended.	Yes	1E

COMMENT NUMBER	NO. OF SUBS	SUMMARY OF COMMENT	DISCUSSION / ACTION TAKEN	PLAN AMENDED	CRITERIA
19	1	Invertebrates - Para 2, sentence 2: The Herdsman Lake Water Quality Study was by Clarke, Davis and Murray (1990).	Text amended.	Yes	1E
20	1	Invertebrates - Para 3 sentence 2: Implies that there are no <i>Odonata</i> or <i>Coleoptera</i> at Herdsman Lake. Whereas Clarke, Davis and Murray (1990) state: "Only three species of <i>Odonata</i> and two <i>Coleoptera</i> were recorded." Again the data is dated and recent sampling has indicated a greater variety of both of these predatory invertebrates.	Noted.	No	2G
21	1	Strategy 1 - Why not include the Herdsman Wildlife Centre in the list of entities monitoring the avian species? They are on site and currently monitoring avian species at Floreat Lakes on a monthly basis.	Text amended to include WA Gould League.	Yes	1E
22	1	Strategy 3 - The development and installation of interpretative signage and production of educational material is considered the responsibility of CALM.	Noted, however, the City of Stirling is responsible for the management of reserves vested in it. This may include the provision of interpretive material and signage at these reserves.	No	2D
23	1	Strategy 3 - Reword: "Provide interpretative and educational material and environmental education through the Herdsman Wildlife Centre which: etc.	The role of the Herdsman Lake Wildlife Centre in the presentation of information, interpretive and educational material is acknowledged in Section 39.	No	2D
24	1	Strategy 4 - Add to the existing sentence – and areas where young tortoises are in high numbers.	Tortoise habitat is considered.	No	2D
25	1	Strategy 5 - Change removal to relocation.	Text amended.	Yes	1E
26	1	Strategy 6 - The development of an overall water management plan as well as the management of water levels for waterbird habitats is considered the responsibility of CALM and not the City.	Noted, the City will not be lead agency in developing this plan. The City has been included given its local stormwater drains discharge into the Lake.	No	2D
		17 - Weeds			
1	1	4 th para, reword to "The invasion of weeds is a major threat to the conservation values of the Park and it is vital....".	Text amended.	Yes	1E

COMMENT NUMBER	NO. OF SUBS	SUMMARY OF COMMENT	DISCUSSION / ACTION TAKEN	PLAN AMENDED	CRITERIA
2	6	Total lack of strategy. Whilst there was a firm commitment to remove the bulrushes, the plan is deficient in implementing these commitments. Should incorporate them with a firm commitment to remove all bulrushes along the lakefront within a specified time period. Bulrush is a non-local species weed as stated and therefore removal of a large portion particularly along the waters edge near Lakeside Road is necessary. It is particularly important to remove it near drains as well as the areas where growth has been rampant. Shallow waters necessary for migratory birds are being continually being reduced in area by its rampant growth. Birds do not use the foreshore where the weeds exist and there is a concern re fire. They are a haven for tiger snakes and rodents, block the view to the lake and there are hundreds of acres of reeds in the central part of the lake and along the internal shore of the lake to provide adequate nesting and breeding areas for all wildlife. A proper management plan needs to be implemented and properly carried out.	Text amended to provide greater direction on the control of <i>Typha orientalis</i> .	Yes	1C
3	1	Strategy 5 - The development and installation of interpretative signage and production of educational material is considered the responsibility of CALM.	Noted, however, the City of Stirling is responsible for the management of reserves vested in it. This may include the provision of interpretive material and signage at these reserves.	No	2D
4	1	Strategy 6 & 7 – The coordination of community volunteer groups in weed control programmes and other wetland/bushland conservation related work is considered a responsibility of CALM.	Text amended.	Yes	1C
		18 - Fire			
1	2	Para 4, sentence 1: The sequence of factors that may be threatened by fire should read "Wild fires need to be avoided in the Park because they threaten nature conservation values, human life and property."	Text amended.	Yes	1E
2	1	para 4 – There has not been a major fire since 1985/6.	Noted.	No	2B
3	1	Para 8, dot point 4, but not in the core conservation area.	Noted. No firebreaks are planned in Area 12.	No	2D
		19 - Pest Control			
1	1	Where are the field results that the Argentine Ants density has increased?	Text amended. The Department of Agriculture stopped monitoring Argentine ants in 2000 and were unable to confirm that Argentine Ant populations around Herdsman Lake have increased.	Yes	1E

COMMENT NUMBER	NO. OF SUBS	SUMMARY OF COMMENT	DISCUSSION / ACTION TAKEN	PLAN AMENDED	CRITERIA
2	6	<p>Page 27 – Mosquito control is currently a major concern especially to the school community because of the associated for disease transmission. Mosquito numbers are frequently at plague proportions at the Chrysalis Montessori School. The school devotes considerable resources to control of the adult population. Effective mosquito control however should also include interruption of the breeding cycle. Request that the management plan include active management of mosquito breeding in the largely artificial lakes on the eastern side of John Sanders Drive. Draining of the grasslands in this area may also assist in this process. Support the recommendation to continue to monitor mosquitos at relevant times of the year and undertake appropriate control practices. Suggest that attempts be made to demonstrate locally contracted mosquito born disease.</p> <p>20 - Pets and Introduced Animals</p>	<p>Management and control of mosquitoes by the City of Stirling and Health Department is based on monitoring and subject to DCLM and Conservation Commission of Western Australia policies.</p>	No	2B
1	2	<p>Residents who live within close proximity to the lake (the report considers a 200 m exclusion zone) have suburb nature assets on their doorstep which more than adequately offset the restriction of 'no pets allowed'. Strongly support the remarks concerning pets and introduced animals.</p>	<p>Supports the plan.</p>	No	2A
2	1	<p>Strategy 1 - The development and installation of interpretative signage and production of educational material is considered the responsibility of CALM.</p>	<p>Noted, however, the City of Stirling is responsible for the management of reserves vested in it. This may include the provision of interpretive material and signage at these reserves.</p>	No	2D
3	1	<p>Strategy 1: Reword to: "Use interpretative information and environmental education through the Herdsman Lake Wildlife Centre, to inform the community about the adverse effects of pets on native fauna and the implications of dumping pets in the Park."</p>	<p>The role of the Herdsman Lake Wildlife Centre in presentation of information, interpretive and educational material is acknowledged in Section 39.</p>	No	2D
4	1	<p>Strategy 2 – The City does not consider itself responsible for dog control within the Regional Park except in those areas directly to be vested in it for recreation purposes. Extension of the City's Ranger Services for dog patrols may be considered at a cost to CALM.</p>	<p>The City of Stirling is responsible for dog control in all public places within its municipality in accordance with the Dog Act 1976.</p>	No	2F
5	1	<p>Strategy 6 – The removal of hybrid and introduced ducks from wetland and other conservation areas of the Park is considered the responsibility of CALM.</p>	<p>Text amended. The City of Stirling acronym removed from strategy.</p>	Yes	1E
6	1	<p>Pets - Para 8: Reword to: At present the Perth Horse and Pony Club operates within an area in the north-east of the Park. Riding horses will only be permitted within this area while the current lease exists.</p>	<p>Future use of the Perth Horse and Pony Club site is subject to further planning and discussions between the Perth Horse and Pony Club (Inc.), the City of Stirling and the Department of Conservation and Land Management.</p>	No	2D

COMMENT NUMBER	NO. OF SUBS	SUMMARY OF COMMENT	DISCUSSION / ACTION TAKEN	PLAN AMENDED	CRITERIA
7	1	Introduced Animals - Para 3: Add to this paragraph. "Bread also attracts seagulls, which are known to kill ducklings during the breeding season."	Noted. Addressed in Section 16.	No	2D
8	1	The intention of the City of Stirling to gazette a Cat control local law and declare a 200 m cat exclusion zone around principle conservation areas is a good first step in reducing predation pressure on wildlife of the Park. However, cats travel far greater distances that 200m in urban areas and much more could be done in terms of publicity and encouragement of responsible cat ownership. The Town of Cambridge exists within 200m.	Text amended to make reference to the Town of Cambridge.	Yes	1B
9	1	Introduced Animals, Para 2: Statement is not consistent with the strategy relating to that topic. Monitoring for any interbreeding between introduced waterfowl and native species is not likely to be useful and is not necessary. Without quite detailed study it will be hard to prove adverse effects, such as changes to the gene pool of native species. Introduced species should be removed form the Park as a matter of course. 21 - Rehabilitation	Text amended.	Yes	1E
1	1	Strategies 1, 2, 3,4, 6 & 8 – It is assumed that all reference to rehabilitation works in these recommendations are with respect to conservation areas of the park. These should be the responsibility of CALM and not the City.	Text amended.	Yes	1E
2	1	Strongly disagree with Para 6 re views. The lake seriously lacks tall vegetation for roosting sites for wildlife. A zone of fringing vegetation around the lake will also serve to reduce the impact of mosquitoes and midges on local residents. Many of the paths around the lake, especially those on the southern and south eastern shores lack trees, which makes use of the paths unpleasant in the warmer months due to the lack of shade. Believe an effective information and education program requires to be conducted to inform residents about the necessity to have fringing vegetation and roosting sites, and the important conservation values of these.	Current strategy is considered most appropriate.	No	2D
3	1	Strategy 5 refers to the use of locally collected seed "where possible" for rehabilitation work. Elsewhere in this section is the statement "Where possible, plant material or seed used in rehabilitation works should originate from within the Park or the nearest viable seed source". This statement, but without the "where possible", is preferable to the words of strategy 5. We cannot conceive a situation where it is impossible to use species that are local, or nearly so, for rehabilitation purposes. It is not desirable to create a loophole by which more unsuitable species may be established in the Park.	Text amended to clarify that the preference is to use seed from within the park for rehabilitation. If seed from within the park is not available then seed of the local provenance will be used.	Yes	1C

COMMENT NUMBER	NO. OF SUBS	SUMMARY OF COMMENT	DISCUSSION / ACTION TAKEN	PLAN AMENDED	CRITERIA
4	1	Strategy 6 – reword to “Encourage members of the local community including schools to participate...”	Text amended.	Yes	IE
		22 - Cultural Heritage			
1	1	All sites (known to the Department of Indigenous Affairs or not) are protected by the provisions of the <i>Aboriginal Heritage Act 1972</i> . Three sites are known in the vicinity.	Noted. Supports the plan.	No	2A
2	1	Aboriginal Use and Association – See Herdsman Lake, Inner City Sanctuary, <i>Landscape</i> , 1986/87. Wetlands were an abundant food source for the Aboriginal people prior to colonisation.	Text amended.	Yes	IE
3	1	Oral history attests to Aboriginal people working for herdsman in the strip of land between Butler’s Swamp near Claremont to Perry Lakes and to Herdsman Lake into the 1950’s.	Noted.	No	1H
4	1	Suggest add strategy: Additional research to generate more information about the former use of the area by Aboriginal people.	Text amended. Included in Strategy 2.	Yes	IE
5	1	Suggest add strategy: Adequate monitoring, by a qualified archaeologist, of any ground disturbing development of the area.	All development will be in accordance with the <i>Aboriginal Heritage Act 1972</i> and the <i>Native Title Act 1993</i> .	No	2H
6	1	Strategies 2 & 3 - The development and installation of interpretative signage and production of educational material is considered the responsibility of CALM.	Text amended.	Yes	1C
7	1	Non-Aboriginal Use and Association – para 7, sentence “The concept of creating deep channels...” Was largely to obtain stable material on which to build new developments.	Text amended.	Yes	IE

COMMENT NUMBER	NO. OF SUBS	SUMMARY OF COMMENT	DISCUSSION / ACTION TAKEN	PLAN AMENDED	CRITERIA
		23 - Park Aesthetics and Landscape Amenity			
1	3	Confused by the reference to "in grassed areas substantial part of the shoreline should be planted with rushes". If rushes mean bulrushes (typha) then this is contrary to the aim of removing them in areas already growing out of control. Also 'rushes would not impede the view of the water etc'. All parkland grassed areas should be maintained free of rushes to maintain the correct balance. Bulrushes provide a habitat for tiger snakes as well as rats and other rodents. It is noticeable that wading birds are active in the grassed shoreline edges. Bulrushes in grassed parklands also spoil the outlook for park users and puts a barrier between them and the water.	It is not intended to plant Bulrush (<i>Typha orientalis</i>). The provision of habitat through planting of local riparian vegetation is considered appropriate along substantial parts of the Herdsman Lake Shoreline.	No	2F
2	1	Page 32 – The grassed area is planted with kikuyu grass. It appears to be thatched and better maintenance is requested. Also there are areas where it is out of control and needs to be removed or cut back.	Noted.	No	2H
3	1	This chapter describes merely "matters of common sense" which nowadays require special goals and strategies.	Noted.	No	2B
4	1	Strategy 6 - It is assumed that all reference to rehabilitation works in the recommendation is with respect to conservation areas of the park. These should be the responsibility of CALM and not the City.	Text amended.	Yes	1C
5	1	Landscape Character – 1 st para, 3 rd sentence, reword to "Vegetation used in the rehabilitation works should be local plant...".	Text amended.	Yes	1E
		24 - Greenway Corridors and Links			
1	1	This Greenway concept was introduced into the market place by a Tingay report and the Perth's "Bushplan". As an aside, the latter has had its name changed already and many sites are being lost all the time. The Greenway concept is not sustainable. Why are the authors not walking along Nos 18 or 30 routes to ascertain the amount of natural vegetation left four years after that report?	Noted.	No	2B

COMMENT NUMBER	NO. OF SUBS	SUMMARY OF COMMENT	DISCUSSION / ACTION TAKEN	PLAN AMENDED	CRITERIA
D. RECREATION					
25 - Recreation Goal and Guiding Principles					
1	1	Maybe the authors should explain what they mean by High Quality Recreation Opportunities, please cite the current low opportunity ones. You are introducing new terms like ROS but fail to clarify the desirability/emphasis/preference of passive and active recreation in this regional park. Similarly why do you need to spend scarce resources on cultural and social environments? Should this not be left to the stewards of Gava Cottage?	Goal Amended. However, regional parks have been established for management and protection of conservation values (biodiversity and cultural), recreation (active and passive) and landscape amenity values.	Yes	1E
2	1	Recreation Goal - Reword this to: "Manage for <i>passive</i> recreation and leisure, by providing <i>environmentally acceptable</i> recreation opportunities, which are compatible with the protection and enhancement of Park values."	Regional parks have been established for a variety of reasons including active and passive recreation use.	No	2D
3	1	Recreation Guiding Principle 1 - Sentence 1, reword to: "Natural <i>ecosystem</i> (including biota, landscapes and particular sites) should be able to sustain the <i>passive</i> recreation, which is occurring or proposed."	Existing text is considered appropriate.	No	2D
4	1	Recreation Guiding Principle 2 - Sentence 1, Reword to: "Recreational activities <i>must be</i> compatible with the....."	Text amended.	Yes	1C
5	1	Recreation Guiding Principle 5 - Sentence 1: Reword to, "A range of passive recreational opportunities should be provided....."	Existing text is considered appropriate	No	2D
26 - Visitor Use					
1	1	Strategy 1 - City does not consider having any responsibility for undertaking environmental surveys and monitoring programmes. The exception to this is mosquito monitoring.	Text amended. CS acronym has been removed from this strategy.	Yes	1E
2	1	Page 35 - Strategy 3: Include an additional dot point relating to the Wildlife Centre: "Encouraging greater visitor use of the Wildlife Centre in order to increase the dissemination of information relating to wildlife and wetland environmental education, and to increase community understanding of Park environmental and conservation values."	Text amended in Section 40.	Yes	1D
27 - Recreation Masterplan					
1	1	Para 1 - Reword to: "A Recreation Masterplan will help ensure that a variety of passive recreation opportunities are offered to the Park....."	Existing text is considered appropriate.	No	2D

COMMENT NUMBER	NO. OF SUBS	SUMMARY OF COMMENT	DISCUSSION / ACTION TAKEN	PLAN AMENDED	CRITERIA
2	1	Para 3 - Reword to, "The revised Masterplan will co-ordinate passive recreation developments within the Park....."	Existing text is considered appropriate.	No	2D
3	1	Figure 9 - The Wildlife Centre Bird hide is not in operation. There are no Picnic Tables on the site. The two Bird Hides along the north east shore are not shown. The play equipment to the west of the parking area at the north end of the lake is not shown. The Herdsman Lake Wildlife Centre is not an appropriate site with commercial operations, it is to continue as an environmental education centre for school children. Perhaps this would be an appropriate use of the Centre on weekends only. The Toilet at the centre is not available for general public.	Figure 9 reviewed and amended.	Yes	1E
4	1	Good to see that footpaths have now been provided in a way that a walker can circumnavigate the Lake almost without having to use dual-use paths. The draft states that separate pathways will be provided for pedestrians where possible. We believe that it is possible to provide footpaths in parallel with dual use paths even in places where the space for paths is narrow.	Supports the plan.	No	2A
5	1	Strategy 1 – What does "Priority will be placed on developing appropriate access in the Park..." mean.	Developing access ways such as walktrails and shared pathways is considered a priority in implementing the recreation masterplan. Existing text is considered appropriate.	No	2B
28 - Recreation Sites and Facilities					
1	7	Support the proposal to provide for active recreation facilities in the Glendalough Open Space, such as sports ground, playground and basketball. Improved pedestrian access from John Sanders Drive should be considered in the development eg footpaths into the area from Jon sanders Drive/Herdsman Parade intersection and from Harbourne Street via Parkland Road.	The proposal for active recreation facilities in Glendalough Open Space have been removed due to resourcing constraints.	Yes	1C
2	1	Why is there no dog exercise area included in the Glendalough sector?	Given the high conservation value of the Park, keeping dogs on leads in all areas of the Park is considered the most appropriate strategy.	No	2D
3	1	Concerns are being raised by people about the Pony Club site. It is unsuitable for its current use.	The future use of the site and the appropriateness of equestrian activities requires further planning and discussion between the Perth Horse and Pony Club (Inc.), the City of Stirling (as the lessor, owner of improvements on-site and agency that currently manages Reserve 28763) and the Department of Conservation and Land Management.	Yes	1C

COMMENT NUMBER	NO. OF SUBS	SUMMARY OF COMMENT	DISCUSSION / ACTION TAKEN	PLAN AMENDED	CRITERIA
4	1	What are your motives around the Wildlife Centre? Why did volunteers four years ago spend many hours discussing CALM proposals for entrance and entry statements only to have it all put on ice. It now resurfaces amongst other intentions under Wildlife Centre.	Planning to upgrade the entrance to the Wildlife Centre is still considered appropriate. Any future planning for the Wildlife Centre will be undertaken in consultation with key stakeholders.	No	2B
5	2	What facilities are needed in North Lake Parkland? What is your agenda of taking over this parkland? Why will there be provision of new facilities such as restaurant, café or kiosk, upgraded playground and a walk circuit around Industrial Lake?	The upgrading of facilities at North Lake Parklands (Popeye Lake) will focus on upgrading existing facilities such as the play equipment and pedestrian and cyclist access. The potential for new facilities such as a restaurant, café or kiosk does exist however, priority will be placed on improving existing passive recreation facilities. Should any commercial concession be considered at the site in the future, consultation will occur with stakeholder groups.	No	2D
6	1	Currently along the section of lake near Waterside, there is an almost impenetrable barrier of high trees along the edge of the lake. These not only impair the vistas of the lake, but hinder other recreational use of the lake along its edges. It is suggested some of the high trees be thinned out at intervals and replaced with suitable native shrubs.	The taller trees provide valuable wildlife habitat. Current strategies are considered appropriate.	No	2H
7	1	Glendalough Open Space – second sentence, surely these are not consistent with park values and objectives.	Regional parks can contain areas providing active recreation opportunities. Given resource constraints however, the proposal to develop active recreation facilities has been removed from the plan.	Yes	ID
8	1	Para 1, sentence 1 - Reword to: "The objective is to provide and manage a range of quality recreation sites and facilities that allow for a diversity of passive recreation opportunities without conflicting with other Park values."	Objective revised.	Yes	ID
9	1	Para 4, sentence 3 - Reword to: "However, due to the historical use of these facilities, this plan will allow for their continued operation within the Park in the short term."	The existing tennis courts are considered appropriate in the Park.	No	2D

COMMENT NUMBER	NO. OF SUBS	SUMMARY OF COMMENT	DISCUSSION / ACTION TAKEN	PLAN AMENDED	CRITERIA
10	1	Wildlife Centre - Sentence 1: There is no need to improve pedestrian access – that is more than adequate at the moment, with access from the paths around the lake and the driveway into the Centre, however there is a need to improve vehicular access. Rephrase sentence 1: “The site plan for the area surrounding the Wildlife Centre will concentrate on improving vehicular access. However, there should still be a means of closing off vehicular access, such as by the present gate, when the Wildlife Centre is closed.”	Text amended.	Yes	1E
11	1	Sentence 3 - Improved pedestrian access will lead to more people using the site, which will conflict with the present use of the site by school children for environmental education.	Existing text is considered best option.	No	2D
12	1	Strategies 1,2 & 3 – All reference to the City in the future management of Perth Horse and Pony Club should be deleted in keeping with the Council's resolution not to accept vesting of this area.	Noted. The management plan indicates that further planning is required in relation to the Perth Horse and Pony Club site.	No	2G
29 - Park Access and Circulation					
1	1	A cycle/walk-path that followed the circumference of the entire lake would be really worthwhile.	Supports the plan.	No	2A
2	1	There used to be a walkway through the reeds at the northern end of Floreat Waters. This used to come to a viewing platform and then the pathway would continue. Could this viewing platform be rebuilt?	The Recreation Masterplan indicates a walk path and observation site at the north of Floreat Waters.	No	2A
3	1	There is another wonderful viewing platform which is part of the loop-walk through the reeds near the Wildlife Centre. Could the cutting back of reeds in front of the viewing platform be done on a regular (annual) basis?	Noted. Maintenance programs have been established and address weed control and maintenance of boardwalks.	No	2C
4	1	Page 38 – There appears to be an existing pedestrian walk trail and proposal for a Dual Use Path. Are there going to be two walkways? Consideration should be given to the safety of a Dual Use Path so that it is not too close to traffic as well as having the benefit of being away from the noise, fumes and having the pleasant ambience away from a bitumen road.	Noted. The Recreation Masterplan shows the indicative locations of existing and proposed walk trails and dual use paths. Where possible walk trails and Dual Use Paths will be separated.	No	2D
5	1	Figure 9 would appear to indicate a walk path and a dual use path around Floreat Waters Lake. At Page 36 the report states that, where possible separate pathways for pedestrians and cyclists will be provided. Upgrading the current limestone walkway to a dual use path will achieve the desired outcome and have minimum impact on the enjoyment of the area.	Separation of walk trails and dual use paths is the preferred option.	No	2D

COMMENT NUMBER	NO. OF SUBS	SUMMARY OF COMMENT	DISCUSSION / ACTION TAKEN	PLAN AMENDED	CRITERIA
6	7	Would you be able to put a footpath between Harbourne Street and Jon Sanders Drive?	Beyond the boundary of the regional park. This matter should be directed to the City of Stirling.	No	2C
7	1	This requires rewriting because of its inaccuracies and omissions. It also mentions an incomplete or not approved additional Recreation Masterplan. This draft is already preempted by the disappearance of non-maintained assets around the lake.	Noted. Recreation Masterplan appears as Figure 9 in the management plan.	No	2D
8	2	The current rough gravel pedestrian cycle paths, are sometimes submerged in parts during rain, and not easy to transverse at any time, be replaced with suitable paved paths. This also occurs in summer from sprinklers.	Maintenance issues noted noted. During implementation of the Recreation Masterplan exact path alignments and surfaces will be considered.	No	2D
9	1	Concerned that it is proposed to remove the car parks at Maurice Hamer Park (north) and Moondine Drive Parkland will create traffic congestion and hazards in the area.	Noted. The car parks at Moondine Drive Parkland will be retained. The car park in the North of Floreat Waters does not meet relevant standards and should be removed.	Yes	1C
10	1	There has been a tendency and possibly a need to place the treated wire fences at the roadside curb of most grassy areas to prevent vehicle access. In Floreat Waters, we have not had a problem with vehicles on the grass reserve between Lakeside Road and the Lake. Therefore there is no need whatsoever to install a fence.	Noted. No fence is proposed along Lakeside Drive in the draft management plan.	No	2C
11	2	Cycle and Pedestrian Access - Para 3: If the dual use path is to follow the existing limestone walk trails around the lake, then disagree with the path system being upgraded. This will lead to conflict with walkers. It will also make it more difficult to safely walk students from one locality to another. However, if the dual paths are to be developed further away from the edge of the lake's edge and in addition to the walk trails, as indicated in sentence three, then these impacts will be minimised.	Supports the plan. The Recreation Masterplan indicates separate walk trails and dual use paths where possible.	No	2A
12	1	Disagree with the proposal to construct a cycle path next to Lakeside Road. The correct place to establish it is next to the walking path close to the foreshore of the lake.	The Recreation Masterplan outlines the indicative location of paths. In this location a separate dual use path and walk trail is considered the most appropriate option. The exact alignment of the paths will be determined prior to construction.	No	2D
13	1	Cycle and Pedestrian Access – 3 rd para. 1 st sentence should be reworded to "It is planned.....for both pedestrians and cyclists."	Text amended.	Yes	1E
14	1	Cycle and Pedestrian Access – 3 rd para, 2 nd sentence, query the use of 'Where possible'.	The Recreation Masterplan illustrates the indicative alignments of pathways. Separation of dual use paths and walk trails is the preferred option.	No	2D

COMMENT NUMBER	NO. OF SUBS	SUMMARY OF COMMENT	DISCUSSION / ACTION TAKEN	PLAN AMENDED	CRITERIA
15	1	Horses and Other Animals - Agree that riding horses in the Park could create conflict with the Park's values and its users. Disagree that horse riding should be permitted at the Perth Horse and Pony Club. Believe that horses and horse riding are not appropriate animals or activities, respectively, in the Park.	The future use of the site and the appropriateness of equestrian activities requires further planning and discussion between the Perth Horse and Pony Club (Inc.), the City of Stirling (as the lessor, owner of improvements on-site and agency that currently manages Reserve 28763) and the Department of Conservation and Land Management.	Yes	1C
16	1	The Perth Radio Sailing Club are seeking approval to utilise parts of the Herdsman Lake area known as Floreat Lakes and Floreat Waters for the activity of sailing and racing small radio controlled wind driven yachts. The areas would be used on an infrequent basis as alternatives to our home waters and Jackadder Lake (Woodlands) when the lake becomes unstable due to low water levels.	The draft management plan (page 39) Strategy 2 recommended prohibiting the use of recreational watercraft (including model boats) in the wetland and waterbodies of the park. The current strategy is considered appropriate.	No	2D
17	1	With regard to bicycles, if they are permitted within the Park, this should only be on areas of the Park well away from the Lake's edge so that ducks, ducklings and small turtles are not harmed. Further the paths on which the bicycles may be permitted will need to be different from those used by pedestrians.	Supports the plan. Separation of dual use paths and walk trails is the preferred option.	No	2A
		30 - Signs <i>No Comments</i>			
		31 - Visitor Safety <i>No Comments</i>			
		32 - Utilities and Park Services			
1	1	Some of these matters should be of no concern to CALM, but the Water Corporation's Environmental Officers. What are they being employed for?	Noted.	No	2B
2	1	It is doubtful whether the continuing use of Herbicides as a management tool is in line with your objectives of what is termed Services and Utilities.	Noted.	No	2B
3	1	Do not consider the failed South East Sector proposal a service or utility but rather one of the many cases of not taking any notice.	Noted.	No	2B
4	1	We cannot see roads and powerlines to be an issue in Herdsman Lake.	Noted.	No	2D

COMMENT NUMBER	NO. OF SUBS	SUMMARY OF COMMENT	DISCUSSION / ACTION TAKEN	PLAN AMENDED	CRITERIA
5	1	At present there are underground cables in the area, there is also no proposed works at this time. Perth One Call Service must be contacted and location details obtained prior to any excavation commencing in the future. Worksafe requirements must be observed when excavation work is undertaken in the vicinity of Western Power's assets. The cost of any changes to the existing (power) system, if required, will be the responsibility of the individual developer.	Noted.	No	2C
6	2	It is wrong to target the Gould Leagues private toilets for public use but spare the Ponyclub of opening their toilets to the public while having a children's playground nearby. Are you applying different standards here?	Noted. Plan Amended.	Yes	ID
7	1	Strategies are only general directions, so how does one need seven of them to deal with the chapters contents.	Number of strategies in the plan is considered appropriate.	No	2D
		E. COMMERCIAL CONCESSIONS			
		33 - Commercial Goal and Guiding Principles			
1	1	Page 44 – Query sentence 'Through the tendering process proponents of significant developments within the Park will be required to assess the environmental impacts of the proposed commercial use'.	Text amended. Proponents will be required to undertake an environmental review of the proposed development.	Yes	1E
2	1	Do not believe in the creation of any commercial activity around the lake. Believe the two are mutually exclusive in the sense that with the lake being kept in such a pristine and 'undeveloped' state this will attract clientele which does not look for commercial aspects. The only increase in human activity, which I would like to see around the lake, would be visitor numbers to the Wildlife centre.	Noted. Should any commercial concessions be considered, further public consultation will be undertaken.	No	2D
3	1	For fauna the Department requires 2 ½ pages consisting of superseded data. For vegetation, 1 ½ did it. For Commercial Concessions you deemed 3 pages as necessary. This nicely sums up your commitments. We do not agree with the accompanying 13 strategies.	The detail in the plan is considered necessary due to the administrative requirements for determining and managing suitable commercial concessions.	No	2D
4	1	Commercial Guiding Principle 1 - Sentence 3: Reword to: "Developments within the Park should only service visitor demands in keeping with Park values."	Noted. Addressed in the commercial goal.	No	2D
5	1	Commercial Guiding Principle 1 – Why even consider a restaurant or café?	A Café/kiosk or restaurant broadens the range of appropriate recreational opportunities within the Park and generates revenue which will be used to assist in the management of the Park.	No	2D

COMMENT NUMBER	NO. OF SUBS	SUMMARY OF COMMENT	DISCUSSION / ACTION TAKEN	PLAN AMENDED	CRITERIA
6	1	Commercial Guiding Principle 2 - Sentence 4: Reword to: "Through the tendering process proponents of significant developments within the Park will be required to conduct a valid ERP for the proposed commercial use, submit a PER which is advertised for community scrutiny for a minimum of three months and meet all environmental requirements for the site."	The Environmental Protection Authority and Department of Environment will determine the level of environmental review on an individual project basis.	No	2D
7	1	Commercial Guiding Principle 3 - Sentence 4: Reword to: "All development applications will be assessed in terms of their impact on Park environmental and conservation values."	Already addressed in Commercial Guiding Principle Number 2.	No	2D
		34 - Leases and Licences			
1	1	Page 45 – Café, Kiosk or Restaurant: Paragraph starting 'For the development of a café or restaurant to proceed, expressions of interest would be sought through ...' should end in 'a public competitive process.'	Text amended.	Yes	1E
2	1	Page 45, column 1 – This has been the aim of the WA Gould League since the initial discussions in 1975.	Noted.	No	2B
3	1	Page 45 – The World Wide Fund for Nature used the WA Gould League to get the area. It left the Gould League with a heavy debit. The WA Government and the Education Department came to the aid of the Gould League.	Noted.	No	2B
4	1	Wildlife Centre – Gould League of WA - Para 2, sentence 1: Reword to: "The site currently offers some visitor interpretive facilities, but there is scope to further develop these."	Text amended.	Yes	1E
5	1	Wildlife Centre – Gould League of WA - Para 2, sentence 2: Reword to: "Further scope exists to promote awareness of the Park through the Centre, for local, regional and international visitors."	Text amended.	Yes	1E
6	1	Wildlife Centre – Gould League of WA - Para 2, sentence 3: Reword to: "In addition to its current environmental education role for students, the opportunity exists to the Centre to be further developed as a research Centre attracting University and TAFE students, as well as the broader community."	Text amended.	Yes	1E
7	1	Wildlife Centre – Gould League of WA - Para 2, sentence 5: Reword to: "Information on the values of the Park combined with activities and programs to further develop and appreciate these values could also be extended."	Text amended.	Yes	1E

COMMENT NUMBER	NO. OF SUBS	SUMMARY OF COMMENT	DISCUSSION / ACTION TAKEN	PLAN AMENDED	CRITERIA
8	1	Perth Horse and Pony Club - Disagree that due to the historical nature of this use that continued horse riding should be allowed.	The future use of the site and the appropriateness of equestrian activities requires further planning and discussion between the Perth Horse and Pony Club (Inc.), the City of Stirling (as the lessor, owner of improvements on-site and agency that currently manages Reserve 28763) and the Department of Conservation and Land Management.	Yes	1C
9	1	Ice Cream Vans, Fast Food Outlets and Bicycle Hire - Strict litter minimisation requirements will need to be imposed on operators of the two first listed activities, as even without them currently being within the Park boundaries litter is a significant problem at the lake.	Text amended. Operators need to comply with local government health and building requirements.	Yes	1E
10	1	One Off Special Events - Sentence 4: Replace the word should by must in this sentence.	Text amended.	Yes	1E
11	7	Would like to see zoning of the small land area currently leased to CMS as a special use purpose for education. Request that the schools current lease arrangement for our Playground land, remain unchanged if the land is excised from the Park, as is proposed in the Management Plan. This land holds the school's playground and forms an essential part of the school curriculum. This wonderful and unique school would benefit enormously from the donation of the playground by the Council.	Noted. Future leasing or acquisition of the playground area is to be negotiated between the school and WAPC.	No	2C
12	1	Telstra Mobile Phone Telecommunications Tower - The concerns with the placement of the tower are: 1. Students visiting the Wildlife Centre, and staff working at the Centre are in the zone of maximum radiation from the tower. 2. The tower is used as a lookout, by birds such as ravens, to detect the whereabouts of nesting small birds, which are then predated by the ravens. As a result very few small are able to successfully breed in the area. Any means, which could prevent ravens using the tower, as a lookout would be beneficial.	Noted.	No	2C
13	1	Although commercial development has been taken out of the Vision for the Park, it remains as a goal of the plan, and there is a strong sense in which it sounds as though commercial activity will be actively sought, even for some things that have little to do with the primary values of the park. We do not believe it is appropriate for commercial development not directly related to the Park's primary values to be established on land managed by this Department or by the City of Stirling.	Noted. The consideration of any commercial concession will be in accordance with the commercial guiding principles and will involve further community consultation.	No	2D

COMMENT NUMBER	NO. OF SUBS	SUMMARY OF COMMENT	DISCUSSION / ACTION TAKEN	PLAN AMENDED	CRITERIA
14	1	Strategy 10 – All references to the City in future development plans of the Perth Horse and Pony Club should be deleted in accordance with Council's resolution not to accept vesting of this area.	The future use of the site and the appropriateness of equestrian activities requires further planning and discussion between the Perth Horse and Pony Club (Inc.), the City of Stirling (as the lessor, owner of improvements on-site and agency that currently manages Reserve 28763) and the Department of Conservation and Land Management.	Yes	1C
		35 - Mining and Extraction of Basic Raw Material			
1	1	Cannot express how strongly the objective is supported.	Supports the plan.	No	2A
2	1	Page 47 – Department of Minerals and Energy recent name change. The new name is the Department of Mineral and Petroleum Resources and is abbreviated as MPR.	Text amended.	Yes	1E
		F. RESEARCH AND MONITORING			
		36 - Research and Monitoring Goal			
1	1	If we do not fully understand what impact our actions will have on the park then how can we guarantee it's future. We should be looking to minimise human involvement around the lake until such a time as we fully understand the result of all our actions. Lake Herdsman has been able to maintain its natural beauty and biodiversity only because of limited past human involvement and any future management plan for the lake must continue to restrict development of any kind within the lake's boundaries.	Acknowledged, the first strategy in the management plan is to manage the Park for conservation and environmental enhancement and allow recreation and other uses of the Park to occur to the extent that they do not impair the values of the Park.	No	2D
		37 - Research and Monitoring			
1	1	Page 48 - Would like to see more precise hypothesis – or indicator based list with appropriate action linked in such monitoring initiatives. Statements such as "wetland health" are too vague and should be replaced by a more precise parameter.	Text amended. KPI's have been reviewed and amended.	Yes	1D
2	1	Page 48, Monitoring - Para 3, sentence 1: In the past, Murdoch University and community groups such as Habitat Herdsman and the WA Gould League have previously undertaken monitoring projects in the Park.	Text amended.	Yes	1E

COMMENT NUMBER	NO. OF SUBS	SUMMARY OF COMMENT	DISCUSSION / ACTION TAKEN	PLAN AMENDED	CRITERIA
3	1	Is the community now to help a part privatised public service's so called Key Performance Indicators? Two strategies have been given high priority in this context. One notices with astonishment that CALM Science has no role to play. The Community is expected to help the department's figures to look good. This is certainly implied in Strategy 2 according to which the Administration will continue to look for outside money. The similarity to the private sector, which historically has tried to externalise costs, is striking.	External sources of funding and community involvement will be sought to maximise monitoring effectiveness.	No	2D
4	1	Strategy 1 & 2 - City does not consider having any responsibility for undertaking environmental surveys and monitoring programmes. The exception to this is mosquito monitoring.	Text amended. The City of Stirling's acronym has been removed from these strategies.	Yes	IC
5	1	Strategy 3 - The coordination of community volunteer groups in research programmes is considered a responsibility of CALM.	Text amended. The City of Stirling's acronym has been removed from these strategies.	Yes	IC
		G. COMMUNITY RELATIONS			
		38 - Community Relations Goal			
		<i>No comments</i>			
		39 - Information, Interpretation and Education			
1	2	WWF, WA Gould League, WA Naturalist' Club, Birds Australia and WA Wildflower Society are interested in establishing a shared resource facility within the Herdsman Lake Regional Park. Believe that the establishment of such a facility would contribute to the vision outlined for the Park.	Supports the plan.	No	2A
2	1	Page 49, column 2 – Gives due credit to the WA Gould League. It has been and is an active and important group.	Supports the plan.	No	2A
3	1	Page 49 - Para 2, sentence 2: Reword to: "It provides an avenue to promote an appreciation and greater understanding of the natural environment and informs the public of attractions, facilities and recreation opportunities within the Park."	Text amended.	Yes	IE
4	1	Para 3 - Reorder the dot points to the sequence: Interpretation, Education, Information	Sequence used in plan was considered best option.	No	2D
5	1	Para 8, sentence 3: Reword to: "There is the opportunity to continue to conduct these school activities in conjunction with CALM's existing schools education program, including the CALM Bush Rangers Program."	Text amended.	Yes	IE

COMMENT NUMBER	NO. OF SUBS	SUMMARY OF COMMENT	DISCUSSION / ACTION TAKEN	PLAN AMENDED	CRITERIA
		<p>H. PLAN IMPLEMENTATION</p> <p>40 - Priorities, Funding and Staff</p> <p><i>No Comments</i></p> <p>41 - Community Involvement</p> <p>Page 52, column 1 – Very important</p> <p>42 - Term of the Plan</p> <p><i>No Comments</i></p> <p>43 - Performance Assessment</p> <p>Performance Audit Table</p>			
1	1	Visitors should not feed avian fauna with bread etc. This has led to the destruction of Lake Monger. Silver gulls will flood Herdsman Lake if indiscriminate feeding is allowed.	Supports the plan.	No	2A
2	1	Table 3 – Under wetland health, heavy metal concentrations should be inserted there, as stormwater carries very large loads into the lake. Heavy metals interfere with and are toxic to most life forms.	Noted. The feeding of birds in the Park is discouraged (addressed in Section 16 – Fauna.)	No	2D
3	1	Table 3 – Wetland Health, with regard to suggested timeline, could be waiting a long time.	Water quality indicators will be considered in the catchment management plan and overall water management plan, which are strategies of the management plan (Section 14).	No	2C
4	1	Table 3 – Wetland Health, with regard to suggested timeline, could be waiting a long time.	Text amended. The timeline has been amended to read: "To be prepared within two years of the release of the final management plan."	Yes	1C
5	1	Table 3 - Key Performance Indicators-Row 1 Dot point 3 – include frogs as an indicator of diversity.	Water quality indicators will be considered in the catchment management plan and overall water management plan, which are strategies of the management plan (Section 14).	No	2C
5	1	Table 3 - Key Management Strategies-Row 1, Dot point 5 – don't you mean high water level for the lake not low water level – we are talking about winter – believe that 7.0 AHD is too low and that this figure should be 7.4 AHD.	Text amended.	Yes	1E

COMMENT NUMBER	NO. OF SUBS	SUMMARY OF COMMENT	DISCUSSION / ACTION TAKEN	PLAN AMENDED	CRITERIA
6	1	7m AHD current with winter water level – current levels are much to high.	Text amended.	Yes	1E
7	1	Table 3 – 2 nd row, Key Management Targets – The decline in transequatorial waders has already occurred.	Noted.	No	2D
8	1	Table 3 – 2 nd row, Key Management Strategies – Add sentence “Compare current and future data with historical records.”	Text amended.	Yes	1C
9	1	Table 3, Row 2 - Believe that frog and reptile numbers should also be monitored, as indicators of environmental health, in conjunction with spiders.	The KPI table has been reviewed. KPIs do not cover all objectives (or in this case all fauna) but have been selected to provide a strategic indication of how well the values of the Park are being maintained.	No	2D
10	1	Table 3, Row 4 - Change the Key Performance Indicator to read: “Visitor satisfaction with conservation values at the Park and visitor numbers.”	Sustainable visitor use is addressed in the key objective.	No	2D
11	1	Table 3, Row 4 - Change the Key Management Target to read: “Maintain an overall trend of positive visitor satisfaction with environmental and conservation values at the Park.”	Sustainable visitor use is addressed in the key objective.	No	2D
12	1	Include a key performance indicator and associated Key Management Targets, etc relating to Integrated Catchment Management for the Herdsman Lake Catchment.	Text amended.	Yes	1C
13	1	Problem of water levels and bird species diversity recurs on page 49 under “ Plan Implementation”. Further, and most worrying of all, is dot points under “Key Management Strategy”. Water and Rivers Commission data show that the low water level has never been above 7.0 m AHD since the Main Drain was constructed. If this means, as it seems to, that future summer low water levels will be allowed to reach current winter water levels the result would be disastrous for the biodiversity and overall health of the Lake. The Lake now has deep dredged moats and artificial wetlands within it, and these will retain permanent water throughout the year. Thus, there is not even a cosmetic or aesthetic reason for maintaining high water levels in summer. There is however, very strong ecological reasons to ensure that a substantial part of the Lake be allowed to dry throughout the summer, so that all surfaces outside the drains, moats and artificial ponds are largely dry before the advent of winter rains. This Management Plan should prescribe a regime of fluctuating high and low water levels, for winter and summer respectively, that are needed to meet biodiversity objectives. If you consider that this is not possible because of insufficient information, the prescription of water levels should be made the primary objective of the overall water management plan proposed on page 18.	The KPI table has been reviewed. The management of water levels for the protection of wildlife habitat and other conservation values will be considered in the overall water management plan for Herdsman Lake.	Yes	1C

APPENDIX I - SUBMITTERS TO THE DRAFT MANAGEMENT PLAN

Individuals

Mark Ballesteros
Nancy Ballesteros
Daniel Belotti
Derek Bond
Andrew Burbidge
Carmela Corvia
Dr Elizabeth Constable (Member for Churchlands)
Des Griffiths
S.A Griffiths & H.A O'Grady (x2)
Wendy Harmon
B. Hay
BTK Hutchings
Halina Kobryn
D. Sieber
Shane Sivett
Bronwyn Towler
Anonymous (x1)

Community Organisations

Council of Owners of Waterside (Chairman – Trevor Greenwood)
Habitat Herdsman (O. Mueller)
Herdsman Lake Wildlife Centre (Centre Manager – Paul Reiffer)
Perth Radio Sailing Club
Western Australian Gould League
Western Australian Naturalists' Club

Government Agencies

Aboriginal Affairs Department
City of Stirling
Department of Conservation and Land Management (Park Policy and Tourism)
Department of Conservation and Land Management (WA Threatened Species & Communities Unit)
Department of Land Administration
Department of Minerals and Energy
Sport and Recreation WA
Water and Rivers Commission
Western Power

Educational Institutions

Chrysalis Montessori School