

A guide to managing and restoring wetlands in Western Australia

Funding, training and resources

In Chapter 1: **Planning for wetland management**


Version 1



Australian Government



Department of
Environment and Conservation

Our environment, our future 

Introduction to the guide

Western Australia's unique and diverse wetlands are rich in ecological and cultural values and form an integral part of the natural environment of the state. *A guide to managing and restoring wetlands in Western Australia* (the guide) provides information about the nature of WA's wetlands, and practical guidance on how to manage and restore them for nature conservation.

The focus of the guide is natural 'standing' wetlands that retain conservation value. Wetlands not addressed in this guide include waterways, estuaries, tidal and artificial wetlands.

The guide consists of multiple topics within five chapters. These topics are available in PDF format free of charge from the Western Australian Department of Environment and Conservation (DEC) website at www.dec.wa.gov.au/wetlandsguide.

The guide is a DEC initiative. Topics of the guide have predominantly been prepared by the department's Wetlands Section with input from reviewers and contributors from a wide range of fields and sectors. Through the guide and other initiatives, DEC seeks to assist individuals, groups and organisations to manage the state's wetlands for nature conservation.

The development of the guide has received funding from the Australian Government, the Government of Western Australia, DEC and the Department of Planning. It has received the support of the Western Australian Wetlands Coordinating Committee, the state's peak wetland conservation policy coordinating body.

For more information about the guide, including scope, purpose and target audience, please refer to the topic 'Introduction to the guide'.

DEC welcomes your feedback and suggestions on the guide. A publication feedback form is available from the DEC website at www.dec.wa.gov.au/wetlandsguide.

Contents of the guide

Introduction

Introduction to the guide

Chapter 1: Planning for wetland management

Wetland management planning

Funding, training and resources

Chapter 2: Understanding wetlands

Wetland hydrology

Conditions in wetland waters

Wetland ecology

Wetland vegetation and flora

Chapter 3: Managing wetlands

Managing hydrology

Wetland weeds

Water quality

Secondary salinity

Phytophthora dieback

Managing wetland vegetation

Nuisance midges and mosquitoes

Introduced and nuisance animals

Livestock

Chapter 4: Monitoring wetlands

Monitoring wetlands

Chapter 5: Protecting wetlands

Roles and responsibilities

Legislation and policy

These topics are available in PDF format free of charge from the DEC website at www.dec.wa.gov.au/wetlandsguide.

'Funding, training and resources' topic

Acknowledgments

Authors: Christina Denton, DEC

Reviewers and/contributors

The following people have been consulted in the development of this topic:

Christina Mykytiuk, DEC Jennifer Higbid, DEC

Tracey Bell, DEC Ray Pybus, DEC

Dr Ken Atkins, DEC

The valuable contribution of each of these people, and people who have contributed their photos, is gratefully acknowledged.

Project manager: Justine Lawn, DEC

Publications management: Joanna Moore

Graphic design: Stuart Ridgway, Stuart Ridgway Design

Recommended reference

When referring to the guide in its entirety, the recommended reference is: Department of Environment and Conservation (2012). *A guide to managing and restoring wetlands in Western Australia*. Department of Environment and Conservation, Perth, Western Australia.

When specific reference is made to this topic, the recommended reference is: Department of Environment and Conservation (2012). 'Funding, training and resources', in *A guide to managing and restoring wetlands in Western Australia*, Prepared by C Denton, Department of Environment and Conservation, Perth, Western Australia.

Disclaimer

While every effort has been made to ensure that the information contained in this publication is correct, the information is only provided as a guide to management and restoration activities. DEC does not guarantee, and accepts no liability whatsoever arising from, or connected to, the accuracy, reliability, currency or completeness of any material contained in this guide. Since sections of this topic were drafted, new information that may have come to light between the completion date and publication date may not have been captured in this topic.

Contents

Introduction	1
How to use this topic	1
Funding	1
Funding programs	3
Funding directories	10
Labour programs	11
Land sale, purchase or donation	12
Legal protection	14
Management agreements	16
Training	17
Resources	21
Conferences and other activities	21
DEC Information Centre	21
General contacts and sources of advice	22
Technical advice and expertise	27
Wetland mapping	28
Online data sources with information on WA's wetlands	30
Websites and newsletters	31

INTRODUCTION

This topic provides information on funding, training and resources related to wetland management and restoration.

Funding and training programs change in response to government and non-government priorities and demand, and new resources regularly become available. For this reason, the information in this topic may be updated at regular intervals. If you know of funding, training or resources relevant to WA wetlands that should be listed in this topic, or changed details for listed programs, we would appreciate you letting us know by emailing us at wetlands@dec.wa.gov.au or via the publication feedback form, available from the DEC website at www.dec.wa.gov.au/wetlandsguide.

Users should check the currency of program information before planning on accessing support from the programs featured in this topic.

HOW TO USE THIS TOPIC

This topic has been arranged in three sections:

1. funding
2. training
3. resources

- For information on the roles and responsibilities of stakeholders, including government and non-government organisations, see the topic 'Roles and responsibilities' in Chapter 5.

FUNDING

This section provides an overview of the main funding opportunities for wetland management and restoration activities. The list is not exhaustive and individuals will need to investigate each option further for more details. There are various funding and grant 'search engines' available on the internet and the most relevant to wetlands are listed in this section.

Funding opportunities are listed under the following headings:

- funding programs
- funding directories
- labour programs
- land sale, purchase or donation
- legal protection
- management agreements

Funding programs

There are many funding programs available for a range of environmental projects and activities. The following funding programs are useful for sourcing funds for wetland management activities.



Figure 1. Some of the sites and activities funded by DEC's Healthy Wetland Habitats program. Photos – (top) A Fairs/DEC, (below) A and M Elliott.

Table 1. Funding programs available in Western Australia

Funding program	Funding target	What the program funds	How much funding is available	Funding closing date	For further information	Geographic spread
Biodiversity fund, Australian Government	Land managers of public and private land	Revegetation, weed and introduced animal control, and protecting and managing high conservation areas			www.environment.gov.au/cleanenergyfuture/biodiversity-fund/index.html	National (round two: in WA, south-west and urban waterways and coastal environments)
Busselton Biodiversity Bids, Shire of Busselton	Organisations	Services and activities that deliver environmental benefit	Up to \$50,000		www.busselton.wa.gov.au	Shire of Busselton
Busselton Biodiversity Incentives Strategy, Shire of Busselton	Private landholders	Subdivision incentives and rate rebates	Rate rebates of \$250–\$1,500 annually	Ongoing	Shire of Busselton (08) 9781 0444 www.busselton.wa.gov.au/services/environmental_planning/biodiversity	Shire of Busselton
Caring for our Country (Cfoc), Australian Government	Non-government organisations Landcare groups Community groups State and local government Industry Business	Priority targets are identified for each financial year Provides funding for a broad range of sustainable land management and environmental protection work	Over \$2 billion in total funding between 2008–2013. The size of the grants range from \$30,000–\$600,000	Varies	Caring for our Country Information line 1800 552 008 www.nrm.gov.au/funding	National
Community Funding Program, Serpentine Jarrahdale Shire and Byford and Districts Branch of Bendigo Bank®	Community groups	Project funding such as seed funding for new groups, environmental restoration or facility upgrades	Up to \$1,500		Community Development Officer 9526 1137 www.sjshire.wa.gov.au/grant-funding/	Shire of Serpentine Jarrahdale
Community Grants Program, City of Rockingham	Not for profit groups and community organisations	Environmental and conservation initiatives	\$500–\$2000	Varies	City of Rockingham (08) 9528 0333 www.rockingham.wa.gov.au/leisure-and-recreation/Grants-and-awards/Community-grants.aspx	City of Rockingham
Community Grants, State NRM Program	Catchment and community groups, industry groups, not for profit organisations, local government authorities and education institutions	On-ground natural resource management action at a local level	In 2012, grants of \$10,000–\$50,000 were provided from funding of \$3 million	Varies	State NRM Office www.nrm.wa.gov.au/grants/state-nrm-program.aspx	State-wide
Community Sponsorship Program, City of Gosnells	Conservation groups and community organisations	Environmental works such as weed control, educational displays, minor equipment and volunteer training and development	Up to \$5,500	March 2013	barmstrong@gosnells.wa.gov.au www.gosnells.wa.gov.au/scripts/viewoverview_contact.asp?NID=12657	City of Gosnells
Conservation Zone Rate Rebate, Shire of Serpentine Jarrahdale	Landowners with areas of high conservation value	Reward landowners who protect biodiversity values in bushland and wetland areas	Substantial reductions in shire rates	Varies	Environmental Officer at the Shire of Serpentine Jarrahdale (08) 9526 1111 www.sjshire.wa.gov.au/biodiversity/	Shire of Serpentine Jarrahdale

Funding program	Funding target	What the program funds	How much funding is available	Funding closing date	For further information	Geographic spread
Environmental Community Grants, the Minister for Environment	Private landholders Community groups Conservation/environmental organisations	Biodiversity conservation Sustainable catchment management Protection of high-value areas	Varies, \$1.6 million total in 2012	Varies	Environmental Community Grants Coordinator, DEC (08) 9442 0300 grants@dec.wa.gov.au www.dec.wa.gov.au/ecg	State-wide
Gordon Reid Conservation of Natural Heritage Grant (Lotterywest)	Not for profit organisations and local government authorities	Conservation of the state's natural habitats and biodiversity Revegetation activities Research projects	Varies	November	(08) 9340 5270 www.lotterywest.wa.gov.au/grants/grant-types/heritage-and-conservation/natural-heritage	State-wide
Grants to Voluntary Environment and Sustainability and Heritage Organisations (GVESH), Australian Government	Community based environment and heritage organisations	Conservation and protection of Australia's natural environment and historic heritage	\$1.3 million total over the course of the program	Varies	GVEHO Program Team (02) 6274 2422 gveho@environment.gov.au www.environment.gov.au/about/programs/gveho/index.html	National
Healthy Habitats, Shire of Serpentine-Jarrahdale	Landowners	Natural areas of conservation value		Ongoing	Environmental Officer at the Shire of Serpentine-Jarrahdale (08) 9526 1111 www.sjshire.wa.gov.au/biodiversity/	Shire of Serpentine-Jarrahdale
Healthy Wetland Habitats, DEC	Landholders	Technical and financial support Assistance with wetland management plans Activities such as fencing and weed control	Up to \$10,000	Ongoing	Healthy Wetland Habitats Coordinator (08) 9219 8788 www.dec.wa.gov.au/hwh hwh@dec.wa.gov.au	Swan Coastal Plain (Perth and surrounds, from Jurien Bay – Dunsborough)
Landcare Community Grants	Landcare groups Coastcare groups	Projects aimed at improving the environment			www.landcareonline.com/funding_opportunity_details.asp?fo_id=9 Some ad hoc projects funded via DAFWA: Natalie Moore (08) 9368 3166 natalie.moore@agric.wa.gov.au.	National
Landowner Biodiversity Conservation Grants, City of Cockburn	Cockburn landowners with property in the Rural, Rural Living and the Resource Zones	Conservation of natural wetland areas on private property	Up to \$3,000	Close 31 October each year	Environmental Services Section (08) 9411 3444 www.cockburn.wa.gov.au/Council_Services/Environment/Grants_and_Subsidies/default.asp	City of Cockburn

Funding program	Funding target	What the program funds	How much funding is available	Funding closing date	For further information	Geographic spread
Nature Conservation Covenant Program, DEC	Private landowners	Permanent protection of bushland with high nature conservation values through the placement of a legally binding covenant on their land title. Administration, survey, legal and covenant registration costs Fencing and other management costs Eligibility for funding or rate relief may apply on a case by case basis through other programs	Case-by-case basis Up to \$500 to cover the owner's reasonable independent legal costs Up to \$10,000 for initial implementation of management actions	Ongoing	Nature Conservation Covenant Program Coordinator (08) 9334 0477 www.dec.wa.gov.au/management-and-protection/covenant-on-other-lands/covenant-program.html	State-wide
Strategic Priority Project Grants, State NRM Program	Regional NRM groups, state government agencies and the Western Australian Local Government Association	Projects that address State NRM Program investment priorities	\$10-\$15 million in total	Varies	State NRM Office www.nrm.wa.gov.au/grants/state-nrm-program.aspx	State-wide
Swan Alcoa Landcare Program (SALP), Perth Region NRM Inc	Community groups and local governments working with community groups within the Swan and Canning catchments	On-ground works to protect surface and groundwater and biodiversity			Perth Region NRM (08) 9374 3333 enquiries@perthregionnrm.com www.perthregionnrm.com/pr-nrm-programs/swan-river-trust-alcoa-landcare-program.aspx	The catchments of the Swan and Canning Rivers
Water grants and funding, Australian Government	Action on climate change; wise water use; securing water supplies; healthy rivers and waterways	Varies	Varies	Varies	www.environment.gov.au/water/programs/index.html	National

Funding directories

There are many funding directories and websites providing details of funding for a range of environmental projects and activities. The following are links to some of the most comprehensive grant directories and websites that can be used to identify funding and grants programs for wetland protection and management activities.

Table 2. Funding directories useful for sourcing funds for wetland management.

Funding directory	Directory provider	Contact
DAFF grants and assistance	Department of Agriculture, Fisheries and Forestry (DAFF)	www.daff.gov.au/about/current-grants
DSEWCaP grants and funding	Department of Sustainability, Environment, Water, Population and Communities (DSEWCaP)	www.environment.gov.au/about/programs/index.html
EasyGrants newsletter	Our Community (note: there is a subscription fee)	www.ourcommunity.com.au/funding/funding_main.jsp
Grants Directory	Department of Local Government and Regional Development	http://grantsdirectory.dlg.wa.gov.au www.rdl.wa.gov.au/grantandfunding/FundingApplications/Pages/default.aspx
GrantsLINK	Department of Regional Australia, Local Government, Arts and Sport	http://grants.myregion.gov.au
Guide to Community Grants	Parliament of Australia Parliamentary Library	www.aph.gov.au/About_Parliament/Parliamentary_Departments/Parliamentary_Library/Browse_by_Topic/community
WA Government	Government of Western Australia	http://wa.gov.au/information-about/wa-government/awards-grants-rebates

Labour programs

There are a variety of labour programs that can provide private landowners and local governments with labour, tools and other resources required to undertake bushland and wetland management activities.

Table 3. Labour programs available in Western Australia

Labour program	Who is targeted	What the program provides	For further information	Geographic Spread
Better Earth, Conservation Volunteers Australia	Community groups Park rangers Landcare coordinators Environmental officers Park maintenance staff	Provides a managed volunteer task force under the supervision of a fully trained team leader.	Free call 1800 032 501 (08) 9335 2777 perth@conservationvolunteers.com.au www.conservationvolunteers.com.au	State-wide
Earth Assist, Conservation Volunteers Australia		Supervised volunteering of students in years 10 to 12	(08) 9335 2777 perth@conservationvolunteers.com.au www.conservationvolunteers.com.au/about-us/our-partnerships/rio-tinto-earth-assist	State-wide
Employment Services, Green Skills Inc (Ecojobs)	Environmental projects	Provides skilled environmental personnel for natural resource management contracts and paid casual employment.	Annabelle Newbury (08) 9360 6667 anewbury@greenskills.org.au ecojobs@greenskills.org.au www.greenskills.org.au	Perth metropolitan area South Coast NRM Region
Green Corps, Greening Australia WA	Resource management organisations Catchment groups Indigenous organisations/corporations Local councils and shires	Greening Australia delivers the national Green Corps training initiative for the Federal Government's Department of Education, Employment and Workplace Relations (DEEWR).	Claire Hudson (08) 9335 0120, (08) 6488 6699 chudson@gawa.org.au	State-wide rural and remote areas (excluding Rangelands NRM Region)

Land sale, purchase or donation

For some private landholders, managing bushland on their property is a difficult and/or unwanted task. For these landowners, selling their bushland is an attractive alternative. There are a number of programs operating in WA that can facilitate the sale of bushland to conservation-minded members of the public. In some circumstances, government agencies also have funding to purchase bushland considered to be of high conservation value. For some landholders, the option of donating bushland to an organisation is also attractive, particularly if there is an economic incentive to do so (such as taxation benefits).

Table 4. Land sale, purchase and donation programs available to facilitate the sale of bushland for conservation management.

Program	Land sale, purchase or donation	Who is eligible/supported	What the program provides	For further information	Geographic Spread
Bush Heritage Australia	Land purchase	Private landowners Indigenous groups Pastoral lessees	Acquires and manages land of high conservation value and works in partnership with other landowners Manage fire, feral animals and weeds	1300 NATURE (1300 628 873) info@bushheritage.org.au www.bushheritage.org.au	State-wide
Bush Brokers: WWF-Australia, Real Estate Institute of Western Australia (REIWA), and the National Trust of Australia (WA)	Purchase and land sale	Landowners Conservation-minded groups and individuals	Aims to promote the sale of bushland as a real estate asset, and thus increase the financial and conservation values of bush blocks in south-west Western Australia to ensure their conservation and sustainable use	info@bushbrokers.com WWF Australia (08) 9387 6444 REIWA on (08) 9755 5123 Natural Heritage Manager at National Trust of Australia (WA) (08) 9321 6088 www.bushbrokers.com.au	State-wide
Government Conservation Land Purchase Program, Department of Environment and Conservation	Purchase of leasehold land Purchase of parcels of freehold remnant vegetation and wetlands in the south-west agricultural zone and Swan Coastal Plain	Landowners Pastoral lessees	Acquires land suitable for establishing a comprehensive, adequate and representative terrestrial conservation reserve system	DEC's Land Tenure Project Officer (08) 9219 8775	State-wide
Land purchasing, Gondwana Link	Land purchase Covenanting	Private landholders	Aims to restore the ecological connectivity between the forests and the semi-arid interior of south-western Australia by building a network of core wilderness areas linked by continuous belts of habitat surrounded by appropriate land uses.	Gondwana Link Director (08) 9842 0002. www.gondwanalink.org	South Coast NRM region
Land Purchasing/Tax Deductible Donation, Australian Wildlife Conservancy (AWC)	Land purchase Donation	Landowners Pastoral lessees	Aims to establish a national network of sanctuaries that protect threatened wildlife and ecosystems by acquiring and managing areas of high conservation significance. AWC's operations are funded primarily by donations.	Australian Wildlife Conservancy (08) 9380 9633 www.australianwildlife.org	State-wide

Program	Land sale, purchase or donation	Who is eligible/supported	What the program provides	For further information	Geographic Spread
Tax deductible donation, National Trust of Australia (WA)	Donation	Government Environmental organisations Private landowners	Land can be donated to the National Trust of Australia (WA) and the donor may be eligible for a tax deduction. Land may subsequently be vested in an approved environmental organisation or government conservation department to ensure it is managed for conservation.	National Trust WA Natural Heritage Manager (08) 9321 6088 www.naturalheritage.org.au	State-wide

Legal protection

As with management agreements, legal protection mechanisms will be more appealing to those landholders who are already conservation-minded. The following covenanting programs offer voluntary, legal agreements that can aid in the protection of bushland from future development. Most of the programs outlined below enable landholders to gain access to professional advice and financial incentives.

Table 5. Legal protection mechanisms available to facilitate the protection of bushland.

Program	Who is eligible/supported	What the program provides	For further information	Geographic Spread
Covenanting Program, National Trust of Australia (WA)	Private landowners	National Trust covenants can be tailored to meet the landowner's needs. They are legally binding and run with the title of the land in perpetuity, although fixed-term covenants are negotiable. Management advice through program. Eligibility for funding or rate relief may apply through other programs on a case by case basis.	National Trust WA Natural Heritage Manager (08) 9321 6088 www.nationaltrust.org.au/wa/natural-heritage	State-wide
Nature Conservation Covenant Program, DEC	Private landowners	Enables landowners to permanently protect their bushland with high nature conservation values through the placement of a legally binding covenant on their land title. Advice, stewardship support and management funding through program. Eligibility for other funding or rate relief programs may apply on a case by case basis.	Nature Conservation Covenant Program Coordinator (08) 9334 0477 www.dec.wa.gov.au/management-and-protection/conservation-other-lands/covenant-program.html	State-wide
Soil and Land Conservation Act Covenant, Department of Agriculture and Food	Private landowners	Two types of conservation covenants are available to protect land and can apply for an agreed period or in perpetuity.	Office of the Commissioner of Soil and Land Conservation at the Department of Agriculture and Food (08) 9368 3282 www.agric.wa.gov.au/PC_93234.html	State-wide

Management agreements

Management agreements will be most attractive to those landholders who are already conservation minded. These agreements often take the form of voluntary, legal or non-binding agreements that can aid in the protection of bushland from future development. Most programs enable landholders to gain access to professional advice and financial incentives that they would otherwise not be eligible to receive.

Table 6. Management agreements available to facilitate the protection of bushland.

Program	Who is eligible/ supported	What does the program provide	For further information	Geographic Spread
<i>Conservation and Land Management Act</i> Section 16, DEC	Private landowners or lessees	DEC may enter into an agreement with a landowner or lessee to manage the land under the CALM Act, usually where the land is adjacent to other land managed by DEC, and the agreement to manage is a means of more efficiently managing the combined land area. Management agreements might also be considered where DEC has a significant interest in the land, such as the occurrence of a significant area of vegetation, and the land owner or occupier was not wishing to manage those interests.	Contact your local DEC office; see Table 8. 'DEC Regional Headquarters' below.	State-wide
Healthy Wetland Habitats, DEC	Private landowners	Development of a voluntary management agreement for priority actions Technical and financial support	Healthy Wetland Habitats Coordinator on (08) 9219 8788 www.dec.wa.gov.au/hwh hwhf@dec.wa.gov.au	Jurien-Dunsborough, including Perth metropolitan area
Land for Wildlife, DEC	Private landowners	Assistance with management plans Technical support	Land for Wildlife Coordinator (08) 9334 0530 www.dec.wa.gov.au/landforwildlife	State-wide

TRAINING

This section provides an overview of the key wetland-related training opportunities available in WA. The following training programs range from general wetland management to rehabilitation techniques. Training programs also provide opportunities for information exchange and networking between like-minded people. Training opportunities have been listed in alphabetical order by the name of training provider. University courses are not listed.

Table 7. Training providers and training opportunities available to wetland managers.

*Please note contact names may change and therefore in some instances only position titles and contact details are given.

Host agency	Training opportunity	Target audience	Contact details
Cockburn Wetlands Education Centre	Occasional training and events can be provided.	Open	www.cockburnwetlands.org.au Contact person: Wetlands Officer 9417 8460
DEC and Southern Cross University	Annual acid sulfate soils professional short course, acid sulfate soil identification, assessment and management. Held in WA and other states.	Environmental consultants, urban developers, contractors, environmental scientists and conservationists, civil and environmental engineers and resource industry professionals	Chrsy Clay, Southern Cross University, Lismore NSW (02) 6620 3095 chrsy.clay@scu.edu.au; www.scu.edu.au/geoscience Acid sulfate soils section, DEC; Manager Stephen Wong (08) 9333 7576
DEC EcoEducation Program	Offers schools, teachers, students and their communities a variety of products and services to generate interest in and action for biodiversity conservation, sustainable living and practical ways to act on conservation issues.	School students	www.dec.wa.gov.au/eoeducation
DEC Land for Wildlife Program	Workshops or field days are arranged when registered landholders express an interest in learning more about a particular topic, for example 'native plant propagation' or 'acid sulfate soils'. These events are usually also open to the general public.	Open	Senior Project Officer (08) 9334 0427
DEC Ribbons of Blue Program	Provides teachers and their students with practical, hands-on learning experiences focussing on the sustainability of local waterways, wetlands and their ecosystems. Ribbons of Blue has loan equipment and sampling procedures to enable community groups to monitor wetland condition.	School students	Coordinator (08) 6467 5127 http://education.dec.wa.gov.au/ribbons-of-blue.html
DEC Urban Nature Program	Provides field days, workshops, training programs, technical advice and on-ground support for land managers working to protect, manage and restore bushland and wetland in DEC's Swan Region and beyond.	Open	(08) 9423 2900 urban.nature@dec.wa.gov.au
Eastern Metropolitan Regional Council's Bush Skills for the Hills	Bush Skills for the Hills is a series of free, hills-focused workshops for the community. The workshops are a mix of information and practical hands-on sessions designed to give participants both the 'why' and 'how' of managing land, bush and creeks in the hills environment.	Open	www.emrc.org.au/bush-skills-for-the-hills-workshops.html

Host agency	Training opportunity	Target audience	Contact details
Greening Australia WA	Greening Australia WA provides environmental education and training in seed collection and rehabilitation methods.		(08) 6488 6699 general@gawa.org.au
Green Skills Inc.	A Registered Training Organisation scoped to deliver: Conservation and Land Management Traineeships Certificates I – IV in Conservation & Land Management Bushland and wetland management workshops	Eligible applicants	State Manager Training (08) 9360 6667 www.greenskills.org.au anewbury@greenskills.org.au
National centre for groundwater research and training	Groundwater short courses, generalist courses and specialist courses offered in WA and other states	Professional development for NRM practitioners	To subscribe to training emails: cgs@groundwater.com.au (08) 8201 5632 www.groundwater.com.au
Piney Lakes Environmental Education Centre	Workshops and self-guided activities	Community and teacher professional development	www.melvillecity.com.au/pineylakes
Regional NRM organisations	Regional NRM organisations may hold various training events for landholders and community groups at various times.	Varies	Contact your local NRM Region office; see Table 9 below.
Rockingham Regional Environment Centre (Naregeburp)	Various educational opportunities including an education program for school students and school holiday program.	Varies	www.naregebup.org.au
Small landholder information service	Provides targeted learning events and resources on sustainable land management.	Landholders of small properties	small_landholder@agric.wa.gov.au www.agric.wa.gov.au/PC_92609.html
Sydney Olympic Park Authority	Wetland Education and Training (WET) Program is for wetland management and policy professionals and academics.		(02) 9714 7888 To subscribe: wetworkshop@sopa.nsw.gov.au
TAFE WA	Various units and courses such as Environmental Science - Management (Cert IV & Diploma).	Tertiary students	www.training.wa.gov.au/trainingcourses/detcms/portal/
WA Gould League	Environmental education based at Herdsman Lake Wildlife Centre.	Community and school students	www.wagouldleague.com.au
Wildflower Society of Western Australia	The Wildflower Society often conducts information talks for a small cost.	Open	http://members.ozemail.com.au/~wildflowers/events.htm

RESOURCES

This section provides an overview of key resources including:

- conferences and other activities
- DEC information centre
- general contacts and sources of advice
- technical advice
- wetland mapping
- online data sources with information about WA's wetlands
- websites and newsletters

Conferences and other activities

World Wetlands Day: World Wetlands Day is celebrated internationally each year on 2 February. It marks the anniversary of the signing of the Convention on Wetlands of International Importance (Ramsar Convention) in Ramsar, Iran, on 2 February 1971. In celebration of World Wetlands Day, state governments, community organisations and non-government organisations hold various activities across the country. For more information see www.environment.gov.au/water/topics/wetlands/world-wetlands-day/index.html and www.dec.wa.gov.au/management-and-protection/wetlands/internationally-recognized-wetlands-ramsar.html

Annual WA Wetland Management Conference: the Cockburn Wetlands Education Centre holds a conference annually on/close to 2 February each year, marking World Wetlands Day. The conference provides an annual opportunity to exchange information and ideas between wetland practitioners, with a focus on the latest developments about how to effectively manage and restore wetlands. For more information see <http://cockburnwetlandscentre.wordpress.com/>

DEC Information Centre

Visitors to DEC's Information Centre have access to a wide range of library resources suitable for professionals, teachers, students, community groups and the general public. These can be viewed at the DEC Information Centre, located at The Atrium, Level 4, 168 St Georges Terrace, Perth WA 6000 (08) 6467 5226. For more information, see

www.dec.wa.gov.au/about-us/about-dec/3369-information-centre.html.

To search the DEC Conservation Library catalogue, see <http://science.dec.wa.gov.au/conslib.php>. Loans and article copies are available through the interlibrary loan/document delivery service provided by institutional and public libraries.

General contacts and sources of advice

DEC regions

The following table contains the current contact details for DEC regional headquarters. People can be directed to the appropriate district office, work centre or DEC officer through these contacts. WA DEC Regions are shown in Figure 2. Note that these details can change, see www.dec.wa.gov.au/index.php?option=com_content&view=article&id=6518&Itemid=1563 for current listings.

Table 8. DEC regional headquarters and phone numbers

DEC regions and regional headquarters	Phone number
Atrium (central administration)	(08) 6467 5000
Goldfields Region, Kalgoorlie	(08) 9080 5555
Kimberley Region, Kununurra	(08) 9168 4200
Midwest Region, Geraldton	(08) 9921 5955
Pilbara Region, Karratha	(08) 9143 1488
South Coast Region, Albany	(08) 9842 4500
South West Region, Bunbury	(08) 9725 4300
Swan Region, Bentley	(08) 9423 2900
Warren Region, Manjimup	(08) 9771 7988
Wheatbelt Region, Narrogin	(08) 9881 9222



Figure 2. Boundaries of DEC regions and locations of regional headquarters.

Regional NRM organisations

Regional natural resource management (NRM) organisations coordinate a range of resources and information relevant to wetlands. Regional NRM organisations can provide assistance and details of relevant sub-regional organisations. They are outlined in Table 9 and the boundaries are shown in Figure 3.

Table 9. Regional NRM organisation contacts

NRM regional organisation	NRM Sub-regions
Northern Agricultural Catchments Council www.nacc.com.au (08) 9938 0100	Greenough Moore River West Midlands Yarra Yarra
Perth Region NRM www.perthregionnrm.com (08) 9374 3333	North North-East East South Coastal
Rangelands NRM WA www.rangelandswa.com.au (08) 9485 8930	Kimberley Pilbara Gascoyne-Murchison Goldfields-Nullarbor
South Coast Natural Resource Management Inc. www.southcoastnrm.com.au (08) 9845 8537	Albany Hinterland Esperance Mallee Esperance Sandplain Fitzgerald Biosphere Kent Frankland North Stirlings Pallinup
South West Catchments Council www.swccnrm.org.au (08) 9780 6193	Blackwood Cape to Cape Geographe Leschenault Peel-Harvey Warren
Wheatbelt NRM www.wheatbeltnrm.org.au (08) 9670 3100	Avon Lockhart Yilgarn

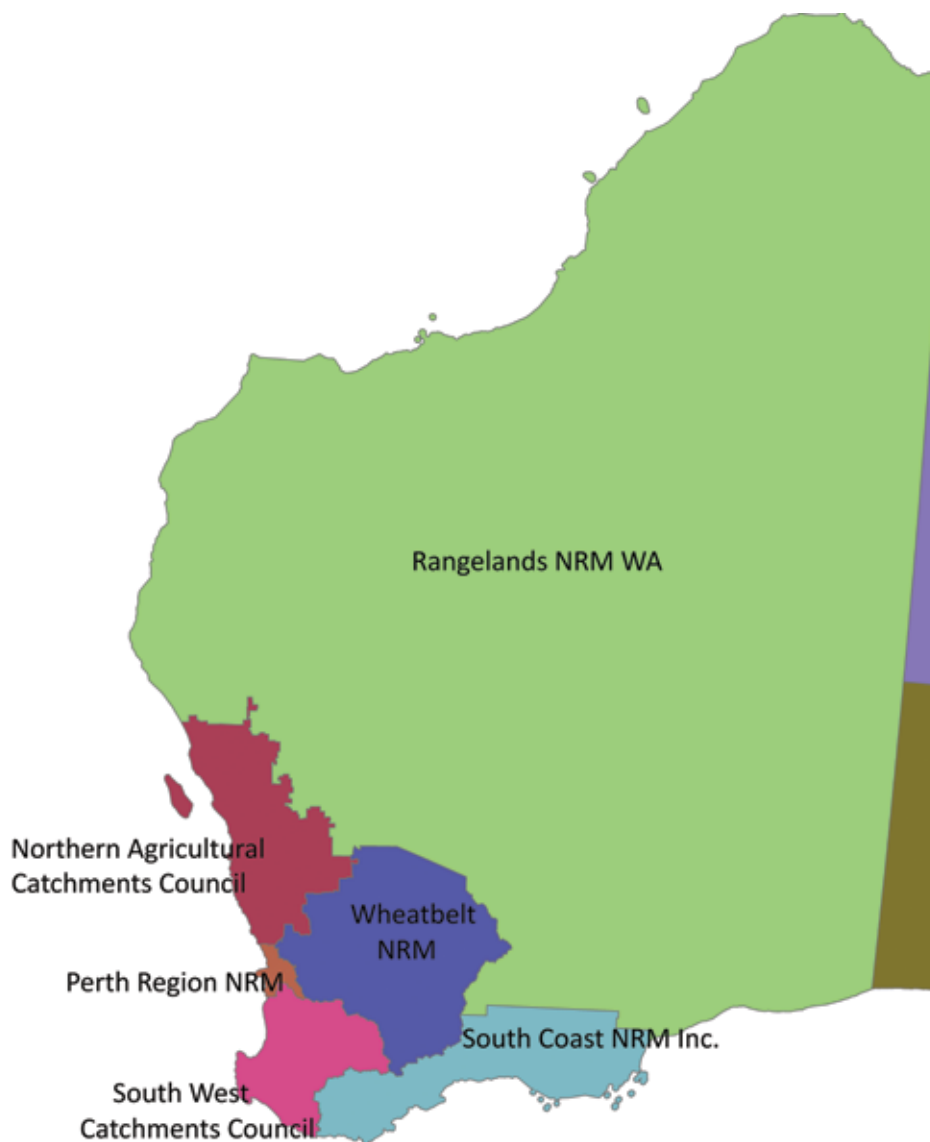


Figure 3. Regional NRM organisation boundaries

Local Government

The Western Australian Local Government Association (WALGA) is a non-government organisation that lobbies and negotiates on behalf of the 142 local governments of WA: <http://walga.asn.au>

It also provides a list of all of WA’s local government websites: <http://walga.asn.au/AboutLocalGovernment/CouncilWebsites.aspx>

Environment centres

Western Australia’s environmental education centres are very important and greatly increase community awareness and the capacity of individuals to make decisions and implement positive management actions for wetlands on their property, or the public properties they are involved in managing through Friends-of groups or other associations.

Education centres that incorporate nearby wetlands into their activities include:

- Canning River Eco Education Centre: www.canning.wa.gov.au
- Cockburn Wetlands Education Centre: www.cockburnwetlands.org.au
- Henderson Environment Centre: www.stirling.wa.gov.au
- Herdsman Lake Wildlife Centre (WA Gould League Inc): www.wagouldleague.com.au
- Naragebup Rockingham Environment Centre: www.naragebup.org.au
- Piney Lakes Environmental Education Centre: www.melvillecity.com.au
- South West Environment Centre: www.swecwa.org

Volunteering

Volunteering WA www.volunteeringwa.org.au

Technical advice and expertise

The following programs can provide landholders and community groups with technical advice in order to gain an understanding of wetlands on their land and the management practices they need to employ to protect them. The programs outlined below currently deliver technical assistance through a variety of mechanisms ranging from education materials to one-on-one advice from trained staff.

Table 10. Programs available to provide technical advice on wetland management

Program	Who is eligible/ supported	Advice provided	For further information	Geographic spread
Bush Brokers. World Wildlife Fund (WWF) Australia, Real Estate Institute of Western Australia (REIWA), and the National Trust of Australia (WA)	Conservation-minded groups and individuals Buyers and sellers of bush	Manual for buyers, sellers and realtors Checklist and information brochures for buyers and sellers of bush Case study documents	info@bushbrokers.com WWF Australia (08) 9387 6444 REIWA (08) 9755 5123 Natural Heritage Manager at National Trust of Australia (WA) (08) 9321 6088 www.bushbrokers.com.au	State-wide
Environmental Defenders Office (WA) Inc.	Community groups and individuals who cannot otherwise afford assistance	Legal advice and representation on public interest environmental law issues	Environmental Defenders Office (WA) Inc. (08) 9221 3030, 1 800 175 542 edowa@edowa.org.au www.edowa.org.au	State-wide
Healthy Wetland Habitats, DEC	Private landholders	Wetland management advice	Healthy Wetlands Coordinator (08) 9219 8788 www.dec.wa.gov.au/hwh hwh@dec.wa.gov.au	Jurien-Dunsborough, including Perth metropolitan area
Land for Wildlife, DEC	Private landholders	Bushland and wetland management advice	DEC Land for Wildlife Senior Project Officer (08) 9334 0427 www.dec.wa.gov.au/landforwildlife	State-wide

Program	Who is eligible/ supported	Advice provided	For further information	Geographic spread
Seed Management Services, Greening Australia WA	Commercial service to clients in government, industry, the private sector and community	Direct technical advice and training on best practice seed collection and rehabilitation methods Advice on suitable native species Technical advice on revegetation planning and direct seeding	Seed Management Services Co-ordinator (08) 9335 8933 bsmith@gawa.org.au	State-wide
Urban Nature, DEC	Land managers, associated community groups	Technical advice relating to wetland and bushland management	Urban Nature Coordinator (08) 9423 2900 urban.nature@dec.wa.gov.au.	DEC's Swan Region and beyond
Wetlands Section, DEC	Land managers Community groups	Advice on managing wetlands	wetlands@dec.wa.gov.au	State-wide

Wetland mapping

Wetland mapping has been undertaken, to varying degrees, in some regions of WA (Figure 4). Mapping scale and type of information collected varies with each project but ranges from 1:25,000 to 1:250,000 and information may include wetland location, boundary, type and values. Additional mapping projects, particularly in the midwest and south-west, are in development. As mapping projects are finalised, datasets containing this information are made publicly available. Public access for viewing and downloading datasets is outlined in the next section 'Online data sources with information on WA's wetlands'. For more information about wetland mapping in WA, see the topic 'Introduction to the guide'.

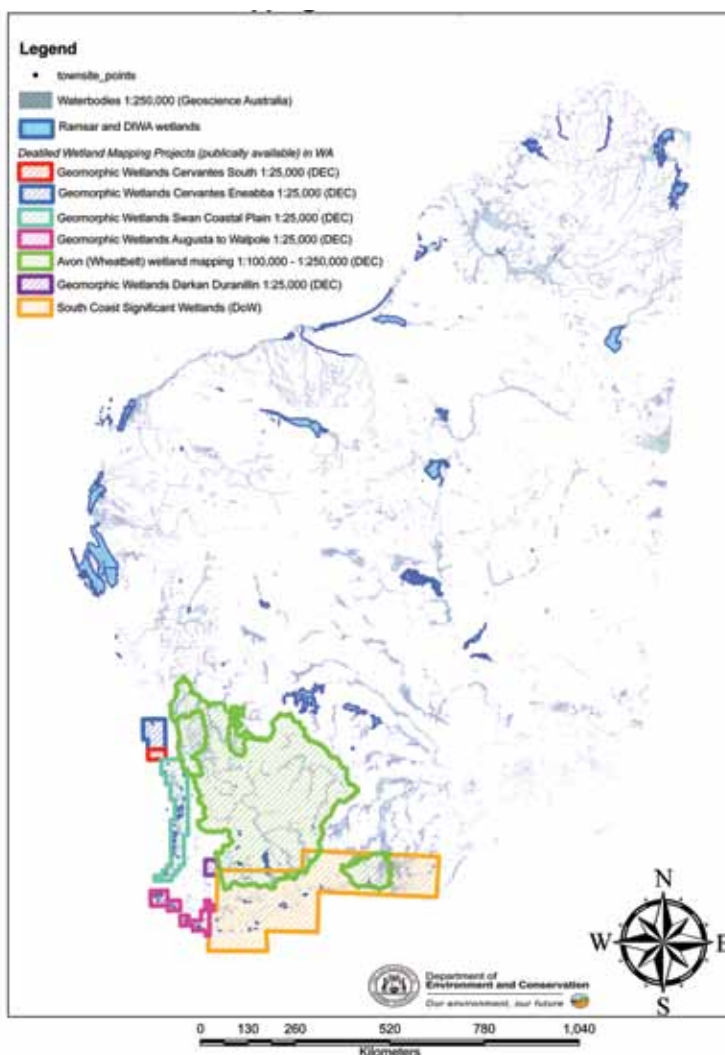


Figure 4. Areas of WA where wetlands have been mapped. Image – Wetlands Section/DEC.

Online data sources with information on WA's wetlands

The Australian Wetlands Database provides online access to information on internationally important wetlands, that is, Australia's Ramsar wetlands; and nationally important wetlands, that is, sites listed in the online directory of important wetlands of Australia. <http://environment.gov.au/water/topics/wetlands/database/index.html>

Landgate's WA Atlas is a basic map viewer enabling users to see what WA data is available and to do some simple mapping functions. The following wetland datasets are available via <https://www2.landgate.wa.gov.au/slip/portal/home/home.html>:

- *Geomorphic Wetlands Swan Coastal Plain* dataset
- *Geomorphic Wetlands Augusta to Walpole* dataset
- *South Coast Significant Wetlands* dataset
- *Ramsar Sites Western Australia* dataset
- *Lakes Environmental Protection Policy* dataset
- *South West Agricultural Zone Wetlands Environmental Protection Policy* dataset

It also provides cadastral information (for example, property boundaries and numbers).

For information and instructions on how to view these datasets go to: www.dec.wa.gov.au/management-and-protection/wetlands/wetlands-mapping.html. Additional mapping projects, particularly in the midwest and south-west, are in development. As mapping projects are finalised, datasets containing this information are made publicly available.

DEC's **NatureMap** enables users to produce maps, lists and reports of WA's flora and fauna diversity. Wheatbelt wetland mapping is also available on NatureMap. <http://naturemap.dec.wa.gov.au/>

DEC's **WetlandBase** is an interactive database by DEC, with web hosting by the Department of Agriculture and Food WA, available via www.dec.wa.gov.au/management-and-protection/wetlands/wetlands-data/wetlandbase.html or via <http://spatial.agric.wa.gov.au/wetlands>. *WetlandBase* provides a comprehensive online resource of information and data about Western Australian wetlands. It provides spatial data, such as wetland mapping, and point data, such as water chemistry, waterbirds, aquatic invertebrates and vegetation sampling results. DEC is preparing an alternative to *WetlandBase*, scheduled for release in 2013, that will continue to make this data publicly available.

Google Earth enables viewing of aerial photography and, where available, aerial photography over time (time series) www.google.com/earth.

Landgate's **Map Viewer** enables viewing of aerial photography and, where available, aerial photography over time (time series). It also provides cadastral information (for example, property boundaries and numbers). <https://www.landgate.wa.gov.au/bmvf/app/mapviewer/>

Websites and newsletters

ASSAY (acid sulfate soil newsletter) is provided by the NSW Department of Primary Industries and funded by the Australian Government. To subscribe contact Simon Walsh simon.walsh@dpi.nsw.gov.au or see www.dpi.nsw.gov.au/aboutus/resources/periodicals/newsletters/assay.

Australian Society for Limnology (ASL) is a professional association for scientists and managers of inland waters, including rivers, streams, lakes, reservoirs and estuaries. See www.asl.org.au

Bushland news is the newsletter of DEC's Urban Nature Program, produced quarterly to support community involvement in bushland conservation. To subscribe, email urban.nature@dec.wa.gov.au. Current and archived issues are available at www.dec.wa.gov.au/management-and-protection/programs/urban-nature/bushland-news.html

COOEEads provides a weekly email listing of jobs, conferences and training opportunities in the outdoor education/ recreation; environmental education/extension; and conservation/park management fields in Australia and New Zealand. To subscribe visit www.cooeeads.com.au.

DEC wetlands webpage www.dec.wa.gov.au/wetlands provides information on WA's wetlands and details of DEC programs.

DSEWCaP wetlands webpage <http://environment.gov.au/water/topics/wetlands/index.html> provides information on Australia's wetlands and details of the Australian Department of Environment, Sustainability, Water, Communities and Population programs.

Small Landholder Information Service (AgWA) provides a specialised website for landholders wishing to manage land sustainably. To subscribe see www.agric.wa.gov.au/PC_92609.html

WATSNU newsletter by DEC is a newsletter about the conservation of WA's threatened species and ecological communities, many of which are wetlands. To subscribe, email Gemma.Grigg@dec.wa.gov.au or Jill.Pryde@dec.wa.gov.au. For current and archived issues see www.dec.wa.gov.au/management-and-protection/threatened-species/watsnu-newsletters.html

WetlandCare Australia (WCA) is a national not-for-profit, non-government science-based organisation with a mission to support the community in the protection and repair of Australia's wetlands through action-based partnerships with governments, landholders, natural resource managers, researchers and the community www.wetlandcare.com.au. Their email bulletin is WetlandLink, subscribe from www.wetlandcare.com.au/index.php/news/wetlandlink-newsletter

Wetlands Australia magazine is a twice-yearly publication by the Department of Sustainability, Environment, Water, Population and Communities. It brings together information and resources from across Australia relating to wetlands conservation, management and education. To subscribe and for current and archived issues go to <http://environment.gov.au/water/publications/environmental/wetlands/wetlands-australia/index.html>