

THE SHORT-RANGE ENDEMIC INVERTEBRATE FAUNA OF THE RAVENSTHORPE RANGE

MARK S. HARVEY

MEI CHEN LENG

**Department of Terrestrial Zoology
Western Australian Museum**



June 2008

Executive Summary

An intensive survey of short-range endemic invertebrates in the Ravensthorpe Range at 79 sites revealed a small but significant fauna of myriapods and arachnids.

Four species of short-range endemic invertebrates were found:

- The millipede *Antichiropus* sp. R
- The millipede *Atelomastix* sp. C
- The millipede *Atelomastix* sp. P
- The pseudoscorpion *Amblyolpium* sp. "WA1"

Atelomastix sp. C is the only species found to be endemic to the Ravensthorpe Range and was found at 14 sites.

Antichiropus sp. R, *Atelomastix* sp. P and *Amblyolpium* sp. "WA1" are also found at nearby locations.

Sites of high importance include: site 40 with 7 species; sites 7 and 48 each with 5 species; and sites 18 and 44 each with 4 species.

Introduction

Australia contains a multitude of terrestrial invertebrate fauna species, with many yet to be discovered and described. Arthropods alone were recently estimated to consist of approximately more than 250,000 species (Yeates *et al.* 2004). The majority of these belong to the arthropod classes Insecta and Arachnida, and although many have relatively wide distributions across the landscape, some are highly restricted in range with special ecological requirements. These taxa, termed short-range endemics (Harvey 2002b), are taxa categorised as having poor dispersal abilities and/or requiring very specific habitats, usually with naturally small distributional ranges of less than 10,000 km² and the following ecological and life-history traits:

- poor powers of dispersal;
- confinement to discontinuous habitats;
- usually highly seasonal, only active during cooler, wetter periods; and
- low levels of fecundity.

The Western Australian fauna contains a number of SRE taxa, including millipedes, land snails, trap-door spiders, some pseudoscorpions, slaters, and onychophorans. The Ravensthorpe Range has representatives of some, if not all, of these groups.

This study was conceived to extensively survey the refugial habitats covering the geomorphological and geological variation across the Ravensthorpe Range, searching for potential short-range endemic invertebrate species.

Permits

All collecting was undertaken under permit no. SF005814 issued by the Department of Environment and Conservation.

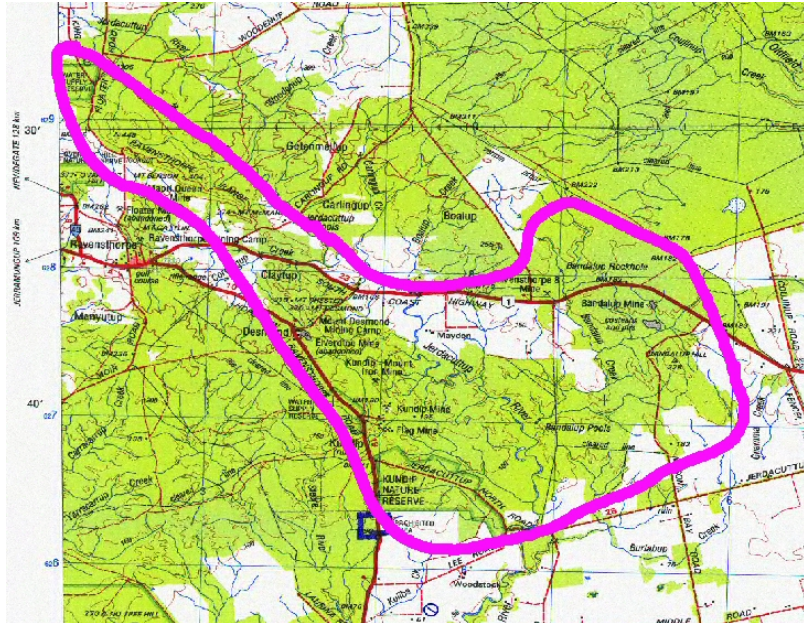


Figure 1. Map of Ravensthorpe Range.

Climate

Dick (1975) used the Koppen's climatic classification to conclude the Range is within 'low latitude steppe'. This is defined as an area where precipitation is less than, but more than half, of potential evaporation and average temperature is greater than 18 degrees (Everything₂, Online: 31 October 2007, http://www.everything2.com/index.pl?node_id=1323633). Graphs taken from the Bureau of Meteorology website (http://www.bom.gov.au/climate/averages/tables/cw_010633.shtml), shows maximum and minimum temperatures in degrees Celsius (Figure 2) recorded in the Ravensthorpe area from 1962 to 2007. Readings from the graph shows that Ravensthorpe experiences cool winters and generally warm summers, which are due to the onset of sea breezes, frost and snow is very rare.

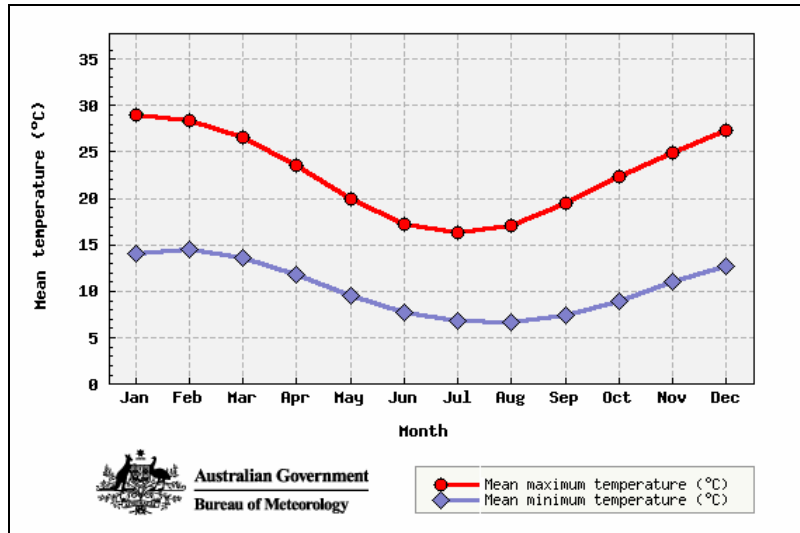


Figure 2. Australian Bureau of Meteorology records of mean maximum and minimum temperatures (°C) at Ravensthorpe spanning from 1962-2007.

Figure 3 displays precipitation readings showing mean rainfall recordings from 1901 to date, compared with 2007's recordings thus far. Looking at the mean rainfall recordings from 1901 to date, Ravensthorpe tends to experience higher rainfalls during the period of May through to October. Winter precipitation is mainly from cold fronts and depressions where in summer it is due to thunderstorms associated with 'troughs', rain-bearing depressions from deteriorated cyclones or coastal rains from onshore winds (Chapman and Newbey 1995). The low rainfall during the winter in 2007 compared to the mean rainfall can be explained by the change in weather patterns since the 1950's from reliable winter rains to unreliable rains (M. Grant, Department of Environment and Conservation, pers comm.). Overall the South-west WA has had a decline in rainfall, becoming 25% drier in winter, with most of the decline occurring from 1960–1972 (Hennessy *et al.* 1999).

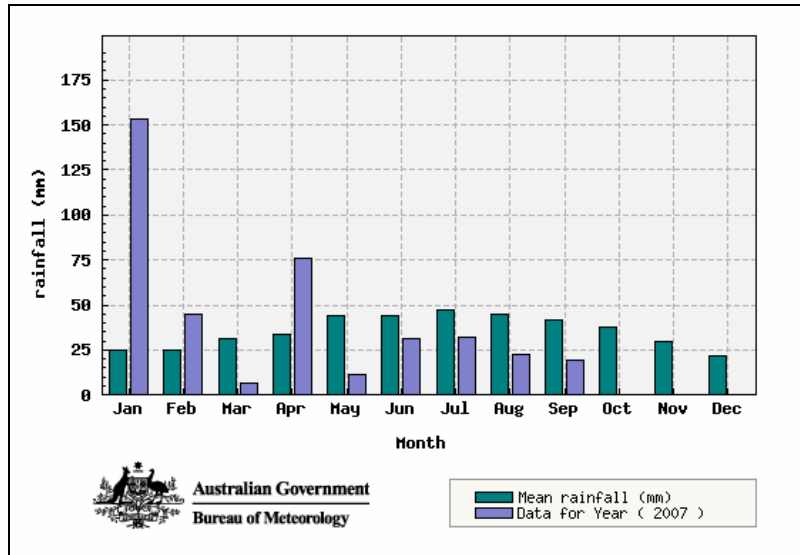


Figure 3. Australian Bureau of Meteorology records of Ravensthorpe mean rainfall (mm) spanning from 1901–2007, compared with 2007 rainfall recordings.

Geology & Landforms

The townsite of Ravensthorpe lies on a paleolake (basin-like surface once covered in shallow sea). The oldest rocks that have been recorded in the South Central Coast can be found in the Ravensthorpe district, which was laid down during the Archaean (Newbey 1985). In an era before 3 000 million years ago, Western Australia (WA) experienced great tension which caused fissures to appear and volcanic activity to occur. In the area that included the Ravensthorpe townsite, eventually the sea floor buckled and folded. This caused the successional layers of volcanic and sedimentary rocks to form a dome. Today the Range is the remnants of this dome that has been largely eroded away. The main core that has resisted erosion (forming the ridge of the Range) is sedimentary rock; whilst weathering of the volcanic basalt has produced the red fertile soils the Ravensthorpe area is renowned for (Craig 1995).

The Range consists mainly of a substance known as 'greenstone', which is an igneous substance made up of basalt and volcanic ash. Layered sandstone and iron hydroxides, known as Banded Ironstone Formation, can be found in the Range intermixed with the greenstone. The ridge of the Range is mainly tilted greenstone and Banded Ironstone Formation and in some sections of the southern quarter of the Range, thin beds of Proterozoic quartzite can be found. Speaking in more recent

geological times, much of the Range's upper surface has undergone laterization, forming a massive laterite cap (Chapman and Newbey 1995).

The Range is within the South-West Drainage System of WA with most water entering the main drainage line, the Jerdacuttup River, in a dendritic fashion. Rising 150 m above ground with most lower slopes of 5–10 degrees and upper slopes of 20–30 degrees; steeper slopes are found in the northern section and tend to decrease from north-west to south in the southern regions. Rocky outcrops are not uncommon in the Range that increases when slope increases (Chapman and Newbey 1995). Six mountains are found amongst and near the Range, the more well known two being Mt Short (450 m) in the far north and Mt Desmond (340 m) which is a lookout point in the south (Craig 1995).

Vegetation

At each site sampled, basic vegetation type was assessed (Appendix 1).

Techniques

Sites

A total of 79 sites were examined for short-range endemic invertebrates within the Ravensthorpe Range (Appendix 1; Figures 4-8). Sites were selected to maximise the chances of finding short-range endemic invertebrates. In particular, gullies and south-facing slopes were targeted; these areas are well known to harbour relictual invertebrates (Harvey 2002b; Hopper *et al.* 1996; Main and Main 1991).

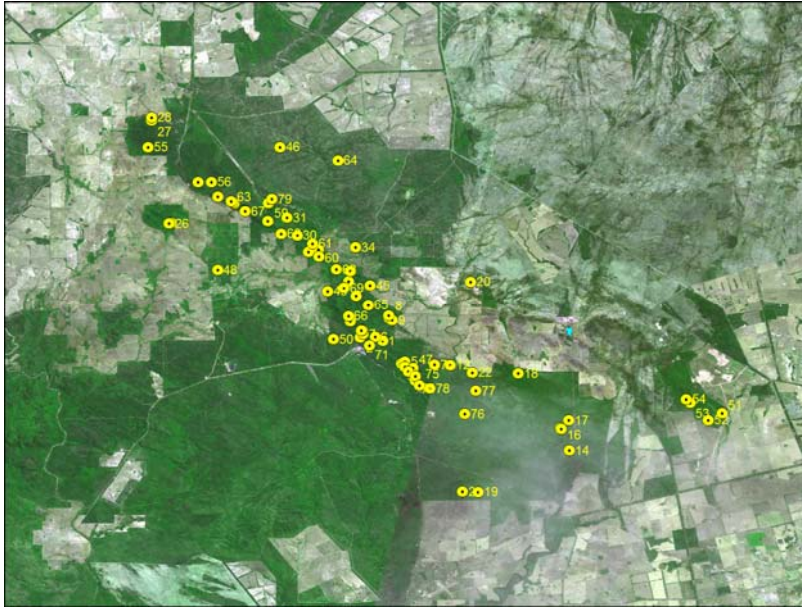


Figure 4. Sites surveyed in the Ravensthorpe Range for the Short-Range Endemic Survey.



Figure 5. Detail of sites surveyed in the Ravensthorpe Range for the Short-Range Endemic Survey, northern area.



Figure 6. Detail of sites surveyed in the Ravensthorpe Range for the Short-Range Endemic Survey, central area.



Figure 7. Detail of sites surveyed in the Ravensthorpe Range for the Short-Range Endemic Survey, southern area.

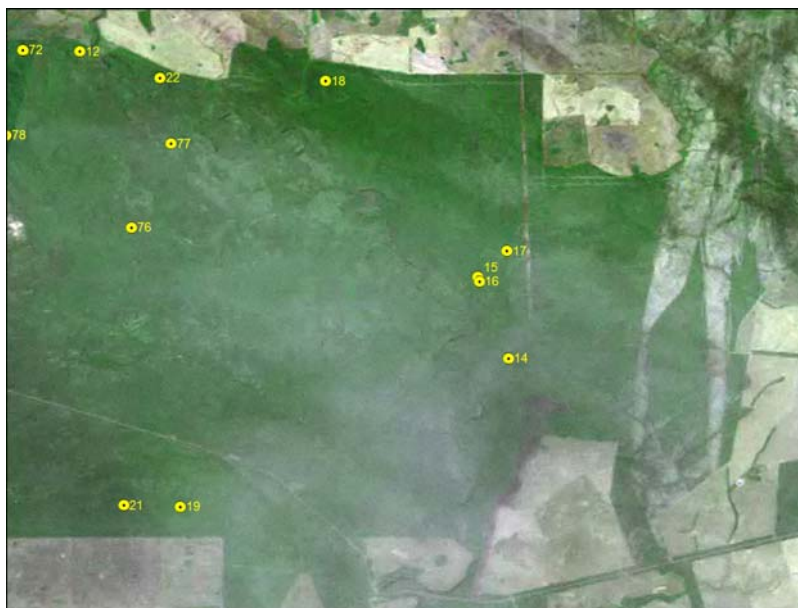


Figure 8. Detail of sites surveyed in the Ravensthorpe Range for the Short-Range Endemic Survey, south-eastern area.

Sampling techniques

Sites were sampled by searching under rocks, under and within logs, in leaf litter, digging spiders from their burrows, and peeling the bark of trees (particularly eucalypt trees). Each site was sampled by two people for at least 2.5 hours. Specimens collected were preserved in preservative appropriate to that group (usually 75% ethanol) and the vial labelled. Each site was geo-referenced with GPS coordinates. The samples were sorted, provided with permanent labels, and added to the Western Australian Museum's database and permanent specimen collection located in Welshpool. They were identified in the laboratory using dissecting and compound microscopes, and digital images of each species were taken. Each putative species was closely compared with existing named species or with species already known to occur in the area.

Voucher collections

All specimens collected during the survey are lodged in the Western Australian Museum. All specimens contain full locality data, including registration number, date of collection, collector(s) name and site code (see Appendix 2).

SELECTED FAUNA OF THE RAVENSTHORPE RANGE, WITH EMPHASIS ON THE SHORT-RANGE ENDEMIC SPECIES

The taxa treated in this report are those that we have relatively good taxonomic knowledge for, and include taxa that are known to include numerous short-range endemic species. Whilst some have been found to represent authentic short-range endemics, others appear to be more widespread and do not represent short-range endemics.

Phylum Arthropoda

Class Diplopoda (millipedes)

Order Polydesmida

Family Paradoxosomatidae

Antichiropus sp. "Ravensthorpe Range"

The millipede genus *Antichiropus* is largely confined to south-western Australia but a single species has been described from the Eyre Peninsula in South Australia (Attems 1911; Jeekel 1985). At present there are eight described and named species found in Western Australia, but more than 110 new species have been detected, making it one of the most diverse animal genera in Western Australia. Although there are differences in size and colour between some species, the only reliable way to separate species of *Antichiropus* is in the morphology of the male gonopods, which are modified legs on the seventh body segment. The gonopods are used to transfer sperm during copulation.

Antichiropus sp. "Ravensthorpe Range" (Figure 9) is found throughout the Ravensthorpe Range (Figure 10), as well as the nearby Eyre Range in the Fitzgerald River National Park, and Bremer Bay (Figure 11).



Figure 9. *Antichiropus* sp. "Ravensthorpe Range".

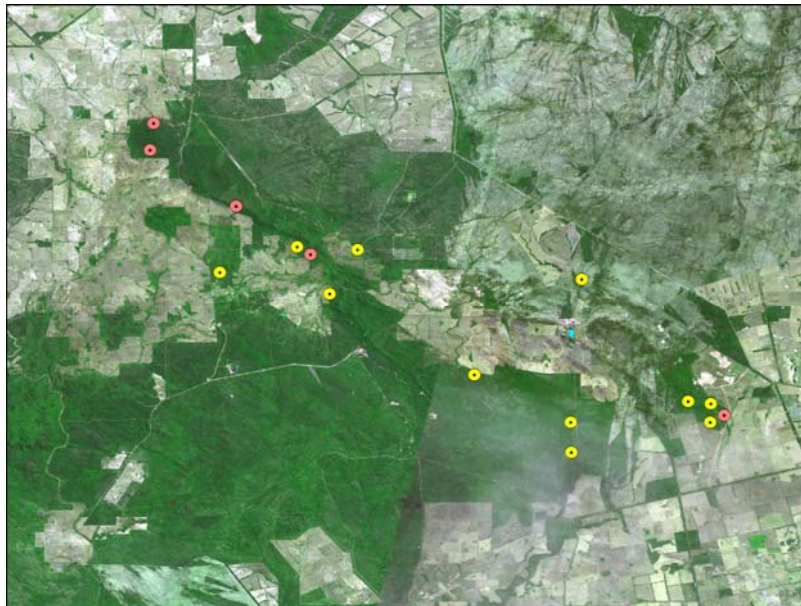


Figure 10. Distribution of *Antichiropus* sp. "Ravensthorpe Range" (yellow); records only represented by female or juvenile specimens are in (red) in the Ravensthorpe Range. The identification of specimens not based upon adult males is slightly doubtful.

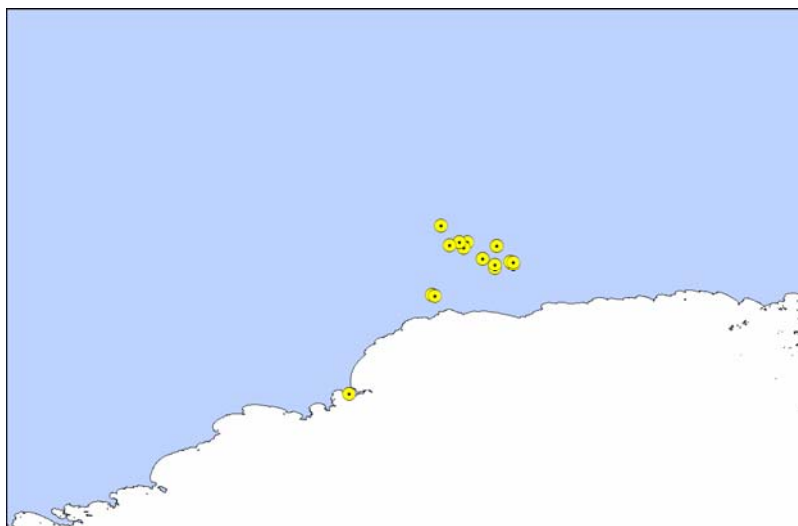


Figure 11. Distribution of *Antichiropus* sp. "Ravensthorpe Range".

Order Spirostreptida

Family Iulomorphidae

Genus *Atelomastix*

The millipede genus *Atelomastix* is represented by two species in the Ravensthorpe Range. Both species are undescribed and descriptions have been prepared and will be submitted for publication to the journal *Invertebrate Systematics* during 2008 (Edward and Harvey in preparation). The genus *Atelomastix* is endemic to south-western Australia with two named species, *A. albanyensis* and *A. nigrescens*, and 26 new species, each displaying distributions consistent with being short-range endemic species (Edward and Harvey in preparation). Female and juvenile specimens of each species are generally indistinguishable from each other, and the most consistent differences between species can be found in the morphology of the male genitalia. These can be examined by dissection of the gonopods and examination using dissecting and compound microscopes.

***Atelomastix* sp. C**

This new species of *Atelomastix* has, to date, been only found in the Ravensthorpe Range. It is characterised by the morphology of the male genitalia.



Figure 12. *Atelomastix* sp. C, female (left), male (middle) and male anterior gonopod (right).

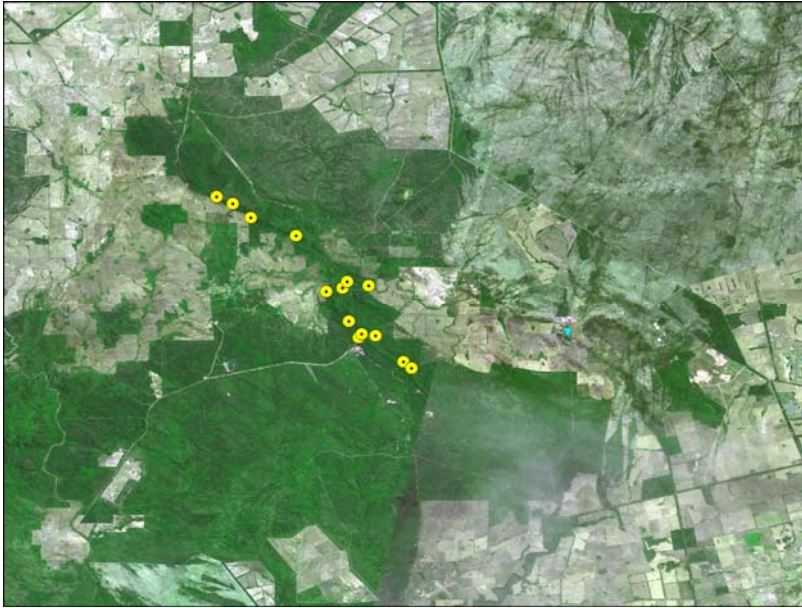


Figure 13. Distribution of *Atelomastix* sp. C in the Ravensthorpe Range.

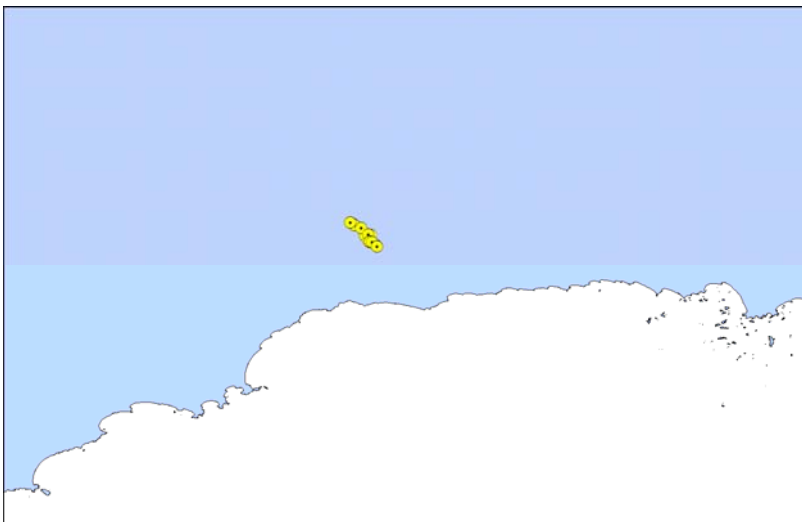


Figure 14. Distribution of *Atelomastix* sp. C.

***Atelomastix* sp. P**

This new species of *Atelomastix* has been only found within the Ravensthorpe Range, as well as from Fitzgerald River National Park. It is characterised by the morphology of the male genitalia.



Figure 15. *Atelomastix* sp. P, female (left), and male anterior gonopod (right).

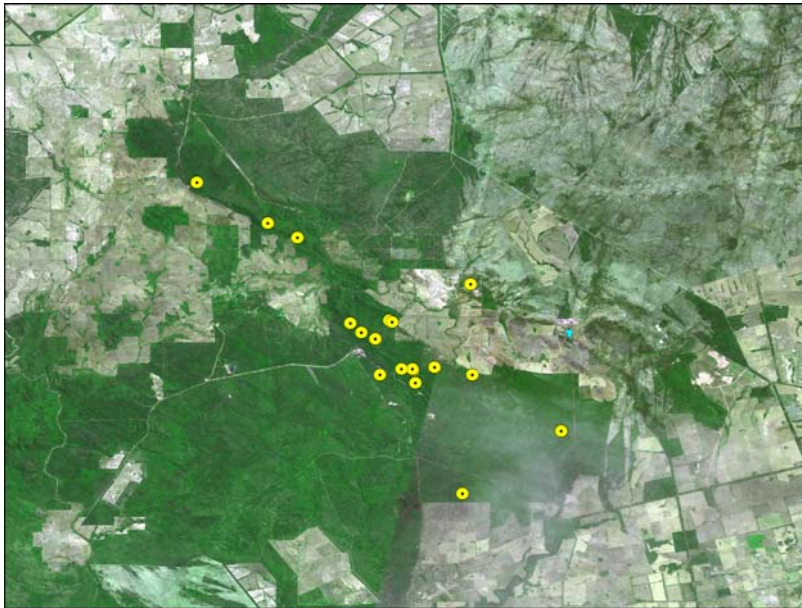


Figure 16. Distribution of *Atelomastix* sp. P in the Ravensthorpe Range.

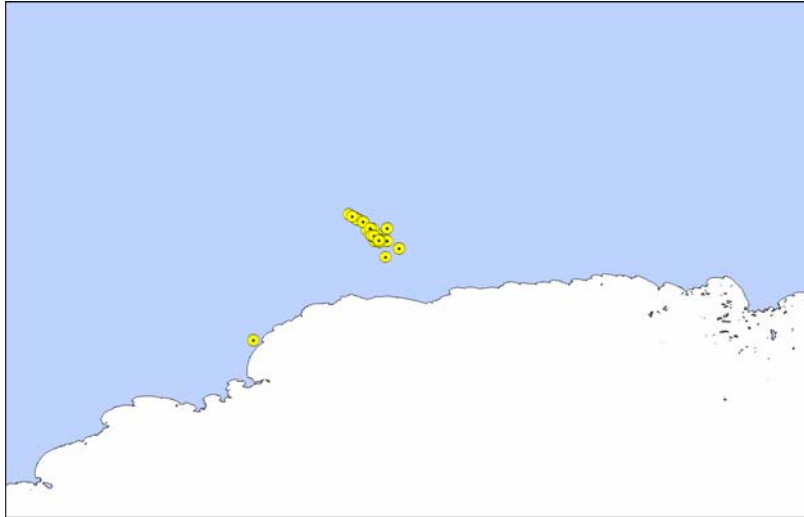


Figure 17. Distribution of *Atelomastix* sp. P.

Class Arachnida

Order Pseudoscorpiones (pseudoscorpions)

Pseudoscorpions are small arachnids that superficially resemble scorpions but lack the elongate tail and sting. The Western Australian fauna is quite diverse with representatives from 17 families. Despite several publications over the past two decades, the fauna is still poorly known with dozens of new species awaiting description.

Family Cheliferidae

***Protochelifer* sp.**

Pseudoscorpions of the genus *Protochelifer* occur in Australia and New Zealand, comprising a handful of named species (Harvey 1991a) and numerous unnamed species. The *Protochelifer* fauna of south-western Australia consists of several unnamed species, including one that is also found at Ravensthorpe Range (Figures 18, 19).



Figure 18. *Protochelifer* sp., male, dorsal and ventral aspects.



Figure 19. Distribution of *Protochelifer* sp. in the Ravensthorpe Range.

Family Chthoniidae

***Austrochthonius* sp.**

Members of the chthoniid genus *Austrochthonius* occur in Gondwanan habitats in Australia, New Zealand, South America and South Africa (Harvey 1991a). The Western Australian fauna consists of two troglobitic species (Harvey 1991b; Harvey and Mould 2006) and several species in forest litter, mainly in south-western Australia. The status of most populations in south-western Australia is unknown, as species-level differences are not fully understood. However, it is unlikely that the *Austrochthonius* specimens found in the Ravensthorpe Range (Figures 20, 21) are

different at the species level from specimens found in other areas in the region, including Fitzgerald River National Park and the Esperance region.

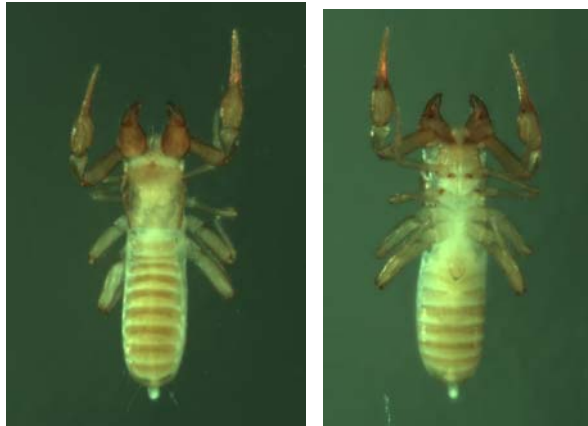


Figure 20. *Austrochthonius* sp., male, dorsal and ventral aspects.



Figure 21. Distribution of *Austrochthonius* sp. in the Ravensthorpe Range.

Lagynochthonius australicus

The chthoniid genus *Lagynochthonius* occurs in many tropical and sub-tropical ecosystems of the world (Harvey 2008), but very few Australian species are currently described. Research into Western Australian subterranean ecosystems has resulted in the recent description of several new troglobitic species from the Pilbara and Yilgarn regions (Edward and Harvey 2008), characterised by total loss of eyes and very pallid colouration.

Lagynochthonius australicus (Figure 22) was first described as a member of *Tyrannochthonius* from a single juvenile specimen collected near Denmark (Beier 1966). Since then, the species has been found at a wide variety of locations across south-western Australia (Figure 22) where it occurs in leaf litter and upper soil layers, generally in high rainfall regions. It has been found at several sites within the Ravensthorpe Range (Figure 23), which represents one of its most easterly limits thus far (Figure 24).

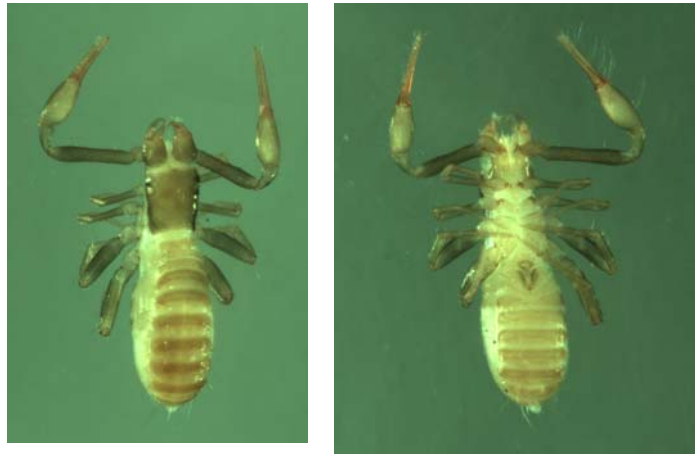


Figure 22. *Lagynochthonius australicus*, male, dorsal and ventral aspects.

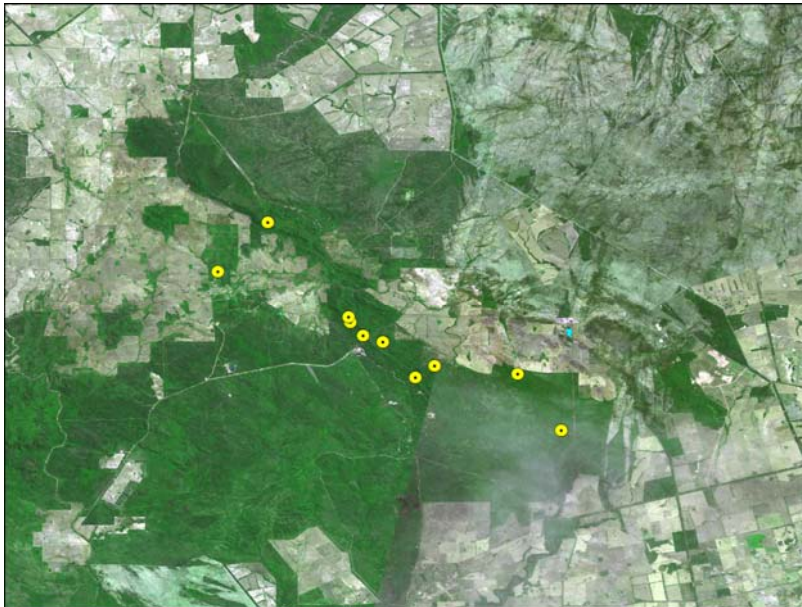


Figure 23. Distribution of *Lagynochthonius australicus* in the Ravensthorpe Range.

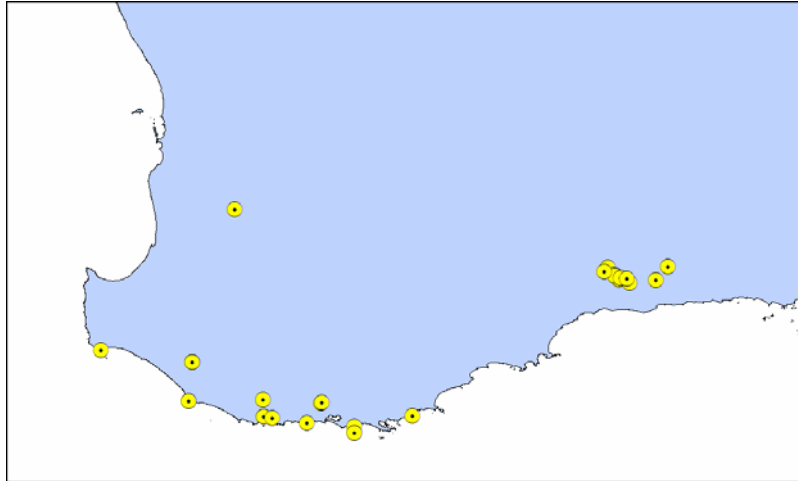


Figure 24. Distribution of *Lagynochthonius australicus*.

Family Garypidae

Genus *Synsphyronus*

The genus *Synsphyronus* is the most diverse Australian pseudoscorpion genus with 26 named species (Harvey 1987), but numerous new species have since been found in Australia and New Caledonia (Harvey, unpublished data). Most species are habitat specific, with many found under tree bark and others occurring under rocks.

Synsphyronus lathrius

Synsphyronus lathrius (Figure 25) occurs under rocks in south-eastern Western Australia (Harvey 1987) and has been found at the following locations: near Madura, Fraser Ranges, and Ravensthorpe Range (Figures 26, 27). They can be found under limestone or laterite rocks, and prefer habitats where rocks sit on rocks, not embedded into soil. The Ravensthorpe Range samples are the first from this area and represent a considerable westwards range extension (Figure 26).



Figure 25. *Synsphyronus lathrius*, dorsal.

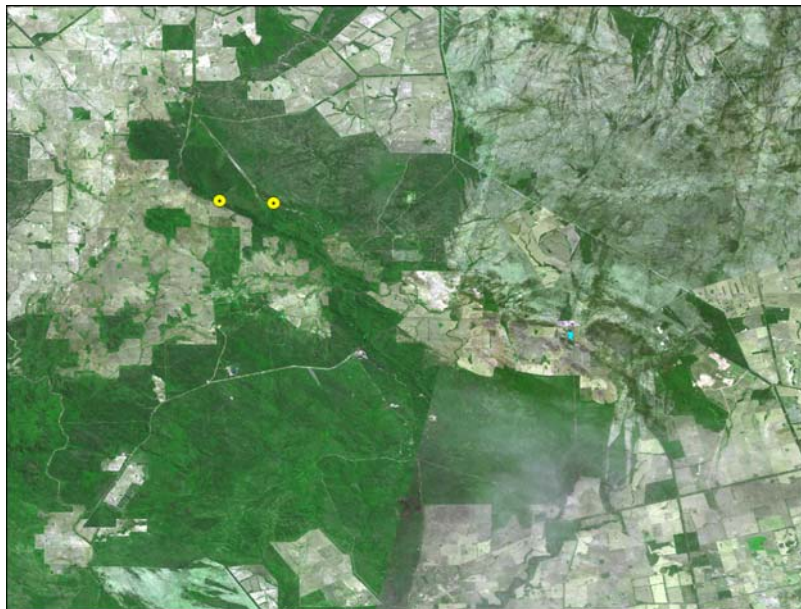


Figure 25. Distribution of *Synsphyronus lathrius* in the Ravensthorpe Range.

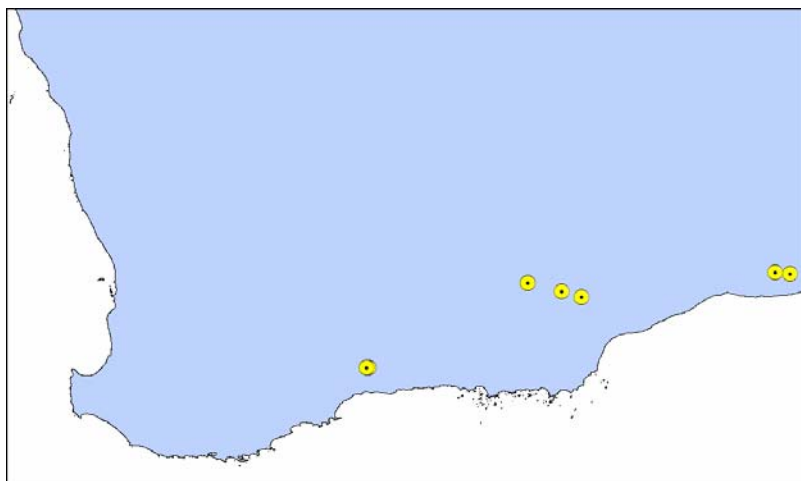


Figure 26. Distribution of *Synsphyronus lathrius*.

Synsphyronus mimulus

Synsphyronus mimulus (Figure 27) also occurs under rocks but prefers situations where the rocks are embedded into the soil. It was found in the Ravensthorpe Range and but has been located in a number of locations in the southern half of Australia, and occurs as far east as Victoria (Harvey 1987). Within Western Australia it is relatively widespread (Figure 29), and was found at five sites within the Ravensthorpe Range (Figure 28).



Figure 27. *Synsphyronus mimulus*, dorsal and ventral aspects.

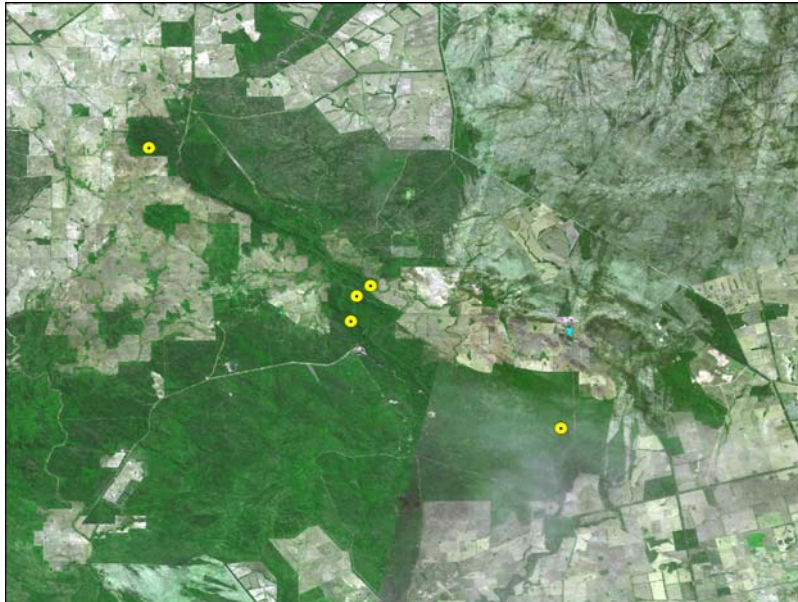


Figure 28. Distribution of *Synsphyronus mimulus* in the Ravensthorpe Range.

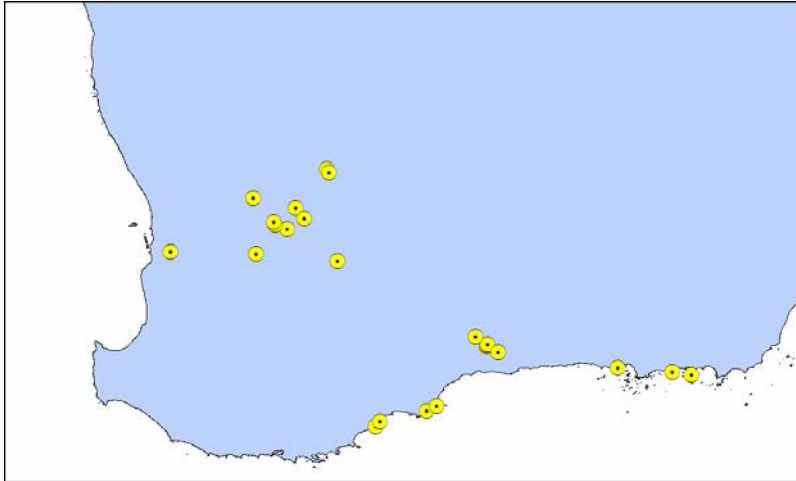


Figure 29. Distribution of *Synsphyronus mimulus* in Western Australia.

Family Garypinidae

***Amblyolpium* sp. "WA1"**

Pseudoscorpions of the genus *Amblyolpium* are found throughout various regions of the world, including Asia, northern Africa, southern Europe and South America. Several new species have been recognised from Australia (Harvey, unpublished data), and the specimens from Ravensthorpe Range (Figure 30) represent a species only previously known from McDermid Rock (32°01'S, 120°44'E) (Figure 32). Specimens occur within leaf litter and were collected using Tullgren funnels. The Ravensthorpe Range records are from the Ravensthorpe township region, in the north-western area of the study (Figure 31).

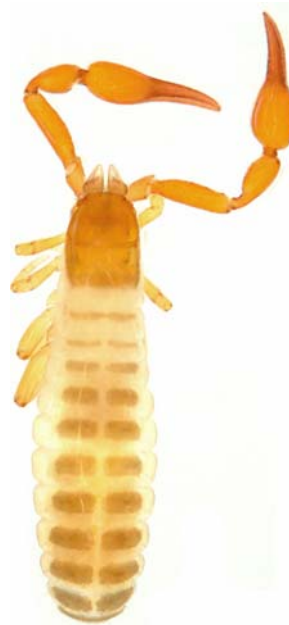


Figure 30. *Amblyolpium* sp. "WA1", dorsal.

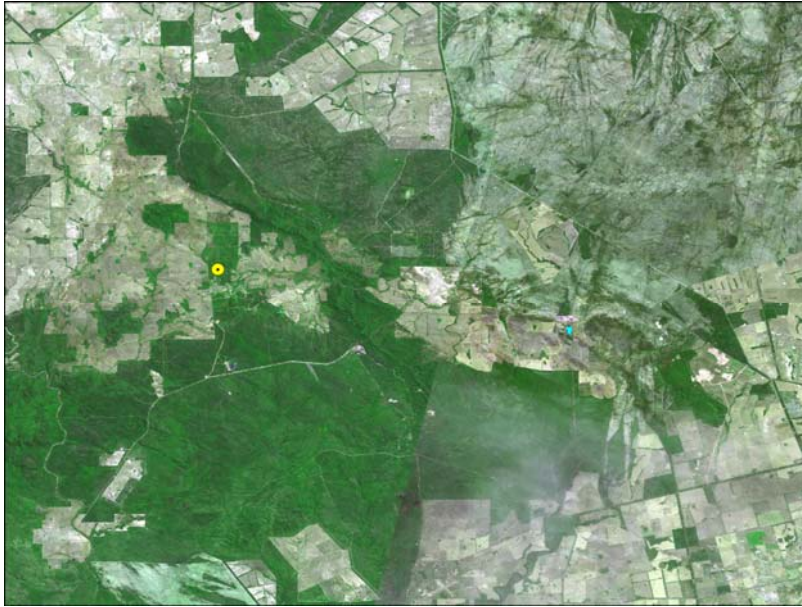


Figure 31. Distribution of *Amblyopium* sp. "WA1" in the Ravensthorpe Range.

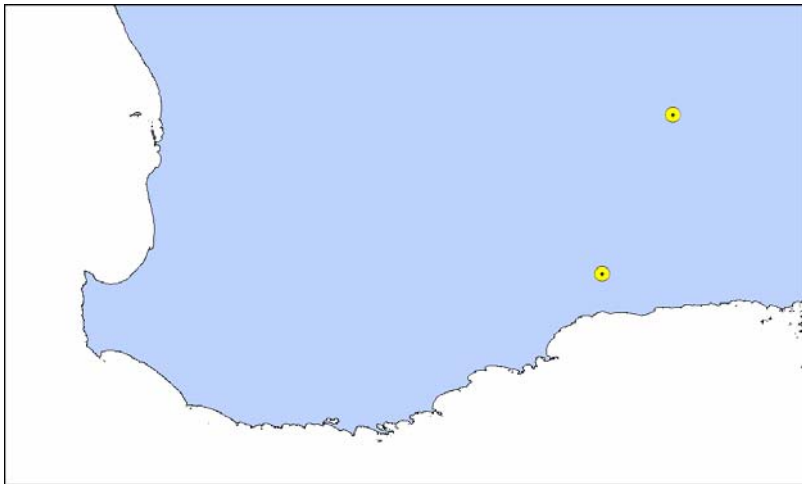


Figure 32. Distribution of *Amblyopium* sp. "WA1".

Family Geogarypidae

Geogarypus taylori

The pseudoscorpion family Geogarypidae is found throughout much of mainland Australia where several species have been named (Harvey 1986). The most widespread species, *Geogarypus taylori* (Figure 33), is found across much of southern Australia (Figure 35), where it occurs in leaf litter and under stones (Harvey 1986). It was found at two locations in the Ravensthorpe Range (Figure 34).

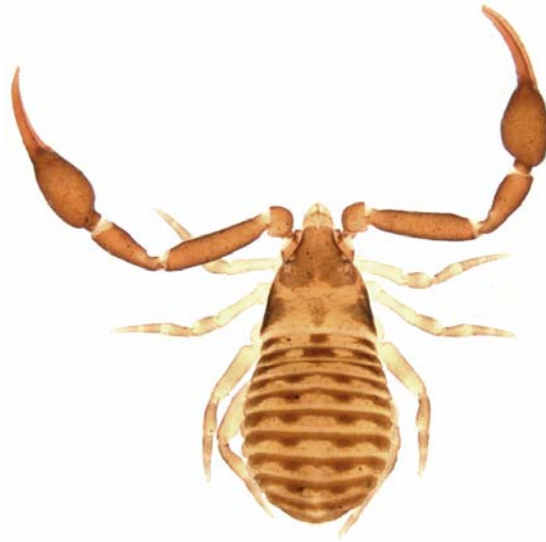


Figure 33. *Geogarypus taylori*, dorsal.

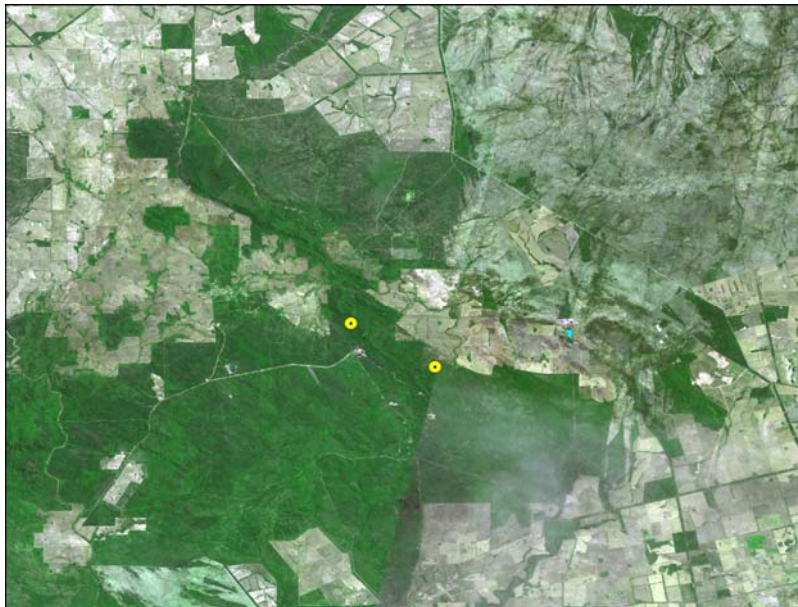


Figure 34. Distribution of *Geogarypus taylori* in the Ravensthorpe Range.

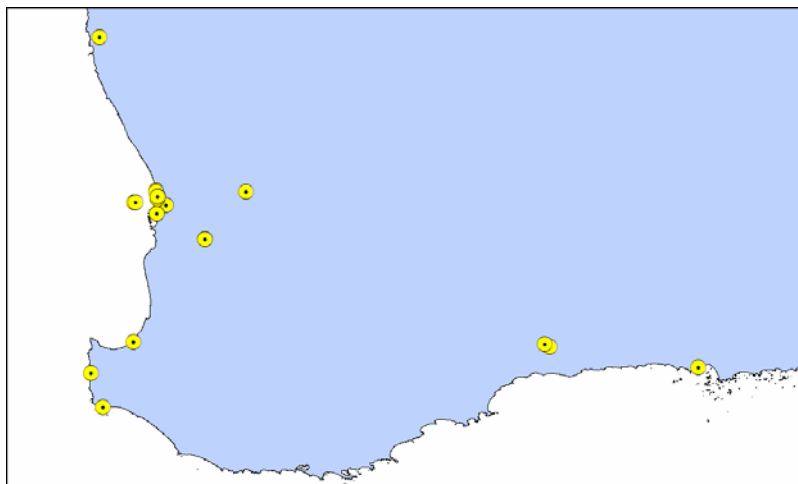


Figure 35. Distribution of *Geogarypus taylori* in Western Australia.

Family Olpiidae

Beierolpium bornemisszai

Members of the family Olpiidae are quite common in Western Australia, particularly in drier biotopes where they mostly occur under stones or in soil. The genus *Beierolpium* is particularly well represented with two named species (Harvey 2008) and numerous unnamed species (Harvey, unpublished data).

Beierolpium bornemisszai was first described from Gnangara, north of Perth in the genus *Xenolpium* (Beier 1966) and later transferred to the genus *Beierolpium*. The species seems to be found throughout parts of south-western Australia, especially outside of the wetter regions.



Figure 36. *Beierolpium bornemisszai*, male, dorsal and ventral aspects.

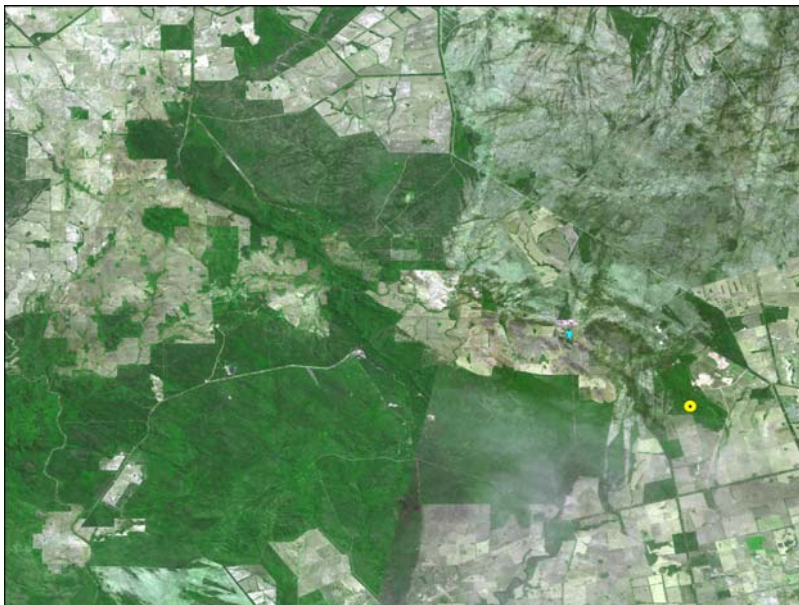


Figure 37. Distribution of *Beierolpium bornemisszai* in the Ravensthorpe Range.

Order Scorpiones

The Australian scorpion fauna consists of four families with markedly different distributions. Bothriuridae consists of one genus, *Cercophonius*, found in south-western and eastern Australia. They are largely found in Gondwanan habitats, and are most common in forest ecosystems. Buthidae comprise several genera (*Lychas*, *Isometroides*, *Australobuthus* and *Isometrus*) found across much of mainland Australia, but particularly in slightly drier habitats. Liochelidae, with a single genus *Liocheles*, are restricted to tropical Australia, including the Kimberley, "Top End" of Northern Territory, eastern Queensland and north-eastern New South Wales. Urodacidae consist of the genus *Urodacus*, which is found over much of mainland Australia (Koch 1977) and the recently described *Aops* from Barrow Island (Volschenk and Prendini 2008).

Representatives of three families have been found in the Ravensthorpe Range.

Family Bothriuridae

Cercophonius sulcatus

Scorpions of the family Bothriuridae are found in Australia, South America and southern Africa, and exhibit a classical Gondwanan distribution. The only bothriurids found in Australia belong to the genus *Cercophonius*, which currently comprises six named species, three from south-eastern Australia and three from south-western Australia. *Cercophonius sulcatus* is abundant within the south-western coastal region (Acosta 1990) and extends as far north as Bindoon (Figure 40). It was found at several locations within the Ravensthorpe Range (Figure 39).



Figure 38. *Cercophonius sulcatus*.



Figure 39. Distribution of *Cercophonius sulcatus* in the Ravensthorpe Range.

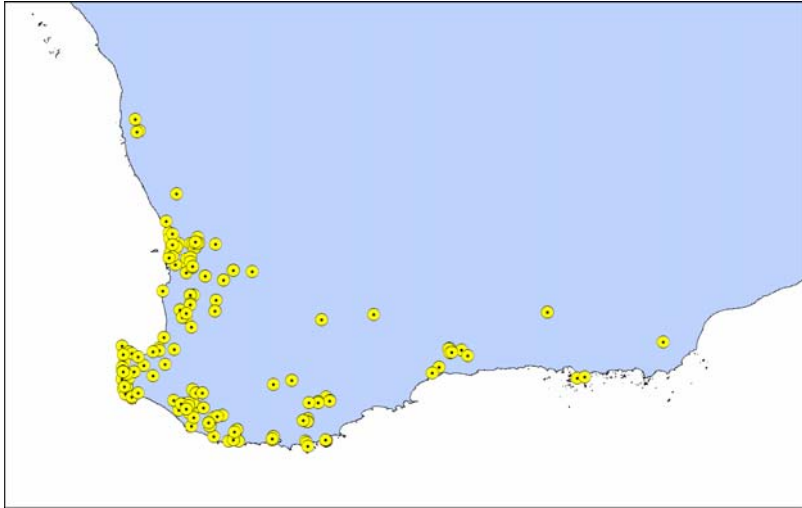


Figure 40. Distribution of *Cercophonius sulcatus*.

Family Buthidae

Lychas sp. A

Species of *Lychas* are abundant across all of mainland Australia (Koch 1977), as well as adjacent parts of south-eastern Asia. All species are generally quite small with slender pedipalps and mottled colouration.

The most abundant species of *Lychas* in south-western Australia is an undescribed species (Figure 41) that occurs as far north as Shark Bay and as far east as Israelite Bay (Figure 43). It is largely absent from the wetter regions of the south coast, and is frequently found under tree bark.

Lychas sp. A was found at several locations within the Ravensthorpe Range (Figure 42).



Figure 41. *Lychas* sp. A.



Figure 42. Distribution of *Lychas* sp. A in the Ravensthorpe Range.

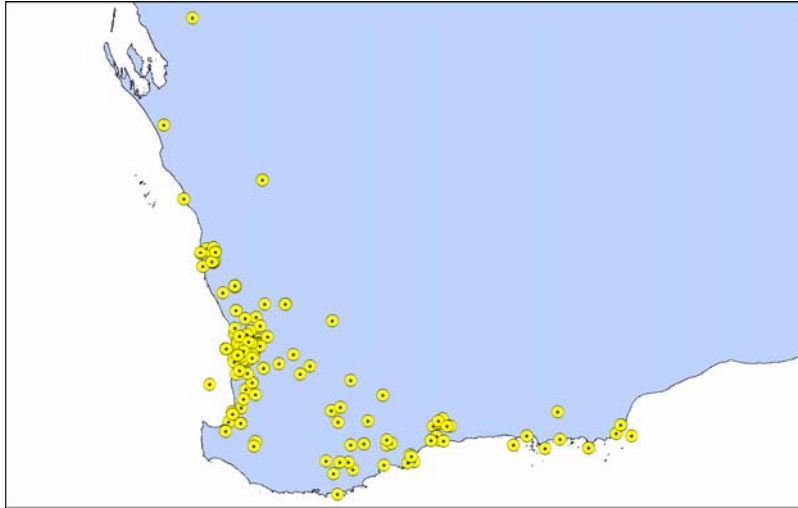


Figure 43. Distribution of *Lychas sp. A.*

Isometroides sp.

Scorpions of the genus *Isometroides* are found across mainland Australia, where they appear to be obligate predators of burrowing spiders (Koch 1977; Main 1956). Although only one species is currently recognised (Koch 1977), there are numerous undescribed species represented in museum collections (E. Volschenk, pers. comm.). Due to the poor state of the taxonomy of the genus, it is not currently possible to quantify their distributions.

Specimens of *Isometroides* (Figure 44) were found at two sites within the Ravensthorpe Range (Figure 45), but it is very unlikely that the species is restricted to this area.



Figure 44. *Isometroides* sp.

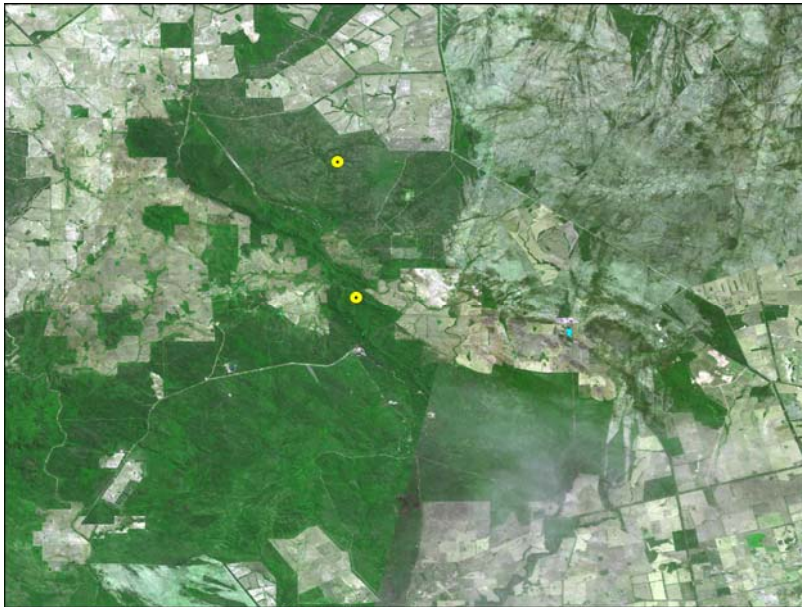


Figure 45. Distribution of *Isometroides* sp. in the Ravensthorpe Range.

Family Urodacidae

Urodacus novaehollandiae

The scorpion genus *Urodacus* is endemic to mainland Australia where 20 named species (Koch 1977; Volschenk *et al.* 2000) and at least 70 new species (E. Volschenk, unpublished data) occur. The Western Australian fauna is extremely diverse with high numbers of new species and, although numerous short range

endemic species are known, others are more widespread with relatively wide distributions.

Urodacus novaehollandiae (Figure 46) occurs throughout much of south-western Australia (Figure 48) where specimens occur under logs and rocks, making shallow burrows and scrapes. It was found throughout the Ravensthorpe Range (Figure 47).



Figure 46. *Urodacus novaehollandiae*.

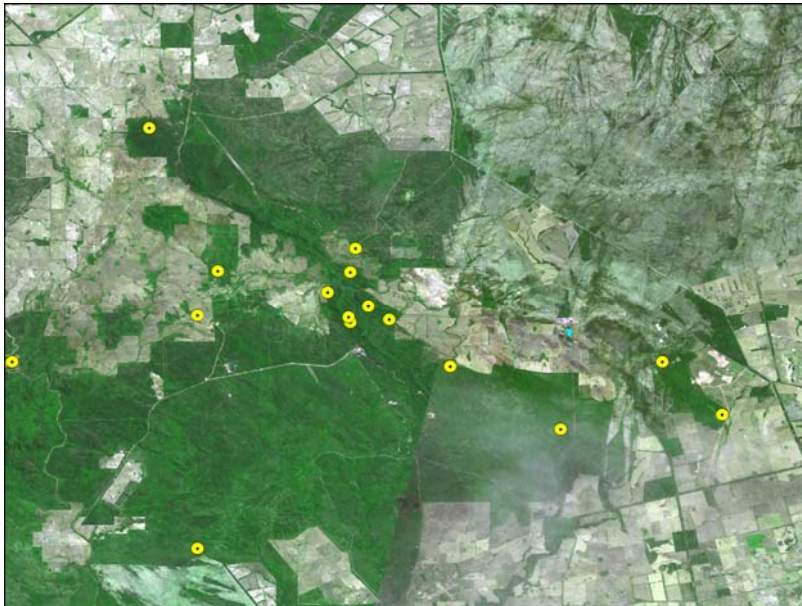


Figure 47. Distribution of *Urodacus novaehollandiae* in the Ravensthorpe Range.

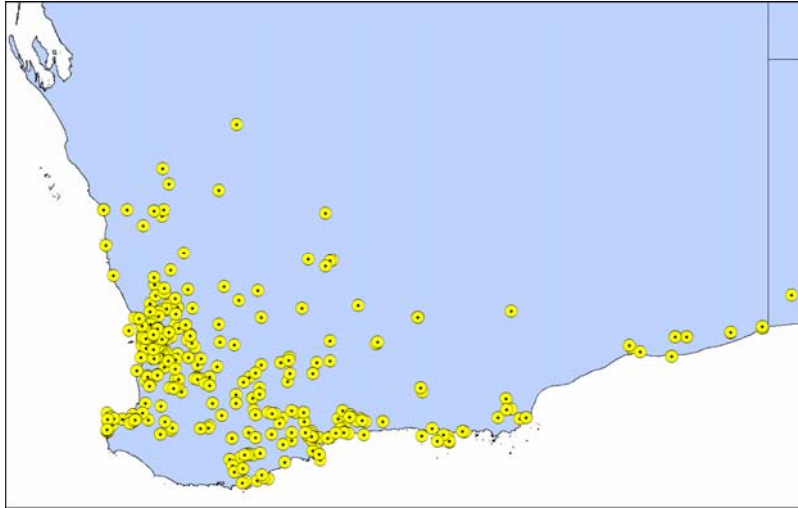


Figure 48. Distribution of *Urodacus novaehollandiae* in southwestern Australia.

Order Araneae

Infraorder Mygalomorphae

At present, it has not been possible to obtain identifications of the mygalomorph spiders collected during the survey. Once these data are to hand, they will be transmitted to the Department of Environment and Conservation.

Infraorder Araneomorphae

Family Selenopidae

Anyphops sp. F

Members of the spider family Selenopidae occurs over much of mainland Australia where they can be found under rocks or under tree bark. There is currently only one named Australian species, *Selenops australiensis* from north-eastern Queensland, but at least 25 new species have been recognised in museum collections, including many species from Western Australia.

Anyphops sp. F (Figure 49) is endemic to the south-coastal region of Western Australia ranging from the Stirling Range National Park to Duke of Orleans Bay (Figure 51). Within the Ravensthorpe Range, it has been found at five sites (Figure 50).



Figure 49. *Anyphops* sp. F, female, dorsal.

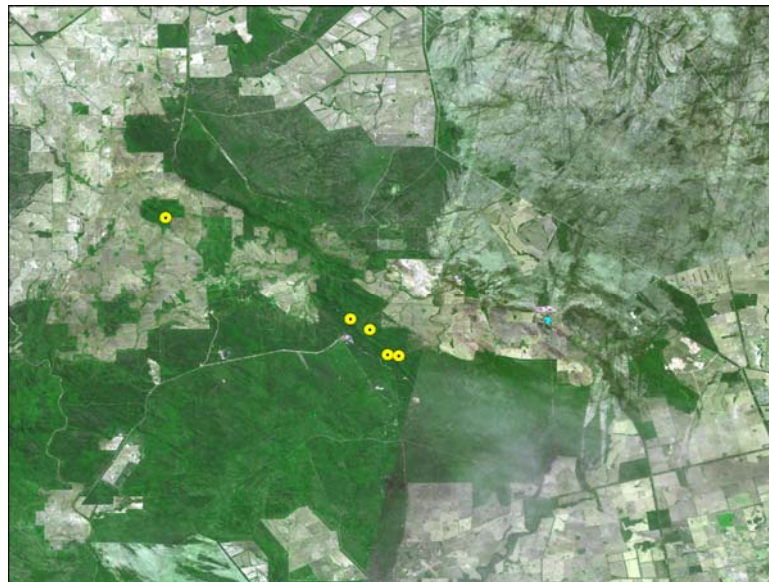


Figure 50. Distribution of *Anyphops* sp. F in the Ravensthorpe Range.

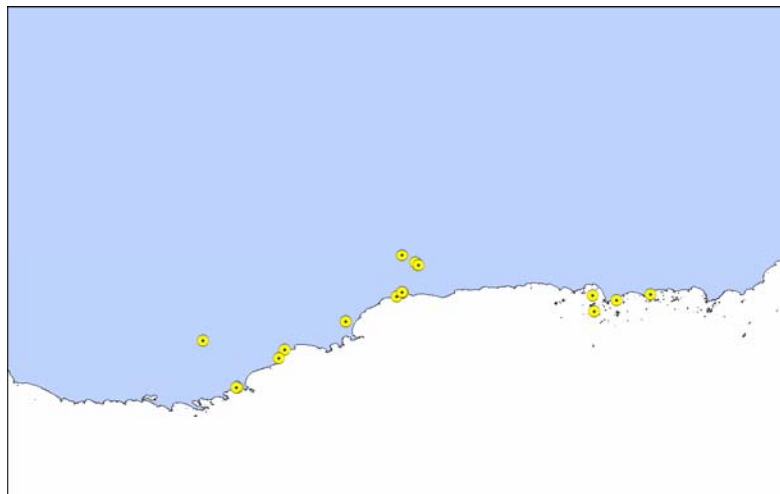


Figure 51. Distribution of *Anyphops* sp. F.

Phylum Mollusca
Class Gastropoda
Order Eupulmonata

At present, it has not been possible to obtain identifications of the snails collected during the survey. Once these data are to hand, they will be transmitted to the Department of Environment and Conservation.

Range ends

Several species of invertebrates treated in this report seem to be at their range ends in the Ravensthorpe Range, including the millipedes *Antichiropus* sp. "Ravensthorpe Range" (Figure 11) and *Atelomastix* sp. P (Figure 17), and the pseudoscorpions *Synsphyronus lathrius* (Figure 26) and *Amblyolpium* sp. "WA1" (Figure 32).

New records

The vast majority of species listed above represent new records from the Ravensthorpe Range.

Terrestrial invertebrate species currently listed as threatened species

Very few terrestrial invertebrates from south-western Australia are listed as threatened species. Those species currently listed are shown in Table 1.

Table 1. Terrestrial invertebrate species from the south coastal region listed in the *Wildlife Conservation (Specially Protected Fauna) Notice 2006*.

Order	Species	Common name	Distribution
Endangered			
Mollusca	Undescribed Rhytidid species (WAM 2295-69)	Stirling Range Rhytidid Snail	Stirling Range National Park
Diplopoda	<i>Cynotelopus notabilis</i>	Western Australian Pill Millipede	South coastal Western Australia
Araneae	<i>Austrarchaea mainae</i>	Western Archaeid Spider	South coastal Western Australia
	<i>Moggridgea tingle</i>	Tingle Trapdoor Spider	South coastal Western Australia
	<i>Moggridgea</i> sp. (BY Main 1990/24, 25)	Stirling Range Trapdoor Spider	Stirling Range National Park
Extinct			
Mollusa	<i>Helicarion castanea</i>		Western Australia (SW coastal)
	<i>Occirhenea georgiana</i>		Geographe Bay Albany area

Despite intensive searches in suitable habitats across Ravensthorpe Range, none of these species were found. Indeed, none of these species are expected to occur with the Ravensthorpe Range.

Areas of high importance for conservation of SRE

Compared with nearby upland areas such as the Stirling Range, Porongurup Range and Mount Manypeaks, the Ravensthorpe Range contains relatively few short-range

endemic invertebrate species. Indeed, only one endemic species was detected during this survey, the millipede *Atelomastix* sp. C. Most survey sites sampled contained no SREs, whereas others had one or species of SRE (Appendix 3). Only five sites were found to possess four or more taxa treated in this survey (Appendix 3): site 40 with 7 species; sites 7 and 48 with 5 species; and sites 18 and 44 with 4 species.

Short-range endemic invertebrate fauna not found in Ravensthorpe Range

Suitable habitat was searched for a range of short-range endemic invertebrates, but some groups that are represented in nearby areas of Western Australia, were not detected, and are presumably absent from the Ravensthorpe Range.

Phylum Onychophora

Only two genera of velvet worms have been found in Western Australia. *Occiperipatoides* and its sole species, *O. gilesii*, is restricted to the Darling Range and some peripheral areas (Reid 2002). *Kumbadjena* is found in the wetter forests of south-western Australia. Three species are currently named but additional taxa are found in the region (Reid 2002). These taxa are very difficult to distinguish based upon museum specimens, as properly preserved fresh material is necessary to distinguish different species. The collation of molecular sequence data will provide invaluable in detecting patterns of cryptic speciation in this obscure animal taxon.

No velvet worm specimens were found in the Ravensthorpe Range survey.

Phylum Arthropoda

Class Arachnida

Order Araneae

Family Archaeidae

Assassin spiders, sometimes known as pelican spiders, are only found in southern Africa, Madagascar and Australia, although fossilised specimens are known from Tertiary deposits from Europe and Burma, and from the Jurassic in Russia.

The Australian fauna, all contained within *Austrarchaea*, consists of three named species from eastern Australia (Forster 1955; Forster and Platnick 1984), and two named species from south-western Australia (Harvey 2002a; Platnick 1991). *Austrarchaea mainae* has been found in Torndirrup National Park (Platnick 1991), but

recent surveys suggests that it may be slightly more widespread along the south coast (Harvey and Rix, unpublished data). *Austrarchaea robinsi* is only known from a single location within the eastern side of the Stirling Range National Park (Harvey 2002a).

No archaeid spiders were found during the Ravensthorpe Range survey.

Class Diplopoda

Order Sphaerotheriida

Family Sphaerotheriidae

Two species of pill millipedes have been found in south-western Australia, both of which are short-range endemics. *Cynotelopus notabilis* occurs in the wet karri forests ranging from Deep River to Torbay (Main *et al.* 2002). They can be locally common in leaf litter and under logs, but are listed as threatened species due to their small range and possible susceptibility to fire. *Epicyllosoma sarahae* has been recently described from the Cape Arid National Park (Moir and Harvey 2008) and has been nominated as a threatened species under Western Australian legislation.

No pill millipede specimens were found in the Ravensthorpe Range survey.

Acknowledgements

This study was funded by the Department of Environment and Conservation, kindly assisted by Dr Neil Gibson. Melinda Moir, Sarah Comer, Janet Newell, R. Walker and M. Lyons assisted with the field component of the study. Karen Edward (*Atelomastix* millipedes) and Erich Volschenk (scorpions) assisted with the identification of some fauna.

References

- Acosta, L.E. (1990). El genero *Cercophonius* Peters, 1861 (Scorpiones, Bothriuridae). *Boletín de la Sociedad de Biología de Concepción* **61**: 7-27.
- Attems, C.G. (1911). Myriopoda exkl. Scolopendridae. In Michaelsen, W. and Hartmeyer, R. (eds), *Die Fauna Südwest-Australiens*, vol. **3**: 147-204. Gustav Fischer: Jena.
- Beier, M. (1966). On the Pseudoscorpionidea of Australia. *Australian Journal of Zoology* **14**: 275-303.
- Chapman, A. and Newbey, K.R. (1995). A biological survey of the Fitzgerald area, Western Australia. *CALMScience, Supplement* **3**.
- Craig, G.F. (1995). *Native plants of the Ravensthorpe region*. Ravensthorpe Wildflower Show: Ravensthorpe.
- Dick, R.S. (1975). A map of the climate of Australia, according to Koppen's principles of definition. *Queensland Journal of Geography, 3rd series* **3**: 33-69.
- Edward, K.L. and Harvey, M.S. (2008). Short-range endemism in hypogean environments: the pseudoscorpion genera *Tyrannochthonius* and *Lagynochthonius* (Pseudoscorpiones: Chthoniidae) in the semiarid zone of Western Australia. *Invertebrate Systematics* **22**: 259-293.
- Edward, K.L. and Harvey, M.S. (in preparation). Extreme short-range endemism in the south-western Australian millipede genus *Atelomastix* (Diplopoda: Spirostreptida: Iulomorphidae) *Invertebrate Systematics*.
- Forster, R.R. (1955). Spiders of the family Archaeidae from Australia and New Zealand. *Transactions of the Royal Society of New Zealand* **83**: 391-403.
- Forster, R.R. and Platnick, N.I. (1984). A review of the archaeid spiders and their relatives, with notes on the limits of the superfamily Palpimanoidea (Arachnida, Araneae). *Bulletin of the American Museum of Natural History* **178**: 1-106.
- Harvey, M.S. (1986). The Australian Geogarypidae, new status, with a review of the generic classification (Arachnida: Pseudoscorpionida). *Australian Journal of Zoology* **34**: 753-778.
- Harvey, M.S. (1987). A revision of the genus *Synsphyronus* Chamberlin (Garypidae: Pseudoscorpionida: Arachnida). *Australian Journal of Zoology, Supplementary Series* **126**: 1-99.
- Harvey, M.S. (1991a). *Catalogue of the Pseudoscorpionida*. Manchester University Press: Manchester.

- Harvey, M.S. (1991b). The cavernicolous pseudoscorpions (Chelicerata: Pseudoscorpionida) of Cape Range, Western Australia. *Records of the Western Australian Museum* **15**: 487-502.
- Harvey, M.S. (2002a). A new species of *Austrarchaea* (Araneae: Archaeidae) from Western Australia. *Records of the Western Australian Museum* **21**: 35-37.
- Harvey, M.S. (2002b). Short-range endemism in the Australian fauna: some examples from non-marine environments. *Invertebrate Systematics* **16**: 555-570.
- Harvey, M.S. (2008). Pseudoscorpions of the World, version 1.1. Western Australian Museum, Perth. <http://www.museum.wa.gov.au/arachnids/pseudoscorpions/>.
- Harvey, M.S. and Mould, L.G. (2006). A new troglomorphic species of *Austrochthonius* (Pseudoscorpiones: Chthoniidae) from Australia, with remarks on *Chthonius caecus*. *Records of the Western Australian Museum* **23**: 205-211.
- Hennessy, K.J., Suppiah, R. and Page, C.M. (1999). Australian rainfall changes, 1910-1995. *Australian Meteorological Magazine* **48**: 1-13.
- Hopper, S.D., Harvey, M.S., Chappill, J.A., Main, A.R. and Main, B.Y. (1996). The Western Australian biota as Gondwanan heritage - a review. In Hopper, S.D., Chappill, J.A, Harvey, M.S. and George, A.S. (eds), *Gondwanan heritage: past, present and future of the Western Australian biota*, vol.: 1-46. Surrey Beatty & Sons: Chipping Norton.
- Jeekel, C.A.W. (1985). Millipedes from Australia, 5: Australiosomatini from South Australia, with a note on the status of *Polydesmus innotatus* Karsch, and first record of a Mediterranean julid in Australia (Diplopoda: Polydesmida, Paradoxosomatidae and Julida, Julidae). *Records of the South Australian Museum* **19**: 19-37.
- Koch, L.E. (1977). The taxonomy, geographic distribution and evolutionary radiation of Australo-Papuan scorpions. *Records of the Western Australian Museum* **5**: 83-367.
- Main, A.R. and Main, B.Y. (1991). Report on the Southern Forest region of Western Australia. Unpublished Report to the Australian Heritage Commission: Canberra.
- Main, B.Y. (1956). Taxonomy and biology of the genus *Isometroides* Keyserling (Scorpionida). *Australian Journal of Zoology* **4**: 158-164.

- Main, B.Y., Harvey, M.S. and Waldock, J.M. (2002). The distribution of the Western Australian pill millipede, *Cynotelopus notabilis* Jeekel (Sphaerotheriidae). *Records of the Western Australian Museum* **20**: 383-385.
- Moir, M.L. and Harvey, M.S. (2008). Discovery of the pill millipede genus *Epicyliosoma* (Diplopoda: Sphaerotheriida: Sphaerotheriidae) in Western Australia, with the description of a new species. *Records of the Western Australian Museum* **24**: 113-119.
- Newbey, K.R. (1985). *An introduction to the geology of the Stirling Range-Ravensthorpe area*. Jerramungup cell of the Priority Country Areas Programme: Perth
- Platnick, N.I. (1991). On Western Australian *Austrarchaea* (Araneae, Archaeidae). *Bulletin of the British Arachnological Society* **8**: 259-261.
- Reid, A. (2002). Western Australian Onychophora (Peripatopsidae): a new genus, *Kumbadjena*, for a southern species-complex. *Records of the Western Australian Museum* **21**: 129-155.
- Volschenk, E.S. and Prendini, L. (2008). *Aops oncodactylus*, gen. et sp. nov., the first troglobitic urodacid (Urodacidae : Scorpiones), with a re-assessment of cavernicolous, troglobitic and troglomorphic scorpions. *Invertebrate Systematics* **22**: 235-257.
- Volschenk, E.S., Smith, G.T. and Harvey, M.S. (2000). A new species of *Urodacus* from Western Australia, with descriptive notes on *Urodacus megamastigus* (Scorpiones: Urodacidae). *Records of the Western Australian Museum* **20**: 57-68.
- Yeates, D.K., Harvey, M.S. and Austin, A.D. (2004). New estimates for terrestrial arthropod species-richness in Australia. *Records of the South Australian Museum, Monograph Series* **7**: 231-241.

APPENDIX 1 - RAVENSTHORPE RANGE SHORT-RANGE ENDEMIC SURVEY, SITES

SITE No SHORT	SITE NO	SITE	LATITUDE	LONGITUDE	LATDEC	LONGDEC	ALTITUDE	VEGETATION
1	Site WAM 01	Ravensthorpe Range South	33°37'09.06"S	120°09'58.01"E	-33.6191	120.1661	228 m	Melaleuca; mallee eucalypts; Hakea; Thomasia; grasses & sedges; bottle brush
2	Site WAM 02	Ravensthorpe Range South	33°37'06.07"S	120°09'45.07"E	-33.6166	120.1500	242 m	rose mallee; Banksia; Acacia; Leptospermum
3	Site WAM 03	Ravensthorpe Range South	33°38'07.05"S	120°10'47.04"E	-33.6352	120.1797	225 m	eucalypts; Lasiosipetalum; Melaleuca; Lepidosperma; reeds
4	Site WAM 04	Ravensthorpe Range South	33°38'04.08"S	120°10'51.06"E	-33.6344	120.1808		mallee eucalypts
5	Site WAM 05	Ravensthorpe Range South	33°38'02.05"S	120°10'55.03"E	-33.6339	120.1820	235 m	rose mallee; Dryandra; Grevillea; Banksia; Acacia; Leptospermum
6	Site WAM 06	Ravensthorpe Range South	33°36'59.00"S	120°09'38.00"E	-33.6163	120.1606	253 m	rose mallee; Hakea; mallee eucalypts; Grevillea; Acacia; Dryandra; sedges/rushes; Darwinia; Banksia
7	Site WAM 07	Ravensthorpe Range South, Mt Desmond Lookout	33°36'51.02"S	120°09'08.08"E	-33.6141	120.1522	336 m	Banksia; Acacia; mallee eucalypts; bottle brush; Dryandra;
8	Site WAM 08	Ravensthorpe Range South	33°36'10.03"S	120°10'15.05"E	-33.6027	120.1708	341 m	Hakea; Melaleuca; rose mallee; sedges; Herbertia; Lasiosipetalum
9	Site WAM 09	Ravensthorpe Range South	33°36'15.06"S	120°10'22.00"E	-33.6041	120.1728	163 m	Melaleuca; mallee eucalypts; sedges; Acacia; Lepidosperma
10	Site WAM 10	Ravensthorpe Range South	33°38'16.03"S	120°10'55.00"E	-33.6377	120.1819	221 m	rose mallee; Acacia; mallee eucalypts; Lasiosipetalum; Hakea; Daviesia; Leptospermum; Banksia; sedges/grasses
11	Site WAM 11	Ravensthorpe Range South	33°38'11.04"S	120°12'12.07"E	-33.6364	120.2034	156 m	mallee eucalypts; sedges/grasses; Acacia; Leptospermum; Allocasuarina
12	Site WAM 12	Ravensthorpe Range South	33°38'12.00"S	120°12'53.00"E	-33.6366	120.2147	120 m	mallee eucalypts; Melaleuca
13	Site WAM 13	Ravensthorpe Range South	33°38'53.09"S	120°11'23.06"E	-33.6480	120.1897	217 m	Andersonia; Banksia; mallee eucalypts; rose mallee; Melaleuca; grasses/sedges; Hakea; Leptospermum; Grevillea; Isopogon
14	Site WAM 14	Ravensthorpe Range South	33°41'53.07"S	120°18'00.02"E	-33.6980	120.3000	115 m	Acacia; mallee eucalypts; grasses/sedges; Leptospermum; rose mallee; Leucopogon; Banksia; Dryandra; Allocasuarina
15	Site WAM 15	Ravensthorpe Range South	33°40'54.07"S	120°17'38.07"E	-33.6816	120.2939	111 m	mallee eucalypts; Acacia; Grevillea
16	Site WAM 16	Ravensthorpe Range South	33°40'57.00"S	120°17'39.02"E	-33.6825	120.2942	94 m	Clemantis; Acacia; sedges; Melaleuca; Allocasuarina; Carpobrotus; Melaleuca
17	Site WAM 17	Ravensthorpe Range South	33°40'35.02"S	120°17'59.08"E	-33.6764	120.2997	81 m	mallee eucalypts; sedges/grasses; Acacia; Carpobrotus; Leptospermum; Melaleuca
18	Site WAM 18	Ravensthorpe Range South	33°38'33.05"S	120°15'49.00"E	-33.6425	120.2636	131 m	Leptospermum; Acacia; Hakea; creeping vine; Melaleuca
19	Site WAM 19	Ravensthorpe Range South	33°43'39.00"S	120°14'05.09"E	-33.7275	120.2347	156 m	Acacia; mallee eucalypts; Hakea; Allocasuarina; grasses/sedges; Grevillea; bottle brush
20	Site WAM 20	Ravensthorpe Range South	33°34'35.04"S	120°13'45.02"E	-33.5764	120.2292	177 m	finger mallee; Banksia; Hakea; Dryandra; grasses; rose mallee; Grevillea
21	Site WAM 21	Ravensthorpe Range South	33°43'38.02"S	120°13'24.06"E	-33.7272	120.2234	149 m	Banksia; Hakea; Acacia; mallee eucalypts; Andersonia; Leptospermum; Melaleuca
22	Site WAM 22	Ravensthorpe Range South	33°38'31.00"S	120°13'50.00"E	-33.6419	120.2306	130 m	Melaleuca; bottle brush; sedges; mosses; Leptospermum
23	Site WAM 23	Ravensthorpe Range South	33°34'34.09"S	120°08'29.03"E	-33.5761	120.1414	155 m	mallee eucalypts, Leptospermum, Acacia, Carpobrotus, quandong
24	Site WAM 24	Ravensthorpe Range North, Overshot Hill	33°32'02.02"S	120°00'52.04"E	-33.5338	120.0145	303 m	mallee eucalypts, Acacia, Melaleuca
25	Site WAM 25	Ravensthorpe Range North, Overshot Hill	33°32'04.02"S	120°00'46.03"E	-33.5344	120.0128	308 m	mallee eucalypts, Leptospermum, Acacia, Leucopogon
26	Site WAM 26	Ravensthorpe Range North, Overshot Hill	33°32'04.02"S	120°00'46.03"E	-33.5344	120.0128	350 m	Hakea, Dryandra, Melaleuca, rose mallee, Acacia
27	Site WAM 27	Ravensthorpe Range North	33°27'38.09"S	120°00'00.00"E	-33.4605	120.0000	358 m	Melaleuca; mallee eucalypts; Banksia; grasses/sedges; Acacia; Hakea
28	Site WAM 28	Ravensthorpe Range North	33°27'30.00"S	120°00'00.00"E	-33.4583	120.0000	340 m	Melaleuca; Hakea; Acacia; Leptospermum; grasses/sedges
29	Site WAM 29	Ravensthorpe Range North	33°33'12.01"S	120°07'12.04"E	-33.5533	120.1200	346 m	mallee eucalypts; Acacia; Hakea
30	Site WAM 30	Ravensthorpe Range North	33°32'35.07"S	120°06'17.00"E	-33.5430	120.1047	279 m	mallee eucalypts; bottle brush; Acacia; Hakea
31	Site WAM 31	Ravensthorpe Range North	33°31'49.09"S	120°05'51.06"E	-33.5303	120.0975	318 m	mallee eucalypts; Acacia; Hakea; Banksia
32	Site WAM 32	Ravensthorpe Range North	33°31'58.06"S	120°05'01.06"E	-33.5327	120.0836	354 m	mallee eucalypts; Hakea
33	Site WAM 33	Ravensthorpe Range North, Archer Drive Lookout	33°30'55.03"S	120°02'52.05"E	-33.5152	120.0478	383 m	mallee eucalypts; Acacia; Andersonia; Sedges; Hakea; Banksia
34	Site WAM 34	Ravensthorpe Range North	33°33'06.01"S	120°08'48.06"E	-33.5516	120.1467	150 m	Melaleuca; mallee eucalypts; Acacia; Leptospermum; sedges
35	Site WAM 35	Ravensthorpe Range North	33°30'17.03"S	120°02'01.05"E	-33.5047	120.0336	401 m	mallee eucalypts; Hakea; grasses/sedges; pea plants; creeping vine
36	Site WAM 36	Ravensthorpe Range North	33°31'13.09"S	120°03'34.01"E	-33.5203	120.0594	387 m	Acacia; Hakea; bottle brush; rose mallee; mallee eucalypts; Dryandra; Banksia; Grevillea
37	Site WAM 37	Ravensthorpe Range North	33°31'31.00"S	120°04'03.00"E	-33.5252	120.0675	314 m	bottle brush; mallee eucalypts; rose mallee; Acacia; grasses/sedges
38	Site WAM 38	Ravensthorpe Range North, Mt McMahon area	33°33'18.05"S	120°06'46.04"E	-33.5550	120.1128	266 m	rose mallee; pea plants; Leptospermum; Melaleuca; mallee eucalypts
39	Site WAM 39	Ravensthorpe Range	33°34'07.01"S	120°08'34.02"E	-33.5686	120.1428	239 m	mallee eucalypts; Acacia; grasses/sedges; pea plant; Hakea; Andersonia
40	Site WAM 40	Ravensthorpe Range South	33°36'18.07"S	120°08'34.05"E	-33.6050	120.1428	319 m	Melaleuca; Banksia; Hakea; grasses/sedges; Acacia; Allocasuarina; rose mallee; Leucopogon
41	Site WAM 41	Ravensthorpe Range South	33°36'40.05"S	120°09'06.00"E	-33.6111	120.1517	313 m	bottle brush; Melaleuca; Banksia; grasses/sedges; mallee eucalypts; rose mallee; Hakea
42	Site WAM 42	Ravensthorpe Range South	33°36'41.40"S	120°09'04.80"E	-33.6115	120.1513	301 m	Melaleuca; mallee eucalypts; Banksia; pea plant
43	Site WAM 43	Ravensthorpe Range South	33°36'42.05"S	120°09'03.00"E	-33.6116	120.1508	312 m	finger mallee; Hakea; grasses/sedges; Melaleuca; Acacia
44	Site WAM 44	Ravensthorpe Range North	33°35'11.09"S	120°08'49.06"E	-33.5864	120.1470	217 m	rose mallee; bottle brush; sedges/grasses; mallee eucalypts; pea plant; Grevillea
45	Site WAM 45	Ravensthorpe Range	33°34'45.07"S	120°09'25.01"E	-33.5791	120.1569	152 m	Bridal creeper; grasses/sedges; Acacia; Hakea; mallee eucalypts
46	Site WAM 46	Ravensthorpe Range North, Jerdacuttup River	33°28'47.00"S	120°05'32.00"E	-33.4797	120.0922	225 m	Melaleuca; Allocasuarina; grasses/sedges; Acacia
47	Site WAM 47	Ravensthorpe Range South	33°38'19.07"S	120°11'16.06"E	-33.6386	120.1878	218 m	Hakea; Melaleuca; Banksia; bottle brush
48	Site WAM 48	Ravensthorpe Range, Ravensthorpe townsite	33°34'04.09"S	120°02'51.05"E	-33.5678	120.0475	210 m	mallee eucalypts; Acacia; grasses/sedges
49	Site WAM 49	Ravensthorpe Range	33°34'59.08"S	120°07'36.07"E	-33.5830	120.1267	201 m	Grevillea; Hakea; mallee eucalypts; pea plant; Melaleuca; sandalwood/quandong
50	Site WAM 50	Ravensthorpe Range South	33°37'05.03"S	120°07'50.07"E	-33.6180	120.1306	215 m	Hakea; Acacia; Allocasuarina; mallee eucalypts; sedges; Dodonea
51	Site WAM 51	Ravensthorpe Range	33°40'16.01"S	120°24'35.05"E	-33.6711	120.4097	153 m	Acacia; mallee eucalypts; Hakea; grasses/sedges; Leptospermum; Xanthorrhoea

52	Site WAM 52	Ravensthorpe Range	33°40'34.01"S	120°23'59.04"E	-33.6761	120.3997	163 m	Banksia; rose mallee; mallee eucalypts; pea plant; Acacia; Leptospermum; Xanthorrhoea
53	Site WAM 53	Ravensthorpe Range	33°39'49.6"S	120°23'12"E	-33.6637	120.3867	158 m	Banksia; rose mallee; mallee eucalypts; Leptospermum; Grevillea; Hakea; Leucopogon
54	Site WAM 54	Ravensthorpe Range	33°39'40.06"S	120°23'02.09"E	-33.6611	120.3839	148 m	Hakea; Acacia; grasses/sedges; Leptospermum; Grevillea; vines
55	Site WAM 55	Ravensthorpe Range North, Mt Short	33°28'47.00"S	119°59'52.00"E	-33.4797	119.9978	371 m	Acacia; Melaleuca; sedges
56	Site WAM 56	Ravensthorpe Range North, near Archer Drive Look	33°30'17"S	120°02'36"E	-33.5047	120.0433	346 m	Dryandra; rose mallee; Acacia; Hakea
57	Site WAM 57	Ravensthorpe Range North, Archer Drive Lookout	33°30'54.00"S	120°02'51.00"E	-33.5150	120.0475	380 m	rose mallee; Acacia; Hakea; Grevillea; Banksia
58	Site WAM 58	Ravensthorpe Range, Smalleys Cutoff	33°31'09"S	120°03'31"E	-33.5192	120.0586	356 m	Melaleuca; Acacia; pea plants
59	Site WAM 59	Ravensthorpe Range	33°31'11"S	120°05'03"E	-33.5197	120.0842	284m	mallee eucalypts; Acacia; grasses/sedges
60	Site WAM 60	Ravensthorpe Range	33°33'29"S	120°07'13"E	-33.5581	120.1203	211 m	Acacia; mallee; grass/sedges; Fabaceae
61	Site WAM 61	Ravensthorpe Range	33°32'56"S	120°06'56"E	-33.5489	120.1156	224 m	mallee; Acacia; Melaleuca
62	Site WAM 62	Ravensthorpe Range North	33°34'03.00"S	120°07'58.00"E	-33.5675	120.1328	202 m	mallee eucalypts; Acacia; sedges/grasses
63	Site WAM 63	Ravensthorpe Range North	33°31'06"S	120°03'26"E	-33.5183	120.0572	380 m	mallee eucalypts; sedges; Acacia
64	Site WAM 64	Ravensthorpe Range North, Jerdacuttup River	33°29'21.00"S	120°08'02.00"E	-33.4891	120.1339	210 m	Allocasuarina; Leptospermum; Xanthorrhoea; Acacia
65	Site WAM 65	Ravensthorpe Range South	33°35'35.00"S	120°09'21.00"E	-33.5930	120.1558	222 m	Banksia; bottle brush; mallee eucalypts
66	Site WAM 66	Ravensthorpe Range South	33°36'04.00"S	120°08'29.00"E	-33.6011	120.1414	255 m	mallee eucalypts; Acacia; sedges/grasses
67	Site WAM 67	Ravensthorpe Range	33°31'33"S	120°04'03"E	-33.5258	120.0675	362 m	sedges/grasses; mallee eucalypts; Hakea; pea plants; orchids
68	Site WAM 68	Ravensthorpe Range	33°32'30"S	120°05'35"E	-33.5417	120.0931	265 m	bottle brush; Hakea; mallee; pea plant; Acacia; rose mallee
69	Site WAM 69	Ravensthorpe Range South	33°34'51.00"S	120°08'17.00"E	-33.5808	120.1381	176 m	mallee eucalypts; Grevillea; Acacia; quandong
70	Site WAM 70	Ravensthorpe Range South	33°36'02.00"S	120°10'13.00"E	-33.6005	120.1703	190 m	Acacia; mallee eucalypts; Melaleuca; bottle brush; Leptospermum
71	Site WAM 71	Ravensthorpe Range South	33°37'20"S	120°09'23"E	-33.6222	120.1564	267 m	Dryandra; Melaleuca; rose mallee; Xanthorrhoea; Banksia
72	Site WAM 72	Ravensthorpe Range South	33°38'11.00"S	120°12'12.00"E	-33.6363	120.2033	145 m	mallee eucalypts; Acacia; grasses/sedges; Hakea
73	Site WAM 73	Ravensthorpe Range South	33°38'29.00"S	120°11'05.00"E	-33.6413	120.1847	229 m	mallee eucalypts; rose mallee; Leptospermum; Dryandra; Acacia; Grevillea; grasses/sedges
74	Site WAM 74	Ravensthorpe Range South	33°38'40.00"S	120°11'22.00"E	-33.6444	120.1894	219 m	mallee eucalypts; grasses/sedges; Acacia; Leucopogon; Andersonia; pea plants
75	Site WAM 75	Ravensthorpe Range South	33°39'04"S	120°11'33"E	-33.6511	120.1925	211 m	Melaleuca; Banksia; pea plant; rose mallee; mallee eucalypts; Dryandra
76	Site WAM 76	Ravensthorpe Range South	33°40'20"S	120°13'30"E	-33.6717	120.2250	160 m	Melaleuca; mallee eucalypts; Acacia; pea plant; Grevillea
77	Site WAM 77	Ravensthorpe Range South	33°39'18"S	120°13'58"E	-33.6550	120.2328	100 m	Melaleuca; Darwinia; Acacia; sedges/grasses; mallee eucalypts
78	Site WAM 78	Ravensthorpe Range South	33°39'12"S	120°12'00"E	-33.6533	120.2000	86 m	Acacia; mallee; Melaleuca; bridal creeper
79	Site WAM 79	Ravensthorpe Range	33°31'01"S	120°05'11"E	-33.5169	120.0864	277 m	mallee eucalypts; Melaleuca; sedges; Xanthorrhoea; Grevillea; Acacia; Hakea; quandong

APPENDIX 2 - RAVENSTHORPE RANGE SHORT-RANGE ENDEMIC SURVEY, SPECIMENS COLLECTED

PREFIX	REGNO	CLASS	ORDER	INFRAORDER	FAMILY	GENUS	SPECIES	AUTHORITY	SITE
T	81239	Arachnida	Araneae	Araneomorphae	Amaurobiidae				Ravensthorpe Range South (Site WAM 11)
T	81238	Arachnida	Araneae	Araneomorphae	Amaurobiidae				Ravensthorpe Range South (Site WAM 04)
T	81240	Arachnida	Araneae	Araneomorphae	Amaurobiidae				Ravensthorpe Range South (Site WAM 17)
T	81221	Arachnida	Araneae	Araneomorphae	Amaurobiidae				Ravensthorpe Range North (Site WAM 30)
T	81175	Arachnida	Araneae	Araneomorphae	Amaurobiidae				Ravensthorpe Range South (Site WAM 09)
T	81243	Arachnida	Araneae	Araneomorphae	Araneidae				Ravensthorpe Range South (Site WAM 19)
T	77367	Arachnida	Araneae	Araneomorphae	Araneidae	<i>Cyclosa</i>	<i>trilobata</i>	(Urquhart, 1885)	Ravensthorpe Range, Jerdacuttup River crossing (Site WAM 03)
T	77380	Arachnida	Araneae	Araneomorphae	Araneidae	<i>Dolophones</i>	sp. (VWF755)		Ravensthorpe Range (Site WAM 02)
T	81167	Arachnida	Araneae	Araneomorphae	Araneidae	<i>Eriophora</i>	<i>heroine</i>	(L. Koch, 1871)	Ravensthorpe Range South (Site WAM 07)
T	81225	Arachnida	Araneae	Araneomorphae	Clubionidae				Ravensthorpe Range South (Site WAM 04)
T	81213	Arachnida	Araneae	Araneomorphae	Clubionidae	<i>Cheiracanthium</i>			Ravensthorpe Range South (Site WAM 01)
T	81194	Arachnida	Araneae	Araneomorphae	Desidae	<i>Forsterina</i>			Ravensthorpe Range South, Mt Desmond Lookout (Site WAM 07)
T	81188	Arachnida	Araneae	Araneomorphae	Desidae	<i>Forsterina</i>			Ravensthorpe Range North, Archer Drive Lookout (Site WAM 33)
T	81193	Arachnida	Araneae	Araneomorphae	Desidae	<i>Forsterina</i>			Ravensthorpe Range Middle (Site WAM 39)
T	81195	Arachnida	Araneae	Araneomorphae	Desidae	<i>Forsterina</i>			Ravensthorpe Range North (Site WAM 37)
T	81180	Arachnida	Araneae	Araneomorphae	Desidae	<i>Forsterina</i>			Ravensthorpe Range North, Overshot Hill (Site WAM 25)
T	81196	Arachnida	Araneae	Araneomorphae	Desidae	<i>Forsterina</i>			Ravensthorpe Range North, Archer Drive Lookout (Site WAM 33)
T	81189	Arachnida	Araneae	Araneomorphae	Desidae	<i>Phryganoporus</i>	<i>candidus</i>	(L. Koch, 1872)	Ravensthorpe Range North (Site WAM 26)
T	81251	Arachnida	Araneae	Araneomorphae	Desidae	<i>Phryganoporus</i>	<i>candidus</i>	(L. Koch, 1872)	Ravensthorpe Range South (Site WAM 16)
T	81183	Arachnida	Araneae	Araneomorphae	Dictynidae				Ravensthorpe Range North, Jerdacuttup River (Site WAM 46)
T	81212	Arachnida	Araneae	Araneomorphae	Dictynidae				Ravensthorpe Range South (Site WAM 08)
T	81186	Arachnida	Araneae	Araneomorphae	Dictynidae				Ravensthorpe Range North, Jerdacuttup River (Site WAM 46)
T	81201	Arachnida	Araneae	Araneomorphae	Dictynidae				Ravensthorpe Range North (Site WAM 37)
T	81218	Arachnida	Araneae	Araneomorphae	Dictynidae	<i>Badumna</i>			Ravensthorpe Range South (Site WAM 12)
T	81220	Arachnida	Araneae	Araneomorphae	Dictynidae	<i>Badumna</i>			Ravensthorpe Range South (Site WAM 50)
T	81219	Arachnida	Araneae	Araneomorphae	Dictynidae	<i>Badumna</i>			Ravensthorpe Range North (Site WAM 30)
T	81215	Arachnida	Araneae	Araneomorphae	Gnaphosidae				Ravensthorpe Range South (Site WAM 08)
T	81245	Arachnida	Araneae	Araneomorphae	Gnaphosidae	<i>Encoptarthria</i>			Ravensthorpe Range North (Site WAM 31)
T	81204	Arachnida	Araneae	Araneomorphae	Lamponidae	<i>Asadipus</i>	<i>kunderang</i>	Platnick, 2000	Ravensthorpe Range North (Site WAM 34)
T	81230	Arachnida	Araneae	Araneomorphae	Linyphiidae				Ravensthorpe Range South (Site WAM 11)
T	81226	Arachnida	Araneae	Araneomorphae	Linyphiidae				Ravensthorpe Range South (Site WAM 19)
T	81164	Arachnida	Araneae	Araneomorphae	Lycosidae	<i>Arctoria</i>	<i>cingulipes</i>	Simon, 1909	Ravensthorpe Range North (Site WAM 35)
T	81163	Arachnida	Araneae	Araneomorphae	Lycosidae	<i>Arctoria</i>	<i>cingulipes</i>	Simon, 1909	Ravensthorpe Range North (Site WAM 37)
T	81166	Arachnida	Araneae	Araneomorphae	Lycosidae	<i>Tasmanicosa</i>	<i>leuckartii</i>	(Thorell, 1870)	Ravensthorpe Range North (Site WAM 34)
T	81165	Arachnida	Araneae	Araneomorphae	Lycosidae	<i>Venator</i>	sp. (VWF143)		Ravensthorpe Range Middle (Site WAM 44)
T	81258	Arachnida	Araneae	Araneomorphae	Micropholcommatidae				Ravensthorpe Range South (Site WAM 16)
T	81253	Arachnida	Araneae	Araneomorphae	Micropholcommatidae				Ravensthorpe Range South (Site WAM 01)
T	81252	Arachnida	Araneae	Araneomorphae	Micropholcommatidae				Ravensthorpe Range South (Site WAM 03)
T	81256	Arachnida	Araneae	Araneomorphae	Micropholcommatidae				Ravensthorpe Range South, Mt Desmond Lookout (Site WAM 07)
T	81255	Arachnida	Araneae	Araneomorphae	Micropholcommatidae				Ravensthorpe Range, Bandalup Hill (Site WAM 53)
T	81254	Arachnida	Araneae	Araneomorphae	Micropholcommatidae				Ravensthorpe Range South (Site WAM 16)
T	81257	Arachnida	Araneae	Araneomorphae	Micropholcommatidae				Ravensthorpe Range South (Site WAM 01)
T	81227	Arachnida	Araneae	Araneomorphae	Mimetidae	<i>Australomimetes</i>	<i>auriocularis</i>	(Hickman, 1929)	Ravensthorpe Range South (Site WAM 04)
T	81231	Arachnida	Araneae	Araneomorphae	Mimetidae	<i>Australomimetes</i>	<i>auriocularis</i>	(Hickman, 1929)	Ravensthorpe Range South (Site WAM 03)
T	81223	Arachnida	Araneae	Araneomorphae	Miturgidae	<i>Mituliodon</i>	<i>tarantulinus</i>	(L. Koch, 1873)	Ravensthorpe Range North (Site WAM 30)
T	81181	Arachnida	Araneae	Araneomorphae	Miturgidae	<i>Mituliodon</i>	<i>tarantulinus</i>	(L. Koch, 1873)	Ravensthorpe Range North, Overshot Hill (Site WAM 25)
T	81217	Arachnida	Araneae	Araneomorphae	Nicodamidae				Ravensthorpe Range, Bandalup Hill (Site WAM 53)
T	81197	Arachnida	Araneae	Araneomorphae	Nicodamidae				Ravensthorpe Range, Bandalup Hill (Site WAM 51)
T	81216	Arachnida	Araneae	Araneomorphae	Nicodamidae				Ravensthorpe Range South (Site WAM 19)
T	81096	Arachnida	Araneae	Araneomorphae	Oonopidae				Ravensthorpe Range South (Site WAM 21)
T	81237	Arachnida	Araneae	Araneomorphae	Salticidae				Ravensthorpe Range South (Site WAM 11)
T	81214	Arachnida	Araneae	Araneomorphae	Salticidae	<i>Adoxotoma</i>			Ravensthorpe Range South (Site WAM 50)
T	81185	Arachnida	Araneae	Araneomorphae	Salticidae	<i>Clynotis</i>	<i>viduus</i>	(C.L. Koch, 1846)	Ravensthorpe Range North, Jerdacuttup River (Site WAM 46)
T	81207	Arachnida	Araneae	Araneomorphae	Salticidae	<i>Lycidas</i>	<i>chlorophthalmus</i>	(Simon, 1909)	Ravensthorpe Range Middle, near townsite (Site WAM 48)
T	81187	Arachnida	Araneae	Araneomorphae	Salticidae	<i>Opisthonus</i>			Ravensthorpe Range North, Jerdacuttup River (Site WAM 46)

T	81200	Arachnida	Araneae	Araneomorphae	Segestriidae					Ravensthorpe Range North, Mt McMahon area (Site WAM 38)
T	81199	Arachnida	Araneae	Araneomorphae	Segestriidae					Ravensthorpe Range South, Mt Chester (Site WAM 40)
T	81250	Arachnida	Araneae	Araneomorphae	Segestriidae					Ravensthorpe Range South (Site WAM 16)
T	80848	Arachnida	Araneae	Araneomorphae	Selenopidae	<i>Anyphops</i>	sp. F			Ravensthorpe Range South (Site WAM 01)
T	81019	Arachnida	Araneae	Araneomorphae	Selenopidae	<i>Anyphops</i>	sp. F			Ravensthorpe Range South (Site WAM 47)
T	80996	Arachnida	Araneae	Araneomorphae	Selenopidae	<i>Anyphops</i>	sp. F			Ravensthorpe Range South (Site WAM 41)
T	80928	Arachnida	Araneae	Araneomorphae	Selenopidae	<i>Anyphops</i>	sp. F			Ravensthorpe Range North, Overshot Hill (Site WAM 25)
T	80925	Arachnida	Araneae	Araneomorphae	Selenopidae	<i>Anyphops</i>	sp. F			Ravensthorpe Range North, Overshot Hill (Site WAM 25)
T	80926	Arachnida	Araneae	Araneomorphae	Selenopidae	<i>Anyphops</i>	sp. F			Ravensthorpe Range North, Overshot Hill (Site WAM 25)
T	80881	Arachnida	Araneae	Araneomorphae	Selenopidae	<i>Anyphops</i>	sp. F			Ravensthorpe Range South (Site WAM 10)
T	80927	Arachnida	Araneae	Araneomorphae	Selenopidae	<i>Anyphops</i>	sp. F			Ravensthorpe Range North, Overshot Hill (Site WAM 25)
T	80874	Arachnida	Araneae	Araneomorphae	Selenopidae	<i>Anyphops</i>	sp. (juv.)			Ravensthorpe Range South (Site WAM 08)
T	80947	Arachnida	Araneae	Araneomorphae	Selenopidae	<i>Anyphops</i>	sp. (juv.)			Ravensthorpe Range North (Site WAM 30)
T	80991	Arachnida	Araneae	Araneomorphae	Selenopidae	<i>Anyphops</i>	sp. (juv.)			Ravensthorpe Range South, Mt Chester (Site WAM 40)
T	81315	Arachnida	Araneae	Araneomorphae	Selenopidae	<i>Anyphops</i>	sp. (juv.)			Ravensthorpe Range North, Mt Short (Site WAM 55)
T	81283	Arachnida	Araneae	Araneomorphae	Selenopidae	<i>Anyphops</i>	sp. (juv.)			Ravensthorpe Range South (Site WAM 73)
T	81210	Arachnida	Araneae	Araneomorphae	Sparassidae	<i>Neosparassus</i>				Ravensthorpe Range Middle (Site WAM 44)
T	81192	Arachnida	Araneae	Araneomorphae	Theridiidae					Ravensthorpe Range, Bandalup Hill (Site WAM 53)
T	81247	Arachnida	Araneae	Araneomorphae	Theridiidae					Ravensthorpe Range South (Site WAM 10)
T	81232	Arachnida	Araneae	Araneomorphae	Theridiidae					Ravensthorpe Range South (Site WAM 19)
T	81248	Arachnida	Araneae	Araneomorphae	Theridiidae	<i>Dipoena</i>				Ravensthorpe Range South (Site WAM 10)
T	81179	Arachnida	Araneae	Araneomorphae	Theridiidae	<i>Episinus</i>				Ravensthorpe Range South (Site WAM 09)
T	81235	Arachnida	Araneae	Araneomorphae	Theridiidae	<i>Steotoda</i>				Ravensthorpe Range South (Site WAM 22)
T	81203	Arachnida	Araneae	Araneomorphae	Theridiidae	<i>Steotoda</i>				Ravensthorpe Range North, Archer Drive Lookout (Site WAM 33)
T	81202	Arachnida	Araneae	Araneomorphae	Theridiidae	<i>Steotoda</i>				Ravensthorpe Range North, Mt McMahon area (Site WAM 38)
T	81246	Arachnida	Araneae	Araneomorphae	Theridiidae	<i>Trigonobothrys</i>				Ravensthorpe Range North (Site WAM 31)
T	81249	Arachnida	Araneae	Araneomorphae	Thomisidae					Ravensthorpe Range South (Site WAM 10)
T	81177	Arachnida	Araneae	Araneomorphae	Thomisidae	<i>Tharpyna</i>				Ravensthorpe Range South (Site WAM 09)
T	81222	Arachnida	Araneae	Araneomorphae	Thomisidae	<i>Tharpyna</i>				Ravensthorpe Range South (Site WAM 12)
T	81233	Arachnida	Araneae	Araneomorphae	Toxopidae	<i>Laestryognes</i>				Ravensthorpe Range South (Site WAM 08)
T	81184	Arachnida	Araneae	Araneomorphae	Trochanteriidae					Ravensthorpe Range North, Jerdacuttup River (Site WAM 46)
T	81244	Arachnida	Araneae	Araneomorphae	Trochanteriidae	<i>Longrita</i>	<i>insidiosa</i>	(Simon, 1908)		Ravensthorpe Range North, Archer Drive Lookout (Site WAM 33)
T	81234	Arachnida	Araneae	Araneomorphae	Trochanteriidae	<i>Trachycosmus</i>	<i>sculptilis</i>	(Simon, 1893)		Ravensthorpe Range South (Site WAM 16)
T	81211	Arachnida	Araneae	Araneomorphae	Zodariidae					Ravensthorpe Range North (Site WAM 37)
T	81190	Arachnida	Araneae	Araneomorphae	Zodariidae					Ravensthorpe Range North (Site WAM 26)
T	81242	Arachnida	Araneae	Araneomorphae	Zodariidae	<i>Habronestes</i>				Ravensthorpe Range South (Site WAM 15)
T	81241	Arachnida	Araneae	Araneomorphae	Zodariidae	<i>Habronestes</i>				Ravensthorpe Range South (Site WAM 18)
T	81182	Arachnida	Araneae	Araneomorphae	Zodariidae	<i>Neostorena</i>				Ravensthorpe Range North (Site WAM 27)
T	81178	Arachnida	Araneae	Araneomorphae	Zoridae					Ravensthorpe Range North (Site WAM 32)
T	81229	Arachnida	Araneae	Araneomorphae	Zoridae					Ravensthorpe Range South (Site WAM 11)
T	81228	Arachnida	Araneae	Araneomorphae	Zoridae					Ravensthorpe Range South (Site WAM 14)
T	81205	Arachnida	Araneae	Araneomorphae	Zoridae					Ravensthorpe Range South (Site WAM 14)
T	81198	Arachnida	Araneae	Araneomorphae	Zoridae					Ravensthorpe Range, Bandalup Hill (Site WAM 52)
T	81236	Arachnida	Araneae	Araneomorphae	Zoridae					Ravensthorpe Range South (Site WAM 16)
T	81224	Arachnida	Araneae	Araneomorphae	Zoridae					Ravensthorpe Range South (Site WAM 13)
T	81191	Arachnida	Araneae	Araneomorphae	Zoridae	<i>Argoctenus</i>				Ravensthorpe Range North (Site WAM 28)
T	81176	Arachnida	Araneae	Araneomorphae	Zoridae	<i>Argoctenus</i>				Ravensthorpe Range South (Site WAM 10)
T	81208	Arachnida	Araneae	Araneomorphae	Zoridae	<i>Argoctenus</i>				Ravensthorpe Range North (Site WAM 34)
T	81042	Arachnida	Araneae	Mygalomorphae						Ravensthorpe Range, Bandalup Hill (Site WAM 52)
T	81001	Arachnida	Araneae	Mygalomorphae						Ravensthorpe Range Middle (Site WAM 44)
T	81036	Arachnida	Araneae	Mygalomorphae						Ravensthorpe Range, Bandalup Hill (Site WAM 51)
T	80998	Arachnida	Araneae	Mygalomorphae						Ravensthorpe Range South (Site WAM 43)
T	81032	Arachnida	Araneae	Mygalomorphae						Ravensthorpe Range South (Site WAM 50)
T	81047	Arachnida	Araneae	Mygalomorphae						Ravensthorpe Range, Bandalup Hill (Site WAM 54)
T	81038	Arachnida	Araneae	Mygalomorphae						Ravensthorpe Range, Bandalup Hill (Site WAM 51)
T	81016	Arachnida	Araneae	Mygalomorphae						Ravensthorpe Range South (Site WAM 47)
T	81030	Arachnida	Araneae	Mygalomorphae						Ravensthorpe Range Middle (Site WAM 49)
T	81008	Arachnida	Araneae	Mygalomorphae						Ravensthorpe Range North (Site WAM 46)
T	80979	Arachnida	Araneae	Mygalomorphae						Ravensthorpe Range North (Site WAM 37)
T	81018	Arachnida	Araneae	Mygalomorphae						Ravensthorpe Range South (Site WAM 47)
T	80973	Arachnida	Araneae	Mygalomorphae						Ravensthorpe Range North (Site WAM 35)
T	81005	Arachnida	Araneae	Mygalomorphae						Ravensthorpe Range Middle (Site WAM 45)
T	81017	Arachnida	Araneae	Mygalomorphae						Ravensthorpe Range South (Site WAM 47)
T	81021	Arachnida	Araneae	Mygalomorphae						Ravensthorpe Range Middle, near townsite (Site WAM 48)

T	81023	Arachnida	Araneae	Mygalomorphae	Ravensthorpe Range Middle, near townsite (Site WAM 48)
T	81011	Arachnida	Araneae	Mygalomorphae	Ravensthorpe Range North (Site WAM 46)
T	80989	Arachnida	Araneae	Mygalomorphae	Ravensthorpe Range South, Mt Chester (Site WAM 40)
T	81006	Arachnida	Araneae	Mygalomorphae	Ravensthorpe Range Middle (Site WAM 45)
T	81268	Arachnida	Araneae	Mygalomorphae	Ravensthorpe Range South (Site WAM 10)
T	80895	Arachnida	Araneae	Mygalomorphae	Ravensthorpe Range South (Site WAM 16)
T	80916	Arachnida	Araneae	Mygalomorphae	Ravensthorpe Range South (Site WAM 23)
T	80937	Arachnida	Araneae	Mygalomorphae	Ravensthorpe Range North (Site WAM 28)
T	81022	Arachnida	Araneae	Mygalomorphae	Ravensthorpe Range Middle, near townsite (Site WAM 48)
T	81037	Arachnida	Araneae	Mygalomorphae	Ravensthorpe Range, Bandalup Hill (Site WAM 51)
T	81277	Arachnida	Araneae	Mygalomorphae	Ravensthorpe Range North (Site WAM 37)
T	80918	Arachnida	Araneae	Mygalomorphae	Ravensthorpe Range North, Overshot Hill (Site WAM 24)
T	81273	Arachnida	Araneae	Mygalomorphae	Ravensthorpe Range South (Site WAM 18)
T	81280	Arachnida	Araneae	Mygalomorphae	Ravensthorpe Range South (Site WAM 72)
T	81281	Arachnida	Araneae	Mygalomorphae	Ravensthorpe Range South (Site WAM 73)
T	81271	Arachnida	Araneae	Mygalomorphae	Ravensthorpe Range North, Overshot Hill (Site WAM 24)
T	81272	Arachnida	Araneae	Mygalomorphae	Ravensthorpe Range North, Overshot Hill (Site WAM 24)
T	81278	Arachnida	Araneae	Mygalomorphae	Ravensthorpe Range South (Site WAM 12)
T	81275	Arachnida	Araneae	Mygalomorphae	Ravensthorpe Range North (Site WAM 62)
T	81269	Arachnida	Araneae	Mygalomorphae	Ravensthorpe Range South (Site WAM 65)
T	81270	Arachnida	Araneae	Mygalomorphae	Ravensthorpe Range South (Site WAM 69)
T	81279	Arachnida	Araneae	Mygalomorphae	Ravensthorpe Range South (Site WAM 70)
T	81282	Arachnida	Araneae	Mygalomorphae	Ravensthorpe Range South (Site WAM 74)
T	81276	Arachnida	Araneae	Mygalomorphae	Ravensthorpe Range North (Site WAM 37)
T	80923	Arachnida	Araneae	Mygalomorphae	Ravensthorpe Range North, Overshot Hill (Site WAM 24)
T	80885	Arachnida	Araneae	Mygalomorphae	Ravensthorpe Range South (Site WAM 11)
T	80877	Arachnida	Araneae	Mygalomorphae	Ravensthorpe Range South (Site WAM 09)
T	80939	Arachnida	Araneae	Mygalomorphae	Ravensthorpe Range North (Site WAM 29)
T	80888	Arachnida	Araneae	Mygalomorphae	Ravensthorpe Range South (Site WAM 12)
T	80855	Arachnida	Araneae	Mygalomorphae	Ravensthorpe Range South (Site WAM 04)
T	80864	Arachnida	Araneae	Mygalomorphae	Ravensthorpe Range South, Mt Desmond Lookout (Site WAM 07)
T	80896	Arachnida	Araneae	Mygalomorphae	Ravensthorpe Range South (Site WAM 16)
T	80886	Arachnida	Araneae	Mygalomorphae	Ravensthorpe Range South (Site WAM 11)
T	80930	Arachnida	Araneae	Mygalomorphae	Ravensthorpe Range North, Overshot Hill (Site WAM 25)
T	80924	Arachnida	Araneae	Mygalomorphae	Ravensthorpe Range North, Overshot Hill (Site WAM 24)
T	80929	Arachnida	Araneae	Mygalomorphae	Ravensthorpe Range North, Overshot Hill (Site WAM 25)
T	80915	Arachnida	Araneae	Mygalomorphae	Ravensthorpe Range South (Site WAM 23)
T	80922	Arachnida	Araneae	Mygalomorphae	Ravensthorpe Range North, Overshot Hill (Site WAM 24)
T	80884	Arachnida	Araneae	Mygalomorphae	Ravensthorpe Range South (Site WAM 11)
T	80856	Arachnida	Araneae	Mygalomorphae	Ravensthorpe Range South (Site WAM 05)
T	80878	Arachnida	Araneae	Mygalomorphae	Ravensthorpe Range South (Site WAM 09)
T	80899	Arachnida	Araneae	Mygalomorphae	Ravensthorpe Range South (Site WAM 17)
T	80921	Arachnida	Araneae	Mygalomorphae	Ravensthorpe Range North, Overshot Hill (Site WAM 24)
T	80958	Arachnida	Araneae	Mygalomorphae	Ravensthorpe Range North (Site WAM 32)
T	81046	Arachnida	Araneae	Mygalomorphae	Ravensthorpe Range, Bandalup Hill (Site WAM 54)
T	80936	Arachnida	Araneae	Mygalomorphae	Ravensthorpe Range North (Site WAM 28)
T	81015	Arachnida	Araneae	Mygalomorphae	Ravensthorpe Range South (Site WAM 47)
T	80990	Arachnida	Araneae	Mygalomorphae	Ravensthorpe Range South, Mt Chester (Site WAM 40)
T	80952	Arachnida	Araneae	Mygalomorphae	Ravensthorpe Range North (Site WAM 31)
T	80948	Arachnida	Araneae	Mygalomorphae	Ravensthorpe Range North (Site WAM 30)
T	80951	Arachnida	Araneae	Mygalomorphae	Ravensthorpe Range North (Site WAM 31)
T	80959	Arachnida	Araneae	Mygalomorphae	Ravensthorpe Range North (Site WAM 32)
T	80984	Arachnida	Araneae	Mygalomorphae	Ravensthorpe Range North, Mt McMahon area (Site WAM 38)
T	80917	Arachnida	Araneae	Mygalomorphae	Ravensthorpe Range North, Overshot Hill (Site WAM 24)
T	80941	Arachnida	Araneae	Mygalomorphae	Ravensthorpe Range North (Site WAM 29)
T	80920	Arachnida	Araneae	Mygalomorphae	Ravensthorpe Range North, Overshot Hill (Site WAM 24)
T	80919	Arachnida	Araneae	Mygalomorphae	Ravensthorpe Range North, Overshot Hill (Site WAM 24)
T	80865	Arachnida	Araneae	Mygalomorphae	Ravensthorpe Range South, Mt Desmond Lookout (Site WAM 07)
T	80940	Arachnida	Araneae	Mygalomorphae	Ravensthorpe Range North (Site WAM 29)
T	80909	Arachnida	Araneae	Mygalomorphae	Ravensthorpe Range South (Site WAM 22)
T	80972	Arachnida	Araneae	Mygalomorphae	Ravensthorpe Range North (Site WAM 35)
T	80902	Arachnida	Araneae	Mygalomorphae	Ravensthorpe Range South (Site WAM 18)
T	80964	Arachnida	Araneae	Mygalomorphae	Ravensthorpe Range North, Archer Drive Lookout (Site WAM 33)
T	78544	Arachnida	Araneae	Mygalomorphae	Ravensthorpe Range, Overshot Hill Nature Reserve, in dry stream bed (Site V
				Actinopodidae	<i>Missulena</i>

T	81274	Arachnida	Araneae	Mygalomorphae	Barychelidae				Ravensthorpe Range North, Jerdacuttup River (Site WAM 46)
T	81316	Arachnida	Araneae	Mygalomorphae	Barychelidae				Ravensthorpe Range South (Site WAM 16)
T	81041	Arachnida	Araneae	Mygalomorphae	Barychelidae				Ravensthorpe Range, Bandalup Hill (Site WAM 52)
T	80980	Arachnida	Araneae	Mygalomorphae	Barychelidae				Ravensthorpe Range North (Site WAM 37)
T	81040	Arachnida	Araneae	Mygalomorphae	Barychelidae				Ravensthorpe Range, Bandalup Hill (Site WAM 52)
T	81010	Arachnida	Araneae	Mygalomorphae	Barychelidae				Ravensthorpe Range North (Site WAM 46)
T	78545	Arachnida	Araneae	Mygalomorphae	Nemesiidae				Ravensthorpe Range, Overshot Hill Nature Reserve, in dry stream bed (Site WAM 46)
T	86793	Arachnida	Pseudoscorpiones		Atemnidae	<i>Oratemnus</i>			Ravensthorpe Range (Site WAM 67)
T	54176	Arachnida	Pseudoscorpiones		Cheliferidae	<i>Protochelifer</i>			Ravensthorpe Range South (Site WAM 09)
T	86796	Arachnida	Pseudoscorpiones		Cheliferidae	<i>Protochelifer</i>			Ravensthorpe Range (Site WAM 18)
T	81307	Arachnida	Pseudoscorpiones		Cheliferidae	<i>Protochelifer</i>			Ravensthorpe Range North (Site WAM 62)
T	81313	Arachnida	Pseudoscorpiones		Cheliferidae	<i>Protochelifer</i>			Ravensthorpe Range South, Mt Desmond Lookout (Site WAM 07)
T	81026	Arachnida	Pseudoscorpiones		Cheliferidae	<i>Protochelifer</i>			Ravensthorpe Range Middle, near townsite (Site WAM 48)
T	80868	Arachnida	Pseudoscorpiones		Cheliferidae	<i>Protochelifer</i>			Ravensthorpe Range South, Mt Desmond Lookout (Site WAM 07)
T	54178	Arachnida	Pseudoscorpiones		Chernetidae	<i>Nesidiochernes</i>			Ravensthorpe Range South (Site WAM 16)
T	81044	Arachnida	Pseudoscorpiones		Chthoniidae	<i>Austrochthonius</i>			Ravensthorpe Range, Bandalup Hill (Site WAM 53)
T	80975	Arachnida	Pseudoscorpiones		Chthoniidae	<i>Austrochthonius</i>			Ravensthorpe Range North (Site WAM 35)
T	86791	Arachnida	Pseudoscorpiones		Chthoniidae	<i>Austrochthonius</i>			Ravensthorpe Range (Site WAM 74)
T	86789	Arachnida	Pseudoscorpiones		Chthoniidae	<i>Austrochthonius</i>			Ravensthorpe Range (Site WAM 59)
T	54309	Arachnida	Pseudoscorpiones		Chthoniidae	<i>Austrochthonius</i>			Ravensthorpe Range South, Mt Chester (Site WAM 40)
T	86795	Arachnida	Pseudoscorpiones		Chthoniidae	<i>Austrochthonius</i>			Ravensthorpe Range (Site WAM 72)
T	80853	Arachnida	Pseudoscorpiones		Chthoniidae	<i>Austrochthonius</i>			Ravensthorpe Range South (Site WAM 03)
T	86786	Arachnida	Pseudoscorpiones		Chthoniidae	<i>Austrochthonius</i>			Ravensthorpe Range South, Mt Desmond Lookout (Site WAM 07)
T	81305	Arachnida	Pseudoscorpiones		Chthoniidae	<i>Austrochthonius</i>			Ravensthorpe Range North (Site WAM 59)
T	81314	Arachnida	Pseudoscorpiones		Chthoniidae	<i>Austrochthonius</i>			Ravensthorpe Range South (Site WAM 18)
T	81309	Arachnida	Pseudoscorpiones		Chthoniidae	<i>Austrochthonius</i>			Ravensthorpe Range North, Jerdacuttup River (Site WAM 64)
T	81312	Arachnida	Pseudoscorpiones		Chthoniidae	<i>Austrochthonius</i>			Ravensthorpe Range North (Site WAM 67)
T	80879	Arachnida	Pseudoscorpiones		Chthoniidae	<i>Austrochthonius</i>			Ravensthorpe Range South (Site WAM 09)
T	80982	Arachnida	Pseudoscorpiones		Chthoniidae	<i>Austrochthonius</i>			Ravensthorpe Range North (Site WAM 37)
T	80956	Arachnida	Pseudoscorpiones		Chthoniidae	<i>Austrochthonius</i>			Ravensthorpe Range North (Site WAM 31)
T	80907	Arachnida	Pseudoscorpiones		Chthoniidae	<i>Austrochthonius</i>			Ravensthorpe Range South (Site WAM 21)
T	80849	Arachnida	Pseudoscorpiones		Chthoniidae	<i>Austrochthonius</i>			Ravensthorpe Range South (Site WAM 01)
T	80898	Arachnida	Pseudoscorpiones		Chthoniidae	<i>Austrochthonius</i>			Ravensthorpe Range South (Site WAM 16)
T	54310	Arachnida	Pseudoscorpiones		Chthoniidae	<i>Lagynochthonius</i>			Ravensthorpe Range South, Mt Chester (Site WAM 40)
T	54177	Arachnida	Pseudoscorpiones		Chthoniidae	<i>Lagynochthonius australicus</i>	(Beier, 1966)		Ravensthorpe Range South (Site WAM 01)
T	86792	Arachnida	Pseudoscorpiones		Chthoniidae	<i>Lagynochthonius australicus</i>	(Beier, 1966)		Ravensthorpe Range (Site WAM 67)
T	86785	Arachnida	Pseudoscorpiones		Chthoniidae	<i>Lagynochthonius australicus</i>	(Beier, 1966)		Ravensthorpe Range South, Mt Desmond Lookout (Site WAM 07)
T	86794	Arachnida	Pseudoscorpiones		Chthoniidae	<i>Lagynochthonius australicus</i>	(Beier, 1966)		Ravensthorpe Range (Site WAM 72)
T	86790	Arachnida	Pseudoscorpiones		Chthoniidae	<i>Lagynochthonius australicus</i>	(Beier, 1966)		Ravensthorpe Range (Site WAM 48)
T	54179	Arachnida	Pseudoscorpiones		Chthoniidae	<i>Lagynochthonius australicus</i>	(Beier, 1966)		Ravensthorpe Range South (Site WAM 16)
T	86797	Arachnida	Pseudoscorpiones		Chthoniidae	<i>Lagynochthonius australicus</i>	(Beier, 1966)		Ravensthorpe Range (Site WAM 18)
T	81311	Arachnida	Pseudoscorpiones		Chthoniidae	<i>Lagynochthonius australicus</i>	(Beier, 1966)		Ravensthorpe Range South (Site WAM 74)
T	81306	Arachnida	Pseudoscorpiones		Chthoniidae	<i>Lagynochthonius australicus</i>	(Beier, 1966)		Ravensthorpe Range South, near Mt Chester (Site WAM 66)
T	80961	Arachnida	Pseudoscorpiones		Chthoniidae	<i>Lagynochthonius australicus</i>	(Beier, 1966)		Ravensthorpe Range North (Site WAM 32)
T	80966	Arachnida	Pseudoscorpiones		Garypidae	<i>Synsphyronus lathrius</i>	Harvey, 1987		Ravensthorpe Range North, Archer Drive Lookout (Site WAM 33)
T	81286	Arachnida	Pseudoscorpiones		Garypidae	<i>Synsphyronus lathrius</i>	Harvey, 1987		Ravensthorpe Range South (Site WAM 79)
T	81287	Arachnida	Pseudoscorpiones		Garypidae	<i>Synsphyronus lathrius</i>	Harvey, 1987		Ravensthorpe Range South (Site WAM 79)
T	80967	Arachnida	Pseudoscorpiones		Garypidae	<i>Synsphyronus lathrius</i>	Harvey, 1987		Ravensthorpe Range North, Archer Drive Lookout (Site WAM 33)
T	80992	Arachnida	Pseudoscorpiones		Garypidae	<i>Synsphyronus mimulus</i>	Chamberlin, 1943		Ravensthorpe Range South, Mt Chester (Site WAM 40)
T	81284	Arachnida	Pseudoscorpiones		Garypidae	<i>Synsphyronus mimulus</i>	Chamberlin, 1943		Ravensthorpe Range South (Site WAM 15)
T	81285	Arachnida	Pseudoscorpiones		Garypidae	<i>Synsphyronus mimulus</i>	Chamberlin, 1943		Ravensthorpe Range North, Mt Short (Site WAM 55)
T	81003	Arachnida	Pseudoscorpiones		Garypidae	<i>Synsphyronus mimulus</i>	Chamberlin, 1943		Ravensthorpe Range Middle (Site WAM 44)
T	81007	Arachnida	Pseudoscorpiones		Garypidae	<i>Synsphyronus mimulus</i>	Chamberlin, 1943		Ravensthorpe Range Middle (Site WAM 45)
T	80993	Arachnida	Pseudoscorpiones		Garypidae	<i>Synsphyronus mimulus</i>	Chamberlin, 1943		Ravensthorpe Range South, Mt Chester (Site WAM 40)
T	86787	Arachnida	Pseudoscorpiones		Garypinidae	<i>Amblyolpium</i>	sp. WA1		Ravensthorpe Range Middle (Site WAM 48)
T	81308	Arachnida	Pseudoscorpiones		Garypinidae	<i>Amblyolpium</i>	sp. WA1		Ravensthorpe Range, Ravensthorpe Townsite (Site WAM 48)
T	81310	Arachnida	Pseudoscorpiones		Geogarypidae	<i>Geogarypus taylori</i>	Harvey, 1986		Ravensthorpe Range South (Site WAM 72)
T	80995	Arachnida	Pseudoscorpiones		Geogarypidae	<i>Geogarypus taylori</i>	Harvey, 1986		Ravensthorpe Range South, Mt Chester (Site WAM 40)
T	54311	Arachnida	Pseudoscorpiones		Olpidae	<i>indet.</i>			Ravensthorpe Range South, Mt Chester (Site WAM 40)
T	86788	Arachnida	Pseudoscorpiones		Olpidae	<i>Beierolpium bornemisszai</i>	(Beier, 1966)		Ravensthorpe Range, Bandalup Hill (Site WAM 53)
T	85047	Arachnida	Scorpiones		Bothriuridae	<i>Cercophonius sulcatus</i>	Kraepelin, 1908		Ravensthorpe Range South, Mt Desmond Lookout (Site WAM 07)
T	80999	Arachnida	Scorpiones		Bothriuridae	<i>Cercophonius sulcatus</i>	Kraepelin, 1908		Ravensthorpe Range Middle (Site WAM 44)
T	80986	Arachnida	Scorpiones		Bothriuridae	<i>Cercophonius sulcatus</i>	Kraepelin, 1908		Ravensthorpe Range North, Mt McMahon area (Site WAM 38)
T	81033	Arachnida	Scorpiones		Bothriuridae	<i>Cercophonius sulcatus</i>	Kraepelin, 1908		Ravensthorpe Range South (Site WAM 50)

T	80985	Arachnida	Scorpiones	Bothriuridae	<i>Cercophonius</i>	<i>sulcatus</i>	Kraepelin, 1908	Ravensthorpe Range North, Mt McMahon area (Site WAM 38)
T	80942	Arachnida	Scorpiones	Bothriuridae	<i>Cercophonius</i>	<i>sulcatus</i>	Kraepelin, 1908	Ravensthorpe Range North (Site WAM 29)
T	81000	Arachnida	Scorpiones	Buthidae	<i>Isometroides</i>			Ravensthorpe Range Middle (Site WAM 44)
T	81009	Arachnida	Scorpiones	Buthidae	<i>Isometroides</i>			Ravensthorpe Range North (Site WAM 46)
T	81002	Arachnida	Scorpiones	Buthidae	<i>Lychas</i>	sp. A		Ravensthorpe Range Middle (Site WAM 44)
T	81266	Arachnida	Scorpiones	Buthidae	<i>Lychas</i>	sp. A		Ravensthorpe Range South (Site WAM 18)
T	81267	Arachnida	Scorpiones	Buthidae	<i>Lychas</i>	sp. A		Ravensthorpe Range North, Jerdacuttup River (Site WAM 46)
T	80931	Arachnida	Scorpiones	Buthidae	<i>Lychas</i>	sp. A		Ravensthorpe Range North, Overshot Hill (Site WAM 25)
T	81264	Arachnida	Scorpiones	Buthidae	<i>Lychas</i>	sp. A		Ravensthorpe Range South (Site WAM 73)
T	80887	Arachnida	Scorpiones	Urodacidae	<i>Urodacus</i>	<i>novaeollandiae</i>	Peters, 1861	Ravensthorpe Range South (Site WAM 12)
T	80935	Arachnida	Scorpiones	Urodacidae	<i>Urodacus</i>	<i>novaeollandiae</i>	Peters, 1861	Ravensthorpe Range North (Site WAM 27)
T	81031	Arachnida	Scorpiones	Urodacidae	<i>Urodacus</i>	<i>novaeollandiae</i>	Peters, 1861	Ravensthorpe Range Middle (Site WAM 49)
T	81035	Arachnida	Scorpiones	Urodacidae	<i>Urodacus</i>	<i>novaeollandiae</i>	Peters, 1861	Ravensthorpe Range, Bandalup Hill (Site WAM 51)
T	80971	Arachnida	Scorpiones	Urodacidae	<i>Urodacus</i>	<i>novaeollandiae</i>	Peters, 1861	Ravensthorpe Range North (Site WAM 34)
T	81261	Arachnida	Scorpiones	Urodacidae	<i>Urodacus</i>	<i>novaeollandiae</i>	Peters, 1861	Ravensthorpe Range North (Site WAM 34)
T	81024	Arachnida	Scorpiones	Urodacidae	<i>Urodacus</i>	<i>novaeollandiae</i>	Peters, 1861	Ravensthorpe Range Middle, near townsite (Site WAM 48)
T	81265	Arachnida	Scorpiones	Urodacidae	<i>Urodacus</i>	<i>novaeollandiae</i>	Peters, 1861	Ravensthorpe Range South (Site WAM 15)
T	81260	Arachnida	Scorpiones	Urodacidae	<i>Urodacus</i>	<i>novaeollandiae</i>	Peters, 1861	Ravensthorpe Range North (Site WAM 34)
T	81262	Arachnida	Scorpiones	Urodacidae	<i>Urodacus</i>	<i>novaeollandiae</i>	Peters, 1861	Ravensthorpe Range South, near Mt Chester (Site WAM 66)
T	81263	Arachnida	Scorpiones	Urodacidae	<i>Urodacus</i>	<i>novaeollandiae</i>	Peters, 1861	Ravensthorpe Range South, Mt Chester (Site WAM 40)
T	81259	Arachnida	Scorpiones	Urodacidae	<i>Urodacus</i>	<i>novaeollandiae</i>	Peters, 1861	Ravensthorpe Range Middle (Site WAM 65)
T	80987	Arachnida	Scorpiones	Urodacidae	<i>Urodacus</i>	<i>novaeollandiae</i>	Peters, 1861	Ravensthorpe Range Middle (Site WAM 39)
T	80934	Arachnida	Scorpiones	Urodacidae	<i>Urodacus</i>	<i>novaeollandiae</i>	Peters, 1861	Ravensthorpe Range North (Site WAM 27)
T	80871	Arachnida	Scorpiones	Urodacidae	<i>Urodacus</i>	<i>novaeollandiae</i>	Peters, 1861	Ravensthorpe Range South (Site WAM 08)
T	80969	Arachnida	Scorpiones	Urodacidae	<i>Urodacus</i>	<i>novaeollandiae</i>	Peters, 1861	Ravensthorpe Range North (Site WAM 34)
T	80954	Arachnida	Scorpiones	Urodacidae	<i>Urodacus</i>	<i>novaeollandiae</i>	Peters, 1861	Ravensthorpe Range North (Site WAM 31)
T	80953	Arachnida	Scorpiones	Urodacidae	<i>Urodacus</i>	<i>novaeollandiae</i>	Peters, 1861	Ravensthorpe Range North (Site WAM 31)
T	80970	Arachnida	Scorpiones	Urodacidae	<i>Urodacus</i>	<i>novaeollandiae</i>	Peters, 1861	Ravensthorpe Range North (Site WAM 34)
T	80873	Arachnida	Scorpiones	Urodacidae	<i>Urodacus</i>	<i>novaeollandiae</i>	Peters, 1861	Ravensthorpe Range South (Site WAM 08)
T	80882	Arachnida	Scorpiones	Urodacidae	<i>Urodacus</i>	<i>novaeollandiae</i>	Peters, 1861	Ravensthorpe Range South (Site WAM 10)
T	80892	Arachnida	Scorpiones	Urodacidae	<i>Urodacus</i>	<i>novaeollandiae</i>	Peters, 1861	Ravensthorpe Range South (Site WAM 15)
T	80872	Arachnida	Scorpiones	Urodacidae	<i>Urodacus</i>	<i>novaeollandiae</i>	Peters, 1861	Ravensthorpe Range South (Site WAM 08)
T	81012	Arachnida	Scorpiones	Urodacidae	<i>Urodacus</i>	<i>novaeollandiae</i>	Peters, 1861	Ravensthorpe Range North (Site WAM 46)
T	80965	Arachnida	Scorpiones	Urodacidae	<i>Urodacus</i>	<i>novaeollandiae</i>	Peters, 1861	Ravensthorpe Range North, Archer Drive Lookout (Site WAM 33)
T	80911	Arachnida	Scorpiones	Urodacidae	<i>Urodacus</i>	<i>novaeollandiae</i>	Peters, 1861	Ravensthorpe Range South (Site WAM 22)
T	80910	Arachnida	Scorpiones	Urodacidae	<i>Urodacus</i>	<i>novaeollandiae</i>	Peters, 1861	Ravensthorpe Range South (Site WAM 22)
T	80912	Arachnida	Scorpiones	Urodacidae	<i>Urodacus</i>	<i>novaeollandiae</i>	Peters, 1861	Ravensthorpe Range South (Site WAM 22)
T	81172	Chilopoda	Scolopendrida	Scolopendridae	<i>Arthrorhabdus</i>			Ravensthorpe Range North, Overshot Hill (Site WAM 25)
T	81171	Chilopoda	Scolopendrida	Scolopendridae	<i>Arthrorhabdus</i>			Ravensthorpe Range South (Site WAM 50)
T	81170	Chilopoda	Scolopendrida	Scolopendridae	<i>Otostigmus</i>			Ravensthorpe Range South, Mt Chester (Site WAM 40)
T	81174	Chilopoda	Scutigera	Scutigera				Ravensthorpe Range South (Site WAM 23)
T	81173	Chilopoda	Scutigera	Scutigera				Ravensthorpe Range South, Mt Chester (Site WAM 40)
T	81043	Diplopoda						Ravensthorpe Range, Bandalup Hill (Site WAM 53)
T	81034	Diplopoda	Polydesmida	Paradoxosomatidae	<i>Antichiropus</i>			Ravensthorpe Range, Bandalup Hill (Site WAM 51)
T	80983	Diplopoda	Polydesmida	Paradoxosomatidae	<i>Antichiropus</i>			Ravensthorpe Range North, Mt McMahon area (Site WAM 38)
T	81290	Diplopoda	Polydesmida	Paradoxosomatidae	<i>Antichiropus</i>			Ravensthorpe Range North (Site WAM 36)
T	81289	Diplopoda	Polydesmida	Paradoxosomatidae	<i>Antichiropus</i>			Ravensthorpe Range North, Mt Short (Site WAM 55)
T	80933	Diplopoda	Polydesmida	Paradoxosomatidae	<i>Antichiropus</i>			Ravensthorpe Range North (Site WAM 27)
T	80977	Diplopoda	Polydesmida	Paradoxosomatidae	<i>Antichiropus</i>			Ravensthorpe Range North (Site WAM 36)
T	80900	Diplopoda	Polydesmida	Paradoxosomatidae	<i>Antichiropus</i>	"Ravensthorpe Range"		Ravensthorpe Range South (Site WAM 17)
T	80949	Diplopoda	Polydesmida	Paradoxosomatidae	<i>Antichiropus</i>	"Ravensthorpe Range"		Ravensthorpe Range North (Site WAM 30)
T	81020	Diplopoda	Polydesmida	Paradoxosomatidae	<i>Antichiropus</i>	"Ravensthorpe Range"		Ravensthorpe Range Middle, near townsite (Site WAM 48)
T	80844	Diplopoda	Polydesmida	Paradoxosomatidae	<i>Antichiropus</i>	"Ravensthorpe Range"		Ravensthorpe Range South (Site WAM 22)
T	80932	Diplopoda	Polydesmida	Paradoxosomatidae	<i>Antichiropus</i>	"Ravensthorpe Range"		Ravensthorpe Range North (Site WAM 27)
T	80901	Diplopoda	Polydesmida	Paradoxosomatidae	<i>Antichiropus</i>	"Ravensthorpe Range"		Ravensthorpe Range South (Site WAM 17)
T	81288	Diplopoda	Polydesmida	Paradoxosomatidae	<i>Antichiropus</i>	"Ravensthorpe Range"		Ravensthorpe Range South (Site WAM 22)
T	80845	Diplopoda	Polydesmida	Paradoxosomatidae	<i>Antichiropus</i>	"Ravensthorpe Range"		Ravensthorpe Range South (Site WAM 22)
T	80950	Diplopoda	Polydesmida	Paradoxosomatidae	<i>Antichiropus</i>	"Ravensthorpe Range"		Ravensthorpe Range North (Site WAM 30)
T	80890	Diplopoda	Polydesmida	Paradoxosomatidae	<i>Antichiropus</i>	"Ravensthorpe Range"		Ravensthorpe Range South (Site WAM 14)
T	81039	Diplopoda	Polydesmida	Paradoxosomatidae	<i>Antichiropus</i>	"Ravensthorpe Range"		Ravensthorpe Range, Bandalup Hill (Site WAM 52)
T	81045	Diplopoda	Polydesmida	Paradoxosomatidae	<i>Antichiropus</i>	"Ravensthorpe Range"		Ravensthorpe Range, Bandalup Hill (Site WAM 54)
T	81029	Diplopoda	Polydesmida	Paradoxosomatidae	<i>Antichiropus</i>	"Ravensthorpe Range"		Ravensthorpe Range Middle (Site WAM 49)
T	80968	Diplopoda	Polydesmida	Paradoxosomatidae	<i>Antichiropus</i>	"Ravensthorpe Range"		Ravensthorpe Range North (Site WAM 34)
T	80867	Diplopoda	Polyxenida					Ravensthorpe Range South, Mt Desmond Lookout (Site WAM 07)

T	80889	Diplopoda	Spirostreptida	lulomorphidae	<i>Atelomastix</i>	sp. P	Ravensthorpe Range South (Site WAM 13)
T	80875	Diplopoda	Spirostreptida	lulomorphidae	<i>Atelomastix</i>	sp. P	Ravensthorpe Range South (Site WAM 09)
T	80897	Diplopoda	Spirostreptida	lulomorphidae	<i>Atelomastix</i>	sp. P	Ravensthorpe Range South (Site WAM 16)
T	80906	Diplopoda	Spirostreptida	lulomorphidae	<i>Atelomastix</i>		Ravensthorpe Range South (Site WAM 21)
T	81293	Diplopoda	Spirostreptida	lulomorphidae	<i>Atelomastix</i>		Ravensthorpe Range South, Mt Desmond Lookout (Site WAM 07)
T	81300	Diplopoda	Spirostreptida	lulomorphidae	<i>Atelomastix</i>		Ravensthorpe Range North (Site WAM 36)
T	81298	Diplopoda	Spirostreptida	lulomorphidae	<i>Atelomastix</i>		Ravensthorpe Range North, Archer Drive Lookout (Site WAM 57)

LATITUDE	LONGITUDE	LATDEC	LONGDEC	ALTITUDE	DTFR	COLLTOR	COLLMETH	HABIT	SPECNUM
33°38'11.04"S	120°12'12.07"E	-33.6364	120.2034	156 m	17/05/2007	Leng, M.C.; Moir, M.L.	hand collected	under rock	1
33°38'04.08"S	120°10'51.06"E	-33.6344	120.1808		15/05/2007	Leng, M.C.; Moir, M.L.	hand collected	under rock	1
33°40'35.02"S	120°17'59.08"E	-33.6764	120.2997	81 m	18/05/2007	Leng, M.C.; Moir, M.L.	hand collected	under rock	1
33°32'35.07"S	120°06'17.00"E	-33.5430	120.1047	279 m	21/05/2007	Leng, M.C.; Moir, M.L.	hand collected	under rock	1
33°36'15.06"S	120°10'22.00"E	-33.6041	120.1728	163 m	16/05/2007	Leng, M.C.; Moir, M.L.	tullgren funnel	leaf litter	1
33°43'39.00"S	120°14'05.09"E	-33.7275	120.2347	156 m	19/05/2007	Leng, M.C.; Moir, M.L.	beating		1
33°33'10"S	120°08'47"E	-33.5527	120.1464		22/11/2006	Moir, M.L.	beat		2
33°30'15"S	120°02'01"E	-33.5041	120.0336		22/11/2006	Moir, M.L.	beat		2
33°36'05.02"S	120°09'08.08"E	-33.6013	120.1522		16/05/2007	Leng, M.C.; Moir, M.L.			1
33°38'04.08"S	120°10'51.06"E	-33.6344	120.1808		15/05/2007	Leng, M.C.; Moir, M.L.	beating		1
33°37'09.06"S	120°09'58.01"E	-33.6191	120.1661	228 m	15/05/2007	Leng, M.C.; Moir, M.L.	tullgren funnel	in leaf litter	1
33°36'51.02"S	120°09'08.08"E	-33.6141	120.1522	336 m	16/05/2007	Leng, M.C.; Moir, M.L.	tullgren funnel	in leaf litter	1
33°30'55.03"S	120°02'52.05"E	-33.5152	120.0478	383 m	22/05/2007	Leng, M.C.; Moir, M.L.	hand collected	under rock	1
33°34'07.01"S	120°08'34.02"E	-33.5686	120.1428	239 m	23/05/2007	Leng, M.C.; Moir, M.L.	hand collected	under rock	1
33°31'48.05"S	120°04'20.07"E	-33.5300	120.0722	314 m	23/05/2007	Leng, M.C.; Moir, M.L.	hand collected	under rock	2
33°32'04.02"S	120°00'46.03"E	-33.5344	120.0128	308 m	20/05/2007	Leng, M.C.; Moir, M.L.	hand collected	under rocks	1
33°30'55.03"S	120°02'52.05"E	-33.5152	120.0478	383 m	22/05/2007	Leng, M.C.; Moir, M.L.	hand collected	under rock	1
33°29'01.07"S	120°00'30.06"E	-33.4836	120.0083	350 m	20/05/2007	Leng, M.C.; Moir, M.L.	hand collected	under rock	1
33°40'57.00"S	120°17'39.02"E	-33.6825	120.2942	94 m	18/05/2007	Leng, M.C.; Moir, M.L.	tullgren funnel	in leaf litter	1
33°29'20.04"S	120°08'01.07"E	-33.4889	120.1336	225 m	25/05/2007	Leng, M.C.; Moir, M.L.	beating		1
33°36'10.03"S	120°10'15.05"E	-33.6027	120.1708	341 m	16/05/2007	Leng, M.C.; Moir, M.L.	beating		1
33°29'20.04"S	120°08'01.07"E	-33.4889	120.1336	225 m	25/05/2007	Leng, M.C.; Moir, M.L.	beating		1
33°31'48.05"S	120°04'20.07"E	-33.5300	120.0722	314 m	23/05/2007	Leng, M.C.; Moir, M.L.	tullgren funnel	in leaf litter	1
33°38'12.05"S	120°12'53.07"E	-33.6366	120.2147	120 m	17/05/2007	Leng, M.C.; Moir, M.L.	hand collected	under rock	1
33°37'05.03"S	120°07'50.07"E	-33.6180	120.1306	215 m	28/05/2007	Leng, M.C.; Moir, M.L.	hand collected	under rock	1
33°32'35.07"S	120°06'17.00"E	-33.5430	120.1047	279 m	21/05/2007	Leng, M.C.; Moir, M.L.	hand collected	under rock	1
33°36'10.03"S	120°10'15.05"E	-33.6027	120.1708	341 m	16/05/2007	Leng, M.C.; Moir, M.L.	hand collected	under rock	1
33°31'41.02"S	120°05'49.09"E	-33.5280	120.0970	318 m	22/05/2007	Leng, M.C.; Moir, M.L.	hand collected	under rock	1
33°33'06.01"S	120°08'48.06"E	-33.5516	120.1467	150 m	22/05/2007	Leng, M.C.; Moir, M.L.	hand collected	under rock	1
33°38'11.04"S	120°12'12.07"E	-33.6364	120.2034	156 m	17/05/2007	Leng, M.C.; Moir, M.L.	beating		1
33°43'39.00"S	120°14'05.09"E	-33.7275	120.2347	156 m	19/05/2007	Leng, M.C.; Moir, M.L.	beating		1
33°30'17.03"S	120°02'01.05"E	-33.5047	120.0336		23/05/2007	Leng, M.C.; Moir, M.L.			1
33°31'48.05"S	120°04'20.07"E	-33.5300	120.0722		23/05/2007	Leng, M.C.; Moir, M.L.			2
33°33'06.01"S	120°08'48.06"E	-33.5516	120.1467		22/05/2007	Leng, M.C.; Moir, M.L.			1
33°35'11.09"S	120°08'49.06"E	-33.5864	120.1470		24/05/2007	Leng, M.C.; Moir, M.L.			1
33°40'57.00"S	120°17'39.02"E	-33.6825	120.2942	94 m	18/05/2007	Leng, M.C.; Moir, M.L.	tullgren funnel	in leaf litter	2
33°37'09.06"S	120°09'58.01"E	-33.6191	120.1661	228 m	15/05/2007	Leng, M.C.; Moir, M.L.	tullgren funnel	in leaf litter	3
33°38'07.05"S	120°10'47.04"E	-33.6352	120.1797	225 m	15/05/2007	Leng, M.C.; Moir, M.L., Comer, S	tullgren funnel	in leaf litter	3
33°36'51.02"S	120°09'08.08"E	-33.6141	120.1522	326 m	16/05/2007	Leng, M.C.; Moir, M.L.	tullgren funnel	in leaf litter	2
33°39'49.06"S	120°23'12.09"E	-33.6636	120.3867	158 m	29/05/2007	Leng, M.C.; Moir, M.L.	tullgren funnel	in leaf litter	4
33°40'57.00"S	120°17'39.02"E	-33.6825	120.2942	94 m	18/05/2007	Leng, M.C.; Moir, M.L.	tullgren funnel	in leaf litter	2
33°37'09.06"S	120°09'58.01"E	-33.6191	120.1661	228 m	15/05/2007	Leng, M.C.; Moir, M.L.	tullgren funnel	in leaf litter	1
33°38'04.08"S	120°10'51.06"E	-33.6344	120.1808		15/05/2007	Leng, M.C.; Moir, M.L.	beating		1
33°38'07.05"S	120°10'47.04"E	-33.6352	120.1797	225 m	15/05/2007	Leng, M.C.; Moir, M.L.	tullgren funnel	in leaf litter	1
33°32'35.07"S	120°06'17.00"E	-33.5430	120.1047	279 m	21/05/2007	Leng, M.C.; Moir, M.L.	hand collected	under rock	1
33°32'04.02"S	120°00'46.03"E	-33.5344	120.0128	308 m	21/05/2007	Leng, M.C.; Moir, M.L.	hand collected	under rocks	1
33°39'49.06"S	120°23'12.09"E	-33.6636	120.3867	158 m	29/05/2007	Leng, M.C.; Moir, M.L.	hand collected	under rock	1
33°40'16.01"S	120°24'35.05"E	-33.6711	120.4097	153 m	29/05/2007	Leng, M.C.; Moir, M.L.	hand collected	under rock	1
33°43'39.00"S	120°14'05.09"E	-33.7275	120.2347	156 m	19/05/2007	Leng, M.C.; Moir, M.L.	hand collected	under rock	1
33°43'38.02"S	120°13'24.06"E	-33.7272	120.2234	179 m	19/05/2007	Leng, M.C.; Moir, M.L.	tullgren funnel	in leaf litter	4
33°38'11.04"S	120°12'12.07"E	-33.6364	120.2034	156 m	17/05/2007	Leng, M.C.; Moir, M.L.	beating		1
33°37'05.03"S	120°07'50.07"E	-33.6180	120.1306	215 m	28/05/2007	Leng, M.C.; Moir, M.L.	hand collected	on rock	1
33°29'20.04"S	120°08'01.07"E	-33.4889	120.1336	225 m	25/05/2007	Leng, M.C.; Moir, M.L.	hand collected	on granite out crop	1
33°34'04.09"S	120°02'51.05"E	-33.5678	120.0475	210 m	28/05/2007	Leng, M.C.; Moir, M.L.	hand collected	on mallee tree trun	1
33°29'20.04"S	120°08'01.07"E	-33.4889	120.1336	225 m	25/05/2007	Leng, M.C.; Moir, M.L.	hand collected	on granite out crop	1

33°33'18.05"S	120°06'46.04"E	-33.5550	120.1128	266 m	23/05/2007	Leng, M.C.; Moir, M.L.	hand collected	under rock	1
33°36'18.07"S	120°08'34.05"E	-33.6050	120.1428	319 m	24/05/2007	Leng, M.C.; Moir, M.L.	hand collected	under rock	2
33°40'57.00"S	120°17'39.02"E	-33.6825	120.2942	94 m	18/05/2007	Leng, M.C.; Moir, M.L.	hand collected	under rock	2
33°37'09.06"S	120°09'58.01"E	-33.6191	120.1661	228 m	15/05/2007	Leng, M.C.; Moir, M.L.	hand collected	under mallee bark	1
33°38'19.07"S	120°11'16.06"E	-33.6386	120.1878	218 m	28/05/2007	Leng, M.C.; Moir, M.L.	hand collected	under rock	1
33°36'40.05"S	120°09'06.00"E	-33.6111	120.1517	313 m	24/05/2007	Leng, M.C.; Moir, M.L.	hand collected	under rock	1
33°32'04.02"S	120°00'46.03"E	-33.5344	120.0128	308 m	20/05/2007	Leng, M.C.; Moir, M.L.	hand collected	under rock	1
33°32'04.02"S	120°00'46.03"E	-33.5344	120.0128	308 m	20/05/2007	Leng, M.C.; Moir, M.L.	hand collected	under rock	1
33°32'04.02"S	120°00'46.03"E	-33.5344	120.0128	308 m	20/05/2007	Leng, M.C.; Moir, M.L.	hand collected	under rock	1
33°38'16.03"S	120°10'46.01"E	-33.6377	120.1795	221 m	17/05/2007	Leng, M.C.; Moir, M.L.	hand collected	under rock	1
33°32'04.02"S	120°00'46.03"E	-33.5344	120.0128	308 m	20/05/2007	Leng, M.C.; Moir, M.L.	hand collected	under rock	1
33°36'10.03"S	120°10'15.05"E	-33.6027	120.1708	341 m	16/05/2007	Leng, M.C.; Moir, M.L.	hand collected	under rock	1
33°32'35.07"S	120°06'17.00"E	-33.5430	120.1047	279 m	21/05/2007	Leng, M.C.; Moir, M.L.	hand collected	under rock	1
33°36'18.07"S	120°08'34.05"E	-33.6050	120.1428	319 m	24/05/2007	Leng, M.C.; Moir, M.L.	hand collected	under rock	1
33°28'47.00"S	119°59'52.00"E	-33.4797	119.9978	371 m	4/09/2007	Leng, M.C.	hand collected	under rock	1
33°38'29.00"S	120°11'05.00"E	-33.6413	120.1847	229 m	15/09/2007	Leng, M.C.; Newell, J.	hand collected	under rock	1
33°35'11.09"S	120°08'49.06"E	-33.5864	120.1470	192 m	24/05/2007	Leng, M.C.; Moir, M.L.	hand collected	under rock	1
33°39'49.06"S	120°23'12.09"E	-33.6636	120.3867	158 m	29/05/2007	Leng, M.C.; Moir, M.L.	tullgren funnel	in leaf litter	1
33°38'16.03"S	120°10'46.01"E	-33.6377	120.1795	221 m	17/05/2007	Leng, M.C.; Moir, M.L.	beating		1
33°43'39.00"S	120°14'05.09"E	-33.7275	120.2347	156 m	19/05/2007	Leng, M.C.; Moir, M.L.	beating		1
33°38'16.03"S	120°10'46.01"E	-33.6377	120.1795	221 m	17/05/2007	Leng, M.C.; Moir, M.L.	beating		1
33°36'15.06"S	120°10'22.00"E	-33.6041	120.1728	163 m	16/05/2007	Leng, M.C.; Moir, M.L.	tullgren funnel	leaf litter	1
33°38'31.06"S	120°13'50.00"E	-33.6419	120.2306	130 m	19/05/2007	Leng, M.C.; Moir, M.L.	beating		1
33°30'55.03"S	120°02'52.05"E	-33.5152	120.0478	383 m	22/05/2007	Leng, M.C.; Moir, M.L.	hand collected	under rock	1
33°33'18.05"S	120°06'46.04"E	-33.5550	120.1128	266 m	23/05/2007	Leng, M.C.; Moir, M.L.	hand collected	under rock	1
33°31'41.02"S	120°05'49.09"E	-33.5280	120.0970	318 m	22/05/2007	Leng, M.C.; Moir, M.L.	tullgren funnel	in leaf litter	1
33°38'16.03"S	120°10'46.01"E	-33.6377	120.1795	221 m	17/05/2007	Leng, M.C.; Moir, M.L.	beating		1
33°36'15.06"S	120°10'22.00"E	-33.6041	120.1728	163 m	16/05/2007	Leng, M.C.; Moir, M.L.	tullgren funnel	leaf litter	1
33°38'12.05"S	120°12'53.07"E	-33.6366	120.2147	120 m	17/05/2007	Leng, M.C.; Moir, M.L.	beating		1
33°36'10.03"S	120°10'15.05"E	-33.6027	120.1708	341 m	16/05/2007	Leng, M.C.; Moir, M.L.	beating		1
33°29'20.04"S	120°08'01.07"E	-33.4889	120.1336	225 m	25/05/2007	Leng, M.C.; Moir, M.L.	hand collected	under bark	1
33°30'55.03"S	120°02'52.05"E	-33.5152	120.0478	383 m	22/05/2007	Leng, M.C.; Moir, M.L.	hand collected	under bark	1
33°43'39.00"S	120°14'05.09"E	-33.7275	120.2347	156 m	19/05/2007	Leng, M.C.; Moir, M.L.	hand collected	under rock	1
33°31'48.05"S	120°04'20.07"E	-33.5300	120.0722	314 m	23/05/2007	Leng, M.C.; Moir, M.L.	tullgren funnel	in leaf litter	1
33°29'01.07"S	120°00'30.06"E	-33.4836	120.0083	350 m	20/05/2007	Leng, M.C.; Moir, M.L.	hand collected	under rock	1
33°40'54.07"S	120°17'38.07"E	-33.6816	120.2939	111 m	18/05/2007	Leng, M.C.; Moir, M.L.	hand collected	under rock	1
33°38'33.05"S	120°15'49.00"E	-33.6425	120.2636	131 m	18/05/2007	Leng, M.C.; Moir, M.L.	hand collected	under rock	1
33°27'38.09"S	120°00'00.00"E	-33.4605	120.0000	358 m	20/05/2007	Leng, M.C.; Moir, M.L.	hand collected	under rocks	1
33°31'58.06"S	120°05'01.06"E	-33.5327	120.0836	354 m	22/05/2007	Leng, M.C.; Moir, M.L.	tullgren funnel	leaf litter	1
33°38'11.04"S	120°12'12.07"E	-33.6364	120.2034	156 m	17/05/2007	Leng, M.C.; Moir, M.L.	beating		1
33°41'53.07"S	120°18'00.02"E	-33.6980	120.3000	115 m	18/05/2007	Leng, M.C.; Moir, M.L.	tullgren funnel	in leaf litter	1
33°41'53.07"S	120°18'00.02"E	-33.6980	120.3000	115 m	18/05/2007	Leng, M.C.; Moir, M.L.	tullgren funnel	in leaf litter	1
33°40'34.01"S	120°23'59.04"E	-33.6761	120.3997	163 m	29/05/2007	Leng, M.C.; Moir, M.L.	hand collected	under rock	1
33°40'57.00"S	120°17'39.02"E	-33.6825	120.2942	94 m	18/05/2007	Leng, M.C.; Moir, M.L.	tullgren funnel	in leaf litter	1
33°38'53.09"S	120°11'23.06"E	-33.6480	120.1897	217 m	17/05/2007	Leng, M.C.; Moir, M.L.	beating		1
33°27'30.00"S	120°00'00.00"E	-33.4583	120.0000	340 m	20/05/2007	Leng, M.C.; Moir, M.L.	tullgren funnel	in leaf litter	1
33°38'16.03"S	120°10'46.01"E	-33.6377	120.1795	221 m	17/05/2007	Leng, M.C.; Moir, M.L.	hand collected	under rocks, leaf li	3
33°33'06.01"S	120°08'48.06"E	-33.5516	120.1467	150 m	22/05/2007	Leng, M.C.; Moir, M.L.	hand collected	under rock	2
33°40'34.01"S	120°23'59.04"E	-33.6761	120.3997	163 m	29/05/2007	Leng, M.C.; Moir, M.L.	hand collected	in burrow	1
33°35'11.09"S	120°08'49.06"E	-33.5864	120.1470	157 m	24/05/2007	Leng, M.C.; Moir, M.L.	hand collected	under rock	1
33°40'16.01"S	120°24'35.05"E	-33.6711	120.4097	213 m	29/05/2007	Leng, M.C.; Moir, M.L.	hand collected	in burrow	1
33°36'42.05"S	120°09'03.00"E	-33.6116	120.1508	312 m	24/05/2007	Leng, M.C.; Moir, M.L.	hand collected	in open burrow	1
33°37'05.03"S	120°07'50.07"E	-33.6180	120.1306	215 m	28/05/2007	Leng, M.C.; Moir, M.L.	hand collected	in open burrow	1
33°39'40.06"S	120°23'02.09"E	-33.6611	120.3839	148 m	29/05/2007	Leng, M.C.; Moir, M.L.	hand collected	in burrow	1
33°40'16.01"S	120°24'35.05"E	-33.6711	120.4097	153 m	29/05/2007	Leng, M.C.; Moir, M.L.	hand collected	in burrow	2
33°38'19.07"S	120°11'16.06"E	-33.6386	120.1878	218 m	28/05/2007	Leng, M.C.; Moir, M.L.	hand collected	under rock	1
33°34'59.08"S	120°07'36.07"E	-33.5830	120.1267	201 m	28/05/2007	Leng, M.C.; Moir, M.L.	hand collected	in burrow	1
33°29'20.04"S	120°08'01.07"E	-33.4889	120.1336	225 m	25/05/2007	Leng, M.C.; Moir, M.L.	hand collected	in burrow	1
33°31'48.05"S	120°04'20.07"E	-33.5300	120.0722	314 m	23/05/2007	Leng, M.C.; Moir, M.L.	hand collected	in open burrow	1
33°38'19.07"S	120°11'16.06"E	-33.6386	120.1878	218 m	28/05/2007	Leng, M.C.; Moir, M.L.	hand collected	under rock	1
33°30'17.03"S	120°02'01.05"E	-33.5047	120.0336	401 m	23/05/2007	Leng, M.C.; Moir, M.L.	hand collected	in open burrow	1
33°34'45.07"S	120°09'25.01"E	-33.5791	120.1569	152 m	24/05/2007	Leng, M.C.; Moir, M.L.	hand collected	in burrow	1
33°38'19.07"S	120°11'16.06"E	-33.6386	120.1878	218 m	28/05/2007	Leng, M.C.; Moir, M.L.	hand collected	under rock	1
33°34'04.09"S	120°02'51.05"E	-33.5678	120.0475	210 m	28/05/2007	Leng, M.C.; Moir, M.L.	hand collected	in burrow	1

33°34'04.09"S	120°02'51.05"E	-33.5678	120.0475	210 m	28/05/2007	Leng, M.C.; Moir, M.L.	hand collected	in open burrow	1
33°29'20.04"S	120°08'01.07"E	-33.4889	120.1336	225 m	25/05/2007	Leng, M.C.; Moir, M.L.	hand collected	in burrow	1
33°36'18.07"S	120°08'34.05"E	-33.6050	120.1428	319 m	24/05/2007	Leng, M.C.; Moir, M.L.	hand collected	in open burrow	1
33°34'45.07"S	120°09'25.01"E	-33.5791	120.1569	152 m	24/05/2007	Leng, M.C.; Moir, M.L.	hand collected	in burrow	1
33°38'16.03"S	120°10'55.00"E	-33.6377	120.1819	232 m	14/09/2007	Leng, M.C.; Newell, J.	hand collected	in burrow with lid	1
33°40'57.00"S	120°17'39.02"E	-33.6825	120.2942	94 m	18/05/2007	Leng, M.C.; Moir, M.L.	hand collected	in burrow	1
33°34'34.09"S	120°08'29.03"E	-33.5761	120.1414	155 m	19/05/2007	Leng, M.C.; Moir, M.L.	hand collected	in open burrow	1
33°27'30.00"S	120°00'00.00"E	-33.4583	120.0000	340 m	20/05/2007	Leng, M.C.; Moir, M.L.	hand collected	in open burrow	1
33°34'04.09"S	120°02'51.05"E	-33.5678	120.0475	210 m	28/05/2007	Leng, M.C.; Moir, M.L.	hand collected	in open burrow	1
33°40'16.01"S	120°24'35.05"E	-33.6711	120.4097	153 m	29/05/2007	Leng, M.C.; Moir, M.L.	hand collected	in burrow	1
33°31'31.00"S	120°04'03.00"E	-33.5252	120.0675	362 m	12/09/2007	Leng, M.C.; Newell, J.	hand collected	under rock open burrow	1
33°32'02.02"S	120°00'52.04"E	-33.5338	120.0145	303 m	20/05/2007	Leng, M.C.; Moir, M.L.	hand collected	in burrow	1
33°38'33.05"S	120°15'49.00"E	-33.6425	120.2636	116 m	16/09/2007	Leng, M.C.; Newell, J.	hand collected	in open burrow	1
33°38'11.00"S	120°12'12.00"E	-33.6363	120.2033	145 m	14/09/2007	Leng, M.C.; Newell, J.	hand collected	in open burrow	1
33°38'29.00"S	120°11'05.00"E	-33.6413	120.1847	229 m	15/09/2007	Leng, M.C.; Newell, J.	hand collected	in open burrow	1
33°32'02.02"S	120°00'52.04"E	-33.5338	120.0145	286 m	5/09/2007	Leng, M.C.	hand collected	in open burrow	1
33°32'02.02"S	120°00'52.04"E	-33.5338	120.0145	286 m	5/09/2007	Leng, M.C.	hand collected	in burrow with lid	1
33°38'12.00"S	120°12'53.00"E	-33.6366	120.2147	120 m	14/09/2007	Leng, M.C.; Newell, J.	hand collected	in open burrow	1
33°34'03.00"S	120°07'58.00"E	-33.5675	120.1328	202 m	6/09/2007	Leng, M.C.	hand collected	in open burrow	1
33°35'35.00"S	120°09'21.00"E	-33.5930	120.1558	222 m	9/09/2007	Leng, M.C.	hand collected	in burrow with lid	1
33°34'51.00"S	120°08'17.00"E	-33.5808	120.1381	176 m	12/09/2007	Leng, M.C.; Newell, J.	hand collected	in burrow with lid	1
33°36'02.00"S	120°10'13.00"E	-33.6005	120.1703	190 m	13/09/2007	Leng, M.C.; Newell, J.	hand collected	in burrow with lid	1
33°38'40.00"S	120°11'22.00"E	-33.6444	120.1894	219 m	15/09/2007	Leng, M.C.; Newell, J.	hand collected	in open burrow	1
33°31'31.00"S	120°04'03.00"E	-33.5252	120.0675	362 m	12/09/2007	Leng, M.C.; Newell, J.	hand collected	under rock in burrow	1
33°32'02.02"S	120°00'52.04"E	-33.5338	120.0145	303 m	20/05/2007	Leng, M.C.; Moir, M.L.	hand collected	in open burrow	1
33°38'11.04"S	120°12'12.07"E	-33.6364	120.2034	156 m	17/05/2007	Leng, M.C.; Moir, M.L.	hand collected	in burrow	1
33°36'15.06"S	120°10'22.00"E	-33.6041	120.1728	163 m	16/05/2007	Leng, M.C.; Moir, M.L.	hand collected	in burrow	1
33°33'12.01"S	120°07'12.04"E	-33.5533	120.1200	346 m	21/05/2007	Leng, M.C.; Moir, M.L.	hand collected	in open burrow	1
33°38'12.05"S	120°12'53.07"E	-33.6366	120.2147	120 m	17/05/2007	Leng, M.C.; Moir, M.L.	hand collected	in burrow	1
33°38'04.08"S	120°10'51.06"E	-33.6344	120.1808		15/05/2007	Leng, M.C.; Moir, M.L., Comer, S	hand collected	under rock	1
33°36'51.02"S	120°09'08.08"E	-33.6141	120.1522	336 m	16/05/2007	Leng, M.C.; Moir, M.L.	hand collected	in plug burrow	1
33°40'57.00"S	120°17'39.02"E	-33.6825	120.2942	94 m	18/05/2007	Leng, M.C.; Moir, M.L.	hand collected	in burrow	1
33°38'11.04"S	120°12'12.07"E	-33.6364	120.2034	156 m	17/05/2007	Leng, M.C.; Moir, M.L.	hand collected	in burrow	1
33°32'04.02"S	120°00'46.03"E	-33.5344	120.0128	308 m	20/05/2007	Leng, M.C.; Moir, M.L.	hand collected	under rock	1
33°32'02.02"S	120°00'52.04"E	-33.5338	120.0145	303 m	20/05/2007	Leng, M.C.; Moir, M.L.	hand collected	in burrow	1
33°32'04.02"S	120°00'46.03"E	-33.5344	120.0128	308 m	20/05/2007	Leng, M.C.; Moir, M.L.	hand collected	in burrow	1
33°34'34.09"S	120°08'29.03"E	-33.5761	120.1414	155 m	19/05/2007	Leng, M.C.; Moir, M.L.	hand collected	in open burrow	1
33°32'02.02"S	120°00'52.04"E	-33.5338	120.0145	303 m	20/05/2007	Leng, M.C.; Moir, M.L.	hand collected	in open burrow	1
33°38'11.04"S	120°12'12.07"E	-33.6364	120.2034	156 m	17/05/2007	Leng, M.C.; Moir, M.L.	hand collected	in burrow	1
33°38'02.05"S	120°10'55.03"E	-33.6339	120.1820	235 m	15/05/2007	Leng, M.C.; Moir, M.L., Comer, S	hand collected	in burrow	1
33°36'15.06"S	120°10'22.00"E	-33.6041	120.1728	163 m	16/05/2007	Leng, M.C.; Moir, M.L.	hand collected	in burrow	1
33°40'35.02"S	120°17'59.08"E	-33.6764	120.2997	81 m	18/05/2007	Leng, M.C.; Moir, M.L.	hand collected	in open burrow	1
33°32'02.02"S	120°00'52.04"E	-33.5338	120.0145	303 m	20/05/2007	Leng, M.C.; Moir, M.L.	hand collected	in open burrow	1
33°31'58.06"S	120°05'01.06"E	-33.5327	120.0836	354 m	22/05/2007	Leng, M.C.; Moir, M.L.	hand collected	in open burrow	1
33°39'40.06"S	120°23'02.09"E	-33.6611	120.3839	148 m	29/05/2007	Leng, M.C.; Moir, M.L.	hand collected	in burrow	1
33°27'30.00"S	120°00'00.00"E	-33.4583	120.0000	340 m	20/05/2007	Leng, M.C.; Moir, M.L.	hand collected	in open burrow	1
33°38'19.07"S	120°11'16.06"E	-33.6386	120.1878	218 m	28/05/2007	Leng, M.C.; Moir, M.L.	hand collected	in open burrow	1
33°36'18.07"S	120°08'34.05"E	-33.6050	120.1428	319 m	24/05/2007	Leng, M.C.; Moir, M.L.	hand collected	in burrow	1
33°31'49.09"S	120°05'51.06"E	-33.5303	120.0975	294 m	22/05/2007	Leng, M.C.; Moir, M.L.	hand collected	in open burrow	1
33°32'35.07"S	120°06'17.00"E	-33.5430	120.1047	279 m	21/05/2007	Leng, M.C.; Moir, M.L.	hand collected	in burrow	1
33°31'49.09"S	120°05'51.06"E	-33.5303	120.0975	261 m	22/05/2007	Leng, M.C.; Moir, M.L.	hand collected	in open burrow	1
33°31'58.06"S	120°05'01.06"E	-33.5327	120.0836	354 m	22/05/2007	Leng, M.C.; Moir, M.L.	hand collected	in open burrow	1
33°33'18.05"S	120°06'46.04"E	-33.5550	120.1128	266 m	23/05/2007	Leng, M.C.; Moir, M.L.	hand collected	under rock	1
33°32'02.02"S	120°00'52.04"E	-33.5338	120.0145	303 m	20/05/2007	Leng, M.C.; Moir, M.L.	hand collected	in burrow	1
33°33'12.01"S	120°07'12.04"E	-33.5533	120.1200	346 m	21/05/2007	Leng, M.C.; Moir, M.L.	hand collected	in open burrow	1
33°32'02.02"S	120°00'52.04"E	-33.5338	120.0145	303 m	20/05/2007	Leng, M.C.; Moir, M.L.	hand collected	in open burrow	1
33°32'02.02"S	120°00'52.04"E	-33.5338	120.0145	303 m	20/05/2007	Leng, M.C.; Moir, M.L.	hand collected	in burrow	1
33°36'51.02"S	120°09'08.08"E	-33.6141	120.1522	336 m	16/05/2007	Leng, M.C.; Moir, M.L.	hand collected	in burrow	1
33°33'12.01"S	120°07'12.04"E	-33.5533	120.1200	346 m	21/05/2007	Leng, M.C.; Moir, M.L.	hand collected	in open burrow	1
33°38'31.06"S	120°13'50.00"E	-33.6419	120.2306	130 m	19/05/2007	Leng, M.C.; Moir, M.L.	hand collected	in burrow	1
33°30'17.03"S	120°02'01.05"E	-33.5047	120.0336	401 m	23/05/2007	Leng, M.C.; Moir, M.L.	hand collected	in open burrow	1
33°38'33.05"S	120°15'49.00"E	-33.6425	120.2636	131 m	18/05/2007	Leng, M.C.; Moir, M.L.	hand collected	in burrow	1
33°30'55.03"S	120°02'52.05"E	-33.5152	120.0478	383 m	22/05/2007	Leng, M.C.; Moir, M.L.	hand collected	under rock	1
33°32'05"S	120°00'52"E	-33.5347	120.0144		22/11/2006	Moir, M.L.	hand collected	in burrow	1

33°28'47.00"S	120°05'32.00"E	-33.4797	120.0922	213 m	8/09/2007	Leng, M.C.; Lyons, M.	hand collected	in open burrow	1
33°40'57.00"S	120°17'39.00"E	-33.6825	120.2942	94 m	17/09/2007	Leng, M.C.; Newell, J., Walker, I	hand collected	under rock	1
33°40'34.01"S	120°23'59.04"E	-33.6761	120.3997	163 m	29/05/2007	Leng, M.C.; Moir, M.L.	hand collected	in open burrow	1
33°31'48.05"S	120°04'20.07"E	-33.5300	120.0722	314 m	23/05/2007	Leng, M.C.; Moir, M.L.	hand collected	in burrow	1
33°40'34.01"S	120°23'59.04"E	-33.6761	120.3997	163 m	29/05/2007	Leng, M.C.; Moir, M.L.	hand collected	in burrow	1
33°29'20.04"S	120°08'01.07"E	-33.4889	120.1336	225 m	25/05/2007	Leng, M.C.; Moir, M.L.	hand collected	in burrow	1
33°32'05"S	120°00'52"E	-33.5347	120.0144		22/11/2006	Moir, M.L.	hand collected	in burrow	1
33°31'33"S	120°40'03"E	-33.5258	120.6675		12/09/2007	Leng, M.C.; Newell, J.	tullgren funnel	leaf litter	2
33°36'15.06"S	120°10'22.00"E	-33.6041	120.1728	163 m	16/05/2007	Leng, M.C.; Moir, M.L.		leaf litter	1
33°38'31"S	120°15'47"E	-33.6419	120.2631		16/09/2007	Leng, M.C.; Newell, J.	tullgren funnel	leaf litter	2
33°34'03.00"S	120°07'58.00"E	-33.5675	120.1328	202 m	6/09/2007	Leng, M.C.	tullgren funnel	in leaf litter	5
33°36'51.02"S	120°09'08.08"E	-33.6141	120.1522	336 m	13/09/2007	Leng, M.C.; Newell, J.	tullgren funnel	in leaf litter	8
33°34'04.09"S	120°02'51.05"E	-33.5678	120.0475	210 m	28/05/2007	Leng, M.C.; Moir, M.L.	tullgren funnel	in leaf litter	2
33°36'51.02"S	120°09'08.08"E	-33.6141	120.1522	336 m	16/05/2007	Leng, M.C.; Moir, M.L.	tullgren funnel	in leaf litter	34
33°40'57.00"S	120°17'39.02"E	-33.6825	120.2942	94 m	18/05/2007	Leng, M.C.; Moir, M.L.	tullgren funnel	in leaf litter	5
33°39'49.06"S	120°23'12.09"E	-33.6636	120.3867	158 m	29/05/2007	Leng, M.C.; Moir, M.L.	tullgren funnel	in leaf litter	2
33°30'17.03"S	120°02'01.05"E	-33.5047	120.0336	401 m	23/05/2007	Leng, M.C.; Moir, M.L.	tullgren funnel	in leaf litter	3
33°38'40"S	120°11'22"E	-33.6444	120.1894		15/09/2007	Leng, M.C.; Newell, J.	tullgren funnel	leaf litter	8
33°31'11"S	120°05'03"E	-33.5197	120.0842		5/09/2007	Leng, M.C.	tullgren funnel	leaf litter	3
33°36'18.07"S	120°08'34.05"E	-33.6050	120.1428	319 m	24/05/2007	Leng, M.C.; Moir, M.L.		in leaf litter, under	2
33°38'11"S	120°12'12"E	-33.6363	120.2033		14/09/2007	Leng, M.C.; Newell, J.	tullgren funnel	leaf litter	8
33°38'07.05"S	120°10'47.04"E	-33.6352	120.1797	225 m	15/05/2007	Leng, M.C.; Moir, M.L., Comer, S	tullgren funnel	in leaf litter	4
33°36'52.02"S	120°09'08.08"E	-33.6144	120.1522		16/05/2007	Leng, M.C.; Moir, M.L.	tullgren funnel	leaf litter	4
33°31'11.00"S	120°05'03.00"E	-33.5197	120.0842	285 m	6/09/2007	Leng, M.C.	tullgren funnel	in leaf litter	1
33°38'33.05"S	120°15'49.00"E	-33.6425	120.2636	116 m	16/09/2007	Leng, M.C.; Newell, J.	tullgren funnel	in leaf litter	8
33°29'21.00"S	120°08'02.00"E	-33.4891	120.1339	210 m	8/09/2007	Leng, M.C.; Lyons, M.	tullgren funnel	in leaf litter	3
33°31'33.00"S	120°04'03.00"E	-33.5258	120.0675	362 m	12/09/2007	Leng, M.C.; Newell, J.	tullgren funnel	in leaf litter	7
33°36'15.06"S	120°10'22.00"E	-33.6041	120.1728	163 m	16/05/2007	Leng, M.C.; Moir, M.L.	tullgren funnel	leaf litter	3
33°31'48.05"S	120°04'20.07"E	-33.5300	120.0722	314 m	23/05/2007	Leng, M.C.; Moir, M.L.	tullgren funnel	in leaf litter	1
33°31'41.02"S	120°05'49.09"E	-33.5280	120.0970	318 m	22/05/2007	Leng, M.C.; Moir, M.L.	tullgren funnel	in leaf litter	2
33°43'38.02"S	120°13'24.06"E	-33.7272	120.2234	179 m	19/05/2007	Leng, M.C.; Moir, M.L.	tullgren funnel	in leaf litter	4
33°37'09.06"S	120°09'58.01"E	-33.6191	120.1661	228 m	15/05/2007	Leng, M.C.; Moir, M.L.	tullgren funnel	in leaf litter	12
33°40'57.00"S	120°17'39.02"E	-33.6825	120.2942	94 m	18/05/2007	Leng, M.C.; Moir, M.L.	tullgren funnel	in leaf litter	9
33°36'18.07"S	120°08'34.05"E	-33.6050	120.1428	319 m	24/05/2007	Leng, M.C.; Moir, M.L.		in leaf litter, under	3
33°37'09.06"S	120°09'58.01"E	-33.6191	120.1661	228 m	15/05/2007	Leng, M.C.; Moir, M.L.	tullgren funnel	in leaf litter	1
33°31'33"S	120°40'03"E	-33.5258	120.6675		12/09/2007	Leng, M.C.; Newell, J.	tullgren funnel	leaf litter	1
33°36'52.02"S	120°09'08.08"E	-33.6144	120.1522	336 m	16/05/2007	Leng, M.C.; Moir, M.L.	tullgren funnel	leaf litter	1
33°38'11"S	120°12'12"E	-33.6363	120.2033		14/09/2007	Leng, M.C.; Newell, J.	tullgren funnel	leaf litter	1
33°34'04.09"S	120°02'51.05"E	-33.5680	120.0475		8/09/2007	Leng, M.C.; Lyons, M.	tullgren funnel	leaf litter	2
33°40'57.00"S	120°17'39.02"E	-33.6825	120.2942	94 m	18/05/2007	Leng, M.C.; Moir, M.L.	tullgren funnel	in leaf litter	3
33°38'31"S	120°15'47"E	-33.6419	120.2631		16/09/2007	Leng, M.C.; Newell, J.	tullgren funnel	leaf litter	5
33°38'40.00"S	120°11'22.00"E	-33.6444	120.1894	219 m	15/09/2007	Leng, M.C.; Newell, J.	tullgren funnel	in leaf litter	1
33°36'04.00"S	120°08'29.00"E	-33.6011	120.1414	255 m	10/09/2007	Leng, M.C.	tullgren funnel	in leaf litter	1
33°31'58.06"S	120°05'01.06"E	-33.5327	120.0836	354 m	22/05/2007	Leng, M.C.; Moir, M.L.	tullgren funnel	in leaf litter	2
33°30'55.03"S	120°02'52.05"E	-33.5152	120.0478	383 m	22/05/2007	Leng, M.C.; Moir, M.L.	hand collected	between rock	12
33°31'01.00"S	120°05'11.00"E	-33.5169	120.0864	277 m	18/09/2007	Leng, M.C., Newell, J.	hand collected	rock on rock	3
33°31'01.00"S	120°05'11.00"E	-33.5169	120.0864	277 m	18/09/2007	Leng, M.C., Newell, J.	hand collected	rock on rock	1
33°30'55.03"S	120°02'52.05"E	-33.5152	120.0478	383 m	22/05/2007	Leng, M.C.; Moir, M.L.	hand collected	between rock	2
33°36'18.07"S	120°08'34.05"E	-33.6050	120.1428	319 m	24/05/2007	Leng, M.C.; Moir, M.L.	hand collected	between rock	10
33°40'54.07"S	120°17'38.07"E	-33.6816	120.2939	104 m	17/09/2007	Leng, M.C.; Newell, J., Walker, I	hand collected	rock on rock	2
33°28'47.00"S	119°59'52.00"E	-33.4797	119.9978	371 m	4/09/2007	Leng, M.C.	hand collected	rock on rock	1
33°35'11.09"S	120°08'49.06"E	-33.5864	120.1470	217 m	24/05/2007	Leng, M.C.; Moir, M.L.	hand collected	between rock	6
33°34'45.07"S	120°09'25.01"E	-33.5791	120.1569	152 m	24/05/2007	Leng, M.C.; Moir, M.L.	hand collected	between rock	6
33°36'18.07"S	120°08'34.05"E	-33.6050	120.1428	319 m	24/05/2007	Leng, M.C.; Moir, M.L.	hand collected	between rock	1
33°34'04.09"S	120°02'51.05"E	-33.5678	120.0475	210 m	28/05/2007	Leng, M.C.; Moir, M.L.	tullgren funnel	leaf litter	2
33°34'04.09"S	120°02'51.05"E	-33.5678	120.0475	210 m	8/09/2007	Leng, M.C.; Lyons, M.	tullgren funnel	in leaf litter	2
33°38'11.00"S	120°12'12.00"E	-33.6363	120.2033	145 m	14/09/2007	Leng, M.C.; Newell, J.	tullgren funnel	in leaf litter	1
33°36'18.07"S	120°08'34.05"E	-33.6050	120.1428	319 m	24/05/2007	Leng, M.C.; Moir, M.L.	tullgren funnel	in leaf litter	7
33°36'18.07"S	120°08'34.05"E	-33.6050	120.1428	319 m	24/05/2007	Leng, M.C.; Moir, M.L.		in leaf litter, under	1
33°39'49.06"S	120°23'12.09"E	-33.6636	120.3867	158 m	29/05/2007	Leng, M.C.; Moir, M.L.	tullgren funnel	leaf litter	1
33°36'52.02"S	120°09'08.08"E	-33.6144	120.1522	336 m	16/05/2007	Leng, M.C.; Moir, M.L.	Tullgren funnel		1
33°35'11.09"S	120°08'49.06"E	-33.5864	120.1470	192 m	24/05/2007	Leng, M.C.; Moir, M.L.	hand collected	under rock	1
33°33'18.05"S	120°06'46.04"E	-33.5550	120.1128	266 m	23/05/2007	Leng, M.C.; Moir, M.L.	hand collected	under rock	1
33°37'05.03"S	120°07'50.07"E	-33.6180	120.1306	215 m	28/05/2007	Leng, M.C.; Moir, M.L.	hand collected	under rock	11

33°33'18.05"S	120°06'46.04"E	-33.5550	120.1128	266 m	23/05/2007	Leng, M.C.; Moir, M.L.	hand collected	under rock	1
33°33'12.01"S	120°07'12.04"E	-33.5533	120.1200	346 m	21/05/2007	Leng, M.C.; Moir, M.L.	hand collected	under rotting wood	1
33°35'11.09"S	120°08'49.06"E	-33.5864	120.1470	192 m	24/05/2007	Leng, M.C.; Moir, M.L.	hand collected	under rock	1
33°29'20.04"S	120°08'01.07"E	-33.4889	120.1336	225 m	25/05/2007	Leng, M.C.; Moir, M.L.	hand collected	in mygal burrow	1
33°35'11.09"S	120°08'49.06"E	-33.5864	120.1470	217 m	24/05/2007	Leng, M.C.; Moir, M.L.	hand collected	under rock	1
33°38'33.05"S	120°15'49.00"E	-33.6425	120.2636	116 m	16/09/2007	Leng, M.C.; Newell, J.	hand collected	in leaf litter	1
33°28'47.00"S	120°05'32.00"E	-33.4797	120.0922	213 m	8/09/2007	Leng, M.C.; Lyons, M.	hand collected	in leaf litter	1
33°32'04.02"S	120°00'46.03"E	-33.5344	120.0128	308 m	20/05/2007	Leng, M.C.; Moir, M.L.	hand collected	under rock	1
33°38'29.00"S	120°11'05.00"E	-33.6413	120.1847	229 m	15/09/2007	Leng, M.C.; Newell, J.	hand collected	in leaf litter	1
33°38'12.05"S	120°12'53.07"E	-33.6366	120.2147	120 m	17/05/2007	Leng, M.C.; Moir, M.L.	hand collected	under rock	1
33°27'53.04"S	119°59'54.08"E	-33.4647	119.9984	442 m	20/05/2007	Leng, M.C.; Moir, M.L.	hand collected	under rock	1
33°34'59.08"S	120°07'36.07"E	-33.5830	120.1267	201 m	28/05/2007	Leng, M.C.; Moir, M.L.	hand collected	under rock	1
33°40'16.01"S	120°24'35.05"E	-33.6711	120.4097	153 m	29/05/2007	Leng, M.C.; Moir, M.L.	hand collected	under rock	1
33°33'06.01"S	120°08'48.06"E	-33.5516	120.1467	150 m	22/05/2007	Leng, M.C.; Moir, M.L.	hand collected	under rock	1
33°33'06.01"S	120°08'48.06"E	-33.5516	120.1467	157m	6/09/2007	Leng, M.C.	hand collected	under rock	1
33°34'04.09"S	120°02'51.05"E	-33.5678	120.0475	210 m	28/05/2007	Leng, M.C.; Moir, M.L.	hand collected	under rock	1
33°40'54.07"S	120°17'38.07"E	-33.6816	120.2939	104 m	16/09/2007	Leng, M.C.; Newell, J.	hand collected	under rock	1
33°33'06.01"S	120°08'48.06"E	-33.5516	120.1467	157 m	6/09/2007	Leng, M.C.	hand collected	under rock	1
33°36'04.00"S	120°08'29.00"E	-33.6011	120.1414	255 m	10/09/2007	Leng, M.C.	hand collected	under rock	1
33°36'18.07"S	120°08'34.05"E	-33.6050	120.1428	319 m	10/09/2007	Leng, M.C.	hand collected	under rock	1
33°35'35.00"S	120°09'21.00"E	-33.5930	120.1558	222 m	9/09/2007	Leng, M.C.	hand collected	under rock	1
33°34'07.01"S	120°08'34.02"E	-33.5686	120.1428	239 m	23/05/2007	Leng, M.C.; Moir, M.L.	hand collected	under rock	1
33°27'53.04"S	119°59'54.08"E	-33.4647	119.9984	442 m	20/05/2007	Leng, M.C.; Moir, M.L.	hand collected	under rock	1
33°36'10.03"S	120°10'15.05"E	-33.6027	120.1708	341 m	16/05/2007	Leng, M.C.; Moir, M.L.	hand collected	under rock	1
33°33'06.01"S	120°08'48.06"E	-33.5516	120.1467	150 m	22/05/2007	Leng, M.C.; Moir, M.L.	hand collected	under rock	1
33°31'41.02"S	120°05'49.09"E	-33.5280	120.0970	318 m	22/05/2007	Leng, M.C.; Moir, M.L.	hand collected	under rock	1
33°31'41.02"S	120°05'49.09"E	-33.5280	120.0970	318 m	22/05/2007	Leng, M.C.; Moir, M.L.	hand collected	under rock	1
33°33'06.01"S	120°08'48.06"E	-33.5516	120.1467	150 m	22/05/2007	Leng, M.C.; Moir, M.L.	hand collected	under rock	1
33°36'10.03"S	120°10'15.05"E	-33.6027	120.1708	341 m	16/05/2007	Leng, M.C.; Moir, M.L.	hand collected	under rock	1
33°38'16.03"S	120°10'46.01"E	-33.6377	120.1795	221 m	17/05/2007	Leng, M.C.; Moir, M.L.	hand collected	under rock	1
33°40'54.07"S	120°17'38.07"E	-33.6816	120.2939	111 m	18/05/2007	Leng, M.C.; Moir, M.L.	hand collected	under rock	1
33°36'10.03"S	120°10'15.05"E	-33.6027	120.1708	341 m	16/05/2007	Leng, M.C.; Moir, M.L.	hand collected	under rock	1
33°29'20.04"S	120°08'01.07"E	-33.4889	120.1336	225 m	25/05/2007	Leng, M.C.; Moir, M.L.	hand collected	under rock	1
33°30'55.03"S	120°02'52.05"E	-33.5152	120.0478	383 m	22/05/2007	Leng, M.C.; Moir, M.L.	hand collected	under rock	1
33°38'31.06"S	120°13'50.00"E	-33.6419	120.2306	130 m	19/05/2007	Leng, M.C.; Moir, M.L.	hand collected	under rock	1
33°38'31.06"S	120°13'50.00"E	-33.6419	120.2306	130 m	19/05/2007	Leng, M.C.; Moir, M.L.	hand collected	under rock	1
33°38'31.06"S	120°13'50.00"E	-33.6419	120.2306	130 m	19/05/2007	Leng, M.C.; Moir, M.L.	hand collected	under rock	1
33°32'04.02"S	120°00'46.03"E	-33.5344	120.0128	308 m	20/05/2007	Leng, M.C.; Moir, M.L.	hand collected	under rocks	1
33°37'05.03"S	120°07'50.07"E	-33.6180	120.1306	215 m	28/05/2007	Leng, M.C.; Moir, M.L.	hand collected	under rocks	2
33°36'18.07"S	120°08'34.05"E	-33.6050	120.1428	319 m	24/05/2007	Leng, M.C.; Moir, M.L.	hand collected	under rocks	1
33°34'34.09"S	120°08'29.03"E	-33.5761	120.1414	155 m	19/05/2007	Leng, M.C.; Moir, M.L.	hand collected	under rocks	1
33°36'18.07"S	120°08'34.05"E	-33.6050	120.1428	319 m	24/05/2007	Leng, M.C.; Moir, M.L.	hand collected	under rocks	1
33°39'49.06"S	120°23'12.09"E	-33.6636	120.3867	158 m	29/05/2007	Leng, M.C.; Moir, M.L.	tullgren funnel	in leaf litter	3
33°40'16.01"S	120°24'35.05"E	-33.6711	120.4097	153 m	29/05/2007	Leng, M.C.; Moir, M.L.	hand collected	under rock	1
33°33'18.05"S	120°06'46.04"E	-33.5550	120.1128	266 m	23/05/2007	Leng, M.C.; Moir, M.L.	hand collected	under rock	1
33°31'13.09"S	120°03'34.01"E	-33.5203	120.0594	380 m	18/09/2007	Leng, M.C.; Newell, J.	hand collected	under rock	1
33°28'47.00"S	119°59'52.00"E	-33.4797	119.9978	371 m	4/09/2007	Leng, M.C.	hand collected	under rock	1
33°27'38.09"S	120°00'00.00"E	-33.4605	120.0000	358 m	20/05/2007	Leng, M.C.; Moir, M.L.	hand collected	under rock	1
33°31'13.09"S	120°03'34.01"E	-33.5203	120.0594	379 m	23/05/2007	Leng, M.C.; Moir, M.L.	hand collected	under rock	8
33°40'35.02"S	120°17'59.08"E	-33.6764	120.2997	81 m	18/05/2007	Leng, M.C.; Moir, M.L.	hand collected	under rock	5
33°32'58.03"S	120°06'12.01"E	-33.5494	120.1033	226 m	21/05/2007	Leng, M.C.; Moir, M.L.	hand collected	under rock	9
33°34'04.09"S	120°02'51.05"E	-33.5678	120.0475	210 m	28/05/2007	Leng, M.C.; Moir, M.L.	hand collected	under rock	5
33°38'31.06"S	120°13'50.00"E	-33.6419	120.2306	130 m	19/05/2007	Leng, M.C.; Moir, M.L.	hand collected	under rock	1
33°27'38.09"S	120°00'00.00"E	-33.4605	120.0000	358 m	20/05/2007	Leng, M.C.; Moir, M.L.	hand collected	under rock	6
33°40'35.02"S	120°17'59.08"E	-33.6764	120.2997	81 m	18/05/2007	Leng, M.C.; Moir, M.L.	hand collected	under rock	1
33°38'31.00"S	120°13'50.00"E	-33.6419	120.2306	96 m	16/09/2007	Leng, M.C.; Newell, J.	hand collected	under rock	1
33°38'31.06"S	120°13'50.00"E	-33.6419	120.2306	130 m	19/05/2007	Leng, M.C.; Moir, M.L.	hand collected	under rock	1
33°32'58.03"S	120°06'12.01"E	-33.5494	120.1033	226 m	21/05/2007	Leng, M.C.; Moir, M.L.	hand collected	under rock	1
33°41'53.07"S	120°18'00.02"E	-33.6980	120.3000	115 m	18/05/2007	Leng, M.C.; Moir, M.L.	hand collected	under rock	1
33°40'34.01"S	120°23'59.04"E	-33.6761	120.3997	163 m	29/05/2007	Leng, M.C.; Moir, M.L.	hand collected	under rock	1
33°39'40.06"S	120°23'02.09"E	-33.6611	120.3839	148 m	29/05/2007	Leng, M.C.; Moir, M.L.	hand collected	under rock	1
33°34'59.08"S	120°07'36.07"E	-33.5830	120.1267	201 m	28/05/2007	Leng, M.C.; Moir, M.L.	hand collected	under rock	2
33°33'06.01"S	120°08'48.06"E	-33.5516	120.1467	150 m	22/05/2007	Leng, M.C.; Moir, M.L.	hand collected	under rock	1
33°36'51.02"S	120°09'08.08"E	-33.6141	120.1522	336 m	16/05/2007	Leng, M.C.; Moir, M.L.	tullgren funnel	in leaf litter	3

33°41'53.07"S	120°18'00.02"E	-33.6980	120.3000	115 m	18/05/2007	Leng, M.C.; Moir, M.L.	tullgren funnel	in leaf litter	4
33°27'30.00"S	120°00'00.00"E	-33.4583	120.0000	340 m	20/05/2007	Leng, M.C.; Moir, M.L.	tullgren funnel	in leaf litter	3
33°31'58.06"S	120°05'01.06"E	-33.5327	120.0836	354 m	22/05/2007	Leng, M.C.; Moir, M.L.	tullgren funnel	in leaf litter	2
33°31'41.02"S	120°05'49.09"E	-33.5280	120.0970	318 m	22/05/2007	Leng, M.C.; Moir, M.L.	tullgren funnel	in leaf litter	9
33°34'04.09"S	120°02'51.05"E	-33.5678	120.0475	210 m	28/05/2007	Leng, M.C.; Moir, M.L.	tullgren funnel	in leaf litter	5
33°31'11.00"S	120°05'03.00"E	-33.5197	120.0842	284 m	5/09/2007	Leng, M.C.	tullgren funnel	in leaf litter	2
33°38'07.05"S	120°10'47.04"E	-33.6352	120.1797	225 m	15/05/2007	Leng, M.C.; Moir, M.L., Comer, S	tullgren funnel	in leaf litter	1
33°38'33.05"S	120°15'49.00"E	-33.6425	120.2636	116 m	16/09/2007	Leng, M.C.; Newell, J.	tullgren funnel	in leaf litter	3
33°36'51.02"S	120°09'08.08"E	-33.6141	120.1522	336 m	13/09/2007	Leng, M.C.; Newell, J.	tullgren funnel	in leaf litter	1
33°34'04.09"S	120°02'51.05"E	-33.5678	120.0475	210 m	8/09/2007	Leng, M.C.; Lyons, M.	tullgren funnel	in leaf litter	10
33°36'51.02"S	120°09'08.08"E	-33.6141	120.1522	336 m	16/05/2007	Leng, M.C.; Moir, M.L.	tullgren funnel	in leaf litter	1
33°37'06.07"S	120°09'45.07"E	-33.6166	120.1500	242 m	15/05/2007	Leng, M.C.; Moir, M.L.	hand collected	in leaf litter, under	29
33°37'06.07"S	120°09'45.07"E	-33.6166	120.1500	242 m	15/05/2007	Leng, M.C.; Moir, M.L.	hand collected	in leaf litter, under	1
33°38'02.05"S	120°10'55.03"E	-33.6339	120.1820	235 m	15/05/2007	Leng, M.C.; Moir, M.L., Comer, S	hand collected	under rock	8
33°38'02.05"S	120°10'55.03"E	-33.6339	120.1820	235 m	15/05/2007	Leng, M.C.; Moir, M.L., Comer, S	hand collected	under rock	1
33°31'13.09"S	120°03'34.01"E	-33.5203	120.0594	379 m	23/05/2007	Leng, M.C.; Moir, M.L.	hand collected	under rock	15
33°34'45.07"S	120°09'25.01"E	-33.5791	120.1569	175 m	24/05/2007	Leng, M.C.; Moir, M.L.	hand collected	under rock, leaf litt	21
33°34'51.00"S	120°08'17.00"E	-33.5808	120.1381	162 m	12/09/2007	Leng, M.C.; Newell, J.	hand collected	under rock	12
33°36'51.02"S	120°09'08.08"E	-33.6141	120.1522	336 m	13/09/2007	Leng, M.C.; Newell, J.	hand collected	in leaf litter and un	7
33°34'59.08"S	120°07'36.07"E	-33.5830	120.1267	201 m	28/05/2007	Leng, M.C.; Moir, M.L.	hand collected	under rock, leaf litt	35
33°36'18.07"S	120°08'34.05"E	-33.6050	120.1428	319 m	24/05/2007	Leng, M.C.; Moir, M.L.	hand collected	in leaf litter, under	54
33°30'55.03"S	120°02'52.05"E	-33.5152	120.0478	383 m	22/05/2007	Leng, M.C.; Moir, M.L.	hand collected	in leaf litter, under	47
33°38'19.07"S	120°11'16.06"E	-33.6386	120.1878	218 m	28/05/2007	Leng, M.C.; Moir, M.L.	hand collected	under rock, leaf litt	20
33°34'59.08"S	120°07'36.07"E	-33.5830	120.1267	201 m	28/05/2007	Leng, M.C.; Moir, M.L.	hand collected	under rock, leaf litt	33
33°36'18.07"S	120°08'34.05"E	-33.6050	120.1428	319 m	10/09/2007	Leng, M.C.	hand collected	under rock	7
33°36'56.06"S	120°09'43.03"E	-33.6155	120.1619	253 m	16/05/2007	Leng, M.C.; Moir, M.L.	hand collected	in leaf litter, under	1
33°38'19.07"S	120°11'16.06"E	-33.6386	120.1878	218 m	28/05/2007	Leng, M.C.; Moir, M.L.	hand collected	under rock, leaf litt	20
33°38'19.07"S	120°11'16.06"E	-33.6386	120.1878	218 m	28/05/2007	Leng, M.C.; Moir, M.L.	hand collected	under rock, leaf litt	20
33°38'19.07"S	120°11'16.06"E	-33.6386	120.1878	218 m	28/05/2007	Leng, M.C.; Moir, M.L.	hand collected	under rock, leaf litt	20
33°36'51.02"S	120°09'08.08"E	-33.6141	120.1522	336 m	16/05/2007	Leng, M.C.; Moir, M.L.	hand collected	in leaf litter	1
33°38'02.05"S	120°10'55.03"E	-33.6339	120.1820	235 m	15/05/2007	Leng, M.C.; Moir, M.L., Comer, S	hand collected	under rock	1
33°32'35.07"S	120°06'17.00"E	-33.5430	120.1047	279 m	21/05/2007	Leng, M.C.; Moir, M.L.	hand collected	in leaf litter, under	1
33°34'34.09"S	120°08'29.03"E	-33.5761	120.1414	155 m	19/05/2007	Leng, M.C.; Moir, M.L.	hand collected	under rock	30
33°36'51.02"S	120°09'08.08"E	-33.6141	120.1522	336 m	16/05/2007	Leng, M.C.; Moir, M.L.	hand collected	in leaf litter	1
33°36'56.06"S	120°09'43.03"E	-33.6155	120.1619	253 m	16/05/2007	Leng, M.C.; Moir, M.L.	hand collected	in leaf litter, under	12
33°31'48.05"S	120°04'20.07"E	-33.5300	120.0722	314 m	23/05/2007	Leng, M.C.; Moir, M.L.	hand collected	in leaf litter, under	29
33°32'35.07"S	120°06'17.00"E	-33.5430	120.1047	279 m	21/05/2007	Leng, M.C.; Moir, M.L.	hand collected	in leaf litter, under	86
33°36'51.02"S	120°09'08.08"E	-33.6141	120.1522	336 m	16/05/2007	Leng, M.C.; Moir, M.L.	hand collected	in leaf litter	17
33°30'55.03"S	120°02'52.05"E	-33.5152	120.0478	383 m	22/05/2007	Leng, M.C.; Moir, M.L.	hand collected	in leaf litter, under	1
33°34'34.09"S	120°08'29.03"E	-33.5761	120.1414	155 m	19/05/2007	Leng, M.C.; Moir, M.L.	hand collected	under rock	1
33°36'51.02"S	120°09'08.08"E	-33.6141	120.1522	336 m	16/05/2007	Leng, M.C.; Moir, M.L.	tullgren funnel	in leaf litter	55
33°31'48.05"S	120°04'20.07"E	-33.5300	120.0722	314 m	23/05/2007	Leng, M.C.; Moir, M.L.	tullgren funnel	in leaf litter	1
33°36'18.07"S	120°08'34.05"E	-33.6050	120.1428	319 m	24/05/2007	Leng, M.C.; Moir, M.L.	tullgren funnel	in leaf litter	21
33°36'59.00"S	120°09'38.00"E	-33.6163	120.1606	246 m	13/09/2007	Leng, M.C.; Newell, J.	hand collected	in leaf litter	8
33°38'31.00"S	120°09'50.00"E	-33.6419	120.1639	96 m	16/09/2007	Leng, M.C.; Newell, J.	hand collected	under rock	6
33°38'19.07"S	120°11'16.06"E	-33.6386	120.1878	218 m	28/05/2007	Leng, M.C.; Moir, M.L.	hand collected	under rock, leaf litt	2
33°38'11.04"S	120°12'12.07"E	-33.6364	120.2034	156 m	17/05/2007	Leng, M.C.; Moir, M.L.	hand collected	leaf litter, under rox	5
33°36'15.06"S	120°10'22.00"E	-33.6041	120.1728	163 m	16/05/2007	Leng, M.C.; Moir, M.L.	hand collected	leaf litter	2
33°43'38.02"S	120°13'24.06"E	-33.7272	120.2234	179 m	19/05/2007	Leng, M.C.; Moir, M.L.	hand collected	under rock, leaf litt	6
33°36'18.07"S	120°08'34.05"E	-33.6050	120.1428	319 m	10/09/2007	Leng, M.C.	hand collected	under rock	1
33°38'17.00"S	120°11'15.00"E	-33.6380	120.1875	224 m	14/09/2007	Leng, M.C.; Newell, J.	hand collected	in leaf litter in a cre	1
33°32'35.07"S	120°06'17.00"E	-33.5430	120.1047	279 m	21/05/2007	Leng, M.C.; Moir, M.L.	hand collected	in leaf litter, under	5
33°38'16.03"S	120°10'46.01"E	-33.6377	120.1795	221 m	17/05/2007	Leng, M.C.; Moir, M.L.	hand collected	under rocks, leaf li	7
33°40'57.00"S	120°17'39.02"E	-33.6825	120.2942	94 m	18/05/2007	Leng, M.C.; Moir, M.L.	hand collected	leaf litter	1
33°36'42.05"S	120°09'03.00"E	-33.6116	120.1508	312 m	24/05/2007	Leng, M.C.; Moir, M.L.	hand collected	under rock	10
33°38'31.06"S	120°13'50.00"E	-33.6419	120.2306	130 m	19/05/2007	Leng, M.C.; Moir, M.L.	hand collected	under rock, leaf litt	21
33°34'35.04"S	120°13'45.02"E	-33.5764	120.2292	177 m	19/05/2007	Leng, M.C.; Moir, M.L.	hand collected	under rock, leaf litt	1
33°34'35.04"S	120°13'45.02"E	-33.5764	120.2292	177 m	19/05/2007	Leng, M.C.; Moir, M.L.	hand collected	under rock, leaf litt	12
33°32'35.07"S	120°06'17.00"E	-33.5430	120.1047	279 m	21/05/2007	Leng, M.C.; Moir, M.L.	hand collected	in leaf litter, under	1
33°31'58.06"S	120°05'01.06"E	-33.5327	120.0836	354 m	22/05/2007	Leng, M.C.; Moir, M.L.	hand collected	in leaf litter, under	13
33°40'57.00"S	120°17'39.02"E	-33.6825	120.2942	94 m	18/05/2007	Leng, M.C.; Moir, M.L.	hand collected	leaf litter	6
33°36'10.03"S	120°10'15.05"E	-33.6027	120.1708	341 m	16/05/2007	Leng, M.C.; Moir, M.L.	hand collected	under rock, leaf litt	1
33°30'13.09"S	120°01'58.08"E	-33.5036	120.0328	450 m	23/05/2007	Leng, M.C.; Moir, M.L.	hand collected	in leaf litter	10
33°36'10.03"S	120°10'15.05"E	-33.6027	120.1708	341 m	16/05/2007	Leng, M.C.; Moir, M.L.	hand collected	under rock, leaf litt	5

33°38'53.09"S	120°11'23.06"E	-33.6480	120.1897	217 m	17/05/2007	Leng, M.C.; Moir, M.L.	hand collected	under rock	1
33°36'15.06"S	120°10'22.00"E	-33.6041	120.1728	163 m	16/05/2007	Leng, M.C.; Moir, M.L.	hand collected	leaf litter	5
33°40'57.00"S	120°17'39.02"E	-33.6825	120.2942	94 m	18/05/2007	Leng, M.C.; Moir, M.L.	tullgren funnel	in leaf litter	3
33°43'38.02"S	120°13'24.06"E	-33.7272	120.2234	179 m	19/05/2007	Leng, M.C.; Moir, M.L.	tullgren funnel	in leaf litter	5
33°36'51.02"S	120°09'08.08"E	-33.6141	120.1522	337 m	13/09/2007	Leng, M.C.; Newell, J.	hand collected	in leaf litter and un	5
33°31'13.09"S	120°03'34.01"E	-33.5203	120.0594	380 m	18/09/2007	Leng, M.C.; Newell, J.	hand collected	in leaf litter	1
33°30'54.00"S	120°02'51.00"E	-33.5150	120.0475	380 m	4/09/2007	Leng, M.C.	hand collected	under rock	1

APPENDIX 3 - RAVENSTHORPE RANGE SHORT-RANGE ENDEMIC SURVEY, TAXON SUMMARY

Phylum	Class	Order	Family	Species	1	2	3	4	5	6	7	8	9	10	11	12	13	14	15	16	17	18	19	20	21	22	23	24	25	26	27	28	29	30	31	32	33	34	35	36		
Arthropoda	Diplopoda	Polydesmida	Paradoxosomatidae	<i>Antichiropus</i> sp. R														X		X					X						X				X				?			
		Spirostreptida	Iulomorphidae	<i>Atelomastix</i> sp. C		X			X	X	X																X							X		X				X		
				<i>Atelomastix</i> sp. P						X	X	X	X	X	X		X		X					X	X	X							X		X				X			
	Arachnida	Pseudoscorpiones	Cheliferidae	<i>Protochelifer</i> sp.						X	X										X																					
			Chthoniidae	<i>Astrochthonius</i> sp.	X	X				X	X									X	X					X									X				X			
				<i>Lagynochthonius australicus</i>	X					X										X	X					X										X						
				Garypidae	<i>Synsphyronus lathrius</i>																																					
					<i>Synsphyronus mimulus</i>																X																					
					Garypinidae	<i>Amblyolpium</i> sp. WA1																																				
					Geogarypidae	<i>Geogarypus taylori</i>																																				
					Olpiidae	<i>Beierolpium bornemisszai</i>																																				
				Scorpiones	Bothriuridae	<i>Cercophonius sulcatus</i>							X																													
					Buthidae	<i>Lychas</i> sp. A																			X							X										
				<i>Isometroides</i> sp.																																						
			Urodacidae	<i>Urodacus novaehollandiae</i>								X	X	X	X	X									X				X				X	X	X							
	Araneae		Selenopidae	<i>Anyhops</i> sp. F	X								X														X															
TOTAL					3	1	1	0	1	2	5	2	3	3	1	1	1	1	2	3	1	4	0	1	2	3	1	0	2	0	2	0	1	3	2	2	3	2	2	1		

37	38	39	40	41	42	43	44	45	46	47	48	49	50	51	52	53	54	55	56	57	58	59	60	61	62	63	64	65	66	67	68	69	70	71	72	73	74	75	76	77	78	79	No. of sites	Distribution elsewhere	Short-range endemic?								
	?										X	X		?	X		X	?																												10	Fitzgerald River NP; Bremer Bay	Yes					
X			X					X		X	X																																				14		Yes				
			X			X				X																																					16	Fitzgerald River NP	Yes				
											X															X																					5	south-western Australia	No				
X			X													X							X					X		X						X	X										17	south-western Australia	No				
			X								X																		X	X														X				11	south-western Australia	No			
																																																2	south-western Australia	No			
			X				X	X			X							X																														5	southern Australia	No			
			X								X																																					1	south-western Australia	Yes			
																	X																				X											2	southern Australia	No			
																	X																																1	uncertain	No		
X							X						X																																				5	south-western Australia	No		
							X	X			X	X																																						5	south-western Australia	No	
							X	X																																											2	uncertain	Uncertain
		X	X					X		X	X		X															X	X																						17	south-western Australia	No
				X					X																																										5	south-western Australia	No
2	1	1	7	1	0	1	4	2	3	3	5	3	1	1	1	2	1	1	0	0	0	1	0	0	1	0	1	1	2	2	0	1	0	0	3	1	2	0	0	0	0	0	0	1									

APPENDIX 4 - RAVENSTHORPE RANGE SHORT-RANGE ENDEMIC SURVEY, IMAGE NAMES

IMAGE NO.

Site WAM 01, Ravensthorpe (1)
Site WAM 01, Ravensthorpe (2)
Site WAM 01, Ravensthorpe (3)
Site WAM 01, Ravensthorpe (4)
Site WAM 01, Ravensthorpe (5)
Site WAM 02, Ravensthorpe (1)
Site WAM 02, Ravensthorpe (2)
Site WAM 02, Ravensthorpe (3)
Site WAM 02, Ravensthorpe (4)
Site WAM 03, Ravensthorpe (1)
Site WAM 03, Ravensthorpe (2)
Site WAM 03, Ravensthorpe (3)
Site WAM 04, Ravensthorpe (1)
Site WAM 04, Ravensthorpe (2)
Site WAM 04, Ravensthorpe (3)
Site WAM 04, Ravensthorpe (4)
Site WAM 05, Ravensthorpe (1)
Site WAM 05, Ravensthorpe (2)
Site WAM 05, Ravensthorpe (3)
Site WAM 05, Ravensthorpe (4)
Site WAM 05, Ravensthorpe (5)
Site WAM 05, Ravensthorpe (6)
Site WAM 05, Ravensthorpe (7)
Site WAM 05, Ravensthorpe (8)
Site WAM 05, Ravensthorpe (9)
Site WAM 06, Ravensthorpe (1)
Site WAM 06, Ravensthorpe (2)
Site WAM 06, Ravensthorpe (3)
Site WAM 06, Ravensthorpe (4)
Site WAM 06, Ravensthorpe (5)
Site WAM 06, Ravensthorpe (6)
Site WAM 07, Ravensthorpe (1)
Site WAM 07, Ravensthorpe (2)
Site WAM 07, Ravensthorpe (3)
Site WAM 07, Ravensthorpe (4)
Site WAM 07, Ravensthorpe (5)
Site WAM 07, Ravensthorpe (6)
Site WAM 08, Ravensthorpe (1)
Site WAM 08, Ravensthorpe (2)
Site WAM 08, Ravensthorpe (3)
Site WAM 08, Ravensthorpe (4)
Site WAM 08, Ravensthorpe (5)
Site WAM 08, Ravensthorpe (6)
Site WAM 08, Ravensthorpe (7)
Site WAM 08, Ravensthorpe (8)
Site WAM 08, Ravensthorpe (9)
Site WAM 09, Ravensthorpe (1)
Site WAM 09, Ravensthorpe (2)

Site WAM 09, Ravensthorpe (3)
Site WAM 09, Ravensthorpe (4)
Site WAM 09, Ravensthorpe (5)
Site WAM 09, Ravensthorpe (6)
Site WAM 09, Ravensthorpe (7)
Site WAM 09, Ravensthorpe (8)
Site WAM 09, Ravensthorpe (9)
Site WAM 10, Ravensthorpe (1)
Site WAM 10, Ravensthorpe (2)
Site WAM 10, Ravensthorpe (3)
Site WAM 10, Ravensthorpe (4)
Site WAM 10, Ravensthorpe (5)
Site WAM 10, Ravensthorpe (6)
Site WAM 10, Ravensthorpe (7)
Site WAM 10, Ravensthorpe (8)
Site WAM 10, Ravensthorpe (9)
Site WAM 11, Ravensthorpe (1)
Site WAM 11, Ravensthorpe (2)
Site WAM 11, Ravensthorpe (3)
Site WAM 11, Ravensthorpe (4)
Site WAM 11, Ravensthorpe (5)
Site WAM 11, Ravensthorpe (6)
Site WAM 11, Ravensthorpe (7)
Site WAM 12, Ravensthorpe (1)
Site WAM 12, Ravensthorpe (2)
Site WAM 12, Ravensthorpe (3)
Site WAM 12, Ravensthorpe (4)
Site WAM 13, Ravensthorpe (1)
Site WAM 13, Ravensthorpe (2)
Site WAM 13, Ravensthorpe (3)
Site WAM 13, Ravensthorpe (4)
Site WAM 13, Ravensthorpe (5)
Site WAM 13, Ravensthorpe (6)
Site WAM 13, Ravensthorpe (7)
Site WAM 13, Ravensthorpe (8)
Site WAM 13, Ravensthorpe (9)
Site WAM 14, Ravensthorpe (1)
Site WAM 14, Ravensthorpe (2)
Site WAM 14, Ravensthorpe (3)
Site WAM 14, Ravensthorpe (4)
Site WAM 14, Ravensthorpe (5)
Site WAM 14, Ravensthorpe (6)
Site WAM 15, Ravensthorpe (1)
Site WAM 15, Ravensthorpe (2)
Site WAM 15, Ravensthorpe (3)
Site WAM 15, Ravensthorpe (4)
Site WAM 15, Ravensthorpe (5)
Site WAM 15, Ravensthorpe (6)
Site WAM 16, Ravensthorpe (1)
Site WAM 16, Ravensthorpe (2)
Site WAM 16, Ravensthorpe (3)
Site WAM 16, Ravensthorpe (4)

Site WAM 17, Ravensthorpe (1)
Site WAM 17, Ravensthorpe (2)
Site WAM 17, Ravensthorpe (3)
Site WAM 17, Ravensthorpe (4)
Site WAM 17, Ravensthorpe (5)
Site WAM 17, Ravensthorpe (6)
Site WAM 17, Ravensthorpe (7)
Site WAM 17, Ravensthorpe (8)
Site WAM 17, Ravensthorpe (9)
Site WAM 18, Ravensthorpe (1)
Site WAM 18, Ravensthorpe (2)
Site WAM 18, Ravensthorpe (3)
Site WAM 18, Ravensthorpe (4)
Site WAM 19, Ravensthorpe (1)
Site WAM 19, Ravensthorpe (2)
Site WAM 19, Ravensthorpe (3)
Site WAM 19, Ravensthorpe (4)
Site WAM 19, Ravensthorpe (5)
Site WAM 20, Ravensthorpe (1)
Site WAM 20, Ravensthorpe (2)
Site WAM 20, Ravensthorpe (3)
Site WAM 20, Ravensthorpe (4)
Site WAM 21, Ravensthorpe (1)
Site WAM 21, Ravensthorpe (2)
Site WAM 21, Ravensthorpe (3)
Site WAM 22, Ravensthorpe (1)
Site WAM 22, Ravensthorpe (2)
Site WAM 22, Ravensthorpe (3)
Site WAM 22, Ravensthorpe (4)
Site WAM 22, Ravensthorpe (5)
Site WAM 22, Ravensthorpe (6)
Site WAM 22, Ravensthorpe (7)
Site WAM 22, Ravensthorpe (8)
Site WAM 22, Ravensthorpe (9)
Site WAM 22, Ravensthorpe (10)
Site WAM 23, Ravensthorpe (1)
Site WAM 23, Ravensthorpe (2)
Site WAM 23, Ravensthorpe (3)
Site WAM 23, Ravensthorpe (4)
Site WAM 23, Ravensthorpe (5)
Site WAM 23, Ravensthorpe (6)
Site WAM 23, Ravensthorpe (7)
Site WAM 24, Ravensthorpe (1)
Site WAM 24, Ravensthorpe (2)
Site WAM 24, Ravensthorpe (3)
Site WAM 24, Ravensthorpe (4)
Site WAM 24, Ravensthorpe (5)
Site WAM 24, Ravensthorpe (6)
Site WAM 24, Ravensthorpe (7)
Site WAM 24, Ravensthorpe (8)
Site WAM 24, Ravensthorpe (9)
Site WAM 24, Ravensthorpe (10)

Site WAM 24, Ravensthorpe (11)
Site WAM 24, Ravensthorpe (12)
Site WAM 24, Ravensthorpe (13)
Site WAM 24, Ravensthorpe (14)
Site WAM 24, Ravensthorpe (15)
Site WAM 24, Ravensthorpe (16)
Site WAM 24, Ravensthorpe (17)
Site WAM 25, Ravensthorpe (1)
Site WAM 25, Ravensthorpe (2)
Site WAM 25, Ravensthorpe (3)
Site WAM 25, Ravensthorpe (4)
Site WAM 25, Ravensthorpe (5)
Site WAM 26, Ravensthorpe (1)
Site WAM 26, Ravensthorpe (2)
Site WAM 26, Ravensthorpe (3)
Site WAM 26, Ravensthorpe (4)
Site WAM 26, Ravensthorpe (5)
Site WAM 26, Ravensthorpe (6)
Site WAM 26, Ravensthorpe (7)
Site WAM 26, Ravensthorpe (8)
Site WAM 26, Ravensthorpe (9)
Site WAM 26, Ravensthorpe (10)
Site WAM 27, Ravensthorpe (1)
Site WAM 27, Ravensthorpe (2)
Site WAM 27, Ravensthorpe (3)
Site WAM 27, Ravensthorpe (4)
Site WAM 27, Ravensthorpe (5)
Site WAM 27, Ravensthorpe (6)
Site WAM 27, Ravensthorpe (7)
Site WAM 27, Ravensthorpe (8)
Site WAM 27, Ravensthorpe (9)
Site WAM 27, Ravensthorpe (10)
Site WAM 27, Ravensthorpe (11)
Site WAM 27, Ravensthorpe (12)
Site WAM 27, Ravensthorpe (13)
Site WAM 27, Ravensthorpe (14)
Site WAM 28, Ravensthorpe (1)
Site WAM 28, Ravensthorpe (2)
Site WAM 28, Ravensthorpe (3)
Site WAM 28, Ravensthorpe (4)
Site WAM 28, Ravensthorpe (5)
Site WAM 29, Ravensthorpe (1)
Site WAM 29, Ravensthorpe (2)
Site WAM 29, Ravensthorpe (3)
Site WAM 29, Ravensthorpe (4)
Site WAM 29, Ravensthorpe (5)
Site WAM 29, Ravensthorpe (6)
Site WAM 29, Ravensthorpe (7)
Site WAM 29, Ravensthorpe (8)
Site WAM 29, Ravensthorpe (9)
Site WAM 29, Ravensthorpe (10)
Site WAM 30, Ravensthorpe (1)

Site WAM 30, Ravensthorpe (2)
Site WAM 30, Ravensthorpe (3)
Site WAM 30, Ravensthorpe (4)
Site WAM 30, Ravensthorpe (5)
Site WAM 30, Ravensthorpe (6)
Site WAM 30, Ravensthorpe (7)
Site WAM 30, Ravensthorpe (8)
Site WAM 30, Ravensthorpe (9)
Site WAM 30, Ravensthorpe (10)
Site WAM 30, Ravensthorpe (11)
Site WAM 30, Ravensthorpe (12)
Site WAM 30, Ravensthorpe (13)
Site WAM 30, Ravensthorpe (14)
Site WAM 30, Ravensthorpe (15)
Site WAM 30, Ravensthorpe (16)
Site WAM 30, Ravensthorpe (17)
Site WAM 30, Ravensthorpe (18)
Site WAM 30, Ravensthorpe (19)
Site WAM 30, Ravensthorpe (20)
Site WAM 30, Ravensthorpe (21)
Site WAM 30, Ravensthorpe (22)
Site WAM 30, Ravensthorpe (23)
Site WAM 30, Ravensthorpe (24)
Site WAM 30, Ravensthorpe (25)
Site WAM 30, Ravensthorpe (26)
Site WAM 30, Ravensthorpe (27)
Site WAM 31, Ravensthorpe (1)
Site WAM 31, Ravensthorpe (2)
Site WAM 31, Ravensthorpe (3)
Site WAM 31, Ravensthorpe (4)
Site WAM 31, Ravensthorpe (5)
Site WAM 31, Ravensthorpe (6)
Site WAM 31, Ravensthorpe (7)
Site WAM 31, Ravensthorpe (8)
Site WAM 31, Ravensthorpe (9)
Site WAM 31, Ravensthorpe (10)
Site WAM 32, Ravensthorpe (1)
Site WAM 32, Ravensthorpe (2)
Site WAM 32, Ravensthorpe (3)
Site WAM 32, Ravensthorpe (4)
Site WAM 32, Ravensthorpe (5)
Site WAM 32, Ravensthorpe (6)
Site WAM 32, Ravensthorpe (7)
Site WAM 32, Ravensthorpe (8)
Site WAM 32, Ravensthorpe (9)
Site WAM 32, Ravensthorpe (10)
Site WAM 33, Ravensthorpe (1)
Site WAM 33, Ravensthorpe (2)
Site WAM 33, Ravensthorpe (3)
Site WAM 33, Ravensthorpe (4)
Site WAM 33, Ravensthorpe (5)
Site WAM 33, Ravensthorpe (6)

Site WAM 34, Ravensthorpe (1)
Site WAM 34, Ravensthorpe (2)
Site WAM 34, Ravensthorpe (3)
Site WAM 34, Ravensthorpe (4)
Site WAM 34, Ravensthorpe (5)
Site WAM 34, Ravensthorpe (6)
Site WAM 34, Ravensthorpe (7)
Site WAM 34, Ravensthorpe (8)
Site WAM 34, Ravensthorpe (9)
Site WAM 34, Ravensthorpe (10)
Site WAM 34, Ravensthorpe (11)
Site WAM 35, Ravensthorpe (1)
Site WAM 35, Ravensthorpe (2)
Site WAM 35, Ravensthorpe (3)
Site WAM 35, Ravensthorpe (4)
Site WAM 35, Ravensthorpe (5)
Site WAM 35, Ravensthorpe (6)
Site WAM 35, Ravensthorpe (7)
Site WAM 35, Ravensthorpe (8)
Site WAM 36, Ravensthorpe (1)
Site WAM 36, Ravensthorpe (2)
Site WAM 36, Ravensthorpe (3)
Site WAM 36, Ravensthorpe (4)
Site WAM 36, Ravensthorpe (5)
Site WAM 37, Ravensthorpe (1)
Site WAM 37, Ravensthorpe (2)
Site WAM 37, Ravensthorpe (3)
Site WAM 37, Ravensthorpe (4)
Site WAM 37, Ravensthorpe (5)
Site WAM 37, Ravensthorpe (6)
Site WAM 37, Ravensthorpe (7)
Site WAM 37, Ravensthorpe (8)
Site WAM 38, Ravensthorpe (1)
Site WAM 38, Ravensthorpe (2)
Site WAM 38, Ravensthorpe (3)
Site WAM 38, Ravensthorpe (4)
Site WAM 39, Ravensthorpe (1)
Site WAM 39, Ravensthorpe (2)
Site WAM 39, Ravensthorpe (3)
Site WAM 39, Ravensthorpe (4)
Site WAM 39, Ravensthorpe (5)
Site WAM 40, Ravensthorpe (1)
Site WAM 40, Ravensthorpe (2)
Site WAM 40, Ravensthorpe (3)
Site WAM 40, Ravensthorpe (4)
Site WAM 40, Ravensthorpe (5)
Site WAM 40, Ravensthorpe (6)
Site WAM 40, Ravensthorpe (7)
Site WAM 40, Ravensthorpe (8)
Site WAM 40, Ravensthorpe (9)
Site WAM 40, Ravensthorpe (10)
Site WAM 41, Ravensthorpe (1)

Site WAM 41, Ravensthorpe (2)
Site WAM 41, Ravensthorpe (3)
Site WAM 41, Ravensthorpe (4)
Site WAM 41, Ravensthorpe (5)
Site WAM 42, Ravensthorpe (1)
Site WAM 42, Ravensthorpe (2)
Site WAM 43, Ravensthorpe (1)
Site WAM 43, Ravensthorpe (2)
Site WAM 43, Ravensthorpe (3)
Site WAM 43, Ravensthorpe (4)
Site WAM 43, Ravensthorpe (5)
Site WAM 44, Ravensthorpe (1)
Site WAM 44, Ravensthorpe (2)
Site WAM 44, Ravensthorpe (3)
Site WAM 44, Ravensthorpe (4)
Site WAM 44, Ravensthorpe (5)
Site WAM 44, Ravensthorpe (6)
Site WAM 44, Ravensthorpe (7)
Site WAM 44, Ravensthorpe (8)
Site WAM 45, Ravensthorpe (1)
Site WAM 45, Ravensthorpe (2)
Site WAM 45, Ravensthorpe (3)
Site WAM 45, Ravensthorpe (4)
Site WAM 45, Ravensthorpe (5)
Site WAM 45, Ravensthorpe (6)
Site WAM 45, Ravensthorpe (7)
Site WAM 45, Ravensthorpe (8)
Site WAM 45, Ravensthorpe (9)
Site WAM 45, Ravensthorpe (10)
Site WAM 45, Ravensthorpe (11)
Site WAM 45, Ravensthorpe (12)
Site WAM 45, Ravensthorpe (13)
Site WAM 45, Ravensthorpe (14)
Site WAM 45, Ravensthorpe (15)
Site WAM 45, Ravensthorpe (16)
Site WAM 45, Ravensthorpe (17)
Site WAM 45, Ravensthorpe (18)
Site WAM 45, Ravensthorpe (19)
Site WAM 45, Ravensthorpe (20)
Site WAM 45, Ravensthorpe (21)
Site WAM 47, Ravensthorpe (1)
Site WAM 47, Ravensthorpe (2)
Site WAM 47, Ravensthorpe (3)
Site WAM 48, Ravensthorpe (1)
Site WAM 48, Ravensthorpe (2)
Site WAM 48, Ravensthorpe (3)
Site WAM 48, Ravensthorpe (4)
Site WAM 49, Ravensthorpe (1)
Site WAM 49, Ravensthorpe (2)
Site WAM 49, Ravensthorpe (3)
Site WAM 49, Ravensthorpe (4)
Site WAM 49, Ravensthorpe (5)

Site WAM 49, Ravensthorpe (6)
Site WAM 49, Ravensthorpe (7)
Site WAM 50, Ravensthorpe (1)
Site WAM 50, Ravensthorpe (2)
Site WAM 50, Ravensthorpe (3)
Site WAM 50, Ravensthorpe (4)
Site WAM 51, Ravensthorpe (1)
Site WAM 51, Ravensthorpe (2)
Site WAM 51, Ravensthorpe (3)
Site WAM 51, Ravensthorpe (4)
Site WAM 51, Ravensthorpe (5)
Site WAM 51, Ravensthorpe (6)
Site WAM 52, Ravensthorpe (1)
Site WAM 52, Ravensthorpe (2)
Site WAM 52, Ravensthorpe (3)
Site WAM 52, Ravensthorpe (4)
Site WAM 53, Ravensthorpe (1)
Site WAM 55, Ravensthorpe (1)
Site WAM 55, Ravensthorpe (2)
Site WAM 55, Ravensthorpe (3)
Site WAM 56, Ravensthorpe (1)
Site WAM 56, Ravensthorpe (2)
Site WAM 56, Ravensthorpe (3)
Site WAM 57, Ravensthorpe (1)
Site WAM 57, Ravensthorpe (2)
Site WAM 57, Ravensthorpe (3)
Site WAM 57, Ravensthorpe (4)
Site WAM 57, Ravensthorpe (5)
Site WAM 57, Ravensthorpe (6)
Site WAM 58, Ravensthorpe (1)
Site WAM 58, Ravensthorpe (2)
Site WAM 59, Ravensthorpe (1)
Site WAM 59, Ravensthorpe (2)
Site WAM 59, Ravensthorpe (3)
Site WAM 59, Ravensthorpe (4)
Site WAM 59, Ravensthorpe (5)
Site WAM 59, Ravensthorpe (6)
Site WAM 59, Ravensthorpe (7)
Site WAM 59, Ravensthorpe (8)
Site WAM 60, Ravensthorpe (1)
Site WAM 60, Ravensthorpe (2)
Site WAM 60, Ravensthorpe (3)
Site WAM 60, Ravensthorpe (4)
Site WAM 60, Ravensthorpe (5)
Site WAM 61, Ravensthorpe (1)
Site WAM 61, Ravensthorpe (2)
Site WAM 61, Ravensthorpe (3)
Site WAM 61, Ravensthorpe (4)
Site WAM 61, Ravensthorpe (5)
Site WAM 62, Ravensthorpe (1)
Site WAM 62, Ravensthorpe (2)
Site WAM 62, Ravensthorpe (3)

Site WAM 62, Ravensthorpe (4)
Site WAM 62, Ravensthorpe (5)
Site WAM 62, Ravensthorpe (6)
Site WAM 63, Ravensthorpe (1)
Site WAM 63, Ravensthorpe (2)
Site WAM 63, Ravensthorpe (3)
Site WAM 64, Ravensthorpe (1)
Site WAM 64, Ravensthorpe (2)
Site WAM 65, Ravensthorpe (1)
Site WAM 65, Ravensthorpe (2)
Site WAM 65, Ravensthorpe (3)
Site WAM 65, Ravensthorpe (4)
Site WAM 65, Ravensthorpe (5)
Site WAM 65, Ravensthorpe (6)
Site WAM 65, Ravensthorpe (7)
Site WAM 65, Ravensthorpe (8)
Site WAM 66, Ravensthorpe (1)
Site WAM 66, Ravensthorpe (2)
Site WAM 66, Ravensthorpe (3)
Site WAM 66, Ravensthorpe (4)
Site WAM 67, Ravensthorpe (1)
Site WAM 67, Ravensthorpe (2)
Site WAM 67, Ravensthorpe (3)
Site WAM 68, Ravensthorpe (1)
Site WAM 68, Ravensthorpe (2)
Site WAM 68, Ravensthorpe (3)
Site WAM 69, Ravensthorpe (1)
Site WAM 69, Ravensthorpe (2)
Site WAM 69, Ravensthorpe (3)
Site WAM 70, Ravensthorpe (1)
Site WAM 70, Ravensthorpe (2)
Site WAM 70, Ravensthorpe (3)
Site WAM 70, Ravensthorpe (4)
Site WAM 70, Ravensthorpe (5)
Site WAM 70, Ravensthorpe (6)
Site WAM 70, Ravensthorpe (7)
Site WAM 70, Ravensthorpe (8)
Site WAM 71, Ravensthorpe (1)
Site WAM 71, Ravensthorpe (2)
Site WAM 71, Ravensthorpe (3)
Site WAM 72, Ravensthorpe (1)
Site WAM 72, Ravensthorpe (2)
Site WAM 72, Ravensthorpe (3)
Site WAM 72, Ravensthorpe (4)
Site WAM 72, Ravensthorpe (5)
Site WAM 73, Ravensthorpe (1)
Site WAM 73, Ravensthorpe (2)
Site WAM 73, Ravensthorpe (3)
Site WAM 73, Ravensthorpe (4)
Site WAM 74, Ravensthorpe (1)
Site WAM 74, Ravensthorpe (2)
Site WAM 74, Ravensthorpe (3)

Site WAM 74, Ravensthorpe (4)
Site WAM 74, Ravensthorpe (5)
Site WAM 75, Ravensthorpe (1)
Site WAM 75, Ravensthorpe (2)
Site WAM 75, Ravensthorpe (3)
Site WAM 75, Ravensthorpe (4)
Site WAM 76, Ravensthorpe (1)
Site WAM 76, Ravensthorpe (2)
Site WAM 76, Ravensthorpe (3)
Site WAM 76, Ravensthorpe (4)
Site WAM 76, Ravensthorpe (5)
Site WAM 78, Ravensthorpe (1)
Site WAM 78, Ravensthorpe (2)
Site WAM 78, Ravensthorpe (3)
Site WAM 79, Ravensthorpe (1)
Site WAM 79, Ravensthorpe (2)
Site WAM 79, Ravensthorpe (3)
Site WAM 79, Ravensthorpe (4)
Site WAM 79, Ravensthorpe (5)