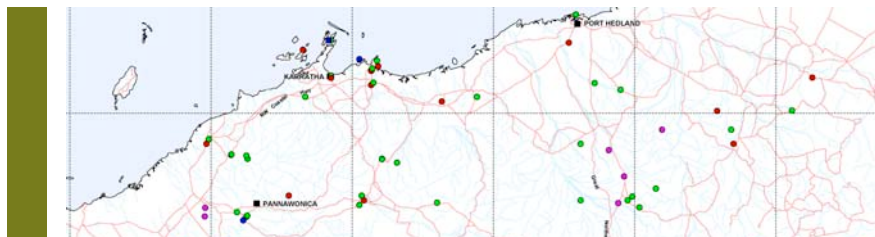




Hope Downs IV Northern Quoll Position Paper



Prepared for Rio Tinto Iron Ore on behalf of Hamersley HMS

April 2009



© Biota Environmental Sciences Pty Ltd 2009
ABN 49 092 687 119
Level 1, 228 Carr Place
Leederville Western Australia 6007
Ph: (08) 9328 1900 Fax: (08) 9328 6138

Project No.: 514

Prepared by: Erin Harris, Garth Humphreys,
Roy Teale

Checked by: Garth Humphreys

Approved for Issue: Garth Humphreys

This document has been prepared to the requirements of the client identified on the cover page and no representation is made to any third party. It may be cited for the purposes of scientific research or other fair use, but it may not be reproduced or distributed to any third party by any physical or electronic means without the express permission of the client for whom it was prepared or Biota Environmental Sciences Pty Ltd.

This report has been designed for double-sided printing. Hard copies supplied by Biota are printed on recycled paper.

Hope Downs IV Northern Quoll Position Paper

Contents

| | | |
|------------|---|-----------|
| 1.0 | Introduction | 7 |
| 1.1 | Project Background | 7 |
| 1.2 | Scope and Role of this Report | 7 |
| 2.0 | Background on the Northern Quoll | 9 |
| 2.1 | Australian Distribution | 9 |
| 2.2 | Biology | 9 |
| 2.3 | Conservation Status | 10 |
| 3.0 | Methods | 11 |
| 3.1 | Database Searches | 11 |
| 3.2 | Literature Review | 11 |
| 3.3 | Spatial Analysis | 11 |
| 3.4 | Study Limitations | 11 |
| 4.0 | Results | 13 |
| 4.1 | Northern Quoll Records from the Pilbara | 13 |
| 4.2 | Northern Quoll Occurrence within IBRA Subregions | 13 |
| 4.3 | Northern Quoll Occurrence within Land Systems | 15 |
| 4.4 | Null Elliott Trapping | 16 |
| 5.0 | Discussion | 19 |
| 5.1 | Identified Threatening Processes | 19 |
| 5.2 | Status of the Northern Quoll in the Pilbara Bioregion | 20 |
| 5.3 | Hope Downs IV Project | 21 |
| 6.0 | References | 23 |

Appendix 1

Scientific and Grey Literature References for Northern Quoll *Dasyurus hallucatus* Records and Null Elliott Trapping Records

Tables

| | | |
|------------|--|----|
| Table 4.1: | Relationship between Northern Quoll records and Land Systems in the Pilbara bioregion (Land Systems in grey contain core habitats for the Northern Quoll). | 15 |
|------------|--|----|

Figures

| | | |
|-------------|--|----|
| Figure 2.1: | Australian distribution of the Northern Quoll <i>Dasyurus hallucatus</i> as shown on DEWHA (2009). | 9 |
| Figure 4.1: | Distribution of Northern Quoll <i>Dasyurus hallucatus</i> records in the Pilbara. | 14 |
| Figure 4.2: | Sites in the Pilbara where Elliott trapping has been completed and no Northern Quolls were recorded. | 17 |
| Figure 5.1: | Current and projected range of invasive cane toads in Australia (source: Urban et al. 2007). | 19 |

This page intentionally blank

1.0 Introduction

1.1 Project Background

The Hope Downs IV project is a proposed new mining development being progressed by Hamersley HMS Pty Ltd (Hamersley HMS) on behalf of the Hope Downs Joint Venture Participants, which includes Rio Tinto Iron Ore (RTIO). The project is situated adjacent to the Great Northern Highway, approximately 33 km north-west of Newman in the Pilbara region of Western Australia.

The Hope Downs IV project was referred to the Western Australian Environmental Protection Authority (EPA) under Section 38 of the *Environmental Protection Act 1986*. The EPA subsequently determined that the project would be formally assessed at the level of Public Environmental Review (PER).

The proposed action of constructing the Hope Downs IV project was also referred to the Federal Department of the Environment, Water, Heritage and the Arts (DEWHA) in accordance with the Commonwealth *Environment Protection and Biodiversity Conservation (EPBC) Act 1999*. DEWHA provided formal notification to Hamersley HMS that the Hope Downs IV project was determined to be a Controlled Action under this act on the basis of the 'Threatened Species and Communities' matter of National Environmental Significance (NES).

1.2 Scope and Role of this Report

The DEWHA determination of a Controlled Action was based solely on the 'Threatened Species and Communities' NES matter and that no other NES matters were deemed relevant. The advice received from DEWHA cited the Northern Quoll *Dasyurus hallucatus* as a specific species relevant to the decision. As this species was not recorded from the Hope Downs IV project area during systematic fauna surveys, RTIO will seek a formal reconsideration of the decision to treat the proposal as a Controlled Action.

As part of this reconsideration, RTIO, on behalf of Hamersley HMS, commissioned Biota Environmental Sciences (Biota) to prepare a position paper on the Northern Quoll, focusing on the Pilbara bioregion. The scope of this exercise was to:

- provide a summary background on the general distribution, ecology and conservation status of the Northern Quoll, with particular reference to the Pilbara region;
- complete an updated consolidation of all readily available records of the species in the Pilbara region, including whether there is any relationship with Land Systems, sub-bioregional boundaries or other geographical divides;
- carry out a comparison of this with database results for the species from the DEWHA *EPBC Act 1999* search tool;
- discuss the background and basis to the Commonwealth listing of the species, including identified threatening processes and their relevance to Pilbara populations; and
- provide a consolidated statement on the status of the Northern Quoll in the Pilbara region.

Specific comments on the risk of the Northern Quoll occurring in the Hope Downs IV project area are also provided.

This page intentionally blank.

2.0 Background on the Northern Quoll

2.1 Australian Distribution

The Northern Quoll *Dasyurus hallucatus* had a pre-European distribution that extended across northern Australia from North-west Cape, Western Australia to south-east Queensland, but its range has contracted in recent years (Braithwaite and Griffiths 1994). The species' distribution is now restricted to six main areas:

- the north and western top end of the Northern Territory;
- north of Cape York;
- the Atherton-Cairns area,
- the Carnarvon Range-Bowen area of Queensland (Menkhorst 2001),
- the northwest Kimberley and
- the Pilbara region of Western Australia (Braithwaite and Griffiths 1994) (Figure 2.1).

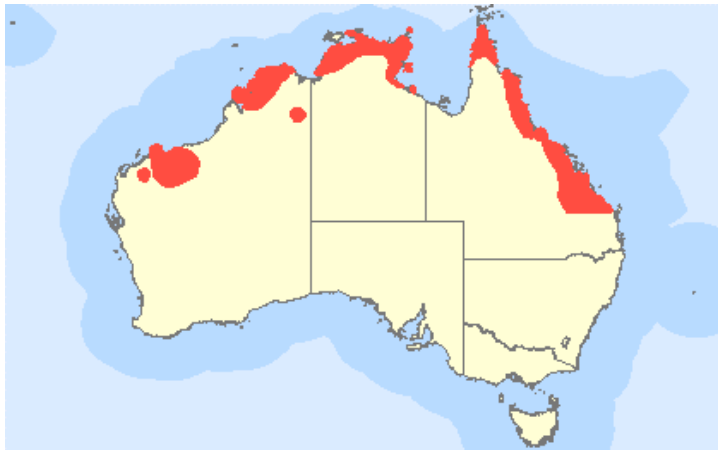


Figure 2.1: Australian distribution of the Northern Quoll *Dayurus hallucatus* as shown on DEWHA (2009).

The Northern Quoll also occurs on numerous islands off the Australian coast (Abbott and Burbidge 1995, Burbidge and McKenzie 1978; How et al. 2006). An updated and more detailed review of the distribution of the Northern Quoll specific to the Pilbara bioregion is provided in Section 4.0.

2.2 Biology

The Northern Quoll is a medium-sized dasyurid marsupial, with adult weight ranging from 300 to 1,200 g. It is considered a partially arboreal and aggressive carnivore, preying on a varied diet of small invertebrates and vertebrates, including lizards, birds, snakes, small mammals and frogs (Oakwood 1997). It is also known to feed on fleshy fruit and carrion. The Northern Quoll is mostly nocturnal, although crepuscular (dusk and dawn) activity also occurs. The species makes a den in spaces amongst rocks or in log and tree hollows. Many records from the Pilbara bioregion have come from mesa and breakaway features abutting large creeks (Garth Humphreys, Biota, pers. obs.) and from boulder tors of the Abydos-Woodstock Plain (How et al. 1991).

The Northern Quoll is a short-lived mammal, with both sexes maturing at 11 months. Females reproduce only once each year and all males die shortly after reproducing (Dickman and Braithwaite 1992, Oakwood 2000). The discrete male cohorts that arise within populations can make quolls more susceptible to local population extinctions. If no juvenile male quolls survive to adulthood, there will be no males available for mating the following year and the local population will rapidly go extinct (Braithwaite and Griffiths 1994, Oakwood 2000).

Therefore, any factor that results in significant increases in mortality rates of female and juvenile quolls could result in the loss of local populations.

2.3 Conservation Status

Dasyurus hallucatus is specially protected under both State and Commonwealth legislation. The species is listed as Schedule 1 ('Endangered') under the *Western Australian Wildlife Conservation Act 1950-1979* and is also listed as 'Endangered' under the *Commonwealth EPBC Act 1999*.

The listing of the Northern Quoll as a threatened taxon by the Australian Government in 2004 was largely predicated on the dramatic decline of populations of the species across northern Australia associated with the spread of the Cane Toad *Bufo marinus*. To date, the species remains widely distributed and relatively common in the west Kimberley, although this is likely to change with the arrival of the Cane Toad in the next several years (see Section 5.1). Pilbara populations are currently unaffected by this introduced species, though this may change in the future (Section 5.1).

3.0 Methods

3.1 Database Searches

Searches were conducted of the DEC Threatened Fauna database, the WA Museum FaunaBase database and the Biota Environmental Sciences Internal Database for Northern Quoll *Dasyurus hallucatus* records within the Pilbara bioregion.

The Biota Internal Database was additionally searched to identify all records of Elliott trapping that not have not yielded Northern Quoll records. As most records from the bioregion have come from Elliott trapping, these null data are indicative of areas where *D. hallucatus* was not detected by systematic surveys (see Section 4.4 for a fuller discussion).

Point searches with a 50 km radius were conducted of the *EPBC Act 1999* Protected Matters database for four locations representative of the spatial extent of the Pilbara bioregion:

- Pannawonica 21°38'S and 116°19'E;
- Port Hedland 20°18'S and 118°36'E;
- Nullagine 21°53'S and 120°06'E; and
- Newman 23°21'S and 119°43'E.

A search of the Protected Matters database was also conducted for the Hope Downs IV project area.

3.2 Literature Review

A literature review of both scientific and 'grey' literature was also undertaken concurrently with the database searches (Section 6.0 and Appendix 1). This review included collating any records of Northern Quoll observations, and also any records of Elliott trapping within the Pilbara that did not result in Northern Quoll captures.

3.3 Spatial Analysis

The locations of all collated Northern Quoll records were captured in MapInfo Professional v8 Geographical Information System (GIS). These point data were then used to compile updated distribution maps for the Pilbara region that are validated on specimen database and survey records. MapInfo was then used to intersect the records with bioregion and Land System spatial data to examine any broad distributional patterns for the species occurrence in the region.

3.4 Study Limitations

This report, while collating large amounts of data, should not be considered as an exhaustive account of all Northern Quoll records for the Pilbara bioregion. Database searches and literature reviews were undertaken where records were accessible and in the time permissible. It is therefore probable that not all observations of the Northern Quoll in the Pilbara bioregion have been documented. However, as the State-owned databases of the WA Museum and the DEC were searched, it is expected that most published records have been captured here.

The coverage of this study is also restricted to areas of the Pilbara bioregion where systematic biological surveys have been conducted.

This page intentionally blank.

4.0 Results

4.1 Northern Quoll Records from the Pilbara

The compiled Northern Quoll records show a wide distribution across the Pilbara, with the species having been recorded from 219 locations across the extent of the bioregion (accumulated over several decades by the WA Museum, DEC and others). Confirmed locations where the species has been recorded in the Pilbara are shown in Figure 4.1.

Searches conducted of the *EPBC Act 1999* Protected Matters database yielded the Northern Quoll as “Species or species habitat may occur within area” for Port Hedland, Pannawonica, Nullagine and the Hope Down IV project area. The Northern Quoll was not listed in the Protected Matters database for Newman (33 km from Hope Downs IV).

4.2 Northern Quoll Occurrence within IBRA Subregions

The Interim Biogeographic Regionalisation for Australia (IBRA) recognises 85 bioregions (May and McKenzie 2003). The Pilbara bioregion is divided into four subregions: Hamersley, Fortescue Plains, Chichester and Roebourne Plains, and are described by May and McKenzie (2003) as the four major components of the Pilbara Craton:

- Chichester (PIL1): undulating Archaean granite and basalt plains include significant areas of basaltic ranges. Plains support a shrub steppe characterised by *Acacia inaequilatera* over *Triodia wiseana* (formerly *Triodia pungens*) hummock grasslands, while *Eucalyptus leucophloia* tree steppes occur on ranges;
- Fortescue Plains (PIL2): alluvial plains and river frontage. Extensive salt marsh, mulga-bunch grass, and short grass communities on alluvial plains in the east. Deeply incised gorge systems in the western (lower) part of the drainage. River gum woodlands fringe the drainage lines. Northern limit of Mulga (*Acacia aneura*). An extensive calcrete aquifer feeds numerous permanent springs in the central Fortescue, supporting large permanent wetlands with extensive stands of river gum and cadjeput *Melaleuca* woodlands;
- Hamersley (PIL3): mountainous area of Proterozoic sedimentary ranges and plateaux, dissected by gorges (basalt, shale and dolerite). Mulga low woodland over bunch grasses on fine textured soils in valley floors, and *Eucalyptus leucophloia* over *Triodia brizoides* on skeletal soils of the ranges; and
- Roebourne Plains (PIL4): quaternary alluvial and older colluvial coastal and sub-coastal plains with a grass savannah of mixed bunch and hummock grasses, and dwarf shrub steppe of *Acacia stellaticeps* or *A. pyrifolia* and *A. inaequilatera*. Uplands are dominated by *Triodia* hummock grasslands. Ephemeral drainage lines support *Eucalyptus victrix* or *Corymbia hamersleyana* woodlands. Samphire, *Sporobolus* and mangal occur on marine alluvial flats and river deltas.

These subregions are largely equivalent to the physiographic regions of Beard (1975), although the coastal portion of Beard's Abydos Plain unit comprises the Roebourne Plains subregion, while the inland portion is included within the Chichester subregion.

Northern Quoll records have been obtained across all four of the Pilbara subregions (Figure 4.1).

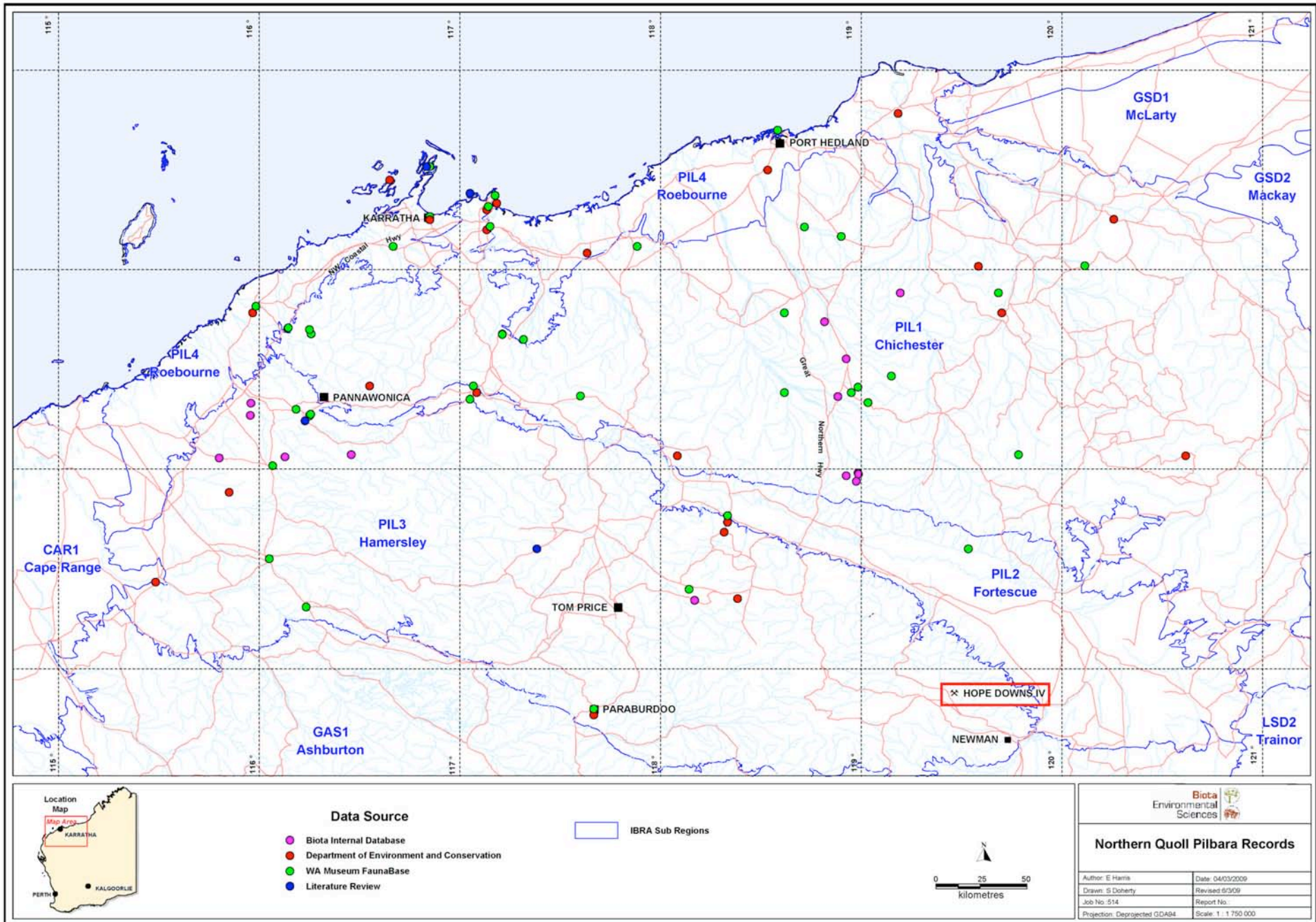


Figure 4.1: Distribution of Northern Quoll *Dasyurus hallucatus* records in the Pilbara.

4.3 Northern Quoll Occurrence within Land Systems

Land Systems (Rangelands) mapping covering the study area has been prepared by the Western Australian Department of Agriculture (van Vreeswyk et al. 2004). Land Systems are comprised of repeating patterns of topography, soils, and vegetation (Christian and Stewart 1953) (i.e. a series of "land units" that occur on characteristic physiographic types within the Land System). A total of 107 Land Systems occur in the Pilbara bioregion. [This information was obtained by combining the Land System mapping for the Pilbara (van Vreeswyk et al. 2004) and Ashburton (Payne et al. 1988), and intersecting this with the Pilbara bioregion (Environment Australia 2000) in ArcView 3.2a.].

Of the 219 Northern Quoll records compiled for the Pilbara region, 49 occurred within the Rocklea Land System, 38 within the Macroy Land System and 31 within the Robe Land System (Table 4.1). These three Land Systems contain rocky hills, mesas, plateaux, drainages and granite tor fields, representing the Northern Quoll's preferred habitat in the Pilbara (see Section 2.2). *D. hallucatus* has also been recorded relatively frequently from the Capricorn, Wona and River Land Systems, which also include hills, ridges and major drainage habitats (Table 4.1). These six Land Systems account for 74% of the Northern Quoll records from the region.

While this regional analysis indicates these Land Systems contain the preferred habitats for the species, Northern Quolls also occur across a wide range of other units throughout the Pilbara bioregion. This is illustrated by the large number (26) of different land systems where the Northern Quoll has been recorded (Table 4.1). Many of the records outside of the Northern Quolls preferred habitat are likely to be foraging individuals.

Table 4.1: Relationship between Northern Quoll records and Land Systems in the Pilbara bioregion (Land Systems in grey contain core habitats for the Northern Quoll).

| Land System | No. of Records | Description |
|-------------|----------------|--|
| Rocklea | 49 | Basalt hills, plateaux, lower slopes and minor stony plains supporting hard spinifex (and occasionally soft spinifex) grasslands. |
| Macroy | 38 | Stony plains and occasional tor fields based on granite supporting hard and soft spinifex grasslands. |
| Robe | 31 | Low plateaux, mesas and buttes of limonites supporting soft spinifex (and occasionally hard spinifex) grasslands. |
| Capricorn | 10 | Hills and ridges of sandstone and dolomite supporting low shrublands or shrubby spinifex grasslands. |
| Wona | 10 | Basalt upland gilgai plains supporting tussock grasslands and minor hard spinifex grasslands. |
| River | 8 | Active flood plains, major rivers and banks supporting grassy eucalypt woodlands, tussock grasslands and soft spinifex grasslands. |
| Newman | 7 | Rugged jaspilite plateaux, ridges and mountains supporting hard spinifex grasslands. |
| Horseflat | 7 | Gilgaied clay plains supporting tussock grasslands and minor grassy snakewood shrublands. |
| McKay | 5 | Hills, ridges, plateaux remnants and breakaways of meta sedimentary and sedimentary rocks supporting hard spinifex grasslands. |
| Boolgeeda | 5 | Stony lower slopes and plains below hill systems supporting hard and soft spinifex grasslands or mulga shrublands. |
| Calcrete | 5 | Low calcrete platforms and plains supporting shrubby hard spinifex grasslands. |
| Uaroo | 3 | Broad sandy plains supporting shrubby hard and soft spinifex grasslands. |
| Boolaloo | 3 | Granite hills, domes and tor fields and sandy plains with shrubby spinifex grasslands. |
| Littoral | 2 | Bare coastal mudflats with mangroves on seaward fringes, samphire flats, sandy islands, coastal dunes and beaches. |

Table 4.1: Relationship between Northern Quoll records and Land Systems in the Pilbara bioregion (Land Systems in grey contain core habitats for the Northern Quoll).

| Land System | No. of Records | Description |
|---------------|----------------|--|
| Mosquito | 2 | Stony plains and prominent ridges of schist and other metamorphic rocks supporting hard spinifex grasslands. |
| Urandy | 2 | Stony plains, alluvial plains and drainage lines supporting shrubby soft spinifex grasslands. |
| White Springs | 2 | Stony gilgai plains supporting tussock grasslands and hard spinifex grasslands. |
| Houndstooth | 1 | Rough shale hills, stony plains and broad drainage floors supporting hard spinifex grasslands and sparse shrubs. |
| Ruth | 1 | Hills and ridges of volcanic and other rocks supporting hard spinifex (occasionally soft spinifex) grasslands. |
| Carpentaria | 1 | Coastal flats, associated sandy margins and dunes; saline sands and muds; paperbark thickets, samphire meadows, extensive bare mud flats with fringing mangrove forests. |
| Marandoo | 1 | Basalt hills and restricted stony plains supporting grassy mulga shrublands. |
| Pago | 1 | Gently undulating sandstone country with open forest vegetation and deep sandy soils, found throughout the area except in the extreme west. |
| Paraburdoo | 1 | Basalt derived stony gilgai plains and stony plains supporting snakewood and mulga shrublands with spinifex, chenopods and tussock grasses. |
| Stuart | 1 | Gently undulating stony plains supporting hard and soft spinifex grasslands and snakewood shrublands. |
| Talga | 1 | Hills and ridges of greenstone and chert and stony plains supporting hard and soft spinifex grasslands. |
| Turee | 1 | Stony alluvial plains with gilgaied and non-gilgaied surfaces supporting tussock grasslands and grassy shrublands of mulga and snakewood. |

4.4 Null Elliott Trapping

Numerous fauna surveys have been conducted throughout the Pilbara region (see Section 6.0 and Appendix 1), with many utilising Elliott traps as part of their methodology. Elliott traps are one of the suitable methods for trapping Northern Quolls, with many of the records collated by this study having been yielded via this method. Previous sampling experience along the Robe River valley (ecologia 1991), on the Mitchell Plateau, on offshore islands of the Kimberley and on the Abydos-Woodstock plain (How et al. 1991), have indicated that the use of appropriately baited Elliott traps is suitable to demonstrate the presence of Northern Quolls if they occur in an area.

A large number of systematic fauna surveys have been undertaken in the area surrounding the Hope Downs IV project and the general Newman locality. Elliott trapping has been completed at nearby Hope Downs I and II, Yandicoogina, Weeli Wolli Creek, West Angelas, Mt Whaleback, Orebody 18 and Ophthalmia Dam, none of which have yielded any Northern Quoll records (Figure 4.2). The closest Northern Quoll specimen record is 101 km to the north of the Hope Downs IV project area, to the north of the Fortescue Marshes. The next closest record is at Marandoo, 140 km west-north-west of the Hope Downs IV project area (Figure 4.1). In addition, Ninnox (2008) undertook Elliott trapping in several areas of the Hope Downs IV project area specifically, with a total of 1,420 Elliott trap nights over several survey phases. Not a single Northern Quoll was recorded from this survey effort.

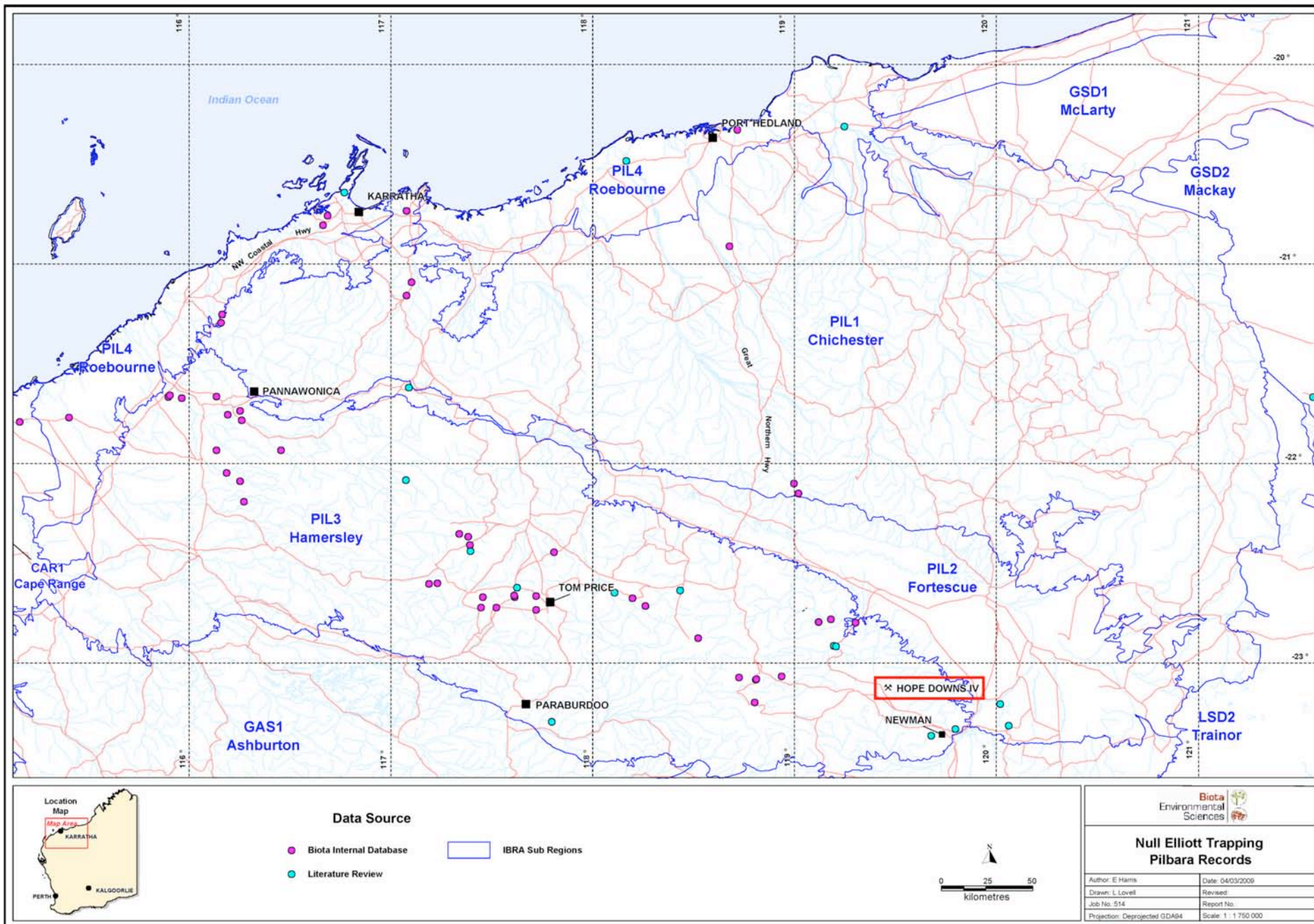


Figure 4.2: Sites in the Pilbara where Elliott trapping has been completed and no Northern Quolls were recorded.

This null result from Elliot trap effort in the south-eastern Pilbara includes targeting areas such as Weeli Wolli Springs (some 30 km to the north of Hope Downs IV), which is good prospective habitat for *Dasyurus hallucatus*. Habitats present in this area comprise a spring-driven creekline with large mature eucalypt and *Melaleuca* trees full of hollows, adjacent to rocky cliffs with numerous *Zygomys argurus* (a primary prey item for the species in the Pilbara). No Northern Quolls have been recorded from this area, despite extensive Elliott trapping associated with the Weeli Wolli Creek Surveys (ecologia job), the Hope Down mine biological survey (2,710 Elliot trap nights; ecologia 1997) and Hope Downs Rail options fauna survey (800 Elliot trap nights; Halpern Glick Maunsell 2000). The species was also not recorded during several years of Pebble Mound Mouse *Pseudomys chapmani* monitoring conducted using Elliott traps in similar habitats in the immediately locality at Marillana Creek (a total of over 7,000 Elliot trap nights over several years; Halpern Glick Maunsell 1998). Importantly, this total trap effort of over 10,000 Elliott trap nights as been spread over a number of years and seasons, making it probable that at least one individual would have been trapped at some point in time if the species occurred in the south-east Pilbara.

5.0 Discussion

5.1 Identified Threatening Processes

DEWHA (2009) identifies three threatening processes for the Northern Quoll in its conservation advice arising from the species' Commonwealth listing:

1. inappropriate fire regimes;
2. predation following fire; and
3. lethal toxic ingestion of Cane Toad toxin.

Habitat loss through too inappropriate fire regimes and related land management have been suggested as contributing factors to the decline in Northern Quoll populations in Queensland and the Northern Territory by several studies (summarised in DEWHA 2009). Change in vegetation structure and increased predation rates post-fire were identified as the key processes affecting these *Dasyurus hallucatus* populations (Oakwood 2000). Fire may also be locally detrimental to foraging habitat for the species in the Pilbara, but mesa, gorges and boulder pile habitats, may act as local population refugia for the species in the bioregion during these events. Fire is also a natural landscape process in the Pilbara region, and many events in the Pilbara are part of the normal cycle rather than reflecting any recent anthropogenic increase or broad scale land management practices.

Predation of Northern Quolls can occur via domestic dogs, feral cats, dingos, foxes, owls, kites and snakes (Woinarski et al. 2008). Death due to motor vehicle collision is also a cause of individual mortality of Northern Quolls in the Pilbara bioregion. While fire and predation undoubtedly place pressure on Northern Quoll populations, it seems likely that the species has persisted in the bioregion with these processes occurring over the long term.

The most significant factor contributing to the decline of the species in Queensland and the Northern Territory is the invasion of the Cane Toad *Bufo marinus*. Cane Toads are potential prey for Northern Quolls and can release a powerful toxin from their parotoid glands during predation events, which can result in the death of the Quoll. The Cane Toad does not currently occur in the Pilbara, but has recently been confirmed entering the Kimberley (DEC 2009).

Urban et al. (2007) predict the movement of the Cane Toad into Western Australia based on climate and habitat requirements. Figure 5.1 illustrates Urban et al.'s (2007) projected range for the Cane Toad. They state: "(a) Cane toads now inhabit approximately 1.2 million km² of Australia (dark grey). (b) The predicted distribution of cane toads (black) based on annual maximum and minimum temperature, their squared terms, annual precipitation, precipitation, topographical variation, elevation, annual evaporation, minimum moisture index per cent built-up area and paved road density as estimated by model-averaged logistic regression at a data-derived threshold of 0.505. The future range area of cane toads predicted by this model (2.0 million km²) is almost triple the projections from the most recent model (0.7 million km²) based on its native limits (Sutherst et al. 1995)." (Urban et al. 2007).

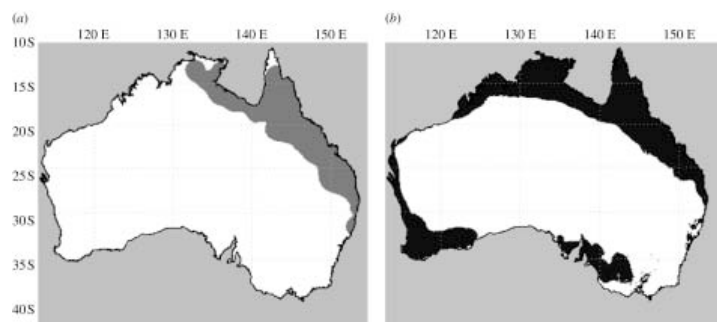


Figure 5.1: Current and projected range of invasive cane toads in Australia (source: Urban et al. 2007).

It is noteworthy that Urban et al. (2007) do not predict the expansion of the Cane Toad's range into the inland Pilbara (Figure 5.1 (b)).

It is also of interest that recent work in northern Queensland has documented the persistence of Northern Quoll populations in areas inhabited by the Cane Toad *Bufo marinus* (Woinarski et al. 2008). It is not yet understood how these populations have persisted, but the current theories include:

- population-specific genetic or behavioural characteristics;
- the occurrence of Northern Quolls in habitat where Cane Toad numbers are low; or
- the invasion of Cane Toads into habitat that is highly suitable for Northern Quolls,

with either of the latter two possibilities potentially enabling the Northern Quoll population to sustain a small amount of Cane Toad-related mortalities. This uncertainty means it is not possible to determine whether there are habitats suitable for Quoll survival post-Cane Toad invasion in the parts of the Quoll's range where the introduced species has not yet reached (HLA – Envirosciences 2004).

5.2 Status of the Northern Quoll in the Pilbara Bioregion

The Northern Quoll records for the Pilbara bioregion demonstrate that the species is widespread throughout the majority of the region, having been recorded from 219 locations, across a wide range of Land Systems (Table 4.1). Available data suggest however, that the species is absent from the south-eastern most portion of the Pilbara bioregion. The Land Systems where the species has most commonly been recorded comprise habitats such as rocky hills, mesas, plateaux, major drainages and granite tor fields.

Northern Quoll populations experience natural fluctuations due to the species life history and other stochastic factors (Section 2.2). There are no long-term data sets that adequately document this for individual populations in the Pilbara. However, variation in abundance at habitat, seasonal and decadal levels recorded in the northern Kimberley suggests that Northern Quoll populations are highly variable in both temporal and spatial scales. Long-term studies conducted at the Mitchell Plateau, recorded large fluctuations in this species, with a substantial population disappearing after 20 years without any apparent threatening process (Ric How, WA Museum, pers. comm.; Schmitt et al. 1989). This suggests that natural population peaks and troughs occur in Northern Quoll populations that are unrelated to any anthropogenic source.

While more limited information is available from the Pilbara, the data suggest that the same situation exists in that bioregion. A population of *Dasyurus hallucatus* was documented by ecologia (1991) on the Robe River adjacent to mesa landforms at the Mesa J mine (with 29 individuals recorded). Subsequent targeted trapping in 2005 (Biota and How 2005) failed to record any individuals at the same location, and only a single individual from the Robe River locality (some 50 km to the west of Mesa J). Three Northern Quolls were however subsequently recorded from 15 km to the west of Mesa J the following year (Biota 2006). Biota and How (2005) suggest that these types of fluctuations may be a function of seasonal conditions in years preceding surveys and related prey item availability. It follows that limited conclusions on the impacts of environmental disturbance on Quolls can be drawn from short-term studies.

Searches of the Federal *EPBC Act 1999* Protected Matters database for areas across the Pilbara bioregion revealed that this database shows the Northern Quoll or its habitat possibly occurring throughout the entire Pilbara (with the exception of Newman; Section 4.1). This implies that the Northern Quoll will be identified by the Protected Matters Search Tool as a potential matter National Environmental Significance for almost any location in the Pilbara, whether or not the species or its core habitat occurs in the area in question.

There is a clear disjunct between the Pilbara Northern Quoll populations and those of the Kimberley. Recent genetic work indicates differentiation of the Kimberley and Pilbara Northern Quoll populations (How et al. 2009). It is therefore relevant to review the basis for the species'

listing and conservation concern specific to the Pilbara setting. *Dasyurus hallucatus* is widely distributed through the Pilbara of Western Australia (Figure 4.1) but the status of resident populations has not been studied in any detail. This observation is in contrast with The Action Plan for Australian Marsupials and Monotremes, which suggests that there has been a "...substantial decline in the Pilbara...", citing Braithwaite and Griffiths (1994) as the source for this conclusion. This statement is paraphrased by DEWHA (2009) in its Northern Quoll conservation assessment and advice.

However, Braithwaite and Griffiths (1994) make no statement about a decline in Pilbara populations specifically, other than: "Owl deposits reveal that it was formerly common throughout the Pilbara well into the arid zone", and then in turn cite Morton and Baynes (1985). There is no comment in the Braithwaite and Griffiths (1994) paper to suggest a "substantial decline".

Significantly, Morton and Baynes (1985) make no mention of historical abundance of Northern Quoll based on evidence from owl deposits. Rather, the theme of their paper addresses changes in overall species richness of rodents and polyprotodont marsupials since European settlement. Morton and Baynes (1985) do state that "... analysis, of skeletal remains from the surfaces of cave deposits at 15 sites in the western arid zone shows that species richness of rodents and polyprotodont marsupials has declined to 44% and 41% of the pre-European numbers." It is also highly improbable that any measure of abundance for any mammal species could be derived from reviewing the contents of owl deposits. In summary, there appears to be little if any support for the statement regarding the decline of the Northern Quoll in the Pilbara contained in the Action Plan and thence paraphrased on the DEWHA website (DEWHA 2009). It appears that this have been derived from, and perpetuated, by a series of mis-citations rather than any real evidence or population data from the Pilbara region.

The State Schedule 1 listing for the Northern Quoll is based on the species Kimberley populations, which are at risk due to the predicted invasion of the Cane Toad (Section 5.1). Given the lack of long-term studies in the Pilbara region, and that current predictions do not show Cane Toads invading the inland Pilbara, a more appropriate listing for the *Dasyurus hallucatus* specific to the Pilbara region would be "data deficient".

Ecological refugia is a concept outlined by Morton et al. (1995), which recognises areas in which a suite of species persists over short periods when surrounding habitat becomes unsuitable due to adverse climatic or ecological conditions. There is the potential for the Northern Quoll's core habitat of rocky hills and gorges to act as refugia in the event that the Cane Toad *Bufo marinus* does encroach into the inland Pilbara.

5.3 Hope Downs IV Project

In the case of the Hope Downs IV project, there also appears to be very little to suggest the Northern Quoll even occurs in the area. Field fauna surveys completed for the proposal did not record any *D. hallucatus*. Ninox (2008) completed a total of 1,420 Elliot trap nights in the project area without recording any evidence of the species (Section 4.4). The review completed in this document shows that the closest record of this species from the accumulated trapping work of the past decades is more than 100 km to the north (Section 4.1). There has also been considerable survey effort invested in the Newman locality over several surveys and no *D. hallucatus* have been recorded (Section 4.4). Finally, the Land Systems present at Hope Downs were reviewed to assess broad habitat suitability. Those present include the Table, Spearhole, Wannamunna, Newman, Boolgeeda, Rocklea and Egerton Land Systems. None of these are amongst the six Land Systems identified by this study that account for the majority of all Quoll records from core habitat for the species in the Pilbara region (Section 4.3).

Significant national-scale threats to the Northern Quoll are related to landscape level effects such as the spread of the Cane Toad and inappropriate burning regimes. Localised, generally small-scale impacts (such as clearing and occasional collisions with vehicles) associated with mining operations are not the major contributing factors to the species declining status at the Australian scale. Clearly, mining operations can contribute to some of these landscape factors at local

scale, for example by increasing feral animal abundance around camps or increasing fire risk, but these are likely to be short-term, localised and able to be effectively managed as part of project environmental commitments.

It appears, that the only reason the species been raised at all is due to its inclusion on the output from the EPBC Act Protected Matters search tool. This is more likely to be a function of the poor resolution of the data underlying the search tool than any real, evidence-based expectation that the species is present at Hope Downs IV.

Under the EPBC Act 1999, an action requires referral to the Federal Environment Minister if it is deemed likely to have a significant impact (as defined) on a matter of National Environmental Significance (in this case a listed threatened species: the Northern Quoll *Dasyurus hallucatus*). Correspondence from DEWHA to Hamersley HMS regarding the determination of a Controlled Action states: "...the proposed action is likely to have a significant impact because it involves an overall disturbance footprint of 6 215 ha that has the potential to provide important habitat for the listed endangered *Dasyurus hallucatus* (Northern Quoll)." There is little if any evidence to support this conclusion based on the review carried out in this document, as:

- the core habitats for the species in the Pilbara bioregion are not present at Hope Downs IV;
- systematic Elliot trap effort over several phases failed to record the species; and
- the nearest confirmed record is over 100 km from the project area.

Given the above findings, it appears very unlikely that the action would result in a significant impact to the Northern Quoll and a reconsideration of the decision to treat this project as a Controlled Action is justified.

6.0 References

- Abbott, I. and Burbidge, A.A. (1995). The occurrence of mammal species on the islands of Australia: a summary of existing knowledge. *CALM Science* 1: 259-324.
- Beard, J.S. (1975). Pilbara. Explanatory Notes and Map Sheet 5, 1:1 000 000 series. Vegetation Survey of Western Australia. University of Western Australia Press: Nedlands.
- Biota Environmental Sciences (2006). Mesa A Southern Transport Corridor Vertebrate Fauna Survey. Unpublished report prepared for Robe River Iron Associates, Perth.
- Biota Environmental Sciences and How, R.A. (2005). Northern Quoll *Dasyurus hallucatus* Populations of the Robe River Valley. Unpublished report for Robe River Iron Associates, Perth.
- Braithwaite, R. and Griffiths, A.D. (1994). Demographic variation and range contraction in the northern quoll, *Dasyurus hallucatus* (Marsupialia: Dasyuridae). *Wildlife Research* 21: 203-217.
- Burbidge A.A. and McKenzie, N.L. Eds. (1978). The Islands of the North-west Kimberley. *Wildlife Research Bulletin of Western Australia*. No 7.
- Burnett, S. (1997). Colonising cane toads cause population declines in native predators: reliable anecdotal information and management implications. *Pacific Conservation Biology* 3: 65-72.
- Christian C.S. and Stewart, G.A. (1953). General report on Survey of Katherine-Darwin region 1946. CSIRO Australian Land Research Series 1. cited in Environmental Protection Authority (2002). Position Statement No. 3: Terrestrial Biological Surveys as an Element of Biodiversity Protection. Environmental Protection Authority, March 2002.
- Department of Environment and Conservation (2009). <http://www.dec.wa.gov.au/news/minister-for-environment/cane-toads-arrive-in-western-australia.html>). Accessed 27th February 2009.
- Department of the Environment, Water, Heritage and the Arts (2009). <http://www.environment.gov.au/biodiversity/threatened/species/dasyurus-hallucatus.html#conservation>. Accessed 29th March 2009.
- Dickman C.R. and Braithwaite, R.W. (1992). Post-mating mortality of males in the Dasyurid Marsupials *Dasyurus* and *Parantechinus*. *Journal of Mammalogy*. 73(1): 143-147.
- Environment Australia. (2000). Revision of the Interim Biogeographic Regionalisation for Australia (IBRA) and development of Version 5.1, Summary Report. Environment Australia, November 2000.
- Estoup, A.A., Beaumont, M., Sennedot, F., Moritz, C. and Cornuet, J.M. (2004). Genetic analysis of complex demographic scenarios: spatially expanding populations of the cane toad, *Bufo marinus*. *Evolution* 58: 2021-2036.
- Halpern Glick Maunsell (2000). Hope Downs Rail Corridors Biological Surveys. Unpublished report for Hope Downs Management Services, Perth.
- HLA – Envirosciences. (2004). An Assessment of the Introduced Cane Toad's (*Bufo marinus* Lineaus) Impacts on the Native Australian Fauna, with Particular Reference to the Eastern Kimberley Region. Prepared for Department of Industry and Resources.
- How, R.A., Dell, J. and Cooper, N.K. (1991). Vertebrate fauna of the Abydos-Woodstock Reserve, northeast Pilbara. *Records of the Western Australian Museum Supplement* 37: 78-125.

- How, R.A., Spencer, P.B.S. and Schmitt, L.H. (unpublished manuscript). Island populations have high conservation value for northern Australia's top marsupial predator ahead of a threatening process. Unpublished manuscript.
- How, R., Schmitt, L., Teale, R. and Cowan, M. (2006) Appraising Vertebrate Diversity On Bonaparte Islands, Kimberley, Western Australia. *Western Australian Naturalist*, Vol 26 Part II.
- May, J.E. and McKenzie, N.L. Eds. (2002). A Biodiversity Audit of Western Australia's Biogeographical Subregions in 2002. Department of Conservation and Land Management.
- Menkhorst P. and Knight F. (2001). A field guide to the mammals of Australia. Oxford University Press, South Melbourne.
- Morton, S.R. and Baynes, A. (1985). Small mammal assemblages in arid Australia: a reappraisal. *Australian Mammalogy* 8: 159-169.
- Morton, S.R., Short, J. and Barker, R.D. (1995). Ecological Refugia for Biological Diversity in Arid and Semi-arid Australia. Department of the Environment, Sport and Territories. Canberra, Australia.
- Oakwood M. (1997). The ecology of the northern quoll, *Dasyurus hallucatus*. PhD thesis, Australian National University.
- Oakwood M. (2000). Reproduction and demography of the northern quoll, *Dasyurus hallucatus*, in the lowland savanna of northern Australia. *Australian Journal of Zoology* 48:519-539.
- Payne P.L., Mitchell, A.A. and Holman, W.F. (1988). An inventory and condition survey of the rangelands in the Ashburton River catchment, Western Australia. Technical Bulletin No.62. Western Australian Department of Agriculture.
- Schmitt, L.H., Bradley, A.J., Kemper, C.M., Kitchener, D.J., Humphreys, W.F. and How, R.A. (1989). Ecology and physiology of the Northern Quoll, *Dasyurus hallucatus*, (Marsupialia: Dasyuridae) at Mitchell Plateau, Kimberley, Western Australia. *Journal of Zoology, London* 217: 539-558.
- Sutherst, R.W., Floyd, R.B. and Maywald, G.F. (1995). The potential geographical distribution of the Cane Toad, *Bufo marinus* L. in Australia. *Conserv. Biol.* 1995; 9: 294-299.
- Urban, M.C., Phillips, B.L., Skelly, D.K. and Shine, R. (2007). The cane toad's (*Chaunus* [*Bufo*] *marinus*) increasing ability to invade Australia is revealed by a dynamically updated range model. *Proc Biol Sci.* 2007 June 7; 272(1616): 1413-1419.
- van Vreeswyk, A.M.E., Payne, A.L., Leighton K.A. and Hennig P. (2004). An inventory and condition survey of the Pilbara region, Western Australia. Department of Agriculture Technical Bulletin No. 92, December 2004.
- Woinarski, J.C.Z., Oakwood, M., Winter, J., Burnett, S., Milne, D., Foster, P., Myles, H. and Holmes, B. (2008). Surviving the toads: patterns of persistence of the northern quoll *Dasyurus hallucatus* in Queensland. Report submitted to the Natural Heritage Trust Strategic Reserve Program, as a component of project 2005/162: Monitoring & Management of Cane Toad Impact in the Northern Territory.

Appendix 1

Scientific and Grey Literature References
for Northern Quoll *Dasyurus hallucatus*
Records and Null Elliott Trapping
Records



- Anstee, S. D. and Associates. (1995). Vertebrate Fauna Survey of the Brockman No. 2 Detrital Project May 1995. Prepared for Hamersley Iron Pty. Ltd.
- Bamford Consulting Ecologists. (2005). Fauna Survey of proposed Iron Ore Mine, Cloud Break. Prepared for Fortescue Metals Group.
- Department of Environment and Conservation. (2008). Pilbara Biological Survey.
- Dunlop, J.N. and Sawle, M. (1980). The small mammals of the Eastern Pilbara and the Hamersley Range National Park. In: Muir, B.G. (1980). A Fauna Survey of the Hamersley Range National Park
- Ecologia Environmental Consultants. (1991). Mesa J Project Consultative Environmental Review: Fauna Assessment Survey, August 1991. Unpublished report prepared for Robe River Iron Associates.
- Ecologia Environmental Consultants. (1992). Nanutarra – Wittenoom Road M29 Tom Price North Project: Biological Survey Report. Prepared for Main Roads Department.
- Ecologia Environmental Consultants. (1995). Orebody 18: Biological Assessment Survey. Prepared for BHP Iron Ore Pty. Ltd.
- Ecologia Environmental Consultants. (1995). Yandi Stage II Iron Ore Project Biological Assessment Survey. Unpublished report prepared for BHP Iron Ore.
- Ecologia Environmental Consultants. (1998). Mt Whaleback Fauna Monitoring Programme: Baseline Sampling 1997 -1998. Prepared for BHP Iron Ore Pty Ltd.
- Ecologia Environmental Consultants. (1998). Weeli Wollie Creek Biological Assessment Survey, April 1998. Prepared for BHP Iron Ore Pty. Ltd.
- Ecologia Environmental Consultants. (1999). Millstream-Chichester Rail Corridor: Vertebrate Fauna Assessment Survey. Prepared for Robe River Mining.
- Environmental Praxis Group. (1980). Vegetation and Vertebrate Fauna Survey of the Ophthalmia Dam Site. Prepared for Mt. Newman Mining Company.
- Halpern Glick Maunsell. (1998). East Pilbara Water Supply Augmentation: Biological Assessment. Prepared for Water Corporation.
- Kendrick, P. (1995). Fauna Survey: Vertebrate Fauna of the Marandoo to Great Northern Highway Road. Prepared for Main Roads, Western Australia.
- Kendrick, P.G. (2007). The Non-volant Vertebrate Fauna of the Burrup Peninsula, Pilbara, Western Australia. In: The Western Australian Naturalist 25: 197-241.
- Ninox Wildlife Consulting. (1985). A Vertebrate Fauna Survey of the Mount Channar Area, near Paraburdoo, Western Australia. Prepared for Hamersley Iron Pty. Ltd.
- Ninox Wildlife Consulting. (1986). Part B2: A Second Seasonal Survey of the Channar Area and a Synthesis of all Vertebrate Data. Prepared for Hamersley Iron Pty. Ltd.
- Ninox Wildlife Consulting. (1992). Report: Marandoo Project Area: Vertebrate Fauna Assessments (1975 - 1991). Prepared for Enviroscan.
- Ninox Wildlife Consulting. (1994). Vertebrate Fauna of the Proposed Junction Deposit Mine and the Central Pilbara Transport Corridor. Prepared for Hamersley Iron Pty. Ltd.
- Ninox Wildlife Consulting. (2008). A Vertebrate Fauna Survey of the Cape Lambert Iron Ore Project Area, near Karratha, Western Australia. Prepared for Cape Lambert Iron Ore Limited.

Read, J. (1998). Vertebrate Fauna of the Nifty Mine Site, Great Sandy Desert, with comments on the impacts of mining and rehabilitation. In: *The Western Australian Naturalist* 22: 1-21.

Tingay, A. and S.R. (1979). Vertebrate Fauna Study of Burrup Peninsula. Prepared for Woodside Petroleum Development, North West Shelf Development Project.

Western Australia 1980, Bulletin No. 1 for the National Parks Authority of Western Australia.