

Call Maria Mann
Mike B.
BBQ
Lolly

30/10/00

Boonderoo Sunny hills AC
0600 At WRC
0730 To Kal.

Refers drinks \$2.40
3 nights

Meals
Filet Pommes
Soybean

Bread
Milk
Eggs Cereal

Butter & C.A.S

Margarine
Cheese
Cold Meats
Tomatoes
Caps.
Cucumber

02/11/02

Site 1: 6309⁴³
655 66⁰²

Coxd. 15.36 15.27
Temp 19.7 16.6
Sal. 8.69 8.58
D₀₂ 61.7 48.4
2.6 m Depth

Coot nests Common

Boenderen 31/10/00

0650 to East Side lake
063 1528 WPT 101
655 6526

Boating # CW. Wind 15 kph. of east
HHCIB 30, 2, 32, 30, (B), 18, 25, 20, 20, 17, 10
Hord. 15, 50, 8, 4 77
PaBD 10, 5, 3 18
Crypt. 20, 10, 10, 10, 10, 5, 5 (B) 106, 4, 26
Skel 10, 2, 2 14
Coot 2, 2, Nest 2 eggs, 2, 10 16
Crnk 1, 2, 1 4
Boast 10, 1, 3, 10, 2, 12, 6, 6 40
PeaD 10, 2 (B), 3, 3, 2 Nest 5, 10, 2 37
SGL 1 1
Swan 2, 1 3
WfHw 5, 2 7
Shov 1 1

2

02/11/02

Site 1: 6309⁴³
655 66⁶²

Coxd. 15.36 15.27

Temp 19.7 16.6

Sal. 8.69 8.58

DO₂ 61.7 48.4

2.6 m Depth

Coot nests Common

3

Boenderen

31/10/00

0650 to East Side lake

063 1528 WPT 101

655 6526

Boating at CW. Wind 15 kph. of east

HHCIB 30, 2, 32, 30, (B), 18, 25, 20, 20, 17, 10

Hard. 15, 50, 8, 4 77

PaBD 10, 5, 3 18

eyl. 20, 10, 10, 10, 10, 5, 5 (B)¹⁰⁶, 4, 6²⁶

Shel 10, 2, 2 14

Coot 2, 2, Nest 2 eggs, 2, 10 16

Crank 1, 2, 1 4

Boast 10, 1, 3, 10, 2, 12, 6, 6 40

PeaD 10, 2 (B), 3, 3, 2 Nest 5, 10, 2³⁷

Siel 1 1

Swan 2, 1 3

Wfhn 5, 2 7

Shov 1 1

Fred Lake is dry & lake bed
heavily regrown with scrub
upstream

① Look into centre revealed. Hand 100
Peak 20
Gull 30

~~Cook nests with eggs numerous~~

② Look into centre

8/5/3

31/10/00 Boondaroo

Boat Survey Darren Grahem ^{HAGB}

Bust swan sled Sarah Adriano

Archer Alan Clarke

Coot. 4, 10, 20, 5, 10, (8), 4, 3, 2, 150 (8), 50 ²⁶⁰

Gull 30¹⁰ B, B, 10, 2, 1, 10, 10, 60, 10, 10, 50, 30, 30, 10 ²⁷³

HAGB. 10 20, 10, 10, 10, 10, 10, 10, 10, 10, 10 ¹⁰

PABD 10, 4, 6, 20, 5, 20, 10, 5, 10, 5 ⁹⁵

Peard 5, 20, 10, 20, 10, 10, 10, 10, 10 ¹¹⁵

sled 2, 1 ³

Choot 1 ¹

Hand 20, 9, 10, 200, 20, 20, 10 ²⁹⁹

Bank 1 ¹

Swan 1, (B) 11, B, 2, 2, B ⁶

Bust 10 ¹⁰

w/An 5, 2 (B) ⁷

shw 4 ⁴

Fred 2 ²

10/17/01 End At Mouth of London Ck ⁸⁹⁴

Cygnets nest beyond membership

Feed 2: a Class 1 chick

Numerous nests of coots well

Creek off sheet

06 25974 6555505

Pontow Creek Dishab

	Top	Bottom
Cond	16.76	16.76
Sal	9.55	9.53
Temp	21.5	21.6
DO ₂	57.4	59.3

0627840 wpt 102

6554429

7

31/10/00 Entrance to Pontow Creek

Fred 2

Cygnets 20, 30, 30, 50, 30, 30, 50, 30, 30, 10, 20, 5, 5

Rabbits 10, 10, 2

Hens 100, 50, 50, 60, 30, 50, 150, 50, 5, 15, 20

Peod 10, 30, 10, 30, 20, 2

Coot 100, 30, 20, 20, 30, 20, 10, 50

Swan 5, 5, 4, 4, 8, 8,

Gbl 1, 3, 1, 3

Wthr 3, 8, 1

Wood 3

Chick 2, 1, 2

MusLSB 1, 8, 3 nests

Coms 1

BPop 1

1147 finish Pontow & back to main lake.

(7159)

15 hrs

Coyote nest beyond vineyard

Dead & 2 Class 1 chicks

Numerous nests of coots with

Creek side shack

06 25 974 6555505
Ponton Creek Dishab

	Top	Bottom
Cond	16.76	16.76
Sal	9.55	9.53
Temp	21.5	21.6
DO ⁺	57.4	59.3

0627840
6554429, WPT 102

(7)

3/10/00 Entrance to Ponton Ck

Fred 2

Cygl 20, 30, 30, 50, 30, 30, 50, 30, 30, 10, 20, 5, 5

Ra 50 10, 10, 2

Hand. 100, 50, 50, 60, 30, 50, 150, 50, 5, 15, 20

Peed 10, 30, 10, 30, 20, 2

Coot 100, 30, 20, 20, 30, 20, 10, 50

Swan 5 B, 4, 4, B, B,

Glol 1, 3, 1, 3

Wren 3, 8, 1

Wood 3

Chst 2, 1, 2

AusLB 1 B, 3 nests

COMS 1

BPop 1

1147 finish Ponton & back to
main lake.

(7159)

1370

8

with three shalloes

Breast 100

Cycl. 50

Sket 10

Sweet Wart 1

BAST feeding in shallow behind island

little weagles

19

Boondaroo

31/10/02

		ADD	
Chest	10 ⁷ 2 9	06	
Cycl	60, 50		4, 20, 20, 20, do do 694
PaBo	10		100, 100, 50, 50, 30, 200, 50, 10
PeAD	10		30, 5, 5, 6, 15, 10, 5 76
SHFS	30		50, 5, 2, 2, 10, 5, 10, 10, 6, 5 105
w/lin	25	(B) 2, 6	33
Hand		100, 100, 100, 50, 50, 100, 10	510
Coat		100, 100, 100, 100, 100, 10, 10	520
SACI		1, 1	2
SILC		1, 1	2
RNAV		3, 3	6
BAST		15	15
Shov		2, 2, 4	8
LIBC		2, 2, 2	6
MUSP		1, 0 ⁷	1
Suki		1	1

Continued →

1338 hrs
1894

(10)

10/1/76

completing

101
 102
 103
 104
 105
 106
 107
 108
 109
 110
 111
 112
 113
 114
 115
 116
 117
 118
 119
 120
 121
 122
 123
 124
 125
 126
 127
 128
 129
 130
 131
 132
 133
 134
 135
 136
 137
 138
 139
 140
 141
 142
 143
 144
 145
 146
 147
 148
 149
 150
 151
 152
 153
 154
 155
 156
 157
 158
 159
 160
 161
 162
 163
 164
 165
 166
 167
 168
 169
 170
 171
 172
 173
 174
 175
 176
 177
 178
 179
 180
 181
 182
 183
 184
 185
 186
 187
 188
 189
 190
 191
 192
 193
 194
 195
 196
 197
 198
 199
 200

← lumber

9/1/76

11/1/76

12:50 lunch break on island
 large shallow pool to west of island
 with flooded sandflats.
 Feeding GAST + GAST, plus
 numerous ducks.

lots orange spiders (Daddy longlegs)
 on samphire (live)
 Intend to walk around lagoon to
 search for waders

REAP 15 mo juvs

(15)

→

WPT 41

Swan Nests on island at 1456

with eggs hatching

RCAP 2000

lots of scrapes

626017

6551210



Lagoons behind island

Con

15.0

15.0

Sol

8.4

8.4

2' D^o

70.2

69.2

Temp

20.3

20.3

Bottom

Top

Boondoco 3d/10/00

13384

Gyfl 50, 10, 50, 20, 50, 10, 5, 5

200

PaBo 10, 4, 1

15

Had 10, 20

30

Coat 50, 150, 50, 50, 20, 30, 10

360

w/tdn 3, 2, 1, 3

9

Gank 1

1

PEAD 10, 10, 4, 5, 10, 2, 5, 4

50

YabDie

Gank 1

1

Shov 7, 2, 4, 1, 1

15

APel 1/

1

Chestnut Teal ♀ ♂ Plus 6 chicks

8

h/PC 1, 1, 1, 8, 5

11

MUSD 1

1

LBC 8 10

10

SHTS 3, 2, 2

3

RCAP 2

2

→ 1533

717

[Faint handwritten notes, possibly bleed-through from the reverse side of the page]

Boondara		30/10/80	
Show	1 flightless	25, 5, 100	32
P.B.O	10, 10, 1, 1	9000	22
Gyck	10, 4, 10, 30, 15, 5	7000	74
P.R.O	00, 10, 10, 5, 2, 2, 6, 5	7000	60
Coat	100, 50, 50, 50	7000	250
<hr/>			
Show.	50, 20, 50, 10	7000	130
P.B.O	20, 5, 10, 20	7000	55
Gyck.	100, 50, 50	7000	000
Hand	300, 50, 200, 100	7000	660
Coat	300, 200, 50, 50, 50 B., 500	7000	1150
Fix D	2, 1, 2, 3	7000	8
P.R.O	200	7000	204
W.K.P.		7000	2035

Turn North 160°

Boonderoo

3p/10/00

WPT 42 Southern end of lake. Total

17	MUSD	2	1	HEAD	100	2246
18	WOOD	1				
19	FRED	10		2	COAL	40
20	CHEST	8		3	POB	5
21	ST			4	READ	20
22	RNAV	0		5	COOL	150
23	BAST	15		6	W/TH	3
24	AUGB	3		7	SHAW	10
25	APAL	1		8	SHAW	328
26	HYBE	21		9	BUOK	
27	LIPC	11 11		10	SWAN	
28	SACI			11	GRANK	64 10
29	SNK)			12	SH/T	
				13	REAP	
				14	BFOP	
				15	SICK	
				16	COMS	

1

	8153	Actual (C/P)	
+	246	Swans	180 180
	680	HHGB	2500 (1500)
	497	Bust	1000 2000
		AUGB	6
	440	SHSL	1500 2000
	<u>5800</u>		
	<u>13953</u>		

1800

Set up Camp

250 off.

East side

B 11/11/60 Boonderoo
 Sig 2
 Gylf 510
 HHCy 377
 Coot 183
 Wofan 33 B.
 PADD 165 B.
 BBD 60
 Gank 4
 Hand 254
 Stov 45
 Muso 12 Pines
 Chest 5
 FRO 1
 Swans 56 b.
 SHEL 75
 Bust 16
 LBC 1
 LBC 6

11/11/60

0530 B'foot
 0630 Set up gear v prepare pots.
 NH 31 07 428
 124 21 918

South 31 11 076
 124 22 076

Swift 31 11 019 daylight paint 13.3m

WPT 42
3107 063
124 23749

1/11/00

Island
South

Comp

North

South Point

1 x 500
Cond. Sal. Turbidity Color

1 x 120
Tot P u/f

1 x 120
Tot Pin Alkal

1 m site
PH
Cond
Sal
Temp

	8.28	8.66	8.05	7.98	7.73
PH 1 m site		8.66			
Cond 500		✓	✓	✓	✓
DO ² 1 m site		✓	✓	✓	✓
10m ^s Top ⁵⁰⁰ 120		✓	✓	✓	✓
Turbidity 500		✓	✓	✓	✓
Tot Pin fil ¹²⁰		✓	✓	✓	✓
Tot P u/f ¹²⁰		✓	✓	✓	✓
8.44 Sel. Top ₁₀₀	8.74 ₁₀₀	8.54	8.50	9.01	
21.2 Temp Top ₁₀₀	20.2	20.1	20.7	21.4	
14.94 Cond Top 4m	15.31	15.09	15.01	15.98	
— Sal Bottom	8.77 ₁₀₀	8.39	8.20 _{4m}	9.31	
— Temp Bottom	20.1	19.8	20.3 _{4m}	20.5	
— Cond Bottom	15.55	14.85	14.59 _{4m}	16.54	
114.0 DO ² Top	112.0	97.8	100.3	76.9	
DO ² Bottom	89.8 %	104.1	100.6	72.5	
0.6 m Depth	0.6 m	4.70	10.9	1.2 m	
— Temp (PM)	20.2	20.1	20.5	21.2	

Calibrated pH meter without
calibration chart.

pH 7 read 6.94

adjusted up to read 7.00.
at 13.2°C

Reads 10.07 in 10.00 buffer
adjusted to 10.00

58.8 mV @ 13.7°C

Calibrated DO² meter in air - OK

Conductivity calibrated on 2.70
standard in lab at 25°C

Fish

Observed numerous large
carp 200-300 mm &
smaller fish 150-200 mm
may be juvenile carp
No smaller fish observed.

Caught 8 Yabbies. May often
be seen on lake bed of varying
sizes. Large in centre of
lake at North.

11/1/60

Sampled at edge of lake on
eastern arm. where road
runs to lake.

Named Camp site
Water samples (CP)
Invertebrates (AC)

0830 on to Northern sites

11/1/00

Boondersoo

North

Sika

0840

at 31 07

418

124 21

9.

Collected all water samples
Golden Pencil seen to 500-600
mm on lake bed.

Large extensive clumps of
chara on bed in excellent health
7 m bars of water to double
salinity from 4.5‰ to 8.5‰
Many dead trees to 6m (total)
now submerged above water
surface.

Very still. Conditions clear sky.
Yabbies still present on bed

5.8m

31 07

535

124 21

669

Ponson Ck

4.1 m deep 31.08 295

124 20 174

3.0

31 08 136

124 19 793 ✓

Barndaroo

4.3 m 0629141 6552863

6.5 0629474 6551757

7.4 0629776 6550950

7.5 629954 6550394

10.9 630474 6549110

~~63050~~

10.85 630532 6548959

9.0 629986 6547867

99 Dept Soutt

8.9 629872 6547196

Huloo Boondaroo

Pomton Creek

W Pt 43

0626 126 6555 232

Narrow creek well submerged dead
trees & logs. Dead trees scattered
in water body. Algae on bed.
lots of caddis flies & water beetles
Wood Gull dead also common
shel. (100) midway along.

11/11/00 Boonaroo
" South " Sample site

Open water body at south site
@ 10.85 depth 10.9
about 150 m west.

Very clear water column
but lake bed not visible

... ..
... .. "South"

... ..
... ..
... ..
... ..
... ..

Boenderman 1/11/80

Telescope Scan from island
off west of "South Island"
sample site.

Chart 2

Signal 10, 2, 2, 2, 6, 2, 10
Lead 6

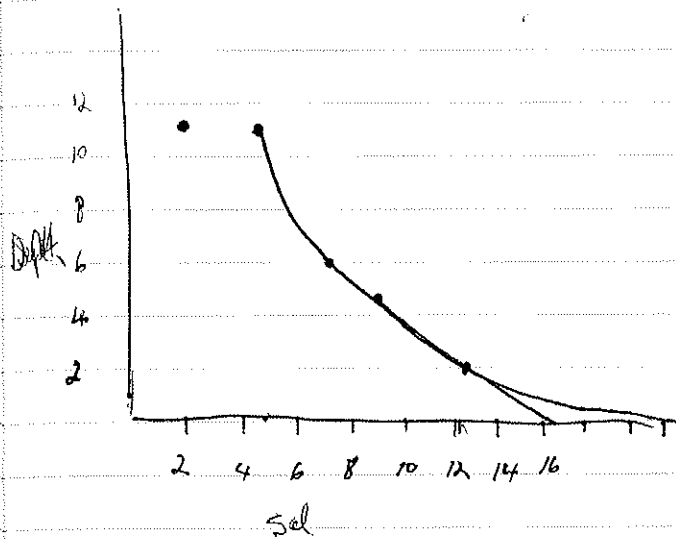
Signal 4 Distraction Display
Burst 2, 3 DD

COOT

BFOF

1500 At boat ramp. food vehicle
+ onto camp
Data entry notes
1600 off

Dassen has 42 species
including bush birds



12-15 $\frac{9}{100}$

Beandaes

2/11/00

0520 B. East Pack up +
715 on the cut off lake.

Much regeneration of lue
on strandline + below
lue. obosa? Sample.

Collected lue regen Plot 19

Plus blue flowering P. 16
shrub to 1.8 m saltbush
like appearance. P 20

From strand line down
the slope low halosarcis
+ succulents

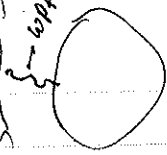
1.5 m red berries
shows strong regen. in low
areas. P 23

Blue flower bromophila?

18-8
Main
Rd.

5.0 W

WPT 47



WPT 47

062 1998
657 483

Panton Ck

TO
CUT OFF

0.0
10 Km

H-3

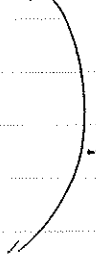
Nth Embayment

5.0 km



camp 98

1.2 km



2.1 km

camp 99

0.000

0.0

WPT 47 Can

WPT 48. South Side mid way

White footed Chats
Welcome Swallow
Tree martin

Coytl. 500 - 1000

Shel. 300

Suave 50

WAGB 100 - 200

REAL.

WPT 49 SE Corner (less 100m)

WPT 50 Eastern end with
shallow marsh to last

about ~~200~~ 300 m wide

WPT 51 Extent of walk

2/11
Cut off lake
Easter end
Dead trees + stumps
Lake bed covered in
thin brown algae
Branches feet covered

Water Sample at WH 52

PH 8.09 28.0 C

At the vehicle 1130
Meet DG + on to trail

44493 / kms

1.57 de.

Std 74.25 704.50

13 Sab Sun

54 Tower 1.

55 90203211

56 90263399

57

58

TR9 0419954541

A

S Miles ~~2571039~~

S 890213085

99

Pam. Park domestic

98341697 Andy

0412083812

Sandy lived 1/11 Jim Jones

Jane Goodall + Mike Miller Peter

Bob Thomas

98340474