

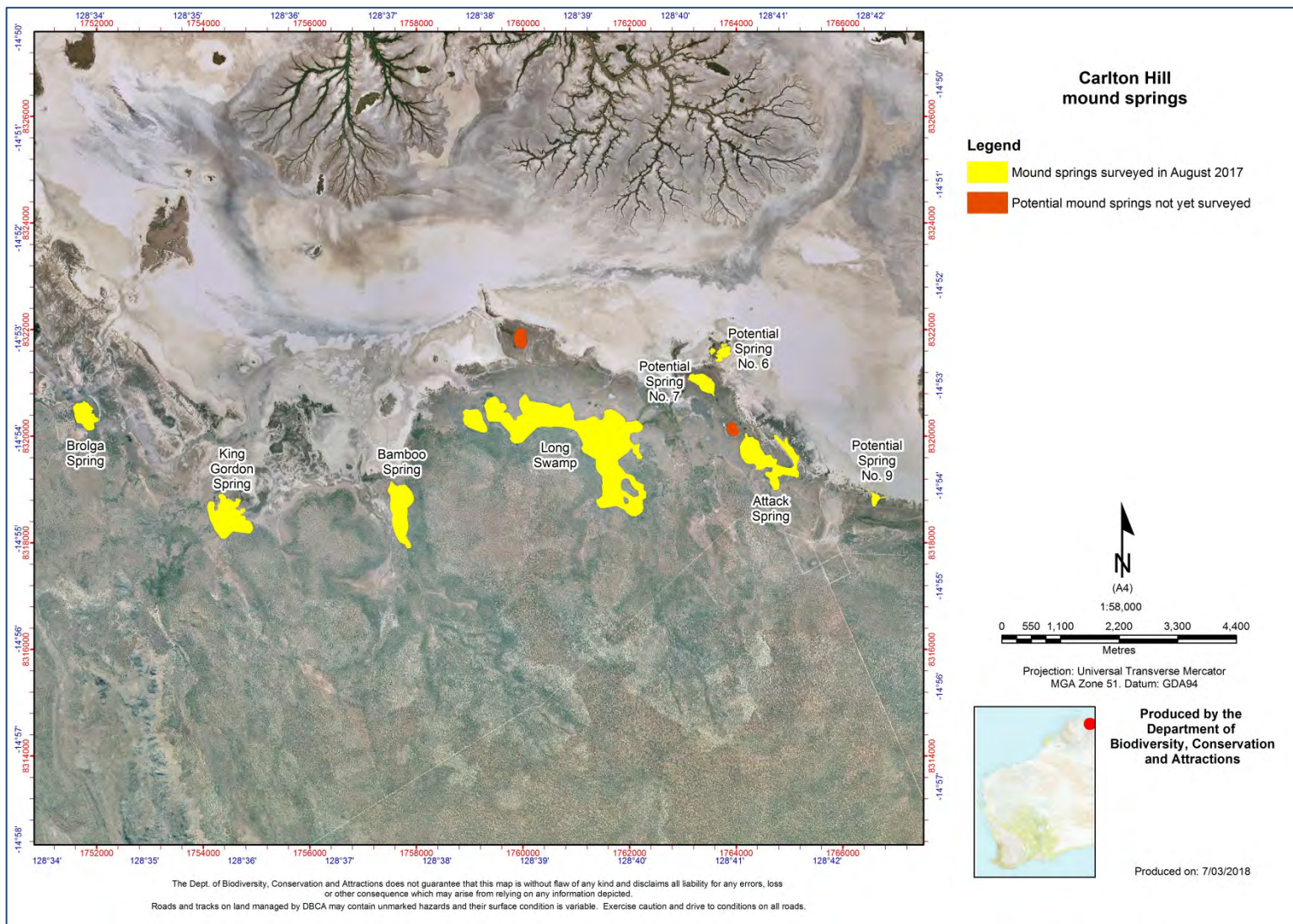
## 8 Mapping and delineation

Adam Turnbull and Michael Coote

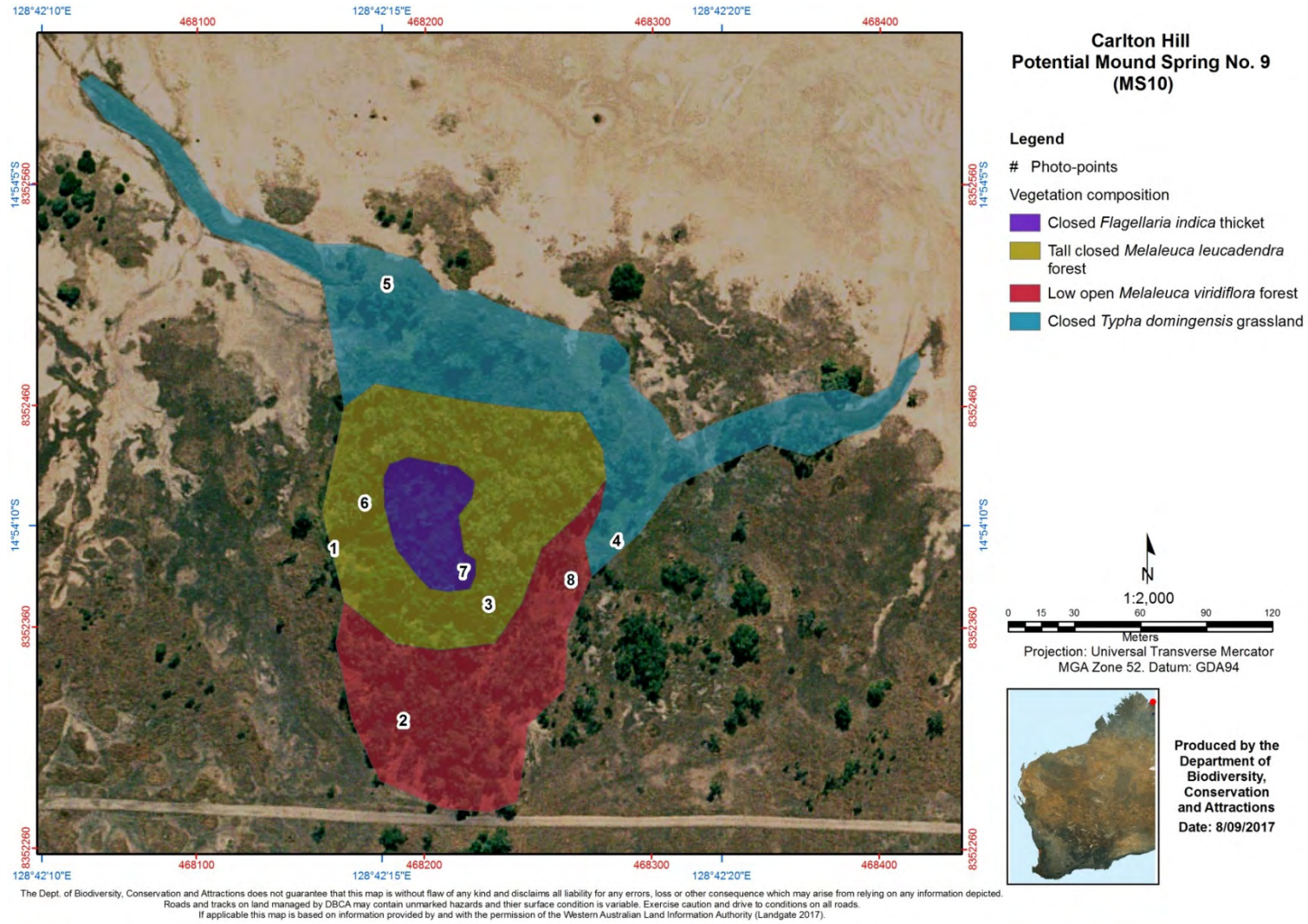
Note: At photo points depicted on the following maps, four photographs facing in the four cardinal directions were taken. They are not reproduced here but are available from Michael Coote and Mike Lyons, DBCA.

The following vegetation maps were based on foot traverses and photo point descriptions. They are necessarily preliminary given the field time available and difficulty in accessing all areas of the various springs.

# Carlton Hill Mound Spring Survey – August 2017



## Potential spring 9 photo-points and vegetation structure



**Potential Spring 9 - Additional notes for vegetation descriptions (see map legend for vegetation unit).**

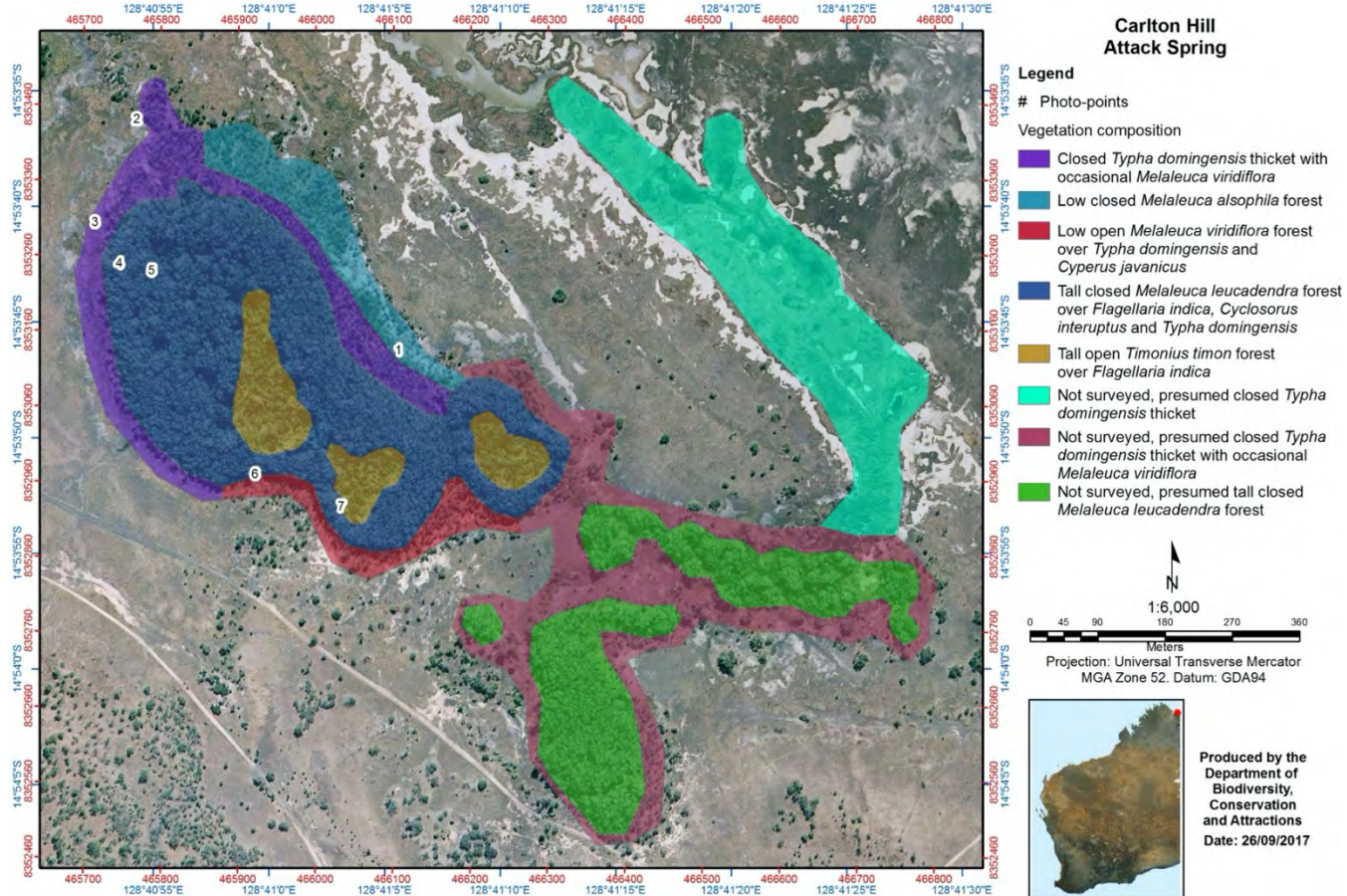
**Closed *Flagellaria indica* thicket** - *Flagellaria indica*.

**Tall closed *Melaleuca leucadendra* forest** – *Melaleuca leucadendra*; over *Flagellaria indica*, *Timonius timon* and *Sesbania formosa* in the midstorey; over *Colocasia esculenta* var. *aquatilis*, *Cyclosorus interruptus* and *Typha domingensis*. Additional taxa at boundary (photopoint 1) included *Acacia neurocarpa*, *Corymbia bella*, *Cyperus conicus*, and *C. javanicus*.

**Low closed *Melaleuca viridiflora* forest** – *Melaleuca viridiflora*, *Pandanus spiralis* and *Timonius timon* over *Acacia neurocarpa* and *A. ampliceps*, *Corymbia bella* over *Cyperus javanicus*, *Melochia corchorifolia*, *Colocasia esculenta*, *Ceratopteris thalictroides*, *Utricularia aurea* and *Marsilea* spp.; Heavy cattle pugging was noted at photopoint 2.

**Closed *Typha domingensis* grassland** – *Melaleuca viridiflora* over *Typha domingensis*.

# Attack Spring photo-points and vegetation structure



The Dept. of Biodiversity, Conservation and Attractions does not guarantee that this map is without flaw of any kind and disclaims all liability for any errors, loss or other consequence which may arise from relying on any information depicted. Roads and tracks on land managed by DBCA may contain unmarked hazards and their surface condition is variable. Exercise caution and drive to conditions on all roads. If applicable this map is based on information provided by and with the permission of the Western Australian Land Information Authority (Landgate 2017).

**Attack Spring – Additional notes for vegetation descriptions (see map legend for vegetation unit).**

**Closed *Typha domingensis* thicket with scattered *Melaleuca viridiflora*** – *Typha domingensis*, *Melaleuca viridiflora*, *Utricularia aurea* and *Acrostichum speciosum* .

**Low closed *Melaleuca alsophila* forest** – *Melaleuca alsophila* , *Cyclosorus interruptus*, *Lemna* spp. Pugging evident.

**Low open *Melaleuca viridiflora* forest over *Typha domingensis* and *Cyperus javanicus*** – *Pandanus spiralis* also present in canopy with scattered *Acacia neurocarpa* and *Corymbia bella*.

**Tall closed *Melaleuca leucadendra* forest over *Flagellaria indica*, *Cyclosorus interruptus* and *Typha domingensis***

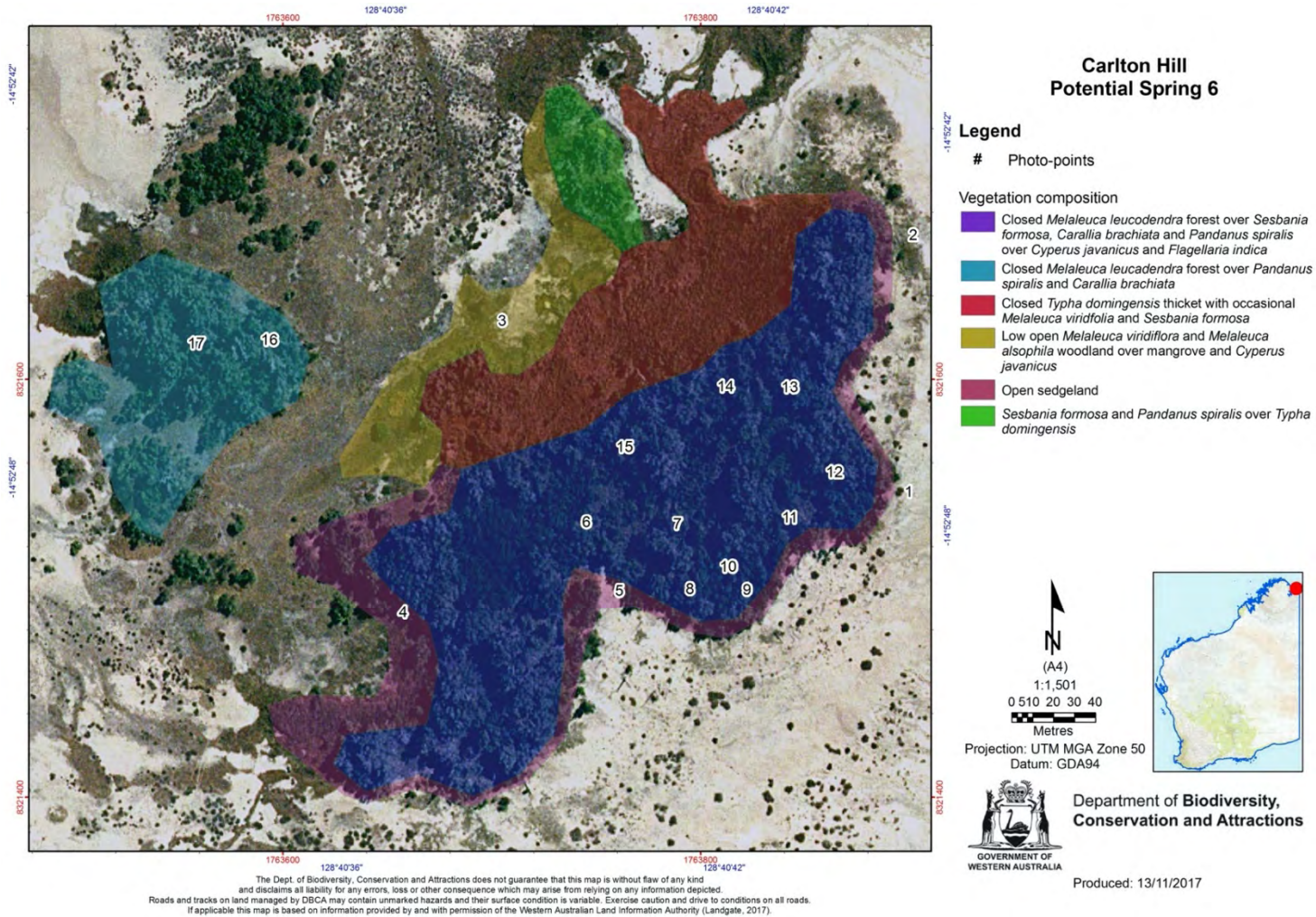
**Tall open *Timonius timon* forest over *Flagellaria indica*.**

**Not surveyed, presumed closed *Typha domingensis* thicket.**

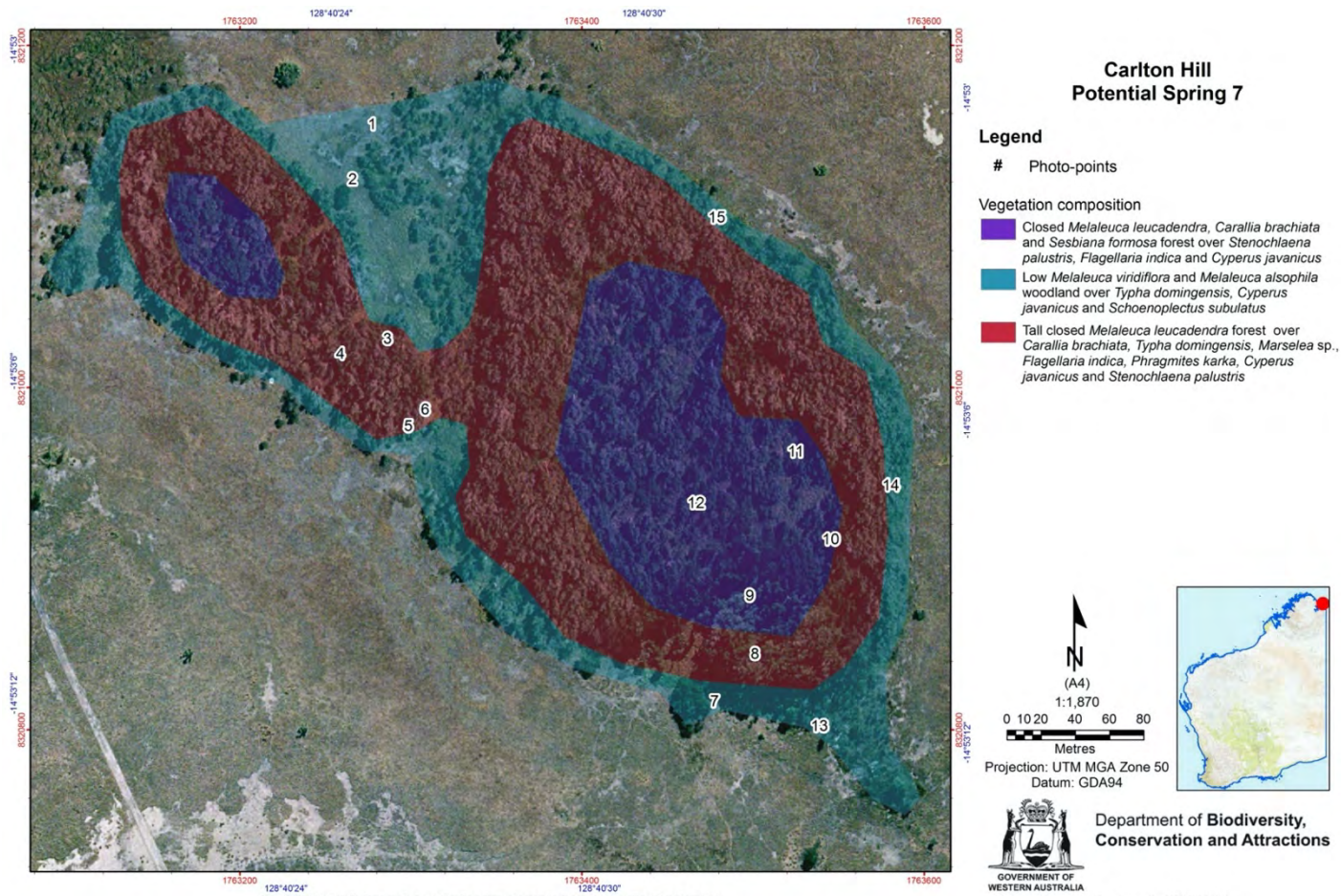
**Not surveyed, presumed closed *Typha domingensis* thicket with occasional *Melaleuca viridiflora*.**

**Not surveyed, presumed tall closed *Melaleuca leucadendra* forest.**

Potential spring no. 6 photo-points and vegetation composition.



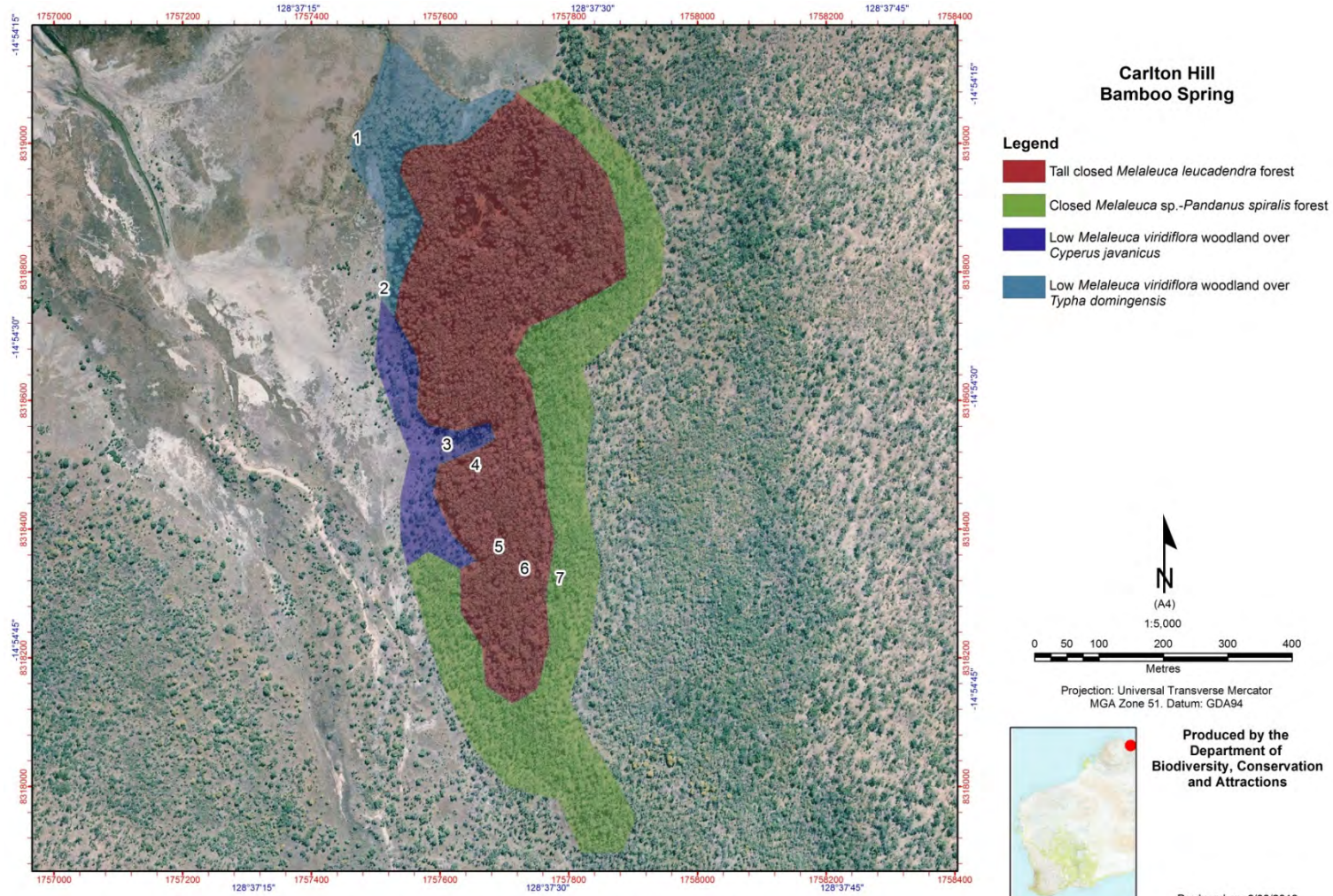
## Potential spring no. 7 photo-points and vegetation composition



The Dept. of Biodiversity, Conservation and Attractions does not guarantee that this map is without flaw of any kind and disclaims all liability for any errors, loss or other consequence which may arise from relying on any information depicted. Roads and tracks on land managed by DBCA may contain unmarked hazards and their surface condition is variable. Exercise caution and drive to conditions on all roads. If applicable this map is based on information provided by and with permission of the Western Australian Land Information Authority (Landgate, 2017).

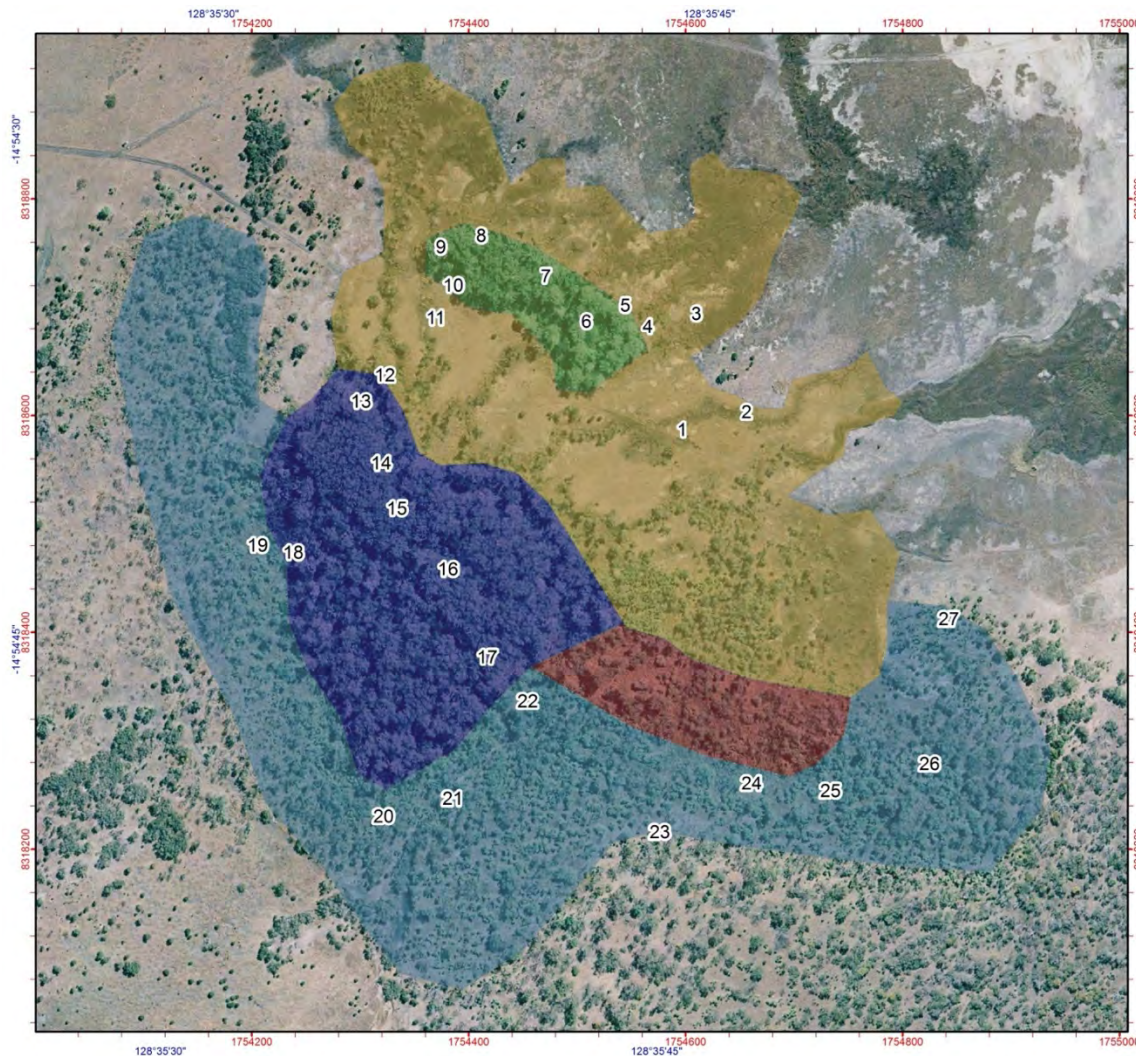


## Bamboo Spring photo-points and vegetation composition



The Dept. of Biodiversity, Conservation and Attractions does not guarantee that this map is without flaw of any kind and disclaims all liability for any errors, loss or other consequence which may arise from relying on any information depicted.  
Roads and tracks on land managed by DBCA may contain unmarked hazards and their surface condition is variable. Exercise caution and drive to conditions on all roads.

# King Gordon Spring photo-points and vegetation composition



## Carlton Hill King Gordon Spring

### Legend

- Open *Melaleuca leucadendra*-Rainforest sp. forest over *Melaleuca viridiflora*-*Pandanus spiralis*
- Closed *Melaleuca leucadendra* forest over *Fimbristylis ferruginea*
- Tall closed *Melaleuca leucadendra*-Rainforest sp. forest over *Pandanus spiralis* over *Typha domingensis*
- Low open *Pandanus spiralis*-*Melaleuca viridiflora* forest with very gradual interface to dryland Eucalypt forest
- Low open *Melaleuca viridiflora* -*Melaleuca alsophila*-*Pandanus spiralis* woodland over *Typha domingensis*



(A4)

1:3,500



Metres

Projection: Universal Transverse Mercator  
MGA Zone 51. Datum: GDA94

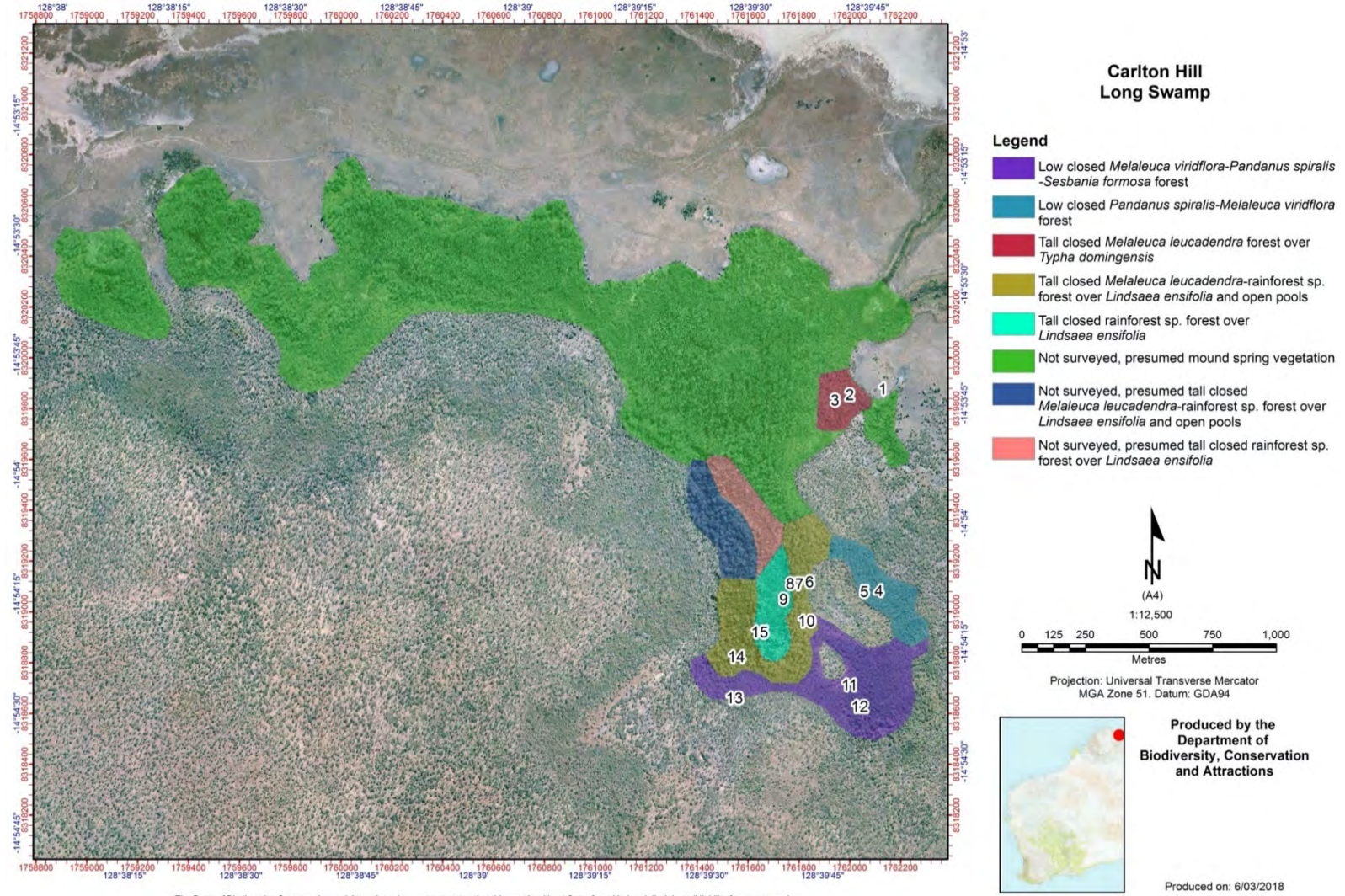


Produced by the  
Department of  
Biodiversity, Conservation  
and Attractions

Produced on: 6/03/2018

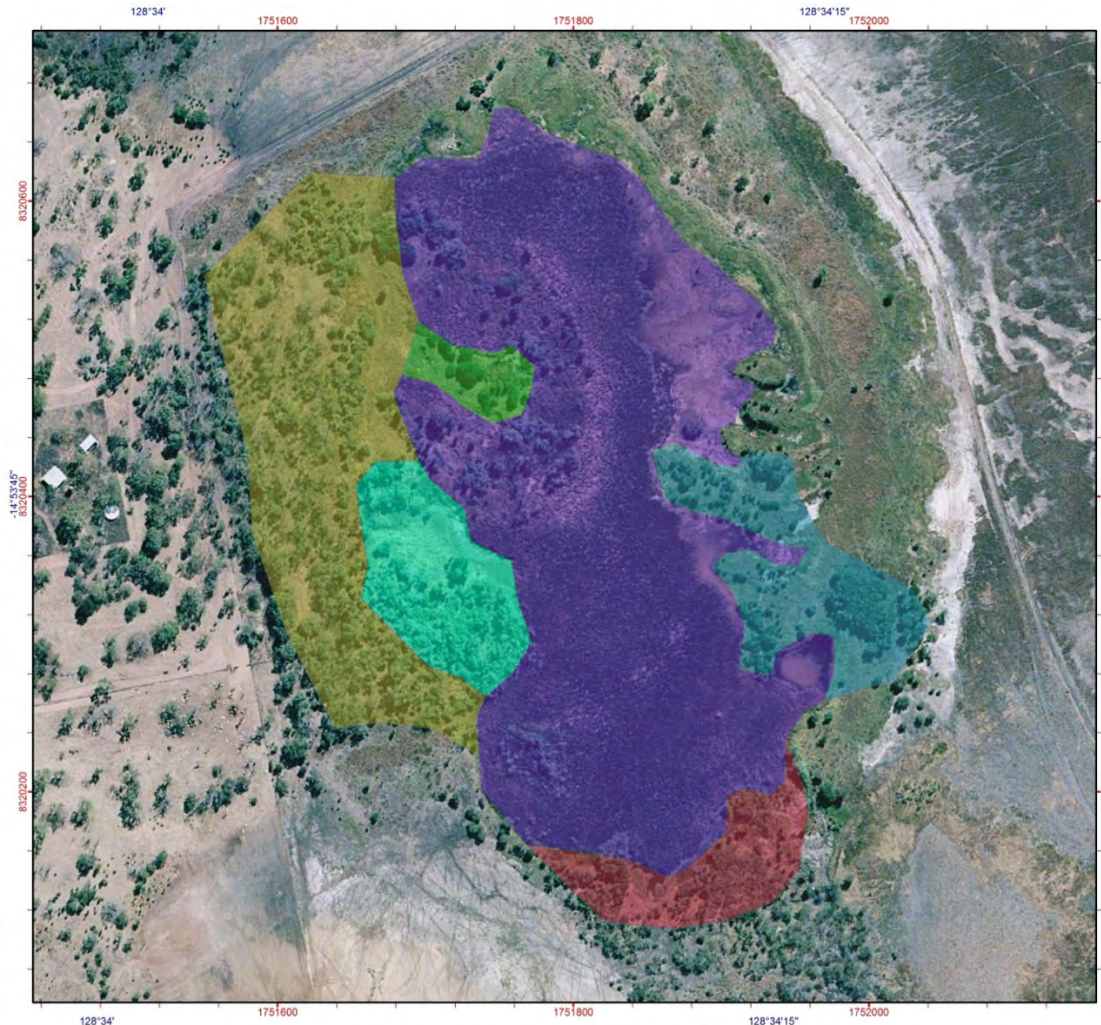
The Dept. of Biodiversity, Conservation and Attractions does not guarantee that this map is without flaw of any kind and disclaims all liability for any errors, loss or other consequence which may arise from relying on any information depicted.  
Roads and tracks on land managed by DBCA may contain unmarked hazards and their surface condition is variable. Exercise caution and drive to conditions on all roads.

# Long Swamp photo-points and vegetation communities



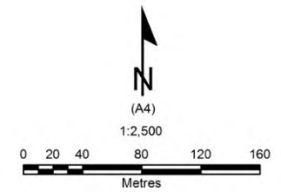
The Dept. of Biodiversity, Conservation and Attractions does not guarantee that this map is without flaw of any kind and disclaims all liability for any errors, loss or other consequence which may arise from relying on any information depicted.  
Roads and tracks on land managed by DBCA may contain unmarked hazards and their surface condition is variable. Exercise caution and drive to conditions on all roads.

Kimberley Mound Spring Survey 2018  
 Brolga Spring vegetation communities



**Carlton Hill  
 Brolga Spring**

- Legend**
- Closed *Typha domingensis* thicket
  - Low *Melaleuca viridiflora* woodland
  - Low open *Melaleuca alsophila* forest
  - Low open *Pandanus spiralis*-*Melaleuca viridiflora* forest
  - Low open *Sesbania formosa*-*Pandanus spiralis*-*Melaleuca viridiflora* forest
  - Clearing with *Hibiscus* sp. tree



Projection: Universal Transverse Mercator  
 MGA Zone 51. Datum: GDA94



**Produced by the  
 Department of  
 Biodiversity, Conservation  
 and Attractions**

Produced on: 6/03/2018

The Dept. of Biodiversity, Conservation and Attractions does not guarantee that this map is without flaw of any kind and disclaims all liability for any errors, loss or other consequence which may arise from relying on any information depicted.  
 Roads and tracks on land managed by DBCA may contain unmarked hazards and their surface condition is variable. Exercise caution and drive to conditions on all roads.