

# LIBRARY

Department of Biodiversity,  
Conservation and Attractions

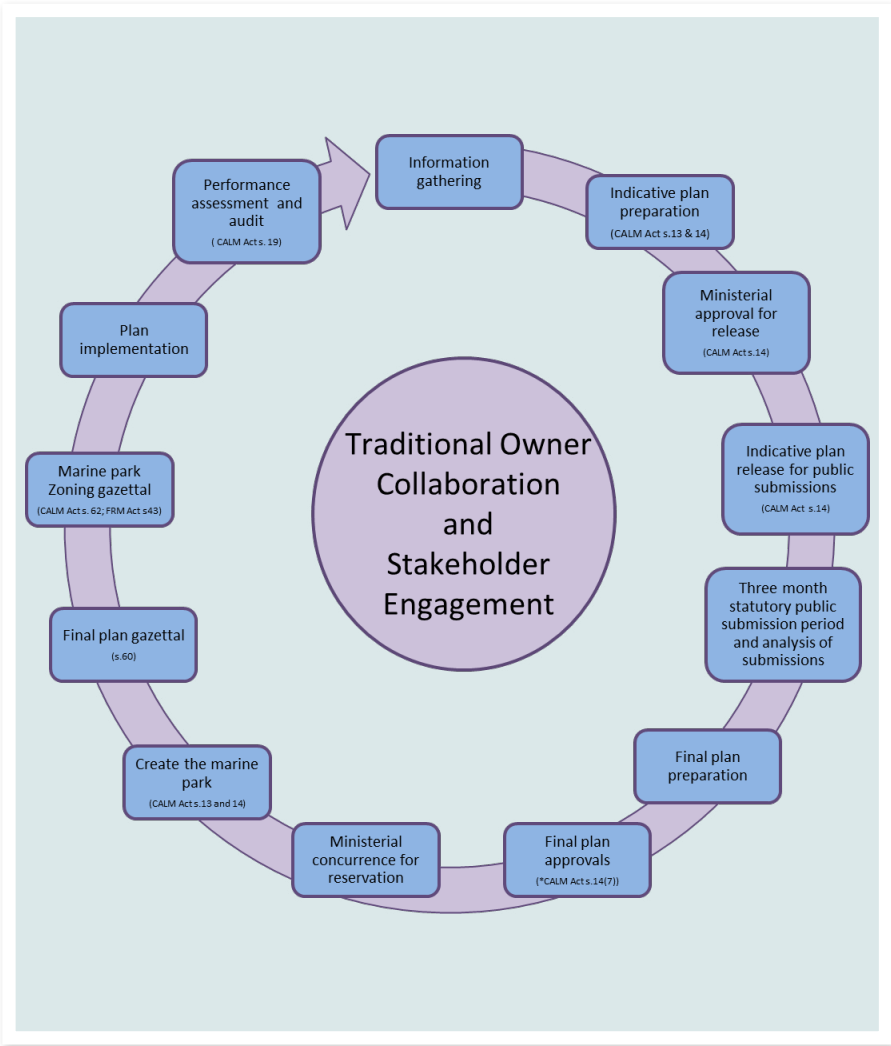
This PDF has been created for digital preservation. It may be used for research but is not suitable for other purposes. It may be superseded by a more current version or just be out-of-date and have no relevance to current situations.

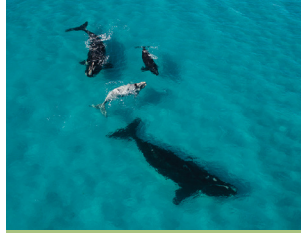


## What is the process to create a new marine reserve in WA?

### What is the process to create a new marine reserve in WA?

Marine reserves in WA are created under the *Conservation and Land Management Act 1984* (CALM Act). In accordance with the CALM Act, an indicative management plan must be prepared and public consultation carried out before a new marine park or reserve can be created. The Department of Biodiversity, Conservation and Attractions (DBCA) prepares the plan on behalf of the Conservation and Parks Commission and the State Government, with input from stakeholders and local communities (for the south coast via advice from a ministerially appointed Community Reference Committee and Sector Advisory Groups). The indicative management plan is released for public comment for a statutory period of at least three months and submissions received are reviewed and assessed to inform the development of the final management plan. To ensure that fishing and mining and petroleum related issues have been adequately addressed during the planning process, agreement between the Minister for Environment, Minister for Fisheries, and Minister for Mines and Petroleum is required to create the marine park or reserve.



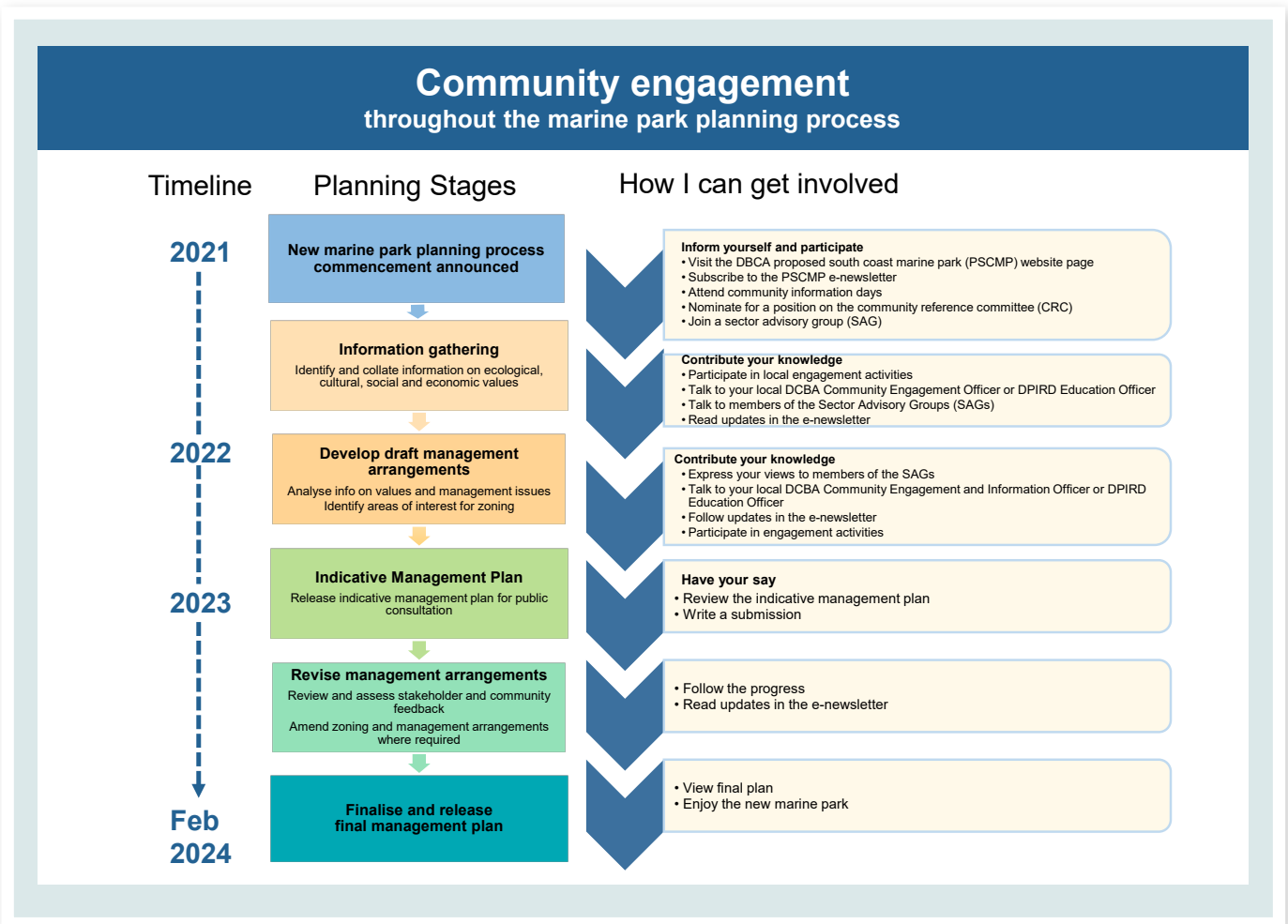


### What is the timeframe for the proposed south coast marine park and how can I get involved?

In line with the State Government’s Plan for Our Parks timeframe, the target date for creation of the proposed south coast marine park is in 2024.

Consultation with stakeholders and local communities regarding the proposed south coast marine park has already begun. DBCA will continue to engage with stakeholders and local communities in regional centres on the south coast throughout the marine park planning process.

A Community Reference Committee will be established, along with Sector Advisory Groups, to ensure all views are heard and considered (see Community Engagement Strategy). Commercial and recreational fishers, conservation, environment and tourism groups, local government, industry and local communities will all be encouraged to provide input during the planning process. A log of community engagement will be maintained and available on the proposed south coast marine park website.



#### More information

##### Department of Biodiversity, Conservation and Attractions

Esperance District  
92 Dempster Street Esperance  
PO Box 234 ESPERANCE 6450  
Phone (08) 9083 2100  
Fax (08) 9071 3657  
Email: pscmp@dbca.wa.gov.au

[dbca.wa.gov.au/south-coast-marine-park](http://dbca.wa.gov.au/south-coast-marine-park)

##### Department of Primary Industries and Regional Development

Esperance Office  
PMB 50 Melijinup Road  
Esperance WA 6450  
Phone: (08) 9083 1111  
Fax: (08) 9083 1100  
Email: [enquiries@agric.wa.gov.au](mailto:enquiries@agric.wa.gov.au)

[dpird.wa.gov.au](http://dpird.wa.gov.au)