


Printed 16/6/2014.

Alan Clarke's Field Notebooks

(INDEX)

(Only pages with notes are numbered)

None of these
have been scanned.

get


1. 1992- 1995 (12-07-1992/19-10-1995)
2. 1995-1996 (06-11-1995/²¹⁻¹¹⁻¹⁹⁹⁶20-02-1996)*
3. 1995-1996 (08-11-1996/11-03-1996)*
4. 1996 (12-04-1996/21-11-1996)*
5. 1996-1997 (09-12-1996/06-08-1997)
6. 1997 (13-08-1997/14-10-1997)
7. 1997-1998 (20-10-97/23-10-1998)
8. 1998 (04-05-1998/04-05-1998)
9. 1998-1999 (08-09-1998/04-02-1999)
10. 1998-1999 (30-09-1998/18-02-1999)
11. 1999 (15-02-1999/08-06-1999)
12. 1999-2000 (27-05-1999/24-02-2000)
13. 1999-2000 (29-06-1999/20-01-2000)
14. 2000 (29-03-2000/17-04-2000 and 27-09-2000)
15. 2000 (26-04-2000/15-08-2000)
16. 2000-2001 (01-05-2000/16-03-2001)
17. 2001-2002 (30-10-2000-19-07-2001)
18. 2000-2001 (06-11-2000/23-05-2001)
19. 2001 (02-04-2001/08-11-2001)
20. 2001-2002 (26-11-2001/11-04-2002)
21. 2002 (07-05-2002/25-05-2002)
22. 2002 (05-07-2002/25-11-2002)

9/8/2014

23. 2002-2003 (11-11-2002/19-09-2003)
24. 2002-2004 (14-10-03/27-11-03) + (09-03-04/17-06-2004)
25. 2004 (03-08-2004/29-09-2004)
26. 2004-2006 (08-11-2004/19-11-2004) +
(13-03-2006/09-11-2006)
27. 2005-2006 (05-07-2005/10-02-06)
28. 2006-2007 (14-11-2006/07-11-2007)
29. 2008 (05-03-2008/09-11-2008)
30. 2009 (11-03-2009/04-08-2009)

*Alan to worked out the pages' order.

26/4/00 - 8/00

LAKESIDE NEWS
\$ 2.20



9 31672 000298

①

Swire propellers.

Maine ways

92449255

~~Martin's boat sales
Saco~~

Skinner's Marine 94341822

Fax 94341826

(2)

26/4/00

depart Carrombine 6.30 am
for Manjimup, buy feed

meet Allan Gregory 11.50

travell to Mincup lake
water depth 1.73 =

Divey in No. 1 transect north of
recreation area.

install 5m gauge 20m out from
2m datum in line with 2nd gauge
new gauge reads 1.59 at lake
bed??

gauge needs about 2m
removed in 2 no transect on
south side of lake.

put up blue flagging tape
on side of track. To mark
entrance.

(3)

(4)

26/4/00

Travel to Madryge lake
 and site to traverse lake - thick
 with Smeas more quite well.
 deposit point southern end
 and western side way Sme

Location deposit area. 0.9-0.95
 2m gauge installed near water
 edge. Lake depth 0.95.

gauge has 2 plates 1m + 2m.
 Lake station installed north 3m
 of largest tree near shore.
 Stake 10m with no plate in big
 tree. Lake height?

Smith. 6.35pm.

Travel to rocky gully
 across and north.

square Allen Gregory
 810 for camping ground
 Oregon.

same Allen Gregory
 across + north of rocky gully.
 828 + Crawford and Sheer.

(5)

Proctor Gully 27/4

depart 7.30

Measure water depth from
gauge 0.58 m

Traverse 1 [Y1] a line joining

10 m south of depth gauge
and Public works station

running from edge of road to
open water near along edge
of (southern) lake veg. plot.

[Y2] 2nd traverse is on

southern side of lake ~~400m~~

along road from PWD station

sign and 60 paces in from road
at 36° to open water

9 paces and 21° from old line
dead Man's.

(6)

27/4/00

(7)

Travel to Lake Meir

[M1] transect start of transect
30m in from Road. 1.1m from
on sketch / main highway.

depth on Monday at
Lake Meir 17th/4
0.56m

[M2] pipe gauge in bottom
/ southern end of lake
Transect changes being half
way along on sketch.

North Piercing 0.66m

I used droppers and
star irons for surveyed points
more droppers need to be
installed along transect,
points marked in sand they
are between droppers and
star irons.

* droppers will need to be
placed at survey points
on other transect using
compass and tape at a
future date.

8

Red lake

27/4/00

datum not found sealed in
 area covered by bushes. 3 x min
 15 min. could I not find?
 assumed to mark on gauge in
 1m ground safe, possibility
 that gauge 1 has sunk No. 2 & 3
 are similar.

wood board
 poor, unusable
 No. 1 assumed good 1m both gauges
 No. 2 1.952 2m gauge good
 No. 3 2.955 3m gauge good

lake depth 0.39 m
 travel to Manginay buy drill
 bits from TRUS VALVES hardware
 travel to Pemberton
 dinner meal at Pub
 finish 6:00 pm

9

28/4/00

depart Gloucester motel
8.00am

Travel to Sargyn Lake.

Lake Wilson large depth

3.16m

(10)

28/4/00

Lake Sagar

Calcu datum found assumed 3m
↑
Two number plates used [1] and prepared in by hand [2]
11.012 top of gauge. ↑
unreadable

depth of lake 10m assumed 98
replaced old gauge with new
plastic plate on old angle.
Knocked angle 10cm further into
the ground to secure.

new plate was reattached on to
angle iron
connected to existing (1987) Dola
datum.

need to add 3m for gauge
height at Sagar.
Frank to Broad water

(11)

came out from Super Lake
via west access road
on to Street Hwy
quicker to go back west
onto Nammy's road,
too much water for
small access.

(12)

28/4/00

Broadwater

Station not found, probably not
installed?

4 mm difference between old gauges + 2.

angle lines (near)

No. 2 South site 150m down to 1m.

No. 1 angle 1.644

gauge on fence assumed correct
used to survey in 2 new
gauges.

No. 1 on edge of lake paper

top of gauge plate 1.5m

No. 2 gauge further in meadow

top of gauge 1m.

D. 13m with R.M.'s

installed on fence line remaining

(13)

shavers
oam canywr
tir dad Co

phib Home phone No.
97566330

(14)

new
water depth on gauge $L = 0.09$
cut into the lake BM post in
near corner of Jones back from
water edge has 50 m.

Allen Gregory and Mike
departed for Port 5:35 pm
drove to Ship Hotel with
woman and meal.

finish 6:15 pm.

(15)

10

with 5 in above lake 5 mpr
gauge height.

Plants 7:30 am

29/4/00

(16)

density calibration in new TDS 36‰
standard

WP-84 read 34.0‰ in 36‰ STD.

cal. O.K. $K = 1.07$

8.31 am	#1	0.36.7	‰	14.8°C
	.	0.2	36.7	"
		0.4	36.7	"
		0.6	36.7	"
		0.8	36.5	"
		1.0	36.5	"
		1.2	36.4	"
		1.3	36.3	‰
				14.8°C

(17)

29/4/00

#2 0.1 36.7%
 0.2 36.7
 0.4 36.6
 0.5 36.5
 0.6 36.3 % ∞ 15.1%
 15.7% ∞

15.1%

#3 0.1 36.5 % ∞

High flow of water into description

0.2 36.5

0.4 36.5

0.6 36.5

0.8 36.4

1.0 36.4

1.2 36.4

1.3 36.4 % ∞

14.9%

25.

18

Deadwater

29/4/00

#4 0.1 ~~36.4~~ 36.4% 14.2°C
 { 0.2 36.4 " "
 0.4 ~~36.4~~ 36.4 " "
 36.4 0.6 36.4 ~~36.4~~ " "
 0.8 36.4 " "
 1.0 36.4 " "
 1.2 36.4 " "
 1.3 36.3% 14.4°C

#5 0.1 36.0% 14.5°C
 0.2 36.0 " "
 0.4 36.4 " "
 0.6 36.4 14.5°C
 0.8 36.3 14.6°C
 1.0 35.7 14.6°C
 1.2 35.1% 15.5°C

Strong wind 15+ knots.

(19)

Deadwater

29/4/00

#6	0.1	36.6	% ₀₀	14.3	°C
	0.2	36.6	"	"	"
	0.4	36.6	"	"	"
	0.6	36.7	"	14.3	°C
	0.8	36.6	"	"	"
	1.0	36.7	"	14.3	°C
	1.2	36.4	"	14.4	°C
	1.4	36.4	% ₀₀	14.4	°C

#7	0.1	33.1	% ₀₀	14.7	°C
	0.2	"	"	"	"
	0.4	"	"	"	"
	0.6	"	"	"	"
	0.8	"	"	"	"
	1.0	33.1	"	14.7	°C
	1.2	33.1	"	"	"
	1.4	33.5	"	"	"
9.26pm	1.5	36.6	% ₀₀	15.1	°C

20

Worms up 6/2 29/4/00

10.15 am

Worm gates #1

0.1	31.0%	14.2°C
0.2	31.0	"
0.4	31.0	"
0.6	31.0	"
0.7	31.0%	14.2°C

#2

0.1	31.1%	12.8°C
0.2	31.1	"
0.4	31.1	"
0.6	31.1%	12.9°C

Worms up Mexi data log

10.33 am depth on gauge 0.4 m

(21)

Wimmerup est.
#3

29/4/00

0.1	33.1‰	13.5°C
0.2	33.1	13.6°C
0.4	33.1‰	13.7°C

#4

0.1	37.3‰	13.8°C
0.2	37.3	
0.4	37.3‰	13.9°C

#5

0.1	36.4‰	14.0°C
0.2	36.4	14.0°C
0.4	36.4‰	14.0°C

Finish 11.28am

Vosses Estuary 29/4/00

12.20am

#1

0.1	33.5‰	16.1°C
0.2	"	
0.4	"	
0.6	33.7‰	
0.8	33.8‰	16.1°C

~~#2~~

#2

0.1	33.1‰	15.4°C
0.2	32.8	15.5°C
0.23	32.9‰	15.5°C

#3

0.1	33.7‰	14.4°C
0.2	33.7‰	14.4°C
0.4	34.1‰	14.6°C
0.6	34.2‰	14.6°C

23

Vase Estuary

29/4/00

#4

0.1 37.8‰

15.5°C

0.2 38.8‰

16.1°C

#5

0.1 39.5‰

16.3°C

0.17 39.5‰

16.4°C

#6

0.1 41.7‰

18.7°C

#7

0.12 41.8‰

17.2°C

#8

0.06 33.5‰

19.2°C

#9

0.12 4.30‰

18.7°C

5.0
2.0
5.0
2.0

(24)

29/4/00

Recalibrate WP-84 to 2.0 ppK
2.0 ppK standard read 2.10 ppK
cal. = 1.02% O.K.

#10 Ford Rd

0.1 488 ppm 18.0°C
0.2 488
0.35 488 ppm 17.0°C

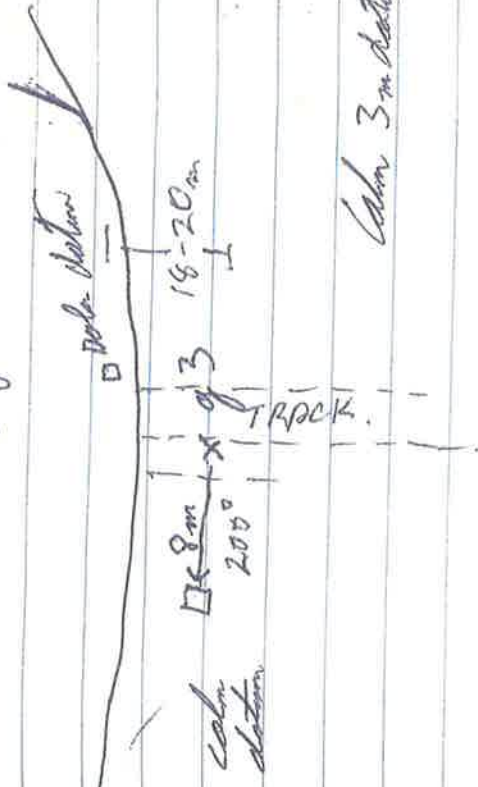
Finish 3:34 pm.

Stephens Hill 7:30
Sundays Train Station
92793996

(26)

x g²

x g¹



9/5/00

(27)

lake logue

Dada BM height ~~1.722~~

1.722

Back site fence side

2.662

0.212

2.450

first angle top

II

4.172

2ND angle top

1.731

3.00 lake height

0.224

1.507

top of angle

4.507

top of angle to 4m = 0.507

487 mm from top of II to 3m

water depth gauge H = 2.59m

(28)

4.30 ~~start~~ Juvvaya Lake 9/5/00

Dala B.M 7.428

Coln datum 3.000

Bench ~~7.428~~ Juvvaya

1.712 coln datum

0.691 angle

0.556 angle 7th step

coln datum

1.576

coln datum 3.0 → 1.021 = 4.021

top of angle ↑

Saw mark ~~3.0~~ 345 mm

about change point being

Top of screw driver

new mark height determination

1.503

coln datum 3.0m

1.450 0.053 new driver 3.053

1.537 screw driver

0.053 coln datum

1.590

30

31

7/5/00

1.194 calm datum 3.0

1.766 - 0.572 Top of datum 2.428

1.601 datum

1.028

1.3

lake water depth 2.35m

top of angle to top of 3m gauge
110m m

new gauge installed 2m at

leaving 300° from old calm

datum refer to plan details

21 piers from track

near dam cut.

new gauge is 4m high

needs a 4' for top of

gauge.

meal Ampol Colby Smith 6.45

32

10/5/00

Grachans
BM height 1.099
Cable station 1.00m

New gauge survey
Back
0.440
Sight
top of angle
1.831

1.518
1.636

depth water 1.15m

1.523
1.635

1.611
1.623

1.686
1.647

1.584
1.592

1.644

0.814 (mean gauge)
10.006 10.778 - 0.772

Back	Face
0.934	1.0m on gauge.
1.544	1.659
1.607	1.645
1.715	1.545
1.713	1.700
1.662	1.140
1.680	1.521
10.805	0.279
	10.039
	0.766

6mm min. dia / adj. to 0.769 top of angle
 1.769 top of angle

(35)

Grubens

10/5/00

gauge installed west of track
near where track enters deep section
near lake proper

gauge is 42 paces 240° long.
cut in open water.

trap is 1-4 m

lake dry 10/5/00

photo taken of gauge

blue flagging tape put on edge of
track & gauge is 240° from flagging

lake bed height of gauge is 0.5 m

Finish 10.40.

Travel to Blue gum.

(36)

Blue gum

10/5/00

depth soundings by waddy in lake
basin @ slope bottom deeper point
in centre of lake at 0.77 m.

1.530

top of 1m mark on gauge
not finished ground too
hard.

1st gauge installed (1m) near centre of
lake

2nd gauge at 2m was installed
on tree (dead) near old tall paper
hard. Blue flagging above gauge
ground was too hard to brook
in an angle line. will have to
come back next year and drill
into substratum and then connect in
to the ground. Saw mark on tree.

(37)

sludge
tech screws, driver
tech screws

(38)

to the left of 2nd gauge 40m is
marked with blue flagging tape
determine depth for NW corner
in Sept 2000.

39

10/5/00

40

Hinds

Dragger over old cable station
is 3.62 lake height

1.927
 1.295
 0.632
 $+ 3.62$
 $= 4.252$ Top of angle
 Top of dragger

2nd top of
non angle iron

1.315
 1.954
 0.639

Dragger

1.877

ground to foot 4m

1.569

0.508

+ 3.620

3.928

3rd non dragger

1.236

Top of angle

+ 3.620

4.260 Top of angle

(41)

Finish on Lake 5:30 being rain
Travel to Wangen Hills Hotel
Finish 6:00 pm

Start 7:30 11/5/00

from previous page survey data
4m gauge installed west of
lake entrance track 20 m from track
bearing to gauge from Doka BM is
back for record.

2.305

drop 3.62

1.923 0.382 4 m mark on gauge
+ 3.62 ⇒ 4.002

0.623 1.300

+ 4.002

= 5.302

2.305

0.623 1.682

3.620

(42)

5m gauge installed 19 m up dip
from 4m gauge. 153° bearing.
From lake bottom to 4m gauge 254° 43m

Depth of Lake 11/5/00 0.20m
5.00 pm 10/5/00 0.18m

Doka Bm to 5m gauge 47m 205°
Doka BM to 4m gauge 60m 192°

Travel to Mairsey's Farm.
Fuel at Wangen Hills Hotel.

(43)

gauge is in from a point
50m along track from old
Jesse line heading into the
lake.

(44)

Frazzoo Wetland 11/5/00
open with Peter and Paul about
drainage into small swamp (Mansup)
and Frazzoo. Will discuss with
5m line about monitoring other
upland and surrounding both
leads to relate both gauges.
reference point found in dam
centre 1.35 used level and
8HP basin for more depth
0.87-0.90 very consistent
depths.

installed 2m gauge nearby 1.35
from deeper point in dam
35m from weather ending
dam wall.

top of arch to 2m mark on gauge
344 m

(45)

Start 4.30 (46)

11/5/00

Campion

BM height 2.463

away from gauge

~~Data~~

Data BM 2.463

0.706

1.885

1.774

2.444	2.802
2.480	2.480
0.964	0.322

1.559	1.5
0.927	top of angle
2.480	2.463
3.444	0.964

5	1.499	top of
2.802	-0.322	of

2.463.

-0.322

0.14 ↓ Top of angle
down to 2m mark.

water depth of lake 0.945
gauge is 5m down slope, further
away from old Cath. station on the

(47)

11/5/00

leaving

from line to the date 3M.

old carbon datum hardly recorded
at base, to

sampled at car 5.55

travel to Meridian

finish at 6.50 pm Potts Motel

48

12/5/00

Depart Meridian 7:30

Arbath Lake.

Surveyed depth using 12 point
and 840 basin Lake depth
point in the middle of lake was
1.28 m.

2 m gauge installed west of
parking area. 11 m west 292°
of largest Laricina tree.

top of Dropper near dead tree to
water was 55 mm.

gauge reading 1.28 m.

(49)

Lake Meads

12/5/00

BM height 3.989 m.

back for

1.046 BM 3.989 m

2.008 ground height 3.029

0.882 0.164 top of angle.

1.582 high water mark = 3.453 m

3.989

+ .164

~~3.825~~

4.153 height of top of angle.

4 m gauge installed 15 m on corner

summing as other gauges 1+2

gauge is 2 m MNE from cabin station.

water level at 12/5/00 was 2.91 m

note level of highest water level

summed to level line = 3.453 m

this was probably after excessive

rainfall.

1.582

7.806

1.046

.960

BM 3.989

- .536

= 3.453

3.989

- .960

3.029

1.046

- 0.882

0.164

3.046

.882

0.164

(51)

12/5/00

Spent on Lake Meade

2:30pm

(52)

*

Jim to be included
in the GIS survey group list

GPS surveying info
e-mail IMB about current
status and future variations

Johny cyton (Birded) ornithological
notes etc. for everything
admin.

Ship 97523611

(53)

24/5/00

depart Limerick 7.45 am
Warning gates 10.55 am
3RD bay from south end of gates
has no boards

2ND from north end with penning in to
the estuary
up stream gauge 0.61

down stream gauge 0.06

Varsi Gates

water flowing over most steps
boards

up stream gauge 0.65

down stream estimated 0.11 or 2

54

Goldston north 170KB

55

25/5/00

Vortex gates

upstream gauge measured from

0.30 down to water level = 0.193

193mm

∴ depth is 0.117 m

buoy beginning from upstream pier

Dist. = top of board to water

Buoy 1 395 mm

Buoy 2 410 mm

Buoy 3 385 mm

Buoy 4 340 mm

Buoy 5 430 mm

Buoy 6 390 mm

Buoy 7 385 mm

Buoy 8 035 mm

Buoy 9 420 mm

Buoy 10 395 mm

Buoy 11 405 mm

Buoy 12 480 mm

Buoy 13 425 mm

56

26/5/00

Start 0930

Varegato

#1

0.1 36.7% 14.4°C

0.2 36.7%₀₀

0.4 36.7

0.6 36.7

0.8 36.7

1.0 37.0 14.7°C

1.2 37.0

1.4 37.0

1.6 37.0

1.75 37.0% 14.7°C

#2

0.1 35.0%₀₀ 12.8°C

0.2 35.0%₀₀ 12.9°C

0.35 35.0%₀₀ 13.0°C

57

15/5/00

Varex Estuary

#3

0.1	36.0	%	12.5	°C
0.2	36.0		12.8	°C
0.4	36.0		12.8	°C
0.6	36.0	%	13.0	°C

#4

0.1	35.0	%	14.0	°C
0.2	35.2		14.4	°C
0.38	35.3	%	14.8	°C

#5

0.1	36.3	%	13.1	°C
0.2	36.3		13.1	°C
0.38	36.3	%	13.1	°C

(58)

Calibration on Blank of Sol

36 ppm K = 34.2 ppm K
Cal O.K. K = 1.14%

Calibration

Z ppm K = 2.25 ppm K 17.3°C
K = 1.01 Cal. O.K.

(59)

Voss testimony 25/5/00

#6 0.12 38.1‰ 15.0°C

#7 0.1 38.2‰ 14.8°C
0.2 38.2‰ 14.8°C

#8 0.09 30.4‰ 15°C

#9 0.1 24.2‰ 15.9°C
0.2 24.2‰ 15.9°C

Jan 12.20

#10 1.06 ppm
0.1 530 ppm 15.8°C
0.2 530 ppm
0.3 530 ppm

60

16/5/00

upstream gauge Warrandy, for flood gages
was + 0.06 m at 8.35 am

#1

0.1	35.3%	13.9°C
0.2	"	"
0.4	"	"
0.6	"	"
0.8	"	"
0.94	35.3%	14.0

#2

0.1	35.6%	12.3°C
0.2	"	"
0.4	"	"
0.6	"	"
0.8	35.6%	12.2°C

(61)

Wormerup Gt.

26/5/00

#3

0.1	35.5%	12.9%
0.2	"	"
0.4	"	"
0.58	35.5%	12.9%

#4

0.1	35.5%	13.0°C
0.2	"	"
0.4	"	"
0.56	35.5%	13.3°C

#5

0.1	30.2%	12.9°C
0.2	"	"
0.4	"	"
0.53	30.2%	13.0°C

62

Deadwater 26/5/00

Warning gates #1

0.1	27.8	%	15.3	°C
0.2	"	"	"	"
0.4	"	"	"	"
0.6	"	"	"	"
0.8	"	"	"	"
1.0	"	"	"	"
1.2	"	"	"	"
1.4	27.5	%	14.2	°C

#2

0.1	25.4	%	15.8	°C
0.2	"	"	"	"
0.4	25.4	%	15.5	°C
0.6	"	"	"	"
0.8	25.4	%	15.2	°C

62

Deadwater 26/5/00

#3

0.1	31.8 ‰	15.1 °C
0.2	31.8 ‰	"
0.4	"	"
0.6	"	"
0.8	"	"
1.0	"	"
1.2	"	"
1.5	31.8 ‰	15.1 °C

#4

0.1	23.9 ‰	14.3 °C
0.2	24.2 ‰	"
0.4	25.8 ‰	"
0.6	"	"
0.8	"	"
1.0	25.8 ‰	"
1.2	29.8 ‰	14.2 °C
1.36	30.0 ‰	14.2 °C

64

26/5/00

Deadweight

#5

0.1	28.9‰	13.9°C
0.2	28.9‰	"
0.4	"	"
0.6	"	"
0.8	"	"
1.0	"	"
1.2	"	"
1.3	28.9‰	13.9°C

#6

0.1	26.4‰	13.8
0.2	"	"
0.4	"	"
0.6	"	"
0.8	"	"
1.0	"	"
1.2	"	"
1.4	"	"
1.6	26.3‰	13.8°C

(59)

26/5/00

Deadwater

#7

14.3°C

0.1 25.1‰

0.2 " "

0.4 " "

0.6 " "

0.8 " "

1.0 25.1‰

1.2 25.1‰

1.4 ~~24.9~~ 30.1 14.4°C

Swirl. Lead to Wommsip Guts

12.10pm.

26/5/00 Womersley br. Spud Gates

1.45 pm

operation gauge = + 0.07

cast end

Bay 1 350 mm

Bay 2 370 mm

Bay 3 380 mm

Bay 4 430 mm

Bay 5 380 mm

Bay 6 385 mm

Bay 7 380 mm

Bay 8 365 mm

Bay 9 no boards

Bay 10 360 mm

Bay 11 360 mm

(67)

31/5/00

Depart Woodvale with

Mick Budge at 1.15 pm

arrive island Point 3.00 pm

depart Island Point for Honey

River 3.30 pm depth 0.60

gate to 5.5? at 6.00 pm

too dark, used head

torch to get here.

arrived 7.30 at Forestone

Hotel. usual breakfast

68

1/6/00

7:50 am depart Hotel

repacked car and called out to collect
Lester Hwy

Island point depth gauge 0.52

at 8:45 am

depart for Harvey Drive

Calibration

TPS μ 90
1.94 μ 100 on 2.00 μ R standard

span = 100.9%

O.K.

Island Point depth gauge 0.585

11:55 am.

69

19/6/00

10:00 am

Calibration

WP 84 read 14.5 ppm in 2.00ppk TPS ST

2nd spec standard

WP 84 read 5.44 ppm in 2.00ppk TPS ST

both did not calibrate

calibration failed.

Grid 36%

WP 84 read 35.5 ppk in 360ppk TPS ST.

K=1.10 calibration O.K.

#10

10:40 am

0.1 957

ppm

13.1 °C

0.2 957

ppm

0.4 957

ppm

0.66 957

ppm

13.1 °C

70

Vortex 60s

11:08am

#9 0.1 4.57 ppk 13.3°C

0.2 4.57

0.4 "

0.5 4.57 ppk 13.4°C

#8

11:23am

0.1 6.08 ppk 13.2°C

0.2 6.08

0.35 6.08 ppk 13.3°C

#7

13.3°C

0.1 16.6 ppk

0.2 16.6

0.4 16.6

0.65 16.7 ppk 13.4°C

(71)

VASSALIST 19/6/00

#6

17.0	115/ho
0.1 16.6 ppk	13.3°C
0.2 17.0	"
0.4 17.0	"
0.55 17.0 ppk	13.4°C

#5

12.10/2

0.1 18.3 ppk	13.4°C
0.2 18.3	
0.4 18.3	
0.55 18.3 ppk	13.4°C

#4

0.1 20.6 ppk	13.7°C
0.2 20.6	"
0.4 20.6	"
0.6 20.8	"
0.75 20.8 ppk	13.8°C

72

Vava k... 19/6/00

#3

12.43

0.1	20.3	ppK	13.5	%
0.2	20.3		13.5	%
0.4	20.4		13.5	%
0.6	20.5		13.5	%
0.8	20.6		13.6	
0.96	20.9	ppK	13.7	%

#2

12.55

0.1	22.6	ppK	1-2	%
0.2	22.6		"	
0.4	22.6		"	
0.6	22.8		"	
0.7	22.8	ppK	4.2	%

73

Versé Estuary 19/6/00

1322 hrs
14.3°C

#1

0.1 21.3 ppk

0.2 22.0

0.4 22.5

0.6 22.5

0.8 23.2

1.0 24.5

1.28 25.2 ppk

14.4°C

14.5°C

Versé head gate's upstream

gauge is 0.46m @ 1330hrs

Versé stream gauge

0.705m @ 1340hrs

(74)

(75)

Wannup Est.

20/6/00

up stream gauge no 0.19 @ 1411h.

#1	25.8	ppk	14.0°C
----	------	-----	--------

	0.1	24.0	
--	-----	------	--

	0.2	26.0	
--	-----	------	--

	0.4	26.2	
--	-----	------	--

	0.6	26.5	14.2°C
--	-----	------	--------

	0.8	26.4	
--	-----	------	--

	1.0	27.7	ppk 14.3°C
--	-----	------	------------

#2			1430 hrs
----	--	--	----------

	0.1	16.6	13.9°C
--	-----	------	--------

	0.2	17.1	
--	-----	------	--

	0.4	17.1	
--	-----	------	--

	0.6	17.0	
--	-----	------	--

	0.8	17.0	13.9°C
--	-----	------	--------

WANAI WEST 0.6m @ 2:35 pm

Calibration 20/6/00 1100h

WP84 read 36.5 ppk in 36.0 ppk TPS ST.

calibration O.K.
after calibration

WP84 read 2.20 ppk in 2.0 ppk TPS ST.

(76)

Wamsutter EST. 20/6/00

#3

0.1	18.8	ppK	14.0°C
0.2	18.8		
0.4	18.8		
0.6	18.8		
0.7	18.8	ppK	14.0

#4

			3.05 pm
0.1	23.5	ppK	13.9
0.2	"		
0.4	23.6		
0.6	"		
0.8	23.8	ppK	13.9°C

3.24 #5
pm

0.1	21.7		13.9
0.2	22.0		
0.4	22.2		
0.6	22.2		
0.7	22.2		13.9°C

found RD 20/6/00

4:00 pm

727 ppm @ 36.00 ppt TPS ST.

← calibrated →

at 4:00 pm.

(78)

10.6.80

Dachnath

Start 1220 hrs.

#1

0.1 35.3 ppk 14.6°C

0.2 "

0.4 "

0.6 "

"

"

Prox 35.2 ppk 14.6

→ estimated 1.6m

#2

0.1 35.0 ppk

14.6°C

Bottom

35.0 ppk

14.6°C

→ estimated 1.0m

79

Deadwater 20/6/00

#3

0.1 32.2 ppk 14.2°C

32.2

bottom 32.7 ppk 14.2°C

→ estimated 1.4m

#4

0.1 28.8 ≈ ppk 14.2°C

28.0 ≈ ppk

bottom 27.8 ≈ ppk 14.2°C

→ 1.4m estimated

(80)

Deadwater

20/6/00

#5

0.1 26.0 p.p.k

13.7°C

halfway

24.0 ≈ p.p.k

bottom

26.0 Δ p.p.k

13.7°C

→ estimated 1.6m

#6

0.1 22.2 p.p.k

13.6°C

0.4 22.5

0.6 22.8

0.8 23.2

1.0 23.5

1.2

} ≈ readings
moved around

bottom

~~23.9~~ 23.9 p.p.k

13.6°C

→ estimated 1.6m

(81)

Quadrant 20/6/00

#7

0.1 24.0 \approx 13.6 $^{\circ}$ C

"

"

"

"

bottom 24.0 \approx 13.6 $^{\circ}$ C

\rightarrow estimated 1.6m

Finished 1335 hrs.

82

5/7/00

Pronging 9:30am

plowed choppers along transect

water high at bottom of transect.

rough line 0.480

depth @ gauge 0.425

Tandem Group

depth gauge 2.53

height of water from lake bed at
bottom of gauge to water was
0.855

(83)

5/7/00

Barrow

depth gauge 2.11

T2 bottom of transect

water level lake level to

mean 0.590

T1

~~0.075~~ 0.075 from lake level
to water at end of transect

12.45

Y2 depth of water at

single iron, bottom of transect

was 0.660

Y1 depth at angle iron is

0.570

depth gauge = 0.86

(84)

5/7/00

Ursinus

depth gauge reading 1.82 m

U1 depth at bottom of transect
at angle line is 0.880

U2 depth at bottom of transect
at angle line is 0.930.

MVIR 2

depth at angle line \approx 110 mm

Lab. Main depth gauge 0.70

MVIR 1

water is 130 mm from ~~to~~ water
up to ground 0.0 m transect

(85)

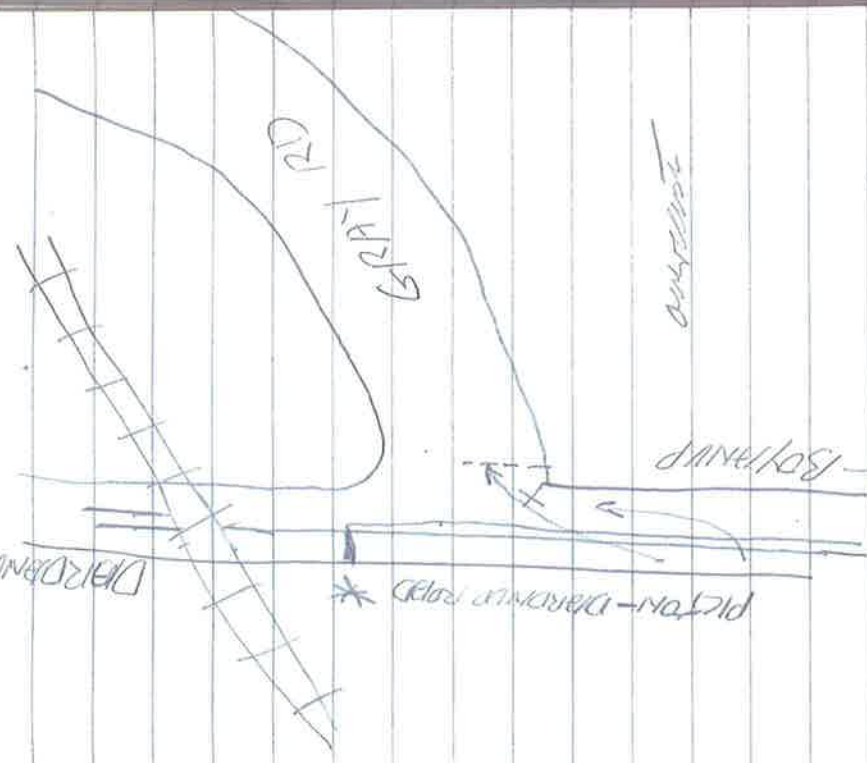
rang Sandalup Police
to inform them of the incident
spoke with 1440 hrs 6/7/00
brnt. BRAINES

Road was wet
80% cloud cover,
my estimate speed 60/km

I had no options open, the
was no when slow to go
with out avoiding him
Driver admitted not using indicator
lights because he did not see the
which regularly and did not brake
near they here. He found the
The brakes those were not used

(86)

Capel Shire. 97272030
grader rego CP 1804
Neil Dickson - driver
wash time 8.45am 6/7/00



They did want to do
when attempting the turn (right)

87

8/8/00

Calibration of WP-84 TPS meter
WP-84 read 2.03ppm in 2.00ppm
TPS standard

Calibration O.K. K=0.99

GPS Lawrence Global NAV 12

11/8/00 1330 hrs

WGS84 384789.

6483403

AGD 66 384649

6483255

AGD 84 384648

6483254

88

14/8/00

WP-84 read 1.96% in 9.30m

7.00% TPS standard

K = 1.01 cal. O.K.

Good RD #10

947m

~~0.1~~ 117 ppm 12.5°C

0.2 1179 "

0.4 1179 "

0.6 1181 ppm 12.4°C

#9

0.1 1297 ppm 13.6°C

0.2 " "

0.4 " "

0.53 1298 ppm 13.5°C

(89)

Vase Got.

14/8/00

#8

10.15^{am}

12.7°C

0.1 1229 ppm

"

0.2 1228

12.7°C

0.28 1227 ppm

#7

10.30

13.6°C

0.1 2.2 ppK

"

0.2 2.2

"

0.4 2.2

13.6°C

0.5 2.2 ppK

#6

10.45

13.7°C

0.1 2.39 ppK

"

0.2 2.39

13.7°C

0.38 2.40 ppK

14/8/00

Vance Gsc.

#5
 11:00^{am}
 12:9^c
 0.1 2.06 ppk
 0.2 "
 0.4 "
 0.64 2.06 ppk
 13.0

11:15^c

14:2^c

#4
 0.1 1.39 ppk
 0.2 "
 0.4 "
 0.6 "
 0.7 1.39 ppk

14:1^c

13:8^c

#3
 13:8^c
 0.1 1.58 ppk
 0.2 1.58
 0.4 "
 0.6 "
 0.88 1.59 ppk

13:8^c

(91)

Vase test. 14/8/00
#2 11.40^{am}

0.1	1.74	ppk	14.7°C
0.2	"	"	"
0.4	"	"	"
0.6	"	"	"
0.7	1.75	ppk	14.8

#1	Vase Gates	11.55 ^{am}
0.1	4.16	ppk 14.3°C
0.2	4.38	
0.4	5.07	14.2°C
0.6	5.50	
0.8	6.85	14.5°C
1.0	8.05	14.5°C
1.17	16.0	ppk 14.4°C

uptake gauge 17.03^{pm} 0.335^m

92

Warmup Ex.

14/8/00

#5

12.55

14.2°C

0.1 1.62 ppk

0.2 " "

0.4 " "

0.6 " "

0.75 1.63 ppk 14.1°C

#4

15.1°C

0.1 1.53 ppk

15.0°C

0.2 1.54

0.4 1.55

0.6 1.55

0.83 1.55 ppk 15.0°C

93

Wormeryp Cr. 14/8/00

#3

1320_{h₂O}

0.1 1052 ppm 14.8°C

0.2 "

0.4 "

0.6 1053 14.7

0.8 1076 ppm 14.7°C

#2

1335_{h₂O}

0.1 1172 ppm 15.0°C

0.2 1172 ppm

0.4 1172 ppm

0.6 2.06 ppK 14.1°C

0.8 7.50 ppK 14.5°C

1.1 7.85 ppK 14.4°C

94

Worming 6E

14/8/00

#1

1350 hrs

0.1 1.88 ppK 15.7°C

0.2 5.20 15.5

0.4 9.40 15.3

0.6 12.92 14.8°

0.8 16.9 14.4

1.0 18.3 14.1

1.2 21.7 ppK 14.6°C

spores/gauge 0.37 @ 1400 hrs.

95

Deadwater

14/8/00

#1

1425h0

0.1	12.9	ppK	15.7°C
0.2	13.5		15.5
0.4	14.0		15.4
0.6	31.6		14.7
0.8	31.8		14.7
1.0	32.1		14.6
1.2	32.2		14.5
1.4	32.2		14.5
1.6	32.2		14.5
1.8	32.2		14.5
2.0	32.2	ppK	14.5°C

96

Deadwater

14/8/00

#2

14.35^h

15.3°C

0.1 13.2 ppK

0.2 13.2

0.4 13.2

0.6 13.5

0.8 22.0°C 15.0°C

0.9 ~~23.0~~ 30.7 14.7°C

#3

15.1°C

0.1 13.2 ppK

0.2

0.4 13.5

0.6 13.5

0.8 14.0

1.0 14.9

1.2 15.0 ppK

15.0°C

97

18/4/00

Deadwater

#4

0.1	13.5	ppK	15.5°C
0.2	13.5		
0.4	13.5		15.6°C
0.6	19.0		15.1°C
0.8	23.9		14.8°C
1.0	24.8		14.6°C
1.2	25.8		14.5°C
1.4	26.2	ppK	14.6°C

#5

1500 L ₀			
0.1	13.1	ppK	14.9°C
0.2	"		
0.4	"		
0.6	"		
0.8	14.8		14.7°C
1.0	16.4		14.6°C
1.2	17.1		15.9°C
1.4	17.2	ppK	15.0°C

Deadwater 14/8/00

#6

0.1 12.7 ppk 14.32

0.2 "

0.4 "

0.6 "

0.8 "

1.0 "

1.2 "

1.4 12.7 14.4°C

1.6 13.0 ppk 14.6°C

#7

15 0.2

0.1 13.2 ppk

-0.2 "

0.4 "

0.6 "

0.8 "

1.0 "

14.9°C

1.2 13.2

1.4 13.4 ppk

(99)

15/8/00

Calibration of WP-84

metre read 2.08 ppk in 2.00 ppk TDS standard

K = 0.97 cal. O.K.

AC to do

Sept. and NOV

Take GPS recordings of
BM and gauges.

get 25 wetland maps from
Niel for 80 transects

TUE 22ND 10:00 at

Woodbank to go to

Sandabango.

new computer off, only 1.

rev. pH cal. method
to the N method.

15/8/00 Votte River Concomy

1523^ho top 683 ppm 14.2°C

1.4_n 1.4 ppm

SABINA RIVER

0.1 721 ppm 14.1°C

0.3 721 ppm 14.1°C

ABBIA RIVER

0.1 292 ppm 14.0°C

1.4 292 ppm 14.0°C

LUDLOW RIVER

0.1 252 ppm 13.1

1.2 252 ppm 13.1

(19)

W51V pH 320

pH 7.00 read 7.02 15.1°C

pH 10.02 read 10.02 15.1°C

mem extra 0mV

-56.2 mV/pH

0mV

102

Sperry 921464300
length with 1400
~~1480~~ 1480 by 1570 feet

(163)

IAN
C.

92455676
041444625

PHIL 97566330
0417949522

Burdette office
97521677

SUE ELSCOT 0419354484
097568260

cap Nite

Hansen 45 night

Left 2nd night - gibney
45 3rd night

6410
MADE IN CHINA