

Printed 16/6/2014.

Alan Clarke's Field Notebooks

(INDEX)

(Only pages with notes are numbered)

None of these
have been scanned.

get

1. 1992-1995 (12-07-1992/19-10-1995)
2. 1995-1996 (06-11-1995/²¹⁻¹¹⁻¹⁹⁹⁶~~20-02-1996~~)*
3. 1995-1996 (08-11-1996/11-03-1996)*
4. 1996 (12-04-1996/21-11-1996)*
5. 1996-1997 (09-12-1996/06-08-1997)
6. 1997 (13-08-1997/14-10-1997)
7. 1997-1998 (20-10-97/23-10-1998)
8. 1998 (04-05-1998/04-05-1998)
9. 1998-1999 (08-09-1998/04-02-1999)
10. 1998-1999 (30-09-1998/18-02-1999)
11. 1999 (15-02-1999/08-06-1999)
12. 1999-2000 (27-05-1999/24-02-2000)
13. 1999-2000 (29-06-1999/20-01-2000)
14. 2000 (29-03-2000/17-04-2000 and 27-09-2000)
15. 2000 (26-04-2000/15-08-2000)
16. 2000-2001 (01-05-2000/16-03-2001)
17. 2001-2002 (30-10-2000-19-07-2001)
18. 2000-2001 (06-11-2000/23-05-2001)
19. 2001 (02-04-2001/08-11-2001)
20. 2001-2002 (26-11-2001/11-04-2002)
21. 2002 (07-05-2002/25-05-2002)
22. 2002 (05-07-2002/25-11-2002)

Plus sorting and preliminary IDs of aquatic invertebrates from Muir - Unacup area in 1996 and 1997

GA 1998 (09-11-98/24-11-98)

23. 2002-2003 (11-11-2002/19-09-2003)
24. 2002-2004 (14-10-03/27-11-03) + (09-03-04/17-06-2004)
25. 2004 (03-08-2004/29-09-2004)
26. 2004-2006 (08-11-2004/19-11-2004) +
(13-03-2006/09-11-2006)
27. 2005-2006 (05-07-2005/10-02-06)
28. 2006-2007 (14-11-2006/07-11-2007)
29. 2008 (05-03-2008/09-11-2008)
30. 2009 (11-03-2009/04-08-2009)

*Alan to worked out the pages' order.

10/11 - 10/14

9 3167921000298



\$ 2.05

①

IONIA
93840066

2

same gauges and angles as.

NISSAN KEYS
(attach to vehicle)

Drill bits
long pins
short pins
Hard spooler

Turn off top ends.

gauges needed = 20
angles needed = 10

3

clutch pencils
two gauges + 2
nuts
concent.
VHT milk

1/2
0

(4)

Fort Woodcock 7.30
2/4/01

(5)

Walgynnaing 2/4/01

(6)

11/2
11/2

1.290
680
2.000
0.610
1.390

1.290

1.172

0.120

1.500

- .120

1.380

1.173

0.513

0.613

(7)

Lebe Campion 7/4/01

level run from 2m gauge (No. 1) to angle
iron for new 1m gauge (No. 2).

back forward. (pc 5/01)
10/11 = 0.492
2.0.0.492
1.15.08

0.690

2m top?

1.172

1.5 detail (down)

1.290

top of angle iron

2m - 0.610 = 1.390

- 0.610

1m on
angle

1.173

angle for 2nd gauge

0.513 2m gauge

Lebe head level on No. 2 (1m) =

0.038

trace of water 150m to SE

0.038

side of lake.

left side of lake on

3.30

8

OD 4264 2/4/00^{to} end of day
traveled to White Water

finished at borrowin motel 7:00 pm

start 7:30 am

quailed vehicle

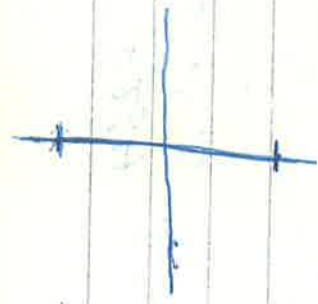
3/4/01

LAKES CROWNIN

from Norseman RD to L. Cronin
track 3.6 km, 1.2 km from
track entrance to lake.
walked out to depth gauge.

depth recorded from Crownin station water
was 105 mm up from 1 m datum = 1.105 m

9



backsite
1.481
CALM Datum 1m

1.245

1.610

1.012

2.863
5.954

0.991

3.248

5.954

= 2.706

5.954

3.248

backsite
1.178
DOLA BM

3.071

~~1.070~~

1.645

1.198

1.433

8.149

→
= 3.446

- 2.703

2ND Pm 2.706

adapted 2.704

DOLA BM Height = 3.7045

10

3/4/01

level run from DOLA BM at back
sight to CALM datum 1m.

CALM 1m DATUM

(11)

3/4/01

Laha Green Doka BM counts

~~WGS 84~~ 420456 7600364
(AUST 6.84) 6608746 6413689

WGS 84 420597 7600
6608896

WGS 85 760029
6413704

AUST 66 759882 39
5
6413566 36

Bennetts Lake 3/4/01

backsite for site

1.883 CALM 2m datum
1.706 DOLA BM 2.177
+ 0.177

1.883

CALM 2m datum
0.571 top of angle iron
+ 1.312 No. 3

looked angle in further

1.883

CALM 2m datum
0.608 top of angle iron
+ 1.275

3m = 0.275 below top of angle iron

1883

check on plate
0.884 water gauge runs further

(13)

star was ~~was~~ west of other SIP
near gauge 2 is 0.540 from
top to water.

SIP is in front of
Pavani area.

1.93

.420

1.350

gauge 2 742.420⁴

63146295

(14)

Bennett's Lake

3/4/01

near 3m gauge is 14m on a bearing
of 330° from the Doha BM.

star was on lake edge was

top of SIP to water was 0.420

lake depth by top of SIP is 2.350m

lake depth from gauge at

edge of wet land (2m gauge)

No. 2 (installed may 1998)

was 1.93

No. 2 gauge (2m) is 28 m
on a bearing of 200° from gauge to
BM (Doha)

Doha BM words

WGS 84

17
742.432

6314529

92

(15)

2.878
 - 1.532
 1.346

(16)

Lake Pommeys 3/4/01

barbante forverte

0.478

Dela BM 2.878

2.010

dragger in water

- 1.532

water height approx

replaced [3] on gauge No. 1 with a

plastic No. 3 [3] removed plastic

tie supports from April install and

put in three stambers bolts.

positioned angle wing level. see above.

Finish at Lake King Taram

6.30 pm

(17)

4/4/01

Start 7.30. Remmup Lake.

Height determination of top of new angle iron for new No. 2 gauge (2m)

back site for site

0.496

DOLA BM 2.878^m

1.179

top of angle iron

-0.683

2.878

-0.683

lake height 2.195^m top of angle

2m is 0.195 below top

of angle.

check of new gauge.

back site for site

1.374

2m mark on No. 2 gauge

0.496

DOLA BM 2.878^m

+0.878

2m mark on gauge is 2.000^m lake height

(18)

Lake Romney 4/4/01

WGS 84 words for No. 2 (2nd) gauge.

744081 E

6317897 N

words for BM. 744124.15

6317871 N

No. 2 gauge is 82m from
the Doh BM on a bearing of 300°

depth at No. 2 gauge was 1.16m.

4/4/01

ATKIN'S TATTLE SWAMP

back site for site

$$\begin{array}{r}
 0.550 \\
 \hline
 2.335 \\
 - 1.785 \\
 \hline
 \end{array}$$

DOLA BM 5.395
 ≈ water height
 5.395
-1.785

≈ water level = 3.61 m

0.546

$$\begin{array}{r}
 1.761 \\
 - 1.205 \\
 \hline
 \end{array}$$

DOLA BM 5.395
 top of angle for 4m gauge
 5.395

$$\begin{array}{r}
 -1.205 \\
 \hline
 4.190
 \end{array}$$

check of 4m gauge.

8131
1.840

$$\begin{array}{r}
 0.546 \\
 \hline
 1.394
 \end{array}$$

stand on 4m gauge,

$$\begin{array}{r}
 \text{BM}(5.395) \quad 4.000 \\
 + 1.394 \\
 \hline
 = 5.394 \checkmark
 \end{array}$$

(20)

ATKINS LARLE 4/4/01
W65 84

BM woods 750024
6330525

6m gauge No. 1 749980
6330528

4m gauge No. 2 749967
6330580

Depth of No. 2 gauge was
3.590m.

(21)

check

0.657 4m mark off 1

1.887

1.171

0.939 3m mark off 2

1.828 - 2.826 = 0.998

824

831

7m

(22)

Coomalbedgyp

4/4/01

back site for site

GAUGE No. 1
DATA BPT 4m mark

0.645

1.880

change point

1.169 1.693 } water edge

1.814 - 3.573 = -1.759 + 4.000

= 2.241

0.813

- 2.693

4.000

= -0.879

-0.879

top of bench = 3.121

check

0.934

1.169

1.890

3m mark on No. 2 gfg

0.662

2.824 - 1.831

4m mark on No. 1 gfg

23

4/4/01
Lamabhidigang
ganga 2 is on a bearing of 355°
and 50 m.

depth at ganga is 2.25m

WGS 84 coords of BM are.

(24)

LARK GORGE

4/4/01

lake depth 0-68

upland 2m plate
and 1m plate,

finish at lake 5-30 pm

finish at exposure 6-30 pm.

(25)

check - 2nd RUN

back site foresite

1st 2nd 1m colln datum

7.550

1.245

1.686

1.584

1.628

0.951

2.654

1.051 DOLA BM

7.518 - 4.881 = ~~2.637~~ 2.637

7.648
5.015
2.633

(26)

HOMICK Resurvey 32128 5/11/01

start before 7.30 am

back site foresite

DOLA BM

1.089

2.843

1.090

1.549

1.507

1.674

1.329

1.582 1m colln datum

5.015 - 7.648 = -2.633 1st RUN

2.637 2nd RUN

$\bar{x} = 2.635$

Colln datum became loose in the ground when checked for stability. Further persons recruited in Datum DOLA BM = 3.635m Lake Height

(27)

19.11.52

Cape Le Grand.

5/4/01

(28)

back-sight foresite

2.523

water level 0.8m

1.122

top of angle line

0.800

+ 1.401

1.401

height heights of top of angle. 2.201m

1.122

2m depth mark 991

0.583

CHERIC

2m mark

1.191

0.692

1.909

Dota BM

1.163

3.100 - 1.855

= 1.245

1.189

Dota BM

1.934

0.643

1.142

2m mark.

1.832 - 3.076

= -1.244

(29)

Cape le Grand 5/4/01

distance between 2m gauge
and DOLA BM is 1.244

DOLA BM LAKE height = 3.244

WGS 84 DOLA BM coords

419068

6240167

road side point out from

BM

419087

6240142

Depth of lake was 0.8m.

7.286
 $.530$
 0.756
 $\overset{5.141}{1.751}$
 $\underline{1.286}$
 465

Wheatfield 5/4/01
 BM = 2.756 m hole height

0.530 Dots BM 2.756
 1.286 2 m mark of No. 1 gauge
~~1.751~~
 1.751 *superslope*
 ≈ -0.465 2.000
 0.465

1.286 $\overset{5.1}{1.480}$ *superslope*
 $\underline{1.307}$
 153

1.286 2 m mark No. 1 gauge
 $\underline{0.212}$ Top of angle for No. 2
 $\underline{0.074}$ 82.

Wheatfield

5/4/01

check 3m gauge (No. 2)

1.286

2m mark gauge 1

0.287

3m mark gauge 2

0.999 difference

depth of No. 1 gauge was 1.235

new 3m gauge (No. 2) is 9m from
the DOLA BM towards the
water just left of a line
joining the 2m gauge and
the BM

finish at 5.45 pm

finish 6.00 pm.

Good

tooth

bread.

tomatoes.

bananas

apples?

the fruit

with

butters

— the nice butter.

(34)

6/4/00

Start 6:30

Travel to Cape de Gend.

helped Geoff Chapman clear

put lines found 4 honey

passoms.

travelling to station lake

and replaced stainers steel

plate with plastic plate

gauge wood board is

deteriorating suggest replacement

is worthy will have to

be replaced in near future.

lake was dry.

did shopping for food

super Value. \$34.00 =

6/4/01

Lake Warden.

~~3m~~ 3m gauge wood level
had no plates on it [3] sign
was all that remained.

Set 2 x 1m plastic plates
depth was 1.78m.

Set 3m plate up against
bottom of 3m sign this
was covered with wear marks
at the joining of the 2m and 3m
plates.

3m gauge

$$\begin{array}{r} 2.572 \\ 0.650 \\ \hline 0.961 - 3.222 \end{array}$$

= -2.261

+ 5.268

= 3.007

2.572

0.961

$$\begin{array}{r} 0.579 \\ 0.961 - 3.151 \end{array}$$

+ -2.19

top of new gauge = 3.078

3m. + ground height is

6/4/01

Yellowing
BM = 5.268

back site for site

0.240

BM 5.268

2.572

0.721

$$\begin{array}{r} 2.055 \\ 1.821 \\ \hline \end{array}$$

ground.

0.961 - 4.393 =

4.657

- 3.432

+ 5.268

= 3.696

= 1.836

5.268 ground height 1.572

water height

0.961 2.572

$$\begin{array}{r} 2.194 \\ \hline \end{array}$$

0.961 - 4.766

= -3.805 + 5.268 = 1.463 m

0.961 2.572

Yellikup 6/4/00

check for 3m gauge.

0.961 2.572

+ 0.657

0.961 3.229

- 2.265 + 5.268 = 3.003

3m gauge height

new 3m gauge is 50 m on a bearing of 270° from new No. 2 gauge (1998)

Bottle height is

0.961 2.572

1.343

0.961 - 3.915

= -2.954 + 5.268 = 2.314

WGS 84 Dala BM coordinates

9 686900

6201359

finish at lake 5:30pm.

(40)

finish at Bremer Bay on 6:30 pm
start at 7:45 on 7/4/01
travel to Pullarung

2.423
- 1.011

1.382

height points
0.870
1.577
Im gauge

1.553 + 1.089
0.464 ^{0.382} top of angk. No. 2 ga

2.423 - 2.041 = 0.382

(41)

7/4/01
height determination of November 2000
depth using string height on
dropper installed by SWS about

0.870 Im marking 1
1.577

1.553
2.423 1.617

3.194 = -0.771 + 1m = 0.229
dropper string height

check of both gauges.
0.844 No. 2 gauge 1m
1.552 ← -0.708
1.550 ← 0.697

0.853 Im mark gauge No. 1
2.394 - 2.405

-0.011
-0.011 ✓

3.194 1.000
2.423

-0.771

re check Pillmarcup 7/4/01

0.853
1.562 -1.291

+580
0.845 0.715
2.413-2.407 +6mm 2.006

+6

No. 1 gauge is on a string of 70" from
gauge No. 2 on 40 m.

lunch 1.30-2.00 pm
travel to Albany 26385

(43)

back out for site

1.002 ^{0.938} Dragger top of.

1.606

1.601

1.606

1.594

0.908 ^{1m gauge plate}
4.197 - 4.120 = +0.877 + 0.938 = 1.015

Zwonen back to dragger - 0.063

(44)

ALBANY 26385 7/4/01

~~MS Plateau~~
~~BM heights 2100~~

BM = 2.465

dragger height determination
horizontal for site

0.819

1.783

1.636

2.388

1.382

1.193 ^{top of dragger SW corner}
3.837 - 5.364 = -1.527 + 2.465 = 0.938

^{top of dragger LH}
string is 0.445 below 0.938
level heights Nov 2000 = 0.493

0.939 adjusted to 0.939
from 2nd run misclose of 2mm.
PC 5/01

45

check back to BM

7/4/01

back site
0.945

1m gauge (1.415 from station)
DADA

1.640

1.576

1.561

1.622

1.015

Dropper 0.938

1.181

4.143 - 4.206 = - 3

0.842

1.864

1.621

1.873

0.930

Data BM 2.465

9.061 - 7.609 = 1.452 - 2.465 = 1.013

height of 1m

No. 3 gauge.

206
143
63

52 = 1.014m Lign No. 3 yg.

46

(47)

Albany 26385

7/4/01

replaced old plate with No. 299
plate plate at original height
1.14 from DOLS Dutton

Finish at late 5.30 pm.

Finish at Mr Barber at
6.30 pm.

(48)

Stone Mt Barber 7.45. 8/4/01

Warning

Dick BM 2nd height 0.899

Buckeye Granite

1.062 Dick BM 0.899

1.704 ground at top - 0.642
= 0.580

top of angle

diff = + 0.882
+ 0.899

1.381 L.H. of top of angle.

1.704

1.062
- 0.642

1.062

- 0.580

0.482

+ 0.899

1.381

1.062

- 0.960

0.102

1.000

- 1.02

0.898

(49)

check.

0.960
- 1.062

= - 0.102

+ 0.000

= 0.898

1.381
1m mark on new spring 2
Dick BM 0.899

8/4/01

Warning
new 1m (No. 2 egg) is 80 m or a
bearing of 56° from the Doh BM.

WGS 84 group 1 words
523589
6199609

group 2 words
523536
6199524

DOLB BM words
523513
6199499

check of 1m new photo gauge
1m mark on new gauge

1.169
0.169

1.919

0.916 3m CALM Datum

3.088 - 1.085 = + 2.003

1m gauge reads 0.997

8/4/01

Lab Memo

replaced 2m gauge photo on gg 2

back with forerite

0.902

3m CALM datum

1.906

2m mark on 2-gg just

- 4mm replaced by photo gg.

0.144

0.598

1.046 - 2.504 = -1.458 + 3.000 = 1.542

top of angle = 1.542

depth was 0.55 at new 1m gauge

53

8/4/01

Memo

WGS 84 words for gg 4 are
533180

6433881

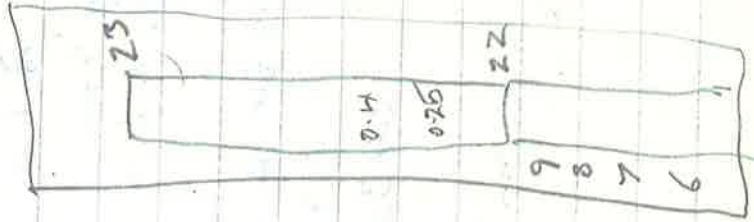
No. 4 gauge is 140° from COLM station
ggs B, 1, 2 are in line 155°
gg 4 is 160° from gg 3
gg 4 is 98 m from gg 2

WGS 84 words for Delta BM are
533102
6433938

(54)

30/4/01

Woodwork workshop for park.
Magellan 2000XL 384791
6483475



(55)

18/6/01

Perrivale lake

top of gauge plates says 23m AMD
lake floor reading 21.57m AMD

both plates are new because
they are plastic plates
assume faded plate replaced
depression at base of gauge
was both was to replace
gauge.

0.4 x 0.25 00 reading can only
be 22.4 AMD in this gauge
because lake floor is 21.57.

November lake level more to

~~22.25~~ 22.25 AMD 2ND gauge

being Top gauge, 1.25 away
the 22.25 AMD.

56

check contractors x 3?

concrete limestone (road base)
plans

check alarm 93472777

(security)

set up 5 alarm Jimmys/ask
police.

order air conditioner for Bred
and machine 3 quotes split
system, Secondary, Fodor-Domen,
and other maintenance

Dorethy paint reuse signs

paint five houses red.

check small utility room gutter.

TUES if fine

700me roundup 700K water
1000e red dye. 56me for 160K
claire

would all weeds present here
and give bushes and shed

roof. plumber from ~~perco~~

London River across 190.

Redyz.

1

Reading

3 quarts for cabinets 93022616.
North shore cabinets tea room
STASON

drop rubbish and fridge off
at Tomoth park. Tim + Andy.

Paints shed.

Tim + Andy to demolish shed.
Stuff to go in bin to

shed contractor to make grass fence

PIA system put back up on
old sheds. Post

Power to shed

\$6500 14m x 6m

60

8/8/

WP-84

2.76ms read 2.68

K = 1.03 CALIBRATION O.K.

April 91 9/8/01 1500hrs
4.06ms.

Calibration 5.20pm 9/8/01

2.76ms read 2.89ms

K = 0.98 calibration O.K.

(61)

13/8/01

Production for Neil Hamilton.
ready up on induction: 9.00-9.30 + 10.20-10.30 + 11.00

Ran 50c Smith through vehicle.

Ford carrier. 11.00-11.30

and trap enquiry
compound alarm light.

Simone plan call. Sept.

62

leave note for Dorothy
and or Keys for Nissan.

S/M's pH meter

OLD PROBE

7.00 pH st. = 6.91 @ 17.5°C

changed to 7.01

8mV

10.00 pH st. = 10.06 @ 18.2°C

changed to 10.02

-57.4 mV/pH

8mV

probe O.K. use as a spare.

NEW PROBE

7.00 pH st. = 7.33 @ 17.4

changed to 7.01

-10mV

10.00 pH st. = 10.07 @ 18.1

changed to 10.02

-58.2 mV/pH

-10mV

(64)

30/8/01

Gilth Road Swamp.

depth of water at gauge 0.32

WRL gauge read 24.335
4

deepest point 0.5m

24.34
.5

STAND/BUP

9/00 45.92 at 2.16

31/8/01 44.93

to of gauge 46m AHD

46m AHD



44.93

65

ANSG 2001 equipment

Colo/Mgr Cunningham

Chris Sparks

arriving TUE 4:00

66

SIMON + DEBRA METCALF

0428 722025 96722025

Sabe Hinds preparing.

(67)

Ming's Picknaps
SUE 1515LOT
97568260

Things to bring next week.
table

table paper

long handle shovel/saw

(68)

3/9/01

leave Cambridge 7:00 am
go to work pick up Betty Joke
travel to L. Hiner

arrive 9:15 am.

depth at No. 2 (1m) gauge was
0.49 m

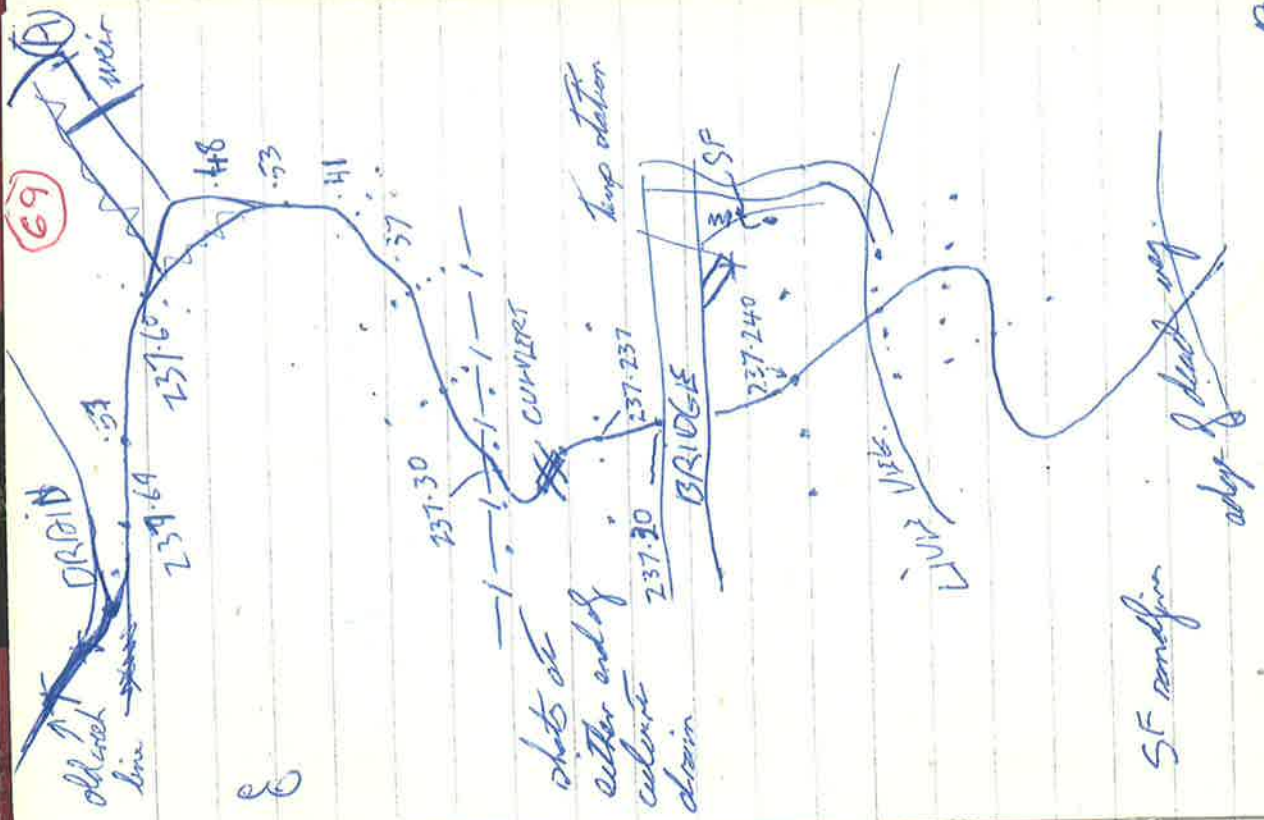
Jim's pick up 4:00 pm.

drive back to Wangan Hills

put out batteries on charge.

Jim's 5:30 pm.

(69)



S

(71)

4/9/01

Start 7:30

arrive Lake Hinds 8:20 am.

Lake depth has dropped back to old 2x Plato gauge, which

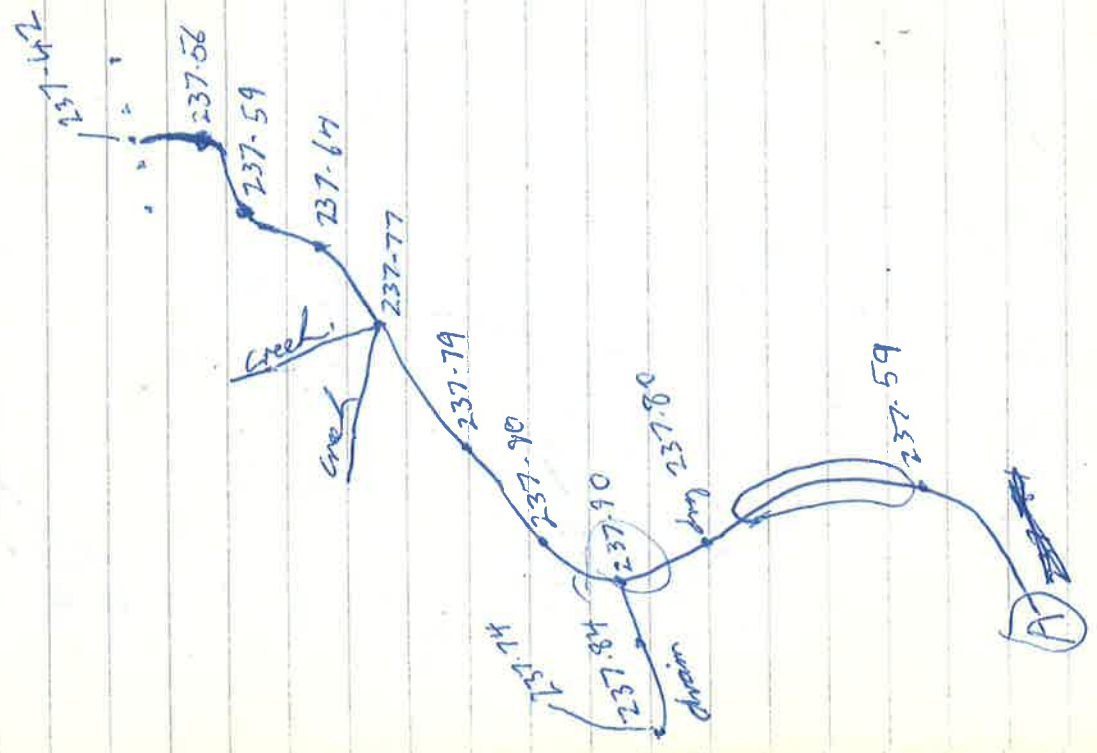
has fallen over.

a gauge is visible 200m further out into lake.

new gauges are needed.

dumping level needed to get unwanted water level.

(70)



72

4/9/01

depth in old quarry 2 (2m)

was 1.7m.

Soil at Corrambine

LAKE NINON

bank

flow into lake



Bottled water
Tissues

BP cream
Toilet paper

Lake King 98744048

Start 7:30 12/9/01
Car-camp

Yerepinnis
All three proposed lakes are
very shallow the deepest being
~250mm. The vegetation around
the lake edges are sparse with
low shrubs and areas of tall
tree cover. Probably suitable
for DGPS or RTK work.

Tea and oil
Olive oil and oil

75

Salinity level check
June 10.

76

12/9/01

Yeelams

PH Calibration new probe.

7.0 buffer read 7.10 @ 13.4°C

adjusted to 7.03

-5mV

10.0 buffer read 10.33 @ 13.6°C

adjusted to 10.06

-58.6mV

-5mV

depth 1-16m. 11/1 12.50

PH 7.91 @ 16.8°C

BROWN 1-15 pm

depth 0-25m. 11/2

PH 7.44 @ 20.2°C

PHN not filtered.

77

12/1/01

White Water

1400 hrs

depth 0.08 992

pH 7.77 @ 20.0°C

CORROGIN

1500 hrs

depth -0.5 m below 0.0

pH 9.34 @ 18.9°C

p-N not filtered

Varley

1730 hrs

depth 992 0.26 m

pH 8.02 @ 16.3°C

p-N not filtered

Calibration

pH 7.0 read 7.01 @ 17.1°C

pH 10.0 read 10.01 @ 17.1°C

Final Lab King 6:45 pm.

(78)

13/9/01

Stone Lake King 7.30 am

ATKIN'S Lake 9.00 am.

Calibration

7.0 buffer read 7.03 @ 17.4°C

adjusted to 7.05

-4 mV

10.0 buffer read 10.00

adjusted to 10.11

-58.5 mV -4 mV

depth 4.10 98.2

pH 8.25 @ 12.4°C

Remnants

9.40 am

902 depth 8m below 1m mark

0.92 m.

pH 9.10 @ 12.1°C

Bennetts 10:30am. 13/9/01
depth 3.0m egg (3m) egg 3 new
of april 01

PH 7.83 @ 13.1°C

Cont lake Bryde is dry
Lake had hard very flat
surrounding veg. has both eucalypt
woodland not condense to
GPS relatively signal interference

Lake had vegetation is very low
have close walking only
suggested method.

13/9/01

LOKLE BRYDE

gauge No. 1 the gauge is dug
and has a '2' at the top and
a F+W sign above it. The plate
needs replacing. This is the only
gauge I have read in the
pond.

depth 0.59 g 2 gauges need
replacing
PH 8.24 @ 15.8°C

bottom of lake very flat. Some
depth 600m Success lake.
the surrounding vegetation is thick
and high. Kewalysts which are
not conducive to GPS satellite
coverage. EDM prism in a hole
very good. large areas of open
water.

(81)

10 1/2 north of Pingarup
4 short-tailed sandpipers

(82)

13/9/01

ALTHAM

1345_p

depth 0.14^m

pH 8.18 @ 18.7°C

PTN not filtered.

Range lead

1450

depth with below gauge.

dragger installed 490_{mm} exposed

pH 9.73 @ 17.3°C

a 1m gauge is needed.

Yachup

13/7/01

1600

depth of 2 0.4m plate reads
replacing

gauge 1 reads plate replaced.

pH 9.66 @ 16.9°C

PO4 not filtered

Calibration

7.0 buffer read 7.03 @ 19.2°C

10.0 buffer read 10.02 @ 19.1°C

finish Hoptown 7.00pm

(84)

14/7/01

Hopetoun

Time 7.15am.

8.00pm

Jardine
Calibration

7.0 buffer read 7.01 @ 13.8°C

adjusted to 7.02

-3mV

10.0 buffer read 10.03 @ 13.7°C

adjusted to 10.05

-58.2 mV

-3mV

depth 2.13m @ 3(3m) 1997

pH 8.32 @ 14.3°C

(85)

North Parriap

14/9/01

9:40 am.

depth the water level had completely covered the 1m gauge. I knocked a dropper down to the water level 7m to the SSW from the bench mark. height ~~0.659~~

pH 7.90 @ 15.9°C

Exposure 26410 11:00 am

depth measured with offset top 450mm from Benchmark 49 to top of water. LH = 0.659

pH 7.30 @ 15.8°C

0.659

+ 0.450

1.109

1.11

86

14/9/01

Coonallidgump

12.00 am

depth 2.52 m g/g 2

Jim Bone's dragger is 190mm
exposed wt of the water

pH 8.34 @ 17.2°C

GORE

1330

depth 1.58 g/g 3.

pH 8.48 @ 16.6°C

Shark

1635

depth 2.50 g/g 2

pH 7.99 @ 16.8°C

(3m) 1917

(87)

10/9/01

ESPERANZA 27985

depth 0.11_m

RIS Calibration

7.0 buffer read 7.03 @ 19.6°C
adjusted to 7.00

-5mV

4.0 buffer read 3.97
adjusted to 4.00

-58.8

-5mV

pH 4.16 @ 23.1°C

WARDEN 1740 14/9/21

Re Calibrate

7.00 buffer read 7.01 @ 19.8°C
adjusted to 7.00
-6mV

10.00 buffer read 9.9 @ 19.5°C
adjusted to 10.00
-58.1mV

-6mV

PH 8.25 @ 14.8°C
depth 2.45m

Exposure finish 6.40pm

(89)

Bread
steak
pepper ports
tomato
carrrot
matoes
blanbat

(90)

17/9/01
pc
Mulle station

15/9/01

Start 7.30 am.
Calibration

7.00 buffer read 6.97 @ 17.0
adjusted to 7.01
-4 mV

10.00 buffer read 10.05 @ 15.4°C
adjusted to 10.05
-58.1 mV
-4 mV

depth 0.79 m
PH 8.04 @ 13.9°C

wheat field 9.10 am
depth 2.07 m
PH 7.74 @ 15.1°C

99 Tin below dropper 9m left

(91)

MORJISUNUP

15/9/01

10.51

depth 3.14 m
PH 8.51 @ 16.6°C

MT be Grand. 1.50 pm

depth 1.40 m
PH 6.62 @ 16.8°C

Stopo NP finish 6.00 pm

start

MJEARS 16/9/01

Calibration 1500 μ o. 20.0 $^{\circ}$ C
7.00 buffer read 7.02 @ ~~20.0~~
adjusted to 7.00
-5mV

10.00 buffer read 9.98 @ 19.8 $^{\circ}$ C
adjusted to 10.00
-57.7
-5mV

pH 7.77 @ 22.3 $^{\circ}$ C
depth 0.59m gg 3 (1m) 2001

Beverley 3.50m
depth 7.57(?) gg 3
pH 7.99 @ 19.8 $^{\circ}$ C in creek.

93

Georaping 1700 15/9/01

depth 0.62 m

pH ~~7.34~~ @ 18.4

6.97

Dobsonday 6.00 pm.

depth 0.39 m

pH 7.34 @ 18.1°C

Trawl to 2000 lbs.

(94)

STEVEN WHITE

HM 93858285

MOB

14 VANABIN CRS
CITY BIRACH.

93009292 ANS riv.

back to ANS before 10:00 am.
THUR.

20th with pantone with top
husks
cereal
meal bars
fruit cake
beans/soy
nuts

(95)

AVIS OD 106825 5/11/01

leave home 6:55 pick up car
7:00 am

load which at woodlake

depart woodlake 8:15.

Picked Steven White up at 8:45

pH Calibration

7:00 read 7.03 @ 23.8°C

adjusted to 6.99

-8 mV

read 9.94 @ 23.7 did not adjust
-57.7 mV

spanning 12.08

depths 0.48 m 991

-PH 6.94 @ 26.00°C

(96)

(97)

5/11/01

beachy 1415 hrs

depth 7.50m, 993

pH 7.47 @ 28.4°C

Mead 1500

depth 0.41m 993 (1m)

pH 7.67 @ 30.6°C

Ardat 1655

depth 991 1.05

pH 3.52 @ 23.8°C

Compton 1900 hrs

depth 0.23 992

pH 2.62 @ 21.0°C

finish 1955 hrs

Calibration

7.00 read 7.01 @ 28.2

adjusted to 6.98
-9mV

4.00 read 3.98 @ 28.2

adjusted to 4.008
-59.8

5.00

-95mV

1022.5

6/11/01
Depart Morrison 6:30am
1/2 jar brought on side of road

Measuring dry
replaced 1m plate

Forward 9:50am
Depth of 0.16m
pH 9.87 @ 23.2°C
Total P-N not filtered
calibration
7:00 read 7.00 @ 21.0°C
did not adjust
-9mV
10:00 read 9.85 @ 21.5°C
adjusted to 9.99
-57.6mV
-9mV

5.4

1.5

1.5

5.2 18.2

9.4

10.5

11.2

(99)

6/11/01

NINDEN

depth 670mm below 1m on
string line depth = 0.38m.
pH 7.22 @ 25.9°C

HINDS 1315hs

depth 1.48m

pH 7.88 @ 25.1°C

0896517007

Booby chry 3.30

Blue Gum 1730 hrs

Depth measured depth

point with top 0.06m.

lake bed level of egg 2 = 0.15m

pH 7.31 @ 27.1°C

Finish 6.30pm.

7/11/01

Start 7:00am

Exams 8:40

depth 0.8 old 1m yg

pH 7.33 @ 22.6°C

pH Calibration

7:00 read 7.00 @ 20.2°C

not adjusted

-9 mV

10:00 read 10.01 @ 21.1°C

adjusted to 9.99

-57.4°C -9 mV

YARRP YARRP 11:00am

depth yg 2 0.13

pH 7.35 @ 27.0°C

13
74
12/a

(101)

7/11/01

logue 1328

depth 1.49 m

pH 8.85 @ 22.8°C

Curaga 3.30 pm

depth gony 1 (3m)

2.12 m.

Total PON not filtered

pH 8.91 @ 26.3°C

CRD&LRS 1615

depth vs 1.01 m gony 2

pH 7.81 @ 24.8°C

Wannamot 1730

depth 1.27 g 1

pH 10.04 @ 24.8°C

7/11/01

Bamber 1820

depth 1 2.41

pH 9.68 @ 22.2°C

CHONDOLA 1900 hrs

depth 0.86 m egg 1

pH 7.95 @ 23.8°C

start 8.30

8/4/01

Swindship

depth 9.10 m

pH Calibration

pH 9.49 @ 21.0°C

7.00 read 7.03 @ 21.7

adjusted to 7.00

-11mV

70.00 read 9.98 @ 21.9°C

not adjusted

-57.4

-11mV

103

8/11/01

Sandalsup

1000m.

Depth of (water)

44.86m.

top of water gauge 46m

PH 5.98 @ 21.9°C

OD 108666 Km

SCOTT'S BIRDS

7874536140

W/BH

088-51