

Alan Clarke's Field Notebooks CONTINUED

(INDEX) (UPDATED ON 09 AUG 2014)

(Only pages with notes are numbered)

- 22. 2002 (05-07-2002/25-11-2002)
- 23. 2002-2003 (11-11-2002/19-09-2003)
- 24. 2002-2004 (14-10-03/27-11-03) + (09-03-04/17-06-2004)
- 25. 2004 (03-08-2004/29-09-2004)
- 26. 2004-2006 (08-11-2004/19-11-2004) +
(13-03-2006/09-11-2006)
- 27. 2005-2006 (05-07-2005/10-02-06)
- 28. 2006-2007 (14-11-2006/07-11-2007)
- 28A 2008-2009 (25-02-2008/23-02-2009)
- 29. 2008 (05-03-2008/09-11-2008)
- 30. 2009 (11-03-2009/04-08-2009)
- 31. 2009 (18-08-2009/16-11-2009)
- 32. 2009 (02-12-2009/11-12-2009)
- 33. 2009-2010 (14-12-2009/19-02-2010)
- 34. 2010 (26-05-2010/17-09-2010)
- 35. 2010 (12-10-2010/12-11-2010)
- 36. 2010-2011 (24-11-2010/28-03-2011)
- 37. 2011 (07-06-2011/08-06-2011)
- 38. 2011-2012 (03-11-2011/01-03-2012)
- 39. 2012 (12-03-2012/27-04-2012)
- 40. 2012 (07-05-2012/21-08-2012)
- 41. 2012 (08-09-2012/30-10-2012)
- 42. 2012 (03-11-2012/07-12-2012)

Alan Clarke's Field Notebooks CONTINUED

(INDEX) (UPDATED ON 09 AUG 2014)

(Only pages with notes are numbered)

- | | | |
|-----|-----------|--------------------------------------|
| 43. | 2012-2013 | (07-12-2012/17-01-2013) |
| 44. | 2013 | (22-01-2013/20-05-2013) |
| 45. | 2013-2014 | (22-05-2013/27-03-2014) |
| 46. | 2014 | (09-04-2014/ 12-06-2014 and onwards) |

Alan Clarke's Field Notebooks

(INDEX) (UPDATED ON 09 AUG 2014)

(Only pages with notes are numbered)

1. 1992- 1995 (12-07-1992/19-10-1995)
2. 1995-1996 (06-11-1995/21-11-1996)
3. 1995-1996 (08-11-1995/11-03-1996)
4. 1996 (12-04-1996/29-11-1996)
5. 1996-1997 (09-12-1996/06-08-1997)
6. 1997 (13-08-1997/14-10-1997)
7. 1997-1998 (20-10-97/23-10-1998)
8. 1998 (04-05-1998/04-08-1998)
9. 1998-1999 (08-09-1998/04-02-1999)
- 9A. 1998 (09-11-1998/24-11-1998) Plus sorting of invertebs. from Muir-Unicup wetlands in 1996 & 1997).
10. 1998-1999 (30-09-1998/18-02-1999)
11. 1999 (15-02-1999/08-06-1999)
12. 1999-2000 (27-05-1999/24-02-2000)
13. 1999-2000 (29-06-1999/20-01-2000)
14. 2000 (29-03-2000/17-04-2000 and 27-09-2000)
15. 2000 (26-04-2000/15-08-2000)
16. 2000-2001 (01-05-2000/16-03-2001)
17. 2001-2002 (30-10-2000-19-07-2001)
18. 2000-2001 (06-11-2000/23-05-2001)
19. 2001 (02-04-2001/08-11-2001)
20. 2001-2002 (26-11-2001/11-04-2002)
21. 2002 (07-05-2002/25-05-2002)

NOV 2010 - MARCH 2011

MARKRYTE

ALL WEATHER

WATERPROOF NOTEBOOK 110

①
Alan Miller 97810444

Geotech

Fisheries

pump card

cut board.

else motor

anchor

Buckets 2x large.

glasses.

Mat *

dry boots

crab nets

rain coat *

2

Manning WPIS

EAST BAY 430234

6144788

MID BAY 429336

6145447

1st BAY 428480

6145292

PINGLERUP RD WPT

451925

TRUCK 451247

6150129

HEAD 6149606

start 0800

24/11/10

3

quit party vehicle, load bread,

quit vehicle, and do food shopping

start drive to Northall 10:00am.

meet John Gaff at 1200 - lunch.

travel to Godwin R. crossing, left Tashis

car and travelled together to Mangrove

Next time use Devide waste RD.

Mangrove

start in forest @ 3:30pm.

LPL 1 open note

PRAD 2, 40

Mark 2 + 2 + 4 + 2

headhead 2

Honey headed 7 + 6 + 2

TYRHO @ WPT 122

BWST W. 1B12 x 1

SWAN 1 + 5 (monthly) + 6

WOOD P. 4

galeander (native minnow)

lots of J at junction of Bar near

1st Glendal Bristow Paper

(A)

24/11/10

1610 Washed Bait B.

at 123 WPT in wash Ba
misc 30 cm H₂O lots of eggs

spotted tracks

among burrows were with
3 eggs + 2 newly hatched

at WPT 124 Chicks!

lots of tall Ba on edge
with fine edge, ground with
pikilata

fine edge, shallow area
cutaway behind Ba.

WPT 125, 1825 two 2nd WPT B.

Two birds flew in SE
direction.

1st bird only 10m from bait.

birds moving 1830

5

24/11/10

Morning

additional birds

great egret x 1

swamp sparrow x 3

owls x 2

Darter x 1

little green birds
numerous.

@ MPT 125

listened from 6.30 - 7.30

no AKB calls.

drive back over Gordon river
picked up John's car drove
to Northcliff then into Wolseley
finished @ 1200 midnight.

DATE 0900

25/11/10

Bovine Herd 1

2 x Spring tern

rusty Legull

gull billed tern? x1

Black duck x 2+3+10+1

Petrel

GPC x 3

Swan 11+2

HMG 5

Little Black Cormorant 8

swamp hen 1

lake depth 0.72.

spantlers creek on ocean (swims)

side: lots of number activity -

digging by isopods.

Dunlopian collected because rocks

are new day. possible Butte

25/11/10 (7)

Habitat around edges of pools.

5 Spring terns in the

5 Golden in total

no Fresh yabbie clumps.

Spotted 330 pit check GPS

removed from from young area.

Now area was nearly dry to dry
near yabbie edge. Water gets
deeper as you go towards Mel.
Thicket is providing suitable.

Habitat are more levels of water
in lake. Nests are likely to be
near Mel thicket edge.

Nest area need to be in low
on other side when FUSB is

easy to access. position FUSB
for more safety.

8 25/11/10

walked into southern Bee
method that is separate from
BOA1. each 10cm deep from
Bampton nests. 1 wask nest this
year (beard shape) at WOT 126

include 3 children in case of BOA1

listened from 6PM - 7.30
rain began at 7.30 strong wind.

N/E corner of slypha was dry
no new slypha season.

L.P.C. total 6
spatters each has

heavy mucus this year.
ear size something 15 knots,

good numbers of frogs in NW area in
drips water near Mel Thicket.

~~to~~ Gambusia fish.

Travel to Aldpole - Spring 2006
hrs.

Start - Walpole 0830 26/11/10
Travel to BOA1

Fine strong easterly wind.

walked into wetland from NW
chambered forest track!!!

and end to Walpole to bank cut.
start morning 9.50

fresh yellow warblers
were calling

Gabaria Small Ba in middle
water 10-15 cm deep.

WPT 12.7 good area for next
and Sucky Bittors pool with

Take 1.8m Ba - gabaria.
Sucky pools - yellowish shells.

good Ba habitat for next
get WPT 12.8.

Finish morning edge 11:20
walked over through land.

Leach 26/11/10

Travel to Farm via Normandy RD.

Depth 0.23m.

Temperature in lens 4.55N

WEH 1

Time 2.45 working

platform possible 4H6

YARDION 2

edge of Thicket, Palmadler
this year.

WFH 16.

Little grass level this year

YARDION 3 dry shallow ponds

1m from base of Blk Camp.

YARDION 4 Redwood

WPT 142 Red wood.

ammovent nests present

143 Little. Better very
400mm off Deck. H20 has been
here.

26/1/10

DLB spot NW side
very close to edge.
drumming by larvae and Yellie
when out major nest.
nest 500m from dead.
Sp. Be. water around. The
Be.

limited with 1700hs.
around Sp. 15-20 Kts
gc changed, not in

trough to Cheyne Road
later from 7.30-8 pm
lots of groups.
Mush did call.

Drumming call.

DLB 7.52 1 Boom.

Sp. 8.30 m.
10-15 Kts SW mid

start 0830

27/11/10

(12)

Chayne RD.

depth @ A = 0.96 m.

start muddy 0930

swamp x 1/2 near of B.

144 large tall thick Ba

five small clumps on west side

2 x swampy nests. 1 of with side

nest underneath. 1 round

based with swampy feather

possible swampy stalk

wide heard in Ba clump.

Red warbler in Ba clump

little Grass bird in separate

Ba clump. lots of traps!

145 Tall isolated Ba clump

swampy LB like nest. smaller than

swampy. yellow claw. 100% shot

* white shot ^{Waterfowl} near off

13

next is fine ridge with
some thin Ba. possible ALB

Spurk wading 12-15 pm

knob

Start wading 1-45 pm.

1 nearly fledged Swamp Sparrow chick.
wbt, 147 mmol about nest

egg still clam in Ba clump

Spurk wading 2-30 pm.

temperature near ground

water stopped 90 in. in 20 cm H₂O

PLEA05N dry.

Ba 25m north 5cm H₂O.

PLEA03N nearby dry.

wpt 149 5cm deep.

wpt 150 20cm deep.

wpt 151 ^{NALERT} 20cm deep.

27/11/10 Jinx meeting 1815.

listened 6.45-7.30

weather safe + 2
messages

no AVSB calls

25kts SSE wind all day!

Jinx 8pm.

Start 0830. 28/11/10

from 25kts wind/sunny

PLEASANT. Message to wear the

from ~~the~~ side near boggy

Early eye water with some

around the boggy. printed!

made much dust.

AVSB called / Boom 0930

Close to boggy, but close

to shore. I was on track

getting ready to start meeting.

Start meeting 9.50am.

(15)

Polypus river is old drainage
it has a ramp/river near
south mouth 2x ramp/river
near from last year

depth near Dam:

depth the Caohai 30-40m.

amongst river flooded from.

NPT 152, 0.5m H₂O rally

on abutment.

little grass bed near wall

4 eggs, feathers of rump
and bottom.

fall water level change of Ba
near middle.

depth @ B = 0.69m.

PLEASEB - NPT for gauge B.

Janish money 10.45.

eye changed + morning tea.

transferred to Miller

lunch.

with 28/10/10

start work 1.05.
Pend 3+3

emulsion with 1

Black forest D. 2
WFH 1+2+3

WPT 153 smooth and new.

mainly dry 10 on 400 for H₂O
top of shade logs among its
cell near 2nd part of work
and new.

April 0.38m
depth water 10cm!
finished working 2.05pm

Travel to Yellingup

start 3.40

open that 'fresh' on Lincship
Baldwin. 25

July test. 30.100
oilier gull 3

(17)

milk
meat
fruit juice
eggs
Honey

28/11/10

unfished turn!
Greenbank 4+4+3+2
Droplet 200

Bare 1000 ± various
stages of brown band.

BWS 090
Smith 4:55
depth below 0.5m.

tray to Bremer Bay
Smith 1800

date 0830

tray to exp. I
lunch

short survey 1.30pm.
water 1

water next 20m from open
water

WPT 154 Deshaint that
near ^{Waterproof} Brook in hollow.

ESPI continued 29/10/10

HHG 1+2+6

Suzan 2

Purple night heron - 2 (pair) flying over

Black duck x 1+2+2

Blue Bullfinch duck x 8

Woodcock 5+18 (100)

LPL 2

WPH 3

grey teal 6

grey Munt duck 2

Freckle duck 1

dead Yate mostly N.E. area and North

finish 1450

Travel to SHARK L.

SHARR lab. 29/n/10

HHG 2+3+5

Sparrow 2

Black Duck. 10+4+4+6

Green teal 4+2

Mallard duck 1+11 (12)

Green-winged Teal 1

Coot 4+4+2

Loon 1

Song sparrow 2 with 1 chick 1 month

A. Red-wings 1

Little black cormorant 1

Shelduck 2+1+3

Blue-billed duck 2

Starling made 4:35 pm.

Crane 1

Chestnut teal in pair.

Report @ B = 2 m.

fine sunny day strong SE breeze

WPT 0155 possible

mallard duck pair 30 on D 30m

top 400 m later for H2O. that

(21)

2 no. unfinished
5 m away. neither nest
had any eggs.
30 on 140 deep.
156 little grass bird nest.
no eggs.

157 possible start to ALB

400 420 nest,

400 from 130 Thick Ba.

wake nest of fine grass with

even more thick structure

around + intact

Red Warbler - many

little grass bird.

on my job x 2

11PT 158 wake level in Chase Ba.

11PT 159 2 x grasshopper nests

finished!

Third grasshopper nest nearly.

2 no wake / large Ba very thick

grass wake substrate

Waterproof Paper

Short. 29/11/10
Ba around WPT 160

Thin.

160 rumpsh nest with

1 egg. 2nd nest of rumpsh

Wm may possibly contain
very nest.

nest 161 with grass bird nest
isolated Ba chimney.

Ba has been eaten / trampled
by stoat!

WPT, 162 rumpsh on
water level this year, near

probably ready to go.
Crack chimney.

night. Heron calling.

April evening 6.45 pm.

Final 1915 has

June 0730. 30/11/10

for lunch.
Spent 1/20 shopping

drive to the grounds
meet Ranger, Dave.

discuss Helicopter options.
go onto Frenchman's peak +
grocers N.E. wetlands.

very high potential, open
water, good B2 and low

moist feeding areas. Requires
multiple people to harvest
large area, very hot, dry

+ strong wind. Altered by
Ranger to not enter this area
today. Weather for following

days also poor

gravelled to Albany.
Spent 1800 hrs.

Start 0800 1/12/10
travel to Walsby - 24 fuel
travel to Pingsuop lake.
start small 11am.

Month June 2008
Ba was tall 1.5 and thin
stem, very vigorous
a few drops.
lots of white carcasses
on feeding pads.
very soft mud difficult to
walk.

Pingsuop WNW 320
RH 4.44 @ 22.8°C
Luffr 7 read 9.09 @ 19.3°C

(25)

Daves Lake 1/12/10
start nesting 1530 hrs.

PEAD 27+2
HMG 12
crahe

WPT 163 area sandstone to
underbird nesting
crahe heard walk a few times
tall with small water.

WPT 164 crahe heard.
depth @ A = 4.32
@ 1620 hrs.
Junk at 1625 hrs.

Junk at Bussos 1730

start 2/12/10 @ 0900 hrs.

NINTE MILE 9/2/10

Start Baroo 800

Start NINTE MILES

1045 m.

4x rumphous feeding in last water pool at end of open water section

Given nest @ WPT 165.

Given same time ago.

Weather nest WPT 166

1-2 off deck. Very thick by the

made of twigs + grass

side of top. HLB?

2x base year's nests

1m from each DWW or DLGE

this year DLGB?

1.5 high dense top.

WPT 167.

ANNB3 near open WPT 168

800 from water pool.

(27)

9/12/10

Must duck nests?
on deck. WPT 164

PM session start 12:45
re-sampled nest @ WPT 170
base 400 mm from deck.
small ramp. Level made of
TYPHO on fallen typha.

re-sampled nest 300 mm from deck.
WPT 171 again - nest ramp
feeding pad 1 m away with
surrounding grass.

Swan nest @ WPT 172
taller cover of typha - thicker
made of typha.
WPT 173 LGB? mostly
large typha 1.6 m high
Juncus 1353.

(28)

9/12/10

1m med gy B

CHANGE 1

0.900

1.334

1.539

1.592

CHANGE 2

1.585

1.666

1.460

change 3

1.800

1.504

change 4

0.504

6.901

6.988

top of angle.

= 0.087

top of angle
change 1

0.432

1.431

1.841

change 2

1.510

1.697

change 3

1.581

1.565

change 4

1.683

1.521

1m mark of B

0.928

7.056 7.133

-0.077

Δ 0.010

mx 0.082

Trench level to Barro
level 1730 hrs.

39

DANIELS LAKE 16/12/10

RB30075 logger downboard

called logger

585 volts

depth 605 mm, 14201 counts

late volts 555.

strong SWS wind

downboard successful

logger stopped

depth @ A = 4.29 @ 10.30 am

cleared rope + wire + pipe
replaced batteries

recalled logger

depth 594 14126 counts

late volts 579

reset clock. O.K. ✓

reset memory O.K. ✓

restarted logger O.K. record
file.

BROADWATER

17/12/10

0915 download logger

R30062

called logger contact ✓
609 entries

depth 461 mm 12862 units.
batt VOLTS: 582

20-30 km SE wind!

download successful.

reset file. O.K. ✓

Reset memory O.K.

Depth @ D = 10.37m @ 9.45

stopped logger

removed logger to shore

changed batteries

cleaned probe + SS wire

re fitted logger.

called logger ✓ @ 10.30am.

depth 410 mm 12524 units

Batt VOLTS 606

Reset clock. send file.
over to logging

10/1/11

Start 0830

Office prep and final pack. Good shopping

Travel to Chayne Beach CR arrive 5.40 pm.

register pack up tent etc. food + car dinner

Start listening 2010 hrs.

Nothing heard until 2110hrs finished 2130.

11/1/19

Chrysa ALB2
Myth 0.86

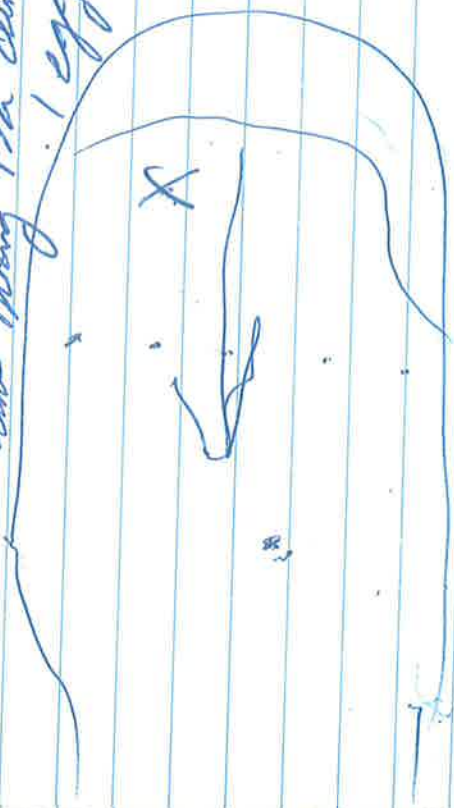
waited for 10 min
played with both types on
edge of wetland N/E side
at 0810 nothing heard.
2nd call 5 min later nothing heard.

Dandy Meadow

swamps to river

WPT 1705AUSB Judd.

WPT 1706A Red Walker near
Lake along Ba clump.
1 egg.



11/1/11

A Wood warbler.
new 1 egg. not under
relatively new nest.
Take clump of Bar.

Finish 12.50.

lunch.

start 12.53.

17 ⁸ deep board
nest likely young
10cm deep. empty
2 x adults spotted from
near car pool area.

ALBANY DEC 98424523
00

DEON ~~DEAN~~ SOAN
Fax: 98447346 Waterpro ^{RES} RIDHAM

11/1/11

WACHINICUP

waded out to tall clumps.
 area of open tall Br. water
 deeper in north end away
 from track. Good habitat for
 AVSB and ALB. open water section
 found ^{best} interesting patch near edge.
 ground quite firm. Reasonable
 numbers of Snags.
 Be very still.

Spent 6:45 at camp.

36
Paint 1200
850/m
1800

212000

interior \$3300

R3 ceiling ✓
3.5 \$1000

*ceiling ceiling?

\$? 2.7 plate height?
north side
3x brick work.

subfloor Brick x 2?

✓ cover shower extension

store + garage insulation? ~~etc~~

\$31/m² to hang
\$40/m hang.

37

2200/m 96.54% 400000

2600/m. 8% 400000

2/1300/PT

2100/m ^{new} _{margin} ^{current}

2275/m. 7% 390000

175m

x 12 = \$2000

10L JAN 24, 2011

38

~~180~~ Duplicates of 180
179

12/1/11

Start 9.50 for can 50m
WPT 180A USB Jumbled from
20cm depth

WPT 180A USB Jumbled
seen by Bee,
proofread woman by me.

WPT 182B USB new prob.
dimensions 30 x 35 mm wide
water is 15cm deep 25cm from
water to top of rock

Next is 15cm high + 10cm proof
3cm high Barometer as timber
1-1.2m high
Jin's ridge prominent

WPT 183B ~~Wampy~~ new
like Ba water next Jin's
long ans - this shows next
Jin's water 11.55m

Lunch.

12/1/11

Downland Logger

Called R1300914 1400hrs

482 ohms

depth 457 m

base volts 600

→ system message.
 faults are changed.
 downlead depth O.K.
 raised like

depth gauge.

DB: 0.560

Time made/walk 2.40
walk end.

1650 2x FUSB's Jumbled from

lake (NORTH) side of tall Ba

at WPT 18450 Jm off to

centre of lake! 1st shot-adult

7 NO bird smaller - Thinner
 eratic *Spiz* = juvenile
 mottled appearance. Adults
 more uniform colour. Tail
 feathers not full developed.
 20cm of water - adjacent
 Tall Bed. *Spiz* spread
 around, see photos
 numerous feathers found in
 all chaps and rills both
 in open and in tunnels
 high enough for AVSB
 2m in from edge of bank
 north in Ba
 18th 185 mud bank egg shell
 down.
 3 eggs in clutches.
 AVSB feather on edge of V. Thick
 tall, along Ba. small spade
 near water ^{nesting}
 numerous nests in *Spiz*
 edge of Ba. ^{open} *Spiz* low bush

(41)

WPT 186/187

12/7/11

Good AVSB ^{near habitat}
Juvik made at 1615.

Juvik 1730 at Camp.

start 0800 13/1/11

perhaps camp.

drop kg bank qui depend.

Called logger RB0095
@ 9:22am.

depth = 725m
252 entries

last volts 561

downloaded data O.K.

batteries not changed
memory not erased.

file saved.

depth at A = 0.85m.

depth at B = 0.78m.

Waterproof Paper

Dumps ¹ x 2
Dumps ² x 4

2 x AVSB Shaded from
WPT 18870 dump & taller
Ba on edge of Ba area
and low mud

WPT 18880 probably PAVSB
most lots of char Ba
cut and in waves 4000
spatter here has fallen
down in to water

height of shaped Ba
around side area very good
water height in early Nov.

189790
WPT 189797 Shaded PAVSB
from feeding pad. 11:55.

feathers (PAVSB) found
near by on feeding pad of fine
mud ¹⁸⁹⁷⁹⁸ PAVSB. find made

(43)

change gear, washing the clothes
lunch.
Travel to Busso.

(44)

10/3/11

TRANS 0730

trans to Gungahya NR

WPT 190 3x photos

Bar

young ^{immature} ALB habitat

191 peppy ridge.

192 method with Bar
great ALB habitat

45

WPT 194 Ba gelatine
2m tall, top of fine edge.

Swamp Flower
WFH x 2

Lead x 1

Swamp 1

Swamp Creek

Swamp Bottom WPT 196

Link large 10-12m
long thin

WPT 125 WPT 197

Ba fine edge.

AVSB

Swamp top from middle of

swamp Sw to left hand

High photo previous AVSB.

Swamp Day prints
Swamp 198.

April 5.30 pm 10/3/11

Start 0730 11/3/11

Travel north along

Black point road.

methods seen of hoop

in RD, remarkable joints

by ~~look~~ to making in and back

Jan joint method.

long methods to for can

would be covered with crops

glang windy tracks, across

from south V somewhere near

lake Quityup

Burkich *Coccoloba*

Swedish tree smooth bark.

Keangia - lime green thin. Thick

Bogeria sparsa 1 ridge both

Bond

Black Bull (enc.) 11/3/11
discovery apparatus from Serra.

large! Ba method
cypress and dense

lots of fine reds and cyan
material. good high
percentage fruit and trunk
mixed habitat. Grego
hard surface.

North mountain

Ba this to sparse July 15
high clumps of fine reds
not ideal

Start 0830 15/3/11
Drive to NINE Mile
install reprogram logger
call logger

Depth 0 mm 9563 counts
Booth Volt 588

see check O.K.
see to logging - O.K.
danced liked.

M'Leary 1135 am.
called logger

Depth 4 mm 9757 counts
Booth Volt 561

download successful
stopped logger.
Memory Reset completed.
Replumb booting

cleaned probe 15/3/11
replaced carbon leads

called logger 0 min 9714
depth
Both volts 579 counts
start logging O.K.
rained like

trav. to Perth
leaved 4:30 pm.

start 0730 16/3/11
trav. to Greyboro. RB0074
called logger @ 9:40 am.

depth = error
Both volts 570

550 entries
probe faults during current log.
Download successful
logs only to 25/2/11

data not correct
removed logger
cleaned profile
put back together
called logger

BOB HUSTON
92959113

0418902473
traveled to Chondola.

new record
1st rail warning north of
Tamaro RD Tom region
over rail warning along road
faint cross through veg
at 1 km go through gate
creek crossroad
traged there along fence
through mtns 2 gates
use 41 key for pull out mt
rescue.

Called logger O.K.
R50064
495 entries

depth 315 mm 11697 counts
Bat Vols 573

Download O.K. 4/3/11 data
stopped logger
Re sec Memory

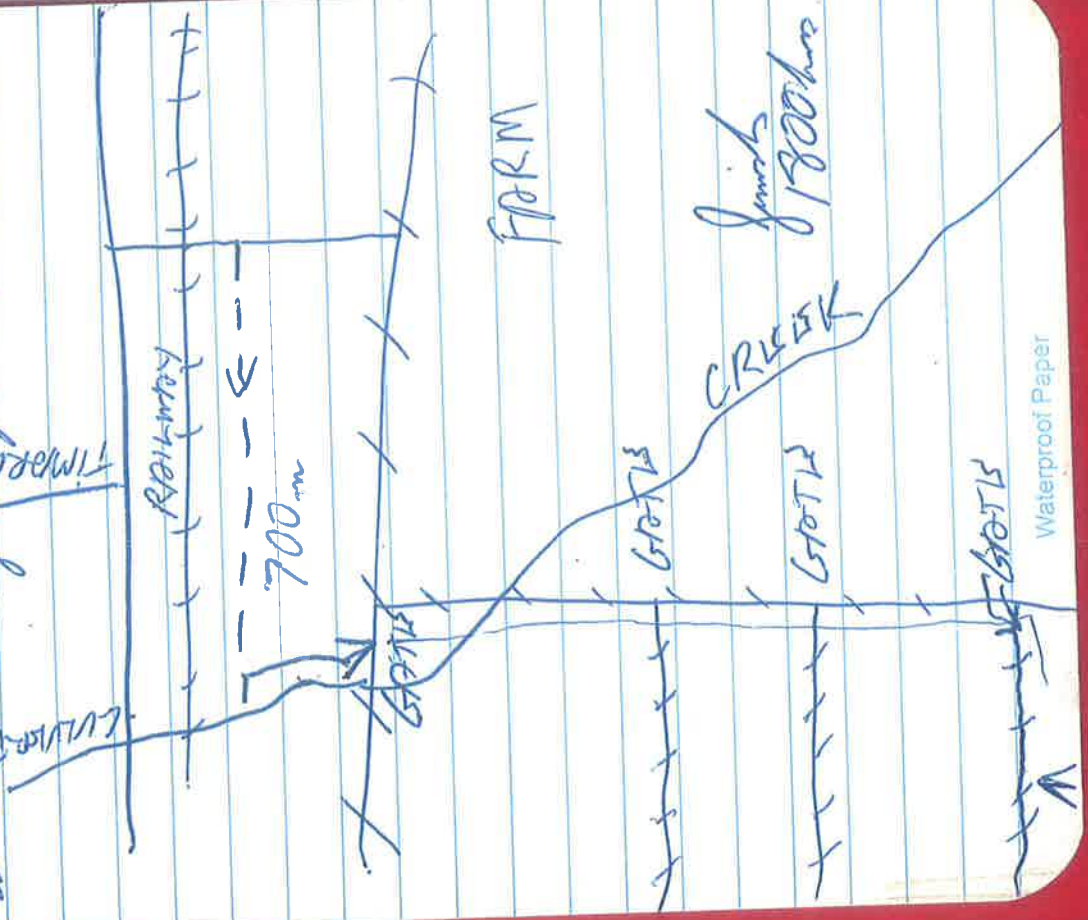
cleaned probe
new battery

Called logger
depth 3306 mm 31376
Bat V. 585 counts

removed logger for testing
in lab,

Rain gauge downloaded O.K.
CHAW002 using Chen 003 for

new choker. Also repaired electric fence and replaced batteries and ran to an #2 full power!



28/3/11

PLV

some deep
more sandy
edge in sand
more surface
near

WPT 210 2 ABs + 1 AB.

Camera port closed.

WPT 213 6TH AB.
WPT 214 7TH AB.

(54)

28/3/11

Spotted 8th bird, BUT
is it new? unsure.
Shut back to NE.

WPT 215 day.

subjects 150m down -
wet.

9th Spunk 250m SW of 215

10th Spunk @ 216
Feeding pad

11th Spunk 217 was

12th Spunk north end.

PLV 608378
Bitten nose 6146128

Journal 1830