

ALBANY

WR 93

LAKE ANGOVE

MEEKATHARRA

ANNEAN

LK ARYLE
SEE GREGORY ALSO.

Twinlock
Crystalfile



A product from the Twinlock range
of Information, Storage, Retrieval
and Display Systems.

LAKE ANGOVE

RIGGERT

DATE: 14.11.68

GENERAL COMMENT: Aerial Survey

WATERLEVEL: Full

RIGGERT

DATE: 11.9.69.

GENERAL COMMENT: Aerial Survey

WATERLEVEL: $\frac{1}{2}$ full.



Angove Lake 6 MAR 79

57-12

DEPARTMENT OF FISHERIES AND WILDLIFE
WETLAND — WATERBIRD SURVEY SHEET

WETLAND	ANGOVE LAKE
LOCATION	T.P.B. (Albany Shire)

INSPECTED BY	J. LANE. + G. PEARSON
INSPECTION DATE	Thurs 8 MARCH 79
TIME START	0925 hrs
TIME FINISH	1020 hrs.

WATER LEVEL (dry, low, half full, high, full)	high ?
DEPTH GAUGE READING (if installed)	—
WATER SALINITY (if Tasted)	Measured

WEATHER CONDITIONS	Overcast. Cool c 10 kt SE breeze.
VISIBILITY	Good
BINOCULARS USED?	Zenit 8 x 30 B Zenit 8 x 56 + Questar Telescope

	BIRD SPECIES	LARGEST FLOCK SEEN	TOTAL NUMBER SEEN	ESTIMATED TOTAL POPULATION	COMMENTS (Nesting, Moulting etc?)
1	Musk Duck	2	3	3	One (only) had large male pouch.
2	White-f. Heron	1	1	1	At waters edge
3	Little Pied Cormorant	1	2	2	Overhead.
4	Sussex Wren	2	3	3* +	Saw two birds from ridge on west
5					side of lake at 1240 hrs while taking perimeter photos.
6					Birds walking about on mats of floating <u>Clethra</u> .
7					
8					
9					
10					
11					
12					
13					
14					
15					
16					
17					
18					
19					
20					
21					
22					
23					
24					
25					
26					
27					
28					
29					
30					
31					
32					
33					
34					
35					

WETLAND — WATERBIRD SURVEY SHEET

WETLAND	ANGLOVE LAKE
LOCATION	T.P.B. (Albany Shores)

INSPECTED BY	J. LANE. + G. PEARSON
INSPECTION DATE	Thurs 8 MARCH 79
TIME START	0925 hrs
TIME FINISH	1020 hrs.

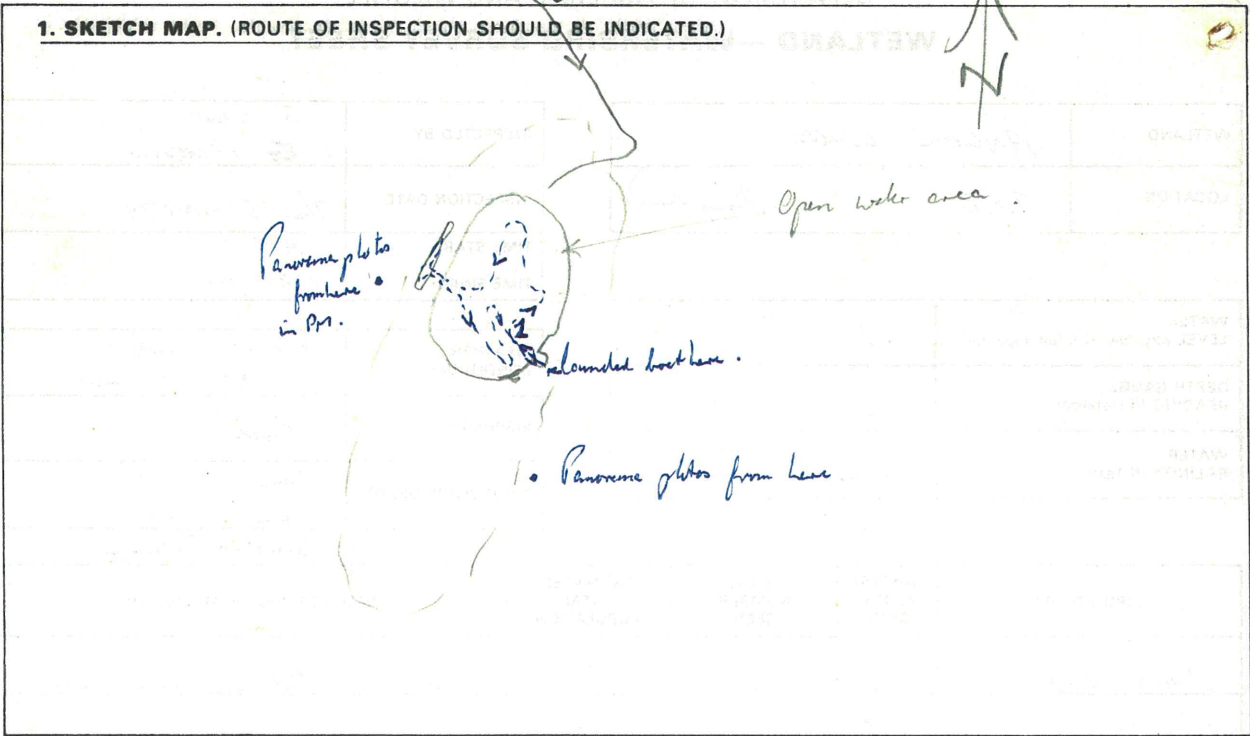
WATER LEVEL (dry, low, half full, high, full)	high ?
DEPTH GAUGE READING (If Installed)	—
WATER SALINITY (If Tasted)	Measured

WEATHER CONDITIONS	Overcast. Cool c 10 kt SE breeze.
VISIBILITY	Good
BINOCULARS USED?	Zenit 8 x 30 B Zenit 8 x 56

+ Questar Telescope

BIRD SPECIES	LARGEST FLOCK SEEN	TOTAL NUMBER SEEN	ESTIMATED TOTAL POPULATION	COMMENTS (Nesting, Moulting etc?)
1 Musk Duck	2	3	3	One (only) had large male pouch.
2 White-f. Heron	1	1	1	at waters edge
3 Little Pied Cormorant	1	2	2	Overhead.
4 Swamp hens	2	3	3+ +	Saw these birds from ridge on west
5				side of lake at 1240 hrs while taking perimeter photos.
6				Birds walking about on mats of floating <u>Clethra</u> .
7				
8				
9				

1. SKETCH MAP. (ROUTE OF INSPECTION SHOULD BE INDICATED.)



2. WATER SAMPLES TAKEN?

IF YES, HOW MANY? Indicate Sampling Sites and Sample Identification on Sketch Map.

3. IN SITU MEASUREMENTS OF WATER QUALITY TAKEN? YES

SITE	WATER DEPTH AT SITE	DEPTH OF MEASUREMENTS (surface, bottom etc.)	SALINITY parts/thousand	TEMPERATURE °C	pH
1	1.8 metres	Surface	0.55 ppt	21.5 °C	
2	"	Bottom	0.55 ppt	21.4 °C	
3					
4					
5					
6					

4. GENERAL COMMENTS ON WETLAND, BIRDS ETC.

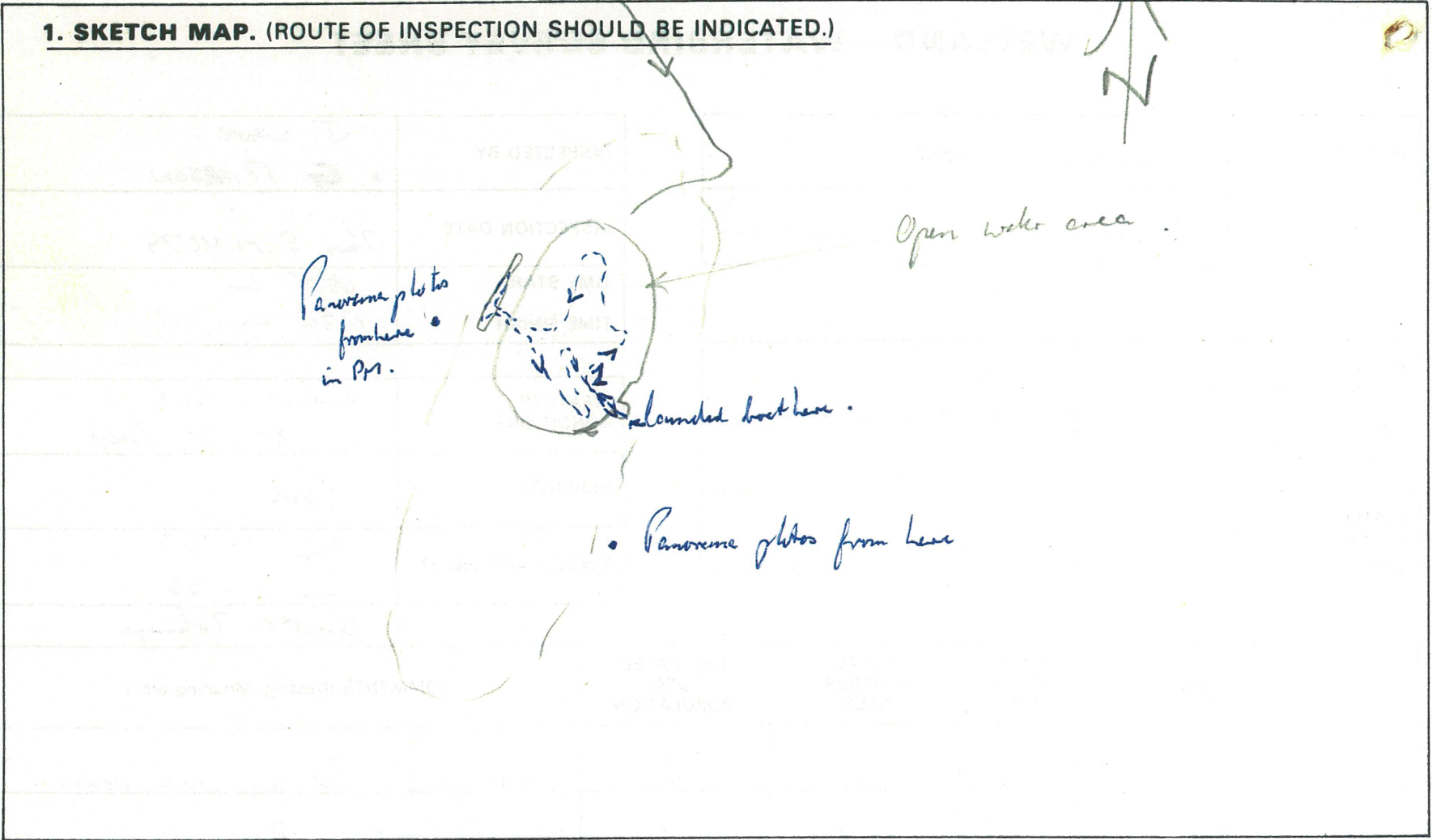
A permanent, fringed depression swamp with substantial portion covered by Clethra. Apparently supports few birds.

Depth of water in Clethra areas was approx 1.7-1.8 m.

Depth in centre of open water area ~~was~~ up to 2.1-2.2 m.

Panorama photos.

Panorama photos from west bank at 1240 hrs were 5th 1-6 incl.



2. WATER SAMPLES TAKEN?

IF YES, HOW MANY? Indicate Sampling Sites and Sample Identification on Sketch Map.

3. IN SITU MEASUREMENTS OF WATER QUALITY TAKEN? YES

	WATER DEPTH	DEPTH OF	SALINITY	TEMPERATURE		
--	-------------	----------	----------	-------------	--	--

SITE	WATER DEPTH AT SITE	DEPTH OF MEASUREMENTS (surface, bottom etc.)	SALINITY parts/thousand	TEMPERATURE °C	pH
1	1.8 metres	Surface	0.55 ppt	21.5 °C	
1	"	Bottom	0.55 ppt	21.4 °C	

4. GENERAL COMMENTS ON WETLAND, BIRDS ETC.....

A permanent, fresh deepwater swamp with substantial portion covered by Cladium. Apparently supports few birds.

Depth of water in Cladium areas was approx 1.7-1.8 m.

Depth in centre of open water area ~~was~~ ~~and~~ up to 2.1-2.2 m.

Panorama plots.

Panorama plots from west bank at 1240 hrs were 59: 1-6 m².

58:34A

58:32A



58:35 A

58:34A



MAR 79

MAF. 79

ANGOURE LAKE

Thurs 8 MAR 79

It's Kodak for color

58 33 A



PRINT
MADE
BY
KODAK

PRINT
MADE
BY
KODAK



PRINT
MADE
BY
KODAK



58 33 A

ak for color

MAR. 79

PRINT
MADE
BY
KODAK

A

58:36A



58:37A



F. 79

CR

It's Kodak for color

A 92 : 85

PRINT
MADE
BY
KODAK



PRINT
MADE
BY
KODAK



PRINT
MADE
BY
KODAK



PRINT
MADE
BY
KODAK



PRINT
MADE
BY
KODAK



It's Kodak

Kodak for color

87 MAR 79

It's Kodak for co

A 37 : 58

Angove Lake

MAR 79

MAR 79

MAR 79

59:2

59:3

59:4



59:4

59:5

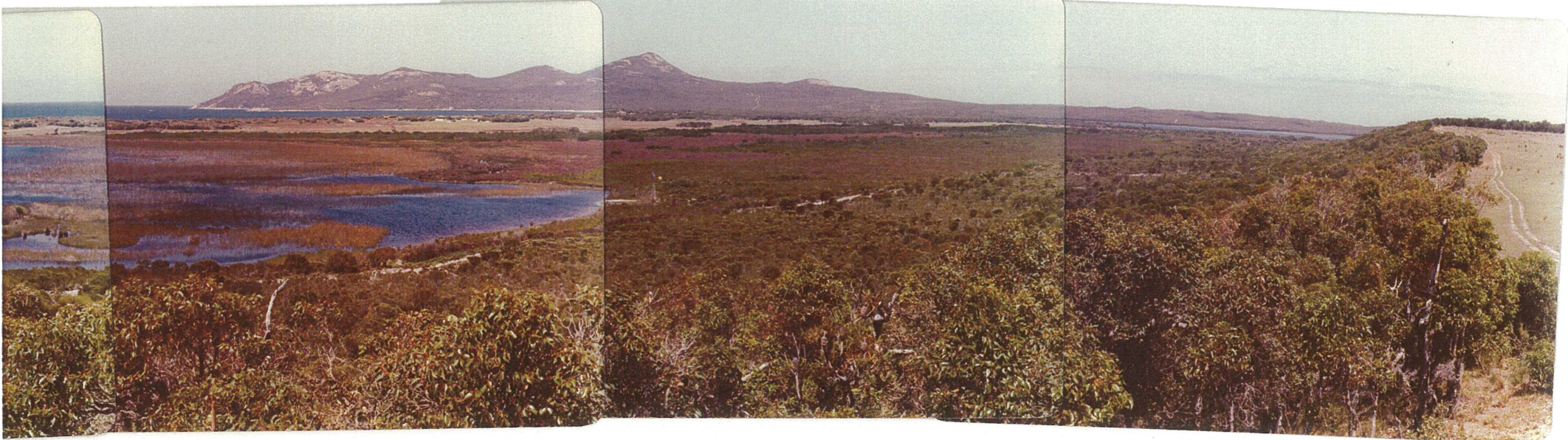
59:6



59:5

59:6

59:7



PRINT
MADE
BY
KODAK
E



PRINT
MADE
BY
KODAK
E:



PRINT
MADE
BY
KODAK
E



PRINT
MADE
BY
KODAK

It's Kodak for color color

ADVOGATE LAKE

Thurs 8 MAR 79

It's Kodak for color color

It's Kodak

59:6

59:5

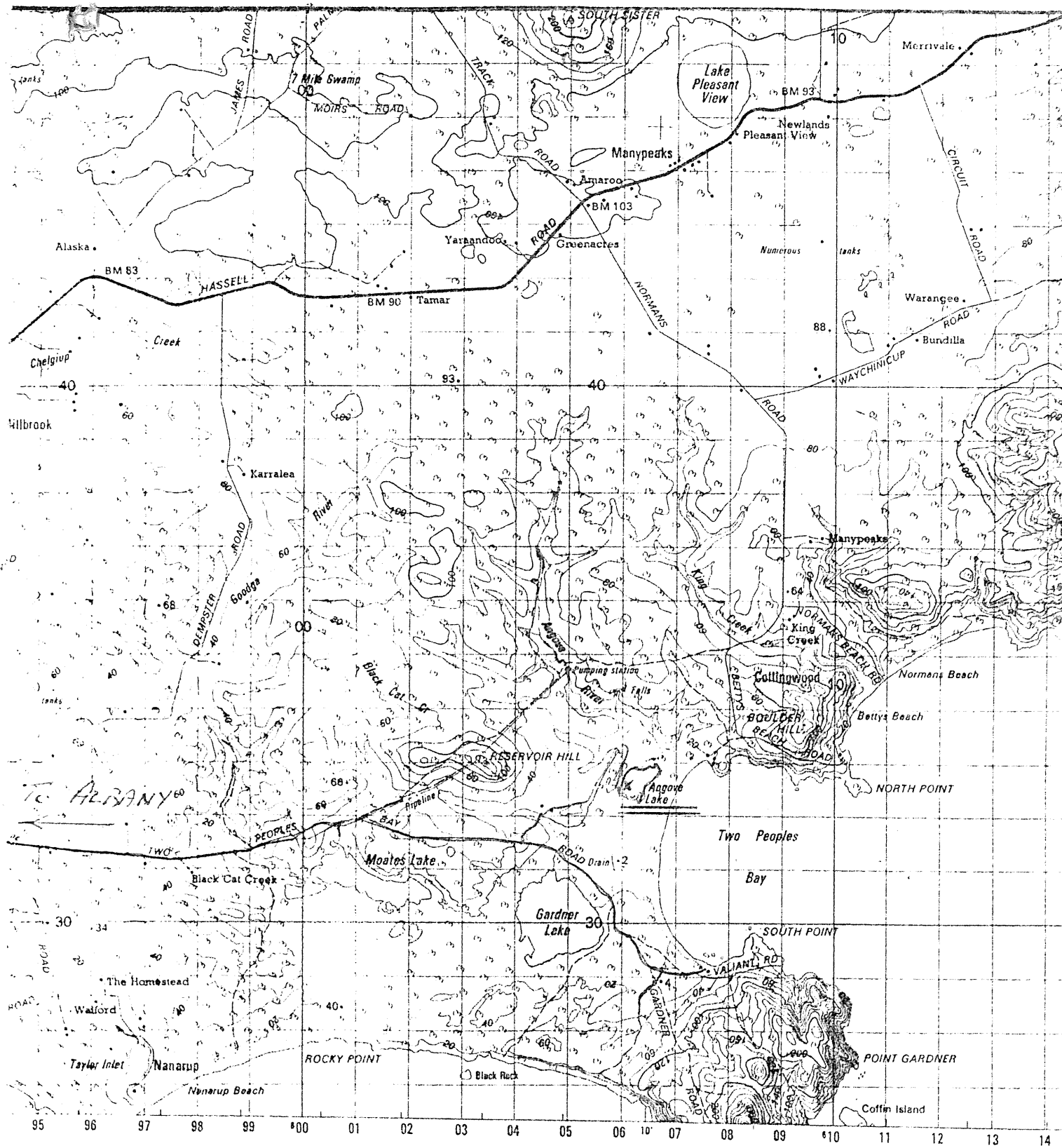
MAR 79

MAR 79

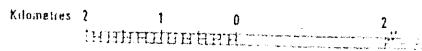
MAR 79

ANGOVE LAKE

(SEE UNDER FOR ACCESS.)



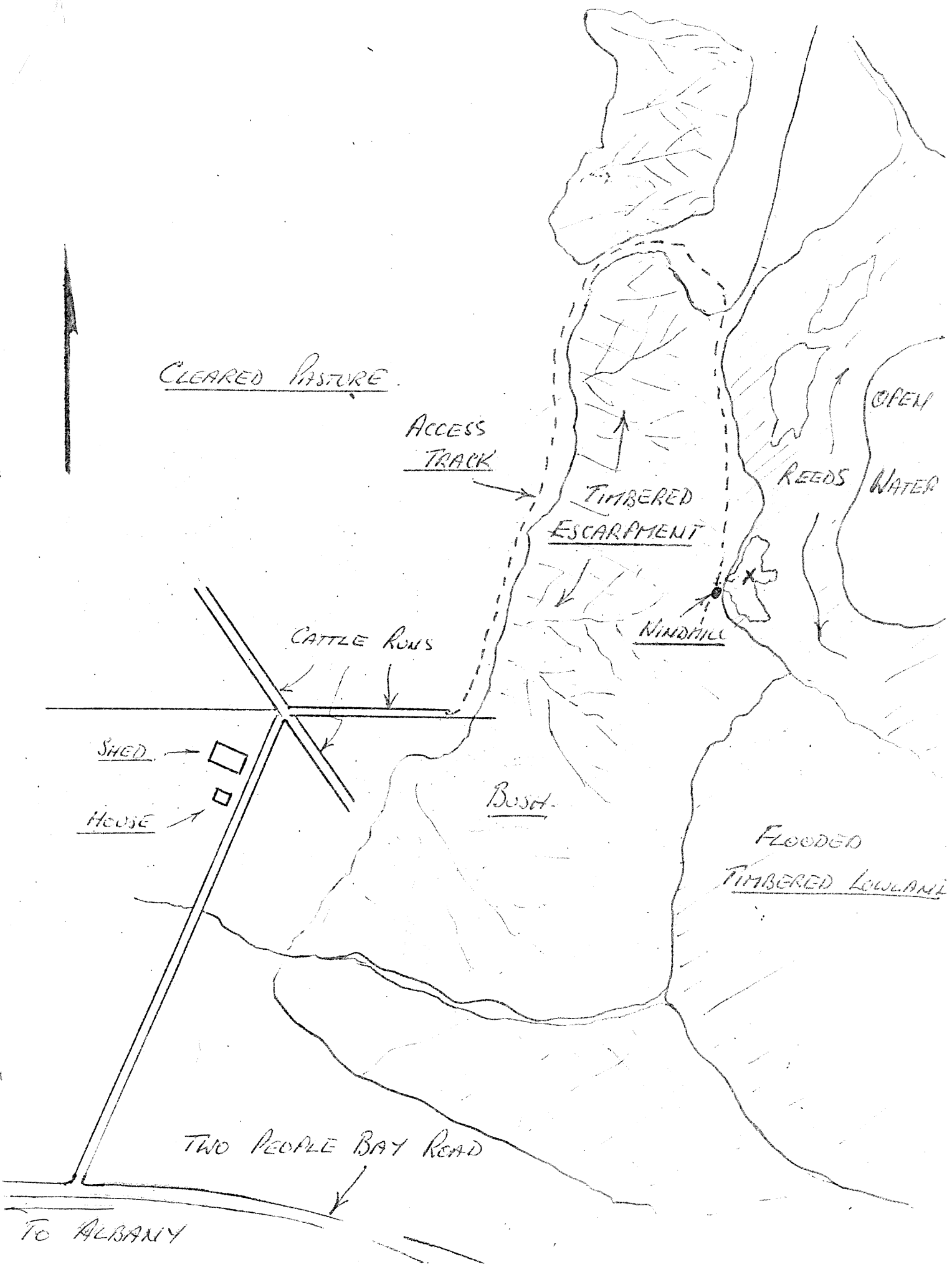
All Mapping under the direction of the Minister for Minerals mapping programme, from compilations produced by the Western Australia Department of Minerals and Energy, 1975. Accuracy of this map is ± 25 metres in the horizontal position and ± 10 metres in elevation. Information shown on this map is correct to 1974. Classified according to their intended function as part of the Mapping Programme.



SCALE 1:1

BLACK NUMBERED GRID LINES ARE 1000 METRE INTERVAL
 GRID VALUES ARE SHOWN IN FULL ONLY AT THE CORNERS
 HORIZONTAL DATUM AUSTRALIAN
 VERTICAL DATUM AUSTRALIAN
 TRANSVERSE MERCATOR
 CONTOUR INTERVAL 10 METRES
 ELEVATIONS IN METRES

ANGOVE LAKE
ACCESS MAP



ANGOVE LAKE
GAUGE & DATUM - LOCATION & DETAILS

DATE INSTALLED - 14:5:81

BY - D. R. MUNRO.

DATUM HEIGHT - 3.0M.

DATUM LOCATION - 13.0M & 215° FROM SOUTHERN
CORNER LEG OF WINDMILL STAND

GAUGE LOCATION - 86.0M & 63° FROM DATUM.

IN
↓

