

MENZIES

BALLARD

ESPERANCE

BANNITUP LK

ESPERANCE

BARKERS INLET

Twinlock
Crystalfile



A product from the Twinlock range
of Information, Storage, Retrieval
and Display Systems.

LAKE: BANNITUP

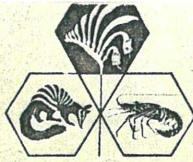
MUNRO.

DATE: 11/11/77.

WEN. COMMENT: Aerial survey

WATER LEVEL: Covered.

WATERFOWL:	50	Black Duck.
	150	Grey Teal
	500	Mountain Duck.
	1200	Black Swan.



DEPARTMENT OF
FISHERIES AND WILDLIFE

Chief Wildlife Officer,
Supervising Wildlife Officer,
Dept. of Fisheries & Wildlife,
108 Adelaide Terrace,
PERTH. 6000

DISTRICT OFFICE

P.O. Box 798,
ESPERANCE. 6450
Telephone 090 71 1839

Your Ref:.....

Enquiries K.J. Marshall

Our Ref:.....

Dear Sir,

Subject: Fauna Observations - Recent Patrol
Esperance via Starvation Bay and
Hopetoun to Ravensthorpe.

I wish to advise that this wildlife patrol was carried out in the company of the Director, Mr. B.K. Bowen and Dr. A. Burbridge, of the department.

The following lakes including reserves, were also inspected during the patrol on the 23rd November, 1977. They are as listed --

Lake Warden	Pink Lake
Woody Lake	Bannitup
Jerdacuttup Lake System	

Weather conditions were, clear sky, temperature in low 30^os.

(a) Lake Warden: (Water level low, approx. 20 cm -- Esperance Townsite region)

- | | |
|------------------------|-------------------------|
| 1. Mountain Duck | (3 to 4 thousand birds) |
| 2. Black Duck | (approx. 40) |
| 3. Musk Duck | (small numbers) |
| 4. Black Swan | (as above) |
| 5. Black Winged Stilt | (numerous) |
| 6. Red necked Avocet | (common) |
| 7. Grey Teal | (few seen) |
| 8. White Faced Heron | (odd sightings) |
| 9. Coot | (common) |
| 10. Hoary headed Grebe | (common) |
| 11. Swamp Harrier | (one pair) |
| 12. Black Cormorant | (3 observed) |

(b) Pink Lake; (Water table same as Lake Warden -- Esperance Townsite region)

- | | |
|-----------------------|-----------------|
| 1. Mountain Duck | (common) |
| 2. Black winged Stilt | (numerous) |
| 3. Red necked Avocet | (common) |
| 4. Silver Gull | (numerous) |
| 5. White Faced Heron | (odd sightings) |

(c) Woody Lake (Water level low -- Esperance region)

- | | |
|--------------------------|--------------------|
| 1. Black Duck | (approx. 30 birds) |
| 2. Grey Teal | (as above) |
| 3. Black Swan | (small numbers) |
| 4. White Faced Heron | (3 sighted) |
| 5. Musk Duck | (3 observed) |
| 6. Little Pied Cormorant | (2 seen) |

(d) Bannitup Lake: (water level low, situated 30 kilometres east of Esperance)

- | | |
|-----------------------|--|
| 1. Mountain Duck | (approx. 3 to 5 <i>Mountain Duck</i>) |
| 2. Grey Teal | (common) |
| 3. Black Duck | (common) |
| 4. Black Swan | (common) |
| 5. Red necked Avocet | (numerous) |
| 6. Black winged Stilt | (numerous) |
| 7. Musk Duck | (few seen) |
| 8. Wood Duck | (few seen) |
| 9. White faced Heron | (3 observed) |

The remains of two grey teal, one wood duck and one black duck were located on the eastern extremity, along with few No.4 shot gun cartridges.

(e) Jerdacuttup Lakes:

- | | |
|------------------|---------------------|
| 1. Mountain Duck | (numerous) |
| 2. Black Swan | (approx. 300 birds) |
| 3. Black Duck | (common) |

The following wildlife was also observed during the patrol and is listed as follows :-

Birdlife:

- | | |
|------------------------------|----------------------|
| 1. Yellow Throated Miner | (numerous) |
| 2. White backed Magpie | (several) |
| 3. Grey Butcher Bird | (common) |
| 4. Masked Wood Swallow | (common) |
| 5. Brush Bronzewing | (5 seen) |
| 6. Red cheeked Wattle Bird | (few seen) |
| 7. Grey Currawong (Squeaker) | (4 seen) |
| 8. New HOLLAND Honeyeater | (common along coast) |
| 9. Raven | (numerous) |
| 10. Sacred Kingfisher | (2 seen) |
| 11. Pacific Gull | (few seen) |
| 12. Silver Gull | (several sighted) |
| 13. Sooty Oyster Catcher | (3 observed) |
| 14. Nankeen Kestrel | (numerous) |
| 15. Black Shoulder Kite | (4 sighted) |
| 16. Whistling Kite | (3 sighted) |
| 17. Little Eagle | (2 observed) |
| 18. Brown Hawk | (5 seen) |
| 19. Australian Pipet | (numerous) |
| 20. Red Capped Parrot | (4 near Esperance) |
| 21. Willie Wag Tail | (common) |

The lakes throughout this coastal region are rapidly drying up as the summer progresses. Many of the smaller water areas are already dry. This along with the influx of waterfowl from the goldfields is causing large bird population build ups on the remaining lakes. Hence this would tend to give the public a false indication of the waterfowl population in this region, in regards to the closed duck season.

Forwarded for your information.

Yours faithfully,

K. J. Marshall
 K. J. Marshall
 District Wildlife Officer
 Esperance.

Seen Thanks IB

8th December, 1977.

Conservation: I have already complimented this officer on a very good previous report. Perhaps you would be interested to see what he is now producing. CWC 18/12

MUNRO

BANNITUP LK

DATE 26/10/78

GEN. COMMENTS aerial survey
Other lakes in this area - high

WATERLEVEL low

WATERFOWL 10 Black duck

40 Grey Teal

30 Mount. duck

Black swans - present



5072

WA 1144 ESPERANCE Run 14 (5044-5086) 20,000' 152.56mm 15.4.69 Proj G 70 -



072

5071

WA 1144 ESPERANCE Run 14 (5044-5086) 20,000' 152.56mm 15.4.69 Proj G 70 ←

071



5070

WA 1144 ESPERANCE Run 14 (5044-5086) 20,000' 152.56mm 15.4.69 Proj G 70 ←

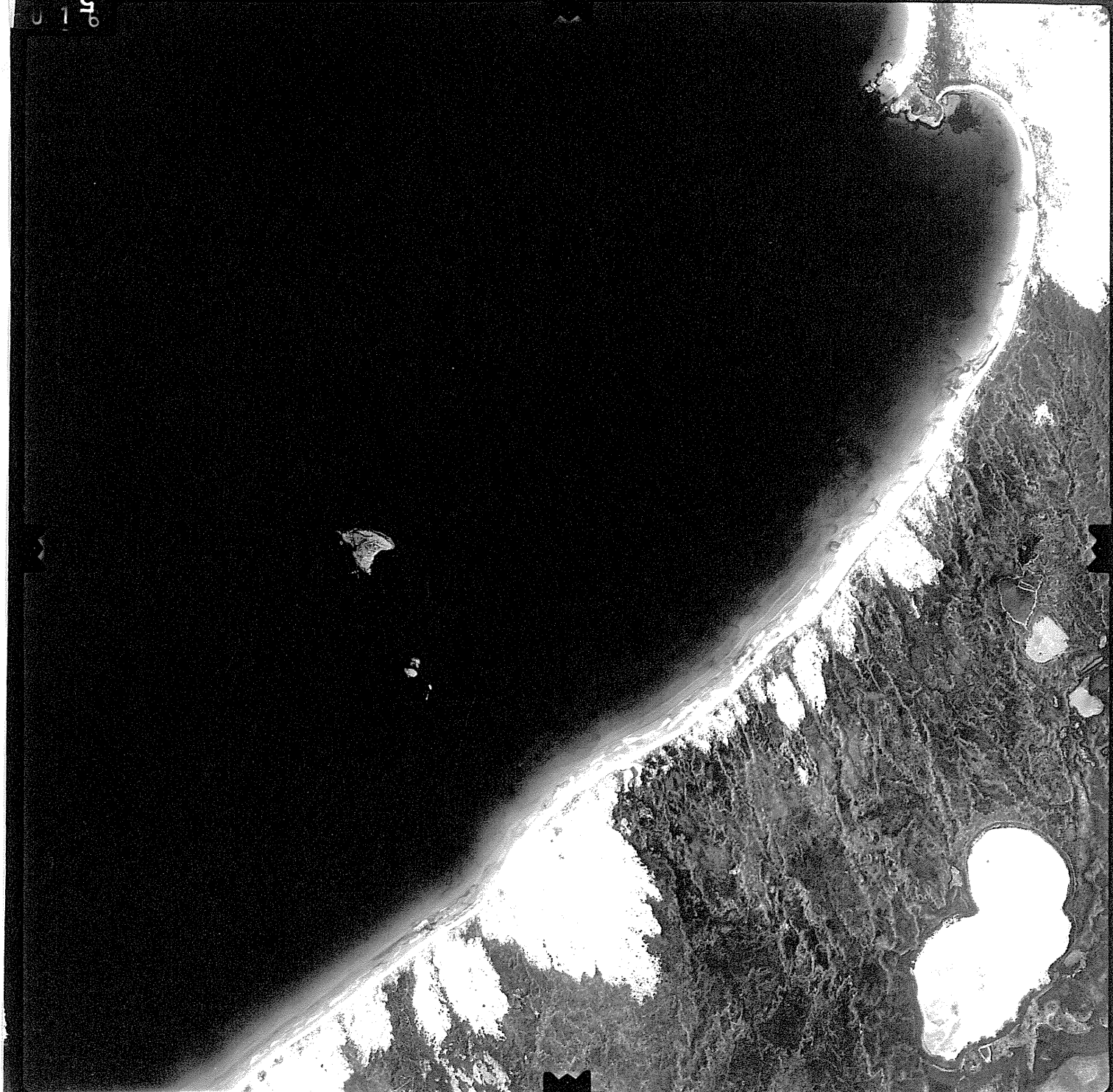
0700



5069

WA 1144 ESPERANCE Run 14 (5044-5086) 20,000' 152.56mm 15.4.69 Proj G 70 ←

U 1 10



5017

WA 11144 ESPERANCE Run 15 (5001-5043) 20,000' 152.56mm 15.4.69 Proj G 70 -

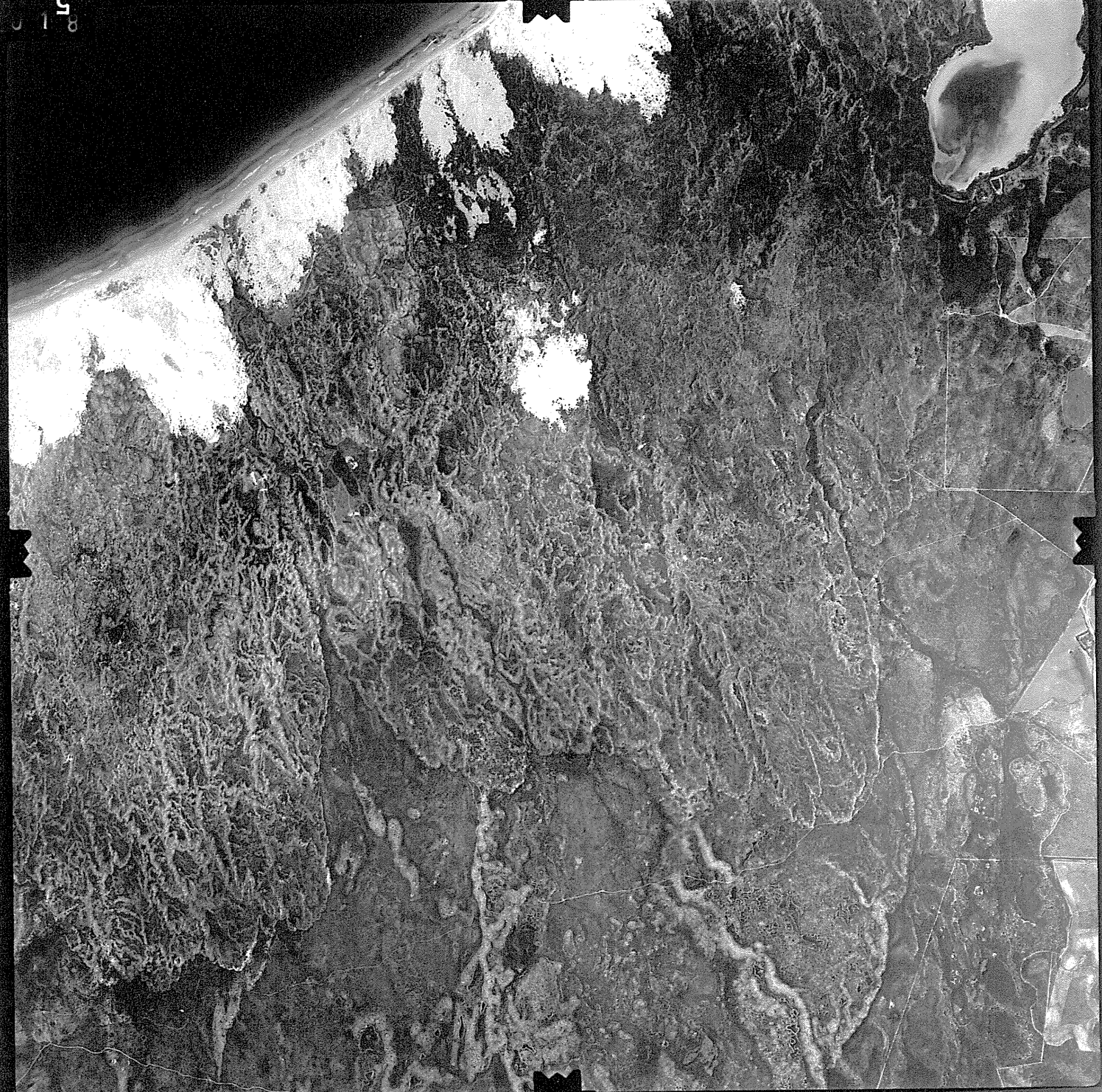
U 1 /



5018

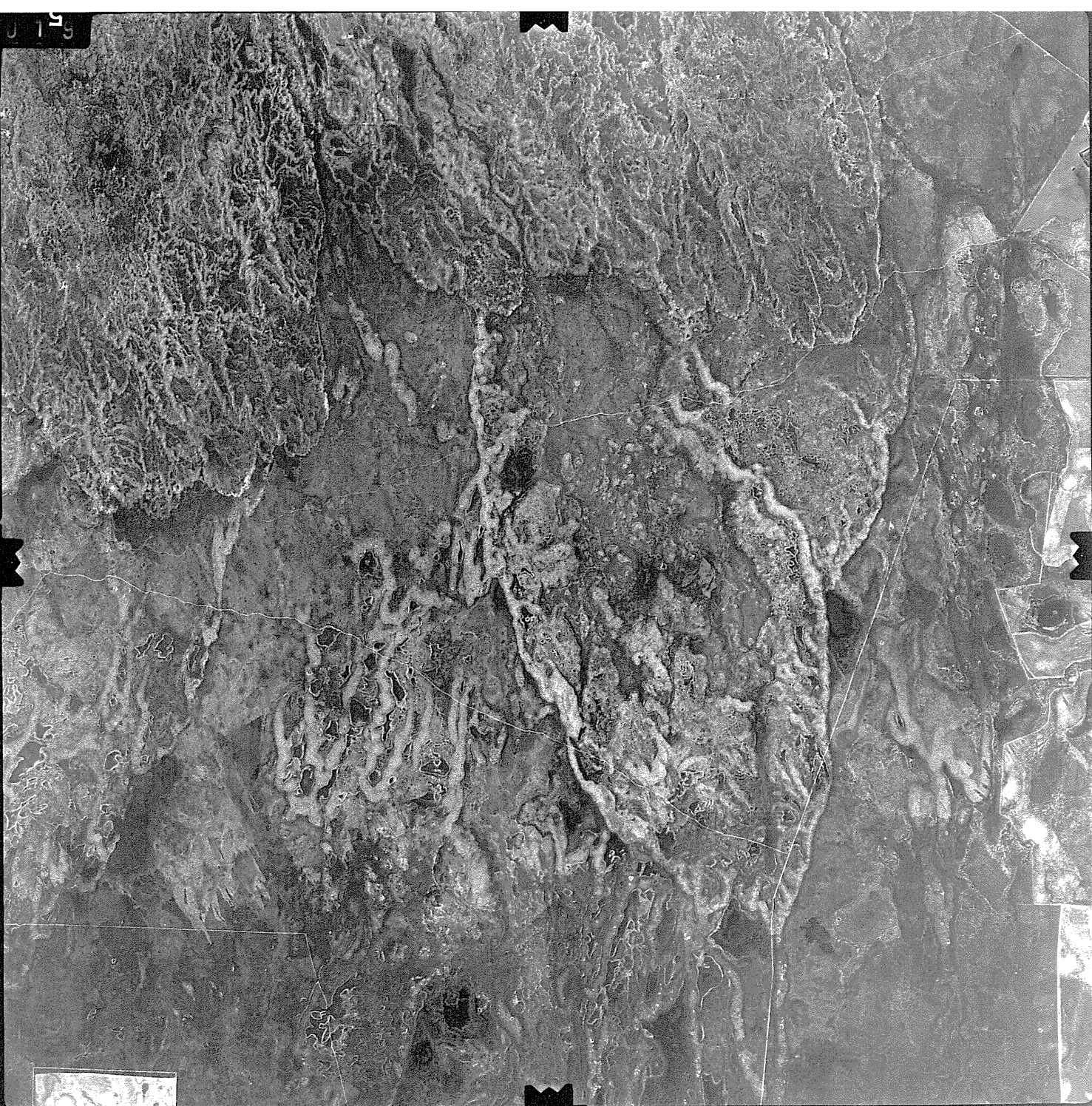
WA 1144 ESPERANCE Run 15 (5001-5043) 20,000' 152.56mm 15.4.69 Proj G 70 -

518



5019

WA 1144 ESPERANCE Run 15 (5001-5043) 20,000' 152.56mm 15.4.69 Proj 0 70 -



5020

WA 1144 ESPERANCE Run 15 (5001-5043) 20,000' 152.56mm 15.4.69 Proj 0 70 -



5165 WA 1140 ESPERANCE Run 16 (5136-5172) 20,000' 152.92mm 7.3.69 Proj G 70 ←

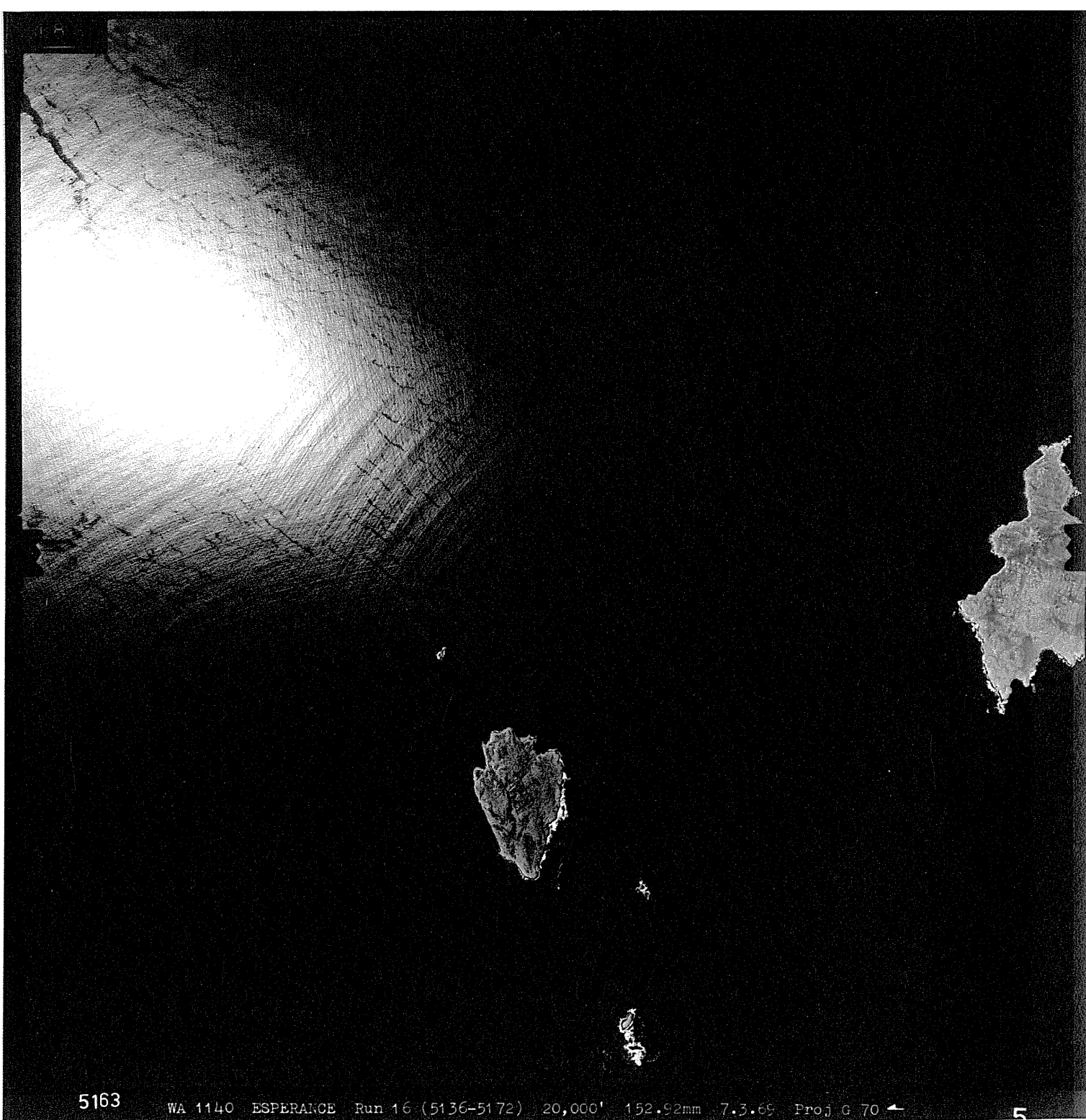
18



5164

WA 1140 ESPERANCE Run 16 (5136-5172) 20,000' 152.92mm 7.3.69 Proj G 70 ←

5



5163

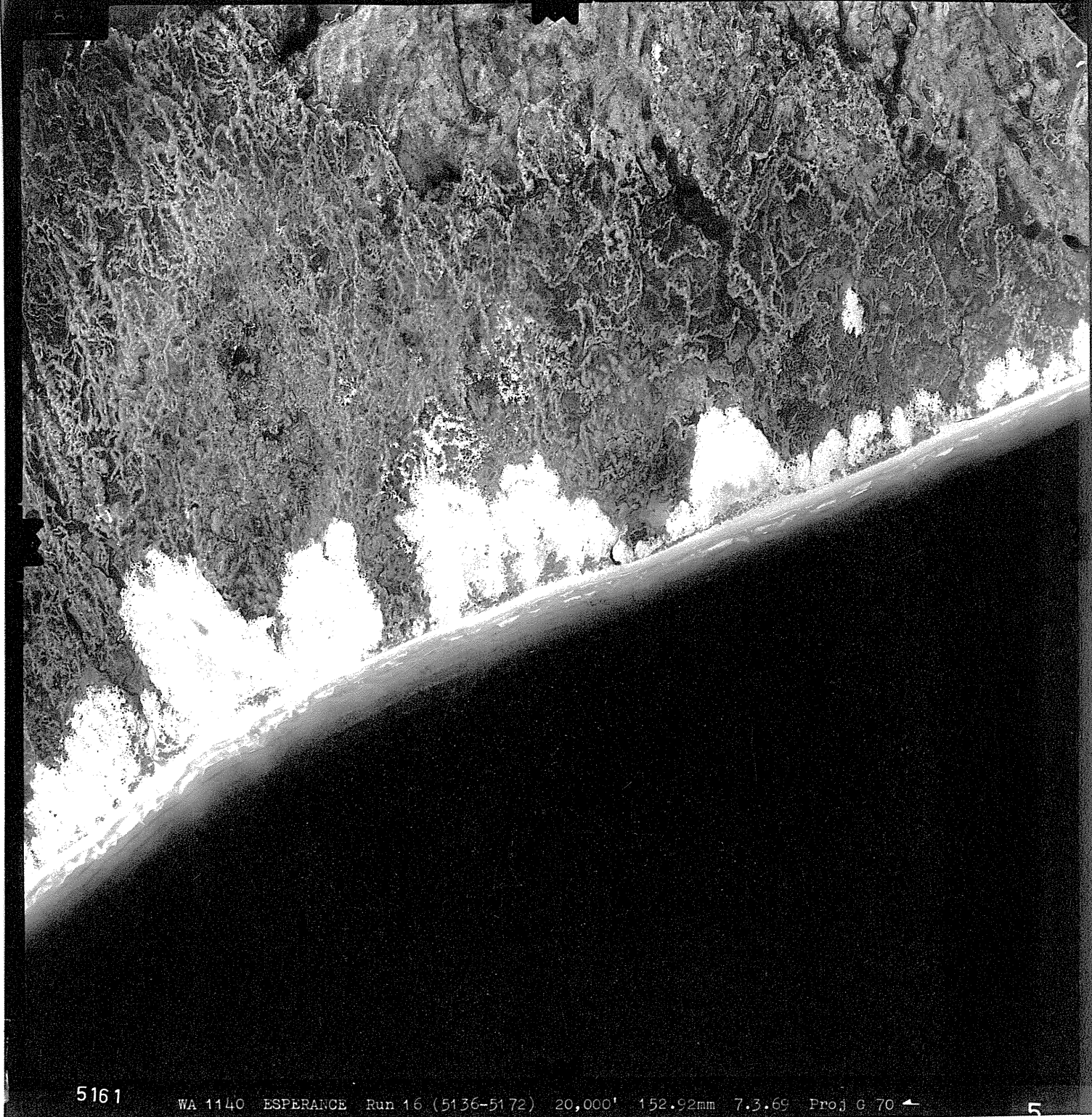
WA 1140 ESPERANCE Run 16 (5136-5172) 20,000' 152.92mm 7.3.69 Proj G 70 ←



5162

WA 1140 ESPERANCE Run 16 (5136-5172) 20,000' 152.92mm 7.3.69 Proj G 70 ←

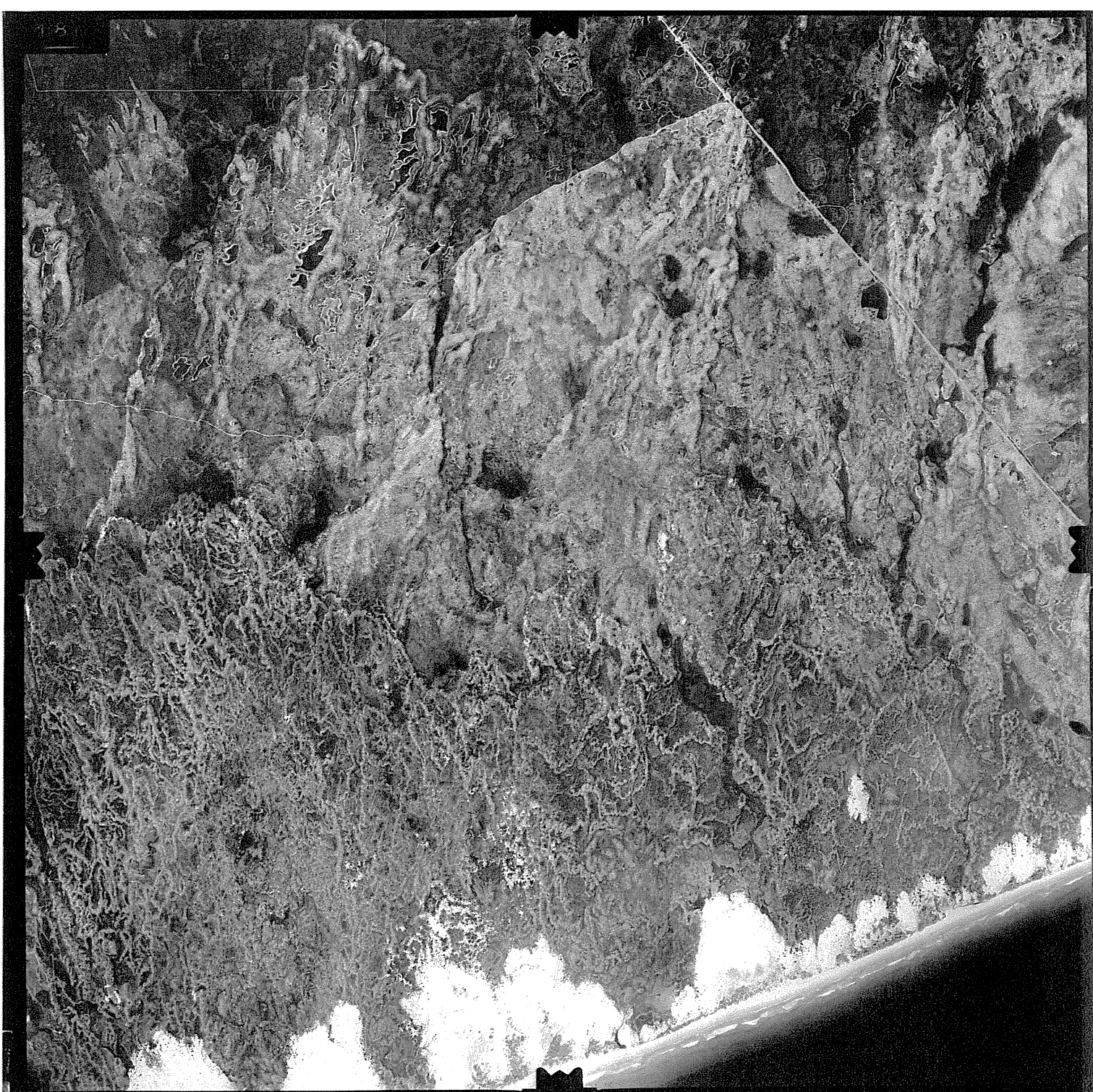
5



5161

WA 1140 ESPERANCE Run 16 (5136-5172) 20,000' 152.92mm 7.3.69 Proj G 70 ←

5



5160

WA 1140 ESPERANCE Run 16 (5136-5172) 20,000' 152.92mm 7.3.69 Proj G 70 ←

5