

**BIRDS, BULL-CATCHING AND ABC TV
ON ROEBUCK PLAINS STATION,
WEST KIMBERLEY, 7-8 JULY 1982**



RESEARCH MATERIALS CONSOLIDATION REPORT

NOT TO BE DISTRIBUTED OR RELEASED

**JAK LANE
WA Department of Environment & Conservation**

AUGUST 2012

Cover photographs: Bull-catching and cattle mustering on Roebuck Plains Station, via Broome, West Kimberley, July 7th-8th, 1982. © JAK Lane.

The purpose of this **Research Materials Consolidation Report (RMCR)** is to create an accessible and lasting record of field observations made and photographs taken by JAK Lane (JL) while he accompanied, in his own time, an Australian Broadcasting Commission (ABC) film crew making a program about bull-catching on Roebuck Plains Station, near Broome, in July 1982.

These few days were essentially a 'rest and recreation' period following several weeks of participation in the June 1982 biological survey of the Buccaneer Archipelago (see that RMCR by JL) and five days spent counting nesting seabirds on the Lacepede Islands with Phil Fuller during the return voyage from the Buccaneers to Broome (see Pelican Nesting on the Lacepede Islands ...' RMCR by JL).

JL's materials are reproduced here in their original form, with limited or no reformatting.

The ABC TV film crew was making the bull-catching program for ABC 'Countrywide'. Doug Murray was the presenter, Brad Pearce the cameraman (I think he was an acquaintance of my Technical Officer Grant Pearson) and I can only assume that Jeff English (whose names appears with the others in my field notes) was the sound recordist.

I spent all of my time just watching proceedings, recording bird species, and maybe doing a little reading, while basking in the sun in an open-topped vehicle out on the Plains. It was a very peaceful and relaxing time. At night we socialised in Broome, where I was staying in a hotel or motel.

I recorded a total of 44 bird species on Roebuck Plains Station (see notes for list). A few of these were not precisely identified (e.g. 'corvid', 'butcher bird', 'plover'). I perhaps didn't have a field guide or binoculars with me, wasn't able to approach closely or was unfamiliar with those species.

My notes suggest I was only out on the Plains for two days (7th and 8th July 1982) but I would have thought it was at least three.

After this time on Roebuck Plains Station I flew home (i.e. to Perth) from Broome on a commercial flight.

PHOTOGRAPHS

Photographs (35mm colour slides) were taken by JL while on the Roebuck Plains in July 1982. These were of the bull-catching and TV program-making activities.

In August 2012, JL electronically scanned (digitised, into BMP file format) these 35mm slides (colour positives). All of these scanned images have been printed in small format in this RMCR and a digital video disc (DVD) of these images is on the inside of the back cover.

The scanned images have been variously labelled (digital filename) with brief descriptions of the subject, location and date on which the photograph was taken and the individual slide numbers as factory-stamped (1-38) and as allocated by JL (3215-3230) (in black 'Box 5' as at 16Aug2012).



Mustering by plane & vehicles.



Muster plane at usual height.



Here, go for my hat, not my thigh.
Bull catcher & Doug Murray.



Drop the bull, then subdue it.



Prepare to drag subdued bull into truck.



Bull-catcher on one end of rope,
bull on the other.



Jeff English?, Brad Pearce & catcher.



Brad Pearce, catcher & Jeff English?



Jeff English? catcher & Doug Murray.



Mustering other cattle by horse and vehicle.

All photos taken on Roebuck Plains Station, 7-8 July 1982. © JAK Lane

SOME LASTING MEMORIES

- Apart from the bull-mustering and bull-catching activity, it was an incredibly peaceful few days out on the Plains, relaxing in the warm sun and relative (to the bustle of city life) solitude.
- At the same time it was very interesting to be with a professional film crew and see how they went about their various tasks (interviewing, filming, sound recording, planning) and to watch the bull-mustering and catching operations – and to watch how the two interacted and came together. Very different personalities (e.g. the suave Doug Murray and the tough catchers) and very different tasks, working effectively together to produce a professional outcome.
- How close to the cattle, trees and ground (and, on one occasion, us) that fixed wing pilot flew! If he had misjudged what he was doing, or the engine had coughed for a moment, he would have been 'into the deck'.
- How tough that bull-catching was – on vehicles, men and bulls.

SOME THINGS TO FOLLOW UP

- Check personal diary and travel claims (for the Buccaneer Archipelago and Lacepede Islands work) to determine when I returned to Perth from Broome, i.e. from the Roebuck Plains.
- Obtain a copy of the broadcast program (enquire using key words: Countrywide, bull-catching, Roebuck Plains, Kimberley, Broome, Doug Murray, ABC TV, July 1982).

CONTENTS

1. Maps and map enlargement of the West Kimberley, including Roebuck Plains, Broome and the Lacepede Islands.
2. Google Earth images (downloaded 16th Aug 2012) of the West Kimberley (including Roebuck Plains, Broome, Lacepede Islands and Buccaneer Archipelago) and of Roebuck Plains.
3. Copy of JL's field notes of 7th-8th July, 1982, made while enjoying some 'time-in lieu' on Roebuck Plains Station after the June 1982 biological survey of the Buccaneer Archipelago and five days on the Lacepede Islands counting nesting seabirds.
4. Small prints of the photographs that JL took while on Roebuck Plains Station in July 1982. There is a DVD of these photos in a pocket on the inside of the back cover of this RMCR (if not, obtain from JL's office computer hard drive or backups thereof).

**Maps and map enlargement of the West Kimberley, including
Roebuck Plains, Broome and the Lacepede Islands.**

Community (A7)
Bookings essential. A permit is required to visit the community - report to the office during the week and the craft shop on weekends. Ph (08) 9192 4936, www.ibizva.com/lombadina

Cape Leveque
Kooljaman Resort
Bookings essential. Ph (08) 9192 4970, www.kooljaman.com.au

Lombadina/Djarindin
Fuel not available weekends

Middle Lagoon
Camping Area
day visitor fee applies
Ph (08) 9192 4002

Beagle Bay (C7)
Visitors must call in to the community office and pay an entry fee before proceeding to the church.
Community office ph (08) 9192 4913

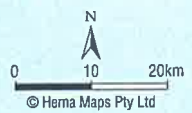
Chinatown, Cable Beach, Gantheaume Point, museums, Sun Pictures, cemeteries, Broome Bird Observatory, Willie Creek Pearl Farm, Crocodile Park, golf course and art galleries. Broome Visitor Information Centre, ph (08) 9192 2222, www.broomevisitorcentre.com.au

Broome Caravan Park
Broome Vacation Village
Cable Beach Caravan Park
Palm Grove Caravan Resort
Roebuck Bay Caravan Park

Roebuck
Broome Bird Observatory
Ph (08) 9193 5600

Port Smith Caravan Park
Ph (08) 9192 4983
www.portsmithcaravanpark.com.au

Community Office
Ph (08) 9192 4962
no fuel Sundays



ntal
me,
andy
dens
and
n

IAN

C E A N

sh)
S



Dotted Creek
Camping Area



Cape Boileau

CAPE
RD

Ph (08) 9192 1880



Roebuck Plains
Roadhouse

Willie Creek
Camping Area



'(abandoned)' Waterbank'
'Coconut Well'
Goolarabooloo
Cable Beach

50

Broome

Gantheaume Bay
Gantheaume Point



Entrance Point

Broome Bird
Observatory
Ph (08) 9193 5600

Roebuck Bay



Broome Bird
Observatory

Roebuck
Plains

Bush Point
Sandy Point

Racehorse Plains

NORTHERN

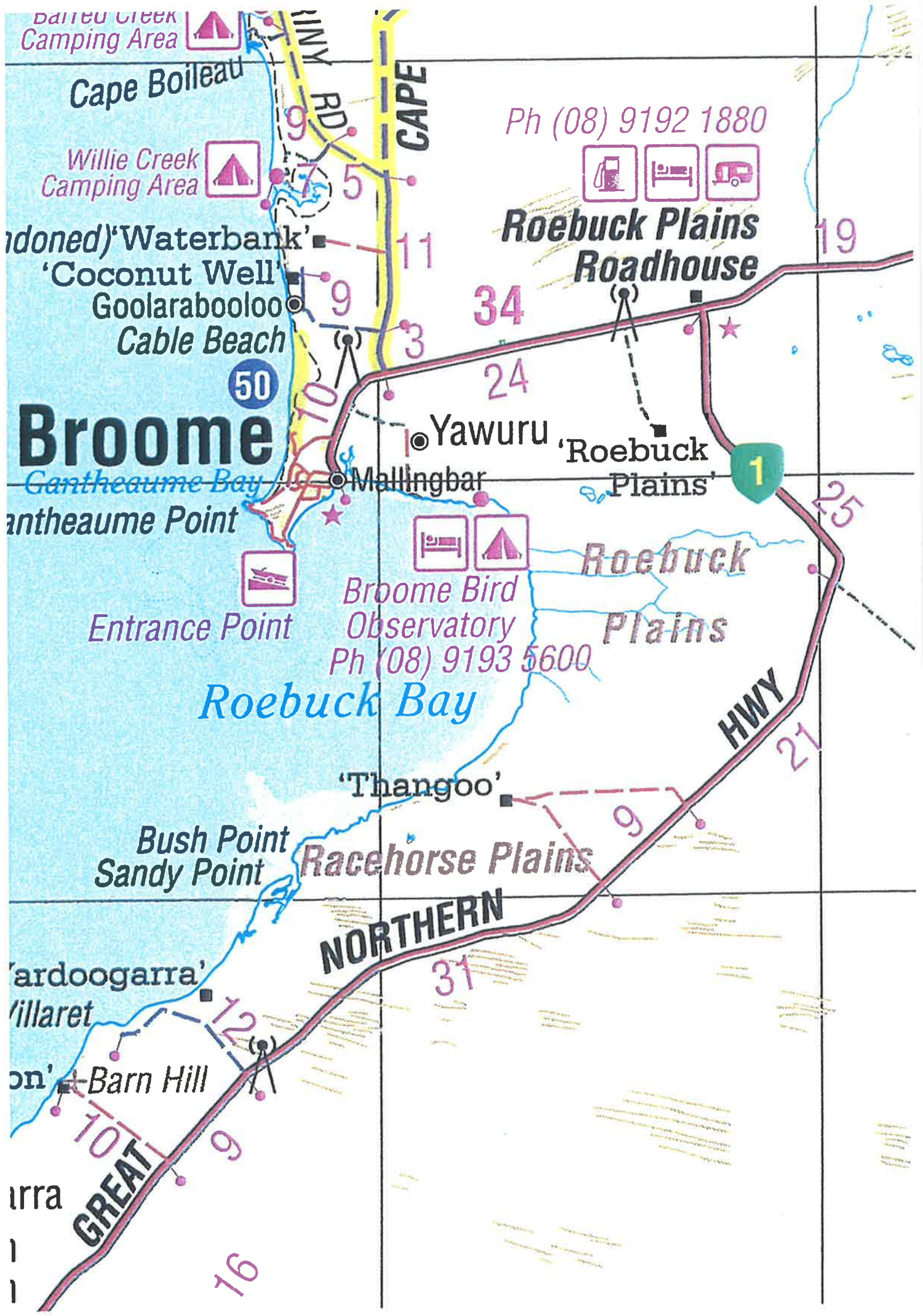
'Wardoogarra'
'Willaret'

'Barn Hill'

'Wardoogarra'

GREAT

HWY



Google Earth images (downloaded 16th Aug 2012) of the West Kimberley (including Roebuck Plains, Broome, Lacepede Islands and Buccaneer Archipelago) and of Roebuck Plains.



Roebuck Plains, Lacedpede Islands and the Buccaneer Archipelago.



Roebuck Plains (and Roebuck Bay, Gantheaume Point and Broome).

Copy of JL's field notes of 7th-8th July, 1982, made while enjoying some 'time-in lieu' on Roebuck Plains Station after the June 1982 biological survey of the Buccaneer Archipelago and five days on the Lacepede Islands counting nesting seabirds.

Blading of Channel from
East Island of Home to

Red Bluff on northeast

to 140°

Chicks	Sit Adults	Chicks	Sit Adults
48	2		
26	3	200	4
32	1	100	7
17	5	100	4
92	4	100	5
75	5	100	2
200	20	100	2
200		106	2
135		100	5
152		100	2
33		100	2
977		100	2
		100	2
		100	2
		100	2
		100	2
		172	10

Borne

7 JULY 82

Roebuck Plains Station - Campyland 1988
Glen Mac Donald - Manager. Sean.

Northern Kestrel

Brown Noddy

Black Kestrel

Lesser Frigate

White breasted Wood Swallow

Fairy Tern

Sea Lark

Spotted Noddy - number

Crested Gull

Marsh Tern

Bristle-throated Noddy

Brown Falcon

Huge-t. Eagle

Magpie Lark

Fringebird

Tobler

Strolche

Straw-necked Ibis

Pelican

White-f. Heron

Pacific Heron

Osprey Ibis

Plover

Whistling Eagle

Pink Stilt

Falcons

~~Willet~~ Willet

Black-f. Coot

Willet

Magpie

Pipit

Crow

Great Horned Owl

Red Wood Pecker

Thrush 8/1

Red-c. Plover

Gray Tattler

Black Stilt

W. Sandpiper

Pink-eyed Stilt

Coot

Red-tailed Tattler

White-footed Heron

Pomarine Skua

Royal Wren

Tell English Bond Pierce Dong Mung.

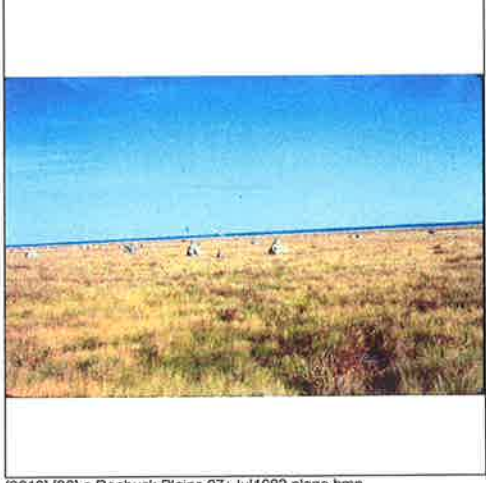
Small prints of the photographs that JL took while on Roebuck Plains Station in July 1982. There is a DVD of these photos in a pocket on the inside of the back cover of this RMCR (if not, obtain from JL's office computer hard drive or backups thereof).



[3215] [29] a Roebuck Plains 07+Jul1982 plane.bmp



[3215] [29] b Roebuck Plains 07+Jul1982 plane.bmp



[3216] [30] a Roebuck Plains 07+Jul1982 plane.bmp



[3216] [30] b Roebuck Plains 07+Jul1982 plane.bmp



[3217] [31] a Roebuck Plains 07+Jul1982 bull cathng.bmp



[3217] [31] b Roebuck Plains 07+Jul1982 bull cathng.bmp



[3217] [31] c Roebuck Plains 07+Jul1982 bull cathng.bmp



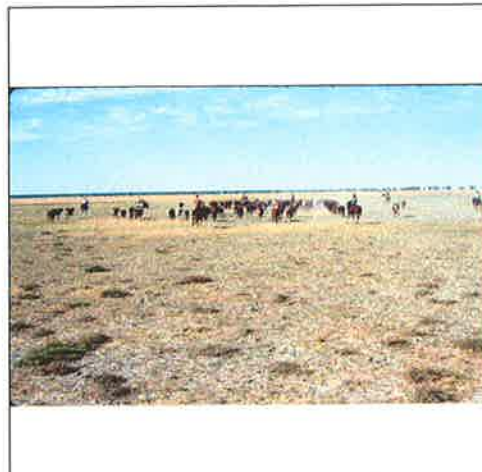
[3218] [32] Roebuck Plains 07+Jul1982 bull cathng.bmp



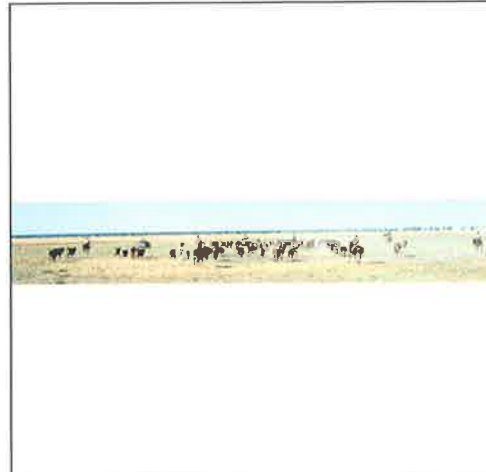
[3219] [33] a Roebuck Plains 07+Jul1982 bull cathng.bmp



[3219] [33] b Roebuck Plains 07+Jul1982 bull cathng.bmp



[3220] [34] a Roebuck Plains 07+Jul1982 mustrng.bmp



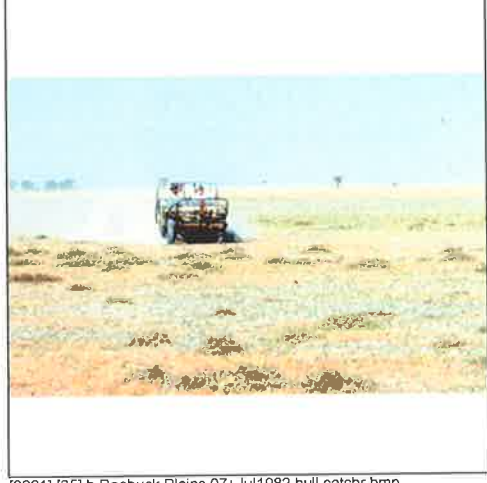
[3220] [34] b Roebuck Plains 07+Jul1982 mustrng.bmp



[3220] [34] c Roebuck Plains 07+Jul1982 mustrng.bmp



[3221] [35] a Roebuck Plains 07+Jul1982 ABC flimg.bmp



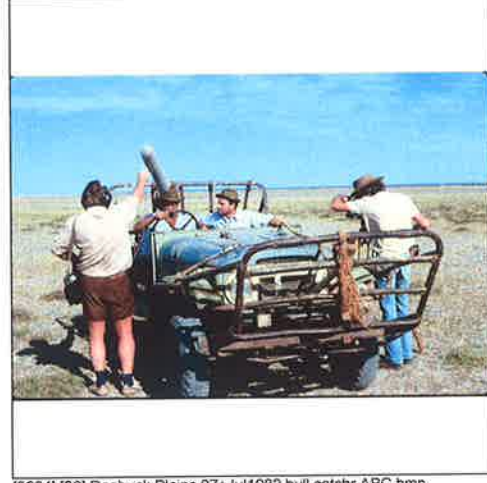
[3221] [35] b Roebuck Plains 07+Jul1982 bull catchr.bmp



[3222] [36] Roebuck Plains 07+Jul1982 bull catchr ABC.bmp



[3223] [37] Roebuck Plains 07+Jul1982 bull catchr ABC.bmp



[3224] [38] Roebuck Plains 07+Jul1982 bull catchr ABC.bmp



[3225] [01] Roebuck Plains 07+Jul1982 bull catchr ABC.bmp



[3226] [01] a Roebuck Plains 07+Jul1982 bull catchr ABC.bmp



[3226] [01] b Roebuck Plains 07+Jul1982 bull catchr ABC.bmp



[3227] [02] a Roebuck Plains 07+Jul1982 mustrng.bmp



[3227] [02] b Roebuck Plains 07+Jul1982 mustrng.bmp



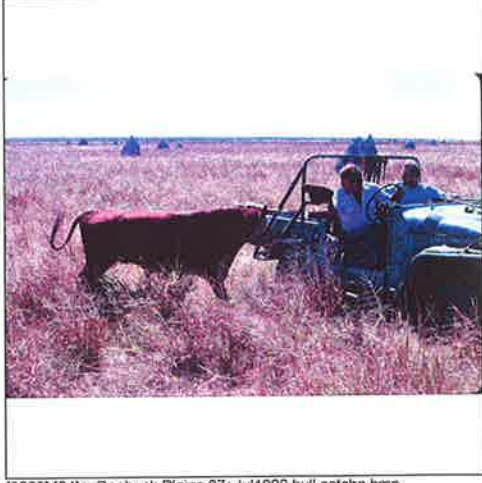
[3227] [02] c Roebuck Plains 07+Jul1982 mustrng.bmp



[3228] [03] a Roebuck Plains 07+Jul1982 mustrng.bmp



[3228] [03] b Roebuck Plains 07+Jul1982 mustrng.bmp



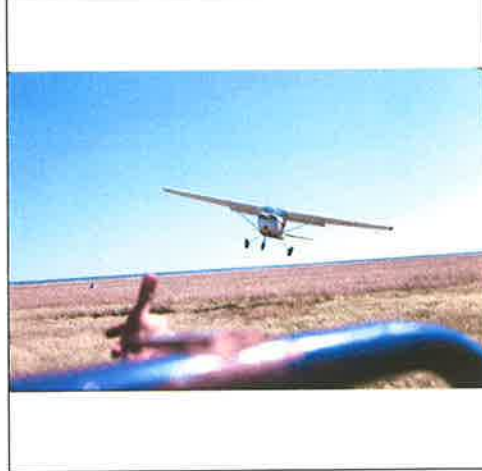
[3229] [04] a Roebuck Plains 07+Jul1982 bull catchn.bmp



[3229] [04] b Roebuck Plains 07+Jul1982 bull catchn.bmp



[3229] [04] c Roebuck Plains 07+Jul1982 bull catchn.bmp



[3230] [05] a Roebuck Plains 07+Jul1982 plane mustrng.bmp



[3230] [05] b Roebuck Plains 07+Jul1982 plane mustrng.JPG