

\*SHOW: South West Flora Character List Revised 29 October 1993

\*CHARACTER LIST

ms 30/11

#1. <supra group>/

1. fern/
2. cycad/
3. conifer/
4. monocot/
5. dicot/

#2. <origin> <whether native to SW region>/

1. native/
2. naturalised/

#3. <Beard subdistrict> <Western Australian South-west Province, Darling District>/

1. Dale Division/
2. Drummond Division/
3. Menzies Division/
4. Warren Division/

#4. <National Parks> <voucher specimens available>/

1. Leeuwin-Naturaliste/
2. Scott River/
3. D'entrecasteaux/
4. Beedelup/
5. Warren/
6. Shannon/
7. Mt Frankland/
8. Walpole-Nornalup/
9. William Bay/
10. West Cape Howe/
11. Torndirrup/

#5. <National Parks> <voucher specimens not available>/

1. Leeuwin-Naturaliste/
2. Scott River/
3. D'entrecasteaux/
4. Beedelup/
5. Warren/
6. Shannon/
7. Mt Frankland/
8. Walpole-Nornalup/
9. William Bay/
10. West Cape Howe/
11. Torndirrup/

#6. flowers <flowering period>/

1. January/
2. February/
3. March/
4. April/
5. May/
6. June/
7. July/
8. August/
9. September/

10. October/

11. November/

12. December/

#7. <vegetation type>/

1. coastal heath/

2. swamp/

3. shrubland/

4. woodland/

5. karri forest/

6. jarrah forest/

7. other/

8. heath <not coastal>/

9. granite rocks/

#8. <text> <date> compiled/

5 NOV 93

#9. <C> <5> <plant> <habit>/

1. tree/

2. tree-like/

3. shrub/

4. climber/

5. herb/

6. grass-like/

7. <other, specify>/

#10. <19> <plant> <longevity in herbs>/

1. annual/

2. biennial/

3. perennial/

#11. <C> <541> <plant> <height, m, including inflorescence>/  
m high/ 0-5m

#12. <29?> <plant> <whether aquatic or terrestrial>/

1. aquatic <hydrophytic>/

2. terrestrial <implicit>/

#13. <30> <hydrophytic habit>/

1. marine/

2. non-marine/

#14. <32> leaves <of rooted hydrophytes> <habit>/

1. submerged/

2. emergent/

3. floating/

#15. <C> <12> leaves <including phyllodes, presence>/

1. present <implicit>/

2. much reduced/

3. absent/

#16. leaves <whether fasciculate>/

1. fasciculate/

2. not fasciculate <implicit>/

#17. <36> leaves <insertion, score "scattered; crowded" as U, with comment>/

1. alternate/

- 2. opposite/
- 3. whorled/

#18. <37> leaves <phyllotaxy, when alternate>/

- 1. spiral/
- 2. distichous/
- 3. 4-ranked/
- 4. 3-ranked <tristichous>/

#19. leaves <opposite, whether decussate>/

- 1. decussate/
- 2. not decussate <implicit>/

#20. <64?> stipule <presence>/

- 1. present <well developed, leaves stipulate>/
- 2. absent <or much reduced, leaves exstipulate>/

*<sheath joining opposite leaf bases>*

#21. <42> leaves <whether petiolate>/

- 1. petiolate/
- 2. subsessile/
- 3. sessile/
- 4. perfoliate/

#22. <C> <542> leaves <total leaf length, mm>/

mm long/ 12-38

#23. <C> <543> leaves <total leaf width, mm>/

mm wide/ 1.5-6

#24. <C> <50> leaves <whether simple or compound>/

- 1. simple <implicit>/
- 2. compound/

#25. <56> <simple leaves> blade <dissection>/

- 1. dissected/
- 2. entire <apart from margin>/

#26. <simple leaves> <shape> <ref: Flora of the Perth Region>/

- 1. narrowly elliptic/ to
- 2. elliptic/
- 3. broadly elliptic/
- 4. circular elliptic/
- 5. transversely broadly elliptic/
- 6. transversely elliptic/
- 7. narrowly oblong/
- 8. oblong/
- 9. broadly oblong/
- 10. square/
- 11. transversely broadly oblong/
- 12. transversely oblong/
- 13. narrowly rhombic/
- 14. rhombic/
- 15. broadly rhombic/
- 16. quadrate/
- 17. transversely broadly rhombic/
- 18. transversely rhombic/
- 19. narrowly ovate/
- 20. ovate/

21. broadly ovate/
22. very broadly ovate/
23. depressed ovate/
24. narrowly obovate/
25. obovate/
26. broadly obovate/
27. very broadly obovate/
28. depressed obovate/
29. narrowly trullate/
30. trullate/
31. broadly trullate/
32. very broadly trullate/
33. depressed trullate/
34. narrowly obtrullate/
35. obtrullate/
36. broadly obtrullate/
37. very broadly obtrullate/
38. depressed obtrullate/
39. narrowly triangular/
40. triangular/
41. broadly triangular/
42. deltate/
43. shallowly triangular/
44. narrowly obtriangular/
45. obtriangular/
46. broadly obtriangular/
47. obdeltate/
48. shallowly obtriangular/
49. linear/
50. subulate/
51. <other - specify>/
52. filiform/

#27. <simple leaves> <whether twisted>/

1. twisted/
2. not twisted/

#28. <simple leaves> margins <whether ciliate>/

1. ciliate/
2. not ciliate/

#29. <39?> <leaves> blade <mature form>/

1. flat/
2. folded lengthwise/
3. concave/
4. convex/
5. involute/
6. revolute/
7. terete/
8. semi-terete/
9. 3-angled/
10. 4-angled/
11. compressed/

#30. <71?> <simple leaves> margins/

1. entire/
2. crenate/
3. serrate/

- 4. dentate/
- 5. denticulate/

#31. <542> <simple leaves> blade <length, mm>/  
mm long/ 12-38

#32. <543> <simple leaves> blade <width, mm>/  
mm wide/ 1-5-6

#33. <53> leaves <compound form>/

- 1. unifoliate/
- 2. ternate/
- 3. pinnate/
- 4. palmate/
- 5. bipinnate/
- 6. multipinnate <multiply compound>/

#34. <compound leaves> <leaflet shape> <ref: Flora of the Perth Region>/

- 1. narrowly elliptic/
- 2. elliptic/
- 3. broadly elliptic/
- 4. circular elliptic/
- 5. transversely broadly elliptic/
- 6. transversely elliptic/
- 7. narrowly oblong/
- 8. oblong/
- 9. broadly oblong/
- 10. square/
- 11. transversely broadly oblong/
- 12. transversely oblong/
- 13. narrowly rhombic/
- 14. rhombic/
- 15. broadly rhombic/
- 16. quadrate/
- 17. transversely broadly rhombic/
- 18. transversely rhombic/
- 19. narrowly ovate/
- 20. ovate/
- 21. broadly ovate/
- 22. very broadly ovate/
- 23. depressed ovate/
- 24. narrowly obovate/
- 25. obovate/
- 26. broadly obovate/
- 27. very broadly obovate/
- 28. depressed obovate/
- 29. narrowly trullate/
- 30. trullate/
- 31. broadly trullate/
- 32. very broadly trullate/
- 33. depressed trullate/
- 34. narrowly obtrullate/
- 35. obtrullate/
- 36. broadly obtrullate/
- 37. very broadly obtrullate/
- 38. depressed obtrullate/
- 39. narrowly triangular/
- 40. triangular/

41. broadly triangular/
42. deltate/
43. shallowly triangular/
44. narrowly obtriangular/
45. obtriangular/
46. broadly obtriangular/
47. obdeltate/
48. shallowly obtriangular/
49. linear/
50. subulate/
51. <other - specify>/
52. filiform/

#35. <compound leaves> <leaflet> margin/

1. entire/
2. crenate/
3. serrate/
4. dentate/
5. denticulate/

#36. <compound leaves> <leaflet margins> <whether ciliate>/

1. ciliate/
2. not ciliate/

#37. <544> <compound leaves> leaflet blade <ultimate length, mm>/  
mm long/

#38. <545> <compound leaves> leaflet blade <ultimate width, mm>/  
mm wide/

#39. <C> <546> flowers <overall inflorescence colour>/

1. green/
2. white/
3. cream/
4. yellow/
5. orange/
6. red/
7. pink/
8. purple/
9. violet/
10. blue/
11. brown/
12. black/
13. other/

#40. flowers <shape> <casual character>/

1. 3-petal/
2. 4-petal/
3. 5-petal/
4. 6-petal/
5. pea flower/
6. wattle/
7. eucalypt/
8. daisy/
9. dandelion-daisy/
10. clustered/
11. other/
12. spikelet/

#41. <C> <175> flowers <arrangement>/

1. solitary/ or
2. aggregated <into inflorescences>/

#42. <C> <176> flowers in <inflorescence type>/

1. cymes/
2. racemes/
3. spikes/
4. heads/
5. umbels/
6. corymbs/
7. fascicles/
8. panicles/
9. verticils/
10. glomerules/
11. catkins/
12. <other - specify>/

#43. <plant sexuality>/

1. hermaphrodite <flowers bisexual, implicit>/
2. monoecious <separate male and female flowers on same plant>/
3. dioecious <plants with either all male or all female flowers>/
4. other <specify>/

#44. <186> <flowers> bracts <whether bracteate>/

1. present/
2. absent/

#45. <188> <flowers> bracteoles <whether bracteolate>/

1. present/
2. absent/

#46. <207?> floral whorls <presence or absence of perianth>/

1. two distinct whorls <calyx and corolla>/
2. intergrading calyx to corolla/
3. one whorl only (calyx) = corolla absent/
4. one whorl only (corolla) - calyx absent/
5. one whorl of uncertain origin <floral whorl or perianth>/
6. two whorls of uncertain origin <perianth in monocots>/
7. vestigial <reduced to bracts, scales, bristles, hairs or lodicules>/
8. absent/

#47. <202> floral tube <presence>/

1. present/
2. absent <implicit>/

#48. <219> calyx <number of parts>/ 5

#49. <222> calyx <whether parts joined or free>/

1. free <or almost so> <polysepalous>/
2. of joined and free segments <partially gamosepalous>/
3. joined <gamosepalous>/

#50. calyx <length, mm>/

mm long/ 6-10mm

#51. <236> corolla <number of parts>/ 5

segments/

- #52. <240> corolla <whether parts joined or free>/
1. free <or almost so> <polysepalous>/
  2. of joined and free segments <partially gamosepalous>/
  3. joined <gamosepalous>/
- #53. <246?> corolla <where segments joined, shape>/
1. rotate/
  2. 2-lipped/
  3. campanulate/
  4. tubular/
  5. urceolate/
  6. trumpet-like/
  7. spurred/
  8. ligulate/
  9. lobed/
- #54. <255?> petals <or corolla lobes, whether incised>/
1. deeply bifid/
  2. 2-lobed/
  3. fringed/
  4. entire/
  5. emarginate/
  6. several lobed/
- #55. corolla <length, mm>/  
mm long/ 14-25mm.
- #56. <271> stamens <fertile, number>/ 5
- #57. <269> staminodes <number>/ no
- #58. <265?> stamens <freedom>/
1. free/
  2. fused/
  3. some fused and some free/
- #59. stamens <insertion>/
1. opposite sepals/
  2. opposite petals/
  3. in continuous whorl/
  4. on corolla tube/
  5. in corolla throat/ (alternate to petals)
  6. free from corolla/
- #60. <283?> anthers dehiscent <mechanism>/
1. by pores/
  2. by vertical slits/
  3. by transverse slits/
  4. by valves/
  5. <other, specify>/
- #61. <316> ovary <gynoecium, constitution>/
1. monomerous <of a single carpel>/
  2. apocarpous <of two or more free carpels>/
  3. syncarpous <of two or more fused or partly fused carpels>/



#62. <318> ovary <position>/

1. superior/
2. partly inferior/
3. inferior/

#63. <326> ovary <locule number of syncarpous gynoecia>/  
locular/ 2

#64. <333?> styles <number>/ 1

#65. <336?> styles <insertion>/

1. apical/
2. lateral/
3. gynobasic/

#66. styles <whether simple or branched>/

1. simple/
2. branched/

#67. styles <number of branches>/  
branches/

#68. <?379, 381, 382> fruit <type>/

1. legume/
2. loment/
3. follicle/
4. achene/
5. samara/
6. nut/
7. drupe/
8. berry/
9. mericarps/
10. capsule/
11. silicule/
12. siliqua/
13. caryopsis/
14. <other, specify>/

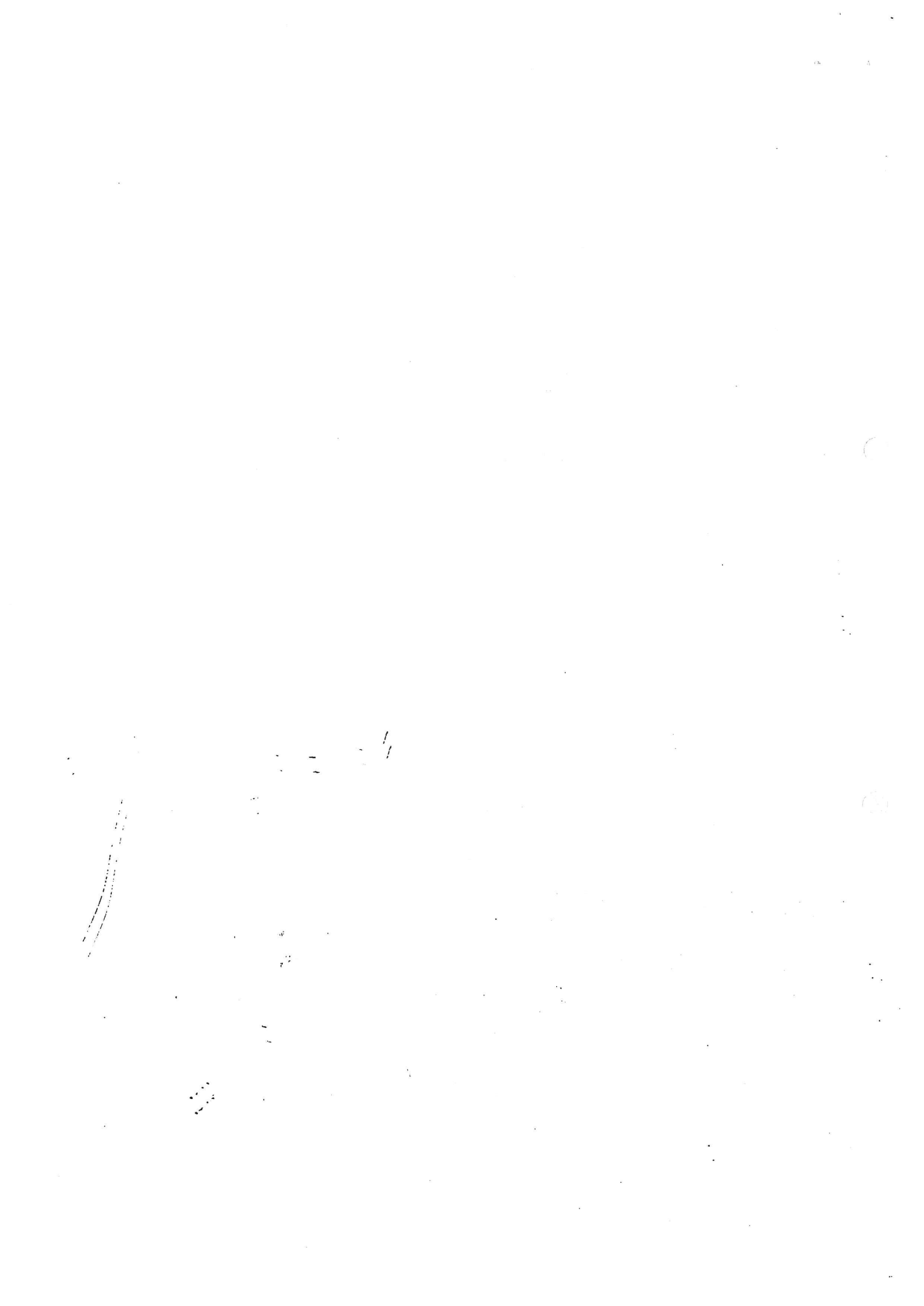
#69. <?378, 380> fruit <whether dehiscent>/

1. dehiscent/
2. indehiscent/

#70. fruit <length, mm>/  
mm long/

#71. fruit <width, mm>/  
mm wide/

#72. <text> <complete description, added only at completion of flora>/



ms 30/11

\*SHOW: South West Flora Character List Revised 29 October 1993

\*CHARACTER LIST

#1. <supra group>/

1. fern/
2. cycad/
3. conifer/
4. monocot/
5. dicot/

#2. <origin> <whether native to SW region>/

1. native/
2. naturalised/

#3. <Beard subdistrict> <Western Australian South-west Province, Darling District>/

1. Dale Division/
2. Drummond Division/
3. Menzies Division/
4. Warren Division/

#4. <National Parks> <voucher specimens available>/

1. Leeuwin-Naturaliste/
2. Scott River/
3. D'entrecasteaux/
4. Beedelup/
5. Warren/
6. Shannon/
7. Mt Frankland/
8. Walpole-Nornalup/
9. William Bay/
10. West Cape Howe/
11. Torndirrup/

#5. <National Parks> <voucher specimens not available>/

1. Leeuwin-Naturaliste/
2. Scott River/
3. D'entrecasteaux/
4. Beedelup/
5. Warren/
6. Shannon/
7. Mt Frankland/
8. Walpole-Nornalup/
9. William Bay/
10. West Cape Howe/
11. Torndirrup/

#6. flowers <flowering period>/

1. January/
2. February/
3. March/
4. April/
5. May/
6. June/
7. July/
8. August/
9. September/

10. October/

11. November/

12. December/

#7. <vegetation type>/

1. coastal heath/

2. swamp/

3. shrubland/

4. woodland/

5. karri forest/

6. jarrah forest/

7. other/

8. heath <not coastal>/

9. granite rocks/

#8. <text> <date> compiled/ 5 NOV 93

#9. <C> <5> <plant> <habit>/

1. tree/

2. tree-like/

3. shrub/

4. climber/

5. herb/

6. grass-like/

7. <other, specify>/

#10. <19> <plant> <longevity in herbs>/

1. annual/

2. biennial/

3. perennial/

#11. <C> <541> <plant> <height, m, including inflorescence>/  
m high/ 0.1 - 0.8 m

#12. <29> <plant> <whether aquatic or terrestrial>/

1. aquatic <hydrophytic>/

2. terrestrial <implicit>/

#13. <30> <hydrophytic habit>/

1. marine/

2. non-marine/

#14. <32> leaves <of rooted hydrophytes> <habit>/

1. submerged/

2. emergent/

3. floating/

#15. <C> <12> leaves <including phyllodes, presence>/

1. present <implicit>/

2. much reduced/

3. absent/

#16. leaves <whether fasciculate>/

1. fasciculate/

2. not fasciculate <implicit>/

<or apparently so>

#17. <36> leaves <insertion, score "scattered; crowded" as U, with comment>/

1. alternate/

- 2. opposite/
- 3. whorled/

#18. <37> leaves <phyllotaxy, when alternate>/

- 1. spiral/
- 2. distichous/
- 3. 4-ranked/
- 4. 3-ranked <tristichous>/

#19. leaves <opposite, whether decussate>/

- 1. decussate/
- 2. not decussate <implicit>/

#20. <64?> stipule <presence>/

- 1. present <well developed, leaves stipulate>/
- 2. absent <or much reduced, leaves exstipulate>/

*< forming a sheath between opposite leaves >*

#21. <42> leaves <whether petiolate>/

- 1. petiolate/
- 2. subsessile/
- 3. sessile/
- 4. perfoliate/

#22. <C> <542> leaves <total leaf length, mm>/

mm long/ 5-9mm ~~1-5mm~~

#23. <C> <543> leaves <total leaf width, mm>/

mm wide/ 1-1.5mm

#24. <C> <50> leaves <whether simple or compound>/

- 1. simple <implicit>/
- 2. compound/

#25. <56> <simple leaves> blade <dissection>/

- 1. dissected/
- 2. entire <apart from margin>/

#26. <simple leaves> <shape> <ref: Flora of the Perth Region>/

- 1. narrowly elliptic/
- 2. elliptic/
- 3. broadly elliptic/
- 4. circular elliptic/
- 5. transversely broadly elliptic/
- 6. transversely elliptic/
- 7. narrowly oblong/
- 8. oblong/
- 9. broadly oblong/
- 10. square/
- 11. transversely broadly oblong/
- 12. transversely oblong/
- 13. narrowly rhombic/
- 14. rhombic/
- 15. broadly rhombic/
- 16. quadrate/
- 17. transversely broadly rhombic/
- 18. transversely rhombic/
- 19. narrowly ovate/
- 20. ovate/

21. broadly ovate/
22. very broadly ovate/
23. depressed ovate/
24. narrowly obovate/
25. obovate/
26. broadly obovate/
27. very broadly obovate/
28. depressed obovate/
29. narrowly trullate/
30. trullate/
31. broadly trullate/
32. very broadly trullate/
33. depressed trullate/
34. narrowly obtrullate/
35. obtrullate/
36. broadly obtrullate/
37. very broadly obtrullate/
38. depressed obtrullate/
39. narrowly triangular/
40. triangular/
41. broadly triangular/
42. deltate/
43. shallowly triangular/
44. narrowly obtriangular/
45. obtriangular/
46. broadly obtriangular/
47. obdeltate/
48. shallowly obtriangular/
49. linear/
50. subulate/
51. <other - specify>/
52. filiform/

#27. <simple leaves> <whether twisted>/

1. twisted/
2. not twisted/

#28. <simple leaves> margins <whether ciliate>/

1. ciliate/
  2. not ciliate/
- <occasionally ciliate>*

#29. <39?> <leaves> blade <mature form>/

1. flat/
2. folded lengthwise/
3. concave/
4. convex/
5. involute/
6. revolute/
7. terete/
8. semi-terete/
9. 3-angled/
10. 4-angled/
11. compressed/

#30. <71?> <simple leaves> margins/

1. entire/
2. crenate/
3. serrate/

4. dentate/
5. denticulate/

#31. <542> <simple leaves> blade <length, mm>/  
mm long/ 5-9 mm

#32. <543> <simple leaves> blade <width, mm>/  
mm wide/ 1-1.5 mm

#33. <53> leaves <compound form>/

1. unifoliolate/
2. ternate/
3. pinnate/
4. palmate/
5. bipinnate/
6. multipinnate <multiply compound>/

#34. <compound leaves> <leaflet shape> <ref: Flora of the Perth Region>/

1. narrowly elliptic/
2. elliptic/
3. broadly elliptic/
4. circular elliptic/
5. transversely broadly elliptic/
6. transversely elliptic/
7. narrowly oblong/
8. oblong/
9. broadly oblong/
10. square/
11. transversely broadly oblong/
12. transversely oblong/
13. narrowly rhombic/
14. rhombic/
15. broadly rhombic/
16. quadrate/
17. transversely broadly rhombic/
18. transversely rhombic/
19. narrowly ovate/
20. ovate/
21. broadly ovate/
22. very broadly ovate/
23. depressed ovate/
24. narrowly obovate/
25. obovate/
26. broadly obovate/
27. very broadly obovate/
28. depressed obovate/
29. narrowly trullate/
30. trullate/
31. broadly trullate/
32. very broadly trullate/
33. depressed trullate/
34. narrowly obtrullate/
35. obtrullate/
36. broadly obtrullate/
37. very broadly obtrullate/
38. depressed obtrullate/
39. narrowly triangular/
40. triangular/

41. broadly triangular/
42. deltate/
43. shallowly triangular/
44. narrowly obtriangular/
45. obtriangular/
46. broadly obtriangular/
47. obdeltate/
48. shallowly obtriangular/
49. linear/
50. subulate/
51. <other - specify>/
52. filiform/

#35. <compound leaves> <leaflet> margin/

1. entire/
2. crenate/
3. serrate/
4. dentate/
5. denticulate/

#36. <compound leaves> <leaflet margins> <whether ciliate>/

1. ciliate/
2. not ciliate/

#37. <544> <compound leaves> leaflet blade <ultimate length, mm>/  
mm long/

#38. <545> <compound leaves> leaflet blade <ultimate width, mm>/  
mm wide/

#39. <C> <546> flowers <overall inflorescence colour>/

1. green/
2. white/
3. cream/
4. yellow/
5. orange/
6. red/
7. pink/
8. purple/
9. violet/
10. blue/
11. brown/
12. black/
13. other/

#40. flowers <shape> <casual character>/

1. 3-petal/
2. 4-petal/
3. 5-petal/
4. 6-petal/
5. pea flower/
6. wattle/
7. eucalypt/
8. daisy/
9. dandelion-daisy/
10. clustered/
11. other/
12. spikelet/



#41. <C> <175> flowers <arrangement>/

1. solitary/
2. aggregated <into inflorescences>/

#42. <C> <176> flowers in <inflorescence type>/

1. cymes/
2. racemes/
3. spikes/
4. heads/
5. umbels/
6. corymbs/
7. fascicles/
8. panicles/
9. verticils/
10. glomerules/
11. catkins/
12. <other - specify>/

#43. <plant sexuality>/

1. hermaphrodite <flowers bisexual, implicit>/
2. monoecious <separate male and female flowers on same plant>/
3. dioecious <plants with either all male or all female flowers>/
4. other <specify>/

#44. <186> <flowers> bracts <whether bracteate>/

1. present/
2. absent/

#45. <188> <flowers> bracteoles <whether bracteolate>/

1. present/
2. absent/

#46. <207?> floral whorls <presence or absence of perianth>/

1. two distinct whorls <calyx and corolla>/
2. intergrading calyx to corolla/
3. one whorl only (calyx) = corolla absent/
4. one whorl only (corolla) - calyx absent/
5. one whorl of uncertain origin <floral whorl or perianth>/
6. two whorls of uncertain origin <perianth in monocots>/
7. vestigial <reduced to bracts, scales, bristles, hairs or lodicules>/
8. absent/

#47. <202> floral tube <presence>/

1. present/
2. absent <implicit>/

#48. <219> calyx <number of parts>/ 5

#49. <222> calyx <whether parts joined or free>/

1. free <or almost so> <polysepalous>/
2. of joined and free segments <partially gamosepalous>/
3. joined <gamosepalous>/

#50. calyx <length, mm>/ 1mm  
mm long/

#51. <236> corolla <number of parts>/ 5

segments/

- #52. <240> corolla <whether parts joined or free>/  
 1. free <or almost so> <polysepalous>/  
 2. of joined and free segments <partially gamosepalous>/  
 3. joined <gamosepalous>/
- #53. <246?> corolla <where segments joined, shape>/  
 1. rotate/  
 2. 2-lipped/  
 3. campanulate/  
 4. tubular/  
 5. urceolate/  
 6. trumpet-like/  
 7. spurred/  
 8. ligulate/  
 9. lobed/
- #54. <255?> petals <or corolla lobes, whether incised>/  
 1. deeply bifid/  
 2. 2-lobed/  
 3. fringed/  
 4. entire/  
 5. emarginate/  
 6. several lobed/
- #55. corolla <length, mm>/ *ca 3 mm*  
 mm long/
- #56. <271> stamens <fertile, number>/ *5*
- #57. <269> staminodes <number>/ *✓*
- #58. <265?> stamens <freedom>/  
 1. free/  
 2. fused/  
 3. some fused and some free/
- #59. stamens <insertion>/  
 1. opposite sepals/  
 2. opposite petals/  
 3. in continuous whorl/  
 4. on corolla tube/  
 5. in corolla throat/ *<alternate with petals>*  
 6. free from corolla/
- #60. <283?> anthers dehiscing <mechanism>/  
 1. by pores/  
 2. by vertical slits/  
 3. by transverse slits/  
 4. by valves/  
 5. <other, specify>/
- #61. <316> ovary <gynoecium, constitution>/  
 1. monomerous <of a single carpel>/  
 2. apocarpous <of two or more free carpels>/  
 3. syncarpous <of two or more fused or partly fused carpels>/

#62. <318> ovary <position>/

1. superior/
2. partly inferior/
3. inferior/

#63. <326> ovary <locule number of syncarpous gynoecia>/  
locular/ 2

#64. <333?> styles <number>/ 1

#65. <336?> styles <insertion>/

1. apical/
2. lateral/
3. gynobasic/

#66. styles <whether simple or branched>/

1. simple/
2. branched/

#67. styles <number of branches>/  
branches/

#68. <?379, 381, 382> fruit <type>/

1. legume/
2. loment/
3. follicle/
4. achene/
5. samara/
6. nut/
7. drupe/
8. berry/
9. mericarps/
10. capsule/
11. silicule/
12. siliqua/
13. caryopsis/
14. <other, specify>/

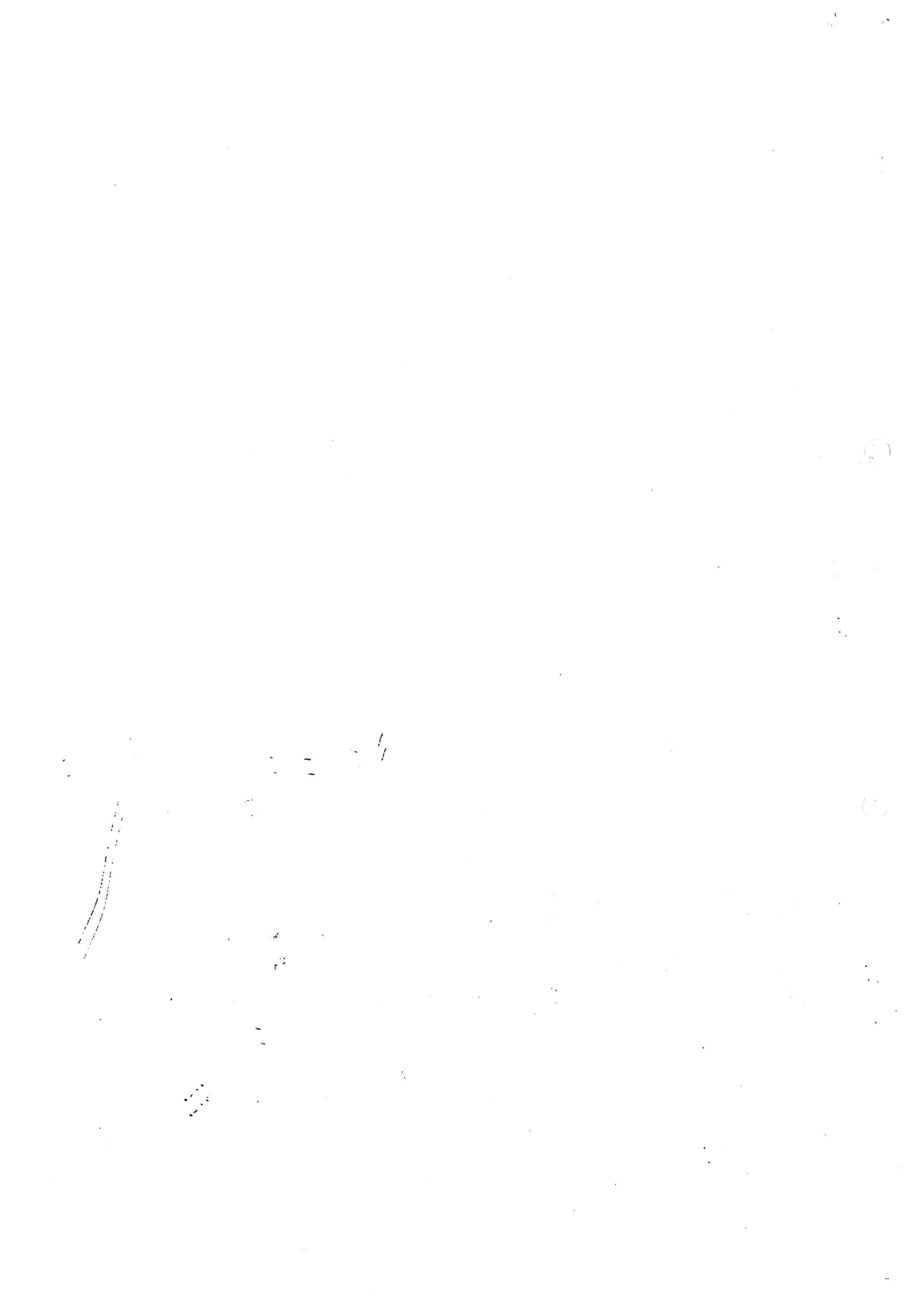
#69. <?378, 380> fruit <whether dehiscent>/

1. dehiscent/
2. indehiscent/

#70. fruit <length, mm>/  
mm long/

#71. fruit <width, mm>/  
mm wide/

#72. <text> <complete description, added only at completion of flora>/



DWS 30/11

\*SHOW: South West Flora Character List Revised 29 October 1993

\*CHARACTER LIST

#1. <supra group>/

- 1. fern/
- 2. cycad/
- 3. conifer/
- 4. monocot/
- 5. dicot/

#2. <origin> <whether native to SW region>/

- 1. native/
- 2. naturalised/

#3. <Beard subdistrict> <Western Australian South-west Province, Darling District>/

- 1. Dale Division/
- 2. Drummond Division/
- 3. Menzies Division/
- 4. Warren Division/

#4. <National Parks> <voucher specimens available>/

- 1. Leeuwin-Naturaliste/
- 2. Scott River/
- 3. D'entrecasteaux/
- 4. Beedelup/
- 5. Warren/
- 6. Shannon/
- 7. Mt Frankland/
- 8. Walpole-Nornalup/
- 9. William Bay/
- 10. West Cape Howe/
- 11. Torndirrup/

#5. <National Parks> <voucher specimens not available>/

- 1. Leeuwin-Naturaliste/
- 2. Scott River/
- 3. D'entrecasteaux/
- 4. Beedelup/
- 5. Warren/
- 6. Shannon/
- 7. Mt Frankland/
- 8. Walpole-Nornalup/
- 9. William Bay/
- 10. West Cape Howe/
- 11. Torndirrup/

#6. flowers <flowering period>/

- 1. January/
- 2. February/
- 3. March/
- 4. April/
- 5. May/
- 6. June/
- 7. July/
- 8. August/
- 9. September/

10. October/

11. November/

12. December/

#7. <vegetation type>/

1. coastal heath/

2. swamp/

3. shrubland/

4. woodland/

5. karri forest/

6. jarrah forest/

7. other/

8. heath <not coastal>/

9. granite rocks/

#8. <text> <date> compiled/ 5 NOV 93

#9. <C> <5> <plant> <habit>/

1. tree/

2. tree-like/

3. shrub/

4. climber/

5. herb/

6. grass-like/

7. <other, specify>/

#10. <19> <plant> <longevity in herbs>/

1. annual/

2. biennial/

3. perennial/

#11. <C> <541> <plant> <height, m, including inflorescence>/  
m high/ 0.1 - 0.2m

#12. <29?> <plant> <whether aquatic or terrestrial>/

1. aquatic <hydrophytic>/

2. terrestrial <implicit>/

#13. <30> <hydrophytic habit>/

1. marine/

2. non-marine/

#14. <32> leaves <of rooted hydrophytes> <habit>/

1. submerged/

2. emergent/

3. floating/

#15. <C> <12> leaves <including phyllodes, presence>/

1. present <implicit>/

2. much reduced/

3. absent/

#16. leaves <whether fasciculate>/

1. fasciculate/

2. not fasciculate <implicit>/

#17. <36> leaves <insertion, score "scattered; crowded" as U, with comment>/

1. alternate/

- 2. opposite/
- 3. whorled/

#18. <37> leaves <phyllotaxy, when alternate>/

- 1. spiral/
- 2. distichous/
- 3. 4-ranked/
- 4. 3-ranked <tristichous>/

#19. leaves <opposite, whether decussate>/

- 1. decussate/
- 2. not decussate <implicit>/

#20. <64?> stipule <presence>/

- 1. present <well developed, leaves stipulate>/ <inconspicuous>
- 2. absent <or much reduced, leaves exstipulate>/

#21. <42> leaves <whether petiolate>/

- 1. petiolate/
- 2. subsessile/
- 3. sessile/
- 4. perfoliate/

#22. <C> <542> leaves <total leaf length, mm>/  
mm long/ 4 - 17 mm

#23. <C> <543> leaves <total leaf width, mm>/  
mm wide/ 2 - 7 mm

#24. <C> <50> leaves <whether simple or compound>/

- 1. simple <implicit>/
- 2. compound/

#25. <56> <simple leaves> blade <dissection>/

- 1. dissected/
- 2. entire <apart from margin>/

#26. <simple leaves> <shape> <ref: Flora of the Perth Region>/

- 1. narrowly elliptic/
- 2. elliptic/
- 3. broadly elliptic/
- 4. circular elliptic/
- 5. transversely broadly elliptic/
- 6. transversely elliptic/
- 7. narrowly oblong/
- 8. oblong/
- 9. broadly oblong/
- 10. square/
- 11. transversely broadly oblong/
- 12. transversely oblong/
- 13. narrowly rhombic/
- 14. rhombic/
- 15. broadly rhombic/
- 16. quadrate/
- 17. transversely broadly rhombic/
- 18. transversely rhombic/
- 19. narrowly ovate/
- 20. ovate/

21. broadly ovate/
22. very broadly ovate/
23. depressed ovate/
24. narrowly obovate/
25. obovate/
26. broadly obovate/
27. very broadly obovate/
28. depressed obovate/
29. narrowly trullate/
30. trullate/
31. broadly trullate/
32. very broadly trullate/
33. depressed trullate/
34. narrowly obtrullate/
35. obtrullate/
36. broadly obtrullate/
37. very broadly obtrullate/
38. depressed obtrullate/
39. narrowly triangular/
40. triangular/
41. broadly triangular/
42. deltate/
43. shallowly triangular/
44. narrowly obtriangular/
45. obtriangular/
46. broadly obtriangular/
47. obdeltate/
48. shallowly obtriangular/
49. linear/
50. subulate/
51. <other - specify>/
52. filiform/

#27. <simple leaves> <whether twisted>/

1. twisted/
2. not twisted/

#28. <simple leaves> margins <whether ciliate>/

1. ciliate/
2. not ciliate/

#29. <39?> <leaves> blade <mature form>/

1. flat/
2. folded lengthwise/
3. concave/
4. convex/
5. involute/
6. revolute/
7. terete/
8. semi-terete/
9. 3-angled/
10. 4-angled/
11. compressed/

#30. <71?> <simple leaves> margins/

1. entire/
2. crenate/
3. serrate/



4. dentate/
5. denticulate/

#31. <542> <simple leaves> blade <length, mm>/  
mm long/ 3-16mm

#32. <543> <simple leaves> blade <width, mm>/  
mm wide/ 2-7mm

#33. <53> leaves <compound form>/

1. unifoliolate/
2. ternate/
3. pinnate/
4. palmate/
5. bipinnate/
6. multipinnate <multiply compound>/

#34. <compound leaves> <leaflet shape> <ref: Flora of the Perth Region>/

1. narrowly elliptic/
2. elliptic/
3. broadly elliptic/
4. circular elliptic/
5. transversely broadly elliptic/
6. transversely elliptic/
7. narrowly oblong/
8. oblong/
9. broadly oblong/
10. square/
11. transversely broadly oblong/
12. transversely oblong/
13. narrowly rhombic/
14. rhombic/
15. broadly rhombic/
16. quadrate/
17. transversely broadly rhombic/
18. transversely rhombic/
19. narrowly ovate/
20. ovate/
21. broadly ovate/
22. very broadly ovate/
23. depressed ovate/
24. narrowly obovate/
25. obovate/
26. broadly obovate/
27. very broadly obovate/
28. depressed obovate/
29. narrowly trullate/
30. trullate/
31. broadly trullate/
32. very broadly trullate/
33. depressed trullate/
34. narrowly obtrullate/
35. obtrullate/
36. broadly obtrullate/
37. very broadly obtrullate/
38. depressed obtrullate/
39. narrowly triangular/
40. triangular/

41. broadly triangular/
42. deltate/
43. shallowly triangular/
44. narrowly obtriangular/
45. obtriangular/
46. broadly obtriangular/
47. obdeltate/
48. shallowly obtriangular/
49. linear/
50. subulate/
51. <other - specify>/
52. filiform/

#35. <compound leaves> <leaflet> margin/

1. entire/
2. crenate/
3. serrate/
4. dentate/
5. denticulate/

#36. <compound leaves> <leaflet margins> <whether ciliate>/

1. ciliate/
2. not ciliate/

#37. <544> <compound leaves> leaflet blade <ultimate length, mm>/  
mm long/

#38. <545> <compound leaves> leaflet blade <ultimate width, mm>/  
mm wide/

#39. <C> <546> flowers <overall inflorescence colour>/

1. green/
2. white/
3. cream/
4. yellow/
5. orange/
6. red/
7. pink/
8. purple/
9. violet/
10. blue/
11. brown/
12. black/
13. other/

#40. flowers <shape> <casual character>/

1. 3-petal/
2. 4-petal/
3. 5-petal/
4. 6-petal/
5. pea flower/
6. wattle/
7. eucalypt/
8. daisy/
9. dandelion-daisy/
10. clustered/
11. other/
12. spikelet/

#41. <C> <175> flowers <arrangement>/

1. solitary/
2. aggregated <into inflorescences>/

#42. <C> <176> flowers in <inflorescence type>/

1. cymes/
2. racemes/
3. spikes/
4. heads/
5. umbels/
6. corymbs/
7. fascicles/
8. panicles/
9. verticils/
10. glomerules/
11. catkins/
12. <other - specify>/ *headlike clusters*

#43. <plant sexuality>/

1. hermaphrodite <flowers bisexual, implicit>/
2. monoecious <separate male and female flowers on same plant>/
3. dioecious <plants with either all male or all female flowers>/
4. other <specify>/

#44. <186> <flowers> bracts <whether bracteate>/

1. present/
2. absent/

#45. <188> <flowers> bracteoles <whether bracteolate>/

1. present/
2. absent/

#46. <207> floral whorls <presence or absence of perianth>/

1. two distinct whorls <calyx and corolla>/
2. intergrading calyx to corolla/
3. one whorl only (calyx) = corolla absent/
4. one whorl only (corolla) - calyx absent/
5. one whorl of uncertain origin <floral whorl or perianth>/
6. two whorls of uncertain origin <perianth in monocots>/
7. vestigial <reduced to bracts, scales, bristles, hairs or lodicules>/
8. absent/

#47. <202> floral tube <presence>/

1. present/
2. absent <implicit>/

#48. <219> calyx <number of parts>/ *5*

#49. <222> calyx <whether parts joined or free>/

1. free <or almost so> <polysepalous>/
2. of joined and free segments <partially gamosepalous>/
3. joined <gamosepalous>/

#50. calyx <length, mm>/

mm long/ *4-5mm*

#51. <236> corolla <number of parts>/ *5*

segments/

- #52. <240> corolla <whether parts joined or free>/
1. free <or almost so> <polysepalous>/
  2. of joined and free segments <partially gamosepalous>/
  3. joined <gamosepalous>/
- #53. <246?> corolla <where segments joined, shape>/
1. rotate/
  2. 2-lipped/
  3. campanulate/
  4. tubular/
  5. urceolate/
  6. trumpet-like/
  7. spurred/
  8. ligulate/
  9. lobed/
- #54. <255?> petals <or corolla lobes, whether incised>/
1. deeply bifid/
  2. 2-lobed/
  3. fringed/
  4. entire/
  5. emarginate/
  6. several lobed/
- #55. corolla <length, mm>/  
mm long/ 5-8mm
- #56. <271> stamens <fertile, number>/ 5
- #57. <269> staminodes <number>/
- #58. <265?> stamens <freedom>/
1. free/
  2. fused/
  3. some fused and some free/
- #59. stamens <insertion>/
1. opposite sepals/
  2. opposite petals/
  3. in continuous whorl/
  4. on corolla tube/
  5. in corolla throat/ <alternate with petals>
  6. free from corolla/
- #60. <283?> anthers dehiscing <mechanism>/
1. by pores/
  2. by vertical slits/
  3. by transverse slits/
  4. by valves/
  5. <other, specify>/
- #61. <316> ovary <gynoecium, constitution>/
1. monomerous <of a single carpel>/
  2. apocarpous <of two or more free carpels>/
  3. syncarpous <of two or more fused or partly fused carpels>/

#62. <318> ovary <position>/

1. superior/
2. partly inferior/
3. inferior/

#63. <326> ovary <locule number of syncarpous gynoecia>/  
locular/ 2

#64. <333?> styles <number>/ |

#65. <336?> styles <insertion>/

1. apical/
2. lateral/
3. gynobasic/

#66. styles <whether simple or branched>/

1. simple/
2. branched/

#67. styles <number of branches>/  
branches/

#68. <?379, 381, 382> fruit <type>/

1. legume/
2. loment/
3. follicle/
4. achene/
5. samara/
6. nut/
7. drupe/
8. berry/
9. mericarps/
10. capsule/
11. silicule/
12. siliqua/
13. caryopsis/
14. <other, specify>/

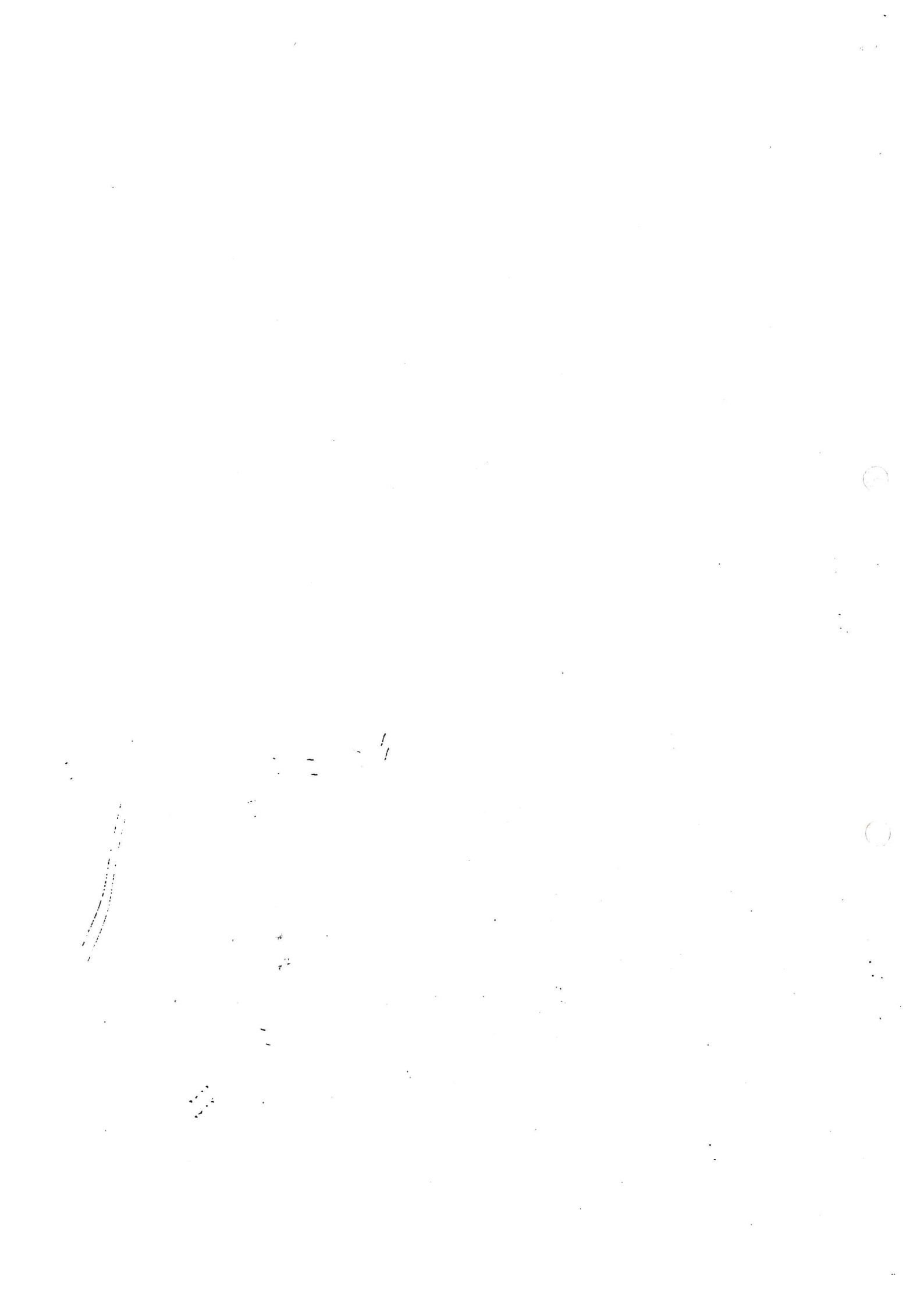
#69. <?378, 380> fruit <whether dehiscent>/

1. dehiscent/
2. indehiscent/

#70. fruit <length, mm>/  
mm long/

#71. fruit <width, mm>/  
mm wide/

#72. <text> <complete description, added only at completion of flora>/



Logania tortuosa D.A. Herbert LOGANIACEAE

SW 30/11

\*SHOW: South West Flora Character List Revised 29 October 1993

\*CHARACTER LIST

#1. <supra group>/

1. fern/
2. cycad/
3. conifer/
4. monocot/
5. dicot/

#2. <origin> <whether native to SW region>/

1. native/
2. naturalised/

<possibly naturalised, normally occurs east of Katanning>

#3. <Beard subdistrict> <Western Australian South-west Province, Darling District>/

1. Dale Division/
2. Drummond Division/
3. Menzies Division/
4. Warren Division/

#4. <National Parks> <voucher specimens available>/

1. Leeuwin-Naturaliste/
2. Scott River/
3. D'entrecasteaux/
4. Beedelup/
5. Warren/
6. Shannon/
7. Mt Frankland/
8. Walpole-Nornalup/
9. William Bay/
10. West Cape Howe/
11. Torndirrup/

#5. <National Parks> <voucher specimens not available>/

1. Leeuwin-Naturaliste/-
2. Scott River/
3. D'entrecasteaux/
4. Beedelup/
5. Warren/
6. Shannon/
7. Mt Frankland/
8. Walpole-Nornalup/
9. William Bay/
10. West Cape Howe/
11. Torndirrup/

#6. flowers <flowering period>/

1. January/
2. February/
3. March/
4. April/
5. May/
6. June/
7. July/
8. August/
9. September/

10. October/

11. November/

12. December/

#7. <vegetation type>/

1. coastal heath/

2. swamp/

3. shrubland/

4. woodland/

5. karri forest/

6. jarrah forest/

7. other/

8. heath <not coastal>/

9. granite rocks/

#8. <text> <date> compiled/ 5 NOV 93

#9. <C> <S> <plant> <habit>/

1. tree/

2. tree-like/

3. shrub/

4. climber/

5. herb/

6. grass-like/

7. <other, specify>/

#10. <19> <plant> <longevity in herbs>/

1. annual/

2. biennial/

3. perennial/

#11. <C> <541> <plant> <height, m, including inflorescence>/  
m high/ 0.4m

#12. <29?> <plant> <whether aquatic or terrestrial>/

1. aquatic <hydrophytic>/

2. terrestrial <implicit>/

#13. <30> <hydrophytic habit>/

1. marine/

2. non-marine/

#14. <32> leaves <of rooted hydrophytes> <habit>/

1. submerged/

2. emergent/

3. floating/

#15. <C> <12> leaves <including phyllodes, presence>/

1. present <implicit>/

2. much reduced/

<scale-like>

3. absent/

#16. leaves <whether fasciculate>/

1. fasciculate/

2. not fasciculate <implicit>/

#17. <36> leaves <insertion, score "scattered; crowded" as U, with comment>/

1. alternate/



2. opposite/

3. whorled/

#18. <37> leaves <phyllotaxy, when alternate>/

1. spiral/

2. distichous/

3. 4-ranked/

4. 3-ranked <tristichous>/

#19. leaves <opposite, whether decussate>/

1. decussate/

2. not decussate <implicit>/

#20. <64?> stipule <presence>/

1. present <well developed, leaves stipulate>/

2. absent <or much reduced, leaves exstipulate>/

<sheathing scales between leaf bases>

#21. <42> leaves <whether petiolate>/

1. petiolate/

2. subsessile/

3. sessile/

4. perfoliate/

#22. <C> <542> leaves <total leaf length, mm>/

mm long/ 1-1.5mm

#23. <C> <543> leaves <total leaf width, mm>/

mm wide/ 1-1.5mm

#24. <C> <50> leaves <whether simple or compound>/

1. simple <implicit>/

2. compound/

#25. <56> <simple leaves> blade <dissection>/

1. dissected/

2. entire <apart from margin>/

#26. <simple leaves> <shape> <ref: Flora of the Perth Region>/

1. narrowly elliptic/

2. elliptic/

3. broadly elliptic/

4. circular elliptic/

5. transversely broadly elliptic/

6. transversely elliptic/

7. narrowly oblong/

8. oblong/

9. broadly oblong/

10. square/

11. transversely broadly oblong/

12. transversely oblong/

13. narrowly rhombic/

14. rhombic/

15. broadly rhombic/

16. quadrate/

17. transversely broadly rhombic/

18. transversely rhombic/

19. narrowly ovate/

20. ovate/

21. broadly ovate/
22. very broadly ovate/
23. depressed ovate/
24. narrowly obovate/
25. obovate/
26. broadly obovate/
27. very broadly obovate/
28. depressed obovate/
29. narrowly trullate/
30. trullate/
31. broadly trullate/
32. very broadly trullate/
33. depressed trullate/
34. narrowly obtrullate/
35. obtrullate/
36. broadly obtrullate/
37. very broadly obtrullate/
38. depressed obtrullate/
39. narrowly triangular/
40. triangular/
41. broadly triangular/
42. deltate/
43. shallowly triangular/
44. narrowly obtriangular/
45. obtriangular/
46. broadly obtriangular/
47. obdeltate/
48. shallowly obtriangular/
49. linear/
50. subulate/
51. <other - specify>/
52. filiform/

#27. <simple leaves> <whether twisted>/

1. twisted/
2. not twisted/

#28. <simple leaves> margins <whether ciliate>/

1. ciliate/
2. not ciliate/

#29. <39?> <leaves> blade <mature form>/

1. flat/
2. folded lengthwise/
3. concave/
4. convex/
5. involute/
6. revolute/
7. terete/
8. semi-terete/
9. 3-angled/
10. 4-angled/
11. compressed/

#30. <71?> <simple leaves> margins/

1. entire/
2. crenate/
3. serrate/

- 4. dentate/
- 5. denticulate/

#31. <542> <simple leaves> blade <length, mm>/  
mm long/ 1-1.5mm

#32. <543> <simple leaves> blade <width, mm>/  
mm wide/ 1-1.5mm

#33. <53> leaves <compound form>/

- 1. unifoliolate/
- 2. ternate/
- 3. pinnate/
- 4. palmate/
- 5. bipinnate/
- 6. multipinnate <multiply compound>/

#34. <compound leaves> <leaflet shape> <ref: Flora of the Perth Region>/

- 1. narrowly elliptic/
- 2. elliptic/
- 3. broadly elliptic/
- 4. circular elliptic/
- 5. transversely broadly elliptic/
- 6. transversely elliptic/
- 7. narrowly oblong/
- 8. oblong/
- 9. broadly oblong/
- 10. square/
- 11. transversely broadly oblong/
- 12. transversely oblong/
- 13. narrowly rhombic/
- 14. rhombic/
- 15. broadly rhombic/
- 16. quadrate/
- 17. transversely broadly rhombic/
- 18. transversely rhombic/
- 19. narrowly ovate/
- 20. ovate/
- 21. broadly ovate/
- 22. very broadly ovate/
- 23. depressed ovate/
- 24. narrowly obovate/
- 25. obovate/
- 26. broadly obovate/
- 27. very broadly obovate/
- 28. depressed obovate/
- 29. narrowly trullate/
- 30. trullate/
- 31. broadly trullate/
- 32. very broadly trullate/
- 33. depressed trullate/
- 34. narrowly obtrullate/
- 35. obtrullate/
- 36. broadly obtrullate/
- 37. very broadly obtrullate/
- 38. depressed obtrullate/
- 39. narrowly triangular/
- 40. triangular/

41. broadly triangular/  
42. deltate/  
43. shallowly triangular/  
44. narrowly obtriangular/  
45. obtriangular/  
46. broadly obtriangular/  
47. obdeltate/  
48. shallowly obtriangular/  
49. linear/  
50. subulate/  
51. <other - specify>/  
52. filiform/

#35. <compound leaves> <leaflet> margin/

1. entire/
2. crenate/
3. serrate/
4. dentate/
5. denticulate/

#36. <compound leaves> <leaflet margins> <whether ciliate>/

1. ciliate/
2. not ciliate/

#37. <544> <compound leaves> leaflet blade <ultimate length, mm>/  
mm long/

#38. <545> <compound leaves> leaflet blade <ultimate width, mm>/  
mm wide/

#39. <C> <546> flowers <overall inflorescence colour>/

1. green/
2. white/
3. cream/
4. yellow/
5. orange/
6. red/
7. pink/
8. purple/
9. violet/
10. blue/
11. brown/
12. black/
13. other/

#40. flowers <shape> <casual character>/

1. 3-petal/
2. 4-petal/
3. 5-petal/
4. 6-petal/
5. pea flower/
6. wattle/
7. eucalypt/
8. daisy/
9. dandelion-daisy/
10. clustered/
11. other/
12. spikelet/

#41. <C> <175> flowers <arrangement>/

1. solitary/
2. aggregated <into inflorescences>/

#42. <C> <176> flowers in <inflorescence type>/

1. cymes/
2. racemes/
3. spikes/
4. heads/
5. umbels/
6. corymbs/
7. fascicles/
8. panicles/
9. verticils/
10. glomerules/
11. catkins/
12. <other - specify>/

#43. <plant sexuality>/

1. hermaphrodite <flowers bisexual, implicit>/
2. monoecious <separate male and female flowers on same plant>/
3. dioecious <plants with either all male or all female flowers>/
4. other <specify>/

#44. <186> <flowers> bracts <whether bracteate>/

1. present/
2. absent/

#45. <188> <flowers> bracteoles <whether bracteolate>/

1. present/
2. absent/

#46. <207?> floral whorls <presence or absence of perianth>/

1. two distinct whorls <calyx and corolla>/
2. intergrading calyx to corolla/
3. one whorl only (calyx) =corolla absent/
4. one whorl only (corolla) -calyx absent/
5. one whorl of uncertain origin <floral whorl or perianth>/
6. two whorls of uncertain origin <perianth in monocots>/
7. vestigial <reduced to bracts, scales, bristles, hairs or lodicules>/
8. absent/

#47. <202> floral tube <presence>/

1. present/
2. absent <implicit>/

#48. <219> calyx <number of parts>/ 5

#49. <222> calyx <whether parts joined or free>/

1. free <or almost so> <polysepalous>/
2. of joined and free segments <partially gamosepalous>/
3. joined <gamosepalous>/

#50. calyx <length, mm>/

mm long/ ca 3mm

#51. <236> corolla <number of parts>/ 5

segments/

- #52. <240> corolla <whether parts joined or free>/
1. free <or almost so> <polysepalous>/
  2. of joined and free segments <partially gamosepalous>/
  3. joined <gamosepalous>/
- #53. <246?> corolla <where segments joined, shape>/
1. rotate/
  2. 2-lipped/
  3. campanulate/
  4. tubular/
  5. urceolate/
  6. trumpet-like/
  7. spurred/
  8. ligulate/
  9. lobed/
- #54. <255?> petals <or corolla lobes, whether incised>/
1. deeply bifid/
  2. 2-lobed/
  3. fringed/
  4. entire/
  5. emarginate/
  6. several lobed/
- #55. corolla <length, mm>/  
mm long/ 8-9mm
- #56. <271> stamens <fertile, number>/ 5
- #57. <269> staminodes <number>/ no
- #58. <265?> stamens <freedom>/
1. free/
  2. fused/
  3. some fused and some free/
- #59. stamens <insertion>/
1. opposite sepals/
  2. opposite petals/
  3. in continuous whorl/
  4. on corolla tube/
  5. in corolla throat/ <alternate with petals>
  6. free from corolla/
- #60. <283?> anthers dehiscent <mechanism>/
1. by pores/
  2. by vertical slits/
  3. by transverse slits/
  4. by valves/
  5. <other, specify>/
- #61. <316> ovary <gynoecium, constitution>/
1. monomerous <of a single carpel>/
  2. apocarpous <of two or more free carpels>/
  3. syncarpous <of two or more fused or partly fused carpels>/

#62. <318> ovary <position>/

1. superior/
2. partly inferior/
3. inferior/

#63. <326> ovary <locule number of syncarpous gynoecia>/  
locular/ 2

#64. <333?> styles <number>/ 1

#65. <336?> styles <insertion>/

1. apical/
2. lateral/
3. gynobasic/

#66. styles <whether simple or branched>/

1. simple/
2. branched/

#67. styles <number of branches>/  
branches/

#68. <?379, 381, 382> fruit <type>/

1. legume/
2. loment/
3. follicle/
4. achene/
5. samara/
6. nut/
7. drupe/
8. berry/
9. mericarps/
10. capsule/
11. silicule/
12. siliqua/
13. caryopsis/
14. <other, specify>/

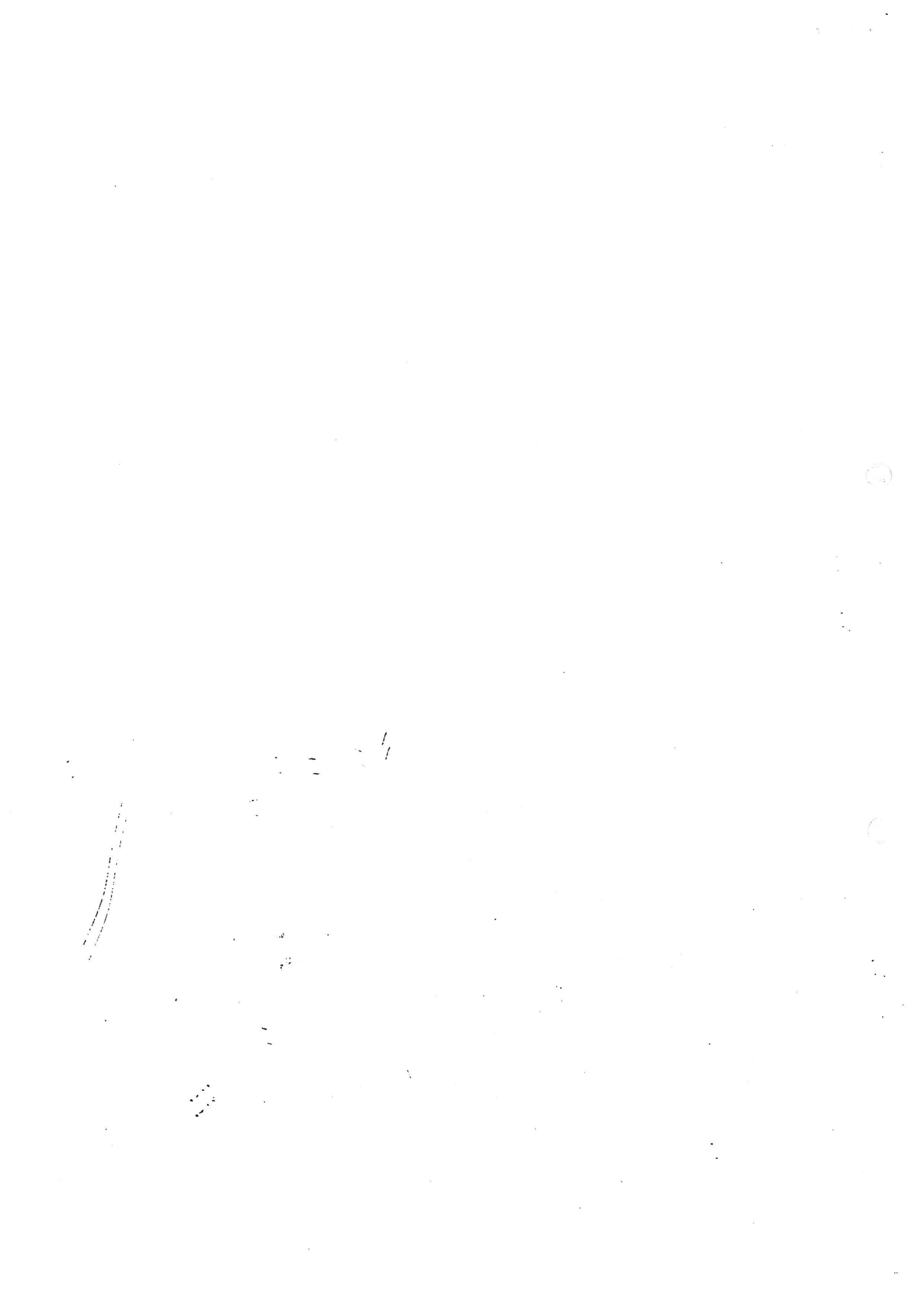
#69. <?378, 380> fruit <whether dehiscent>/

1. dehiscent/
2. indehiscent/

#70. fruit <length, mm>/  
mm long/

#71. fruit <width, mm>/  
mm wide/

#72. <text> <complete description, added only at completion of flora>/





\*SHOW: South West Flora Character List Revised 29 October 1993

\*CHARACTER LIST

#1. <supra group>/

1. fern/
2. cycad/
3. conifer/
4. monocot/
5. dicot/

#2. <origin> <whether native to SW region>/

1. native/
2. naturalised/

#3. <Beard subdistrict> <Western Australian South-west Province, Darling District>/

1. Dale Division/
2. Drummond Division/
3. Menzies Division/
4. Warren Division/

#4. <National Parks> <voucher specimens available>/

1. Leeuwin-Naturaliste/
2. Scott River/
3. D'entrecasteaux/
4. Beedelup/
5. Warren/
6. Shannon/
7. Mt Frankland/
8. Walpole-Nornalup/
9. William Bay/
10. West Cape Howe/
11. Torndirrup/

#5. <National Parks> <voucher specimens not available>/

1. Leeuwin-Naturaliste/
2. Scott River/
3. D'entrecasteaux/
4. Beedelup/
5. Warren/
6. Shannon/
7. Mt Frankland/
8. Walpole-Nornalup/
9. William Bay/
10. West Cape Howe/
11. Torndirrup/

#6. flowers <flowering period>/

1. January/
2. February/
3. March/
4. April/
5. May/
6. June/
7. July/
8. August/
9. September/

MS 30/11

10. October/

11. November/

12. December/

#7. <vegetation type>/

1. coastal heath/

2. swamp/

3. shrubland/

4. woodland/

5. karri forest/

6. jarrah forest/

7. other/

8. heath <not coastal>/

9. granite rocks/

#8. <text> <date> compiled/ 5 NOV 93

#9. <C> <5> <plant> <habit>/

1. tree/

2. tree-like/

3. shrub/

4. climber/

5. herb/

6. grass-like/

7. <other, specify>/

#10. <19> <plant> <longevity in herbs>/

1. annual/

2. biennial/

3. perennial/

#11. <C> <541> <plant> <height, m, including inflorescence>/  
m high/ 0.3 to 3m

#12. <29?> <plant> <whether aquatic or terrestrial>/

1. aquatic <hydrophytic>/

2. terrestrial <implicit>/

#13. <30> <hydrophytic habit>/

1. marine/

2. non-marine/

#14. <32> leaves <of rooted hydrophytes> <habit>/

1. submerged/

2. emergent/

3. floating/

#15. <C> <12> leaves <including phyllodes, presence>/

1. present <implicit>/

2. much reduced/

3. absent/

#16. leaves <whether fasciculate>/

1. fasciculate/

2. not fasciculate <implicit>/

#17. <36> leaves <insertion, score "scattered; crowded" as U, with comment>/

1. alternate/

2. opposite/

3. whorled/

#18. <37> leaves <phyllotaxy, when alternate>/

1. spiral/

2. distichous/

3. 4-ranked/

4. 3-ranked <tristichous>/

#19. leaves <opposite, whether decussate>/

1. decussate/

2. not decussate <implicit>/

#20. <64?> stipule <presence>/

1. present <well developed, leaves stipulate>/

2. absent <or much reduced, leaves exstipulate>/

*(small flap between opposite petioles)*

#21. <42> leaves <whether petiolate>/

1. petiolate/

2. subsessile/

3. sessile/

4. perfoliate/

#22. <C> <542> leaves <total leaf length, mm>/

mm long/

32-10mm

3.2 ?

32-100

#23. <C> <543> leaves <total leaf width, mm>/

mm wide/

7-35

#24. <C> <50> leaves <whether simple or compound>/

1. simple <implicit>/

2. compound/

#25. <56> <simple leaves> blade <dissection>/

1. dissected/

2. entire <apart from margin>/

#26. <simple leaves> <shape> <ref: Flora of the Perth Region>/

1. narrowly elliptic/

2. elliptic/

3. broadly elliptic/

4. circular elliptic/

5. transversely broadly elliptic/

6. transversely elliptic/

7. narrowly oblong/

8. oblong/

9. broadly oblong/

10. square/

11. transversely broadly oblong/

12. transversely oblong/

13. narrowly rhombic/

14. rhombic/

15. broadly rhombic/

16. quadrate/

17. transversely broadly rhombic/

18. transversely rhombic/

19. narrowly ovate/

20. ovate/

21. broadly ovate/
22. very broadly ovate/
23. depressed ovate/
24. narrowly obovate/
25. obovate/
26. broadly obovate/
27. very broadly obovate/
28. depressed obovate/
29. narrowly trullate/
30. trullate/
31. broadly trullate/
32. very broadly trullate/
33. depressed trullate/
34. narrowly obtrullate/
35. obtrullate/
36. broadly obtrullate/
37. very broadly obtrullate/
38. depressed obtrullate/
39. narrowly triangular/
40. triangular/
41. broadly triangular/
42. deltate/
43. shallowly triangular/
44. narrowly obtriangular/
45. obtriangular/
46. broadly obtriangular/
47. obdeltate/
48. shallowly obtriangular/
49. linear/
50. subulate/
51. <other - specify>/
52. filiform/

#27. <simple leaves> <whether twisted>/

1. twisted/
2. not twisted/

#28. <simple leaves> margins <whether ciliate>/

1. ciliate/
2. not ciliate/

#29. <39?> <leaves> blade <mature form>/

1. flat/
2. folded lengthwise/
3. concave/
4. convex/
5. involute/
6. revolute/
7. terete/
8. semi-terete/
9. 3-angled/
10. 4-angled/
11. compressed/

#30. <71?> <simple leaves> margins/

1. entire/
2. crenate/
3. serrate/

4. dentate/
5. denticulate/

#31. <542> <simple leaves> blade <length, mm>/  
mm long/ 25-85

#32. <543> <simple leaves> blade <width, mm>/  
mm wide/ 7-35

#33. <53> leaves <compound form>/

1. unifoliolate/
2. ternate/
3. pinnate/
4. palmate/
5. bipinnate/
6. multipinnate <multiply compound>/

#34. <compound leaves> <leaflet shape> <ref: Flora of the Perth Region>/

1. narrowly elliptic/
2. elliptic/
3. broadly elliptic/
4. circular elliptic/
5. transversely broadly elliptic/
6. transversely elliptic/
7. narrowly oblong/
8. oblong/
9. broadly oblong/
10. square/
11. transversely broadly oblong/
12. transversely oblong/
13. narrowly rhombic/
14. rhombic/
15. broadly rhombic/
16. quadrate/
17. transversely broadly rhombic/
18. transversely rhombic/
19. narrowly ovate/
20. ovate/
21. broadly ovate/
22. very broadly ovate/
23. depressed ovate/
24. narrowly obovate/
25. obovate/
26. broadly obovate/
27. very broadly obovate/
28. depressed obovate/
29. narrowly trullate/
30. trullate/
31. broadly trullate/
32. very broadly trullate/
33. depressed trullate/
34. narrowly obtrullate/
35. obtrullate/
36. broadly obtrullate/
37. very broadly obtrullate/
38. depressed obtrullate/
39. narrowly triangular/
40. triangular/

41. broadly triangular/
42. deltate/
43. shallowly triangular/
44. narrowly obtriangular/
45. obtriangular/
46. broadly obtriangular/
47. obdeltate/
48. shallowly obtriangular/
49. linear/
50. subulate/
51. <other - specify>/
52. filiform/

#35. <compound leaves> <leaflet> margin/

1. entire/
2. crenate/
3. serrate/
4. dentate/
5. denticulate/

#36. <compound leaves> <leaflet margins> <whether ciliate>/

1. ciliate/
2. not ciliate/

#37. <544> <compound leaves> leaflet blade <ultimate length, mm>/  
mm long/

#38. <545> <compound leaves> leaflet blade <ultimate width, mm>/  
mm wide/

#39. <C> <546> flowers <overall inflorescence colour>/

1. green/
2. white/
3. cream/
4. yellow/
5. orange/
6. red/
7. pink/
8. purple/
9. violet/
10. blue/
11. brown/
12. black/
13. other/

#40. flowers <shape> <casual character>/

1. 3-petal/
2. 4-petal/
3. 5-petal/
4. 6-petal/
5. pea flower/
6. wattle/
7. eucalypt/
8. daisy/
9. dandelion-daisy/
10. clustered/
11. other/
12. spikelet/

- #41. <C> <175> flowers <arrangement>/  
 1. solitary/  
 2. aggregated <into inflorescences>/
- #42. <C> <176> flowers in <inflorescence type>/  
 1. cymes/  
 2. racemes/  
 3. spikes/  
 4. heads/  
 5. umbels/  
 6. corymbs/  
 7. fascicles/  
 8. panicles/  
 9. verticils/  
 10. glomerules/  
 11. catkins/  
 12. <other - specify>/
- #43. <plant sexuality>/  
 1. hermaphrodite <flowers bisexual, implicit>/  
 2. monoecious <separate male and female flowers on same plant>/  
 3. dioecious <plants with either all male or all female flowers>/  
 4. other <specify>/
- #44. <186> <flowers> bracts <whether bracteate>/  
 1. present/  
 2. absent/
- #45. <188> <flowers> bracteoles <whether bracteolate>/  
 1. present/  
 2. absent/
- #46. <207?> floral whorls <presence or absence of perianth>/  
 1. two distinct whorls <calyx and corolla>/  
 2. intergrading calyx to corolla/  
 3. one whorl only (calyx) = corolla absent//  
 4. one whorl only (corolla) - calyx absent/  
 5. one whorl of uncertain origin <floral whorl or perianth>/  
 6. two whorls of uncertain origin <perianth in monocots>/  
 7. vestigial <reduced to bracts, scales, bristles, hairs or lodicules>/  
 8. absent/
- #47. <202> floral tube <presence>/  
 1. present/  
 2. absent <implicit>/
- #48. <219> calyx <number of parts>/ 5
- #49. <222> calyx <whether parts joined or free>/  
 1. free <or almost so> <polysepalous>/  
 2. of joined and free segments <partially gamosepalous>/  
 3. joined <gamosepalous>/
- #50. calyx <length, mm>/  
 mm long/ 1.7-3mm
- #51. <236> corolla <number of parts>/ 5

segments/

- #52. <240> corolla <whether parts joined or free>/
  1. free <or almost so> <polysepalous>/
  2. of joined and free segments <partially gamosepalous>/
  3. joined <gamosepalous>/

- #53. <246?> corolla <where segments joined, shape>/
  1. rotate/
  2. 2-lipped/
  3. campanulate/
  4. tubular/
  5. urceolate/
  6. trumpet-like/
  7. spurred/
  8. ligulate/
  9. lobed/

- #54. <255?> petals <or corolla lobes, whether incised>/
  1. deeply bifid/
  2. 2-lobed/
  3. fringed/
  4. entire/
  5. emarginate/
  6. several lobed/

#55. corolla <length, mm>/  
 mm long/      3-5.5

#56. <271> stamens <fertile, number>/ 5

#57. <269> staminodes <number>/ ✓

- #58. <265?> stamens <freedom>/
  1. free/
  2. fused/
  3. some fused and some free/

- #59. stamens <insertion>/
  1. opposite sepals/
  2. opposite petals/
  3. in continuous whorl/
  4. on corolla tube/
  5. in corolla throat/ <alternate with petals>
  6. free from corolla/

- #60. <283?> anthers dehiscing <mechanism>/
  1. by pores/
  2. by vertical slits/
  3. by transverse slits/
  4. by valves/
  5. <other, specify>/

- #61. <316> ovary <gynoecium, constitution>/
  1. monomerous <of a single carpel>/
  2. apocarpous <of two or more free carpels>/
  3. syncarpous <of two or more fused or partly fused carpels>/



#62. <318> ovary <position>/

1. superior/
2. partly inferior/
3. inferior/

#63. <326> ovary <locule number of syncarpous gynoecia>/  
locular/ 2

#64. <333?> styles <number>/

#65. <336?> styles <insertion>/

1. apical/
2. lateral/
3. gynobasic/

#66. styles <whether simple or branched>/

1. simple/
2. branched/

#67. styles <number of branches>/  
branches/

#68. <?379, 381, 382> fruit <type>/

1. legume/
2. loment/
3. follicle/
4. achene/
5. samara/
6. nut/
7. drupe/
8. berry/
9. mericarps/
10. capsule/
11. silicule/
12. siliqua/
13. caryopsis/
14. <other, specify>/

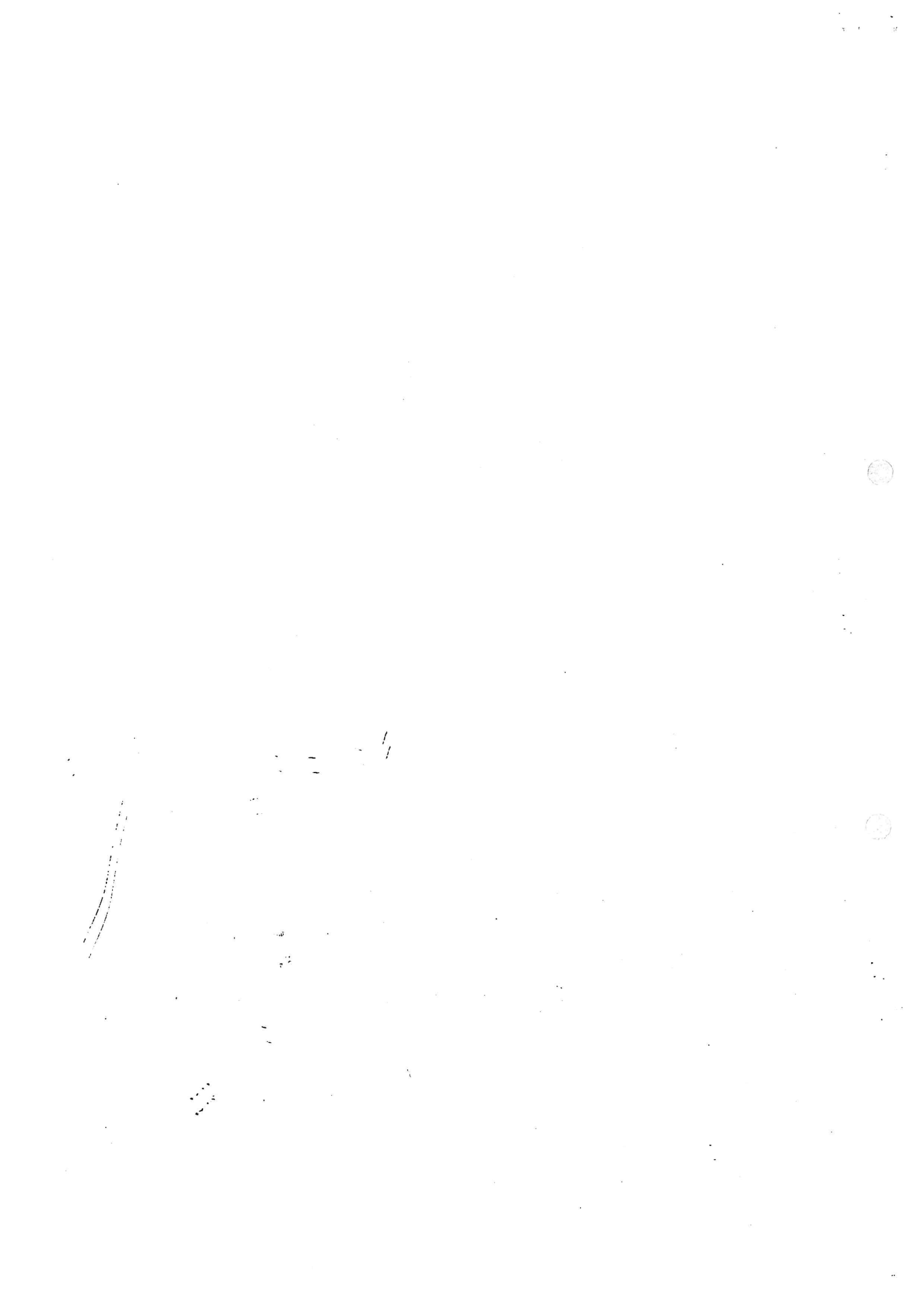
#69. <?378, 380> fruit <whether dehiscent>/

1. dehiscent/
2. indehiscent/

#70. fruit <length, mm>/ 7-9mm  
mm long/

#71. fruit <width, mm>/  
mm wide/

#72. <text> <complete description, added only at completion of flora>/



ms 301

\*SHOW: South West Flora Character List Revised 29 October 1993

\*CHARACTER LIST

#1. <supra group>/

1. fern/
2. cycad/
3. conifer/
4. monocot/
5. dicot/

#2. <origin> <whether native to SW region>/

1. native/
2. naturalised/

#3. <Beard subdistrict> <Western Australian South-west Province, Darling District>/

1. Dale Division/
2. Drummond Division/
3. Menzies Division/
4. Warren Division/

#4. <National Parks> <voucher specimens available>/

1. Leeuwin-Naturaliste/
2. Scott River/
3. D'entrecasteaux/
4. Beedelup/
5. Warren/
6. Shannon/
7. Mt Frankland/
8. Walpole-Nornalup/
9. William Bay/
10. West Cape Howe/
11. Torndirrup/

#5. <National Parks> <voucher specimens not available>/

1. Leeuwin-Naturaliste/
2. Scott River/
3. D'entrecasteaux/
4. Beedelup/
5. Warren/
6. Shannon/
7. Mt Frankland/
8. Walpole-Nornalup/
9. William Bay/
10. West Cape Howe/
11. Torndirrup/

#6. flowers <flowering period>/

1. January/
2. February/
3. March/
4. April/
5. May/
6. June/
7. July/
8. August/
9. September/

10. October/

11. November/

12. December/

#7. <vegetation type>/

1. coastal heath/

2. swamp/

3. shrubland/

4. woodland/

5. karri forest/

6. jarrah forest/

7. other/

8. heath <not coastal>/

9. granite rocks/

#8. <text> <date> compiled/ 8 NOV 93

#9. <C> <5> <plant> <habit>/

1. tree/

2. tree-like/

3. shrub/

4. climber/

5. herb/

6. grass-like/

7. <other, specify>/

#10. <19> <plant> <longevity in herbs>/

1. annual/

2. biennial/

3. perennial/

#11. <C> <541> <plant> <height, m, including inflorescence>/  
m high/ 0.05 - 0.1m (occasionally to 0.3m)

#12. <29?> <plant> <whether aquatic or terrestrial>/

1. aquatic <hydrophytic>/

2. terrestrial <implicit>/

#13. <30> <hydrophytic habit>/

1. marine/

2. non-marine/

#14. <32> leaves <of rooted hydrophytes> <habit>/

1. submerged/

2. emergent/

3. floating/

#15. <C> <12> leaves <including phyllodes, presence>/

1. present <implicit>/

2. much reduced/

3. absent/

#16. leaves <whether fasciculate>/

1. fasciculate/

2. not fasciculate <implicit>/

#17. <36> leaves <insertion, score "scattered; crowded" as U, with comment>/

1. alternate/

2. opposite/

3. whorled/

&lt;basal rosette&gt;

#18. &lt;37&gt; leaves &lt;phyllotaxy, when alternate&gt;/

1. spiral/
2. distichous/
3. 4-ranked/
4. 3-ranked <tristichous>/

#19. leaves &lt;opposite, whether decussate&gt;/

1. decussate/
2. not decussate <implicit>/

#20. &lt;64?&gt; stipule &lt;presence&gt;/

1. present <well developed, leaves stipulate>/
2. absent <or much reduced, leaves exstipulate>/

&lt;small, joining leaf bases, forming sheath&gt;

#21. &lt;42&gt; leaves &lt;whether petiolate&gt;/

1. petiolate/
2. subsessile/
3. sessile/
4. perfoliate/

#22. &lt;C&gt; &lt;542&gt; leaves &lt;total leaf length, mm&gt;/

mm long/ 3-12 mm

#23. &lt;C&gt; &lt;543&gt; leaves &lt;total leaf width, mm&gt;/

mm wide/ 0.5-3 mm

#24. &lt;C&gt; &lt;50&gt; leaves &lt;whether simple or compound&gt;/

1. simple <implicit>/
2. compound/

#25. &lt;56&gt; &lt;simple leaves&gt; blade &lt;dissection&gt;/

1. dissected/
2. entire <apart from margin>/

#26. &lt;simple leaves&gt; &lt;shape&gt; &lt;ref: Flora of the Perth Region&gt;/

1. narrowly elliptic/
2. elliptic/
3. broadly elliptic/
4. circular elliptic/
5. transversely broadly elliptic/
6. transversely elliptic/
7. narrowly oblong/
8. oblong/
9. broadly oblong/
10. square/
11. transversely broadly oblong/
12. transversely oblong/
13. narrowly rhombic/
14. rhombic/
15. broadly rhombic/
16. quadrate/
17. transversely broadly rhombic/
18. transversely rhombic/
19. narrowly ovate/
20. ovate/

21. broadly ovate/
22. very broadly ovate/
23. depressed ovate/
24. narrowly obovate/
25. obovate/
26. broadly obovate/
27. very broadly obovate/
28. depressed obovate/
29. narrowly trullate/
30. trullate/
31. broadly trullate/
32. very broadly trullate/
33. depressed trullate/
34. narrowly obtrullate/
35. obtrullate/
36. broadly obtrullate/
37. very broadly obtrullate/
38. depressed obtrullate/
39. narrowly triangular/
40. triangular/
41. broadly triangular/
42. deltate/
43. shallowly triangular/
44. narrowly obtriangular/
45. obtriangular/
46. broadly obtriangular/
47. obdeltate/
48. shallowly obtriangular/
49. linear/
50. subulate/
51. <other - specify>/
52. filiform/

#27. <simple leaves> <whether twisted>/

1. twisted/
2. not twisted/

#28. <simple leaves> margins <whether ciliate>/

1. ciliate/
2. not ciliate/

#29. <39?> <leaves> blade <mature form>/

1. flat/  $\sigma$
2. folded lengthwise/
3. concave/
4. convex/
5. involute/
6. revolute/
7. terete/
8. semi-terete/
9. 3-angled/
10. 4-angled/
11. compressed/

#30. <71?> <simple leaves> margins/

1. entire/
2. crenate/
3. serrate/

4. dentate/
5. denticulate/

#31. <542> <simple leaves> blade <length, mm>/  
mm long/ 3-12 mm

#32. <543> <simple leaves> blade <width, mm>/  
mm wide/ 0.5-3 mm

#33. <53> leaves <compound form>/

1. unifoliolate/
2. ternate/
3. pinnate/
4. palmate/
5. bipinnate/
6. multipinnate <multiply compound>/

#34. <compound leaves> <leaflet shape> <ref: Flora of the Perth Region>/

1. narrowly elliptic/
2. elliptic/
3. broadly elliptic/
4. circular elliptic/
5. transversely broadly elliptic/
6. transversely elliptic/
7. narrowly oblong/
8. oblong/
9. broadly oblong/
10. square/
11. transversely broadly oblong/
12. transversely oblong/
13. narrowly rhombic/
14. rhombic/
15. broadly rhombic/
16. quadrate/
17. transversely broadly rhombic/
18. transversely rhombic/
19. narrowly ovate/
20. ovate/
21. broadly ovate/
22. very broadly ovate/
23. depressed ovate/
24. narrowly obovate/
25. obovate/
26. broadly obovate/
27. very broadly obovate/
28. depressed obovate/
29. narrowly trullate/
30. trullate/
31. broadly trullate/
32. very broadly trullate/
33. depressed trullate/
34. narrowly obtrullate/
35. obtrullate/
36. broadly obtrullate/
37. very broadly obtrullate/
38. depressed-obtrullate/
39. narrowly triangular/
40. triangular/

41. broadly triangular/
42. deltate/
43. shallowly triangular/
44. narrowly obtriangular/
45. obtriangular/
46. broadly obtriangular/
47. obdeltate/
48. shallowly obtriangular/
49. linear/
50. subulate/
51. <other - specify>/
52. filiform/

#35. <compound leaves> <leaflet> margin/

1. entire/
2. crenate/
3. serrate/
4. dentate/
5. denticulate/

#36. <compound leaves> <leaflet margins> <whether ciliate>/

1. ciliate/
2. not ciliate/

#37. <544> <compound leaves> leaflet blade <ultimate length, mm>/  
mm long/

#38. <545> <compound leaves> leaflet blade <ultimate width, mm>/  
mm wide/

#39. <C> <546> flowers <overall inflorescence colour>/

1. green/
2. white/
3. cream/
4. yellow/
5. orange/
6. red/
7. pink/
8. purple/
9. violet/
10. blue/
11. brown/
12. black/
13. other/

#40. flowers <shape> <casual character>/

1. 3-petal/
2. 4-petal/
3. 5-petal/
4. 6-petal/
5. pea flower/
6. wattle/
7. eucalypt/
8. daisy/
9. dandelion-daisy/
10. clustered/
11. other/
12. spikelet/



#41. <C> <175> flowers <arrangement>/

1. solitary/
2. aggregated <into inflorescences>/

#42. <C> <176> flowers in <inflorescence type>/

1. cymes/ *or*
2. racemes/
3. spikes/
4. heads/
5. umbels/
6. corymbs/
7. fascicles/
8. panicles/
9. verticils/
10. glomerules/
11. catkins/
12. <other - specify>/

#43. <plant sexuality>/

1. hermaphrodite <flowers bisexual, implicit>/
2. monoecious <separate male and female flowers on same plant>/
3. dioecious <plants with either all male or all female flowers>/
4. other <specify>/

#44. <186> <flowers> bracts <whether bracteate>/

1. present/
2. absent/

#45. <188> <flowers> bracteoles <whether bracteolate>/

1. present/
2. absent/

#46. <207?> floral whorls <presence or absence of perianth>/

1. two distinct whorls <calyx and corolla>/
2. intergrading calyx to corolla/
3. one whorl only (calyx) = corolla absent/
4. one whorl only (corolla) - calyx absent/
5. one whorl of uncertain origin <floral whorl or perianth>/
6. two whorls of uncertain origin <perianth in monocots>/
7. vestigial <reduced to bracts, scales, bristles, hairs or lodicules>/
8. absent/

#47. <202> floral tube <presence>/

1. present/
2. absent <implicit>/

#48. <219> calyx <number of parts>/ *2 (usually)*

#49. <222> calyx <whether parts joined or free>/

1. free <or almost so> <polysepalous>/
2. of joined and free segments <partially gamosepalous>/
3. joined <gamosepalous>/

#50. calyx <length, mm>/

mm long/ *2-4 mm*

#51. <236> corolla <number of parts>/ *4*

segments/

#52. <240> corolla <whether parts joined or free>/

1. free <or almost so> <polysepalous>/
2. of joined and free segments <partially gamosepalous>/
3. joined <gamosepalous>/

#53. <246?> corolla <where segments joined, shape>/

1. rotate/
2. 2-lipped/
3. campanulate/
4. tubular/
5. urceolate/
6. trumpet-like/
7. spurred/
8. ligulate/
9. lobed/

#54. <255?> petals <or corolla lobes, whether incised>/

1. deeply bifid/
2. 2-lobed/
3. fringed/
4. entire/
5. emarginate/
6. several lobed/

#55. corolla <length, mm>/  
mm long/ *ca 2-5mm*

2.5

#56. <271> stamens <fertile, number>/ *4*

#57. <269> staminodes <number>/ *no*

#58. <265?> stamens <freedom>/

1. free/
2. fused/
3. some fused and some free/

#59. stamens <insertion>/

1. opposite sepals/
2. opposite petals/
3. in continuous whorl/
4. on corolla tube/
5. in corolla throat/
6. free from corolla/

*<alternate with petals>*

#60. <283?> anthers dehiscing <mechanism>/

1. by pores/
2. by vertical slits/
3. by transverse slits/
4. by valves/
5. <other, specify>/

#61. <316> ovary <gynoecium, constitution>/

1. monomerous <of a single carpel>/
2. apocarpous <of two or more free carpels>/
3. syncarpous <of two or more fused or partly fused carpels>/

*<separating at maturity>*

#62. <318> ovary <position>/

1. superior/
2. partly inferior/
3. inferior/

#63. <326> ovary <locule number of syncarpous gynoecia>/  
locular/ 2

#64. <333?> styles <number>/ 2 (joined, splitting from base upwards)

#65. <336?> styles <insertion>/

1. apical/
2. lateral/
3. gynobasic/

#66. styles <whether simple or branched>/

1. simple/
2. branched/

#67. styles <number of branches>/  
branches/

#68. <?379, 381, 382> fruit <type>/

1. legume/
2. loment/
3. follicle/
4. achene/
5. samara/
6. nut/
7. drupe/
8. berry/
9. mericarps/
10. capsule/
11. silicule/
12. siliqua/
13. caryopsis/
14. <other, specify>/

#69. <?378, 380> fruit <whether dehiscent>/

1. dehiscent/
2. indehiscent/

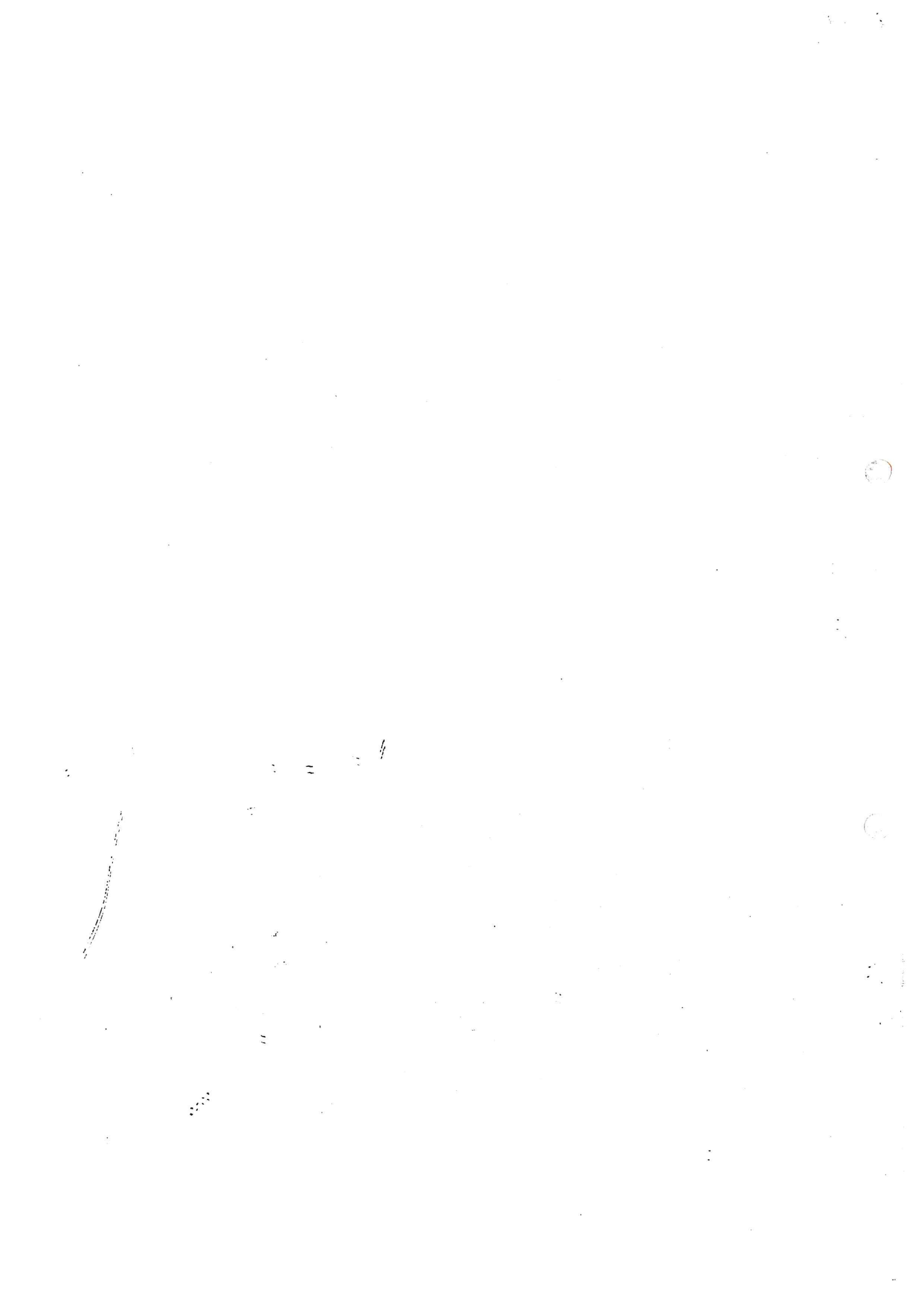
#70. fruit <length, mm>/

mm long/ 2-2.5mm

#71. fruit <width, mm>/

mm wide/

#72. <text> <complete description, added only at completion of flora>/



Mitrasacme sp A

LOGANIACEAE

= *Phyllangium divergens*

ms 301"

\*SHOW: South West Flora Character List Revised 28 October 1993

\*CHARACTER LIST

#1. <supra group>/

1. fern/
2. cycad/
3. conifer/
4. monocot/
5. dicot/

#2. <origin> <whether native to SW region>/

1. native/
2. naturalised/

#3. <Beard subdistrict> <Western Australian South-west Province, Darling District>/

1. Dale Division/
2. Drummond Division/
3. Menzies Division/
4. Warren Division/

#4. <National Parks> <voucher specimens available>/

1. Leeuwin-Naturaliste/
2. Scott River/
3. D'entrecasteaux/
4. Beedelup/
5. Warren/
6. Shannon/
7. Mt Frankland/
8. Walpole-Nornalup/
9. William Bay/
10. West Cape Howe/
11. Torndirrup/

#5. <National Parks> <voucher specimens not available>/

1. Leeuwin-Naturaliste/
2. Scott River/
3. D'entrecasteaux/
4. Beedelup/
5. Warren/
6. Shannon/
7. Mt Frankland/
8. Walpole-Nornalup/
9. William Bay/
10. West Cape Howe/
11. Torndirrup/

#6. flowers <flowering period>/

1. January/
2. February/
3. March/
4. April/
5. May/
6. June/
7. July/
8. August/
9. September/

- 10. October/
- 11. November/
- 12. December/

#7. <vegetation type>/

- 1. coastal heath/
- 2. swamp/
- 3. shrubland/
- 4. woodland/
- 5. karri forest/
- 6. jarrah forest/
- 7. other/ *Agonis flexuosa low forest*
- 8. heath <not coastal>/
- 9. granite rocks/

#8. <text> <date> compiled/ 8 NOV 93

#9. <C> <5> <plant> <habit>/

- 1. tree/
- 2. tree-like/
- 3. shrub/
- 4. climber/
- 5. herb/
- 6. grass-like/
- 7. <other, specify>/

#10. <19> <plant> <longevity in herbs>/

- 1. annual/
- 2. biennial/
- 3. perennial/

#11. <C> <541> <plant> <height, m, including inflorescence>/  
m high/ 40mm (0.04m.)

#12. <29?> <plant> <whether aquatic or terrestrial>/

- 1. aquatic <hydrophytic>/
- 2. terrestrial <implicit>/

#13. <30> <hydrophytic habit>/

- 1. marine/
- 2. non-marine/

#14. <32> leaves <of rooted hydrophytes> <habit>/

- 1. submerged/
- 2. emergent/
- 3. floating/

#15. <C> <12> leaves <including phyllodes, presence>/

- 1. present <implicit>/
- 2. much reduced/
- 3. absent/

#16. leaves <whether fasciculate>/

- 1. fasciculate/
- 2. not fasciculate <implicit>/

#17. <36> leaves <insertion, score "scattered; crowded" as U, with comment>/

- 1. alternate/

2. opposite/

3. whorled/

#18. <37> leaves <phyllotaxy, when alternate>/

1. spiral/

2. distichous/

3. 4-ranked/

4. 3-ranked <tristichous>/

#19. leaves <opposite, whether decussate>/

1. decussate/

2. not decussate <implicit>/

#20. <64?> stipule <presence>/

1. present <well developed, leaves stipulate>/

2. absent <or much reduced, leaves exstipulate>/

<Joining leaf bases, forming sheath>

#21. <42> leaves <whether petiolate>/

1. petiolate/

2. subsessile/

3. sessile/

4. perfoliate/

#22. <C> <542> leaves <total leaf length, mm>/

mm long/ 3-7mm

#23. <C> <543> leaves <total leaf width, mm>/

mm wide/ 1-2.5mm

#24. <C> <50> leaves <whether simple or compound>/

1. simple <implicit>/

2. compound/

#25. <56> <simple leaves> blade <dissection>/

1. dissected/

2. entire <apart from margin>/

#26. <simple leaves> <shape> <ref: Flora of the Perth Region>/

1. narrowly elliptic/

2. elliptic/

3. broadly elliptic/

4. circular elliptic/

5. transversely broadly elliptic/

6. transversely elliptic/

7. narrowly oblong/

8. oblong/

9. broadly oblong/

10. square/

11. transversely broadly oblong/

12. transversely oblong/

13. narrowly rhombic/

14. rhombic/

15. broadly rhombic/

16. quadrate/

17. transversely broadly rhombic/

18. transversely rhombic/

19. narrowly ovate/

20. ovate/

21. broadly ovate/
22. very broadly ovate/
23. depressed ovate/
24. narrowly obovate/
25. obovate/
26. broadly obovate/
27. very broadly obovate/
28. depressed obovate/
29. narrowly trullate/
30. trullate/
31. broadly trullate/
32. very broadly trullate/
33. depressed trullate/
34. narrowly obtrullate/
35. obtrullate/
36. broadly obtrullate/
37. very broadly obtrullate/
38. depressed obtrullate/
39. narrowly triangular/
40. triangular/
41. broadly triangular/
42. deltate/
43. shallowly triangular/
44. narrowly obtriangular/
45. obtriangular/
46. broadly obtriangular/
47. obdeltate/
48. shallowly obtriangular/
49. linear/
50. subulate/
51. <other - specify>/
52. filiform/

#27. <simple leaves> <whether twisted>/

1. twisted/
2. not twisted/

#28. <simple leaves> margins <whether ciliate>/

1. ciliate/
2. not ciliate/

#29. <39?> <leaves> blade <mature form>/

1. flat/
2. folded lengthwise/
3. concave/
4. convex/
5. involute/
6. revolute/
7. terete/
8. semi-terete/
9. 3-angled/
10. 4-angled/
11. compressed/

#30. <71?> <simple leaves> margins/

1. entire/
2. crenate/
3. serrate/



- 4. dentate/
- 5. denticulate/

#31. <542> <simple leaves> blade <length, mm>/  
mm long/ 3-7 mm

#32. <543> <simple leaves> blade <width, mm>/  
mm wide/ 1-2.5 mm

#33. <53> leaves <compound form>/

- 1. unifoliolate/
- 2. ternate/
- 3. pinnate/
- 4. palmate/
- 5. bipinnate/
- 6. multipinnate <multiply compound>/

#34. <compound leaves> <shape> <ref: Flora of the Perth Region>/

- 1. narrowly elliptic/
- 2. elliptic/
- 3. broadly elliptic/
- 4. circular elliptic/
- 5. transversely broadly elliptic/
- 6. transversely elliptic/
- 7. narrowly oblong/
- 8. oblong/
- 9. broadly oblong/
- 10. square/
- 11. transversely broadly oblong/
- 12. transversely oblong/
- 13. narrowly rhombic/
- 14. rhombic/
- 15. broadly rhombic/
- 16. quadrate/
- 17. transversely broadly rhombic/
- 18. transversely rhombic/
- 19. narrowly ovate/
- 20. ovate/
- 21. broadly ovate/
- 22. very broadly ovate/
- 23. depressed ovate/
- 24. narrowly obovate/
- 25. obovate/
- 26. broadly obovate/
- 27. very broadly obovate/
- 28. depressed obovate/
- 29. narrowly trullate/
- 30. trullate/
- 31. broadly trullate/
- 32. very broadly trullate/
- 33. depressed trullate/
- 34. narrowly obtrullate/
- 35. obtrullate/
- 36. broadly obtrullate/
- 37. very broadly obtrullate/
- 38. depressed obtrullate/
- 39. narrowly triangular/
- 40. triangular/

41. broadly triangular/
42. deltate/
43. shallowly triangular/
44. narrowly obtriangular/
45. obtriangular/
46. broadly obtriangular/
47. obdeltate/
48. shallowly obtriangular/
49. linear/
50. subulate/
51. <other - specify>/
52. filiform/

#35. <compound leaves> <leaflet> margin/

1. entire/
2. crenate/
3. serrate/
4. dentate/
5. denticulate/

#36. <compound leaves> <leaflet margins> <whether ciliate>/

1. ciliate/
2. not ciliate/

#37. <544> <compound leaves> leaflet blade <ultimate length, mm>/  
mm long/

#38. <545> <compound leaves> leaflet blade <ultimate width, mm>/  
mm wide/

#39. <C> <546> flowers <overall inflorescence colour>/

1. green/
2. white/
3. cream/
4. yellow/
5. orange/
6. red/
7. pink/
8. purple/
9. violet/
10. blue/
11. brown/
12. black/
13. other/

#40. flowers <shape> <casual character>/

1. 3-petal/
2. 4-petal/
3. 5-petal/
4. 6-petal/
5. pea flower/
6. wattle/
7. eucalypt/
8. daisy/
9. dandelion-daisy/
10. clustered/
11. other/
12. spikelet/

#41. <C> <175> flowers <arrangement>/

1. solitary/ or
2. aggregated <into inflorescences>/

#42. <C> <176> flowers in <inflorescence type>/

1. cymes/ or
2. racemes/
3. spikes/
4. heads/
5. umbels/
6. corymbs/
7. fascicles/
8. panicles/
9. verticils/
10. glomerules/
11. catkins/
12. <other - specify>/

#43. <plant sexuality>/

1. hermaphrodite <flowers bisexual, implicit>/
2. monoecious <separate male and female flowers on same plant>/
3. dioecious <plants with either all male or all female flowers>/
4. other <specify>/

#44. <186> <flowers> bracts <whether bracteate>/

1. present/
2. absent/

#45. <188> <flowers> bracteoles <whether bracteolate>/

1. present/
2. absent/

#46. <207?> floral whorls <presence or absence of perianth>/

1. two distinct whorls <calyx and corolla>/
2. intergrading calyx to corolla/
3. one whorl only (calyx) - corolla absent/
4. one whorl only (corolla) - calyx absent/
5. one whorl of uncertain origin <floral whorl or perianth>/
6. two whorls of uncertain origin <perianth in monocots>/
7. vestigial <reduced to bracts, scales, bristles, hairs or lodicules>/
8. absent/

#47. <202> floral tube <presence>/

1. present/
2. absent <implicit>/

#48. <219> calyx <number of parts>/ 2

#49. <222> calyx <whether parts joined or free>/

1. free <or almost so> <polysepalous>/
2. of joined and free segments <partially gamosepalous>/
3. joined <gamosepalous>/

#50. calyx <length, mm>/

mm long/ 3-5mm

#51. <236> corolla <number of parts>/ 4

segments/

#52. <240> corolla <whether parts joined or free>/

1. free <or almost so> <polysepalous>/
2. of joined and free segments <partially gamosepalous>/
3. joined <gamosepalous>/

#53. <246?> corolla <where segments joined, shape>/

1. rotate/
2. 2-lipped/
3. campanulate/
4. tubular/
5. urceolate/
6. trumpet-like/
7. spurred/
8. ligulate/
9. lobed/

#54. <255?> petals <or corolla lobes, whether incised>/

1. deeply bifid/
2. 2-lobed/
3. fringed/
4. entire/
5. emarginate/
6. several lobed/

#55. corolla <length, mm>/

mm long/ *ca 3mm*

#56. <271> stamens <fertile, number>/ *4*

#57. <269> staminodes <number>/ *—*

#58. <265?> stamens <freedom>/

1. free/
2. fused/
3. some fused and some free/

#59. stamens <insertion>/

1. opposite sepals/
2. opposite petals/
3. in continuous whorl/
4. on corolla tube/
5. in corolla throat/
6. free from corolla/

*<alternate to corolla lobes>*

#60. <283?> anthers dehiscing <mechanism>/

1. by pores/
2. by vertical slits/
3. by transverse slits/
4. by valves/
5. <other, specify>/

#61. <316> ovary <gynoecium, constitution>/

1. monomerous <of a single carpel>/
2. apocarpous <of two or more free carpels>/
3. syncarpous <of two or more fused or partly fused carpels>/

*<separating at maturity>*

#62. <318> ovary <position>/

1. superior/
2. partly inferior/
3. inferior/

#63. <326> ovary <locule number of syncarpous gynoecia>/  
locular/ 2

#64. <333?> styles <number>/ 2 < joined, splitting from base upwards)

#65. <336?> styles <insertion>/

1. apical/
2. lateral/
3. gynobasic/

#66. styles <whether simple or branched>/

1. simple/
2. branched/

#67. styles <number of branches>/  
branches/

#68. <?379, 381, 382> fruit <type>/

1. legume/
2. loment/
3. follicle/
4. achene/
5. samara/
6. nut/
7. drupe/
8. berry/
9. mericarps/
10. capsule/
11. silicule/
12. siliqua/
13. caryopsis/
14. <other, specify>/

#69. <?378, 380> fruit <whether dehiscent>/

1. dehiscent/
2. indehiscent/

#70. fruit <length, mm>/

mm long/ 2-2.5mm

#71. fruit <width, mm>/

mm wide/

#72. <text> <complete description, added only at completion of flora>/



Genus nov att *Mitrasacme* sp H  
= *Mitreola minima*

LOGANIACEAE

Nov 16/12

\*SHOW: South West Flora Character List Revised 29 October 1993

\*CHARACTER LIST

#1. <supra group>/

1. fern/
2. cycad/
3. conifer/
4. monocot/
5. dicot/

#2. <origin> <whether native to SW region>/

1. native/
2. naturalised/

#3. <Beard subdistrict> <Western Australian South-west Province, Darling

District>/

1. Dale Division/
2. Drummond Division/
3. Menzies Division/
4. Warren Division/

#4. <National Parks> <voucher specimens available>/

1. Leeuwin-Naturaliste/
2. Scott River/
3. D'entrecasteaux/
4. Beedelup/
5. Warren/
6. Shannon/
7. Mt Frankland/
8. Walpole-Nornalup/
9. William Bay/
10. West Cape Howe/
11. Torndirrup/

#5. <National Parks> <voucher specimens not available>/

1. Leeuwin-Naturaliste/-
2. Scott River/
3. D'entrecasteaux/
4. Beedelup/
5. Warren/
6. Shannon/
7. Mt Frankland/
8. Walpole-Nornalup/
9. William Bay/
10. West Cape Howe/
11. Torndirrup/

#6. flowers <flowering period>/

1. January/
2. February/
3. March/
4. April/
5. May/
6. June/
7. July/
8. August/
9. September/

- 10. October/
- 11. November/
- 12. December/

#7. <vegetation type>/

- 1. coastal heath/
- 2. swamp/
- 3. shrubland/
- 4. woodland/
- 5. karri forest/
- 6. jarrah forest/
- 7. other/
- 8. heath <not coastal>/
- 9. granite rocks/

#8. <text> <date> compiled/ 8 NOV 93

#9. <C> <5> <plant> <habit>/

- 1. tree/
- 2. tree-like/
- 3. shrub/
- 4. climber/
- 5. herb/
- 6. grass-like/
- 7. <other, specify>/

#10. <19> <plant> <longevity in herbs>/

- 1. annual/
- 2. biennial/
- 3. perennial/

#11. <C> <541> <plant> <height, m, including inflorescence>/  
m high/ 0.04 - 0.08

#12. <29?> <plant> <whether aquatic or terrestrial>/

- 1. aquatic <hydrophytic>/
- 2. terrestrial <implicit>/

#13. <30> <hydrophytic habit>/

- 1. marine/
- 2. non-marine/

#14. <32> leaves <of rooted hydrophytes> <habit>/

- 1. submerged/
- 2. emergent/
- 3. floating/

#15. <C> <12> leaves <including phyllodes, presence>/

- 1. present <implicit>/
- 2. much reduced/
- 3. absent/

#16. leaves <whether fasciculate>/

- 1. fasciculate/
- 2. not fasciculate <implicit>/

#17. <36> leaves <insertion, score "scattered; crowded" as U, with comment>/

- 1. alternate/



2. opposite/

3. whorled/

#18. <37> leaves <phyllotaxy, when alternate>/

1. spiral/

2. distichous/

3. 4-ranked/

4. 3-ranked <tristichous>/

#19. leaves <opposite, whether decussate>/

1. decussate/

2. not decussate <implicit>/

#20. <64?> stipule <presence>/

1. present <well developed, leaves stipulate>/

2. absent <or much reduced, leaves exstipulate>/

*<forming sheath between leaf bases>*

#21. <42> leaves <whether petiolate>/

1. petiolate/

2. subsessile/

3. sessile/

4. perfoliate/

#22. <C> <542> leaves <total leaf length, mm>/

mm long/

*3-5mm*

#23. <C> <543> leaves <total leaf width, mm>/

mm wide/

*0.5-1mm*

#24. <C> <50> leaves <whether simple or compound>/

1. simple <implicit>/

2. compound/

#25. <56> <simple leaves> blade <dissection>/

1. dissected/

2. entire <apart from margin>/

#26. <simple leaves> <shape> <ref: Flora of the Perth Region>/

1. narrowly elliptic/

2. elliptic/

3. broadly elliptic/

4. circular elliptic/

5. transversely broadly elliptic/

6. transversely elliptic/

7. narrowly oblong/

8. oblong/

9. broadly oblong/

10. square/

11. transversely broadly oblong/

12. transversely oblong/

13. narrowly rhombic/

14. rhombic/

15. broadly rhombic/

16. quadrate/

17. transversely broadly rhombic/

18. transversely rhombic/

19. narrowly ovate/

20. ovate/

21. broadly ovate/
22. very broadly ovate/
23. depressed ovate/
24. narrowly obovate/
25. obovate/
26. broadly obovate/
27. very broadly obovate/
28. depressed obovate/
29. narrowly trullate/
30. trullate/
31. broadly trullate/
32. very broadly trullate/
33. depressed trullate/
34. narrowly obtrullate/
35. obtrullate/
36. broadly obtrullate/
37. very broadly obtrullate/
38. depressed obtrullate/
39. narrowly triangular/
40. triangular/
41. broadly triangular/
42. deltate/
43. shallowly triangular/
44. narrowly obtriangular/
45. obtriangular/
46. broadly obtriangular/
47. obdeltate/
48. shallowly obtriangular/
49. linear/
50. subulate/
51. <other - specify>/
52. filiform/

#27. <simple leaves> <whether twisted>/

1. twisted/

2. not twisted/

#28. <simple leaves> margins <whether ciliate>/

1. ciliate/

2. not ciliate/

#29. <?9?> <leaves> blade <mature form>/

1. flat/

2. folded lengthwise/

3. concave/

4. convex/

5. involute/

6. revolute/

7. terete/

8. semi-terete/

9. 3-angled/

10. 4-angled/

11. compressed/

#30. <?1?> <simple leaves> margins/

1. entire/

2. crenate/

3. serrate/

4. dentate/
5. denticulate/

#31. <542> <simple leaves> blade <length, mm>/  
mm long/ 3-5mm

#32. <543> <simple leaves> blade <width, mm>/  
mm wide/ 0.5-1mm

#33. <53> leaves <compound form>/

1. unifoliolate/
2. ternate/
3. pinnate/
4. palmate/
5. bipinnate/
6. multipinnate <multiply compound>/

#34. <compound leaves> <leaflet shape> <ref: Flora of the Perth Region>/

1. narrowly elliptic/
2. elliptic/
3. broadly elliptic/
4. circular elliptic/
5. transversely broadly elliptic/
6. transversely elliptic/
7. narrowly oblong/
8. oblong/
9. broadly oblong/
10. square/
11. transversely broadly oblong/
12. transversely oblong/
13. narrowly rhombic/
14. rhombic/
15. broadly rhombic/
16. quadrate/
17. transversely broadly rhombic/
18. transversely rhombic/
19. narrowly ovate/
20. ovate/
21. broadly ovate/
22. very broadly ovate/
23. depressed ovate/
24. narrowly obovate/
25. obovate/
26. broadly obovate/
27. very broadly obovate/
28. depressed obovate/
29. narrowly trullate/
30. trullate/
31. broadly trullate/
32. very broadly trullate/
33. depressed trullate/
34. narrowly obtrullate/
35. obtrullate/
36. broadly obtrullate/
37. very broadly obtrullate/
38. depressed obtrullate/
39. narrowly triangular/
40. triangular/

41. broadly triangular/
42. deltate/
43. shallowly triangular/
44. narrowly obtriangular/
45. obtriangular/
46. broadly obtriangular/
47. obdeltate/
48. shallowly obtriangular/
49. linear/
50. subulate/
51. <other - specify>/
52. filiform/

#35. <compound leaves> <leaflet> margin/

1. entire/
2. crenate/
3. serrate/
4. dentate/
5. denticulate/

#36. <compound leaves> <leaflet margins> <whether ciliate>/

1. ciliate/
2. not ciliate/

#37. <544> <compound leaves> leaflet blade <ultimate length, mm>/  
mm long/

#38. <545> <compound leaves> leaflet blade <ultimate width, mm>/  
mm wide/

#39. <C> <546> flowers <overall inflorescence colour>/

1. green/
2. white/
3. cream/
4. yellow/
5. orange/
6. red/
7. pink/
8. purple/
9. violet/
10. blue/
11. brown/
12. black/
13. other/

#40. flowers <shape> <casual character>/

1. 3-petal/
2. 4-petal/
3. 5-petal/
4. 6-petal/
5. pea flower/
6. wattle/
7. eucalypt/
8. daisy/
9. dandelion-daisy/
10. clustered/
11. other/
12. spikelet/

#41. <C> <175> flowers <arrangement>/

1. solitary/
2. aggregated <into inflorescences>/

#42. <C> <176> flowers in <inflorescence type>/

1. cymes/
2. racemes/
3. spikes/
4. heads/
5. umbels/
6. corymbs/
7. fascicles/
8. panicles/
9. verticils/
10. glomerules/
11. catkins/
12. <other - specify>/

#43. <plant sexuality>/

1. hermaphrodite <flowers bisexual, implicit>/
2. monoecious <separate male and female flowers on same plant>/
3. dioecious <plants with either all male or all female flowers>/
4. other <specify>/

#44. <186> <flowers> bracts <whether bracteate>/

1. present/
2. absent/

#45. <188> <flowers> bracteoles <whether bracteolate>/

1. present/
2. absent/

#46. <207?> floral whorls <presence or absence of perianth>/

1. two distinct whorls <calyx and corolla>/
2. intergrading calyx to corolla/
3. one whorl only (calyx) = corolla absent/
4. one whorl only (corolla) - calyx absent/
5. one whorl of uncertain origin <floral whorl or perianth>/
6. two whorls of uncertain origin <perianth in monocots>/
7. vestigial <reduced to bracts, scales, bristles, hairs or lodicules>/
8. absent/

#47. <202> floral tube <presence>/

1. present/
2. absent <implicit>/

#48. <219> calyx <number of parts>/ 5

#49. <222> calyx <whether parts joined or free>/

1. free <or almost so> <polysepalous>/
2. of joined and free segments <partially gamosepalous>/
3. joined <gamosepalous>/

#50. calyx <length, mm>/

mm long/ ∴ 1-2mm

#51. <236> corolla <number of parts>/ 5

segments/

#52. <240> corolla <whether parts joined or free>/

1. free <or almost so> <polysepalous>/
2. of joined and free segments <partially gamosepalous>/
3. joined <gamosepalous>/

#53. <246?> corolla <where segments joined, shape>/

1. rotate/
2. 2-lipped/
3. campanulate/
4. tubular/
5. urceolate/
6. trumpet-like/
7. spurred/
8. ligulate/
9. lobed/

#54. <255?> petals <or corolla lobes, whether incised>/

1. deeply bifid/
2. 2-lobed/
3. fringed/
4. entire/
5. emarginate/
6. several lobed/

#55. corolla <length, mm>/  
mm long/ 3-4mm

#56. <271> stamens <fertile, number>/ 5

#57. <269> staminodes <number>/ ✓

#58. <265?> stamens <freedom>/

1. free/
2. fused/
3. some fused and some free/

#59. stamens <insertion>/

1. opposite sepals/
2. opposite petals/
3. in continuous whorl/
4. on corolla tube/
5. in corolla throat/
6. free from corolla/

#60. <283?> anthers dehiscing <mechanism>/

1. by pores/
2. by vertical slits/
3. by transverse slits/
4. by valves/
5. <other, specify>/

#61. <316> ovary <gynoecium, constitution>/

1. monomerous <of a single carpel>/
2. apocarpous <of two or more free carpels>/
3. syncarpous <of two or more fused or partly fused carpels>/ <separating at maturity>

#62. <318> ovary <position>/

1. superior/
2. partly inferior/
3. inferior/

#63. <326> ovary <locule number of syncarpous gynoecia>/

locular/ 2

#64. <333?> styles <number>/ 2 <joined, splitting from base upwards>

#65. <336?> styles <insertion>/

1. apical/
2. lateral/
3. gynobasic/

#66. styles <whether simple or branched>/

1. simple/
2. branched/

#67. styles <number of branches>/

branches/

#68. <?379, 381, 382> fruit <type>/

1. legume/
2. loment/
3. follicle/
4. achene/
5. samara/
6. nut/
7. drupe/
8. berry/
9. mericarps/
10. capsule/
11. silicule/
12. siliqua/
13. caryopsis/
14. <other, specify>/

#69. <?378, 380> fruit <whether dehiscent>/

1. dehiscent/
2. indehiscent/

#70. fruit <length, mm>/

mm long/ ca 2mm

#71. fruit <width, mm>/

mm wide/

#72. <text> <complete description, added only at completion of flora>/

