

What are CRCs?

Cooperative Research Centres

- Collaborative organisations involving Universities, Industry and users of research
- About 40 CRCs Australia wide
- Focus on applied research that have real benefits and outcomes including commercial products.
- Aim to be self funding



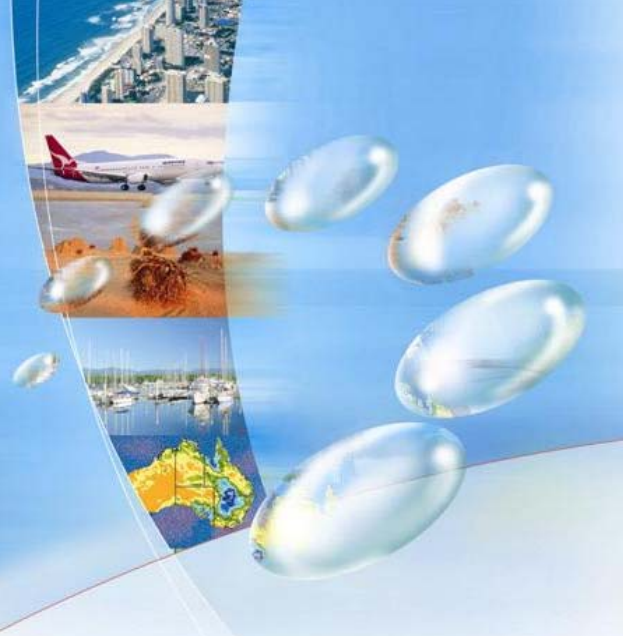
CRC for Sustainable Tourism

- **Established 1997 to maximise social, environmental and economic benefits of tourism**
- **Refunded 2003 - \$27m**
- **HQ based at Griffith University QLD but with Networks in all States and Territories**
- **WA membership - Curtin University, Edith Cowan University, Murdoch University, CALM and WATC.**



CRC for Sustainable Tourism, Mark 2

- **Sustainable Destinations**
- **Sustainable Resource Management**
- **Sustainable Enterprises**



Research programs & user partners

Programs

User Partners

SUSTAINABLE DESTINATIONS

TOURISM COMMISSIONS
(All 9 Commonwealth, states & territories commissions)
+ Local Authorities; Companies; Conservation agencies

SUSTAINABLE ENTERPRISES

SMTEs; INDUSTRY ASSOCIATIONS; COMPANIES;
+ Tourism commissions; Conservation agencies.

SUSTAINABLE RESOURCE
MANAGEMENT

CONSERVATION AGENCIES
(from all 6 states) + Tourism Commissions; Companies;
Industry Associations; Local authorities



Environmental Science | Modelling & Risk | Engineering & Design | Information & ICT | Tourism Management

Discipline foci

Types of Funding

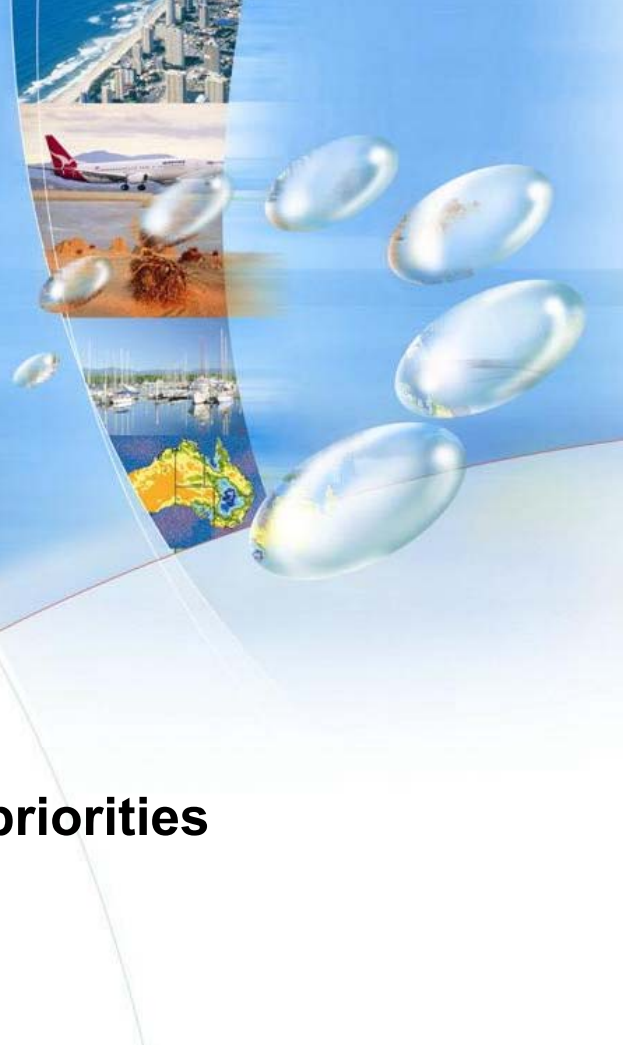
- **Strategic Research**
- **Tactical Research**



CRC for Sustainable Tourism

2003/04 Strategic Research

- **Address key research priorities**
 - 14 areas
 - 42 topics
- **Scoping studies**
- **Collaborative**



CRC for Sustainable Tourism

Research topics relevant to CALM

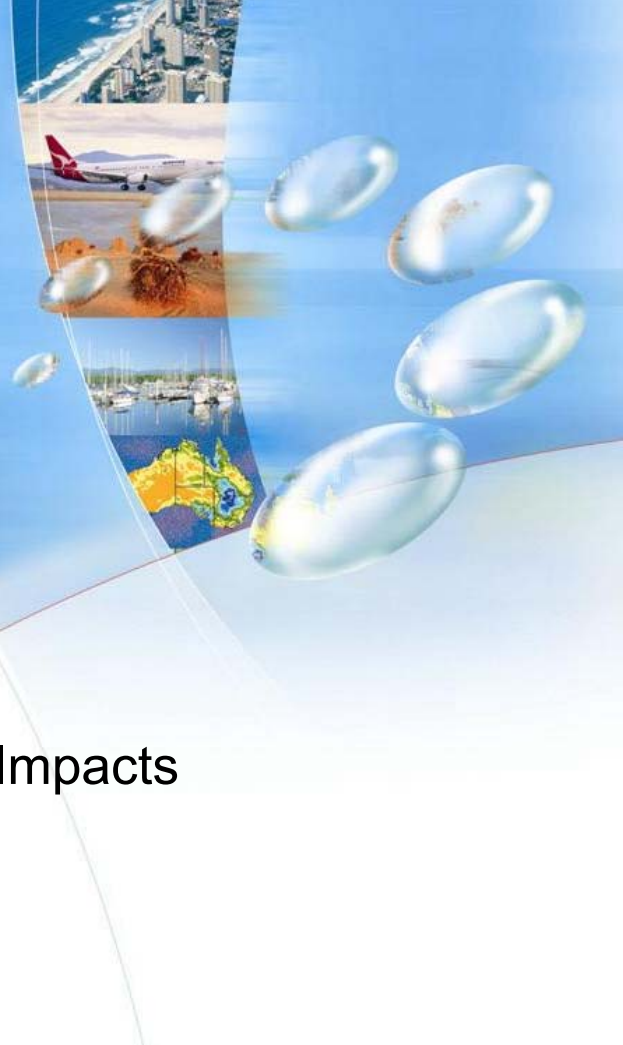
- Evaluation Tools (Economic)
- Tourism Infrastructure and Environmentally sustainable design
- Destination and Protected Area models
- Technology - (Visitor Servicing)



CRC for Sustainable Tourism

Research topics relevant to CALM (cont)

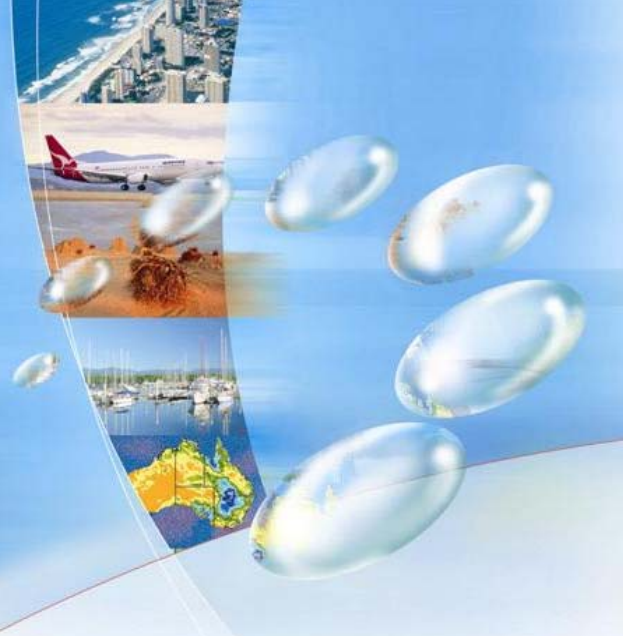
- Visitor Management and Ecosystem Impacts
 - Impacts on plants/vegetation
 - Impacts on wildlife
 - Impacts of high impact activities
 - Impacts on aquatic systems
 - Interpretation
 - Sustainable Visitor Use of PAs



CRC for Sustainable Tourism

Completed Projects

- Tapestry project (Di Lee)
- Sustainable Forest Ecotourism in SW forests of WA (Rachel Goff)
- Impacts of camping in SW forests (Amanda Smith)



CRC for Sustainable Tourism

Ongoing Projects (2002-03)

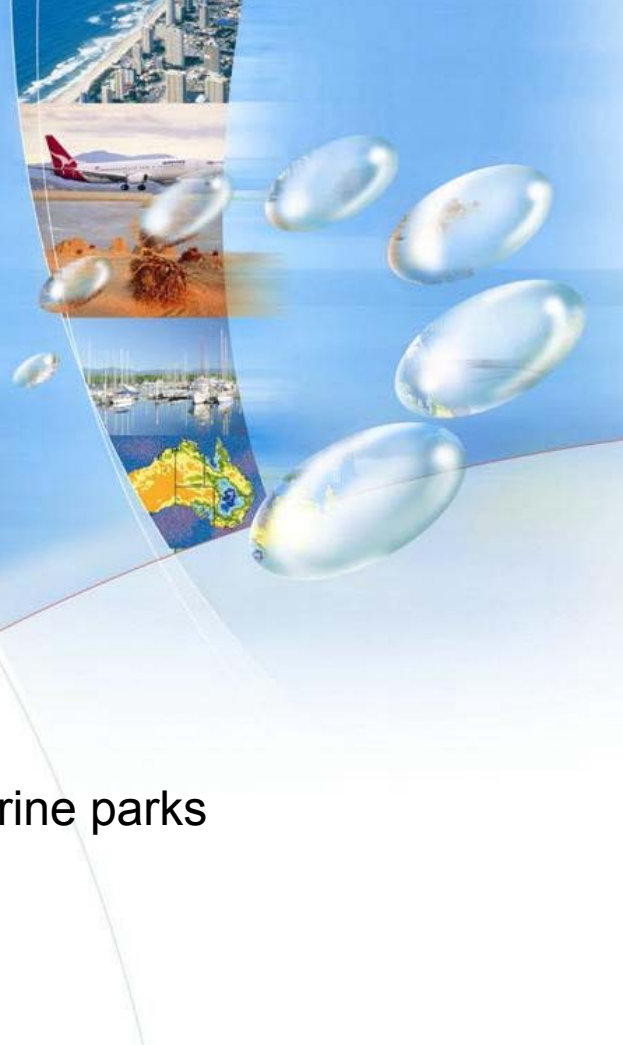
- Greater Dryandra tourism development (small marsupial study)
- Human usage data collection systems
- Tourism impacts of human interaction with Sealions
- Causes of impact creep
- Building better collaborative management between tourism operators and protected area managers.



CRC for Sustainable Tourism

Ongoing Projects (2002-03)

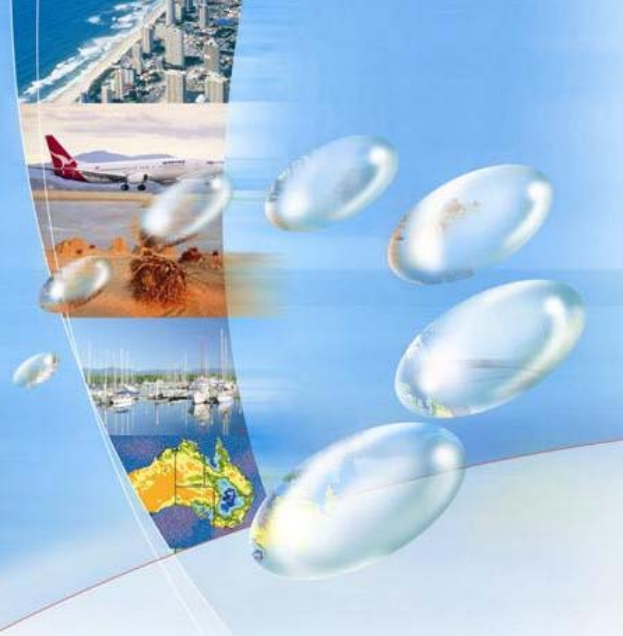
- Review of accreditation programs
- Economic value of national parks, forests & marine parks
(Tactical)
- Issues and impacts of tourism development on communities
- Sustainable accommodation development in remote areas



CRC for Sustainable Tourism

New Projects (2003-04)

- Performance measurement for visitor use of protected areas
- Social, environmental and economic aspects of wildlife tourism icons ??????
- Location aware information systems ??????
- Tactical ????? Ideas ?????



CRC for Sustainable Tourism

Conclusion

- CRC provides opportunity to attract significant research \$ into WA
- Need to work collaboratively with other States
- Need research ideas aligned to research priorities
- Diffusion of research results
- COE

