

8 9:18 PM

Environmental Offsets in the SW Region

applications

examples

issues

Offset v/s Best Practice

Last resort option – impact avoidance is the goal.

- Land Acquisition
- Cash Payment (species mgt, site mgt, research/monitoring, strategic documents)
- Rehabilitation thru to Reconstruction
- Site Survey's
- Onsite weed & feral control, fencing
- Translocations & monitoring
- Topsoil mgt, In-situ plantings
- Site–redesign, increases POS
- In-situ trials, nest boxes, rope bridges, fauna crossings, fauna excluders

LUP Offsets applied to:

- **Mining** (Mineral Sands, Basic Raw Materials)
- **Utilities** (MRD, Water Corp, Western Power)
- **Commercial tourism developments**
- **Large scale urban & industrial subdivisions**
- **Medium scale subdivisions** (10+ lots)
- NB: No meaningful application to small residential subdivisions (1-2 lots)



SW Examples 2005 onwards

WRP's

- Habitat reconstruction (Dawson 3ha, Cape View ~7ha, Peppermint Park 20ha)
- Monitoring Program (Water Corp 10yr prog)
- Corridor creation (MRD Bsn Bypass ~4ha)

Black Cockatoos

- Habitat reconstruction (Smith's Beach~3ha)

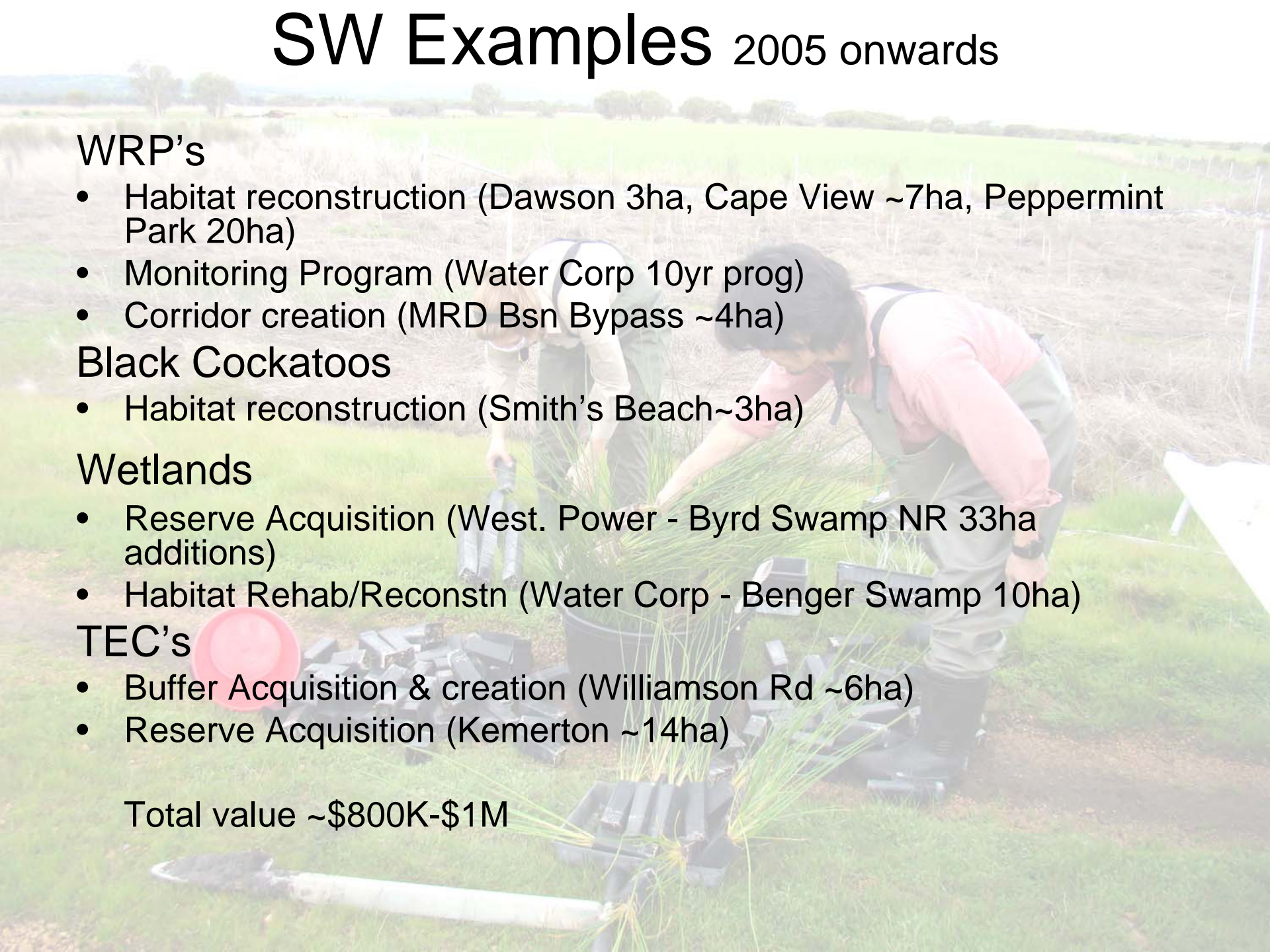
Wetlands

- Reserve Acquisition (West. Power - Byrd Swamp NR 33ha additions)
- Habitat Rehab/Reconstn (Water Corp - Bengier Swamp 10ha)

TEC's

- Buffer Acquisition & creation (Williamson Rd ~6ha)
- Reserve Acquisition (Kemerton ~14ha)

Total value ~\$800K-\$1M



Offset Issues

- Outcomes v/s \$ contributed: full veg suite never implemented.
- Determining offset ratio's.
- Timescales for rehab (defining & measuring success) V/S proponent's obligations. build & move on !
- DEC oversight costs – staff time needs to be covered.
- Fragmented Landscapes
 - - Land price excludes acquisition (i.e. coastal hotspots),
 - - “Like for Like” and on “Secure Tenure” – problems
 - - Suitable sizes esp. small areas in good condition don't exist.
- Non Fragmented Landscapes
 - - The utility of rehab – black cocky foraging habitat in the middle of forest !
- Rehab/recnstrn - least desirable option for cons mgr's.
- Improving the resilience/condition of existing reserves is higher priority (weed, disease, access control)