

# PHOTOGRAPHS

RELATED TO

FIRE RESEARCH

W.P. 562/61

- CAREY BLOCK -

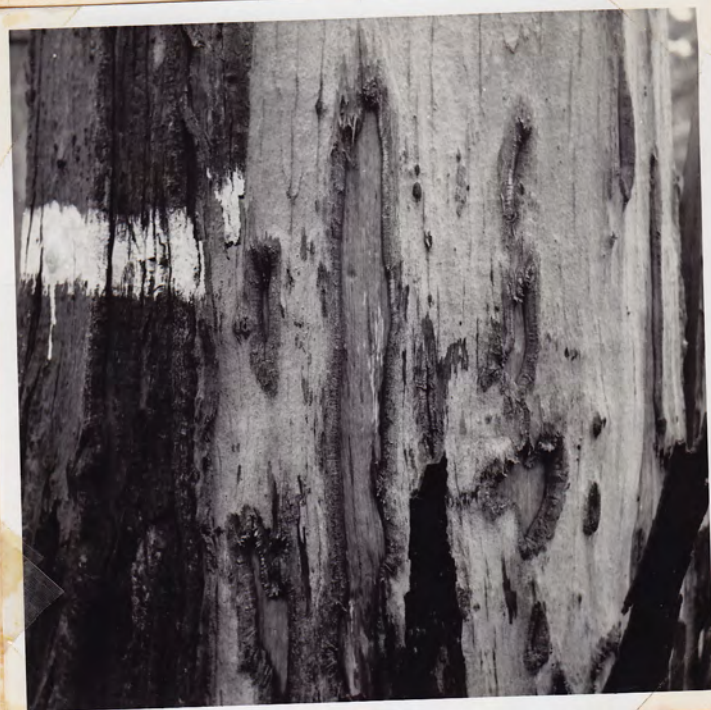
Date: 17/4/62

Date of Burning: 18/2/61

1. Tree N°401 Plot 10: CAREY BLOCK.  
 Date: 17/4/62.  
 Date of Burning: 18/2/61  
 Defoliating bark.

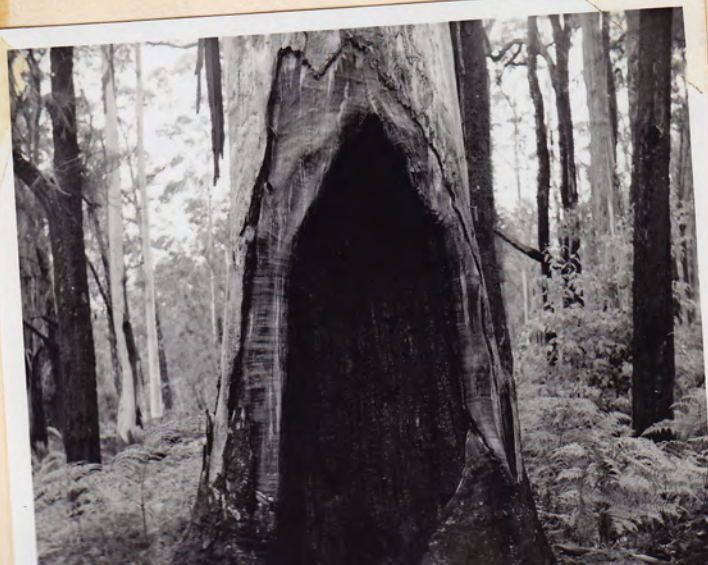


2. Tree N°404 Plot 10  
 CAREY BLOCK  
 Severe cambial lesions at  
 4'3" →



- ← 3. As for N°2

4. Tree N°406 Plot 10  
 Hollow butt and  
 associated dry side. →





5. Tree N°404 Plot 10  
Cambial lesions at 4'3" and old  
cambial damage.

6. Plot 10: General view of  
undergrowth recovery  
looking N.E. →



← 7. Tree N°408? Plot 10.  
Epicormic shoot developing  
adjacent to cambial lesion

8. Tree N°480 Plot 6  
Recovery of defoliated crown →





9. Plot 8 - Prolific Karri regeneration adjacent to Casuarina trees - not ashbed but has had heavy dressing of ash.

10. Tree N°478 Plot 8  
Epicormic development on →  
bole of tree.



12. Plot 2 - Fire killed undergrowth with retention of full canopy of overstory →

11. Plot 3? - Cambial lesion, ←  
on young Karri tree



Tree N° 387 - extension  
found but 4  
have again

- CROWEA BLOCK -

Date: 19/4/62

Date of Boring: 6/3/61

ion  
ng

el  
3"

lling



1. Tree N°381 - extensive lesion  
ground level to 3' in young  
karri regrowth.

2. Tree N°381 - showing  
crown of tree with defect  
as in photo 1.



3. Tree N°500 - Severe cambial  
lesion ground level to 5'3".  
Intense heat caused by  
proximity to log from felling

4. Tree N°490 - cambial lesion  
presumably caused by falling  
limb showing fungal fruiting  
bodies



5. Plot A - general view  
of plot and stand  
characteristics



↑ Tree N°490



6. Plot E - fire damaged  
young Karri subsequently  
infested with borers - broken  
off.

7. Plot E - close up of broken zone  
in photo 6 showing  
secondary infestation  
with borers

