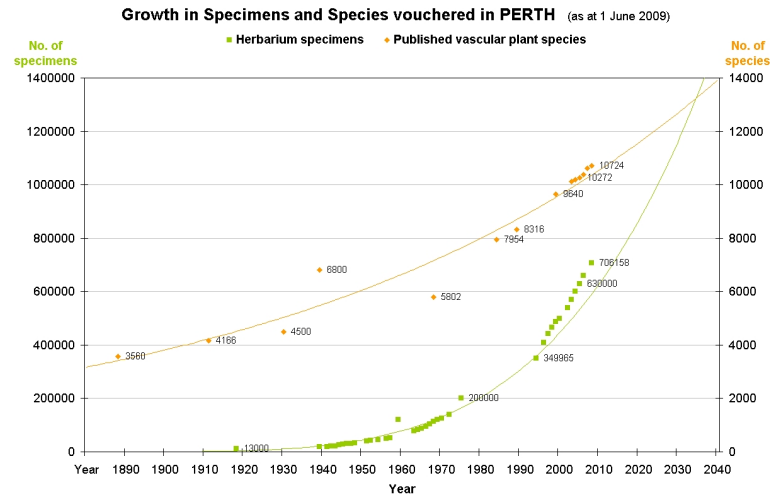


# Plan for arrangement of the Western Australian Herbarium specimen collection in the DEC Biodiversity Science Centre, according to the APGIII Phylogeny – 2009

Figures based on WAHERB specimen data as at 1 June 2009 (= 706,158 specimens) and an estimated 2040 figure of 1,412,316 specimens (multiplier = 1,412,316/706,158 = 2.0)  
 Cladogram based on APG III (2009, *in press*), ~~~Classification for the orders and families of flowering plants: APG III~~~ *Botanical Journal of the Linnean Society* **1xx**: xxx–yyy.  
 Non-angiosperm data based on Judd, W.S. *et al.* (2002), *Plant Systematics: A Phylogenetic Approach* 2<sup>nd</sup> ed<sup>n</sup>, Sinauer Assoc; (ISBN: 0878934030).

**SUMMARY OF SPECIMEN DISTRIBUTION BY GROUP**

Group	2009	2040	Vault
Fungi	36967	73934	Vault1
Algae	22479	44958	Vault1
Bryophytes	8348	16696	Vault1
Gymnosperms	1975	3950	Vault1
Pteridophytes	3514	7028	Vault1
Basal angiosperm	315	630	Vault1
Magnoliids	1773	3546	Vault1
Monocots	39192	78384	Vault1
Commelinids	68716	137432	Vault1
Eudicots	50209	100418	Vault2
Core eudicot I	12005	24010	Vault2
Eurosids I	136317	272634	Vault2
Rosids	95671	191342	Vault3
Eurosids II	42228	84456	Vault3
Core eudicot II	45779	91558	Vault4
Asterids	19093	38186	Vault4
Euasterids I	47434	94868	Vault4
Euasterids II	75670	151340	Vault4
<b>Totals</b>	<b>707685</b>	<b>1415370</b>	



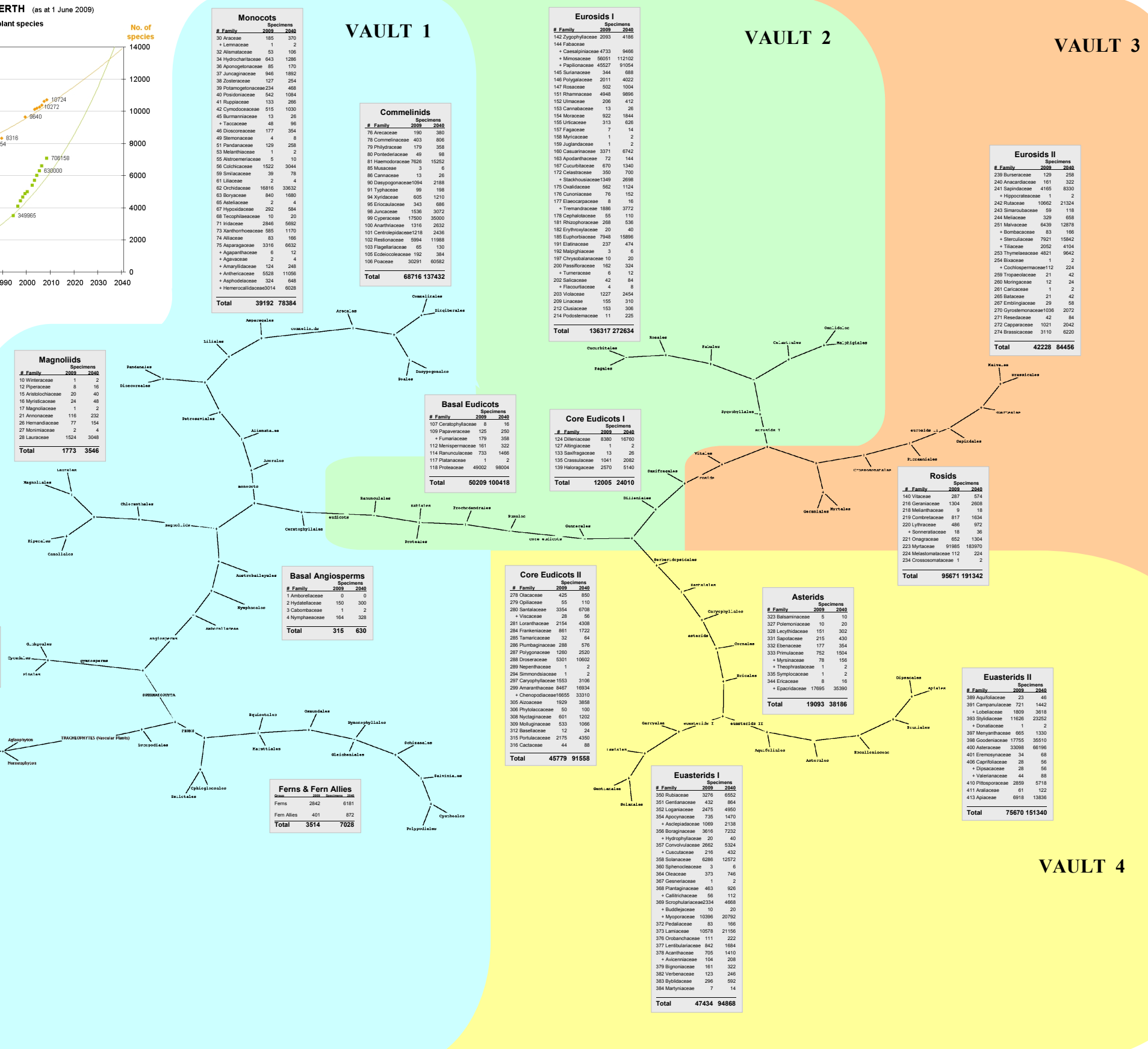
**SUMMARY OF SPECIMEN DISTRIBUTION BY VAULT**

Vault	2009	2040
Vault 1	183279	366558
Vault 2	196531	393062
Vault 3	137899	275798
Vault 4	187976	375952
<b>Totals</b>	<b>707685</b>	<b>1415370</b>

**Sub-collections \***

Type	2009	2040
Botanical	8051	17509
(& wood)	2040	4437
<b>Total</b>	<b>10091</b>	<b>21946</b>

\* numbers currently incorporated under relevant families



**Fungi (incl. Lichens)**

Group	2009	2040
Fungi	21412	42824
Lichen	15555	31110
<b>Total</b>	<b>36967</b>	<b>73934</b>

**Algae**

Group	2009	2040
Algae	22479	44958
<b>Total</b>	<b>22479</b>	<b>44958</b>

**Bryophytes**

Group	2009	2040
Mosses	6451	12902
Liverworts & Hornworts	1897	3794
<b>Total</b>	<b>8348</b>	<b>16696</b>

**Gymnosperms**

Group	2009	2040
Coniferales	1616	3232
Cycadales	244	488
<b>Total</b>	<b>1975</b>	<b>3950</b>

**Ferns & Fern Allies**

Group	2009	2040
Ferns	2842	5684
Fern Allies	401	802
<b>Total</b>	<b>3514</b>	<b>7028</b>