

Bilby

Macrotis lagotis



Department of
Parks and Wildlife



Dr Manda Page
Principal Zoologist
Species and Communities Branch

Species and Communities Branch

Management and protection of threatened and priority fauna in WA through:

- ❖ Coordinate and support of recovery programs (plans and teams)
- ❖ Develop/review fauna management plans, monitoring programs, recovery plans
- ❖ Review and process for fauna translocations
- ❖ Review of Reg 17 and Reg 15 license applications
- ❖ Coordination and support Animal Ethics Committee
- ❖ Provide advice on fauna matters as required (environmental impact assessment, clearing applications etc)
- ❖ Threatened fauna listing process and changes to the conservation status of already listed species
- ❖ Administration of the Threatened and Priority Fauna Database and the Fauna Survey Returns System



Department of
Parks and Wildlife



Databases

□ Threatened and Priority Fauna Database

Collation of existing available records. Includes sign, cameras, surveys, trapping, specimens, observations etc. Can be lodged by anyone on form, manually entered

□ Fauna Survey Returns

Presence data from Reg 17 return system. It is a license condition. Entered online by licensee.



Department of
Parks and Wildlife



NatureMap

- Online public data viewing portole
- Includes data from the Threatened and Priority Fauna Database and the Fauna Survey Returns System
- Includes other databases (e.g. museum, fauna survey returns, historic surveys etc.)
- <http://naturemap.dec.wa.gov.au>

The screenshot displays the NatureMap website interface. At the top, it features the Department of Environment and Conservation logo and the NatureMap title. A search bar is visible with the text 'Search DEC...' and a 'Go!' button. Below the search bar, there are navigation links for 'Home', 'Themes', 'Maps', 'Tools', and 'Help'. The main content area is titled 'Species By Name' and includes a search results table and a map of Western Australia.

Search Results

Name: *Cassin's quail*; Current Names: *Unifacies*; Core Databases: *Unifacies*

	Species	Records
Total	1	1/4/

Species List

[Cassin's quail](#) Northern Quail **T**
1 species, 1747 records

Conservation Status

T - Rare or likely to become extinct
X - Presumed extinct
IA - Protected under international agreement
S - Other specially protected fauna
1 - Priority 1
2 - Priority 2
3 - Priority 3
4 - Priority 4
5 - Priority 5

The map on the right shows the distribution of the species in Western Australia, with numerous blue markers indicating recorded locations. The map includes a scale bar and a 'Customise Map' button.

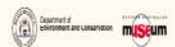
wa.gov.au

DEC Home Privacy Disclaimer Copyright Registration Feedback

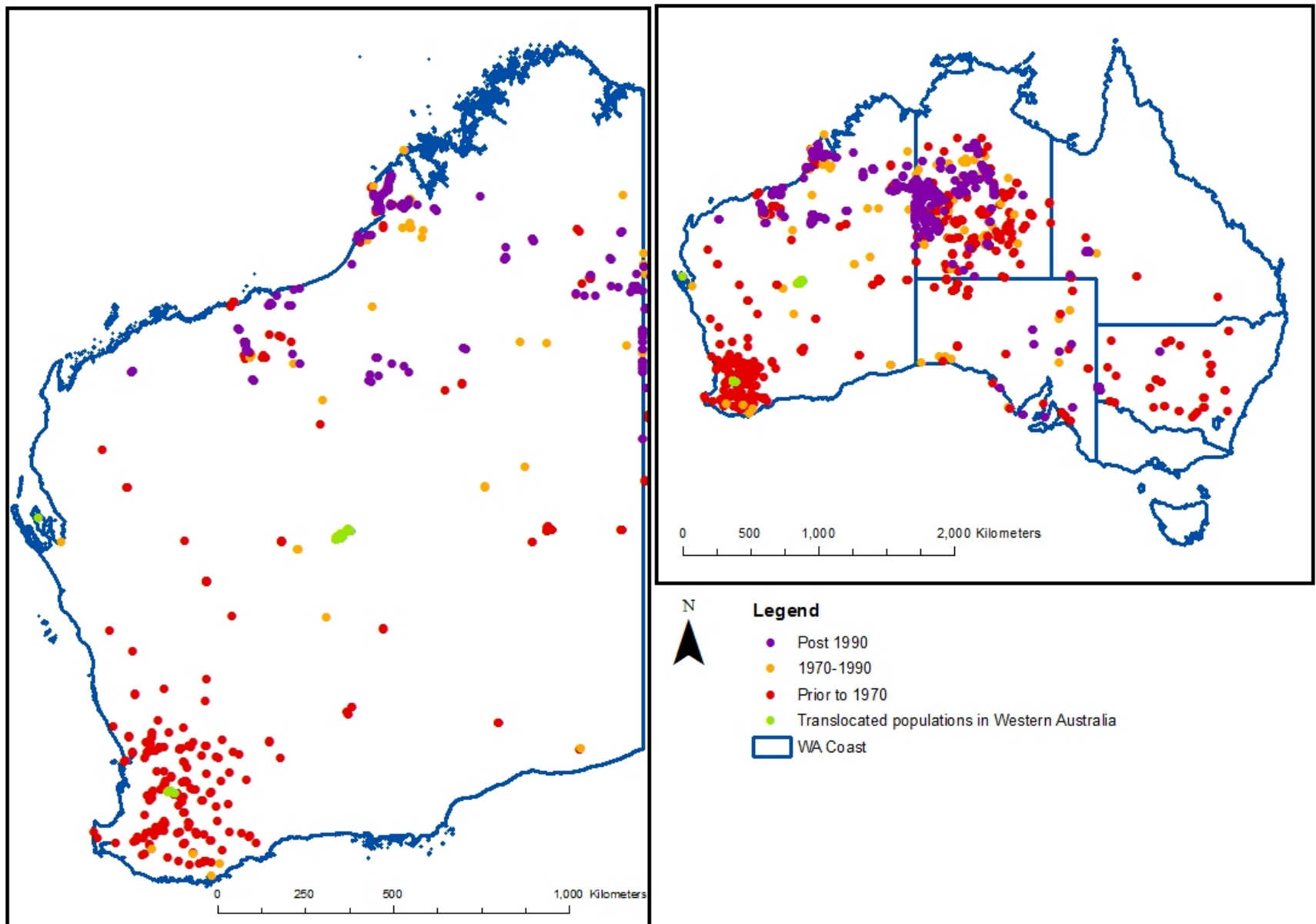
Except where otherwise stated, all contents copyright Government of Western Australia. All rights reserved.



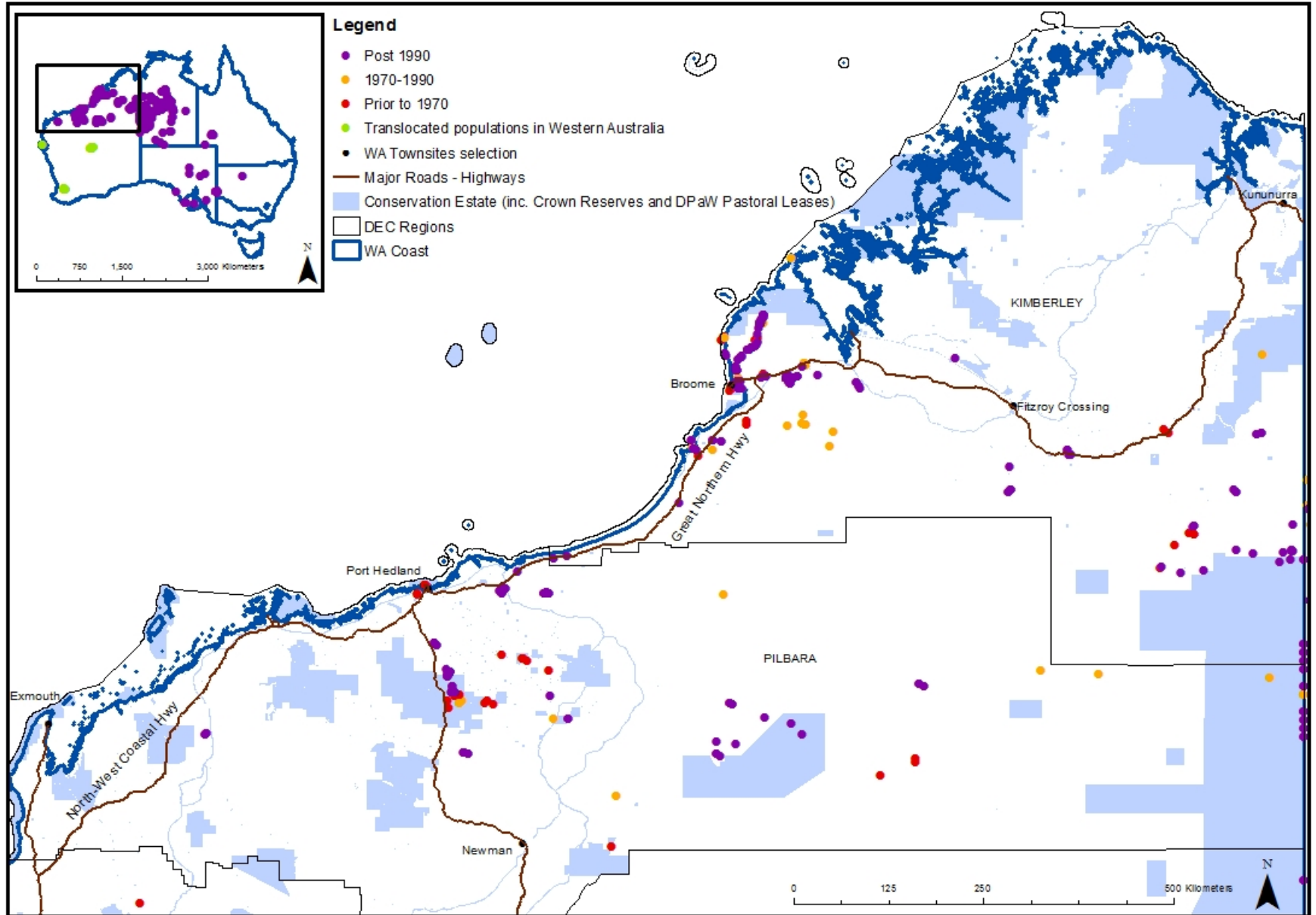
Department of
Parks and Wildlife



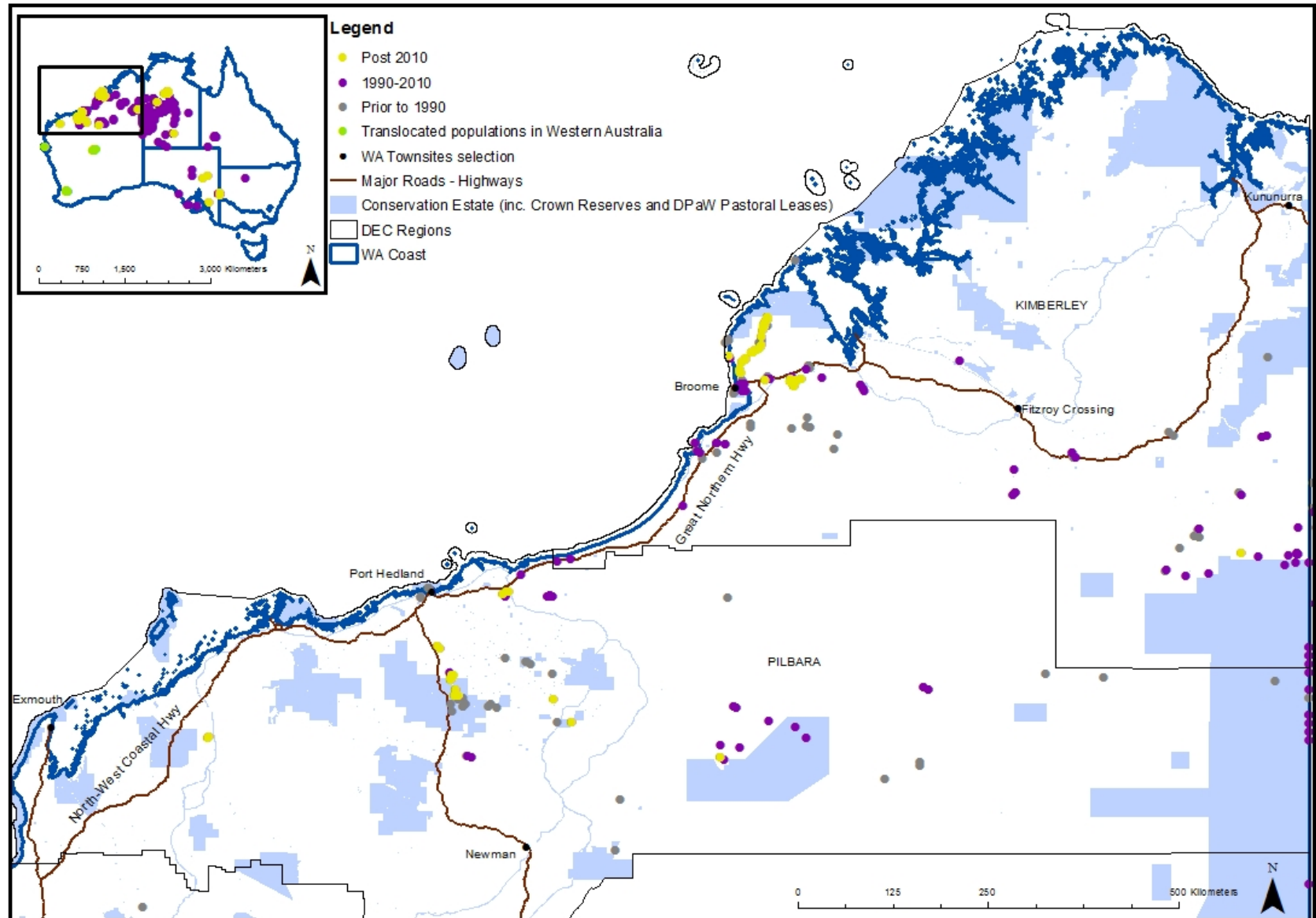
Bilby Records - WA



Bilby Records Pilbra



Bilby Records – Recent Increase



Limitations

- ❑ Species occurrence only
- ❑ Relies on various sources of information
- ❑ Varying degree of accuracy, quality and completeness
- ❑ Bias of survey effort
- ❑ No information on methods used
- ❑ No null or negative results captured
- ❑ No dot does not mean not present
- ❑ Often spatial inaccuracies (input of coordinates)
- ❑ Observation, sign, photos do not have to be reported on Reg 17
- ❑ Data often not screened or checked
- ❑ *Some of these issues are being dealt with in the Pilbra Threatened Fauna Database*



Recovery Planning / Actions

- ❑ Recovery plan out of date (2006)
- ❑ WA recognise and support development of new plan
- ❑ No State taking responsibility to review/draft plan
- ❑ Last meeting in NT in 2011
- ❑ Highlights the need for WA to survey and monitor wild populations (distribution, trends etc)
- ❑ Need to develop standard methods and ensure capture of data and existing efforts

