

LIBRARY

Department of Biodiversity,
Conservation and Attractions

This PDF has been created for digital preservation. It may be used for research but is not suitable for other purposes. It may be superseded by a more current version or just be out-of-date and have no relevance to current situations.

AROUND THE LOOP

This 6 hour walk begins and ends at Nature's Window at the Loop. This trail is not marked but the easiest route is as follows. From Nature's Window, walk east along the cliff top to the first river bend, then down along the ledges and floodplain at waterlevel to return to Nature's Window, keeping the river to your right at all times.

RIVER GORGE HIKES

Allow 4 days of strenuous hiking to cover the 38 km route through the gorge from Ross Graham Lookout to the Loop. There are no marked trails and river crossings will be necessary.

Shorter 2 day gorge hikes may be made from Ross Graham Lookout to Z Bend or from Z Bend to the Loop.

RAFTING AND CANOEING

Soon after heavy rains, the Murchison River becomes deep enough to navigate. Only the experienced and well equipped should attempt this hazardous journey and park rangers should be contacted for advice about making this trip.

PLEASE NOTE

- ❖ Due to the hazardous terrain, groups undertaking long hikes should consist of at least 5 experienced people. This is the smallest group considered self-sufficient in an emergency.
- ❖ Overnight groups must notify a park ranger before and after making the trip.
- ❖ All rubbish must be carried out of the gorge.

CARING FOR KALBARRI

STAY COOL

Don't light fires. Free gas barbeques are available at some picnic areas and visitors may use their own gas appliances anywhere in the park.

BE CLEAN

Put your litter in bins or take it with you. Discarded scraps attract feral pigs and goats, which destroy the habitats of native animals.

PROTECT ANIMALS AND PLANTS

Firearms and pets are not permitted in the park.

VISITOR FEES

Thank you—your fee will help protect the park and improve its facilities. Fees can be paid at the Kalbarri Tourist Centre in Grey Street, or at the Park Registration Station on the road to The Loop and Z Bend. Exact change in coins is needed for the machine at the Station. Some fee exemptions apply.

FURTHER INFORMATION

CALM officers will gladly help if you require information or assistance.

Kalbarri National Park
PO Box 37 Kalbarri 6536
Telephone (08) 9937 1140
Fax (08) 9937 1437

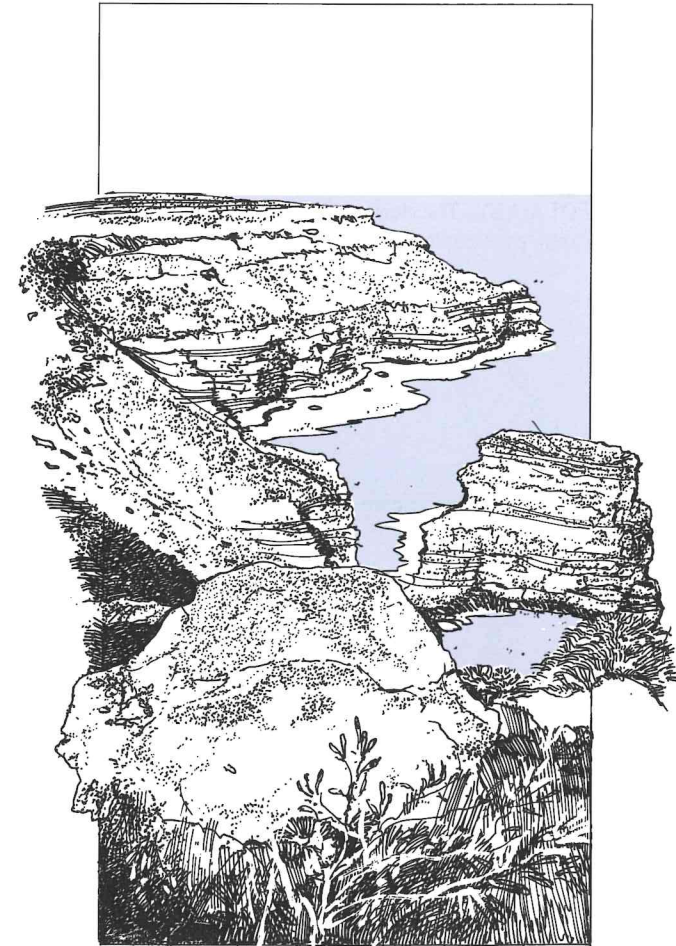
Ranger in Charge (08) 9937 1192
Assistant Ranger in Charge (08) 9937 1178

Midwest Regional Office of CALM
PO Box 72 Geraldton 6530
Telephone (08) 9921 5955

Department of Conservation and Land Management
State Headquarters
50 Hayman Road Como WA 6152
Telephone (08) 9334 0333

KALBARRI

National Park

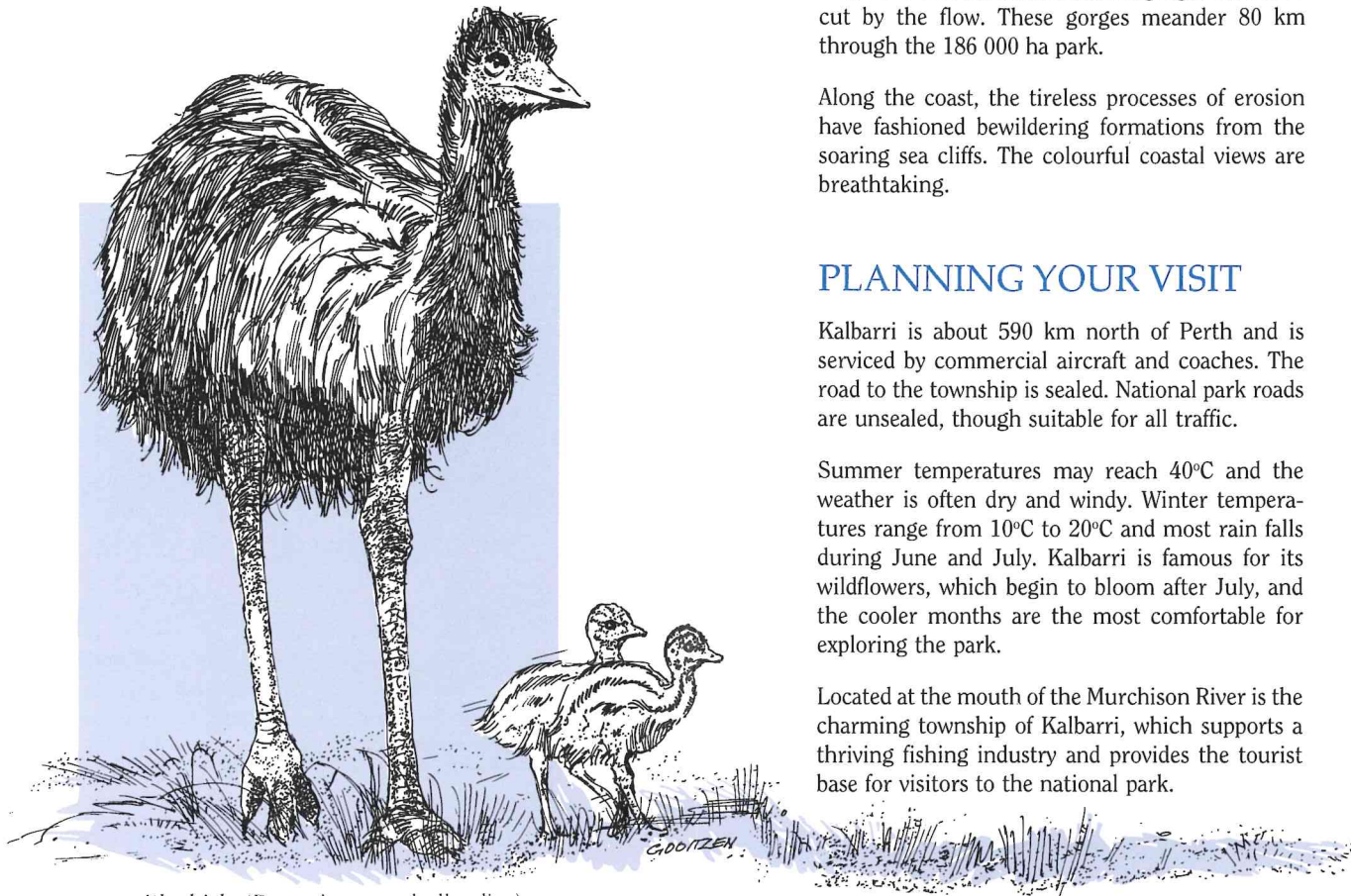


DEPARTMENT OF CONSERVATION
AND LAND MANAGEMENT

KALBARRI NATIONAL PARK

The many and varied features of Kalbarri provide visitors with an array of things to see and do.

Marvel at nature's ability to carve the landscape. Explore the depths and heights of the river gorges and sea cliffs. Admire the floral beauty of the vast, rolling sandplains. Discover the intriguing cultural history of the area.



emu with chicks (Dromaius novaehollandiae)

DRAMATIC LANDSCAPES

The spectacular scenery of Kalbarri National Park is the result of many millions of years of geological formation. Beneath this countryside, the geology consists of deep, horizontal bands of multi-coloured sands which were deposited in layers some 400 million years ago. The resultant sedimentary rock formation is called the Tumblagooda Sandstone.

As the Murchison River carves its way to the sea, magnificent red and white banded gorges have been cut by the flow. These gorges meander 80 km through the 186 000 ha park.

Along the coast, the tireless processes of erosion have fashioned bewildering formations from the soaring sea cliffs. The colourful coastal views are breathtaking.

PLANNING YOUR VISIT

Kalbarri is about 590 km north of Perth and is serviced by commercial aircraft and coaches. The road to the township is sealed. National park roads are unsealed, though suitable for all traffic.

Summer temperatures may reach 40°C and the weather is often dry and windy. Winter temperatures range from 10°C to 20°C and most rain falls during June and July. Kalbarri is famous for its wildflowers, which begin to bloom after July, and the cooler months are the most comfortable for exploring the park.

Located at the mouth of the Murchison River is the charming township of Kalbarri, which supports a thriving fishing industry and provides the tourist base for visitors to the national park.

SERVICES AND FACILITIES

Within the national park, toilets and picnic facilities are provided at places shown on the map.

There are no camping areas in the national park but a full range of accommodation is available in the township. Kalbarri also offers a selection of shops, fuel outlets, entertainments and services including a bush nursing post, medical centre, police station, post office and banking facilities. Park tours and other visitor activities operate from the town. Accommodation and tourist agencies can be contacted for bookings and further details.

COMFORT AND SAFETY



Drinking water is not available in the park so always carry your own supply.



Massive freak waves have claimed lives. Walk along the higher coastal ledges.



Cliff edges may be hazardous so be cautious and wear sturdy shoes.

PARK DISCOVERY

Signs mark short walks from the carparks to the best view points. Longer hikes are more difficult and include the following.

MUSHROOM ROCK NATURE TRAIL

This is a leisurely 2 hour return walk. Information is available along the track to explain the botanical and geological features.

COASTAL TRAIL

Allow 3 to 5 hours to make this one-way 8 km hike. Arrange to be dropped off at Eagle Gorge and picked up at Natural Bridge. Enjoy the magnificent seascapes from the heights of the cliffs.

COASTAL CLIFFS

RED BLUFF - The coastal cliffs to the north extend over 200 km to Shark bay and are notoriously rugged.

MUSHROOM ROCK - See how the natural forces of wind, water and even worms have created weird yet delicate shapes.

RAINBOW VALLEY - Sands and silts containing an assortment of minerals have layered, compacted and weathered to form this spectrum in stone. Rainbows may be seen in the sea mist.

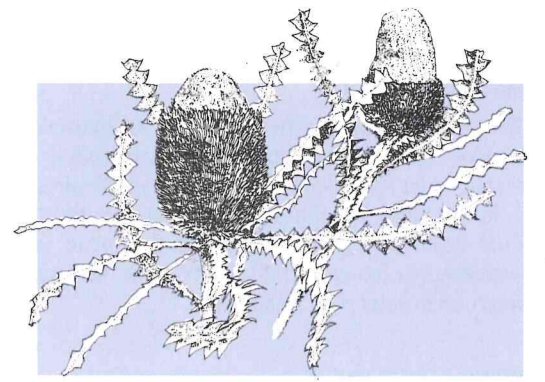
POT ALLEY - The view south from the carpark truly captures the splendour and beauty of this coast.

EAGLE GORGE - Enjoy the panorama from the crest or wander down into the tranquil depths of the gorge where you will discover a delightful beach.

SHELLHOUSE AND GRANDSTAND - The continual pounding of the Indian Ocean claims massive chunks of this soft limestone coast, leaving remnant cliff formations.

ISLAND ROCK - The resilient Island Rock was once part of the shoreline, but now stands as a solitary 'sea stack'.

NATURAL BRIDGE - As the coastline slowly yields to the force of the ocean, the fracturing and decaying of the cliffs sculpt some rather precarious rock formations.



woolly orange banksia (*Banksia victoriae*)

RIVER GORGES

THE LOOP - Several lookouts are positioned around The Loop to give different perspectives on the switch-back course of the Murchison River. Nature's Window is a natural rock arch which superbly frames the upstream view, a moderately easy 400-metre walk from the car park.

Z BEND - It is a moderately easy 500 m walk to the rock lookout which overhangs the Murchison. Visitors should take extreme care in this gorge risk area.

HAWKS HEAD - Enjoy the majestic gorge view from the picnic area.

ROSS GRAHAM LOOKOUT - This gorge is relatively shallow and it is an easy wander down to the river pools.

