

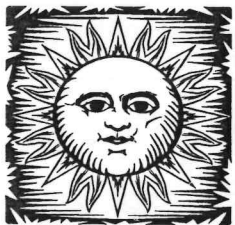
LIBRARY

Department of Biodiversity,
Conservation and Attractions

This PDF has been created for digital preservation. It may be used for research but is not suitable for other purposes. It may be superseded by a more current version or just be out-of-date and have no relevance to current situations.

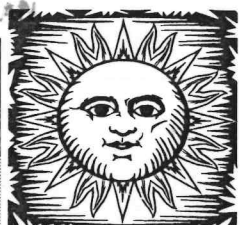
008712

CALL LIBRARY ARCHIVE
NOT FOR LOAN



YANCHEP

NATIONAL PARK



Summer 1997 Activity Guide

Aboard the MV Kiwanis

Quality Crafts!



A visit to Yanchep National Park is not complete without taking a leisurely cruise around Loch McNess aboard the MV Kiwanis.

Located on the upper level of McNess House Visitor Centre is the Yanchep Rose Quality Arts & Crafts Gallery.

The gallery displays paintings and craft work, created by local hobbyists, with a distinctive traditional, environmental or park theme.

From the first public meeting held in 1995, to gauge interest in establishing a co-operative of local craft hobbyists, Yanchep Rose Quality Arts & Crafts has flourished.

Since December 1996, when McNess House Visitor Centre was re-opened, volunteers have maintained a high quality display of craft. The success of the venture is a tribute to these people. The visitors book shows compliments from visitors from all over the world.

The cruise aboard MV Kiwanis takes you around the fringe of Loch McNess exploring this pristine wetland, and discovering the varying plant habitats and resident fauna. The skipper, a retired park ranger and professional coxswain has a great number of stories about the park, the lake and considerable knowledge on the local flora and fauna.

The MV Kiwanis carries on a proud tradition of launch trips around Loch McNess. A series of 3 launches have been used for some 50 years until the last launch, Miss Yanchep, was retired in 1986. The Kiwanis Club of Perth now operates the tours raising funds for various charities around Perth.

Kiwanis is a world wide service organisation of people who want

to improve their communities. They perform voluntary community service and run some very different types of projects. They own and operate the equipment for Blue Light Disco's, put up fences and stable at the riding for the disabled, build wheel chair carriers for disabled people, supply manpower and assist with the organising of the Australia Day Concert held on the Esplanade in Perth, every year.

Fashion parades are held every year to raise funds for different charities, and are introducing into schools the character education, Just Say 'No' and Terrific Kids awards to help and develop our youth.

Some of the organisations they have helped include, Cystic Fi-

brosis Association, Head Injured Society, Princess Margaret Hospital, and Riding for the Disabled.

'MV Kiwanis' has been designed specifically to cruise the shallow waters of Loch McNess, licensed to carry 36 passengers and able to embark moderately disabled persons. All proceeds contribute to the charitable work of the Kiwanis Club of Perth and is operated by volunteers from the club.

Cruises run approximately every 30 minutes Sundays and Public Holidays. The cost - a mere \$2 for adults and \$1 for children. For school excursions, coach and group bookings please telephone the skipper, 'Ron' on 9561 1212.

Distinctive traditional environmental or park theme

Yanchep Rose Quality Arts and Crafts also have a display at the Two Rocks Shopping Centre.

With the opening of the new road from Two Rocks to Wanneroo Road tourism to the area will expand, and the McNess House venture will become an even greater attraction to the Park.

Be sure to visit the Yanchep Rose Quality Arts & Crafts gallery next time you visit the park.

14100041



Gloucester Lodge in the 1930's

Visitor Fees to Increase

From January 1, 1998, National Park visitor and camping fees will increase.

WA's National Parks are highly valued natural assets and contain some of the State's greatest attractions. Visitor fees help fund improvements in these parks to enhance the enjoyment of visitors.

The new fees will be \$8 per car and \$3 per motorcycle for day passes with a concession of \$3 per car for Seniors Card and aged pension card holders. All Parks Annual Pass \$45, Gold Star Pass

\$64, Four-week Pass \$20 and the Annual Local Parks pass \$15.

The camping fee will be \$8 for one to two people per site per night, \$4 for each additional person; children under 16 years \$1 a night.

Visitor and camping fees will be introduced at four additional parks. These are Mirima (Hidden Valley), Fitzgerald River National Park, Leeuwin Naturaliste National Park and D'Entrecasteaux National Park.

Take a Trip to Yesteryear

Gloucester Lodge Museum was constructed as a guest house by 'sustenance' workers in the early 1930's. Opening in 1933 the building was known as the 'Lodge' or 'Yanchep Lodge'. In October 1934 the Duke of Gloucester stayed overnight and the name was changed to Gloucester Lodge.

On 29th November 1979 the Gloucester Lodge was opened as a District Museum and houses the City of Wanneroo's Museum Collection.

The displays mirror life in the Wanneroo area; the flora and fauna, the Aborigines who roamed and hunted here and the European settlers. The wetlands with its chain of lakes provided the Aborigines with an abundant supply of food. These lakes attracted the first pioneers to establish market gardens producing food for the settlement.

Among the many other exhibits are displays on shipwrecks that occurred on the coast, the development of the Yanchep National Park and the role of the 10th Light Horse Regiment, the R.A.A.F. 227 Radar and Communications Unit and No. 4 Rehabilitation Unit during World War YID.

The Gloucester Lodge is a classified Heritage building.

A community art gallery situated within Gloucester Lodge Museum commenced operation in 1994. Artists residing in the city of Wanneroo exhibit their works. The artists gain curatorial experience in addition to exhibition and sale of their works.

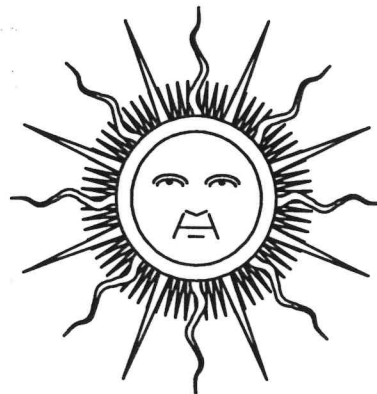
Three local artists, Neil Johnston (charcoal drawing, Dale Greenhalgh (oil painting) and Heather Brooks (pressed flower craft) will have their exhibition from Sunday 9th November until Sunday 4 January 1998.

Open Tuesday, Wednesday, Saturday, Sunday and public holidays, 11.30am to 4.30pm. Admission - adults \$1.50, children and pensioners 80c. Group bookings are welcome, ph: 9400 4000 or 9561 1579



Sun & Stars Festival

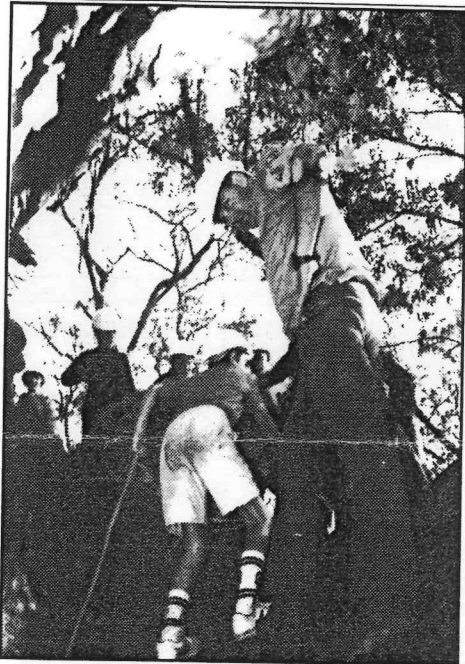
Sunday
1st March 1998



Lakeview
Picnic
Area
Yanchep
National
Park



WHAT'S ON IN SUMMER



Natural Airconditioning

Discover for yourself the natural air-conditioned mysteries of the Yanchep caves this summer. What better way to escape the summer heat and fly by going underground to a cool comfortable temperature of 18-20 degrees.

Since the 1830's over 500 limestone caves have been recorded in the Yanchep area. These limestone caves vary in size and appearance. Unfortunately because of safety reasons only four of these caves are open to the public - Mambibby, Yonderup, Yanchep and Crystal Caves.

Every afternoon Crystal cave is open for the public to view, the others are open for special tours by prior booking only.

Discover why some of the early founders of these caves Roe, Gull, White and Ramaciotti quoted: 'Rugged winding passages, it's difficult to understand why nature has bestowed upon it such beauties'.

Adventure Caving

Duration: 90 minutes
 Cost: \$5
 Age: 10+

Junior Adventure Caving

Duration: 60 minutes
 Cost: \$3
 Age: 6-10

Yonderup Cave

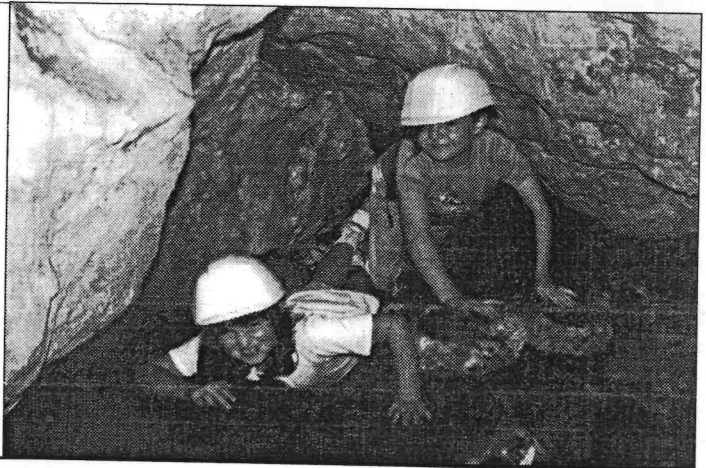
Duration: 60 minutes
 Cost: \$3
 Age: 10+

Special needs for Caving activities

Participants must wear old clothes (lightweight) - long sleeves, trousers, closed in shoes.

Bring sunscreen, insect repellent and water.

Torches and hard hats are supplied.



Bookings are essential and can be made by contacting the park on Ph: 9561 1004 or Fax: 9561 2316.
 Group bookings are welcome, if these dates do not suit your schedule and you have a group of 10 or more, talk to our friendly staff.

JANUARY SCHOOL HOLIDAYS

Sun	Mon	Tue	Wed	Thu	Fri	Sat
11 1pm Yonderup Cave Tour	12	13	14 1pm Adventure Caving	15	16	17 11am Yonderup & 1pm Adventure Caving
18 1pm Yonderup Cave Tour	19	20 1pm Adventure Caving	21	22 1pm Adventure Caving	23	24 11am Yonderup & 1pm Adventure Caving

Volunteer News

Call of the Koala



It has been almost 12 months since the Call of the Koala volunteer group was formed and approved by CALM.

The groups objectives are to assist management of enclosed fauna by planting and establishing feed tree plantations and by seeking external funding or sponsorship for the purchase of trees and associated horticultural equipment as well as capital works, renovations and maintenance of koala compounds. The group meet their objectives by tree planting within State Forest, liaison to gain sponsorship for funding projects, grants for materials and trees, and fundraising.

This Volunteer Group have planted 1000's trees so far and more are needed. Busy Bee days in the compounds have also been a great success.

If you or your group wish to be part of this great group and participate in their great activities contact Juanita or Lorraine on 9561 5469 or the Volunteer Co-ordinator at Yanchep National Park.



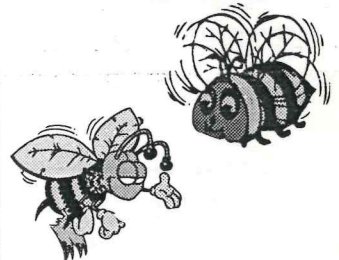
Busy Bee News

Call of the Koala

Come along and be an honorary Koala Carer for a day

For further info contact

Lorraine or Juanita
9651 5469



Bridal Creeper Removal

For further info contact
Jill Vines 9561 2177 or
The Park Office 9561 1004

Yanchep Inn Now Open

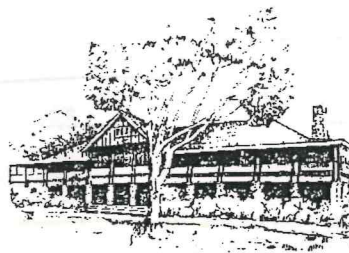
3 Bars

Restaurant & Luncheon Bistro

Devonshire Teas

Functions, Weddings, Anything

Ph: 9561 1001



Yanchep National Park
Yanchep WA 6035

CALM
Wildlife Research
PO Box 51
Wanneroo 6065



Conservation and Land
Management

