

# LIBRARY

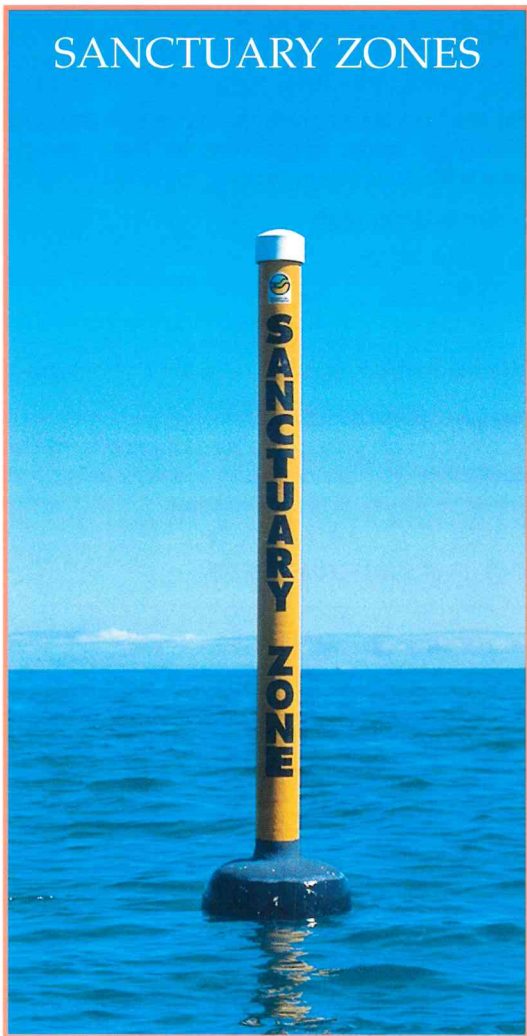
Department of Biodiversity,  
Conservation and Attractions

This PDF has been created for digital preservation. It may be used for research but is not suitable for other purposes. It may be superseded by a more current version or just be out-of-date and have no relevance to current situations.

M A R M I O N

*Marine Park*

SANCTUARY ZONES



DEPARTMENT OF CONSERVATION  
AND LAND MANAGEMENT

## WHAT ARE SANCTUARY ZONES?

Sanctuary zones are created specifically as *look but don't take* areas managed solely for nature conservation and low-impact recreation. All fishing and collecting are strictly prohibited. PENALTIES APPLY.

## WHERE ARE THE SANCTUARY ZONES?

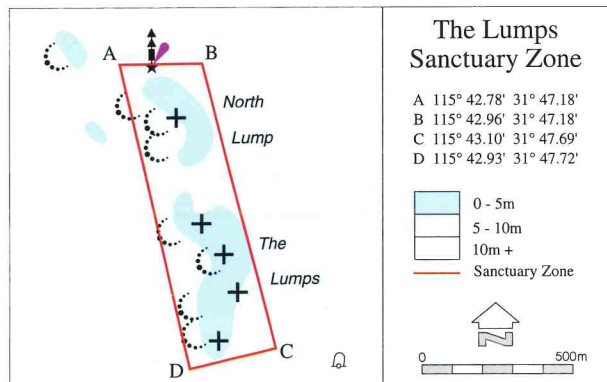
The sanctuary zones, clearly marked on each corner by yellow spar marker buoys, comprise three strategic areas of Marmion Marine Park:

- Ⓞ BOYINABOAT REEF
- Ⓞ LITTLE ISLAND
- Ⓞ THE LUMPS

## WHY HAVE SANCTUARY ZONES?

Sanctuary zones are important management tools used to monitor and preserve features or areas of special significance, by reducing human interference likely to impact negatively on the environment.

### THE LUMPS SANCTUARY ZONE



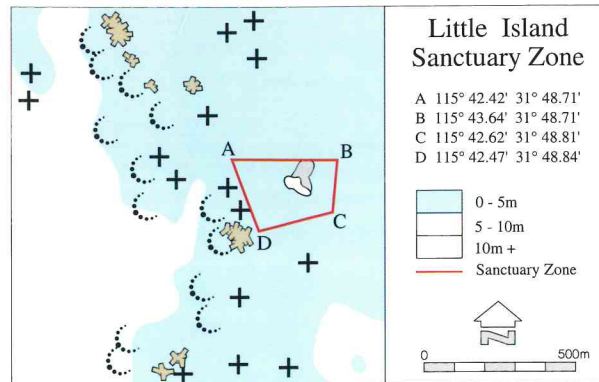
The Lumps Sanctuary Zone encompasses the limestone reefs known as North Lump and The Lumps. It includes outstanding examples of representative inshore reef communities surrounded by extensive seagrass meadows. The Lumps are located four and a half kilometres north of Hillarys Boat Harbour.

### LITTLE ISLAND SANCTUARY ZONE

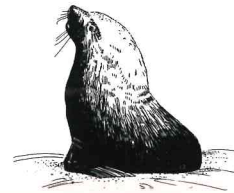
Little Island is located approximately two kilometres north-west of Hillarys Boat Harbour and is a haul-out area for the Australian sea lion.

People and vessels anchored on the island take up limited shoreline space and can disturb and prevent sea lions from coming ashore. To allow continued access for people onto the island, please anchor in sand away from the shore and make visits less than 10 minutes.

Landing of vessels on the island is prohibited.

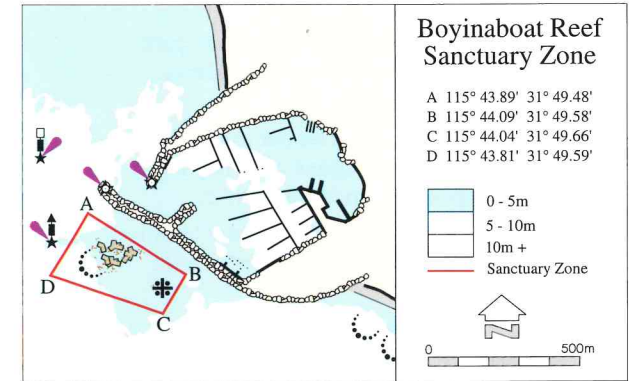


Sea lions may appear docile but they are wild animals and can become aggressive. People have been bitten. Please treat these animals with respect and caution both on the island and in the water.



The coordinates shown on this brochure are referenced to the Geocentric Datum of Australia 1994 (GDA 1994) and will differ by approx 200m from the same points shown on charts referenced to the Australian Geodetic Datum 1984 (AGD84).

### BOYINABOAT REEF SANCTUARY ZONE

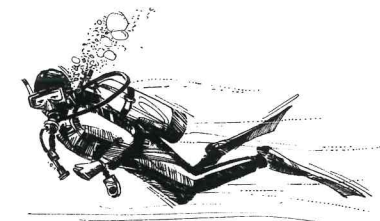


Boyinaboat Reef is the southernmost reef in a chain of inshore reefs that once comprised an ancient shoreline.

Prior to the construction of the Hillarys Boat Harbour this reef lay a kilometre from shore. It is now within 100m of the southern wall. This accessibility has made Boyinaboat one of Perth's most popular dive and snorkel sites.

Boyinaboat Reef is the site of the first underwater nature trail in Western Australia. Underwater plaques have been placed at sites of interest around the reef to form an interesting and informative dive trail. Following the trail allows divers to learn more about our diverse marine life and ecosystems.

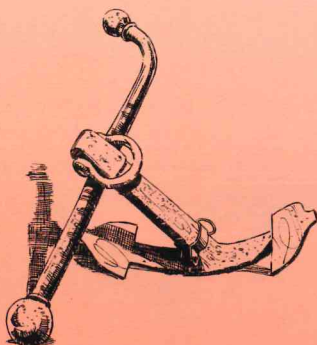
Diving conditions at this site are highly variable. It can be hazardous in strong sea-breezes and a moderate swell. Novice divers should only dive this site in calm conditions. Your enjoyment and safety are our concern but your responsibility. Please take care.



## CARING FOR YOUR SANCTUARY ZONES

- Ⓢ **Be Wise:** Make it your business to know park regulations and sanctuary zone boundaries.
- Ⓢ **Be Responsible:** These zones provide a representative safe haven for our wildlife and their habitats. All fishing and collecting in sanctuary zones are strictly prohibited.
- Ⓢ **Be Careful:** Your safety is our concern but your responsibility. Obtain a local waters forecast before setting out.
- Ⓢ **Dive Safe:** Protect yourself and make others aware of your presence by displaying a Dive (A) Flag during any dive or snorkelling activity.
- Ⓢ **Be Caring:** Pets are not permitted on Little Island but can be exercised on allocated beaches within the park.
- Ⓢ **Come Back:** Come back and enjoy and learn about these unique areas.

**NOTE:** All fishing and collecting in sanctuary zones are strictly prohibited. Penalties apply.





## FOR MORE INFORMATION

The Department of Conservation and Land Management (CALM) protects and manages native plants and animals throughout Western Australia.

CALM officers are always happy to answer any questions you may have. Alternatively you can write to or telephone the District listed below:

### MARINE AND COASTAL DISTRICT



Department of Conservation  
and Land Management

47 Henry Street

FREMANTLE WA 6160

Telephone (08) 9432 5111