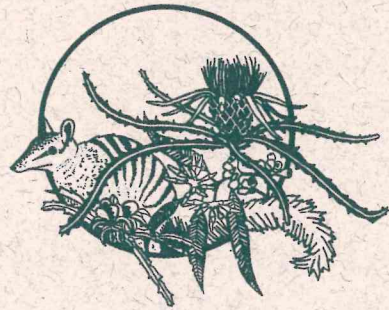


LIBRARY

Department of Biodiversity,
Conservation and Attractions

This PDF has been created for digital preservation. It may be used for research but is not suitable for other purposes. It may be superseded by a more current version or just be out-of-date and have no relevance to current situations.



REGISTRATION

Yes! Please enrol me for the Dryandra Woodland Ecology Course to be held Friday - Sunday, 6-8 November 1992.

Name:

Address:

Phone: (day)

(night)

Send form and cheque (made out to CALM) to:

Dryandra Course Coordinator
CALM/Pinnacle House
16 Ogilvie Road
Mt Pleasant WA 6153

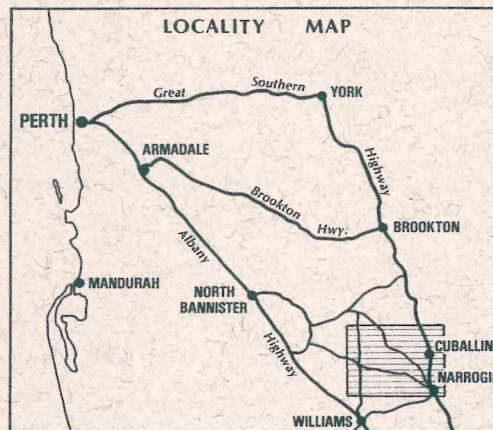


GENERAL INFORMATION

Participants need to bring their own bedding (including pillow and blankets), a towel, clothes and boots suitable for field work, effective wet weather gear and warm clothing for night work. Additional useful equipment includes camera, torch, binoculars, field guides to plants and animals and a personal journal.

FURTHER INFORMATION

For more information please contact CALM's Recreation and Landscape Branch on (09) 364-0777.



Printed on recycled paper

0981 0892 760

008712

DRYANDRA WOODLAND

ECOLOGY COURSE

6-8 NOVEMBER 1992



PAM00543



Department of Conservation
and Land Management

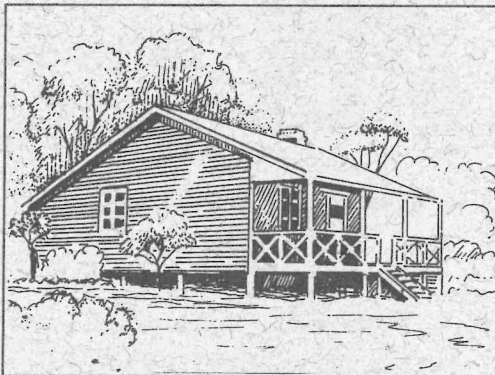
THE COURSE

Try your hand at radio-tracking a numbat. Trap the tiny red-tailed phascogale. Watch a woylie digging for truffles. Identify land-use patterns and changes they have brought to Dryandra and the wider Wheatbelt. Catch the nightly antics of a possum in the beam of your spotlight.

These are just a few of the experiences you might expect as a participant in the Dryandra Woodland Ecology Course which will introduce you to practical aspects of ecology and the application of ecological techniques.

Join enthusiastic course leaders to ...

- ❖ identify the telltale signs of native animals, observe trapping techniques including trap placement, baiting, handling captured animals, measuring and weighing;



- ❖ learn about Aboriginal cultural activities. You'll see first hand evidence of Aboriginal occupation in Dryandra and develop an appreciation for the environmental diversity Aboriginal people once enjoyed;
- ❖ sharpen observation skills, increase your awareness and knowledge of natural ecological processes and gain an understanding of the historical role of mallet plantations for tannin and timber production and conservation;
- ❖ experience the diversity of life in a self-sustaining ecosystem benefited by careful management practices.

THE VENUE

The Irabina Field Study Centre is located in Dryandra State Forest, west of Narrogin and only a 2 1/2 hour drive from Perth. Set amongst cleared agricultural land, Dryandra is a vital island of nature conservation.

The Dryandra complex of nine separate blocks of over 28,000 ha has been set aside by the Department of Conservation and Land Management (CALM) to conserve its unique forest values.

COST AND EQUIPMENT

The course cost of \$165 per person includes transport from Perth, food and accommodation for two nights, course content and printed materials.

ACCOMMODATION AND FACILITIES

Rustic cottages at Dryandra provide basic accommodation: two bedrooms with beds for 12 people, kitchen, lounge room with log fire-place and bathroom.

Cooking facilities include gas stoves, cooking utensils, pots, pans, cutlery and crockery.

A pay phone is located near the caretaker's cottage.

