

LIBRARY

Department of Biodiversity,
Conservation and Attractions

This PDF has been created for digital preservation. It may be used for research but is not suitable for other purposes. It may be superseded by a more current version or just be out-of-date and have no relevance to current situations.

Bookings and Enquiries

First book by phone, fax or E-mail

Phone The Hills Forest weekdays between 8.30am and 2.30pm on (08) 9295 6149 or (08) 9295 6300, fax on (08) 9295 3247 or E-mail: jillf@calm.wa.gov.au.

Confirmation letter

A confirmation letter with details of your PD day, excursion or activity will then be forwarded to you.

Send your payment

Please make cheques payable to: Department of Conservation and Land Management and send to:

Exploring The Hills Forest Programs
Department of Conservation and Land Management, The Hills Forest,
Mundaring Weir Road,
MUNDARING WA 6073

Cancellations

Please phone, then confirm your cancellation in writing by fax at least one week before your booked visit.

Find out more

Teachers can find out about all the Department's educational programs in the 'For Schools' section of the NatureBase Internet site at <http://www.naturebase.net>

Note: All costs in this brochure include 10% GST. Our programs and activities are curriculum based so the GST can be reclaimed.

The Hills Forest Discovery Centre is a smoke free zone



Printed on recycled paper

2002142-03-2M

Exploring The Hills Forest EcoEducation Programs with your primary students in 2002



Exploring The Hills Forest
EcoEducation programs are based
in the jarrah forest near Mundaring.
They provide many excursion
opportunities and classroom resources
that support the outcomes
focused approach of all curriculum
Learning Areas.

PAM00555



About the Department

The Department of Conservation and Land Management, in partnership with the community, has the task of conserving Western Australia's biodiversity, and managing the lands and waters entrusted to it, for the benefit of present and future generations.

The area managed is a significant portion of the State, including national parks, State forests, nature reserves, marine parks and timber reserves. It is a large task and one that requires the awareness, understanding and involvement of the wider community.

② The Hills Forest Discovery Centre

The Hills Forest Discovery Centre aims to raise awareness and understanding of biodiversity and the values and management of our natural heritage. It offers visitors of all ages a range of outdoor, nature-based experiences.

② Exploring The Hills Forest EcoEducation programs

These programs have been developed for school students of all ages. They have been developed and written by local educators. Since 1993 more than 90,000 students and teachers have been through our programs and the demand is growing.



Great opportunities

- Special Offers for Special Events - see details, this brochure
- \$50 voucher for 'new' teachers attending a PD and booking an excursion — tell a colleague
- \$50 voucher for Monday two-class bookings
- Forest Detective Trail — excursion for middle primary
- Koolangars, Corroborees and Kaleeps — Aboriginal culture excursion for middle primary
- Bush Tucker Supper with our Nyoongar leaders
- Monitoring marsupials — camp and take part in Western Shield research
- Inservicing at your school

We offer activities for every year level. Each program includes an excursion to The Hills Forest, which is guaranteed to be interactive, informative and exciting.

1. Discovering The Hills Forest for Years 6 & 7

This program explores the jarrah forest ecosystem. It fulfils outcome requirements in all Learning Areas particularly the core value of *Environmental Responsibility*. Students learn to lessen their impact on the forest and its resources.

What teachers had to say about the program:

"The excursion was an excellent learning experience." — Sue

"I would recommend this program to everyone." — John

"I appreciated the support from personnel and relevant material for my teaching program." — Jenny

What's involved:

② Teacher Professional Development (PD) day in the forest

This gives teachers an overview of our programs, a resource package and experience of the activities students will encounter during excursions.

② Pre-visit and post-visit activities at school

Teachers use the resource package to prepare students for the excursion, and follow up afterwards.

② Student excursion

A one-day field trip into the forest led by Education Officers.

② Student numbers

Minimum: 25 students per class

② Cost

PD day: \$55.00 per teacher (includes lunch and resources)
Excursion: \$7.70 per student.

② Time

Excursion: 10am to 2pm

② When?

PD days: (see dates under *Professional Development 2002*)
Excursions: Weekdays, 1 March to 30 November



2. Catchment Carers' Trail For Years 5, 6 and 7

This learning program about the water cycle, catchments and water resource management runs with sponsorship from the Water Corporation. It leads to investigations in all aspects of the Society and Environment Learning Area, particularly *Place and Space, Resources and Natural and Social Systems*.

What a teacher had to say about the program:

"Thankyou for the opportunity to use an excellent resource led by such dedicated people." – Julia

"A terrific educational experience that all students should encounter. Tied in so well with our studies on water." – Ian

What's involved

- ☉ **Teacher and student resource notes**
A booklet of notes will be forwarded to teachers who book the excursion. A PD day is recommended.
- ☉ **Pre and post-visit activities at school**
Teachers may use the notes to prepare students for the excursion and follow-up.
- ☉ **Student excursion**

A one-day field trip which includes:

- an interactive walk trail focusing on issues such as salinity, erosion, nature conservation and the water cycle, and
- tour of the Mundaring Weir, its history and use as part of an integrated water system.

Note: There is no access to the reservoir water body during this excursion.

- ☉ **Student numbers**
Minimum: 25 students per class

- ☉ **Cost**
Excursion: \$6.05 per student

Note: \$50 voucher for Monday, two-class bookings

- ☉ **Time**
9.45am to 2pm

- ☉ **When?**
Weekdays
Terms 1, 2, 3 and Term 4
until 30 November.



3. Threatened Species program For Years 5, 6 and 7

Back from the Brink Excursion

A program raising student awareness of Western Australia's threatened species and current projects aimed at preventing further extinctions. This program fulfils student outcomes required by Society and Environment, and Science Learning Areas and addresses the core value of *Environmental Responsibility*.

What teachers had to say about the program:

"The Action Pack was fantastic. Easy to follow and implement, a varied range of activities that students found interesting." – Jeff

"The excursion was very informative, activity based, a terrific experience. Well linked to the Curriculum Framework." – Kathy

What's involved?

- ☉ **Western Shield Action Pack for pre and post-visit activities**
This Action Pack will be forwarded to teachers who book the excursion. The pack contains teacher notes, resource sheets and activity sheets for classroom work, and suggestions for extension activities that link with the curriculum.

The Action Pack is also available in the 'For Schools' section of the Department's NatureBase Internet site at <http://www.naturebase.net>

- ☉ **Student excursion**
A one-day field trip which includes:
 - a hands-on session participating in the Department's research methods,
 - a tour of The Hills-Forest's animal habitat project, and
 - a close encounter with threatened native animals.

- ☉ **Student numbers**
Minimum: 25 students per class

- ☉ **Cost**
Excursion: \$7.70 per student

Note: \$50 voucher for Monday, two-class bookings!

- ☉ **Time**
10.00 am to 2.00 pm

- ☉ **When?**
Weekdays



Win!!

A Back from the Brink Excursion

Classes that complete the activities can enter a draw to win an excursion to The Hills Forest. See previous panel for a summary of the excursion's hands-on activities.

What teachers had to say about the excursion:

"The whole day was like a well-rehearsed Broadway production with a long run! Award winning. Thankyou." - Fiona

"Highly educational - the animal encounter was terrific." - Denis

What's involved?

Western Shield Action Pack

Complete the activities in the pack with your class. By 21 October send the registration form with the completed Activity Sheets from ONE of your students and a poster promoting the Department's Western Shield program saving threatened species to:

Win a Back from the Brink excursion
The Hills Forest Discovery Centre
Mundaring Weir Rd, Mundaring 6073

Successful classes will be notified and a date arranged for the excursion.

Student excursion

A one-day field trip which includes:

- a hands-on session participating in the Department's research methods,
- a tour of The Hills Forest's animal habitat project, and
- a close encounter with threatened native animals.

Student numbers for excursion

One class of students

Cost

Obtain a quotation for bus travel. Fax this and send the invoice to The Hills Forest. No excursion fee.

Time

10am to 2pm

When?

November, date to be arranged

Country schools

Bunbury, Collie, Harvey areas

Students in schools of the Bunbury area that complete the activities in the Action Pack can enter a draw to win an excursion to Wellington Discovery Forest (Bunbury, Harvey and Collie areas).

Enquiries: Tel: (08) 9334 0387 or fax: (08) 9334 0498



4.

Forest focus walks and activities for Years 1 to 7

Year-round excursion activities to suit your needs, focusing on the forest environment, plants, birds, spiders, reptiles and invertebrates. All activities help to instil the value of *Environmental Responsibility* and the need to maintain the *Diversity of Species*.

What's involved?

Teachers choose one or more of the activities listed below to make up an excursion day or to enrich a school camp.

Monitoring Marsupials (Years 6 & 7)

A unique opportunity for students on camp to be part of Western Shield research; to set traps and check them the next morning; to measure the head length of a wild chuditch or check the pouch of a bandicoot. Limited offer for three classes only.

Duration

2 hours (1 hour, morning and afternoon)

When?

May, October or November

Cost

\$4.95 per student

Minimum

25 students

Maximum

1 class

Bush Tucker Supper (Years 5, 6 & 7)

Enjoy an evening in our campsite with Nyoongar leaders, learn about Nyoongar nutrition and then make and eat a damper and kangaroo supper while listening to Dreamtime stories.

Duration:

2 hours

Cost:

\$6.60 per student

Minimum:

25 students

Maximum:

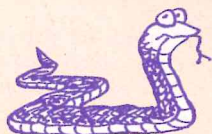
1 class



Place and Space for Reptiles (Years 4 to 7)

A chance to touch a real live skink, python or lizard at the Centre. Students learn that the care of places provides spaces for a diversity of species.

- 🕒 **Duration**
1 hour
- 💰 **Cost**
\$3.30 per student
- 👥 **Minimum**
25 students
- 👥 **Maximum**
1 class



Night Life and Living (Years 3 to 7)

Students will recognise the interdependence of life as the forest comes alive after dark. Make this part of your camp at The Hills Forest campground.

- 🕒 **Duration**
1.5 hours
- 💰 **Cost**
\$3.30 per student
- 👥 **Minimum**
25 students
- 👥 **Maximum**
1 class



Spiders – A Diversity of Spiders (Years 1 to 7)

Students will learn to value our amazing arachnids and the importance of maintaining a diversity of species.

- 🕒 **Duration**
1 hour or 2 hours
- 💰 **Cost**
\$2.20 (1 hr session) or \$3.30 (2-hr session)
- 👥 **Minimum**
25 students
- 👥 **Maximum**
1 class
- 📅 **When?**
1 March to 15 June; 15 October to 20 December



Investigating the Underworld (Years 1 to 7)

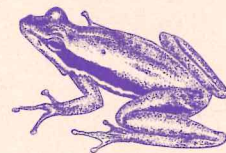
Students will investigate, communicate and participate in a hands-on search of the jarrah forest underworld. They will explore the lives of beetles, bugs, spiders, ants, scorpions, earwigs, mantises and many more.

- 🕒 **Duration**
1 hour or 2 hours
- 💰 **Cost**
\$2.20 (1 hr session) or \$3.30 (2hr session)
- 👥 **Minimum**
25 students
- 👥 **Maximum**
1 class

Frogs – environmental watch dogs (Years 1 to 7)

Students will discover the value of frogs and then learn where to find them in the forest.

- 🕒 **Duration**
2 hours
- 💰 **Cost**
\$3.85 per student
- 👥 **Minimum**
25 students
- 👥 **Maximum**
1 class
- 📅 **When?**
1 June to 21 September



Sense-ational Trail (Years 1 to 7)

Using blindfolds students explore the forest along our rope walk using their senses of smell, touch and hearing.

- 🕒 **Duration**
1 hour
- 💰 **Cost**
\$2.20 per student
- 👥 **Minimum**
25 students
- 👥 **Maximum**
1 class

5. Forest Detective Trail for Middle Childhood, Years 4 & 5

Students use their investigating and inquiry skills to solve a mystery and track down an animal by identifying footprints, scats, skin and other signs along the trail.

What's involved:

Teacher PD day in the forest

Attendance at a PD day is important. It provides teachers with an overview of the day and a chance to experience excursion activities.

Pre-visit and post-visit activities at school

Teachers prepare students for the excursion and follow up afterwards using the Department's resources for the classroom.

Student excursion

Activities can include a secret investigators 'case briefing' session, an animal encounter session and a prime suspect trail that helps solve the mystery.

Student numbers

Minimum: 25 students per class

Cost

PD day: \$55.00 per teacher (includes lunch and resources)
Excursion: \$7.70 per student

Time

10.00 am to 2.00 pm

When?

PD days: (see dates under Professional Development 2002)
Excursions: Weekdays, Terms 1, 2, 3 and 4 until 30 November.



6. Busy in the forest for Pre-primary to Year 3

A forest excursion that links with the Department's Early Childhood Forest Pack for the classroom. Includes a sensory trail and an opportunity for students to meet some forest creatures.

What a teacher had to say about the program:

"Nothing was too much trouble. I was really impressed with the standard of care and professionalism of the staff." - Sophie
"Thankyou for a fabulous excursion. A great learning experience for all." - Margaret

What's involved:

Teacher PD day in the forest

Attendance at a PD day is important. It provides teachers with a forest pack, an overview of the day and a chance to experience excursion activities.

Pre-visit and post-visit activities at school

Teachers prepare students for the excursion and follow up afterwards using the Department's Forest Pack, 'A forest is a very busy place'.

Student excursion

Activities include a sensory, blindfold rope-walk trail, a 'treasure' trail and an animal encounter session.

Student numbers

Minimum: 25 students per class

Cost

PD day: \$55.00 per teacher (includes lunch and forest pack)
Excursion: \$7.70 per student Forest Packs: \$11.00 each, if not attending PD day (To order, phone (08) 9334 0437)

Time

10.00 am to 2.00 pm

When?

PD days: (see dates under Professional Development 2002)
Excursions: Weekdays, Terms 1, 2 and 3



7.

Aboriginal Culture Excursions (ACE) for Years 6 & 7

Students role-play as a group of Aboriginal people on a six-season walk exploring traditional Aboriginal culture in the jarrah forest. Excursion content supports the Education Department's Aboriginal Studies materials.

What a teacher had to say about the excursion:

"Every part of the excursion day (from the introductory welcome to goodbye) was highly educational, relevant to what we covered in the classroom, hands-on, interesting and well delivered. I can't compliment you enough!" - Mark

What's involved

Pre-visit and post-visit activities at school

Teachers prepare students for the excursion and follow up afterwards using the Education Department's Aboriginal Studies materials.

Student excursion

Activities include a six-season forest walk exploring traditional use of plants and animals, stories of The Dreaming, language and artefact making; all with an emphasis on student participation.

Student numbers

Minimum: 25 students per class

Cost

\$7.70 per student

Time

10am to 2pm

When?

Excursions: Weekdays excluding Tuesdays
PD days for staff of whole school (see under *Professional Development 2002*)



8.

Koolangars, Corroborees and Kalleps for Years 4 & 5

Our Aboriginal leaders will take students on a Nyoongar cultural journey through traditional language and ceremony, hunting and fishing skills.

What teachers had to say about the excursion:

"A fantastic day, interesting, informative and relevant to our learning program." - Suzanne

"Both Aboriginal leaders had a warm and engaging manner with the students. Great sense of humour. We'll be back next year." - Don

What's involved

Pre-visit and post-visit activities at school

Teachers prepare students for the excursion and follow up afterwards using the Education Department's Aboriginal Studies materials.

Student excursion

Activities include a role-play greeting, preparations for a hunting expedition, a successful hunt and corroboree. Students will build a fishing fence, 'catch' fish and search for turtles in the mud.

Student numbers

Minimum: 25 students per class

Cost

\$7.70 per student

Time

10am to 2pm

When?

Excursions: Weekdays excluding Tuesdays PD days for staff of whole school (see under *Professional Development 2002*)



9. School Camps in the Forest

Camp under canvas at The Hills Forest Discovery Centre or Patens Brook campsites. Alternatively, stay at the Mundaring Youth Hostel and participate in a number of our educational programs.

What one teacher had to say about his year 6 camp:

"The camp was a highlight of the year. The variety of curriculum-based activities, excellent facilities and professional staff made our stay very worthwhile. My students were especially thrilled with their nighttime experience on the Sense-ational Trail." – Trevor

The Hills Forest Discovery Centre camp ground

Suitable for disabled people

Facilities

12 shady tent sites, camp kitchen including electric BBQs, hot showers and toilets.

Capacity

one class with adults. 35 maximum.

Cost

Groups doing Exploring The Hills Forest activities:

\$4.40 per student (age 4 to 15 years) per night

\$8.80 per adult per night (1 free adult for each group of 10 children)

Groups not doing Exploring The Hills Forest activities:

\$6.60 per student per night

\$8.80 per adult per night



Patens Brook camp site

No vehicle access. Meet the challenge and walk three kilometres to the secluded campsite carrying all camping gear.

Facilities

Shady camp sites (15 pads), water tank and toilets, 3 fire rings.

Capacity

one large class

Cost

\$3.30 per person per night

Mundaring Youth Hostel

Overlooking the Helena River valley enjoy the comfort and tranquillity of the hostel, one kilometre from The Hills Forest Discovery Centre.

Facilities

36 beds. Capacity for 50, extra mattresses available. Cooking facilities or have your meals prepared for you.

Cost

\$9.90 per student per night, \$16.00 per adult per night (one free adult per group), \$50.00 deposit is required when making your booking.

Bookings: Ph (08) 9295 1809 or mobile 0407 081 639

Professional Development 2002

The Hills Forest PD days are a good way for teachers to familiarise themselves with the range of the Department's educational resources and opportunities. They help teachers make the most of their visit to the forest.

NOTE: Attending a PD day is important for *The Forest Detective Trail* (Years 4 & 5) and *Busy in the forest* (Early Childhood). A PD day is advisable for all other programs.

Provides

- An overview of excursion opportunities
- Experience of some excursion activities for students
- A review of EcoEducation packages and resources
- A tour of the jarrah forest and discussion of biodiversity management led by one of the Department's Officers.
- Lunch



Dates for Exploring The Hills Forest PD

Term 1: Saturday 9 March

Term 2: Saturday 11 May and 15 June

Term 3: Saturday 3 August

Cost

\$55.00 per teacher and \$30.00 per student teacher (includes lunch and relevant resources)

Time

9am to 3.30pm

Principals please note

An Opportunity . . . Inservicing at your school

We will visit your school during a pupil free School Development day to give you an overview of our resources and programs. Call us to make arrangements.



Whole school staff PD

Available to schools on request. The Centre provides a pleasant environment, away from school where teachers can get to know their colleagues. The day will enrich their teaching programs.

Also available:

Whole school staff PD - focus on Aboriginal Culture

Cost

\$38.50 per teacher, minimum of 20 teachers, support staff and interested parents.

Enquire early as School Development and Planning Days are soon booked out.

Special Opportunity Upper Primary and Secondary school teachers

Be a Nature Conservation Officer for a night!

This is an opportunity for teachers to find out about the Department's Western Shield Schools Program and to experience the methods being used to bring wildlife back from the brink of extinction.

For teachers who have not yet used the Western Shield Action Pack.

What's involved?

- Hands-on experience of research monitoring methods - setting and checking traps for forest fauna.
- A chance to meet and question Nature Conservation Officers.
- A close encounter with threatened species. Find out how animals are being bred in captivity and rehabilitated into the wild.
- Free Action Pack and other resources for use in school.

Cost

\$27.50 (inc accommodation, meals, resources)

Time

5pm to 12 noon next morning.

When?

Friday 22 March to Saturday 23 March
Friday 24 May to Saturday 25 May

Accommodation

Mundaring Youth Hostel

Special Offers for Special Events

Join us to celebrate one or more of these special events

World Environment Day: 5 June

All excursions (excluding Aboriginal) will include an animal encounter

International Day of Indigenous People: 9 August

ACE (Year 6, 7, 8, 9) and Koolangars (Years 4 & 5) excursions \$6.60 per student

Science Week: 17 to 25 August

This year's theme is *Exploring Science in the Bush*. All our programs fulfil curriculum outcomes in the Science Learning Area. Join us during this week for some hands-on Science in the bush.

Biodiversity Month: September

All our programs promote the conservation of biodiversity. Join us and the wildflowers during this month. One lucky class each day will win a Bush Book for their school library.

National Threatened Species Day: 7 September

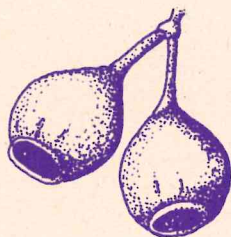
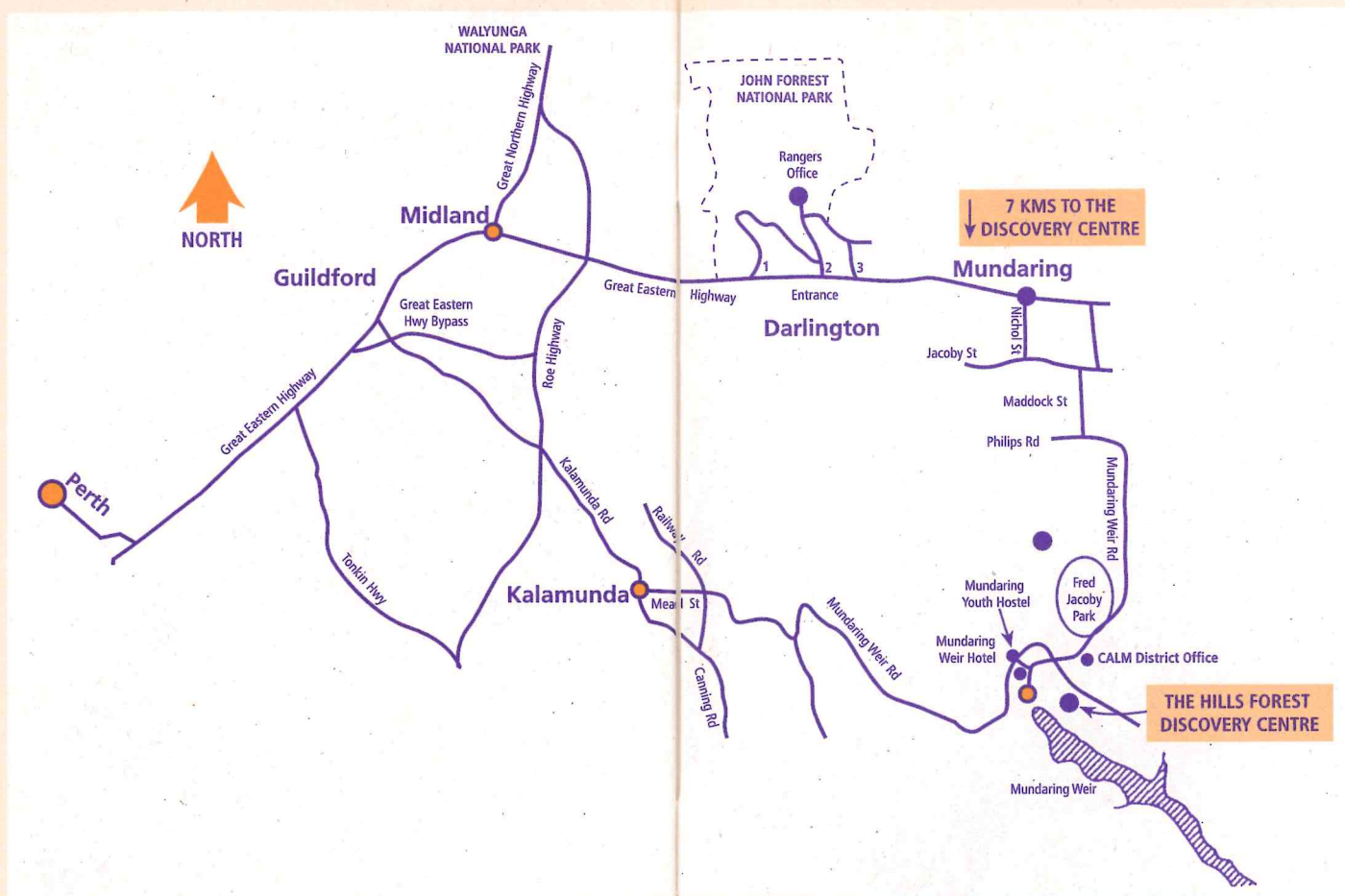
Back from the Brink excursions \$6.60 per student

Landcare Week: 1 to 7 September

Catchment Carers' Trail excursions \$6.60 per student



The way to The Hills Forest Discovery Centre



Tell me and I'll forget;
show me and I may remember;
involve me and I'll understand.

— Chinese proverb