

# LIBRARY

Department of Biodiversity,  
Conservation and Attractions

This PDF has been created for digital preservation. It may be used for research but is not suitable for other purposes. It may be superseded by a more current version or just be out-of-date and have no relevance to current situations.

# Busy in the forest for Pre-primary to Year 3

A forest excursion that links with the Department's Early Childhood Forest Pack for the classroom. Includes a sensory trail and an opportunity for students to meet some forest creatures.

## What a teacher had to say about the program:

*"Nothing was too much trouble. I was really impressed with the standard of care and professionalism of the staff."* - Sophie

*"Thankyou for a fabulous excursion. A great learning experience for all."* - Margaret

## What's involved:

### Teacher PD day in the forest

Attendance at a PD day is important. It provides teachers with a forest pack, an overview of the day and a chance to experience excursion activities.



### Pre-visit and post-visit activities at school

Teachers prepare students for the excursion and follow up afterwards using the Department's Forest Pack, 'A forest is a very busy place'.

### Student excursion

Activities include a sensory, blindfold rope-walk trail, a 'treasure' trail and an animal encounter session.

### Student numbers

Minimum: 25 students per class

### Cost

PD day: \$55.00 per teacher (includes lunch and forest pack)  
Excursion: \$7.70 per student Forest Packs: \$11.00 each, if not attending PD day (To order, phone (08) 9334 0437)

### Time

10.00 am to 2.00 pm

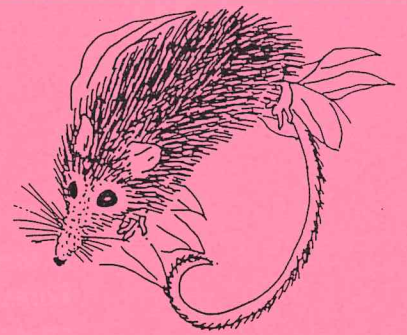
### When?

PD days: (see dates under *Professional Development 2002*)  
Excursions: Weekdays, Terms 1, 2 and 3

## Bookings and Enquiries

### First book by phone, fax or E-mail

Phone The Hills Forest weekdays between 8.30am and 2.30pm on (08) 9295 6149 or (08) 9295 6300, fax on (08) 9295 3247 or E-mail: [jillf@calm.wa.gov.au](mailto:jillf@calm.wa.gov.au).



## *A forest is a very busy place*

### **Review by Rita Blackburn**

Nelson, Belinda. Forest pack – *A forest is a very busy place*.  
For kindergarten to Year two.

*Teachers of young students will welcome this current and practical resource, filled with Australian information about Trees, forests and people. Teachers' notes include lesson plans, activity ideas, background information; links with Student Outcome Statements in Science, Society and Environment, English, Mathematics and The Arts; plus resource lists.*

*Key outcomes are outlined and activities progress from concept such as the parts of a tree to the interrelationship and dependencies of people to the forest. Student activities are open-ended and involve experience with real objects. Attractive photocopiable sheets feature large, clear, easily recognisable illustrations of tree parts and forest animals, useful for fieldwork in the playground, neighbourhood or bushland. Other activities involve children following and/or writing simple procedures, writing recounts or tallying results, using the frameworks provided.*

***Highly recommended.***

THEMES/TOPICS: trees, forest ecology, Aboriginal dreaming stories, resources, forms of text: procedures, reports, recount

RELATED LEARNING AREAS: Across-the-Curriculum

LEVEL: Teacher reference for Pre-primary, Lower primary

PRICE: Spiral A4 \$11.00 plus \$2.00 postage

FROM: Order direct from Department of Conservation and Land Management. Tel: 9334 0333 or fax: 9334 0498

REVIEWER: Rita Blackburn, Education Department of WA  
SCIS NO: 913778

