

LIBRARY

Department of Biodiversity,
Conservation and Attractions

This PDF has been created for digital preservation. It may be used for research but is not suitable for other purposes. It may be superseded by a more current version or just be out-of-date and have no relevance to current situations.

SCENIC DRIVES

Take a drive through big karri, see the best of the wildflowers, or travel into the past. See how timber for your furniture is grown, and how forests for your children are looked after. There are many scenic drives near Manjimup and Pemberton, here is our pick of them. Ask at a CALM office for brochures.

DONNELLY DRIVE 30 km 1 ½ hrs. Life in the forest.

See a forest ecosystem in action. The drive starts at the old Donnelly Mill and leads through karri and marri forest to the One Tree Bridge picnic area on Donnelly River. A pamphlet available from CALM offices and the mill shop will tell you about some of the features along the way.

CHANNYBEARUP TOUR 21 km 1 hr.

Trees for the future I

Growing timber for our needs is a major use for about half the forest. See techniques, past and present, used to manage jarrah forest for timber production, and to regenerate it after logging.

PINE CREEK ROAD TOUR 50 km 2 hrs.

Trees for the future II

See how karri forest management has developed over the past 70 years.

HEARTBREAK TRAIL 16 km 1 hr. An ancient forest.

Four-hundred-year-old virgin karri forest surrounds this winding drive through the Warren National Park. Features dramatic views over the valley of the Warren River.

RAINBOW TRAIL 12 km ½ hr. A young forest

Take a drive on a winding trail beside Lefroy Brook. You'll suddenly be confronted with an expanse of water fringed by karri parkland. Take a windsurfer for a sail, have a barbecue, then continue your drive through karri forest, sheoak glades, and the unusual trees of the Big Brook Arboretum.

FURTHER INFORMATION

Forest officers and national park rangers are always glad to help you. Do not hesitate to contact them if you need information or assistance.



This symbol marks CALM offices on the map.

REMEMBER

BE CAREFUL: Your enjoyment and safety in natural environments is our concern, but your responsibility.

BE CLEAN: Place your litter in the bins provided or better still, take it with you.

BE COOL: Don't light fires, except in BBQ's provided. Bring your own portable gas stove. Watch for signs about aerial burns, and fire danger signs outside CALM offices. No fires are to be lit on days of 'very high' or 'extreme' danger.

PROTECT ANIMALS AND PLANTS: Firearms are not permitted in national parks or forests. Pets are not permitted in national parks.

STAY ON THE ROAD: Normal road rules apply. Stick to the best formed roads in national parks and forests. For your own safety don't travel on logging roads.



Department of Conservation and Land Management

Southern Forests Region and Manjimup District Offices
Brain St, Manjimup 6258. (097)71 1988.

Pemberton District Office
Kennedy St, Pemberton 6260. (097)76 1200.

D'Entrecasteaux National Park and Shannon Park
Ranger: Windy Harbour Road, Northcliffe. (097)76 7095.

State Headquarters
50 Hayman Rd, Como, W.A. (09)3670333
1987

0652-1287-35m

MANJIMUP PEMBERTON

NATIONAL PARKS AND FORESTS



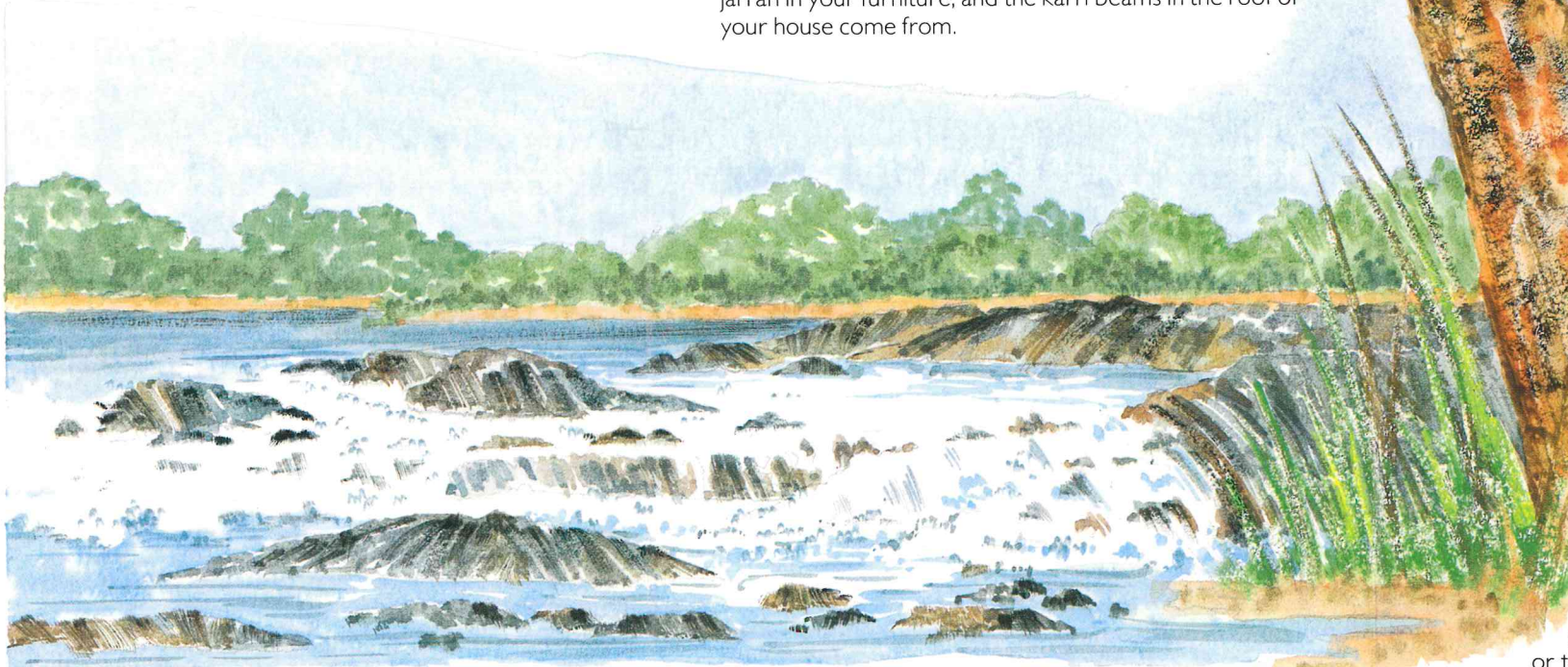
DEPARTMENT OF CONSERVATION AND LAND MANAGEMENT W.A.

Deep in the cool south-west of W.A. grows one of the magnificent forests of the world.

Towering pale-skinned karri trees, which rise to heights of 85 m, and gnarled marri dominate the landscape. Cool rivers flow beneath the giant trees, and on the coast forest streams give way to wide river mouths and windswept headlands.

Scattered throughout this region, about four hours drive from Perth, are some of W.A.'s most attractive national parks and forests for you to discover and explore. Information shelters on site will tell you more about these areas.

In spring, between September and November, the forest wildflowers are at their best. Nights are cool, and warm clothes and wet weather gear are recommended.



Summer, from December to February, is warm and relatively dry. Be careful with fires.

National parks, State forests, nature reserves and wildlife throughout the State are managed for the people of W.A. by the Department of Conservation and Land Management (CALM). While in the region drop into one of our offices for more information on W.A.'s natural environment.

PLACES TO SEE MANJIMUP

The history of Manjimup is the history of the timber industry in W.A. In the town itself a museum and timber park will tell you the story of opening up the forest for settlement and the trials faced by timber getters in the early years of this century.

In the forests surrounding the town are many reminders of this era, when the huge trees were felled with cross-cut saw and broad-axe.

About half of the State forest nearby is presently managed for timber production. This is the place where most of the jarrah in your furniture, and the karri beams in the roof of your house come from.

Parts of this forest are also kept as conservation areas. Rare native animals such as the woylie, numbat and chuditch survive and breed in the Perup forest east of Manjimup. Other areas are for recreation. A list of forest picnic and camping spots appears next to the map on the other side of this brochure.



Rufous Tree Creeper

ONE TREE BRIDGE

on Graphite Road is situated amongst big karri. Fish for trout in the Donnelly River, paddle a canoe, picnic, or take one of the walktrails which wind beneath the trees to the Four Aces and along the river. Which tree is which? The information shelter at **DIAMOND TREE** will help you tell them apart. **KING JARRAH** near Manjimup is a giant jarrah tree, over 6m in girth. The site has been taken on as a school project by the local community, and an attractive walktrail developed which leads for a leisurely 650m through jarrah and banksia woodland.

PEMBERTON

Pemberton is the heart of the big karri forest. Take your time to explore this area. Within a 50 km radius of the town are dozens of forest picnic and camping spots. A list appears next to the map on the other side of this brochure.

BIG BROOK DAM is only a short drive from Pemberton. Set amongst tall regrowth karri, BBQs and toilet facilities are provided. After lunch try fishing for rainbow trout in the dam, or take a canoe or sailboard out on the water.

WARREN NATIONAL PARK contains some magnificent areas of virgin karri, only 11 km from Pemberton. The Heartbreak and Maidenbush trails wind their way through the forest giving excellent views of the Warren River, and access to the river itself. Picnic and camping spots are provided near the river. The roads are not suitable for caravans.

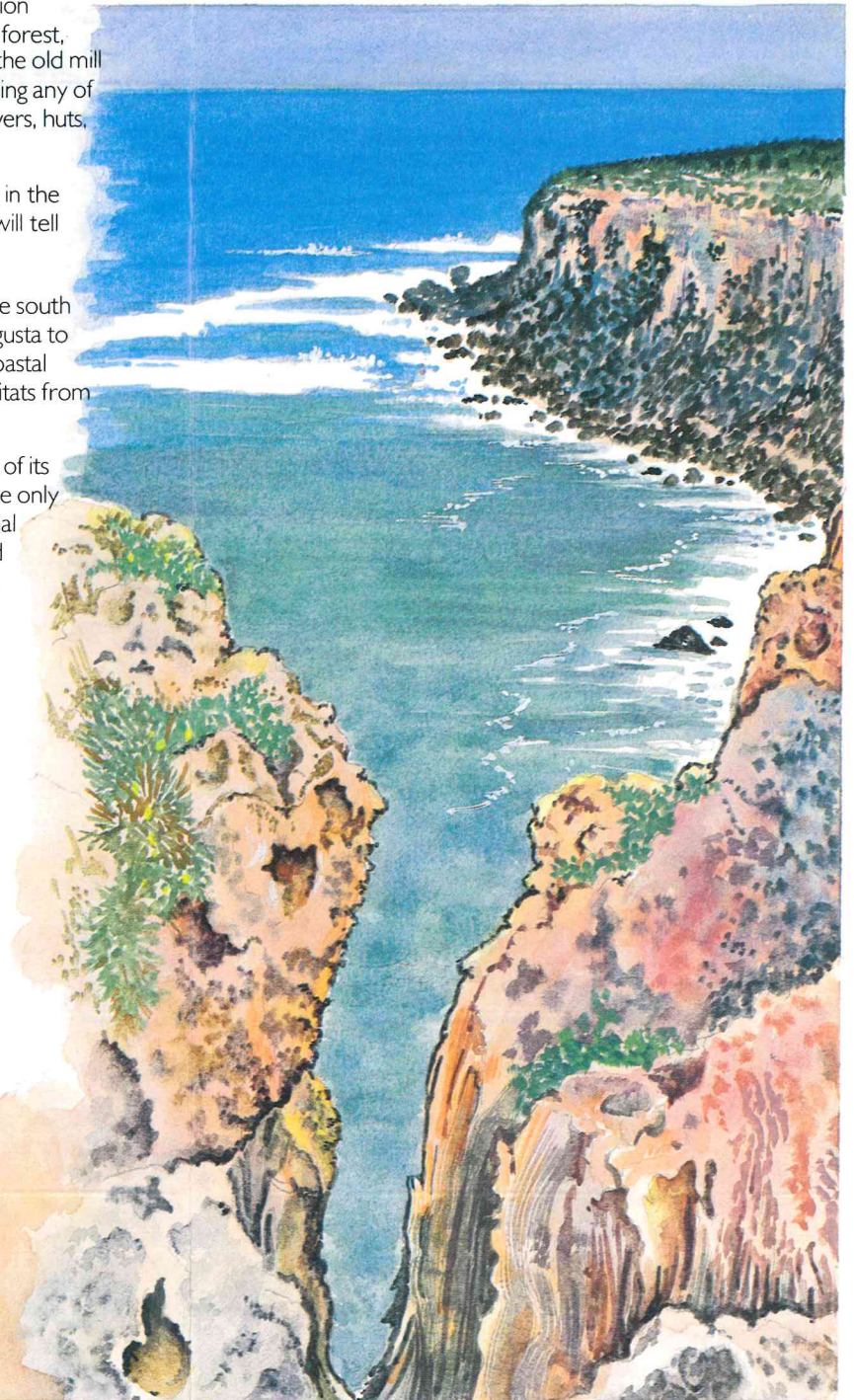
SHANNON PARK is the largest forest conservation reserve in the South-West. Features include karri forest, and a great variety of wildlife. A camping area at the old mill townsite is your base for exploring the reserve using any of the walktrails provided. Toilets, hot and cold showers, huts, tent and unpowered caravan sites are provided.

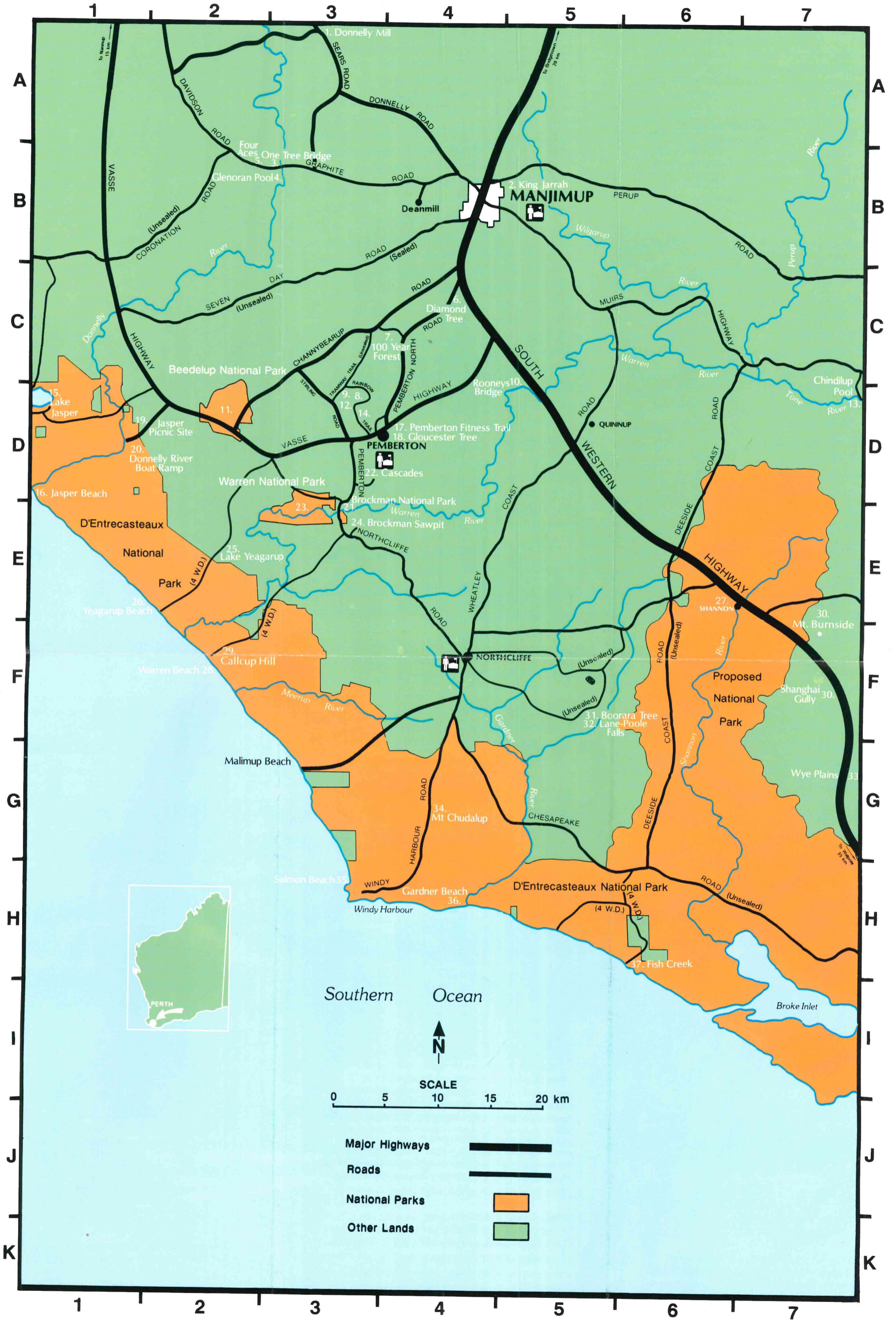
GLOUCESTER TREE is the last tree fire-lookout in the State in working order. A display shelter nearby will tell about its construction and history.

D'ENTRECASTEAUX NATIONAL PARK on the south coast stretches 120 km from Black Point near Augusta to Walpole. The Park covers nearly 120 000 ha of coastal country, and a wide range of animal and plant habitats from tall karri forest to low coastal heathlands.

Spectacular scenery and excellent fishing are part of its attraction. Windy Harbour and Broke Inlet are the only beach areas in the Park accessible by conventional vehicle. 4 WD tracks lead to coastal fishing and camping spots. Stay on existing tracks, and let your tyres down to cope with soft sand.

Native Cat







SITES	GRID REFERENCE	CAMPING	WALKTRAILS	DRINKING WATER	BBQ'S	DISABLED ACCESS	TOILETS	CANOEING	FISHING	SWIMMING
1. Donnelly Mill	A3									
2. King Jarrah	B5									
3. One Tree Bridge	B3									
4. Glenoran Pool	B3									
5. Four Aces	B2									
6. Diamond Tree	C4									
7. 100-Year-Forest	C3									
8. Big Brook Dam	D3									
9. Big Brook Arboretum	D3									
10. Rooney's Bridge	D5									
11. Beedelup National Park	D2									
12. Rainbow Trail	D3									
13. Chindilup Pool	D7									
14. Karri Oak	D3									
15. Lake Jasper	D1									
16. Jasper Beach	D1									
17. Pemberton Fitness Trail	D4									
18. Gloucester Tree	D4									
19. Jasper Picnic Site	D1									
20. Donnelly River Boat Ramp	D1									
21. Brockman National Park	E3									
22. Cascades	D3									
23. Warren National Park	E3									
24. Brockman Sawpit	E3									
25. Lake Yeagarup	E2									
26. Yeagarup Beach	E2									
27. Shannon Townsite	E6									
28. Warren Beach	F2									
29. Callcup Hill	F2									
30. Mt. Burrside	F7									
31. Boorara Tree	F5									
32. Lane-Poole Falls	F5									
33. Wye Plains	G7									
34. Mt. Chudalup	G4									
35. Salmon Beach	H3									
36. Gardner Beach	H4									
37. Fish Creek	H6									



THINGS TO DO

CAMPING

Camping areas generally have basic facilities such as bush toilets, fireplaces, and tables (see map). A small fee is charged for camping in national parks, and will be collected by the ranger. You may camp for up to three nights

in forest areas where there are no facilities, but please, leave no trace of your visit. Shire and private caravan parks also exist in all towns in the region.

CANOEING

Canoeing is best in winter, when water levels in the rivers are high enough for easy passage. In summer try the lower reaches of the Warren and Donnelly Rivers. See grid on other side for more information.

BUSHWALKS

Particularly excellent during spring and early summer. Superb walks through tall forest, along riverbanks, up granite monadnocks etc. Wear sturdy shoes or boots, take something to drink, and tell someone where you are going and when you intend to be back.

Walks vary

from long distance hikes through wild country to short after-dinner strolls. Guides to interesting walks are available from CALM offices.

FISHING

Some of the best trout fishing in the State can be had in the Warren and Donnelly Rivers, and forest streams nearby. Coastal fishing is excellent all year round. Before fishing in a national park contact the ranger. Normal fisheries regulations apply in national parks and forest areas.

MARRON

These delicious freshwater crustaceans are common throughout the region, and will stay so if you stick to the rules and put back the little ones for other seasons. A licence is necessary. The season usually opens in mid-December and closes at the beginning of May each year. There is a minimum size and bag limit. Contact the Department of Fisheries.

