

LIBRARY

Department of Biodiversity,
Conservation and Attractions

This PDF has been created for digital preservation. It may be used for research but is not suitable for other purposes. It may be superseded by a more current version or just be out-of-date and have no relevance to current situations.

Roadside Vegetation Conservation Committee

Roadside Vegetation Conservation Committee

Members

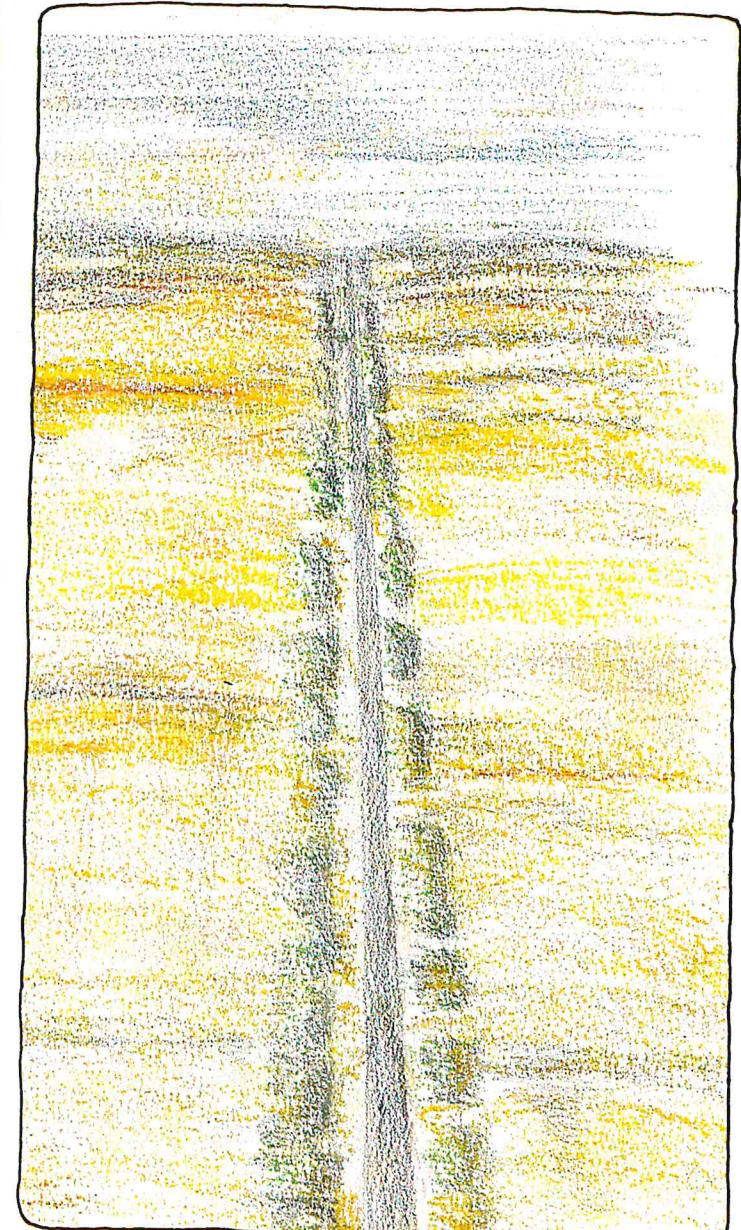
John Blyth, Chairman Department of Conservation and Land Management, W.A. Telephone: 386 8811

c/- PO Box 104
COMO 6152

Penny Hussey,
Executive Officer Department of Conservation and Land Management, W.A. Telephone: 367 0333
c/- PO Box 104 442
COMO 6152

Other members and the groups they represent are:

Peter Hewett	Greening Australia (WA)
Keith Lindbeck	Department of Agriculture
Peter Martinovich	Westrail
Cecil Moore Alan Hillier	Country Shire Councils Association
Joseph North	Country Shire Councils Association
John Robley	Bush Fires Board
Joanna Seabrook	Conservation Interests
Robert Shaw	Main Roads Department

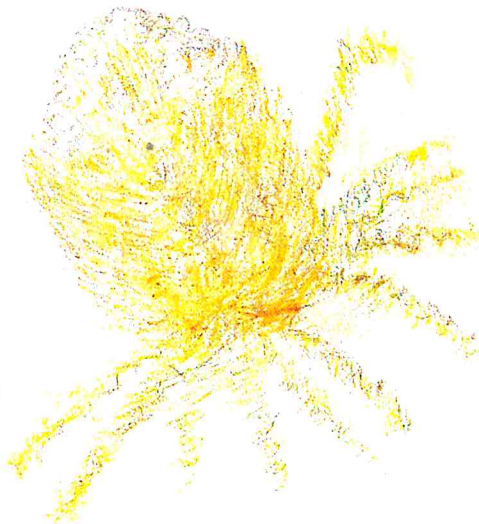


Introduction

Native plants along roadsides often provide the traveller's first contact with Western Australia's world famous wildflowers and stately trees.

Over much of the State, roadsides are reservoirs of plant species that have been cleared from the surrounding countryside.

They also provide important habitat for many animals: a home for resident species and a hospitable corridor for migratory and nomadic ones.



What The Committee Does

The terms of reference of the RVCC are: to co-ordinate and promote the conservation and effective management of rail and roadside vegetation for the benefit of the environment and the people of Western Australia.

Working within the confines of its limited resources, the Committee identifies and classifies roads with special conservation values such as those through national parks, State forests and national estate areas. It also provides guidelines on how to manage roadsides to best protect their native vegetation. It does not normally become involved with roadside vegetation in built-up areas.

The RVCC seeks to foster communication and cooperation between various groups involved in the management of roadside vegetation.



It currently meets at least five times a year, with two of the meetings in country centres. Meetings usually last a half-day, although country meetings incorporate a field inspection of road verges and require at least a full day.



Beginnings

The Roadside Vegetation Conservation Committee (RVCC) was formed in 1985 in response to concern expressed by local communities, the tourism industry, and the conservation movement over the deterioration of roadside vegetation.

Originally established under the WA Land Resource Policy Council within the Department of the Premier and Cabinet, the RVCC is now convened by the Department of Conservation and Land Management. It replaces the Road Verge Conservation Committee which discussed similar issues between 1968 and 1983.

How To Contact The RVCC

For the first time in the history of roadside conservation committees, a full-time Executive Officer, based in the Lands and Wildlife Branch of the Department of Conservation and Land Management, has been appointed. This officer provides liaison between the RVCC, the public, and road managers, as well as servicing the committee, arranging field inspections, and pursuing research into ways of achieving the aims of the RVCC.