

LIBRARY

Department of Biodiversity,
Conservation and Attractions

This PDF has been created for digital preservation. It may be used for research but is not suitable for other purposes. It may be superseded by a more current version or just be out-of-date and have no relevance to current situations.



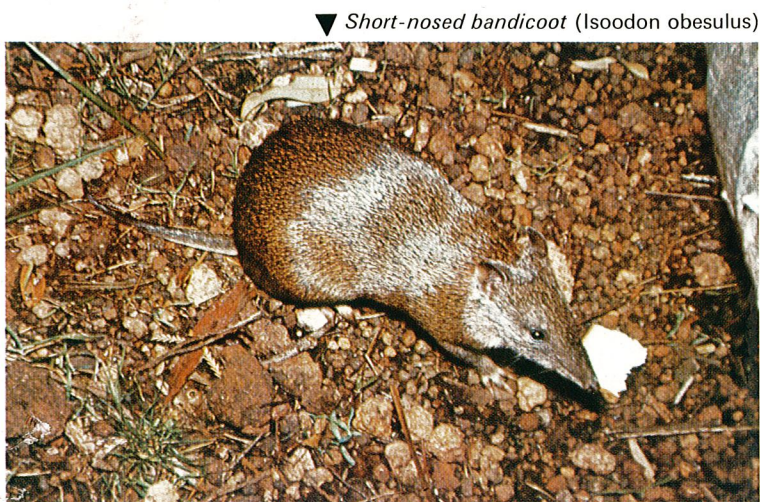
▲ Powder-bark wandoo (*Eucalyptus accedens*)



▲ Red-winged wren (*Malurus elegans*)



▲ Plantation of brown mallet (*Eucalyptus astringens*)



▼ Short-nosed bandicoot (*Isodon obesulus*)



▼ Ornate dragon, or running lizard (*Amphibolurus ornatus*)



▲ Natural brown mallet (*Eucalyptus astringens*)



▼ Blue leschenaultia (*Leschenaultia biloba*)



▼ Wilson's grevillea (*Grevillea wilsonii*)



▲ Numbat (*Myrmecobius fasciatus*)

DRYANDRA

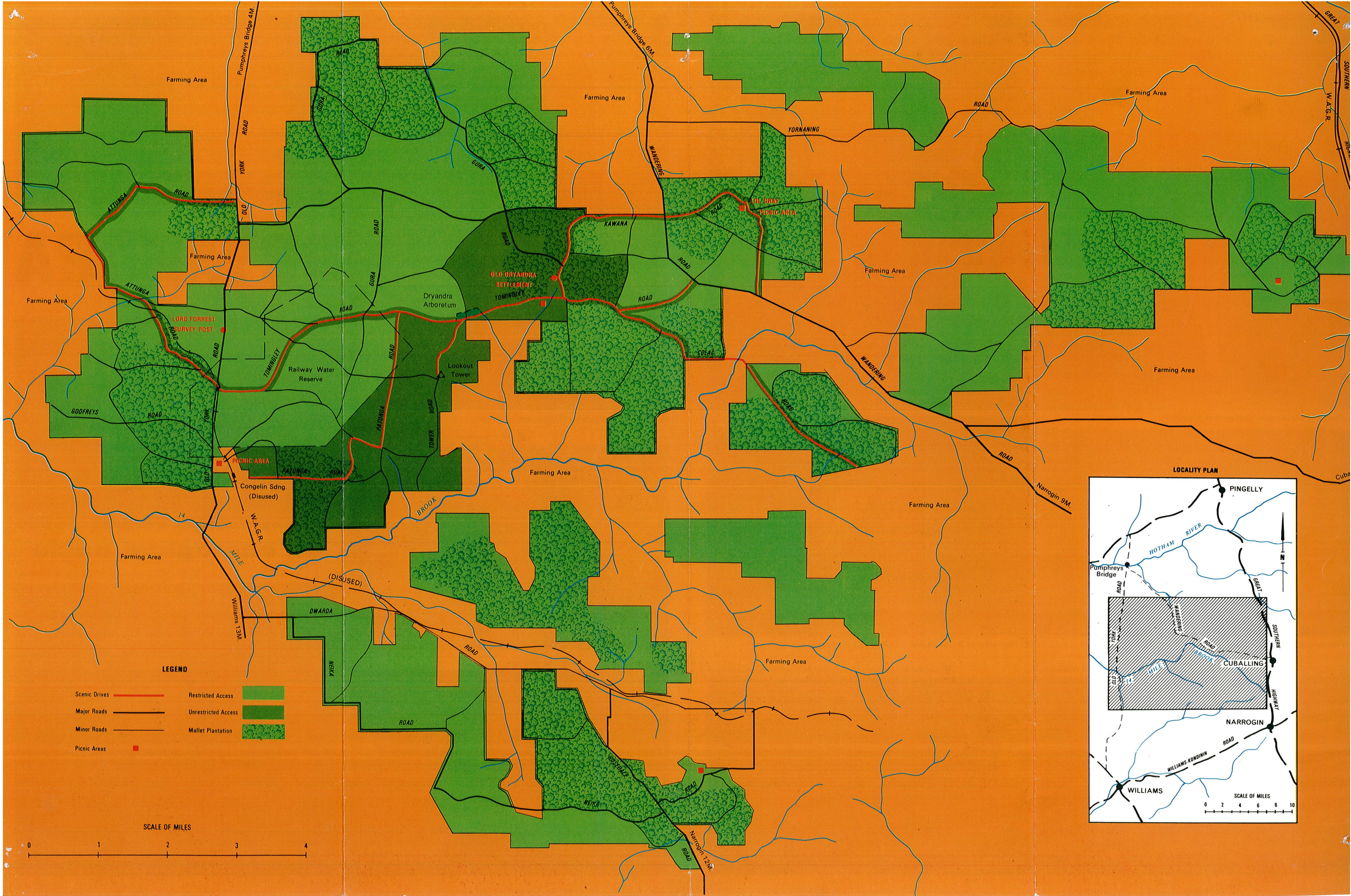
▼ Yellow robin (*Eopsaltria griseogularis*)



an ecological oasis

▼ Red leschenaultia (*Leschenaultia formosa*)





LEGEND

- Scenic Drives —
- Major Roads
- Minor Roads
- Picnic Areas ■
- Restricted Access
- Unrestricted Access
- Mallet Plantation

SCALE OF MILES

