

LIBRARY

Department of Biodiversity,
Conservation and Attractions

This PDF has been created for digital preservation. It may be used for research but is not suitable for other purposes. It may be superseded by a more current version or just be out-of-date and have no relevance to current situations.

HAMERSLEY RANGE NATIONAL PARK

Welcome to Hamersley Range National Park, this area was placed under the control of the National Parks Authority in October, 1969 and consists of 590 206 hectares of spectacular mountains, gorges, water courses and plateaux.

This is a very ancient area, for example rocks in Dales Gorge area have been given an age of between 1600 million and 2000 million years. The park abounds with both wildflowers and wildlife although to see much of this will necessitate a short walk from intensive use areas. Animals and birds are most active during early morning or evening.

Quite good public roads go to all the areas mentioned. Please do not drive off road as severe damage is done to the vegetation and the spinifex, even when green, may set fire to your vehicle.

To protect the wildlife and the enjoyment of the park by visitors, dogs and firearms are not permitted. Remember all things are protected and must be left and undamaged for the enjoyment of others.

Average rainfall for the area is 250 mm to 300 mm; the temperature varies from a night-time minimum of -4° C, to be expected around July, to a day temperature of up to 49° C in February.

CAMPING

Areas for camping are established beyond the top of Yampire Gorge, also near Circular Pool, at Joffre Falls and Red Gorge.

PICNIC

Picnic areas will be found at Circular Pool, near Fortescue Falls in Dales Gorge, Kalamina Gorge, Joffre Falls and Red Gorge and also Yampire Gorge.

FACILITIES

At both the camping and picnic sites you will find the following facilities -

- a) Barbecues - please no ground fires
- b) Picnic tables and seats
- c) Bush toilets
- d) Rubbish bins
- e) Walking tracks to the bottom of Circular Pool, Fortescue Falls, Kalamina Gorge and Weano Gorge.

CAUTION

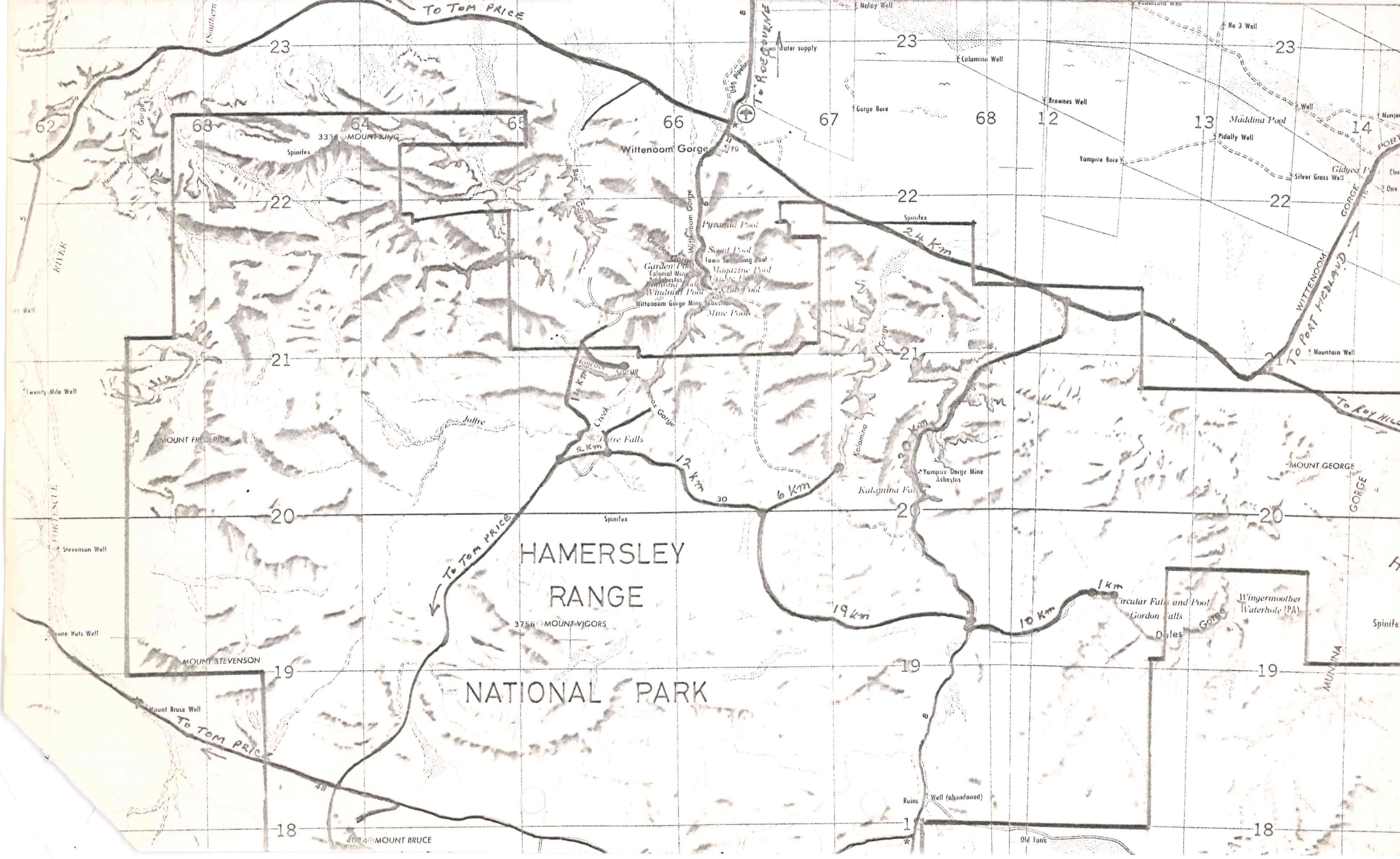
Care must be exercised when walking in the vicinity of the gorges and it is suggested that strong footwear is worn, and rocks near the edges avoided.

WATER

The only water is at the bottom of the gorges. Many people swim in these pools, they are fairly cold, about 16° C. Please assist by not using soap or detergent in these pools; it will kill the marine life very quickly.

The area is serviced daily by Rangers. Should you have any queries please contact the Ranger on patrol or in Wittenoom.

Enjoy your visit.



To Tom Price

To Roe Highway

To Port Hedland

To Roy Hill

HAMERSLEY RANGE

NATIONAL PARK

3338 MOUNT KING

3756 MOUNT VIGORS

4024 MOUNT BRUCE

MOUNT STEVENSON

Mount Bruce Well

MOUNT FREDERICK

Wittenoom Gorge

Pyramid Pool

Scout Pool

town Swimming Pool

Magazine Pool

Club Pool

Wittenoom Gorge Mine

Wittenoom Gorge Mine

Wittenoom Gorge Mine

Wittenoom Gorge Mine

Wittenoom Gorge Mine

Wittenoom Gorge Mine

Wittenoom Gorge Mine

Wittenoom Gorge Mine

Wittenoom Gorge Mine

Wittenoom Gorge Mine

Wittenoom Gorge Mine

Wittenoom Gorge Mine

Wittenoom Gorge Mine

Wittenoom Gorge Mine

Wittenoom Gorge Mine

Wittenoom Gorge Mine

Wittenoom Gorge Mine

Wittenoom Gorge Mine

Wittenoom Gorge Mine

Wittenoom Gorge Mine

Wittenoom Gorge Mine

Wittenoom Gorge Mine

Wittenoom Gorge Mine

Wittenoom Gorge Mine

Wittenoom Gorge Mine

Wittenoom Gorge Mine

Wittenoom Gorge Mine

Wittenoom Gorge Mine

Wittenoom Gorge Mine

Wittenoom Gorge Mine

Wittenoom Gorge Mine

Wittenoom Gorge Mine

Wittenoom Gorge Mine

Wittenoom Gorge Mine

Wittenoom Gorge Mine

Wittenoom Gorge Mine

Wittenoom Gorge Mine

Wittenoom Gorge Mine

Wittenoom Gorge Mine

Wittenoom Gorge Mine

Wittenoom Gorge Mine

Wittenoom Gorge Mine

Gorge Bare

Brownes Well

No 3 Well

Colamina Well

Yampire Bare

Maddina Pool

Pidally Well

Silver Grass Well

Munjang

Eboth

One 1

Glided 1

Mountain Well

Wittenoom Gorge

Wittenoom Gorge

Wittenoom Gorge

Wittenoom Gorge

Wittenoom Gorge

Wittenoom Gorge

Wittenoom Gorge

Wittenoom Gorge

Wittenoom Gorge

Wittenoom Gorge

Wittenoom Gorge

Wittenoom Gorge

Wittenoom Gorge

Wittenoom Gorge

Wittenoom Gorge

Wittenoom Gorge

Wittenoom Gorge

Wittenoom Gorge

Wittenoom Gorge

Wittenoom Gorge

Wittenoom Gorge

Wittenoom Gorge

Wittenoom Gorge

Wittenoom Gorge

Wittenoom Gorge

Wittenoom Gorge

Wittenoom Gorge

Wittenoom Gorge

Wittenoom Gorge

Wittenoom Gorge

Wittenoom Gorge

Wittenoom Gorge

Wittenoom Gorge

Wittenoom Gorge

Wittenoom Gorge

Wittenoom Gorge

Wittenoom Gorge

Wittenoom Gorge

Gorge Bare

Brownes Well

No 3 Well

Colamina Well

Yampire Bare

Maddina Pool

Pidally Well

Silver Grass Well

Munjang

Eboth

One 1

Glided 1

Mountain Well

Wittenoom Gorge

Wittenoom Gorge

Wittenoom Gorge

Wittenoom Gorge

Wittenoom Gorge

Wittenoom Gorge

Wittenoom Gorge

Wittenoom Gorge

Wittenoom Gorge

Wittenoom Gorge

Wittenoom Gorge

Wittenoom Gorge

Wittenoom Gorge

Wittenoom Gorge

Wittenoom Gorge

Wittenoom Gorge

Wittenoom Gorge

Wittenoom Gorge

Wittenoom Gorge

Wittenoom Gorge

Wittenoom Gorge

Wittenoom Gorge

Wittenoom Gorge

Wittenoom Gorge

Wittenoom Gorge

Wittenoom Gorge

Wittenoom Gorge

Wittenoom Gorge

Wittenoom Gorge

Wittenoom Gorge

Wittenoom Gorge

Wittenoom Gorge

Wittenoom Gorge

Wittenoom Gorge

Wittenoom Gorge

Wittenoom Gorge

Wittenoom Gorge

Wittenoom Gorge

Gorge Bare

Brownes Well

No 3 Well

Colamina Well

Yampire Bare

Maddina Pool

Pidally Well

Silver Grass Well

Munjang

Eboth

One 1

Glided 1

Mountain Well

Wittenoom Gorge

Wittenoom Gorge

Wittenoom Gorge

Wittenoom Gorge

Wittenoom Gorge

Wittenoom Gorge

Wittenoom Gorge

Wittenoom Gorge

Wittenoom Gorge

Wittenoom Gorge

Wittenoom Gorge

Wittenoom Gorge

Wittenoom Gorge

Wittenoom Gorge

Wittenoom Gorge

Wittenoom Gorge

Wittenoom Gorge

Wittenoom Gorge

Wittenoom Gorge

Wittenoom Gorge

Wittenoom Gorge

Wittenoom Gorge

Wittenoom Gorge

Wittenoom Gorge

Wittenoom Gorge

Wittenoom Gorge

Wittenoom Gorge

Wittenoom Gorge

Wittenoom Gorge

Wittenoom Gorge

Wittenoom Gorge

Wittenoom Gorge

Wittenoom Gorge

Wittenoom Gorge

Wittenoom Gorge

Wittenoom Gorge

Wittenoom Gorge

Wittenoom Gorge

Gorge Bare

Brownes Well

No 3 Well

Colamina Well

Yampire Bare

Maddina Pool

Pidally Well

Silver Grass Well

Munjang

Eboth

One 1

Glided 1

Mountain Well

Wittenoom Gorge

Wittenoom Gorge

Wittenoom Gorge

Wittenoom Gorge

Wittenoom Gorge

Wittenoom Gorge

Wittenoom Gorge

Wittenoom Gorge

Wittenoom Gorge

Wittenoom Gorge

Wittenoom Gorge

Wittenoom Gorge

Wittenoom Gorge

Wittenoom Gorge

Wittenoom Gorge

Wittenoom Gorge

Wittenoom Gorge

Wittenoom Gorge

Wittenoom Gorge

Wittenoom Gorge

Wittenoom Gorge

Wittenoom Gorge

Wittenoom Gorge

Wittenoom Gorge

Wittenoom Gorge

Wittenoom Gorge

Wittenoom Gorge

Wittenoom Gorge

Wittenoom Gorge

Wittenoom Gorge

Wittenoom Gorge

Wittenoom Gorge

Wittenoom Gorge

Wittenoom Gorge

Wittenoom Gorge

Wittenoom Gorge

Wittenoom Gorge

Wittenoom Gorge

Gorge Bare

Brownes Well

No 3 Well

Colamina Well

Yampire Bare

Maddina Pool

Pidally Well

Silver Grass Well

Munjang

Eboth

One 1

Glided 1

Mountain Well

Wittenoom Gorge

Wittenoom Gorge

Wittenoom Gorge

Wittenoom Gorge

Wittenoom Gorge

Wittenoom Gorge

Wittenoom Gorge

Wittenoom Gorge

Wittenoom Gorge

Wittenoom Gorge

Wittenoom Gorge

Wittenoom Gorge

Wittenoom Gorge

Wittenoom Gorge

Wittenoom Gorge

Wittenoom Gorge

Wittenoom Gorge

Wittenoom Gorge

Wittenoom Gorge

Wittenoom Gorge

Wittenoom Gorge

Wittenoom Gorge

Wittenoom Gorge

Wittenoom Gorge

Wittenoom Gorge

Wittenoom Gorge

Wittenoom Gorge

Wittenoom Gorge

Wittenoom Gorge

Wittenoom Gorge

Wittenoom Gorge

Wittenoom Gorge

Wittenoom Gorge

Wittenoom Gorge

Wittenoom Gorge

Wittenoom Gorge

Wittenoom Gorge

Wittenoom Gorge

Gorge Bare

Brownes Well

No 3 Well

Colamina Well

Yampire Bare

Maddina Pool

Pidally Well

Silver Grass Well

Munjang

Eboth