

LIBRARY

Department of Biodiversity,
Conservation and Attractions

This PDF has been created for digital preservation. It may be used for research but is not suitable for other purposes. It may be superseded by a more current version or just be out-of-date and have no relevance to current situations.



LEEWIN NATURALISTE NATIONAL PARK

CALM LIBRARY ARCHIVE
NOT FOR LOAN

CAPE NATURALISTE WALK TRAILS



FROM THE TRAIL SOUTHWARDS TO SUGARLOAF ROCK.

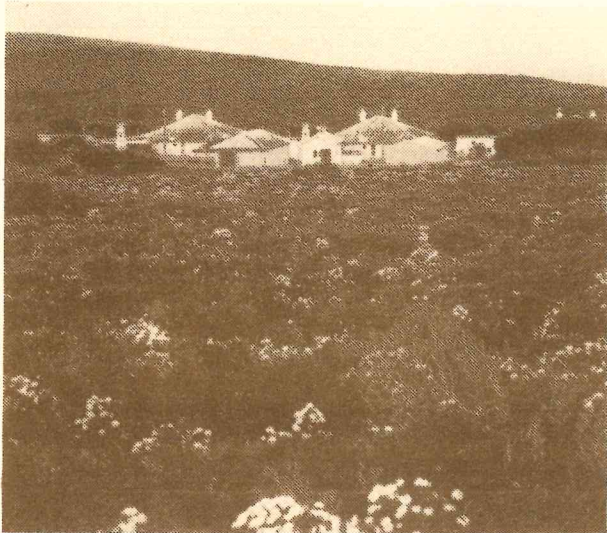
PAM01823



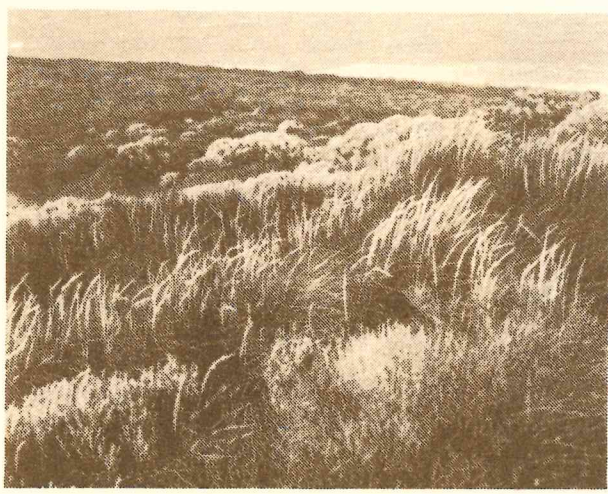
it does embrace some magnificent scenery and important natural habitats including sea cliffs, coastal heaths, outliers of Karri forest, swamps, caves and other karst features.

In order to help protect your National Park we would appreciate your assistance as follows:

1. Fire should be confined to the use of portable stoves or the barbecues provided. Open fires are dangerous. Always keep an eye on any fire or stove when it is alight.
2. All vehicles are required to remain on the approved roads as shown on this brochure or as indicated by directional signs. If you are confronted by a vehicle on the walk trails please advise the Ranger.
3. It is hard for park rangers to patrol the walk trails as often as they would like. Please help to reduce the need by taking home any litter you see or by depositing it in a rubbish bin.



Looking north from near West Coast Track. The Cape Naturaliste Lighthouse complex with flowering pimelea and various heaths in the foreground.



Low wind trimmed heath and marram grass found on the west of the Cape Naturaliste Ridge.

4. All native plants and wildlife are protected, and therefore no firearms or domestic animals are permitted in the park, so please, no dogs.

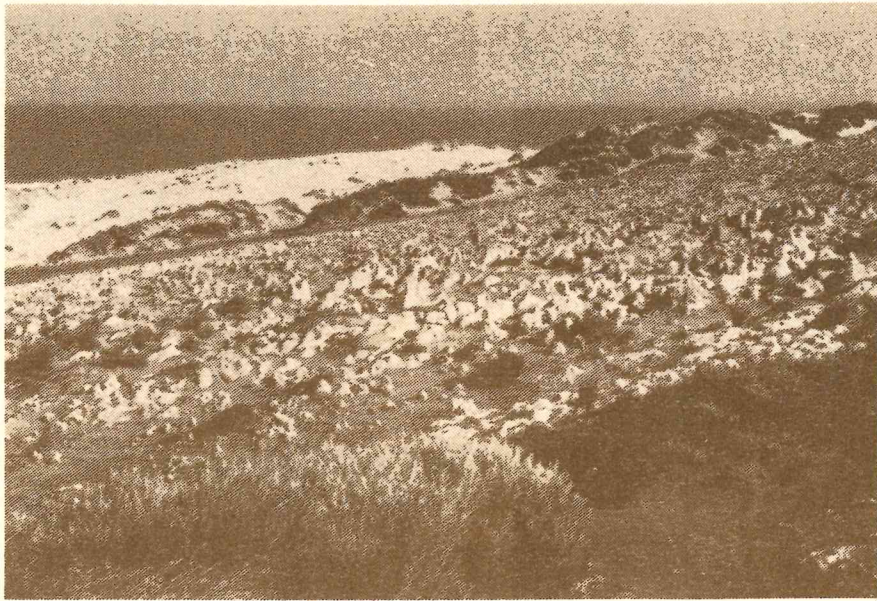
For further information on the area and other points of interest in the Leeuwin-Naturaliste National Park, please contact the Ranger in charge of the Yallingup-Cape Naturaliste area. His office is on the road to Yallingup Cave and his telephone number is (097) 55 2144.

Your ideas and comments may be useful in helping in the planning of future walks in the area. Please contact the Ranger or write to the Southern Regional Superintendent, 63 Serpentine Road, Albany, W.A. 6330.

Thank you,

Issued by —

THE DIRECTOR OF NATIONAL PARKS
C.C. SANDERS
NATIONAL PARKS AUTHORITY
Hackett Drive,
Crawley,
Western Australia 6009.



A section of exposed capstone through which the trail passes on Cape Naturaliste.

THE CAPE NATURALISTE WALK TRAILS have been provided for the enjoyment of park visitors who wish to undertake short walks and enjoy fine scenery in the Cape Naturaliste area.

The main footpath leads from Bunker Bay car park to the lighthouse and down towards Cape Naturaliste. Other paths link the main trail with the West Coast car park and with the sea cliffs in the vicinity of the Lighthouse. All these paths are well used and easy to follow. Signs showing directions have been installed at major footpath intersections.

The more adventurous may enjoy walking the trail along the **top** of the cliff edge. This route is harder to follow and is more rugged underfoot but it provides magnificent views of the sea cliffs and across Geographe Bay towards Busselton.

As a rough guide, visitors should allow about 2½ hours for a walk from Bunker Bay to Cape Naturaliste via the Lighthouse, returning along the cliff edge path. Alternatively, by using the path from the Lighthouse to the cliff edge the circuit may be reduced to about 1½ hours duration.

Cape Naturaliste has three distinct forms of vegetation.

A small area of woodlands grows in sheltered localities at Bunker Bay and at the base of cliffs on the north of the Cape, consisting predominantly of Rottneest tea tree, *Melaleuca lanceolata*, with associated Marri, *Eucalyptus calophylla*, and Peppermint, *Agonis flexuosa*.

A sometimes dense scrub of wind-pruned Marri grows higher on the Ridge, particularly south and east of the Lighthouse.

In the more exposed parts of the Cape to the north and west of the Lighthouse, a heath covers the sand and capstone providing a very picturesque landscape when in bloom. The fauna is both interesting and diverse but normally secretive so look carefully.

The seascape provides an abundance of sea birds, and sometimes the spectacular sight of whales breaching the surface.

We hope you enjoy your walk. The next stage we anticipate will be to extend the footpath from Cape Naturaliste southward along the coast to Sugarloaf Rock.

THE LEEUWIN-NATURALISTE NATIONAL PARK comprises the 80km coastal strip from Cape Naturaliste to Cape Leeuwin. Although the park does not extend more than a few kilometres inland,

