

# LIBRARY

Department of Biodiversity,  
Conservation and Attractions

This PDF has been created for digital preservation. It may be used for research but is not suitable for other purposes. It may be superseded by a more current version or just be out-of-date and have no relevance to current situations.

# Bookings and Enquiries

## First book by phone

Phone The Hills Forest weekdays between 8.30 am and 2.30 pm on (08) 9295 6149, fax on (08) 9295 3247 or email: [jillf@calm.wa.gov.au](mailto:jillf@calm.wa.gov.au).

## Confirmation letter

A confirmation letter with details of your PD day, excursion or activity will then be forwarded to you.

## Send your payment

Please make cheques payable to:  
Department of Conservation and Land Management  
and send to:

Exploring The Hills Forest School Programs  
CALM, The Hills Forest,  
Mundaring Weir Rd.,  
MUNDARING WA 6073

## Cancellations

Please phone, then confirm your cancellation **in writing by fax** at least one week prior to your visit.

## Find out more

Teachers can find out about all CALM's educational programs in the 'For Schools' section of CALM's NatureBase Internet site at <http://www.naturebase.net>

## Note:

All costs in this brochure include 10% GST.

Our programs and activities are curriculum based so the GST can be reclaimed.



The Hills Forest Discovery Centre is a smoke-free zone

Exploring

# The Hills Forest

with your primary students in 2001



Exploring The Hills Forest conservation education programs are based in the jarrah forest near Mundaring. They provide many excursion and camp opportunities and classroom resources that support the outcomes-focused approach of all curriculum learning areas.

PAM02506

## About CALM

The Department of Conservation and Land Management (CALM), in partnership with the community, has the task of conserving Western Australia's biodiversity, and managing the lands and waters entrusted to it, for the benefit of present and future generations. The area managed is a significant portion of the State, including national parks, State forests, nature reserves, marine parks and timber reserves. It is a large task and one that requires the awareness, understanding and involvement of the wider community.



- **The Hills Forest**  
CALM initiated The Hills Forest to raise awareness and appreciation of the values and management of our forests. It offers visitors of all ages a range of outdoor experiences in the forest environment of Mundaring.
- **Exploring The Hills Forest programs**  
These programs have been developed for school students as part of The Hills Forest project. They have been written by local educators for local students. Since 1993, more than 70,000 students and teachers have been through our programs and the demand is growing.

### What's New?

- \$50 voucher for 'new' teachers attending a PD and booking an excursion—tell a colleague.
- \$50 voucher for Monday 2-class bookings.
- Forest Detective Trail—new excursion for Years 4 & 5.
- Coolangers, Corroborees and Kaleeps—new Aboriginal culture excursion for Years 4 & 5.
- Bush Tucker Supper with our Aboriginal leaders.
- Monitoring Marsupials—camp and take part in Western Shield research.
- Inservicing at your school.

We now offer activities for every year level. Each program includes an excursion to The Hills Forest, which is guaranteed to be interactive, informative and exciting.

# 1 Discovering The Hills Forest for Years 6 & 7

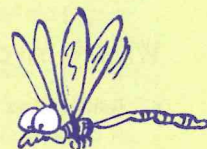
This program explores the jarrah forest ecosystem. It fulfils outcome requirements in all learning areas, particularly the core value of Environmental Responsibility. Students learn to lessen their impact on the forest and its resources.

### What one teacher had to say about the program:

*The varied content and hands-on excursion activities were excellent. The resource package was great and supported our work on Primary Investigations and First Steps — Daphne*

### What's involved:

- **Teacher Professional Development (PD) day in the forest**  
This gives teachers an overview of our programs, a resource package and experience of the activities students will encounter during excursions.
- **Pre-visit and post-visit activities at school**  
Teachers use the resource package to prepare students for the excursion, and follow up afterwards.
- **Student excursion**  
A one-day field trip into the forest led by CALM Education Officers.
- **Student numbers**  
Minimum: 25 students per class
- **Cost**  
PD day: \$49.50 per teacher (includes lunch and resource package)  
Excursion: \$6.60 per student
- **Time**  
Excursion: 10 am to 2.00 pm
- **When**  
PD days: see dates under Professional Development 2001  
Excursions: Weekdays, 1st March to 30th November



## 2 Catchment Carers' Trail for Years 5, 6 & 7

A learning program about the water cycle, catchments and water resource management run jointly by CALM and the Water Corporation. It leads to investigations in all strands of the Society and Environment learning area, particularly Place and Space, Resources and Natural and Social Systems.

### What teachers had to say about the program:

*The excursion was worth 20 classroom lessons; very professionally run. — Suzanne*

*I was impressed with the overall quality of the program — Jason*

### What's involved

#### Teacher and Student Resource Notes

A booklet of notes will be forwarded to teachers who book the excursion. A PD day is recommended.

#### Pre-visit and post-visit activities at school

Teachers may use the notes to prepare students for the excursion and follow-up.

#### Student excursion

A one-day field trip that includes:

An interactive walk trail, focusing on issues such as salinity, erosion, nature conservation and the water cycle. A tour of the Mundaring Weir, its history and use as part of an integrated water system.

*Note: There is no access to the reservoir water body during this excursion.*

#### Student numbers

Minimum: 25 students per class

#### Cost

Excursion: \$4.95 per student

Note:—\$50 voucher for Monday, two-class bookings!

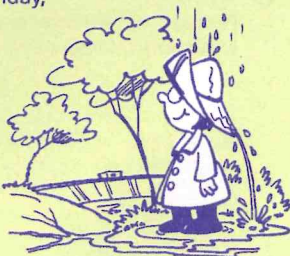
#### Time

9.45 am to 2.00 pm

#### When

Weekdays

Terms 1, 2, 3 and Term 4  
until 16th November



## 3 Threatened Species program for Years 5, 6 & 7

### Back from the Brink Excursion

A program to raise student awareness of Western Australia's threatened species and current CALM projects aimed at preventing further extinctions. This program fulfils student outcomes required by Society and Environment and Science learning areas and addresses the core value of Environmental Responsibility.



### What one teacher had to say about the program:

*A relevant and practical program for students to learn how to assist threatened species. A must for every Society and Environment and Science teacher and student. — David*

### What's involved?

#### Western Shield Action Pack for pre- and post-visit activities

This Action Pack will be forwarded to teachers who book the excursion. The pack contains teacher notes, resource sheets and activity sheets for classroom work, and suggestions for extension activities that link with the curriculum.

The Action Pack is also available in the 'For Schools' section of CALM's NatureBase Internet site at <http://www.naturebase.net>

#### Student excursion

A one-day field trip that includes:

A hands-on session participating in CALM's research methods

A tour of The Hills Forest's animal habitat project

A close encounter with threatened native animals

#### Student numbers

Minimum: 25 students per class

#### Cost

Excursion: \$6.60 per student

Note:—\$50 voucher for Monday, two-class bookings!

#### Time

10.00 am to 2.00 pm

#### When

Weekdays

Win!!

## A Back from the Brink Excursion

Classes that complete the activities can enter a draw to one of three excursions to The Hills Forest.

### What teachers had to say about the program:

*The Action Pack, visit to The Hills Forest and the follow-up Powerpoint presentations from the students was the most worthwhile exercise my Year 7 class has done all year. — Vic*

### What's involved?

#### ○ Western Shield Action Pack

Complete the activities in the pack with your class. Send the registration form with the completed Activity Sheets from ONE of your students and a poster promoting CALM's Western Shield program saving threatened species to:

*Win a Back from the Brink excursion*

The Hills Forest Discovery Centre

Mundaring Weir Rd, Mundaring 6073

Successful classes will be notified by 26th October and a date arranged for your excursion

#### ○ Student excursions

A one-day field trip which includes:

A hands-on session participating in CALM's research methods.

A tour of The Hills Forest's animal habitat project.

A close encounter with threatened native animals.



#### ○ Student numbers for excursion

One class of students

#### ○ Cost

Obtain a quotation for bus travel. Fax this and send the invoice to The Hills Forest. No excursion fee.

#### ○ Time for excursion

10.00 am to 2.00 pm

#### ○ When

November, date to be arranged



## Country schools

### Bunbury and Narrogin areas

Classes in the Bunbury and Narrogin areas that complete the activities in the Action Pack can enter a draw to win an excursion to Wellington Discovery Forest (Bunbury and Collie area) or Dryandra Woodland Ecology Centre (Narrogin).

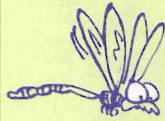
Enquiries: Tel: (08) 9334 0387 or fax: (08) 9334 0498



## 4

## Forest activities for Years 1 to 7

Year-round excursion activities to suit your needs, focusing on the forest environment, plants, birds, spiders, reptiles and invertebrates. All activities help to instil the value of Environmental Responsibility and the need to maintain the Diversity of Species.



### What's involved?

Teachers choose one or more of the activities listed below to make up an excursion day or to enrich a school camp.

#### ○ Monitoring Marsupials (Years 6 & 7) NEW!!

A unique opportunity for students on camp to be part of Western Shield research; to set traps and check them the next morning; to measure the head length of a wild chuditch or check the pouch of a bandicoot. Limited offer for 3 classes only.

**Duration:** 2 hours (1hr pm, 1hr am)  
**When:** May, October or November  
**Cost:** \$4.50 per student  
**Minimum:** 25 students  
**Maximum:** 1 class

#### ○ Bush Tucker Supper (Years 5, 6 & 7) NEW!!

Enjoy an evening in our campsite with Nyoongar leaders, learn about Nyoongar nutrition and then make and eat a damper and kangaroo supper while listening to Dreamtime stories.

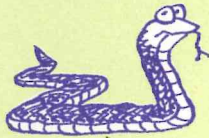
**Duration:** 2 hours  
**Cost:** \$6.60 per student  
**Minimum:** 30 students  
**Maximum:** 1 class



#### ○ Place and Space for Reptiles (Years 4 to 7)

A chance to touch a real live skink, python or lizard at the Centre. Students learn that the care of places provides spaces for a diversity of species.

**Duration:** 1 hour  
**Cost:** \$3.30 per student  
**Minimum:** 25 students  
**Maximum:** 1 class



#### ○ Night Life and Living (Years 3 to 7)

Students will recognise the interdependence of life as the forest comes alive after dark. Make this part of your camp at The Hills Forest camp ground.

**Duration:** 1.5 hours  
**Cost:** \$3.00 per student  
**Minimum:** 25 students  
**Maximum:** 1 class



#### ○ Spiders—A Diversity of Species (Years 1 to 7)

Students will learn to value our amazing arachnids and the importance of maintaining a diversity of species.

**Duration:** 1 hour or 2 hours  
**Cost:** \$2.20 (1 hr session) or \$3.30 (2 hr session)  
**Minimum:** 25 students  
**Maximum:** 1 class  
**When:** 1st March to 15th June;  
 15th Oct to 20th Dec



#### ○ Investigating the Underworld (Years 1 to 7)

Students will investigate, communicate and participate in a hands-on search of the jarrah forest underworld. They will explore the lives of beetles, bugs, spiders, ants, scorpions, earwigs, mantises and many more.

**Duration:** 1 hour or 2 hours  
**Cost:** \$2.20 (1 hr session) or \$3.30 (2hr session)  
**Minimum:** 25 students  
**Maximum:** 1 class

#### ○ Earth-friendly Paper (Years 1 to 7)

Students make recycled paper—a hands-on, earth-friendly activity using natural bush products.

**Duration:** 2 hours  
**Cost:** \$4.40 per student  
**Minimum:** 25 students  
**Maximum:** 1 class



# 5 Forest Detective Trail

## for Years 4 & 5

New!!

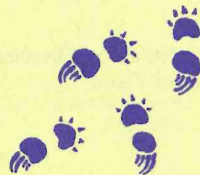
- **Frogs—environmental watchdogs (Years 1 to 7)**  
Students will discover the value of frogs and then learn where to find them in the forest.  
**Duration:** 2 hours  
**Cost:** \$3.85 per student  
**Minimum:** 25 students  
**Maximum:** 1 class  
**When:** 1st June to 21st September
  
- **Sense-ational Trail (Years 1 to 7)**  
Using blindfolds, students explore the forest along our rope-walk, using their senses of smell, touch and hearing.  
**Duration:** 1 hour  
**Cost:** \$2.20 per student  
**Minimum:** 25 students  
**Maximum:** 1 class
  
- **Raptors' Life and Living (Years 1 to 7)**  
Students will have a close encounter with these amazing birds of prey. Choose your focus of study: their five senses, feathers and flight, anatomy and adaptations, rehabilitation, the part they play in the ecosystem or the human impact on them.  
**Duration:** 1 hour  
**Cost:** \$3.30 per student  
**Minimum:** 25 students  
**Maximum:** 1 class
  
- **Animal Encounters (Years 1 to 7)**  
Students will understand the importance of the diversity of species. This session will promote a sense of environmental responsibility and the need for conservation of species.  
**Duration:** 1 hour  
**Cost:** \$3.30 per student  
**Minimum:** 25 students  
**Maximum:** 1 class



Students use their investigating and inquiry skills to solve a mystery and track down an animal by identifying footprints, scats, skin and other signs along the trail.

### What's involved:

- **Teacher PD day in the forest**  
Attendance at a PD day is important. It provides teachers with an overview of the day and a chance to experience excursion activities.
  
- **Pre-visit and post-visit activities at school**  
Teachers prepare students for the excursion and follow up afterwards using CALM's resources for the classroom.
  
- **Student excursion**  
Activities include a secret investigators 'case briefing' session and a prime suspect trail that helps solve the mystery.
  
- **Student numbers**  
Minimum: 25 students per class
  
- **Cost**  
PD day: \$49.50 per teacher (includes lunch and resources)  
Excursion: \$6.60 per student
  
- **Time**  
10.00 am to 2.00 pm
  
- **When**  
PD days: see dates under Professional Development 2001  
Excursions: Weekdays, Terms 2, 3 and 4 until 30th November



# 6 Busy in the Forest for Pre-primary to Year 3

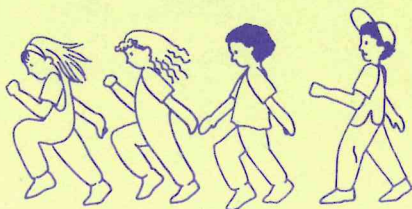
A forest excursion that links with CALM's Early Childhood Forest Pack for the classroom. Includes a sensory trail and an opportunity for students to meet some forest creatures.

## What one teacher had to say about the program:

*An outstanding excursion. The pace was just right with a mixture of mystery, fun and exploration. — Mary*

## What's involved:

- **Teacher PD day in the forest**  
Attendance at a PD day is essential. It provides teachers with a forest pack, an overview of the day and a chance to experience excursion activities.
- **Pre-visit and post-visit activities at school**  
Teachers prepare students for the excursion and follow-up using CALM's Forest Pack, *A Forest is a Very Busy Place*.
- **Student excursion**  
Activities include a sensory, blindfold rope-walk trail, a 'treasure' trail and an animal encounter session.
- **Student numbers**  
Minimum: 25 students per class
- **Cost**  
PD day: \$49.50 per teacher (includes lunch and forest pack)  
Excursion: \$6.60 per student  
Forest Packs: \$11.00 each, if not attending PD day (to order, phone (08) 9334 0437)
- **Time**  
10.00 am to 2.00 pm
- **When**  
PD days: see dates under Professional Development 2001  
Excursions: Weekdays, Terms 2 and 3



# 7 Aboriginal Culture Excursions (ACE) for Years 6 & 7

Join our Aboriginal leaders to explore traditional Aboriginal culture in the jarrah forest. Excursion content supports the Education Department's Aboriginal Studies materials.

## What teachers had to say about the excursion:

*Fabulous! The children learnt far more about Aboriginal Culture in four hours than a week in the classroom. — Geoff*

*The Leader really kept the interest level at a buzz. Thanks! — Anna*

## What's involved

- **Pre-visit and post-visit activities at school**  
Teachers prepare students for the excursion and follow-up using the Education Department's Aboriginal Studies materials.
- **Student excursion**  
Activities include a forest walk exploring traditional use of plants and animals, stories of the Dreaming, language, and artefact making—all with an emphasis on student participation.
- **Student numbers**  
Minimum: 25 students per class
- **Cost**  
Excursion: \$6.60 per student
- **Time**  
Excursion: 10.00 am to 2.00 pm
- **When**  
Excursions: Wednesdays or Fridays  
PD days for staff of whole school (see dates under Professional Development 2001)





8

## Coolangers, Corroborees and Kaleeps for Years 4 & 5

New!!

Our Aboriginal leaders will take students on a Nyoongar cultural journey through traditional language and ceremony, hunting and fishing skills.

### What's involved

#### ○ Pre-visit and post-visit activities at school

Teachers prepare students for the excursion and follow up afterwards using the Education Department's Aboriginal Studies materials.

#### ○ Student excursion

Activities include a role-play greeting, preparations for a hunting expedition, a successful hunt and corroboree. Students will build a fishing fence, 'catch' fish and search for turtles in the mud.

#### ○ Student numbers

Minimum: 25 students per class

#### ○ Cost

\$6.60 per student

#### ○ Time

10.00 am to 2.00 pm

#### ○ When

Excursions: Wednesdays or  
Fridays Term 2 onwards  
PD days for staff of whole  
school (see under  
Professional  
Development 2001)



9

## School Camps in the Forest

Camp under canvas at The Hills Forest Discovery Centre or Patens Brook camp sites. Alternatively, stay at the Mundaring Youth Hostel and participate in a number of our educational programs.

### What one teacher had to say about her year 6 camp:

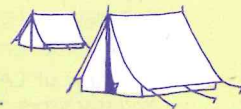
*The facilities, setting and the great variety of curriculum based activities run by welcoming and professional CALM Education Officers made this a worthwhile and special camp.*

—Karen

#### ○ The Hills Forest Discovery Centre camp ground

Suitable for disabled people

Facilities: 12 shady tent sites, camp kitchen including electric BBQs, hot showers and toilets.



Capacity: one class with adults

Cost: Groups doing Exploring The Hills Forest activities:

\$4.40 per student per night (age 4 to 15 years)

\$8.80 per adult per night (1 free adult for each group of 10 children)

Groups not doing Exploring The Hills Forest activities:

\$6.60 per student per night

\$8.80 per adult per night

#### ○ Patens Brook camp site

No vehicle access. Meet the challenge and walk three kilometres to the secluded camp site carrying all camping gear.

Facilities: Shady camp sites (15 pads), water tank and toilets, 3 fire rings.

Capacity: one large class

Cost: \$3.30 per person per night.

#### ○ Mundaring Youth Hostel

Overlooking the Helena River valley enjoy the comfort and tranquillity of the hostel, one kilometre from The Hills Forest Discovery Centre.

Facilities: 36 beds. Capacity for 50, extra mattresses available. Cooking facilities or have your meals prepared for you.

Cost: \$8.80 per student per night, \$16.00 per adult per night (one free adult per group), \$50.00 deposit is required when making your booking.

# Professional Development 2001

The Hills Forest PD days are a good way for teachers to familiarise themselves with the range of CALM educational resources and opportunities offered at The Hills Forest. They help teachers make the most of their visit to the forest.

NOTE: Attending a PD day is a pre-requisite for 'Discovering The Hills Forest for Years 6 and 7' and 'Busy in the Forest for Early Childhood Students'. A PD day is advisable for all other programs.



## ○ Provides:

An overview of excursion opportunities

Experience of some excursion activities for students

A review of CALM educational packages and resources

A tour of the jarrah forest and discussion of forest management with a CALM officer

Lunch

## ○ Dates for Exploring The Hills Forest PD

Term 1: Saturday 10th March

Term 2: Saturday 5th May and 9th June

Term 3: Saturday 4th August

## ○ Cost

\$49.50 per teacher and \$25.00 per student teacher (includes lunch and relevant resources)

## ○ Time

Exploring The Hills Forest PD: 9.00 am to 3.30 pm

## Principals please note

**New Opportunity . . . Inservicing at your school**

**We will visit your school during a pupil-free School Development day to give you an overview of our resources and programs. Call us to make arrangements**

# Whole school staff PD

Available to schools on request. The Hills Forest Activity Centre provides a pleasant environment away from school, where teachers can get to know their colleagues. The day will enrich their teaching programs.

also available Whole school staff PD - focus on Aboriginal Culture

## ○ Cost

\$35.00 per teacher, minimum of 20 teachers, support staff and interested parents.

Enquire early as School Development and Planning Days are soon booked out.

## SPECIAL OPPORTUNITY

Upper Primary and Secondary school teachers  
*Be a CALM Nature Conservation Officer for a night!*

This is an opportunity for teachers to find out about CALM's Western Shield Schools Program and to experience the methods being used to bring wildlife back from the brink of extinction.

For teachers who have not yet used the *Western Shield Action Pack*.



## What's involved

### ○ Provides:

Hands-on experience of CALM's research monitoring methods—setting and checking traps for forest fauna.

A chance to meet and question CALM Nature Conservation Officers.

A close encounter with threatened species.

Find out how animals are being bred in captivity and rehabilitated into the wild.

Free Action Pack and other resources for use in school.

### ○ Cost

\$27.50 (inc accommodation, meals, resources)

### ○ Time

5.00 pm to 12 noon next day.

### ○ When

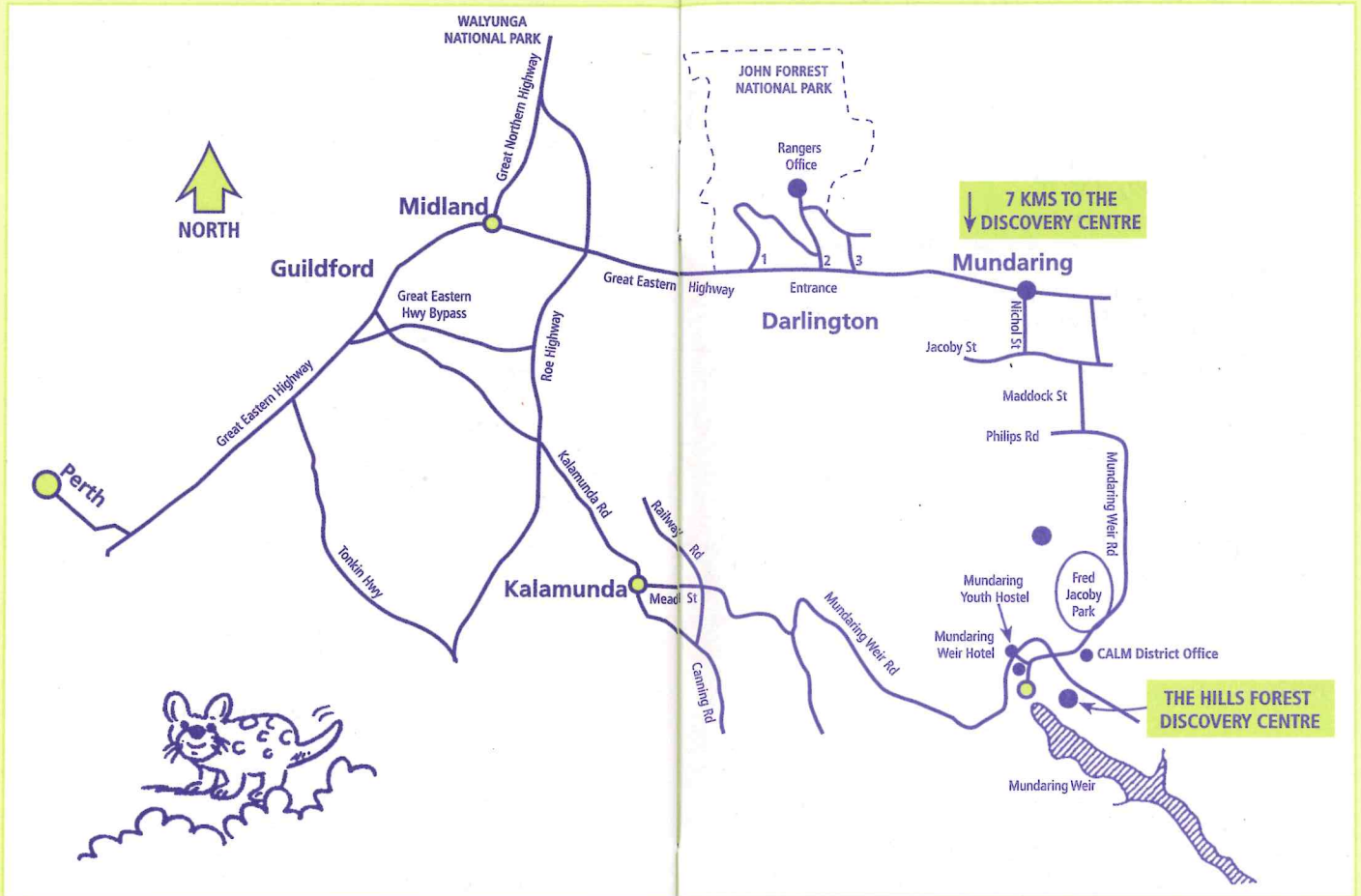
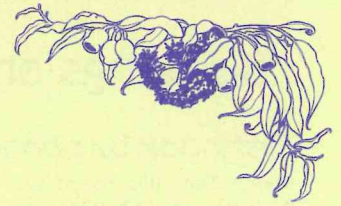
Friday 25th May to Saturday 26th May

Friday 24th August to Saturday 25th August

### ○ Accommodation

Mundaring Youth Hostel

# The way to The Hills Forest Discovery Centre



Tell me and I'll forget;  
show me and I may remember;  
involve me and I'll understand.

— Chinese proverb