

LIBRARY

Department of Biodiversity,
Conservation and Attractions

This PDF has been created for digital preservation. It may be used for research but is not suitable for other purposes. It may be superseded by a more current version or just be out-of-date and have no relevance to current situations.

Roadside Conservation Committee

Roadside Conservation Committee

Members

John Blyth, Chairman Department of Conservation and Land Management, W.A. Telephone: 386 8811

c/- PO Box 104
COMO 6152

Penny Hussey,
Executive Officer Department of Conservation and Land Management, W.A. Telephone: 367 0333

c/- PO Box 104
COMO 6152

DAVID A. LAMONT

A/Executive Officer

Roadside Conservation Committee Ph: (09) 367 0423

P.O. Box 104, Como 6152

Other members and the groups they represent are:

Bush Fires Board
Conservation Interests
Country Shire Councils' Association
Country Shire Councils' Association
Department of Agriculture
Greening Australia
Main Roads Department
Westrail

John Robley
Joanna Seabrook
Joseph North
Ian Purse
Greg Hamilton
Brett Loney
Gary Norwell
Peter Bothwell

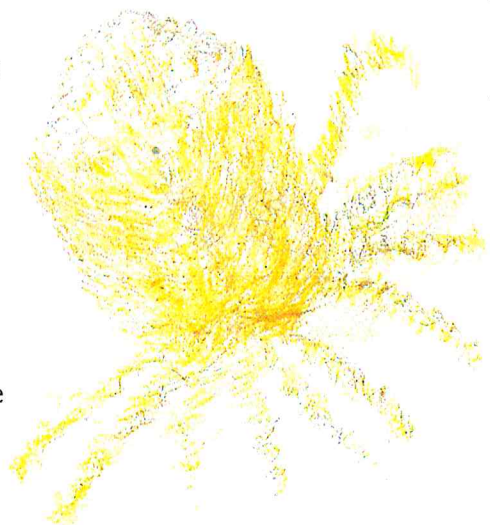


Introduction

Native plants along roadsides often provide the traveller's first contact with Western Australia's world famous wildflowers and eucalypt trees.

Over much of the State, roadsides are reservoirs of plant species that have been cleared from the surrounding countryside.

They also provide important habitat for many animals: a home for resident species and a hospitable corridor for migratory and nomadic ones.



What The Committee Does

The terms of reference of the RCC are: to co-ordinate and promote the conservation and effective management of rail and roadside vegetation for the benefit of the environment and the people of Western Australia.

Working within the confines of its limited resources, the Committee identifies and classifies roads with special conservation values such as those through extensively cleared agricultural land. It also provides guidelines on how to manage roadsides to best protect their native vegetation. It does not normally become involved with roadside vegetation in built-up areas.

The RCC seeks to foster communication and cooperation between various groups involved in the management of roadside vegetation.

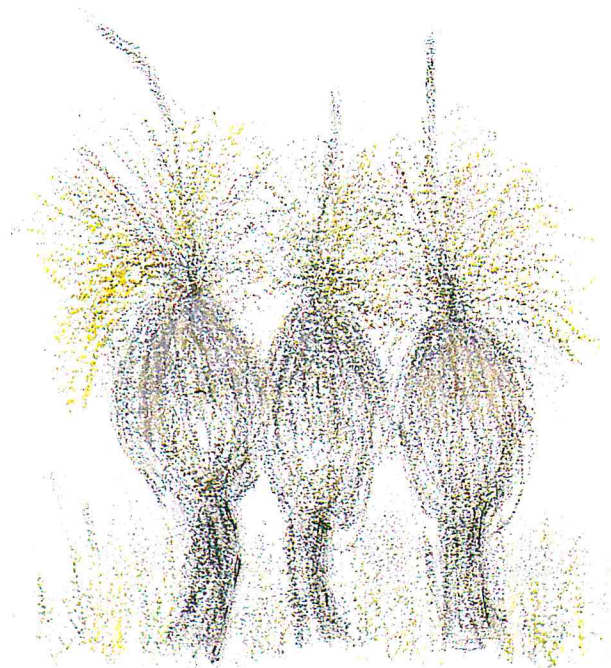
It currently meets six times a year, with two of the meetings in country centres. Meetings usually last a half-day, although country meetings incorporate a field inspection of road verges and require at least a full day.



Beginnings

The Roadside Conservation Committee (RCC) was formed in 1985 in response to concern expressed by local communities, the tourism industry, and the conservation movement over the deterioration of roadside vegetation.

The Committee has now been operating for five years, co-operating closely with Local Government Authorities, other Government Departments and voluntary organisations.



How To Contact The RCC

For the first time in the history of roadside conservation committees, a full-time Executive Officer, based in the Wildlife Branch of the Department of Conservation and Land Management, has been appointed. This officer provides liaison between the RCC, the public, and road managers, as well as servicing the committee, arranging field inspections, and pursuing research into ways of achieving the aims of the RCC.