

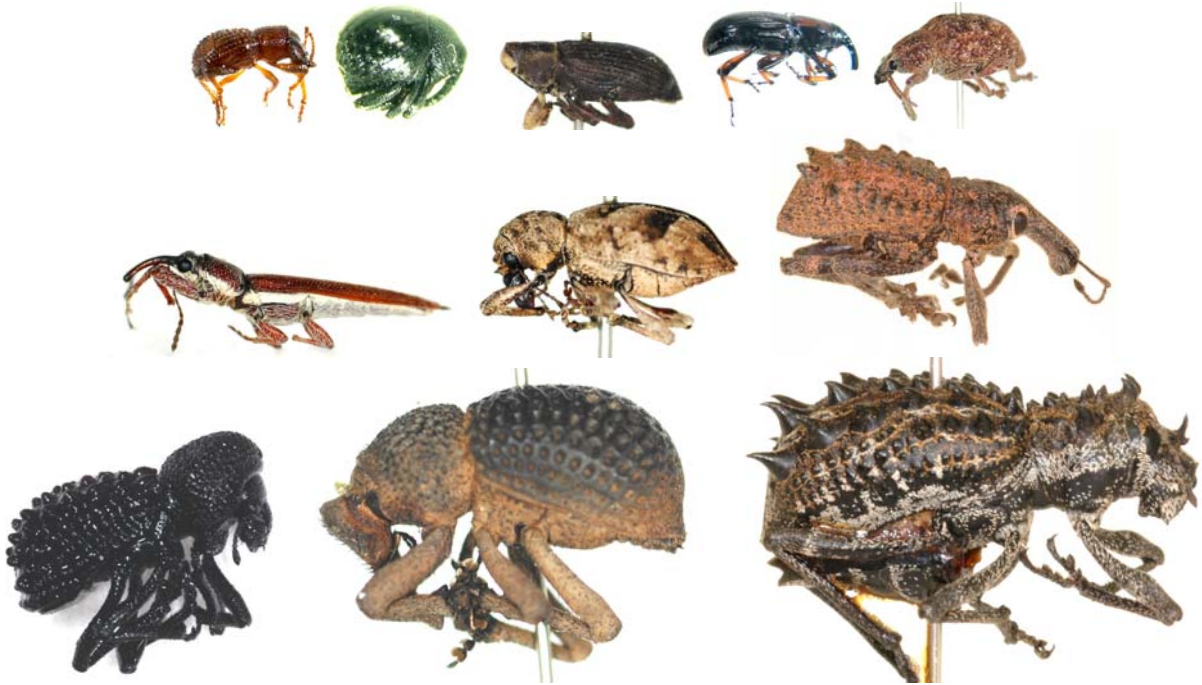
LIBRARY

Department of Biodiversity,
Conservation and Attractions

This PDF has been created for digital preservation. It may be used for research but is not suitable for other purposes. It may be superseded by a more current version or just be out-of-date and have no relevance to current situations.

Invertebrate of the Month

September-October 2009



Weevils *Weevils* W_{eevils}

Beetles in the family Curculionidae (weevils) come in all shapes and sizes, from tiny long nosed seed feeders to the large spiny short nosed Amycterines. Weevils are the most diverse group of organisms on this planet. If all the plants and animals on earth were lined up, every tenth species would be a weevil. They are mainly plant feeders and their long nose (rostrum) is thought to have evolved for boring into plant tissue to form an egg cavity. Some say that if the planet had a nuclear catastrophe, the only living creatures to survive would be cockroaches. I disagree, it would be a species of weevil.