

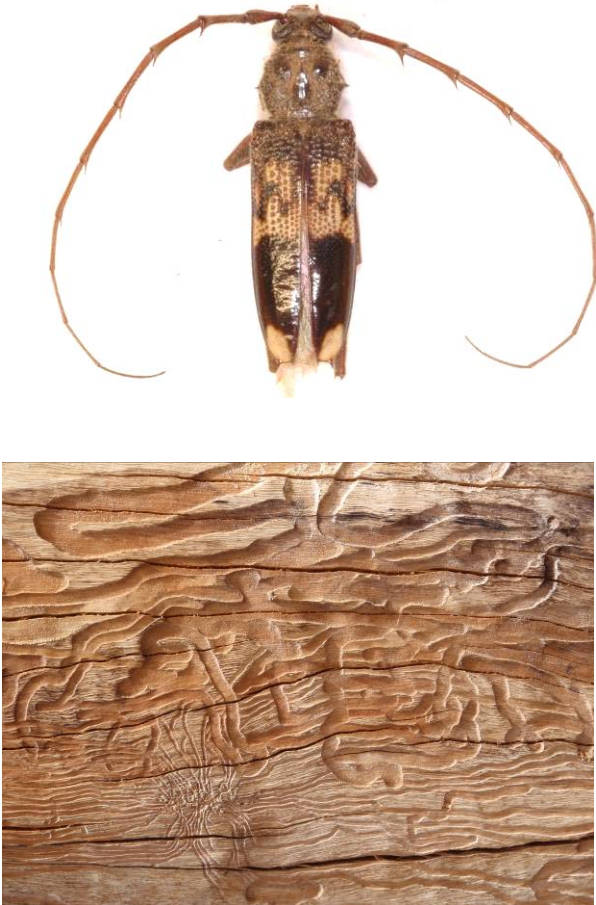
LIBRARY

Department of Biodiversity,
Conservation and Attractions

This PDF has been created for digital preservation. It may be used for research but is not suitable for other purposes. It may be superseded by a more current version or just be out-of-date and have no relevance to current situations.

Invertebrate of the Month

August 2010



Phoracantha semipunctata

This beetle belongs to the longicorn family Cerambycidae, and is commonly known as a “bardi grub”. It infests newly dead and dying eucalypts, and its presence in apparently healthy trees is a symptom of severe stress, rather than the cause of decline. Larvae carve galleries under bark in the sapwood (as shown above) and adults eventually emerge through elliptical holes. In Australia they are not known to kill trees; but as one of our more infamous exports it is considered a serious pest of eucalypts in other parts of the world. Above right is a wood sculpture of a Cerambycid beetle located in King’s Park, Perth. Interestingly the tree in which it was carved has been infested by *P. semipunctata* and the three spots on the left side of its elytra (fore wing) are adult emergence holes.