

LIBRARY

Department of Biodiversity,
Conservation and Attractions

This PDF has been created for digital preservation. It may be used for research but is not suitable for other purposes. It may be superseded by a more current version or just be out-of-date and have no relevance to current situations.



Learn about your bushland.

Land for Wildlife can offer you contact with like-minded landholders, and a chance to share in their ideas and experiences through publications, field days and other activities. Additional information is available in the form of regular newsletters and more detailed publications. Land for Wildlife fits in very well with various landcare activities. No matter what activity is considered, whether it be protecting a wetland, creek line, breakaway or granite outcrop, creating a shelter belt, rehabilitating salt land or even alley farming, a little bit of thought at the planning stage can create an area that wildlife can also use, giving multiple benefits to the property and the wildlife.

The scheme can help you to create a 'healthy ecosystem' on your property, and so move towards sustainable land use.

Registration

There are two levels of property registration, full and interim. For full registration, you already need to have some good wildlife habitat on your property and the clear

intention to manage it for conservation. Alternatively, you may just be beginning to integrate wildlife conservation into your management plan, or to create some new habitat, and so interim registration would be more suitable.

A Land for Wildlife sign is provided free of charge to fully registered property owners to acknowledge the efforts being made for wildlife conservation.

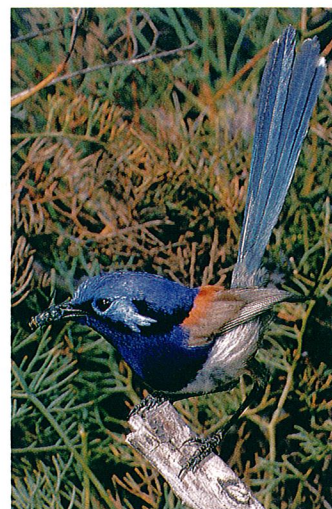
If the property changes ownership, the new owners need to reapply for registration under the scheme.

If you are interested in joining the scheme, we suggest that you apply now, even though there may not yet be a Land for Wildlife Facilitator in your region. We can give you preliminary advice and keep you in touch through the newsletter.

How do I join Land for Wildlife?

Fill in the form provided in this brochure and post it to the 'Land for Wildlife Coordinator' at the address given below. You will be contacted to discuss the scheme.

Join us in protecting native flora and fauna, so it can survive throughout its range. If we all work together to preserve species, this generation will leave to the future a world as rich and diverse as the one we inherited. Every landholder is important!



Natural pest control.

Photo - Babs & Bert Wells/CALM

Land for Wildlife, at a glance:

Free – There are no fees. The scheme recognises the significant contribution made by landholders.

Voluntary – Landholders make a personal commitment to the scheme. They may withdraw at any time, if they wish.

No legal binds – Land for Wildlife status does not alter the legal status of your property in any way. It does not convey the right of public access, nor does it exclude multiple land use over the area.

Inclusive – There is no limitation on size or primary land use. Farms, bush blocks, Shire reserves, roadsides, school grounds or golf courses, all may be eligible.

For further information, or to apply to join the scheme, contact:

Land for Wildlife Coordinator
Wildlife Branch
Department of Conservation and Land Management
Locked Bag 104,
Bentley Delivery Centre,
WA 6983

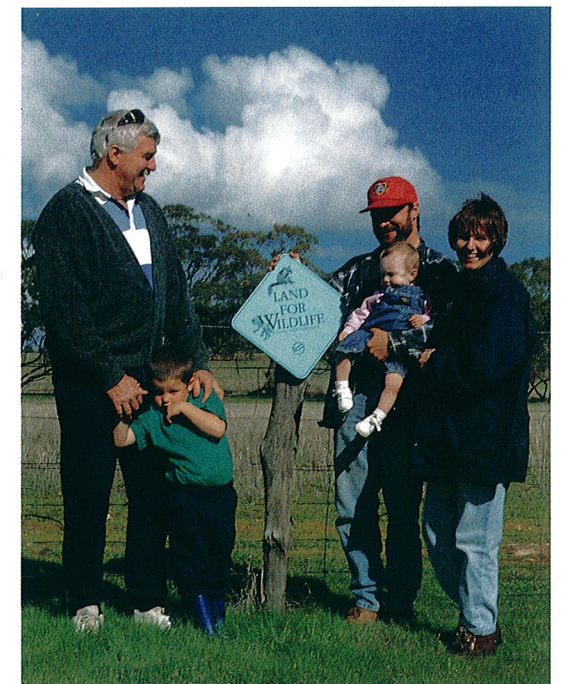
Phone (09) 334 0530
Fax (09) 334 0278

4244-0198-5M

LAND FOR WILDLIFE

VOLUNTARY NATURE CONSERVATION

WESTERN AUSTRALIA



How you can help wildlife on private and community-owned land



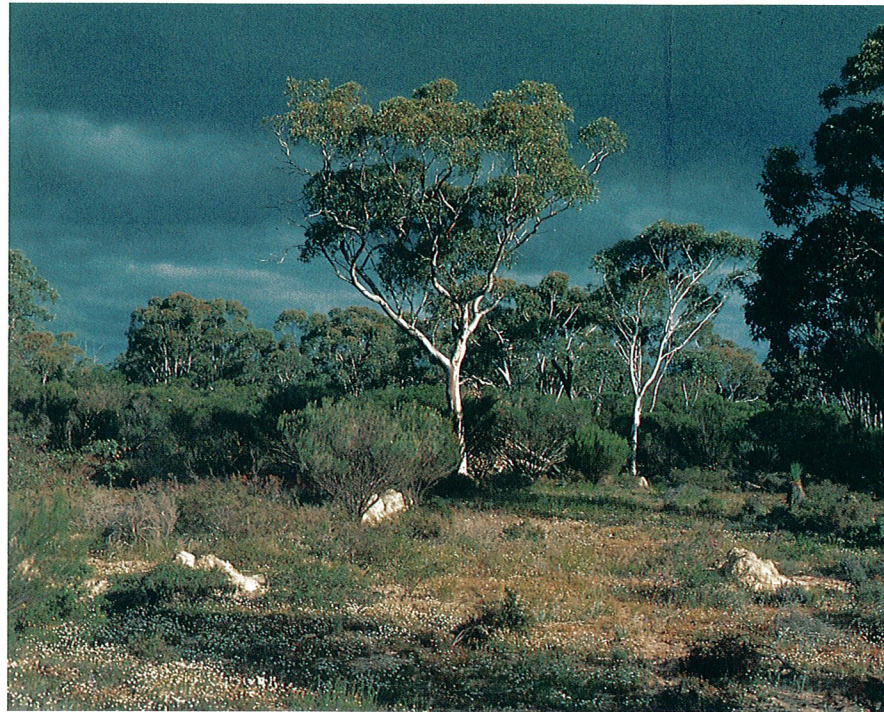
DEPARTMENT OF CONSERVATION AND LAND MANAGEMENT

What is Land for Wildlife?

Land for Wildlife is a voluntary scheme that aims to encourage and assist private landholders in Western Australia to provide habitats for wildlife on their property, even though the property may be managed primarily for other purposes.

If you wish to protect or create wildlife habitats on your property, the Land for Wildlife scheme can offer advice and assistance—whether you manage a farm, a bush block, a Shire reserve or a roadside.

Participation in the scheme is entirely voluntary. Registration with Land for Wildlife will not change the legal status of the property in any way.



Top quality bushland, managed for production of white gum strainer posts and for nature conservation.

What can you do to assist wildlife and also your own property?

Western Australia has changed greatly since European settlement. Where once there was an unbroken expanse of bushland, there is now a mosaic of farmland, towns, industries, roads and railways, with various sized and shaped remnants of native vegetation left among them.

These remnants hold the key to the local survival of many wildlife species. You can help conserve wildlife and, at the same time, protect the production values of your land by managing bush remnants for conservation. You can also increase the conservation value of the local area by creating new wildlife habitats on your property.

Wildlife habitat on private land can:

- contribute to the long-term survival of native plants and animals.
- play a major role in sustainable agriculture. For example, remnant vegetation assists in the control of wind and water erosion, the management of salinity, provision of shade and shelter, and in maintaining natural means of controlling pests.
- provide stepping stones or corridors to link the landscape into a network that allows wildlife movement and genetic interchange between other bushland remnants or conservation reserves.

What are the benefits of joining Land for Wildlife?

Land for Wildlife can offer you advice. Each landholder who applies for Land for Wildlife registration in a facilitated region will be visited—a great opportunity to obtain on-site advice.

Such advice includes:

- how to integrate wildlife habitat with other uses of private land to the benefit of the landholder and wildlife, through farm and catchment planning.
- how to manage remnant bushland and the fauna occurring in the area.
- the ecological role and requirements of native flora and fauna.
- how to include wildlife aspects into revegetation schemes and landcare.
- information about other forms of assistance and incentives that are available.



Encourage local wildlife.

Photo - Babs & Bert Wells/CALM

APPLICATION FORM

LAND FOR WILDLIFE
WESTERN AUSTRALIA

Name: _____

Address: _____

Phone: _____

Fax: _____

Date: _____

I wish to apply for Land for Wildlife registration for my property at: _____

Shire: _____

Postcode: _____

Please tell us where you heard/read about Land for Wildlife.

Please return this form to:
Land for Wildlife Coordinator,
Department of Conservation & Land Management,
Locked Bag 104,
Bentley Delivery Centre,
WA 6983