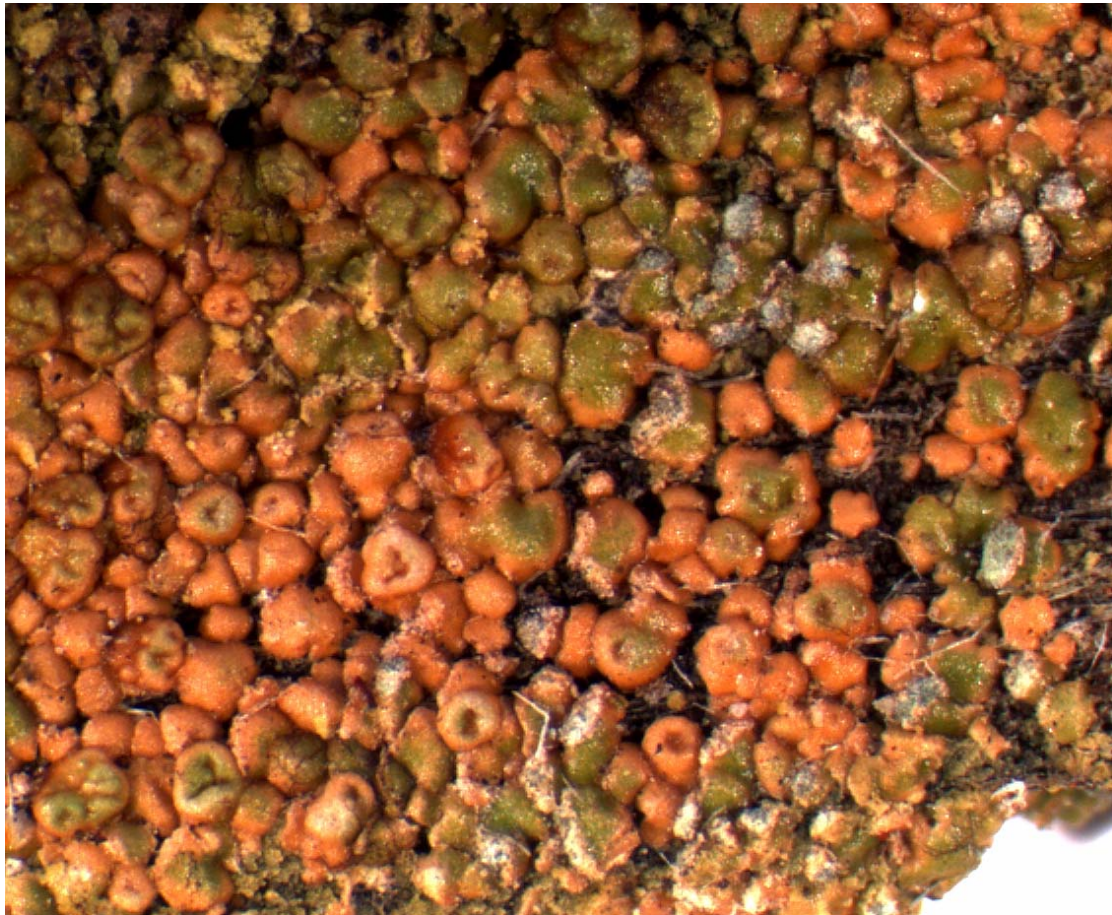


# LIBRARY

Department of Biodiversity,  
Conservation and Attractions

This PDF has been created for digital preservation. It may be used for research but is not suitable for other purposes. It may be superseded by a more current version or just be out-of-date and have no relevance to current situations.

## Cryptogam of the Month March 2012



### *Hypocenomyce foveata*

*Hypocenomyce foveata* a squamulose lichen that is usually located on decaying wood in the shrub layer (31cm to 3m). The squamules although singular appear massed and range from brown to green in colour often with a raised dimpled thallus. Apothecia appear to be rare and when present appear as a flat disc. Testing the squamules with chlorine bleach shows a negative reaction (C-) separating this species from both *H. australis* and *H. scalaris* both of which give a positive reaction (C+).

R.J. Cranfield. Science Division. DEC Manjimup.