

LIBRARY

Department of Biodiversity,
Conservation and Attractions

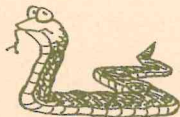
This PDF has been created for digital preservation. It may be used for research but is not suitable for other purposes. It may be superseded by a more current version or just be out-of-date and have no relevance to current situations.

Bookings and Enquiries

First book by phone

Phone The Hills Forest Monday to Thursday between 8.30 am and 3.00 pm on (08) 9295 6149, fax on (08) 9295 3247 or email: wendyha@calm.wa.gov.au.

NOTE: The Catchment Carers' Trail may not include a tour of the C.Y. O'Connor Museum as it will be closed for refurbishment. To check availability of museum tours phone (08) 9295 2455.



Confirmation letter

A confirmation letter with details of your PD day, excursion or activity will then be forwarded to you.

Send your payment

Please make cheques payable to:
Department of Conservation and Land Management
and send to:

Exploring The Hills Forest Programs
CALM, The Hills Forest,
Mundaring Weir Rd.,
MUNDARING WA 6073



Cancellations

Please phone, then confirm your cancellation in writing by fax at least one week prior to your visit.

Find out more

Teachers can find out about all CALM's educational programs in the 'For Schools' section of CALM's NatureBase Internet site at <http://www.calm.wa.gov.au>

Note:

GST charges will apply after 1st July 2000.

Schools should seek advice from the ATO about reclaiming the GST component of curriculum-based excursions.

The Hills Forest Activity Centre is a smoke-free zone



Exploring The Hills Forest

with your primary students in 2000



Exploring The Hills Forest environmental education programs are based in the jarrah forest near Mundaring. They provide many excursion opportunities and classroom resources that support the outcomes-focused approach of all curriculum learning areas.

PAM03642



About CALM

The Department of Conservation and Land Management (CALM) has the task of conserving Western Australia's unique natural heritage for present and future generations.

On behalf of the people of Western Australia, CALM manages a significant portion of the State, including our national parks, State forests, nature reserves, marine parks and timber reserves. It is a large task and one that requires the awareness, understanding and involvement of the wider community.

○ The Hills Forest project

CALM initiated The Hills Forest project to raise awareness and appreciation of the values and management of our forests. It offers visitors of all ages a range of outdoor experiences in the forest environment of Mundaring.



○ Exploring The Hills Forest programs

These programs have been developed for school students as part of The Hills Forest project. They have been written by local educators for local students. Since 1992, more than 50,000 students and teachers have been through our programs and the demand is growing.

What's New?

- Two camps, Be a CALM Nature Conservation Officer for a night, for teachers, expenses paid by CALM.
- Inservicing at your school.
- \$50 reduction on excursion costs for those teachers who attend a PD.
- \$50 reduction on excursion costs for two-class Monday Catchment Carers' Trail bookings.
- Developing a new excursion for Middle Primary—we'll keep you posted.



We now offer activities for every year level. Each program includes an excursion to The Hills Forest, which is guaranteed to be interactive, informative and exciting.

1 Discovering The Hills Forest for Years 6 & 7

This program explores the jarrah forest ecosystem. It fulfils outcome requirements in all learning areas, particularly the core value of Environmental Responsibility. Students learn to lessen their impact on the forest and its resources.

What a teacher had to say about the program:

This excursion and resource package linked perfectly with our work on Primary Investigations and with the First Steps approach to teaching English. Thanks. — Barbara



What's involved:

- **Teacher Professional Development (PD) day in the forest**
This gives teachers an overview of our programs, a resource package and experience of the activities students will encounter during excursions.
- **Pre-visit and post-visit activities at school**
Teachers use the resource package to prepare students for the excursion, and follow up afterwards.
- **Student excursion**
A one-day field trip into the forest led by CALM staff and environmental educators.
- **Student numbers**
Minimum: 25 students per class
- **Cost**
PD day: \$40.00 per teacher (includes lunch and resource package)
Excursion: \$6.00 per student
- **Time**
Excursion: 10 am to 2.00 pm
- **When**
PD days: see dates under Professional Development 2000
Excursions: Weekdays, 1st March to 10th November

2 Catchment Carers' Trail for Years 5, 6 and 7

A learning program about the water cycle, catchments and water resource management run jointly by CALM and the Water Corporation. It leads to investigations in all strands of the Society and Environment learning area, particularly Place and Space, Resources and Natural and Social Systems.

What teachers had to say about the program:

Overall it was a excellent learning experience and covers aspects of Society and Environment, including history, and Science. — Ian

The excursion was worth 20 classroom lessons; very professionally run. — Suzanne

What's involved

- **Teacher and Student Resource Notes**
A booklet of notes will be forwarded to teachers who book the trail excursion. A PD day is recommended.
- **Pre-visit and post-visit activities at school**
Teachers may use the notes to prepare students for the excursion and follow-up.
- **Student excursion**
A one-day field trip that includes:
An interactive walk trail, focusing on issues such as salinity, erosion, nature conservation and the water cycle.
A tour of the Mundaring Weir, its history and use as part of an integrated water system.
Note: The C.Y. O'Connor Museum will be closed for a period during this year.
- **Student numbers**
Minimum: 25 students per class
- **Cost**
Excursion: \$4.50 per student
New opportunity—\$50 voucher for Monday, two-class bookings!
- **Time**
9.45 am to 2.00 pm
- **When**
Weekdays
Terms 1, 2, 3 and Term 4 until 17th November



3 Threatened Species program for Years 5, 6 and 7

Back from the Brink Excursion

A program to raise student awareness of Western Australia's threatened species and current CALM projects aimed at preventing further extinctions. This program fulfils student outcomes required by Society and Environment and Science learning areas and addresses the core value of Environmental Responsibility.



What's involved?

- **Western Shield Action Pack for pre- and post-visit activities**
This Action Pack will be forwarded to teachers who book the excursion. The pack contains teacher notes, resource sheets and activity sheets for classroom work, and suggestions for extension activities that link with the curriculum.
The Action Pack is also available in the 'For Schools' section of CALM's NatureBase Internet site at <http://www.calm.wa.gov.au>
- **Student excursion**
A one-day field trip that includes:
A hands-on session participating in CALM's research methods
A tour of The Hills Forest's animal habitat project
A close encounter with threatened forest animals
- **Student numbers**
Minimum: 25 students per class
- **Cost**
Excursion: \$6.00 per student
- **Time**
10.00 am to 2.00 pm
- **When**
Weekdays

Win!!

A Back from the Brink Excursion

Classes that complete the activities can enter a draw to win one of three excursions to The Hills Forest. They will have a chance to talk to a nature conservation officer, check traps, use scientific methods to monitor animals and meet some threatened species.

What teachers had to say about the program:

The Action Pack, visit to The Hills Forest and the follow-up Powerpoint presentations from the students was the most worthwhile exercise my Year 7 class has done all year. — Vic

What's involved?

- Western Shield Action Pack**
Packs are available free from CALM:
phone (08) 9334 0437 or at a PD day
- Student numbers**
One class of students
- Time for excursion**
10.00 am to 2.00 pm
- When**
November

Country schools

Bunbury and Narrogin areas

Classes in the Bunbury and Narrogin areas that complete the activities in the Action Pack can enter a draw to win an excursion to Wellington Discovery Forest (Bunbury and Collie area) or Dryandra Woodland Ecology Centre (Narrogin).

Enquiries: Tel: (08) 9334 0387 or fax: (08) 9334 0498

4

Forest activities for Years 1 to 7

Year-round excursion activities to suit your needs, focusing on the forest environment, plants, birds, spiders, reptiles and invertebrates. All activities help to instil the value of Environmental Responsibility and the need to maintain the Diversity of Species.



What's involved?

Teachers choose one or more of the activities listed below to make up an excursion day or to enrich a school camp.

Place and Space for Reptiles (Years 4 to 7)

A chance to look for reptiles in the wild and to touch a real live skink, python or lizard at the Centre. Students learn that the care of places provides spaces for a diversity of species.

Duration: 2 hours
Cost: \$3.50 per student
Minimum: 25 students
Maximum: 1 class



Night Life and Living (Years 3 to 7)

Students will recognise the interdependence of life as the forest comes alive after dark. Make this part of your camp at The Hills Forest camp ground.

Duration: 1.5 hours
Cost: \$3.00 per student
Minimum: 25 students
Maximum: 1 class



Spiders—A Diversity of Species (Years 1 to 7)

Students will learn to value our amazing arachnids and the importance of maintaining a diversity of species.

Duration: 1 hour or 2 hours
Cost: \$2.00 (1 hr session) or \$3.00 (2 hr session)
Minimum: 25 students
Maximum: 1 class

5 Busy in the Forest for Early Childhood, Years 1 to 3

○ Investigating the Underworld (Years 1 to 7)

Students will investigate, communicate and participate in a hands-on search of the jarrah forest underworld. They will explore the lives of beetles, bugs, spiders, ants, scorpions, earwigs, mantises and many more.

Duration: 1 hour or 2 hours
Cost: \$2.00 (1 hr session) or \$3.00 (2hr session)
Minimum: 25 students
Maximum: 1 class

○ Earth-friendly Paper (Years 1 to 7)

Students make recycled paper—a hands-on, earth-friendly activity using natural bush products.

Duration: 2 hours
Cost: \$4.00 per student
Minimum: 25 students
Maximum: 1 class



○ Frogs—environmental watchdogs (Years 1 to 7)

Students will discover the value of frogs and then learn where to find them in the forest.

Duration: 2 hours
Cost: \$3.50 per student
Minimum: 25 students
Maximum: 1 class
When: 1st June to 24th September

○ Sense-ational Trail (Years 1 to 7)

Using blindfolds, students explore the forest along our rope-walk, using their senses of smell, touch and hearing.

Duration: 1 hour
Cost: \$2.00 per student
Minimum: 25 students
Maximum: 1 class



A forest excursion that links with CALM's Early Childhood Forest Pack for the classroom. Includes a sensory trail and an opportunity for students to meet some forest creatures.

What teachers had to say about the program:

The most delightful excursion I have ever been on. I will use it every year. — Anna

An outstanding excursion. The pace was just right with a mixture of mystery, fun and exploration. We'll be booking again next year! — Mary

What's involved:

○ Teacher PD day in the forest

Attendance at a PD day is essential. It provides teachers with a forest pack, an overview of the day and a chance to experience excursion activities.

○ Pre-visit and post-visit activities at school

Teachers prepare students for the excursion and follow-up using CALM's Forest Pack, *A Forest is a Very Busy Place*.

○ Student excursion

Activities include a sensory, blindfold rope-walk trail, a 'treasure' trail and an animal encounter session.

○ Student numbers

Minimum: 25 students per class

○ Cost

PD day: \$40.00 per teacher (includes lunch and forest pack)

Excursion: \$6.00 per student

Forest Packs: \$10.00 each, if not attending PD day (to order, phone (08) 9334 0437)

○ Time

10.00 am to 2.00 pm

○ When

PD days: see dates under Professional Development 2000

Excursions: Weekdays, Terms 2 and 3



6 Aboriginal Culture Excursions (ACE) for Years 4 to 7

Join leaders from CALM's Aboriginal Tourism, Education and Training Unit to explore traditional Aboriginal culture in the jarrah forest. Excursion content supports the Education Department's Aboriginal Studies materials.

What teachers had to say about the program:

Fantastic hands-on activities, complemented our class work and the Aboriginal Studies curriculum materials. — Claire

The children learnt the importance of respect for other cultures. Thanks. — David

What's involved

- **Teacher PD day in the forest**
Attendance at a PD day is not compulsory, but it is advisable.
- **Pre-visit and post-visit activities at school**
Teachers prepare students for the excursion and follow-up using the Education Department's Aboriginal Studies materials.
- **Student excursion**
Activities include a forest walk exploring traditional use of plants and animals, stories of the Dreaming, language, and artefact making—all with an emphasis on student participation.
- **Student numbers**
Minimum: 25 students per class
- **Cost**
PD day: \$35.00 per teacher (lunch included)
Excursion: \$8.00 per student
- **Time**
PD day: 9.30 am to 3.00 pm
Excursion: 10.00 am to 2.00 pm
- **When**
PD days: see dates under Professional Development 2000
Excursions: Wednesdays

School Camps in the Forest

Camp under canvas at The Hills Forest Activity Centre or Patens Brook camp sites. Alternatively, stay at the Mundaring Youth Hostel and participate in a number of our educational programs.

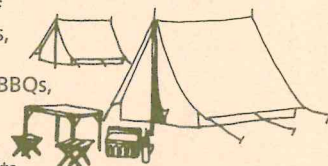
What a teacher had to say about her Year 6 camp:

The variety of hands-on activities led by such capable CALM staff at the Centre, the setting and the facilities made this a very special camp for students, teachers and helping parents. Thank-you. — Sharon

○ The Hills Forest Activity Centre camp ground

Suitable for disabled people

Facilities: 12 shady tent sites, camp kitchen including electric BBQs, hot showers and toilets.



Capacity: one class with adults

Cost: Groups doing Exploring The Hills Forest activities:
\$4.00 per student per night (age 4 to 15 years)
\$8.00 per adult per night (1 free adult for each group of 10 children)
Groups not doing Exploring The Hills Forest activities:
\$6.00 per student per night
\$8.00 per adult per night

○ Patens Brook camp site

No vehicle access. Meet the challenge and walk three kilometres to the secluded camp site carrying all camping gear.

Facilities: Shady camp sites (15 pads), water tank and toilets, 3 fire rings.

Capacity: one large class

Cost: \$3.00 per person per night.

○ Mundaring Youth Hostel

Overlooking the Helena River valley enjoy the comfort and tranquillity of the hostel, one kilometre from The Hills Forest Activity Centre.

Facilities: 36 beds. Capacity for 50, extra mattresses available. Cooking facilities or have your meals prepared for you.

Cost: \$8.00 per student per night, \$17.00 per adult per night (one free adult per group), \$50.00 deposit is required when making your booking.

Professional Development 2000

The Hills Forest PD days are a good way for teachers to familiarise themselves with the range of CALM educational resources and opportunities offered at The Hills Forest. They help teachers make the most of their visit to the forest.

What teachers had to say about the PD:

Your PD early in the year gave me inspiration and invaluable material on which I could plan my teaching. For most of the year I have been able to draw on different CALM resources and activities at The Hills Forest. Thank-you. — Chris

The content was relevant across the board, Years 1 to 7. Thanks for an excellent day. — David (Principal)

NOTE: 'The Discovering The Hills Forest for Years 6 and 7' and 'Busy in the Forest for Early Childhood Students' are offered to those teachers who have attended a PD day. They are advisable, however, for other programs.

○ Provides:

- An overview of excursion opportunities
- Experience of some excursion activities for students
- A review of CALM educational packages and resources
- A tour of the jarrah forest and discussion of forest management with a CALM officer
- Lunch

○ Dates for Exploring The Hills Forest PD

- Term 1: Saturdays 11th March, 1st April
- Term 2: Saturday 10th June
- Term 3: Saturday 22nd July

○ Dates for Aboriginal Culture Excursions (ACE) PD

- Term 1: Saturday 25th March
- School Holidays: Tuesday 11th April

○ Cost

\$40.00 per teacher (\$35 for ACE PD) and \$25.00 per student teacher (includes lunch and relevant resources)

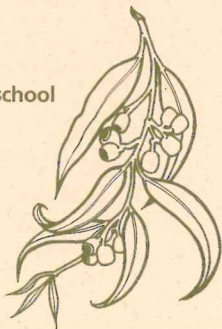
○ Time

- Exploring The Hills Forest PD: 9.00 am to 3.30 pm
- Aboriginal Culture Excursion PD: 9.30 am to 3.00 pm

Principals please note

New Opportunity... Inservicing at your school

We will visit your school during a pupil-free School Development day to give you an overview of our resources and programs.



Whole school staff PD

Available to schools on request. The Hills Forest Activity Centre provides a pleasant environment away from school, where teachers can get to know their colleagues. The day will enrich their teaching programs.

○ Cost

\$35.00 per teacher, minimum of 20 teachers, support staff and interested parents.

Enquire early as School Development and Planning Days are soon booked out.



SPECIAL OPPORTUNITY

Upper Primary and Secondary school teachers

Be a CALM Nature Conservation Officer for a night!

This is an opportunity for teachers to find out about CALM's Western Shield Schools Program and to experience the methods being used to bring wildlife back from the brink of extinction.

For teachers who have not yet used the *Western Shield Action Pack*.



What's involved

○ Provides:

- Hands-on experience of CALM's research monitoring methods—setting and checking traps for forest fauna.
- A chance to meet and question CALM Nature Conservation Officers.
- A close encounter with threatened species.
- Find out how animals are being bred in captivity and rehabilitated into the wild.
- Free Action Pack and other resources for use in school.

○ Cost

All expenses are paid by CALM.
You arrange your own transport to and from Mundaring.

○ Time

4.30 pm to 12 noon next morning.

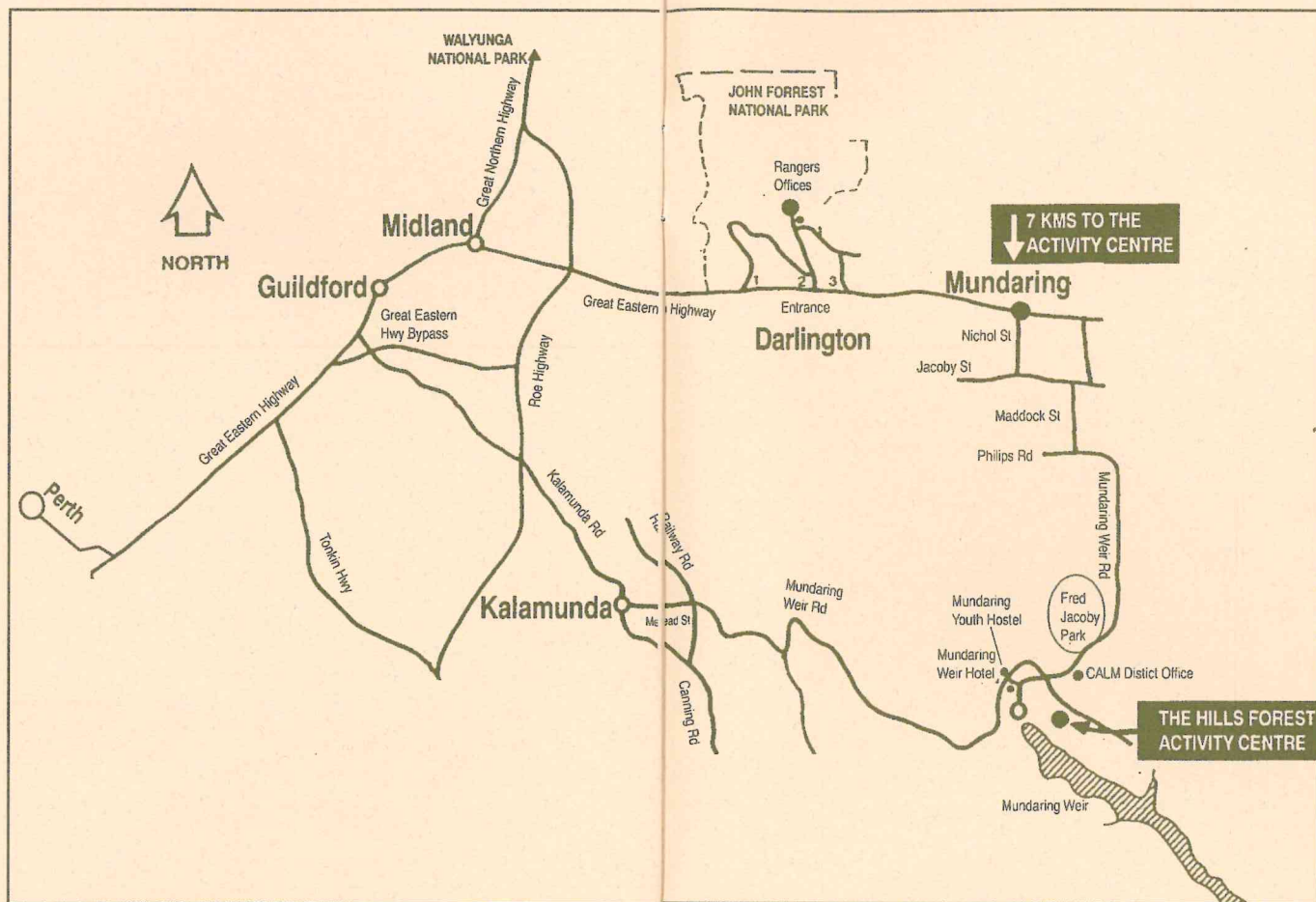
○ When

Friday 23rd June to Saturday 24th June
Friday 11th August to Saturday 12th August

○ Accommodation

Mundaring Youth Hostel

The way to The Hills Forest Activity Centre



Tell me and I'll forget;
show me and I may remember;
involve me and I'll understand.

— Chinese proverb