

LIBRARY

Department of Biodiversity,
Conservation and Attractions

This PDF has been created for digital preservation. It may be used for research but is not suitable for other purposes. It may be superseded by a more current version or just be out-of-date and have no relevance to current situations.



peninsula.

Located 20km north of Bunbury, Leschenault Peninsula Conservation Park offers a relaxing getaway near the beach. Buffalo and Belvidere beaches are easily accessible and are popular for fishing. Belvidere picnic site offers gas barbecues, picnic tables, toilets and an interpretive trail explaining the history of the area. Visitors may bring their caravan or pitch a tent at nearby Belvidere camping area. The John Boyle O'Reilly Memorial offers information, shelters, toilets and a universal access trail. Mosquito repellent is a must when visiting the

Leschenault Peninsula Conservation Park

Located 17km east of Harvey, the dam has a picnic area offering sheltered gas barbecues, tables and toilets with universal access and a lookout. In order to safeguard water quality, water based-activities are not permitted at Stirling Dam or the Harvey River to the north. Dogs are not permitted.

Stirling Dam

This secluded picnic area located on a granite outcrop provides views of the Harvey Dam, surrounding valley and coastal plain. It is renowned for its beautiful wildflowers and offers a relaxing getaway with a walk trail through the surrounding forest, barbecues and tables.

Wildflower Picnic Site

This old mill town offers picnicking, camping, walk trails, toilets and barbecues. The area is situated in the Stirling drinking water catchment and is only open for camping between 1 November and Easter. Dogs are not permitted at Hoffman Mill.

Hoffman Mill

Located 20km south of Collie, the Glen Mervyn Dam is primarily used for waterskiing. Other activities include swimming, fishing and picnicking. Facilities include wood barbecues, picnic tables and toilets.

Dogs and poison baits

The forest is baited with poison baits for the protection of native animals. Please refer to dpaw.wa.gov.au/westernshield for more information.

Domestic pets are not permitted in Wellington National Park, Hoffman Mill or Leschenault Peninsula Conservation Park, with the exception of Buffalo Beach where they must be on a leash.

Vehicles

Unlicensed motorbikes, quad bikes and off-road vehicles are strictly prohibited in all recreation sites in the Wellington District. Penalties apply and are enforced.

Camping fees

Camping fees apply for park visitors for the use of campground facilities. Fees are collected by the ranger with limited concessions applicable. Check the ParkStay website for current details: parkstay.dpaw.wa.gov.au/about-camping/fees.

Campfires

The lighting of campfires in other than designated fire places is **prohibited**. Wood barbecues are provided at most sites. Visitors are reminded that during the summer months there is a total fire ban in place in all locations. Please check conditions daily on signage situated in the recreation site. For your convenience it is a good idea to bring your own portable gas stove or barbecue. Visitors need to be aware that on days of Very High to Catastrophic fire danger, some or all sites may be closed.

Park closures are available at parks.dpaw.wa.gov.au/alerts.

Be clean Put your litter in bins where provided or, better still, take it home with you when you leave.

More information

Department of Parks and Wildlife Wellington District
147 Wittenoom Street COLLIE, PO Box 809 COLLIE 6225
Phone (08) 9735 1988 Fax (08) 9734 4539
Web: dpaw.wa.gov.au

Information current at January 2015.
This information is available in alternative formats on request.



Department of Parks and Wildlife



20140733-0115-5M

Logue Brook Dam (Lake Brockman)

The site has picnic tables, barbecues and a toilet. Located in the forest 15km east of Yarloop, this picnic site offers a relaxing atmosphere set within a beautiful arboretum.

Willowdale

Whittakers Mill offers a relaxing atmosphere for a picnic or rest. The site is less than 100m from the Forrest Highway and is an ideal 'driver reviver' stop. The site offers barbecues, tables and a parking area.

Whittakers Mill

The Wellington District (situated between Bunbury, Donnybrook, Darkan and Waroona) offers an array of recreational pursuits including camping, fishing, swimming, rafting, canoeing, bushwalking and cycling. Enjoy some of the 300 species of varied and colourful wildflowers that grow in the district or see some of the 70 bird species or even one of the many unique animals that are found in the forest, such as the chuditch, quenda, quokka, woylie and brushtail possum.



Wellington District recreation sites



Visitor guide



Department of Parks and Wildlife



RECYCLE Please return unwanted brochures to distribution points

Situated among magnificent jarrah forest this centre offers an educational experience for young and old. Self-guided walk trails through the forest give an insight into the ecology and past management of the jarrah forest. Environmental education activities are offered to school groups and accommodation is available at the Wellington Forest Cottages for those wanting to stay a little longer. The cottages can be contacted on (08) 9728 3043 or for education enquiries, contact *Nearer to Nature* on (08) 9725 4300.

Wellington Discovery Forest

The Quarry, a centre of industrial activity during construction of the Wellington Dam early last century, now serves as a spectacular backdrop to a popular picnic, rock climbing and abseiling site. The Quarry offers sightseeing and information about the dam's construction and history of the area and nearby the café serves light refreshments.

The Quarry/Kiosk

Located on the shores of Wellington Dam, Potters Gorge is a popular camping and picnic area where visitors enjoy fishing, canoeing, boating and bushwalking. There are barbecues, picnic tables, and toilets with universal access.

Potters Gorge

Located along the Collie River downstream of Wellington Dam, Lennard Drive offers picturesque views and a number of sites suitable for swimming, canoeing, white-water rafting, bushwalking and picnicking at the Rapids, Big Rock, Little Rock and Long Pool.

Lennard Drive

Situated on the lower Collie River, this popular camping and picnic area is ideal for a relaxing weekend outing. Activities include swimming, bushwalking, picnicking, canoeing, fishing and camping. Facilities include wood and gas barbecues, picnic tables, universal access toilets and a viewing platform. Camping sites are also at Stones Brook and Gel Coat. Caravans are not permitted.

Honeymoon Pool

This majestic jarrah tree can be found along King Tree Road in Ferguson Valley. The site offers a chance to safely view one of the larger jarrah trees from a boardwalk lookout. For your safety and to protect the old tree's sensitive roots, please stay on the boardwalk at all times.

King Jarrah

Mount Lennard mountain bike trails

Mount Lennard contains 40km of mountain bike trails of varying grades for riders of all levels. The trails weave through mature jarrah forest and provide spectacular views of the lower Collie River valley. A trailhead off Pile Road offers car parking and information.

Crooked Brook

Situated approximately 17km south east of Bunbury, this community-managed site offers a relaxing day-use area. When visiting, you will find a selection of walk trails including a universal access trail, car park, toilets, information shelters and gas barbecues.

Harris Dam

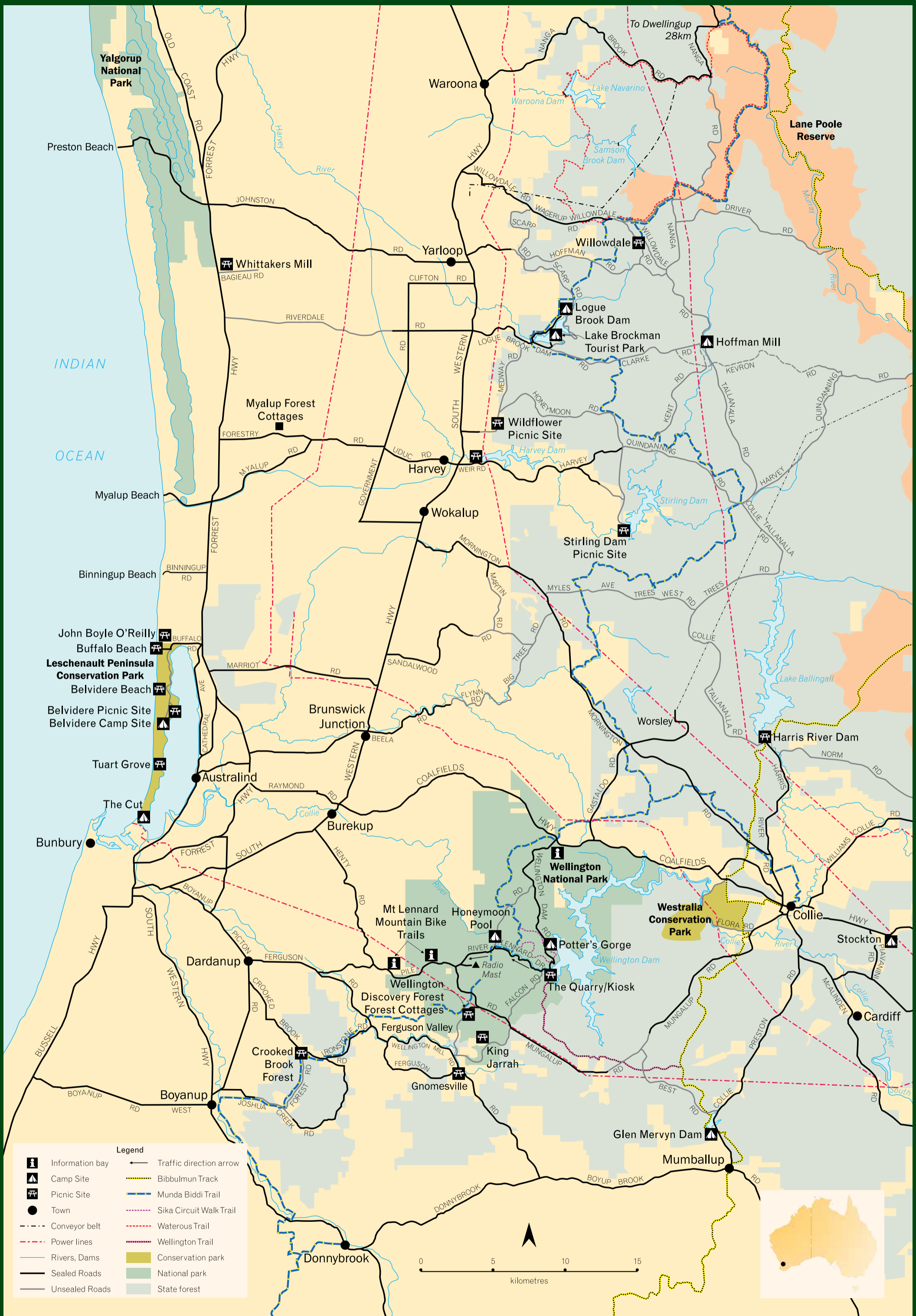
Harris Dam, situated 15km north of Collie, was built on the Harris River in 1990 to provide drinking water to the Great Southern. Although water based-activities are not allowed, there is a grassed picnic area with tables, toilets, gas barbecues and a lookout. This site is managed by the Water Corporation.

Stockton Lake

This former open-cut mine has been rehabilitated as a small lake with bush camping areas and toilets. It provides a popular setting for waterskiing. Due to past mining activities the water is very deep, very cold and mildly acidic which may irritate swimmers' eyes or sensitive skin.

Glen Mervyn Dam

Located 20km south of Collie, the Glen Mervyn Dam is primarily used for waterskiing. Other activities include swimming, fishing and picnicking. Facilities include wood barbecues, picnic tables and toilets.



- Legend**
- Information bay
 - Camp Site
 - Picnic Site
 - Town
 - Conveyor belt
 - Power lines
 - Rivers, Dams
 - Sealed Roads
 - Unsealed Roads
 - Traffic direction arrow
 - Bibbulmun Track
 - Munda Biddi Trail
 - Sika Circuit Walk Trail
 - Waterous Trail
 - Wellington Trail
 - Conservation park
 - National park
 - State forest

