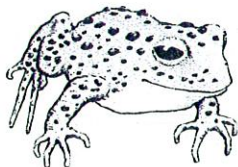


# LIBRARY

Department of Biodiversity,  
Conservation and Attractions

This PDF has been created for digital preservation. It may be used for research but is not suitable for other purposes. It may be superseded by a more current version or just be out-of-date and have no relevance to current situations.



## WHITE-BELLIED FROG

**SCIENTIFIC NAME:** *Geocrinia alba*

**IDENTIFICATION:** This frog has a brown back covered with large raised dark spots. It has a white, or very pale yellow, belly. It has smooth or slightly lumpy skin on its back but a smooth skinned belly. It can grow to 25mm in length.

**HABITAT:** The White-bellied Frog lives in thick vegetation areas along creek lines where springs and seepage keep the area moist all year round. They live in burrows just below the surface.

**STATUS:** Vulnerable. Habitat has been reduced by clearing, grazing and trampling of creekline vegetation by cattle, weed invasion, fire and feral pigs.



## ORANGE-BELLIED FROG

**SCIENTIFIC NAME:** *Geocrinia vitellina*

**IDENTIFICATION:** This frog has a is similar to the White-bellied frog, but its belly is a bright egg-yoke yellow. It also grows to 25mm in length.

**HABITAT:** The Yellow-bellied Frog lives also lives in thick vegetation areas along creek lines where springs and seepage keep the area moist all year round. Most of its current habitat is now conserved in a proposed National Park.

**STATUS:** Endangered. Habitat has also been much reduced by clearing, grazing and trampling of creekline vegetation by cattle, weed invasion, fire and feral pigs.

