

LIBRARY

Department of Biodiversity,
Conservation and Attractions

This PDF has been created for digital preservation. It may be used for research but is not suitable for other purposes. It may be superseded by a more current version or just be out-of-date and have no relevance to current situations.

BE CROCWISE IN CROC COUNTRY



CROCS ARE COMMON: In Kimberley waters you are in 'Croc Country'

CROCS MOVE AROUND: They can be found in any waterway.

CROCS ARE DEADLY: Crocodiles are dangerous and attacks can be fatal.

BE CROCWISE: Don't become complacent. Humans and crocodile populations are higher than ever leading to more frequent encounters.

Swimming, camping, fishing and boating in the Kimberley

1. If in doubt do not swim, canoe or use small boats where crocodiles may live.
2. Always read and obey warning signs. No sign does not mean no crocodile.
3. Avoid the water's edge wherever possible. Children and pets are at particular risk.
4. Crocodiles can remain hidden underwater for long periods - you won't always see them.
5. Camp at least 5m above the high-water mark and at least 50m from the water's edge.
6. Don't paddle, clean fish, prepare food or wash at the water's edge. Do chores at least 50m away.
7. Never dispose of food scraps or fish offal in the water, around campsites or boat ramps.
8. Fish at least 5m back from the water's edge. Don't attempt to retrieve lures.
9. Do not enter water to collect bait with your cast net.
10. Be vigilant when launching or retrieving your boat.
11. When on the water never hang arms, legs or any part of your body out of a boat or lean over the boat's edge.



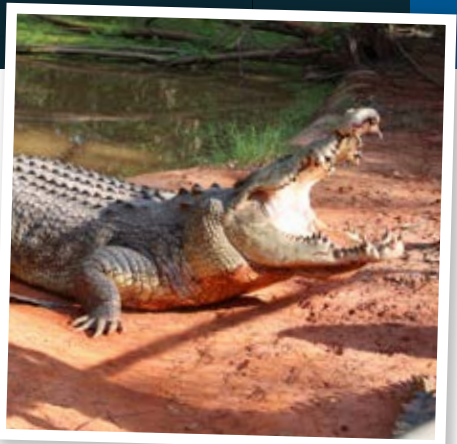
Seen a problem crocodile in and around Broome?

A problem crocodile is one showing signs of aggressive behaviour **OR** is in a Crocodile Control Zone (see map).

Please contact Parks and Wildlife Service Broome office. Phone: (08) 9195 5500

After hours or on the weekend: follow the prompts to our after-hours service.

Information current at October 2018
This information is available in alternative formats on request.



Department of Biodiversity,
Conservation and Attractions



BE CROCWISE 