

# LIBRARY

Department of Biodiversity,  
Conservation and Attractions

This PDF has been created for digital preservation. It may be used for research but is not suitable for other purposes. It may be superseded by a more current version or just be out-of-date and have no relevance to current situations.



The park has a number of magnificent island nature reserves that are important breeding areas for seabirds including fairy terns and osprey. Also inhabiting the islands are the endangered darters, a nocturnal mouse marsupial. Jurien Bay Marine Park contains the only breeding area for Australian sea lions on the west coast of Australia. This isolated sub-population of 800 individuals is genetically distinct and represents only a fraction of the numbers that existed pre-European settlement. Australian sea lions are the rarest in the world and female sea lions will only return to breed on the island of their birth.

The park was declared in 2003 and is representative of a temperate reef existing at its northern most limits. The influence of the southern flowing Leeuwin current on these reefs can be seen in the existence of tropical corals within areas of seagrass and stands of cool water macro-algae. The reef is a marine enthusiast's delight with caves, grottos, and overhangs covered in multi-coloured sponges, sea squirts, sea fans, and anemones. Schools of buffalo bream, western pomfrets and wrasse can be seen swimming with

## Jurien Bay Marine Park

The park is unique world-wide for the extensive limestone reef system that runs parallel to this section of the Western Australian coastline. The park extends from Wedge to Greenhead and 5.5 km offshore. The marine waters encompass numerous island nature reserves and important seagrass meadows critical for the survival of many marine and terrestrial plants and animals.



**More information**  
**Department of Biodiversity, Conservation and Attractions**  
 Moora District Office  
 67 Bashford Street  
 Jurien Bay 6516  
 For general enquiries  
 Ph (08) 9688 6000  
[www.dbca.wa.gov.au](http://www.dbca.wa.gov.au)  
**Department of Primary Industries and Regional Development**  
 Jurien Bay District Office  
 Harbour Office Complex, Jurien Harbour  
 Jurien Bay 6516  
 Ph (08) 9652 1048  
 F (08) 9652 1408  
[www.fish.wa.gov.au](http://www.fish.wa.gov.au)  
**Shire of Dandaragan**  
 Bashford Street  
 Jurien Bay 6516  
 Ph (08) 9652 1048

2019\_750 1119 3M



## Visitor guide

**Jurien Bay Sea Rescue (VMR661)**  
 Ph (08) 9652 1950  
 27 MHz Ch 91 – Working and calling frequency  
 Ch 88 – Emergency calling  
 VHF Ch 21 – Working and calling frequency  
 Ch 16 – Emergency calling  
 HF 4125 KHz – Working and emergency calling



Department of Biodiversity, Conservation and Attractions  
 Department of Primary Industries and Regional Development

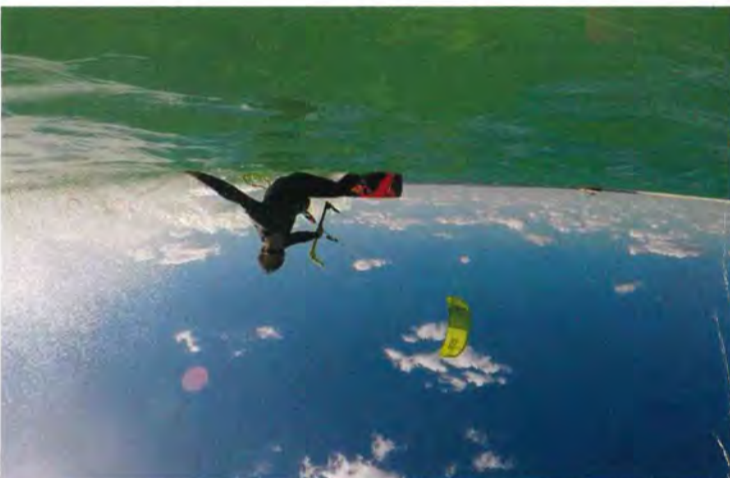


Department of Biodiversity, Conservation and Attractions  
 Department of Primary Industries and Regional Development

**RECYCLE** Please return unwanted brochures to distribution points

## Enjoying the marine park

Jurien Bay is popular for a wide range of recreational activities. Surfing, windsurfing and kiteboarding are all popular throughout the park. For those keen to get under the water there are many spots to both scuba dive and snorkel. Some excellent sites are described in the book titled *More Dive and Snorkel Sites in Western Australia*. Fishing, both in-shore and off-shore, is highly productive with a wide range of fish to target including Dhufish, snapper, baldchin grouper and whiting. A healthy future for recreational fish in Jurien Bay Marine Park depends on anglers supporting fishing regulations and respecting marine park zoning. Check with Department of Primary Industries and Regional Development to find out about bag limits and other fishing regulations, or refer to the department's website to download the statewide *Recreational Fishing Guide*



## Protecting WA's marine environment

Western Australia's marine areas are globally significant. Its coastal waters are considered to be among the least disturbed in the world.

The Western Australian coast boasts a large area of biogeographic overlap, between the tropical north (north of the Ningaloo Marine Park) and the temperate south (east of Cape Leeuwin), where tropical and temperate species co-exist. The Indian Ocean is also the only ocean in the world that has an eastern boundary current (the Leeuwin Current) that transports warmer waters from the Equator to the southern coast of a continent.

Our coastal waters are valued by Western Australians. The wide range of environmental, cultural, commercial and recreational values they offer generate employment and revenue and provide people with a source of pleasure and recreation.

The conservation and sustainable use of WA's marine environment is everyone's responsibility. By working together to reduce human impacts on the marine environment and fishing within sustainable limits we can pass it onto future generations in a similar condition to what it is today.

We need marine parks for the same reasons we already have national parks on land. They protect our precious plants and animals, above and below the waterline.



## Zoning in the marine park

Know your zones:

**Sanctuary zones** are look but don't take areas and provide the highest level of protection for marine habitat and wildlife. Non-extractive activities are permitted including boating, swimming, snorkelling, scuba diving and nature appreciation. Fishing is not permitted in sanctuary zones.

**General use zones** make up most of the park and allows for a range of commercial and recreational activities such as boating, fishing, aquaculture, kite and windsurfing, kayaking, diving and snorkelling.

**Special purpose zones** protect specific features or habitats. There are four types in the park including;

*Scientific reference* provide large areas where natural processes can be studied relatively free from human influence.

*Shore-based activities* provide areas where beach fishing is the priority.

*Puerulus monitoring* provides for the monitoring of rock lobster larvae.

*Aquaculture* provides area for aquaculture farming.

## Zone markers

Most zones are identified by yellow bouys on-water that extend 1m above sea level and on-land yellow reflective markers. The makers can be used as a guide to line up a zone boundary. When fishing, particularly when further offshore, the best method of determining your position in relation to the nearest zone boundary is by using a GPS device or the marine park app.



## Fishing activities

The Jurien Bay Marine Park is a popular fishing destination for both residents and visitors. Please refer to the map and the permitted use table to see where you can fish. For recreational fishing; please observe the following rules;

### Line fishing

- From the shore is permitted everywhere except sanctuary zones
- From a boat is permitted in general use, puerulus monitoring and aquaculture zones

### Rock lobster

- From the shore is permitted in general use, shore-based activities, aquaculture and scientific reference zones
- From a boat is permitted in general use, aquaculture and scientific reference zones

### Netting

- From the shore is permitted in general use, shore-based activities and scientific reference zones
- From a boat is not permitted

### Crabbing, Spearfishing and Octopus

- From the shore or boat is permitted in general use and aquaculture zones.

## Caring for the marine environment

- Know the marine park zones and permitted activities in the area you plan to visit.
- Fish for the future. Observe size, bag and possession limits.
- Anchor in the sand to avoid damaging fragile reef and seagrass areas
- Quickly return undersize and unwanted fish to the water. Use wet hands or wet cloth when handling fish and avoid placing on hot, dry surfaces.
- Dispose of litter thoughtfully, especially plastics and fishing line.
- A minimum distance of 10m must be maintained from sea lions on land and in the water. They are wild animals

able to injure people and are particularly unpredictable during breeding season. They have been known to bite and there is the potential to transfer diseases such as Tuberculosis.

- Stay at least 100m from whales. Please refer to the Parks and Wildlife service whale watching brochure to ensure safe and memorable whale watching.
- All offshore rocks and islands within the marine park are nature reserves and pets are not permitted. Access to all islands is prohibited except for day access to the beaches on the following islands; Favorite, Boullanger, Whitlock, Escape, North Cervantes, South Cervantes, North Green, South Green and Wedge Island.
- Keep a look out for sea lions, turtles and dolphins when boating to avoid boat strikes.
- If you find an injured, stranded or sick animal please call the 24 hour Wildcare Helpline on (08) 9474 9055.



## Marine Park App

The app provides the best possible information on park zones and permitted activities. Importantly, all the data is downloaded to your phone, allowing people to access park information at any time.

For example, the app has a 'where am I?' function so park users can see which marine park zone they are in and what activities they can enjoy in each particular area, even when offline or out of mobile phone range.

The app shows how to contact each park, how to get there and how to stay safe during visits. Information about the wildlife you are likely to encounter while visiting is included to make your trip more memorable.

Download on the  
App Store

GET IT ON  
Google Play



# JURIEN BAY MARINE PARK

RECREATION GUIDE	ACTIVITIES ✓ = Permitted X = Not permitted	SANCTUARY ZONE	SPECIAL PURPOSE ZONE				GENERAL USE ZONE
			puerulus monitoring	scientific reference	shore-based activities <sup>4</sup>	aquaculture	
Fishing from guided charter vessels	X	X	X	X	X	✓	✓
Line fishing — from boat <sup>2</sup>	X	X	✓	X	X	✓	✓
Line fishing — from shore	X	X	✓	✓	✓	✓	✓
Rock lobster fishing <sup>2,3,4</sup>	X	X	X	✓	✓	✓	✓
Abalone fishing — from boat <sup>2,3,4</sup>	X	X	X	X	X	✓	✓
Abalone fishing — from shore <sup>3,4</sup>	X	X	X	✓	✓	✓	✓
Crabbing <sup>2</sup>	X	X	X	X	X	✓	✓
Netting (haul and throw only) <sup>5</sup>	X	X	X	(shore-based only)	✓	✓	✓
Spearfishing <sup>2</sup>	X	X	X	X	X	✓	✓
Shell collecting <sup>6</sup>	X	X	X	X	X	✓	✓
Other fishing activities (eg. octopus)	X	X	X	X	X	✓	✓
Diving, snorkelling, swimming	✓	✓	✓	✓	✓	✓	✓
Boating, yachting and non-motorised water sports <sup>7</sup>	✓	✓	✓	✓	✓	✓	✓
Surface water sports	✓	✓	✓	✓	✓	✓	✓
Wildlife interaction <sup>8</sup>	✓	✓	✓	✓	✓	✓	✓
Wildlife feeding	X	X	X	X	X	X	X

- This table is for recreational activities only. For information on permissible commercial activities contact the numbers below or refer to Jurien Bay Marine Park Management Plan available at [www.dbca.wa.gov.au](http://www.dbca.wa.gov.au)
- A fishing licence is required for fishing from powered boats. Recreational fishing rules apply including bag and size limits, species and gear restrictions. For further details visit [www.fish.wa.gov.au](http://www.fish.wa.gov.au)
- A fishing licence is required and seasonal closures apply. For further details visit [www.fish.wa.gov.au](http://www.fish.wa.gov.au)
- Fishing for any species while, diving, snorkelling or involving the use of a boat is not permitted in shore-based activities zone.
- A fishing licence is required for the use of all nets. Set netting is not permitted within the Jurien Bay Marine Park. For further details refer to the Recreational Net Fishing Guide available at [www.fish.wa.gov.au](http://www.fish.wa.gov.au)
- Shell collecting (dead or alive) restrictions apply. The take of coral, live rock and/or totally protected species is prohibited. For further details visit [www.fish.wa.gov.au](http://www.fish.wa.gov.au)
- For further boating details contact the Department of Transport.
- Subject to the Conservation and Land Management Act 1984 and Wildlife Conservation Act 1950.

Department of Biodiversity, Conservation and Attractions (DBCA) - Parks and Wildlife Service  
Jurien Bay - (08) 9688 6000

Department of Transport (DoT)  
Geraldton - (08) 9956 0111

Department of Primary Industries and Regional Development (DPIRD) - Fisheries  
Jurien Bay - (08) 9652 1048

# Jurien Bay Marine

- Marine Park boundary
- Sanctuary zone
- Special purpose zone (puerulus monitoring)
- Special purpose zone (scientific reference)
- Special purpose zone (shore-based activities)
- Special purpose zone (aquaculture)
- General use zone
- HWM



Department of Biodiversity, Conservation and Attractions  
Department of Primary Industries and Regional Development



Scan the QR code for more information  
Jurien Bay Marine Park  
<https://parks.dpaw.wa.gov.au>  
Download the free app available on Google Play

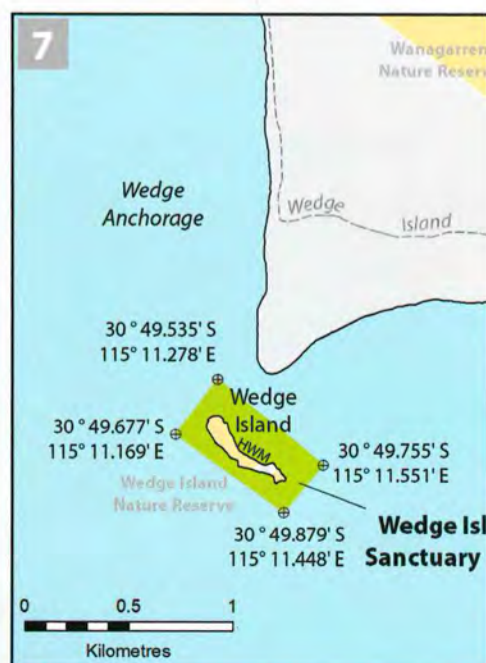
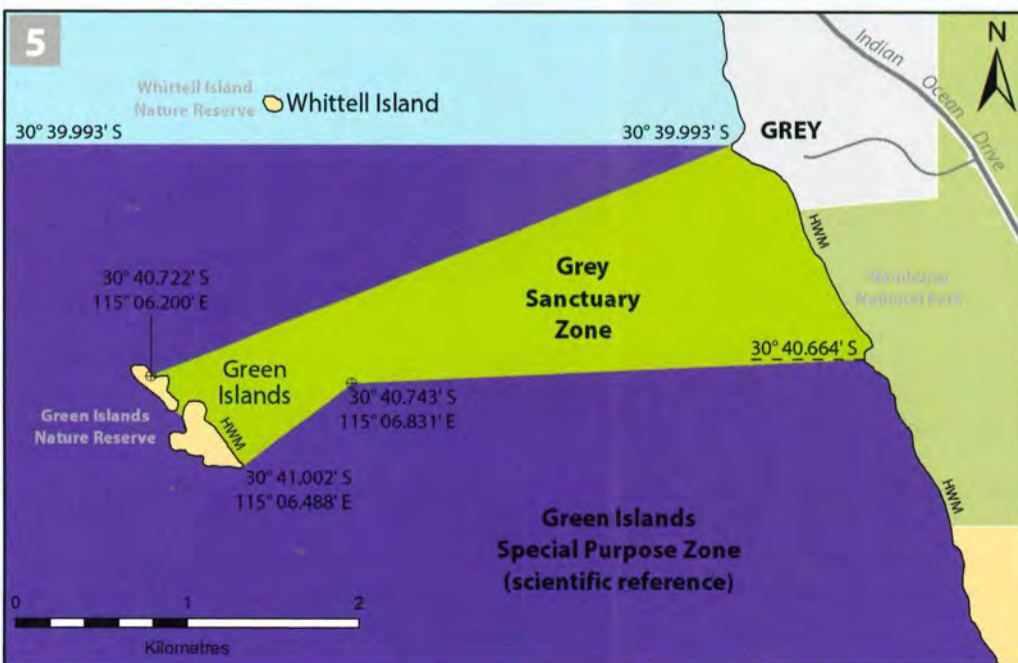
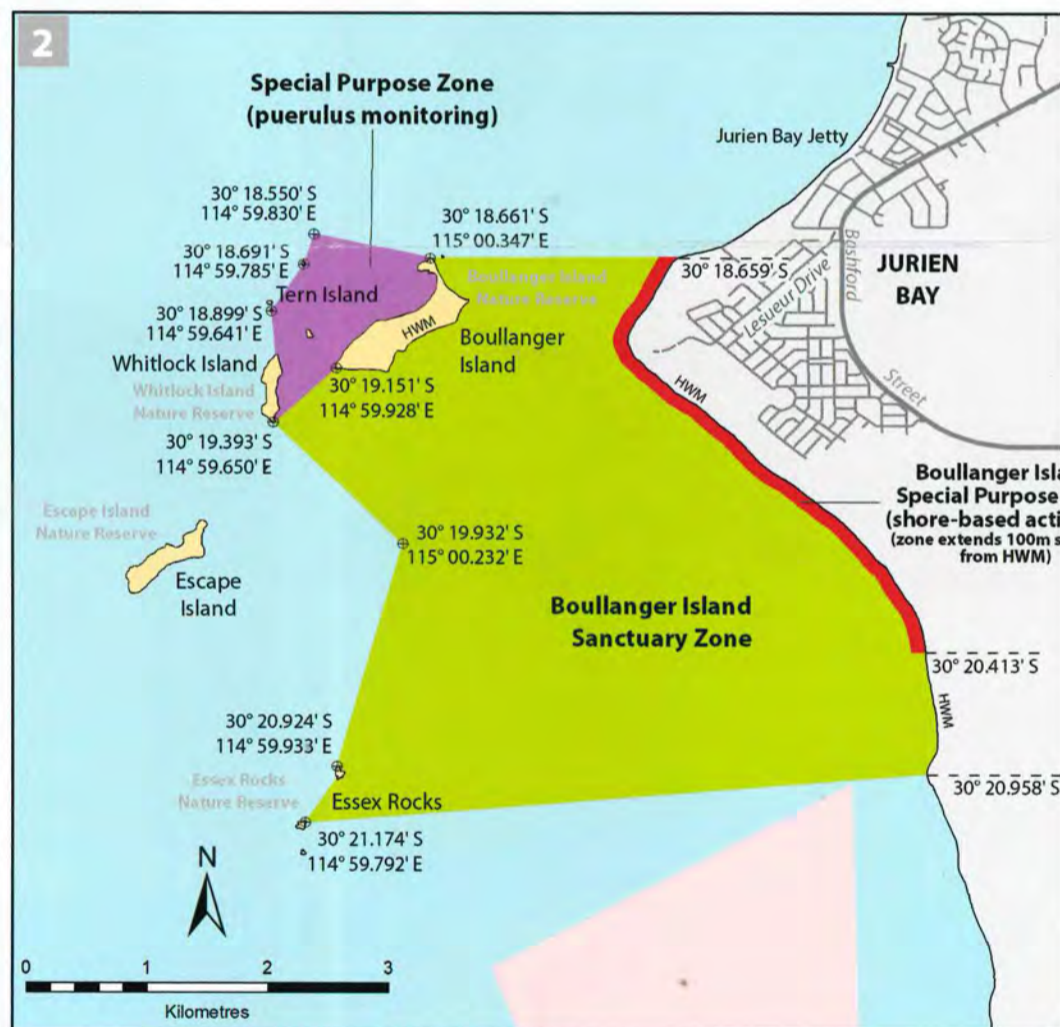
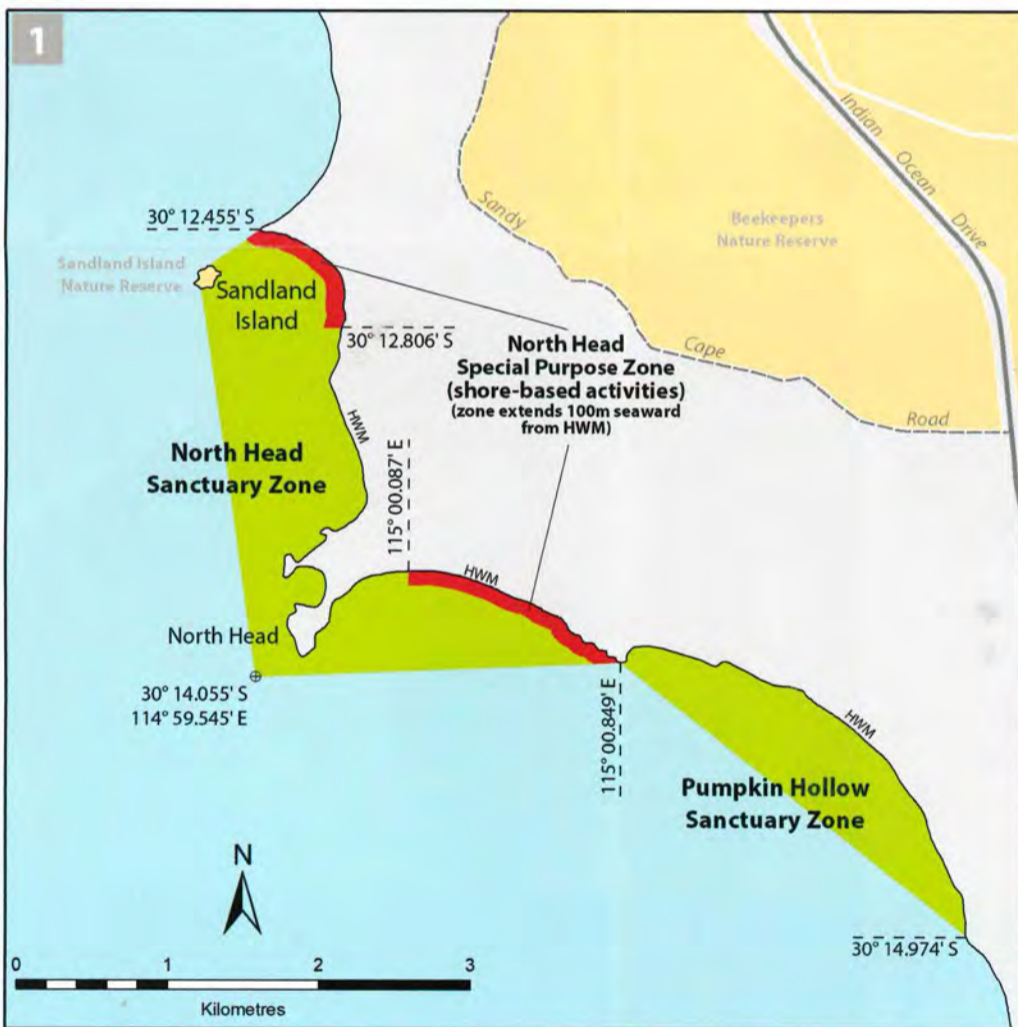
Produced by Department of Biodiversity, Conservation and Attractions, Perth

## Sea lions - take care

Australian sea lions are rare and protected. They can be found in the Jurien Bay Marine Park. Sea lions are attractive and interesting creatures. They fish and swim in nearby waters. Sea lions are attracted to and interested in people's food. If you are aggravated, for your safety and the protection of this species, you are recommended to move away from sea lions at all times. If a sea lion approaches you in the water, move away from the water until the sea lion has swum away.

## Island access within Jurien Bay Marine Park

Islands and rock outcrops within the marine park provide important habitats for many species. Islands and rock outcrops within the marine park are nature reserves and access to the intertidal beaches on Favorite, Boullanger, Whitlock, Escape, north Green, south Green and Wedge islands.



# Park

- Boat ramp
- National Park
- Nature Reserve
- Conservation Park
- High water mark

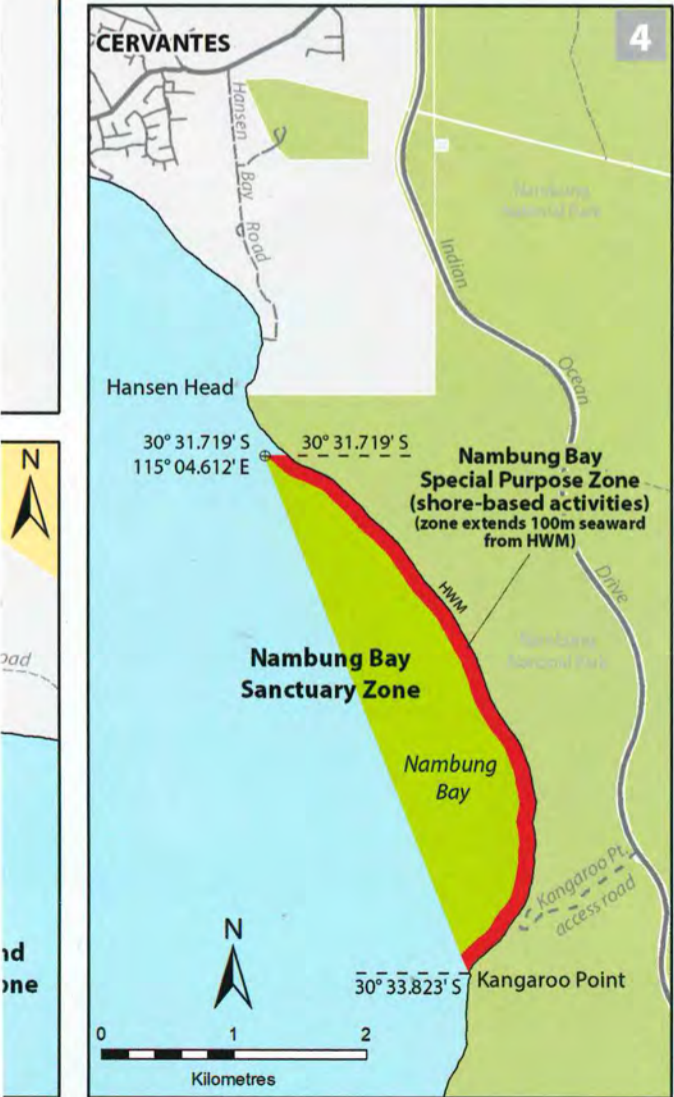
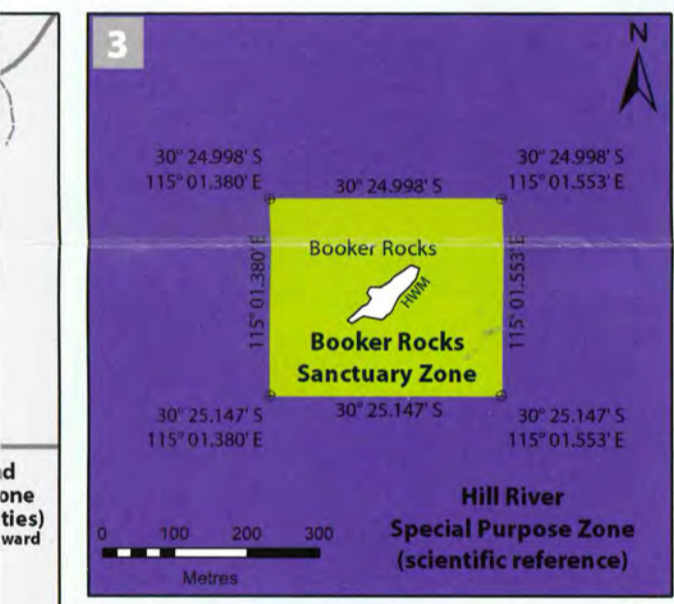
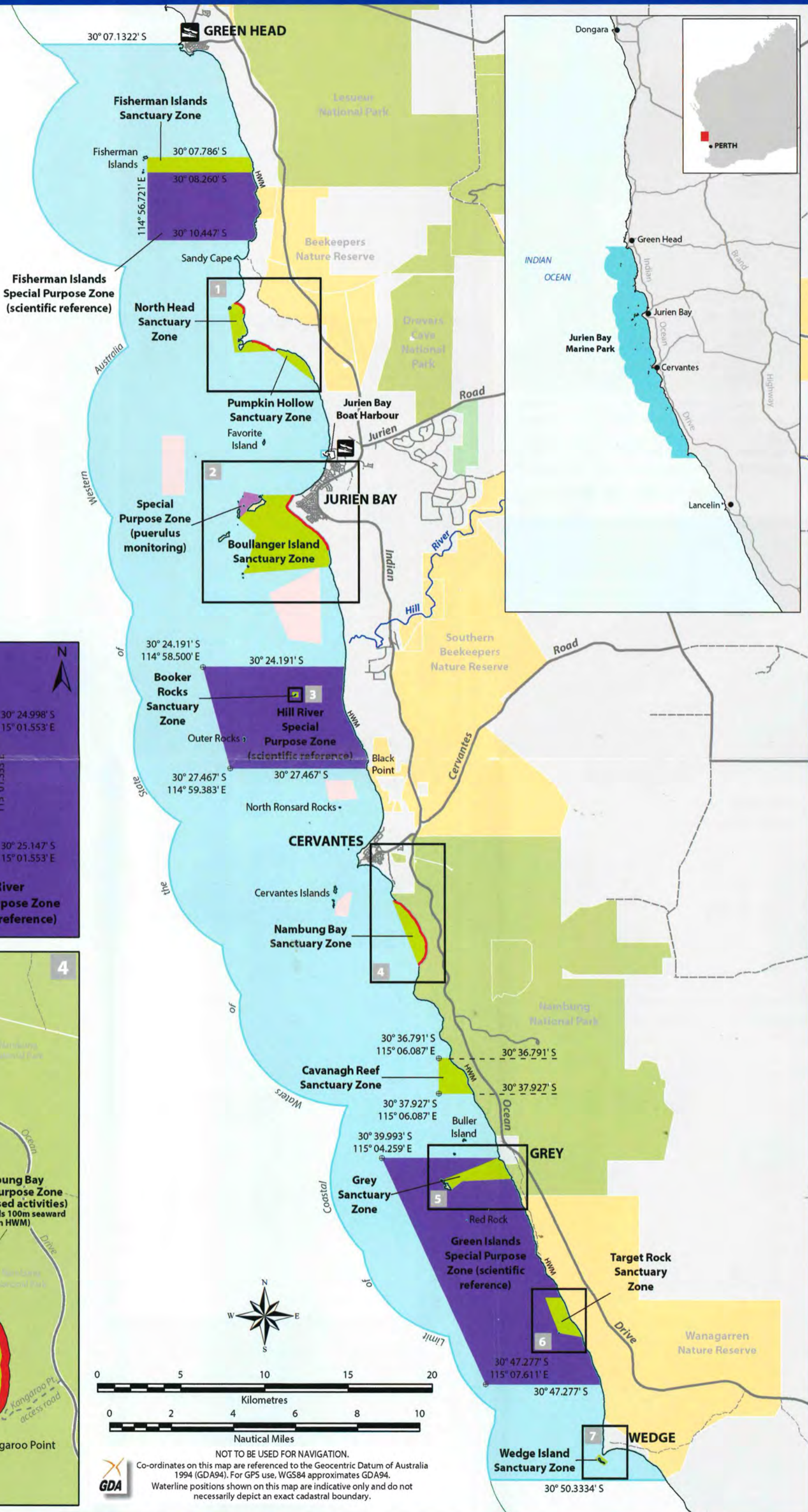
QR code for information about Marine Park [gov.au/park/jurien-bay](http://gov.au/park/jurien-bay)

Marine Parks WA app available through the App Store

Marine and Wildlife Service (Planning Branch) 12 June 2018

Marine Park year round and features but can deliver a nasty rip. Please be prepared to keep at least 10m away from the park or remove yourself from the area.

Seabirds and other wildlife. All fishing is prohibited except for day fishing at Cervantes, south Cervantes, and Nambung Bay.



and one