

LIBRARY

Department of Biodiversity,
Conservation and Attractions

This PDF has been created for digital preservation. It may be used for research but is not suitable for other purposes. It may be superseded by a more current version or just be out-of-date and have no relevance to current situations.



To do

Aboriginal Cultural Experience (D6)

Enjoy an entertaining and informative 45-minute session that will immerse you in local Noongar culture. Learn about the world's oldest living culture, experience didgeridoo playing and find out about the cultural significance of plants and animals.

Tours run Sundays and public holidays. Please check times with McNess House Visitor Centre.

Crystal Cave tours (E11)

See Perth's only tourist cave on a 45-minute guided tour and experience an underground wonderland full of natural cave decorations such as stalactites, stalagmites, helictites, columns and shawls. The cave's constant temperature makes this tour a comfortable all-year-round experience.

Tours run daily. Please check times with McNess House Visitor Centre or book online at exploreparks.dbca.wa.gov.au/park/yancheppinn

Camping

Camp under the stars at Henry White Campground, nestled among tuart and banksia woodlands. The campground has campsites suitable for tents, caravans and campervans.

Bookings available online only, visit parkstay.dbca.wa.gov.au for pricing, availability and facilities.

Yanchep National Park



Visitor guide



RECYCLE Please return unwanted brochures to distribution points.



More information

Yanchep National Park is open every day of the year.

McNess House Visitor Centre (D6)

Drop into the visitor centre to get information about the park, book your tours and browse through the great range of gifts and souvenirs. You can also purchase an annual park pass.

Yanchep National Park

Parks and Wildlife Service

Department of Biodiversity, Conservation and Attractions

Cnr Indian Ocean Drive and Yanchep Beach Road

Yanchep, Western Australia 6035

Phone: (08) 9303 7759

Email: yanchepp@dbca.wa.gov.au

Web: dbca.wa.gov.au

Find us on Facebook at [facebook.com/waparkswildlife](https://www.facebook.com/waparkswildlife)



The 'Top Trail' icon identifies the top trails experiences in WA – find out more at trailswa.com.au.

Police: **13 14 44**

In the event of an emergency, call 000. Make your way to a safe area as indicated by the cream colour on the map. If you are on a tour, listen to your guide's instructions. For bushfire alerts and warnings, visit emergency.wa.gov.au or listen to ABC Radio.

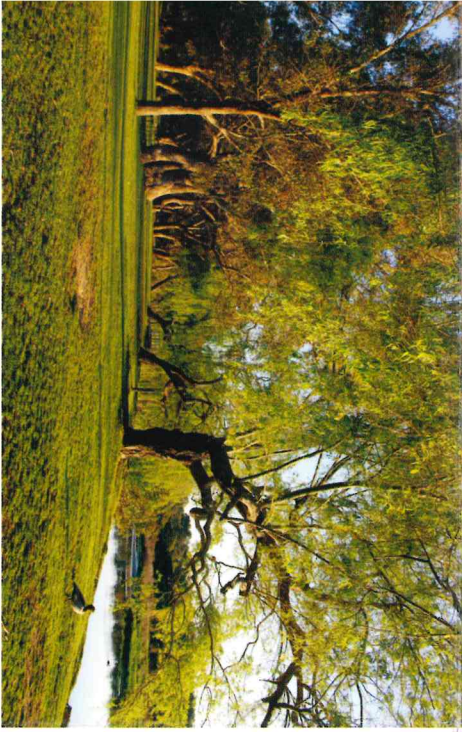
Download the free Emergency+ app before your visit which can be used in the event of any emergency to call for assistance. If there is no mobile phone coverage you WILL NOT be able to call 000 but the app will provide you with GPS location details.



Front cover Koalas at Yanchep National Park. Photos – DBCA

Information current as at March 2020.

This document is available in alternative formats on request.



To eat

Picnic spots galore

All barbecues in the park are free. Please follow the instructions carefully and remember to reignite as required. You will see many birds while you are picnicking but please don't feed them.

Yanchep Inn (C6)

Open daily from 8am till late, the historic Yanchep Inn offers breakfast, lunch, dinner, drinks and accommodation. Function facilities are also available. For more information and bookings call (08) 9561 1001 or visit yancheppinn.com.au

Chocolate Drops Tearooms (D6)

Drop in for a light lunch, refreshment or ice-cream and treat yourself to some award-winning handmade chocolate. For more information call (08) 9561 6699 or visit chocolatedrops.com.au

Special occasions

Cabaret Cave (A9)

Book your special occasion at Perth's only purpose-modified function cave for hire. This natural cave is visually amazing, acoustically sensational and naturally air-conditioned.

For more information and bookings call (08) 9561 1001 or visit yancheppinn.com.au



To see

Spot the western grey kangaroo

Yanchep National Park is home to western grey kangaroos (*Macropus fuliginosus*), which can be seen in abundance early and late in the day.

Visit the koalas (D6)

Stroll along the 240m koala boardwalk to view one of Australia's favourite native animals in a natural environment. Meet park staff on the boardwalk at 3.15pm daily for a 15-minute koala talk (subject to guide availability).

Enjoy the amazing birdlife

Yanchep National Park is alive with many species of wetland and bushland birds. Check with McNess Visitor Centre for a list of birds you are likely to see while enjoying the scenery.

Flora

The park is home to a diverse range of flora including paperbark, banksia, tuart, jarrah and sheoak. From August to October, the park comes to life with a stunning array of colourful wildflowers such as kangaroo paw, Yanchep rose, wattles and native orchids. Check with McNess Visitor Centre for the best seasonal viewing spots.



Walk trails

The park has nine walk trails ranging from 500m to 52km. Each trail has been selected to showcase the unique biodiversity of the northern Swan Coastal Plain.

Information about extended walk trails is available on a separate brochure, **Yanchep National Park – Extended walks**. Pick up a copy at McNess House Visitor Centre or online at exploreparks.doc.wa.gov.au/yanchep

Please ensure you take adequate drinking water on all walk trails.

Trails in this guide have been purpose-built for walkers only. Motorcycles and mountain bikes are not permitted.

Trail grading

Parks and Wildlife Service walk trails are assigned a 'class' to indicate degree of difficulty.

CLASS 1
No bushwalking experience required. Flat even surface with no steps or steep sections. Suitable for wheelchair users who have someone to assist them. Walks no greater than 5km.

CLASS 2
These walks are well defined with some steps and generally gradients are gentle.

CLASS 3
These trails are defined and may include steps; loose surfaces; uneven ground; and short, steep sections.

1 DWERTIA MIA WALK TRAIL

Grade: Class 1
Length: 2.1km **Time:** 45min return
Start/finish: McNess House Visitor Centre
*can also be accessed from the Boomerang Gorge car park reducing the length of trail to 500m.



Meander through the old cave system at Boomerang Gorge. This trail is an 'all access' trail and features interpretive signage providing visitors with a better understanding of how the limestone environment has formed over hundreds of thousands of years and also looks at how the park's caves and their formations have been shaped through the ages by the flow of water.

2 WETLANDS WALK TRAIL

Grade: Class 2
Length: 2.7km **Time:** 50min return
Start/finish: McNess House Visitor Centre



Follow this popular trail that weaves its way around Loch McNess, one of Perth's most important coastal wetlands. Take in the natural sights and sounds that surround you and see the yanget (bullrush) used by local Noongar people for food.

3 WOODLANDS WALK TRAIL

Grade: Class 2
Length: 2.6km **Time:** 1hr return
Start/finish: McNess House Visitor Centre



Despite the sandy soils, these coastal woodlands support a diverse range of trees including banksia, tuart, marri, stunted jarrah, sheoak and small pockets of paperbark. During spring, many native flora species including kangaroo paws and catspaws are in flower.

4 CAVES WALK TRAIL

Grade: Class 3
Length: 4.5km return **Time:** 2hr return
Start/finish: McNess House Visitor Centre



This trail takes you past Crystal Cave where you can discover how limestone caves are formed and hear about their colourful history on a guided tour. Tours can be booked at the McNess House Visitor Centre before you start your walk.

