

LIBRARY

Department of Biodiversity,
Conservation and Attractions

This PDF has been created for digital preservation. It may be used for research but is not suitable for other purposes. It may be superseded by a more current version or just be out-of-date and have no relevance to current situations.



Christmas tree (*Nuytsia floribunda*)

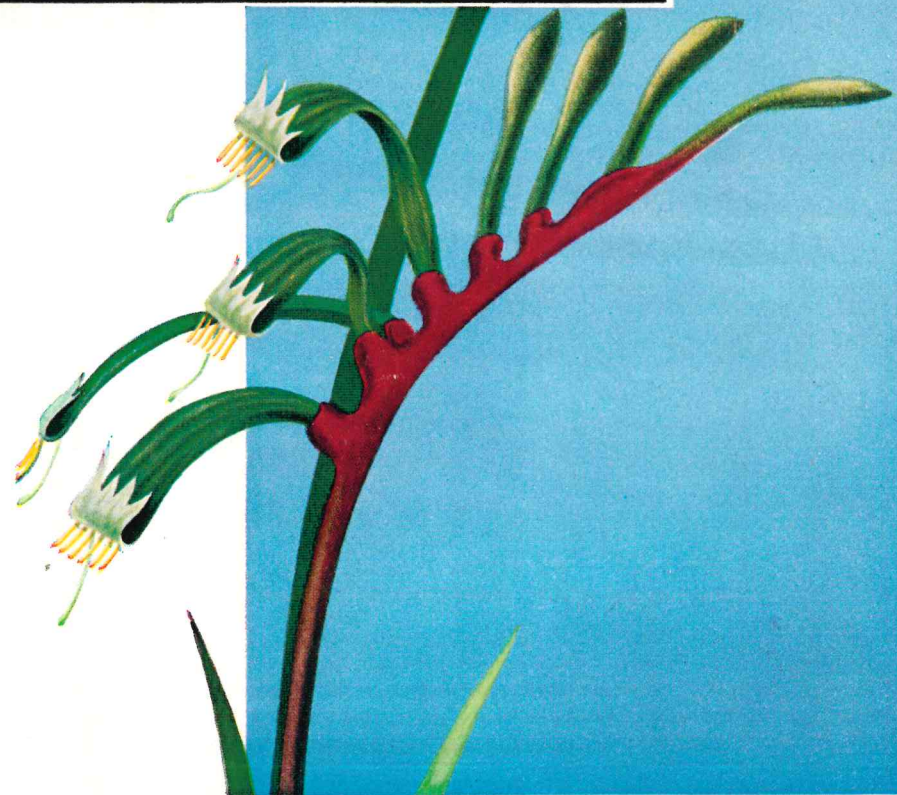
Issued by . . . The Western Australian Tourist Development
Authority

772 Hay Street, Perth, W.A.

PAM04621

MS (94)
WES 582.5(941)

FORESTS AND
Flowers



OF
WESTERN AUSTRALIA

Seedlings

Potted seedlings are obtainable from nurserymen, amongst whom are :—

Gumleaf Nursery, Albany Highway, Gosnells.
Forests Department, Todd Avenue, Como
(mainly Eucalyptus).
Wilson & Johns Pty. Ltd., 74 Barrack Street,
Perth.
Roselea Nursery Ltd., 26 Forrest Place, Perth.
Dawson Harrison Pty. Ltd., 122 Barrack Street,
Perth.

Several members of the Tree Society and the W.A. Wildflower Growers' Society Inc. have stocks of potted seedlings. Enquiries could be sent to the respective Societies.

Kodachromes

Kodachrome colour slides and colour illustrations of Western Australian plants can be obtained from various sources. Principal are :—

Natflora, 18 Collier Street, Wembley.
Miss Jean Palmer, 128 Angove Street, North
Perth.
K. L. Watson, 6 The Grove, Wembley (colour
illustrations).

Information

For information on wildflower tours contact the Western Australian Government Tourist Bureau, 772 Hay Street, Perth; or branches at 2 Royal Arcade, Melbourne; 62A King William Street, Adelaide; 22 Martin Place, Sydney.

PLANT QUARANTINE

Plant Quarantine services of the Commonwealth and States work to prevent the introduction of plant pests and diseases from overseas and to check the spread of pests and diseases already here.

In the interests of Australia's primary industries, people travelling other districts or other States are asked not to carry with them fruit, flowers, vegetables, seeds or plant materials.

If you do wish to move these articles, first check with your State Department of Agriculture or the Commonwealth Department of Health, Canberra.

In Perth, the State Department of Agriculture is in Jarrah Road, South Perth.



Sturt pe
(*Clianthus formosu*
(G. Don) N. Ford)

Geraldton wax
flower
(*Chamaelaucium*
uncinatum Schau)



Everlastings
(*Cephalipterum*
Drummondii A. Gra



Blue leschenaultia
(*Leschenaultia biloba* L.)

Scenic Gems

One particular karri in the Warren reserve stands 250 ft. high among hundreds of other specimens of outstanding beauty and grace. It is only 4 ft. 3 in. in diameter but rises a perfect smooth-barked 159 ft. before its faultless symmetry is broken by the first branch.

The two stages of the 350 ft. falls on Beedelup Brook which flows quietly through Beedelup Park attract sightseers from far and wide. Surrounded by bracken ferns and towering trees they rival Western Australia's grandest scenic attractions.

Along the road to Nannup some 11 miles from Pemberton a forest of the purest type is a popular haunt for artists and photographers. Tall, slender karri trees support a canopy almost 300 ft., so dense that insufficient light filters through to encourage heavy undergrowth.

Western Australians cherish their parks as a great natural asset and pay tribute to the foresight of those responsible for the perpetual protection of these scenic gems.

Pemberton road scene

Wildflowers

The uniqueness and variety of Western Australia's wildflowers fascinate all visitors.

Throughout the year 6,000 species, representing the greatest natural collection of floral beauty to be found anywhere in the world, burst into brilliant blossom.

Springtime—mid-August to mid-November—is the gayest period of the year



Male Banded Blue Wren (Splendid Wren) - *Malurus Splendens* - Found only in the South-western areas of Western Australia



Flora Species

From early winter when wattles and sundews first appear until mid-summer when the Christmas tree and red-flowering gums fade there is an abundance of colour everywhere.

Away to the north and inland the vivid red Sturt pea, a trailing plant, contrasts strongly with the barren plain.

Colourful yellow, pink and white everlastings spread from one's toes to infinity in the Murchison and goldfields.

Thousands of magnificent wildflowers exhibit a stupendous range of colours and shapes in the south-west.

The best known *leschenaultia* is a rich ethereal blue. Other members of the species are intense scarlet, pure yellow, and one beautiful variety, a glowing yellow suffused by crimson.

The uniqueness of form of the south-western wildflowers is illustrated perfectly by the rather bizarre nature of the State's floral emblem, the red and green kangaroo paw, which belongs to a genus found exclusively in this region.

Purity and intensity of colour makes the violet hovea an exceptionally popular flower, whilst the pungent boronia found in the winter swampland of the south-west is keenly sought because of its intriguing perfume.

This lavish display of wildflowers, intermingling with magnificent forest country, has become the principal tourist attraction of Western Australia.



Scarlet banksia (*Banksia coccinea* R. Br.)

GUIDE TO WILDFLOWER GROWING

Establishment

The simplest method of establishing plants is undoubtedly by seeds, and these are now becoming available in some quantity in W.A.

Principal seed suppliers are :—

Forests Department, Todd Avenue, Como.

Wilson & Johns Pty. Ltd., 74 Barrack Street, Perth.

Dawson Harrison Pty. Ltd., 122 Barrack Street, Perth.

Roselea Nursery Ltd., 26 Forrest Place, Perth.

Djin Djin Seeds, 26 Garratt Road, Bayswater.

K. Newby, Ongerup W.A. (mainly Eucalyptus).

V. McDougall, Nyabing, W.A.

Seeds also obtainable on application from :—

The Tree Society, 38 Parliament Place, West Perth.

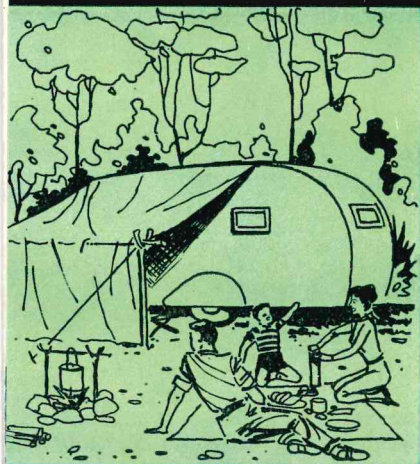
King's Park and Botanic Gardens, Perth.

Cuttings

Many native plants can be established readily by cuttings. The family Myrtaceae, in particular, can be grown in this way, while cuttings from many species in the Boronia family, the Leschenaultia family and the Pea family can be made to root with comparative ease.

There are many amateur native plant enthusiasts in Perth who are successfully striking cuttings of many species, and who could supply cuttings of some of the plants to those who are interested. They are mostly members of the Tree Society, 38 Parliament Place, West Perth, or of the W.A. Wildflower Growers' Society Inc., c/o 87 Todd Avenue, Como. Enquiries should be addressed to these Societies.

FORESTS and FLOWERS OF WESTERN AUSTRALIA



Western Australia's forests and flowers are unrivalled!

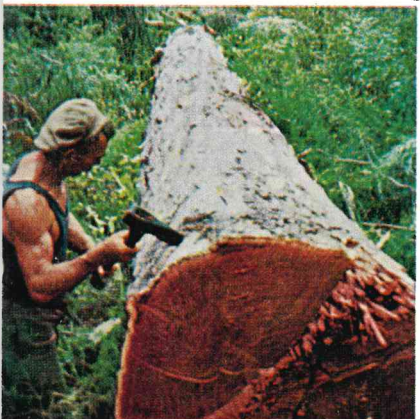
In the vast rain forests of the south-west the "King Karri" reigns supreme. Regal specimens with straight, smooth, almost limbless trunks tower majestically to great heights. On the shady, moist floor beneath, ferns, creepers and a multitude of brilliant wildflowers flourish.

The karri is renowned for its outstanding durability as a building hardwood and is of great economic importance to the State.

Scenic value rivals the industrial importance of these forests and many national parks have been created.

The State's finest forest reserves are near Pemberton.

Warren and Beedelup Parks are the prime stands of virgin karri in the State. Through the former winds a leafy track, part of the old Vasse Road, which was at one time the only link between Busselton and Albany. Warren Park takes in much of the lower Warren River and contains some of Western Australia's loveliest scenery.



Scarfig the karri

The fallen giant