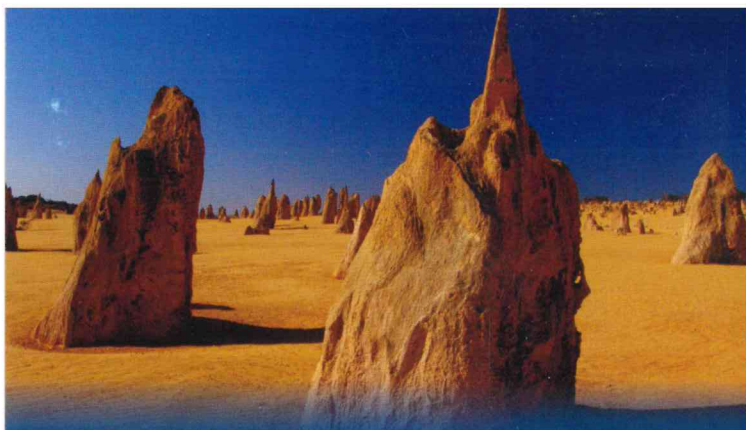


# LIBRARY

Department of Biodiversity,  
Conservation and Attractions

This PDF has been created for digital preservation. It may be used for research but is not suitable for other purposes. It may be superseded by a more current version or just be out-of-date and have no relevance to current situations.



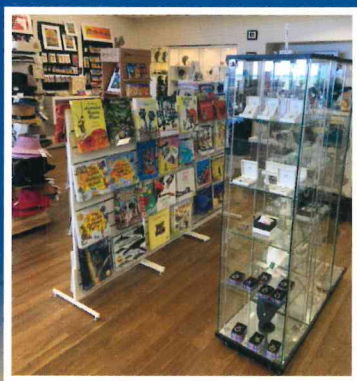
# Pinnacles Desert Discovery

The Pinnacles Desert Discovery is a unique and spectacular experience within Nambung National Park, 200km north of Perth.

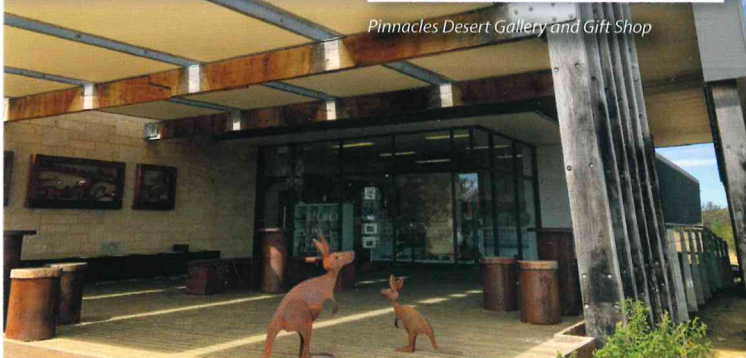
Rising mysteriously from the dune sands are thousands of limestone pillars up to 4m tall; a landscape in eerie contrast to the surrounding heath. Some are jagged, sharp-edged columns rising to a point; others resemble tombstones.

What exactly are the pinnacles? What natural processes created these odd and spectacular structures?


Visit the **Pinnacles Gallery** to find out more about the formation of the pinnacles.




*Pinnacles Desert Gallery and Gift Shop*



## Tracks

 **Pinnacles Drive, 4km one-way loop**  
There are parking bays along the drive.





 1.2km signed walk

 Cervantes  
17km north

## Entry station



## Key

-  Entry station
-  Pinnacles Gallery and Gift Shop
-  Parking area
-  Desert View Lookout

  
0 150m 300m



Leave your  
pets at home.



For your safety and to protect the  
pinnacles, **no climbing please.**

**Parks and Wildlife Service, Turquoise Coast District Office**  
67 Bashford Street, Jurien Bay WA 6516

**Nambung National Park**  
Pinnacles Drive, Cervantes WA 6511  
Phone: (08) 9652 7913  
Email: [pinnacles@dbca.wa.gov.au](mailto:pinnacles@dbca.wa.gov.au)  
[dbca.wa.gov.au](http://dbca.wa.gov.au)

@waporkswildlife



@exploreparkswa



Department of Biodiversity,  
Conservation and Attractions



Information current at November 2022.

This publication is available in alternative formats on request.