

LIBRARY

Department of Biodiversity,
Conservation and Attractions

This PDF has been created for digital preservation. It may be used for research but is not suitable for other purposes. It may be superseded by a more current version or just be out-of-date and have no relevance to current situations.

WITH THE COMPLIMENTS OF
MELBOURNE REPRESENTATIVE

WESTERN AUSTRALIAN GOVERNMENT TOURIST BUREAU

VICTORIAN GOVERNMENT TOURIST BUREAU

QUEEN'S WALK, MELBOURNE.

THE

Beautiful

NATIONAL PARK



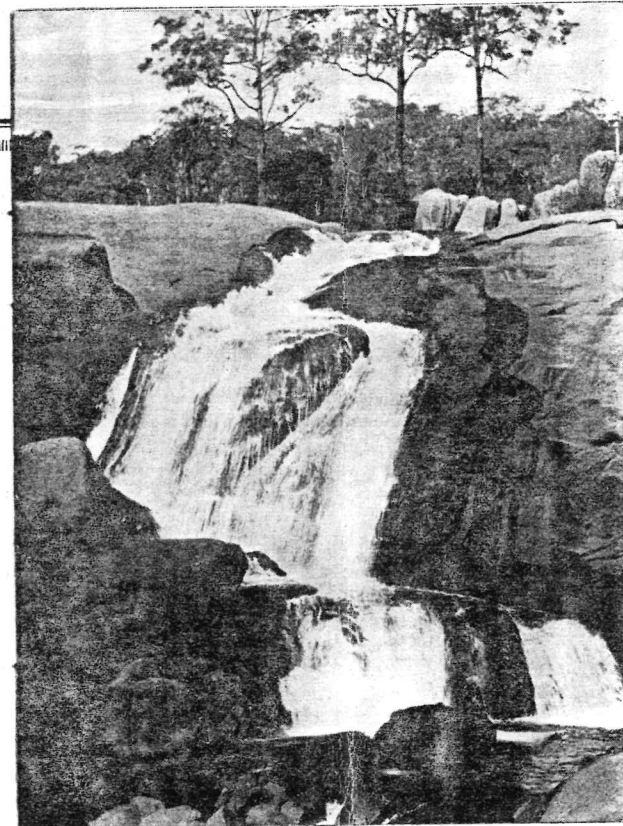
DARLING RANGE
WESTERN AUSTRALIA

The Story of National Park

NATIONAL PARK was reserved for recreation in 1900, and was vested in the State Gardens Board in 1928. It was not until then that development began to take shape. Prior to the State's Centenary year—1929—the park was a No-man's Land—the haunt of the vandal and firewood cutter. Few had any conception of its many and varied beauties. Portion of it was no park at all, but formed reserves for obscure and unnecessary purposes. When acquired by the State Gardens Board, these reserves were freed from their original intentions and added to the park together with 130 acres east of Jane Brook, containing the popular picnic resort known as Rocky Pool, generously given to the Board by the late Mr. W. N. Hedges.

The State Gardens Board receives merely a nominal grant from the Government, and as few of its activities were reproductive, the early stages of developmental work were undertaken with the aid of sustenance men from Blackboy camp, under the supervision of the engineering staff of the Main Roads Board. In the scheme for improvement much interest was taken and assistance given by individuals and business concerns.

With the exception of the concrete pipes used in the culvert construction, the generous gift of the Hume Pipe Company, Ltd., almost the whole of the material used in the development of the park was obtained within its boundaries.

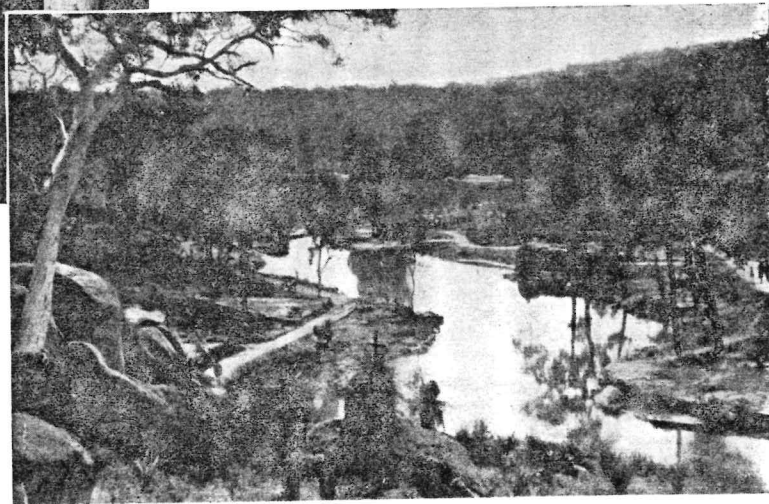


Scenery

THE RESERVE is traversed by the picturesque Jane Brook and the Mahogany Creek, whose confluence is above the swimming pool. The stream meanders through the typical bushlands of the Darling Ranges, babbles round granite outcrops, leaps and tumbles over two considerable falls in succession, and clatters over shingle on its urgent way to reach the sea.

Beautiful Drives

low lying coastal plains, locates Perth and its suburbs, and discovers the Swan in broad stretches of glittering water ; farther out to the horizon, the sparkling sea and Rottneest are plainly visible.



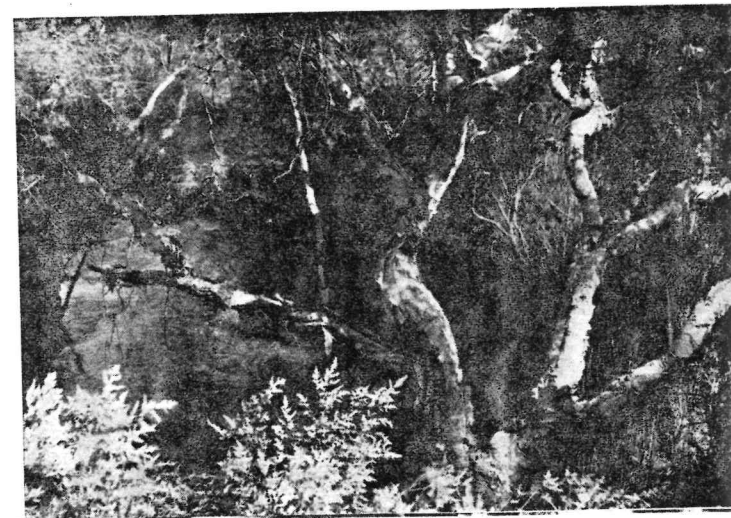
THE CONSTRUCTION of the broad and winding gravel road from the York Road to the swimming pool occupied almost a year to construct, and months were required to erect the weir across the Jane Brook to provide the swimming pool, laying down spacious parking areas, and forming attractive foot walks. Along the road impressive panoramas delight the senses. The eye sweeps wide horizons of



THE PARK is a veritable wilderness, surfeit with beauty which makes a strong appeal to the horticulturist, the lover

Virgin Bushland

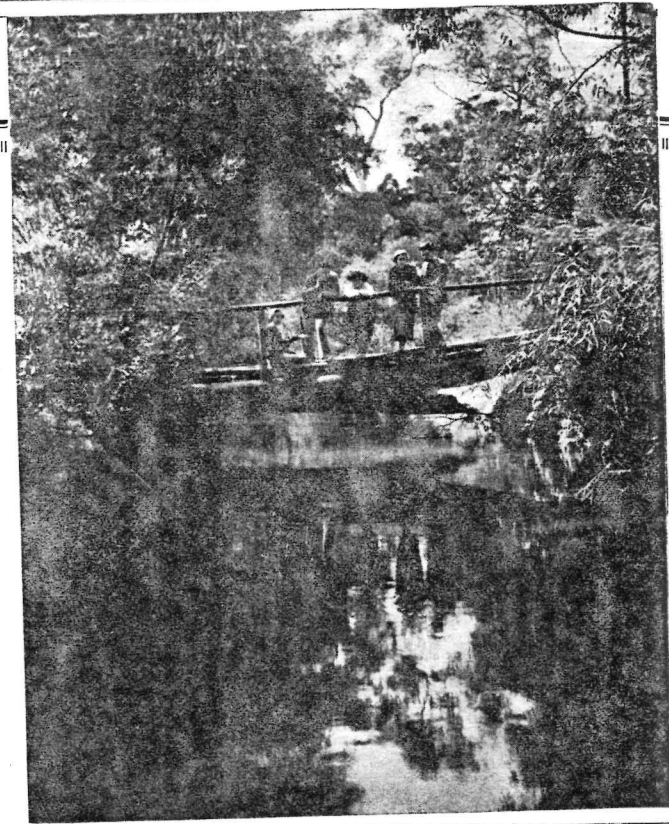
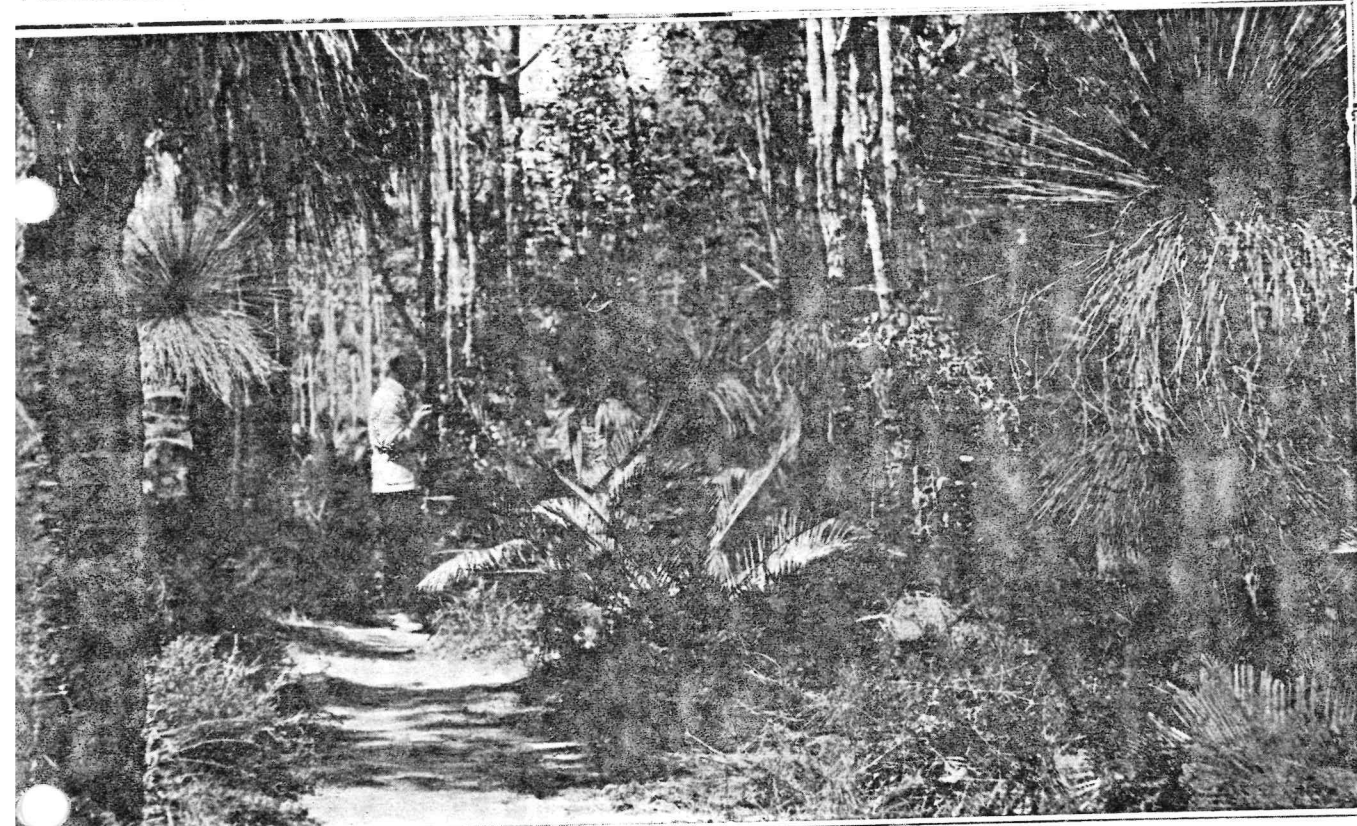
of bird and animal life, and to the student of nature in all its varying moods. The incomparable beauty of Western Australian wild flowers flourishes on all sides.



Flora and Fauna

NATIONAL PARK is a sanctuary for flora and fauna. Wild flowers abound. With the first touch of spring the rich violet hovea, lifting itself royally above the green, creates a delightful picture. Almost immediately follows the blue leschenaultia, and loads of golden wattle literally shower the hillsides.


Kangaroos, wallabies, and emus are plentiful. Opossums and other small animals abound. All the teeming life of the bush is here for those who wish to see, and have patience to search. Bird life in many forms is in evidence everywhere.



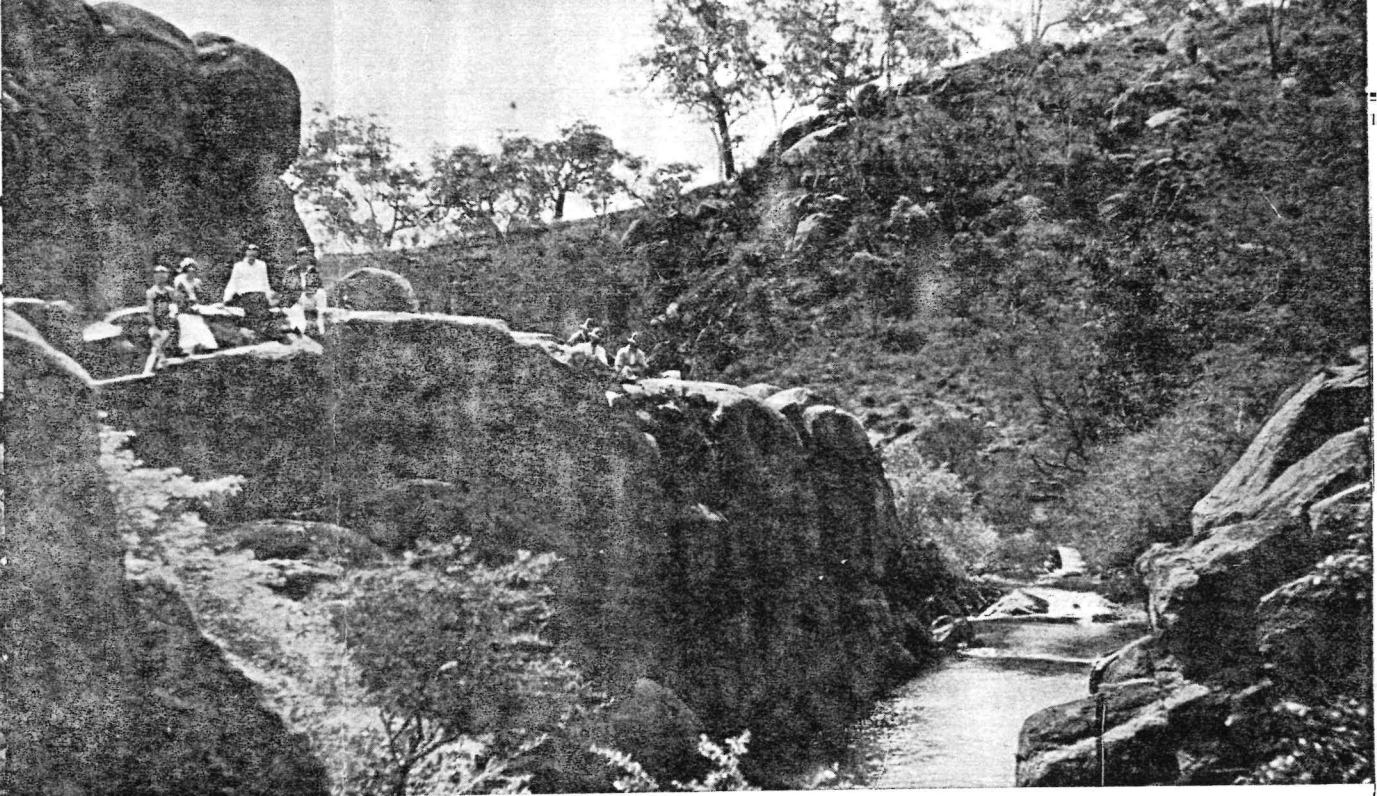


Flowing Cascades

of a different and less tumultuous character. Here the flow, not yet swollen by the water of Mahogany Creek spreads across its bed in a foaming laciness.



NATIONAL PARK FALLS lie west of the swimming pool, a vertical drop of nearly 100 feet, whose winter flow is a deafening roar of angry waters. The Hovea Fall, east of the pool, is



Wonderful National Park

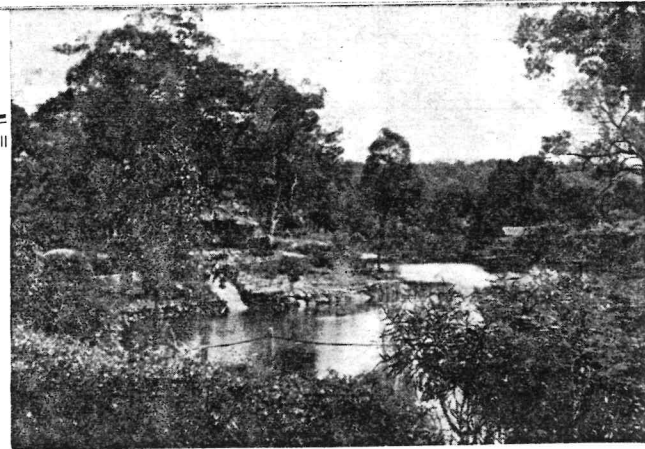
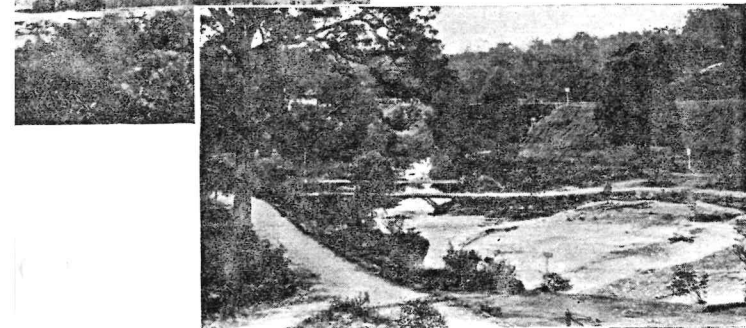
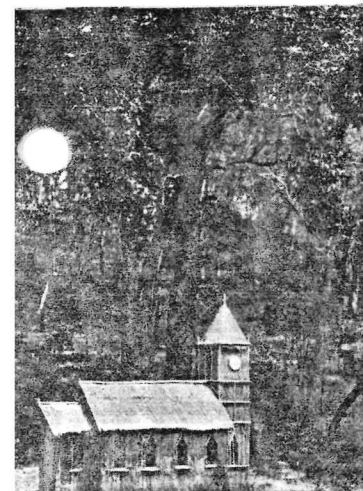
A world famous journalist—Mr. R. G. Lloyd Thomas, of the London "Daily Mail"—expresses his admiration.

*H*OW WONDERFUL is National Park, with its rugged grandeur, and its deliciously humorous architect who is creating a fairy city by a waterfall! Those little rustic houses, the little rustic church, with the hands of its clock firmly pointed for all time, at nine o'clock. It is a most delicious little phantasy enacted in the shadow of a virgin wilderness. The swimming pool—the stone seats hewn out of giant boulders—that lovely stream and the rugged contour of the land so perfectly retained. There is a delicate unassuming touch about this

little fairy village. I am sure it would delight the heart of Sir James Barrie.

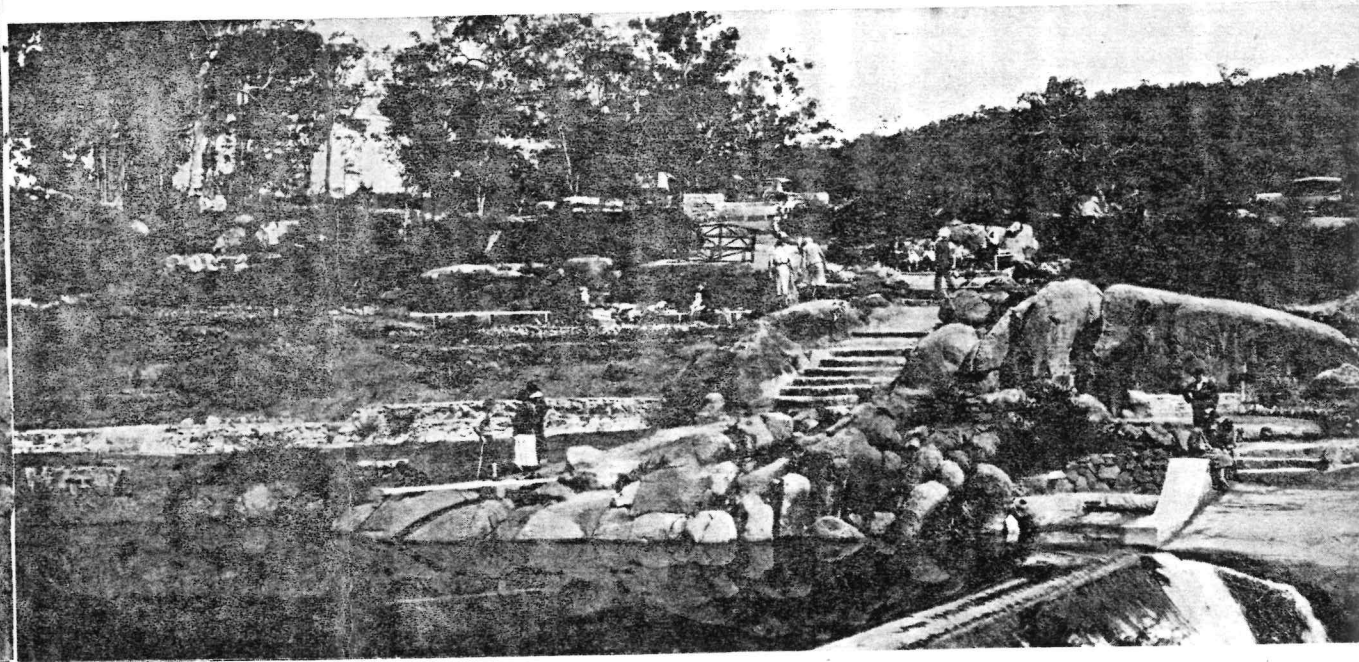
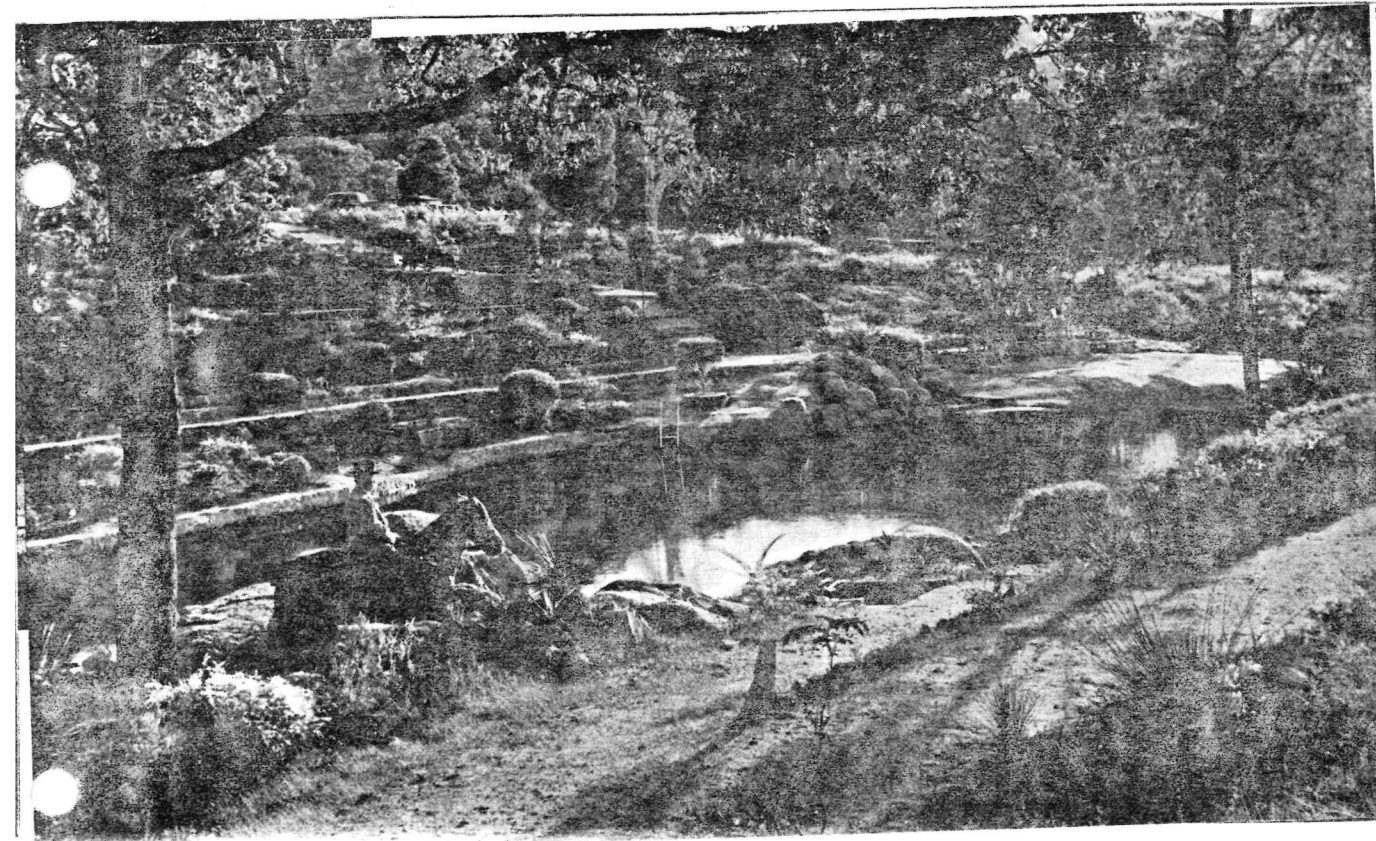
I hope I shall be able to return some day soon and see the dream completed. If there is to be a rugged little fairy square, may Peter Pan sit in the middle of it surrounded by a rockery of toadstools upon which little children may sit and talk to him. That little bit of National Park was the most lovely and refreshing glimpse of Australia I have seen.

A nation that can find room for phantasy in its public lands must be inherently beautiful."



The Swimming Pool

A DISTINCTIVE feature of National Park is the natural swimming pool situated near the parking area. In the background are magnificent formations of rock, the most noticeable being a massive granite which at once suggests a huge elephant of the stone age.

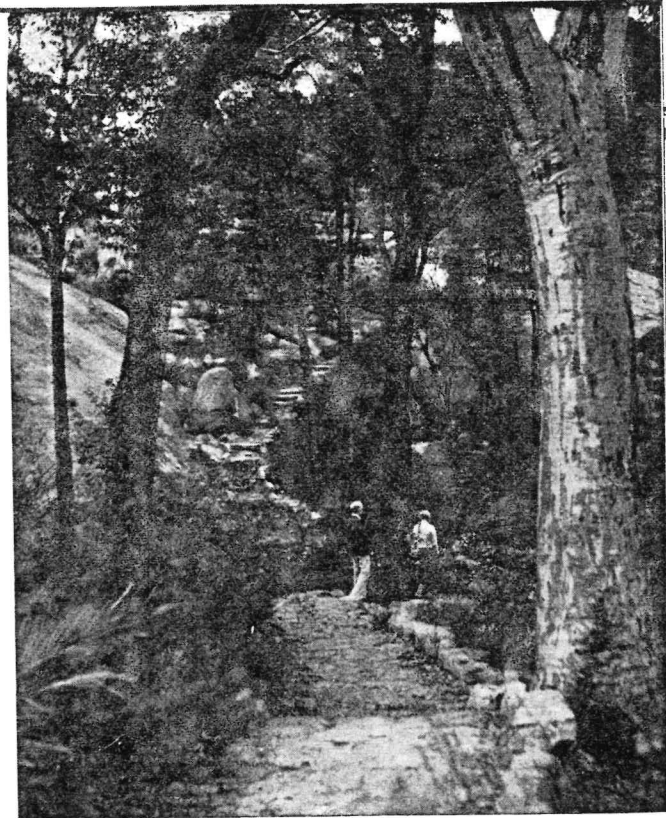
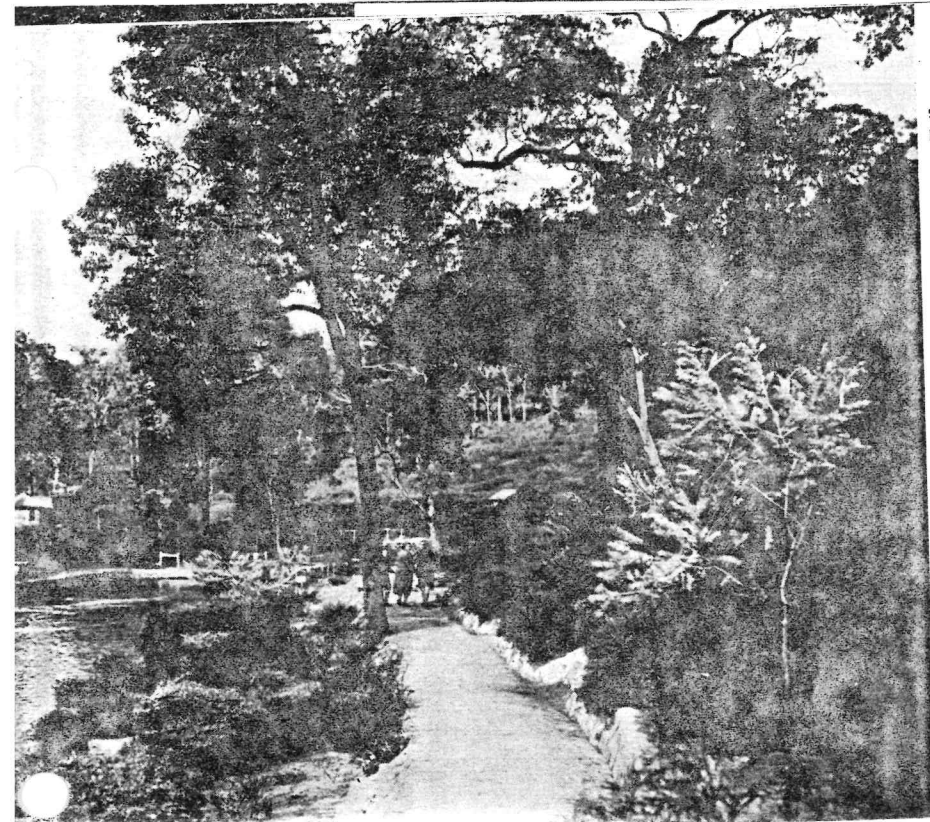


Scenic Beauty

THERE is no more impressive landscape in Western Australia than National Park. It is fortunate that such a glory of scenery should be so easily accessible to the city. The vast domain is portion of Darling Range, situated only fifteen miles from Perth and covers 3,838 acres. In all there are over twenty miles of gravel footpaths, crossing twelve bridges and

leading to innumerable shady nooks and rest houses, all of which are of original and unconventional design.

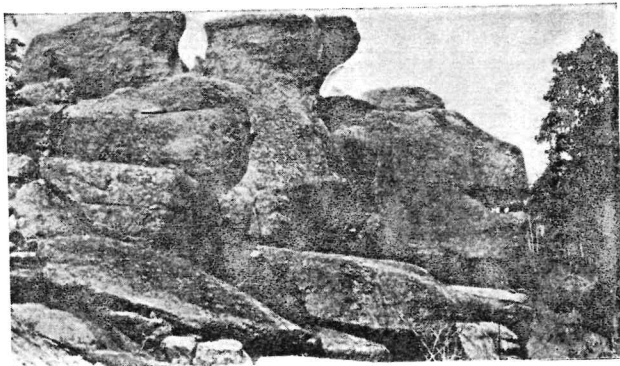
In season a glorious array of wild flowers meets the eye, but more particularly in the specially constructed flower beds replete with many planted varieties. Here an attempt has been made to epitomise the park by concentrating specimens of the floral wealth to be found throughout its vast area. It is difficult to imagine anything more beautiful than the patches of *leschenaultia*, in royal contrast to the furry heads of white *conostylis*, coral creepers, gleaming red *grevillea*, golden *lambertia*, the *dampiera* of deeper blue, and rivalled in colour only by the many flowered spikes of the tall azure sun orchids so plentiful throughout the park.



Ideal for All

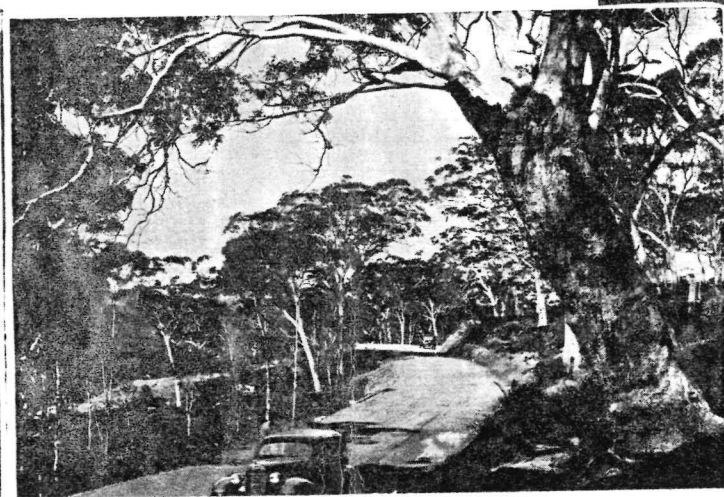
travellers have expressed in glowing terms, their admiration of the remarkable grandeur and interest which this unique spot affords, particularly the massive rock formations, the giant trees, and the flowing cascades.

National Park is ideal for picnic parties, or for a day's outing. Hot water and refreshments are obtainable at the kiosk, and parking space for hundreds of cars is available close to the swimming pool.

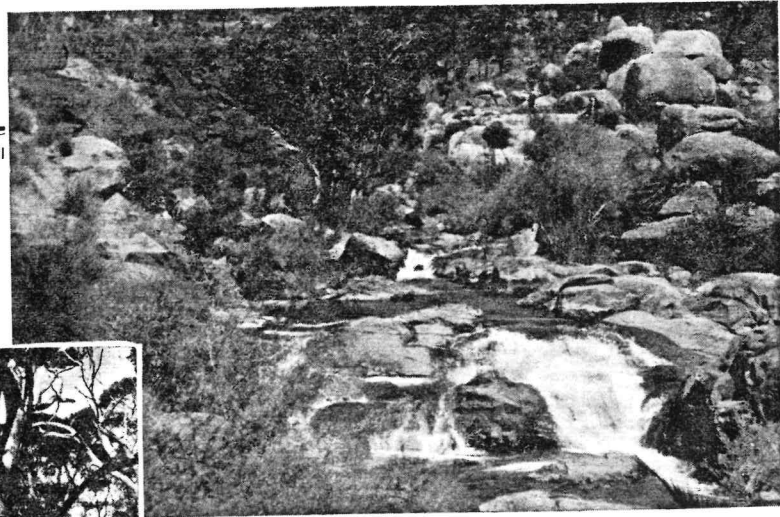


Unsurpassable

The main swimming pool has a length of over 100 yards, with shelving sides gradually deepening to the centre. Here the bather finds a great deal provided for his enjoyment, including spring boards, landing steps, turn-

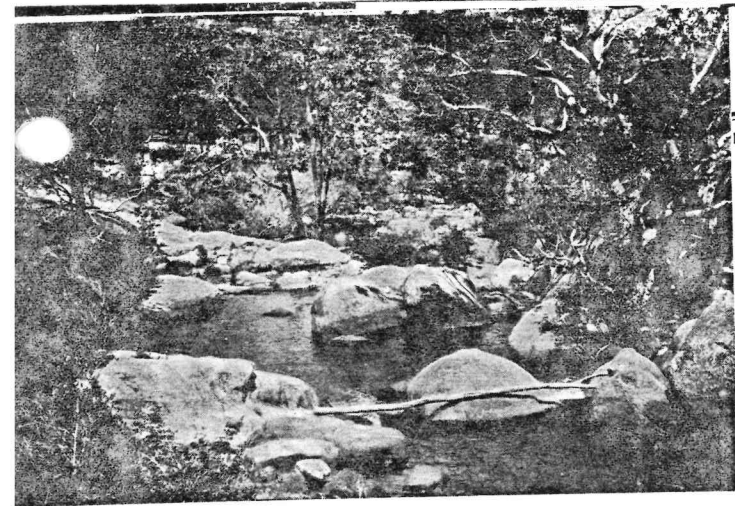


ing boards, and dressing sheds. Adjoining this pool is a shallower basin reserved for children, a chain square, and perfectly safe. Seats of weatherworn stone surround the pool, each seat being of distinctive design. The swimming pool is fed with clear crystal running water, which has its source in Mount Helena, thence it passes along the Jane Brook and Mahogany Creek.



A Glorious Playground

THERE is enough delight in moving about National Park, from one place to another, to satisfy every taste and temperament. For the artist and photographer the possibilities are almost bewildering; while for the lover of outdoor life there is the good smell of mother earth, the delightful rambles through unspoiled forests, and the sights that only nature can provide. Many experienced

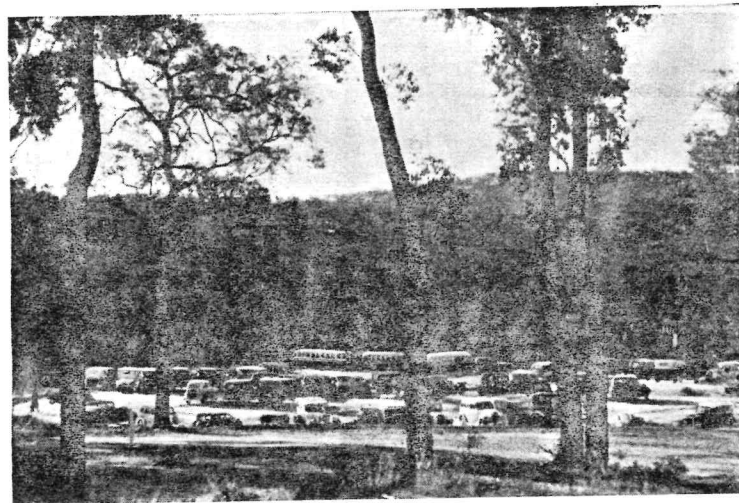


For Motorists

By Road or Rail

VISITORS travelling by car traverse the York Road, which forms the southern boundary of the reserve. The distance from Perth to the entrance gate is fifteen miles. A perfect gravel road winds its way around the hillsides to the swimming pool, a distance of five miles. One would travel far to find a panoramic view of such magnificence as that revealed from the "Look-out," 1,000 feet above the level of the sea. From this point may be discerned the city of Perth, the Swan River meandering about its environs, Rottnest on the distant horizon with the silver sea and the port of Fremantle between.

Visitors are also catered for by a train service which lands passengers right in the heart of the park, near the swimming pool. The train service gives ample time for a thorough enjoyment of the many beauty spots.



AT FREQUENT intervals throughout the year parlour coach tours to National Park are conducted by the Government Tourist Bureau, whilst smaller parties (from four to six) can be catered for at any time by motor car at moderate rates.

Entrust all your travel arrangements to the

GOVERNMENT TOURIST BUREAU

28-30 FORREST PLACE (OPPOSITE G.P.O.),
PERTH.

Telephones : B 4376 and B 9121.

Cables and Telegrams : "Tourist," Perth.