

LIBRARY

Department of Biodiversity,
Conservation and Attractions

This PDF has been created for digital preservation. It may be used for research but is not suitable for other purposes. It may be superseded by a more current version or just be out-of-date and have no relevance to current situations.

3-0611
we

West Australian
JARRAH & KARRI

29 NOV 1956



Presenting two of
the World's Finest
Hardwoods—

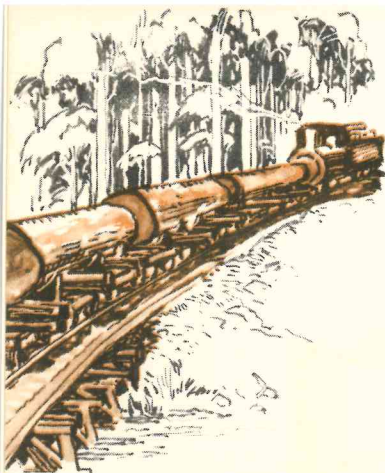
West Australian
JARRAH
and
KARRI

This brochure is published by the West Australian Jarrah and Karri Interstate Export Association, in support of their Exhibit in conjunction with the FOURTH, ALL AUSTRALIA TIMBER CONGRESS, SYDNEY, 1956.

During the Congress the Exhibit will be on display in the Art Gallery of Messrs. David Jones Ltd., (8th Floor), Elizabeth Street, Sydney.

COVER

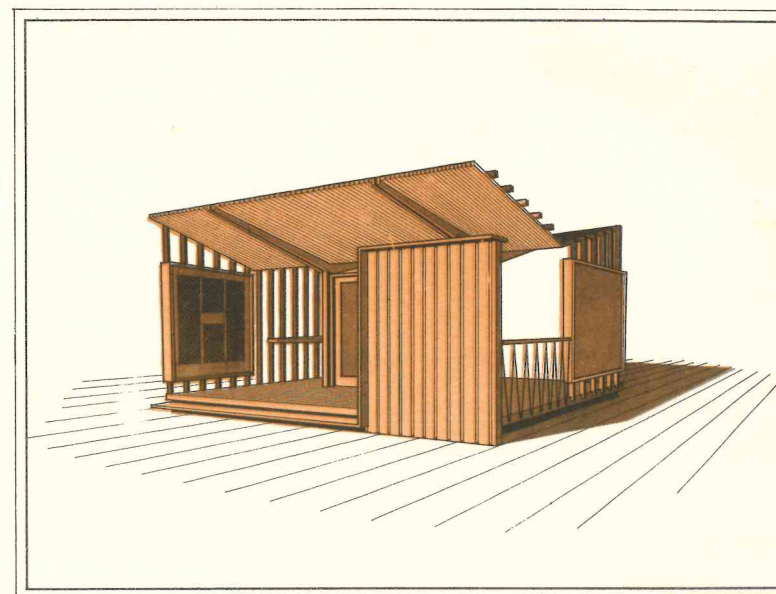
In the heart of the West
Australian Karri forest.



JARRAH and KARRI have WORLD RECOGNITION

In Western Australia, the sawmilling industry is established in the South West corner of the State. Over a long period of years it has produced large quantities of high grade Jarrah and Karri timbers which have earned the praise and respect of constructional engineers, architects and builders in Australia and overseas.

Outstanding for their hardness, strength and durability, they are widely used—in the case of JARRAH, for general building purposes, flooring, furniture, wagon and ship building and sleepers — in the case of KARRI, for heavy constructional work, wagon and ship building, building requirements above ground and plywood. The industry has built up a beneficial export trade in mining timbers, wharf timbers, railway wagon sections, cross-arms, sleepers and flooring.



West Australian Hardwoods Exhibit, in conjunction with **The Fourth, all Australia Timber Congress,** **Sydney, 1956**

The Exhibit has been especially designed to demonstrate as fully as possible the uses of JARRAH and KARRI TIMBERS in house building. These include, internally, various types of flooring, skirtings, door and window frames and other joinery, and externally, such items as weatherboards, studs, roof timbers and battens, facias and posts.

The qualities of these timbers, both in appearance, strength and workability, may readily be seen.

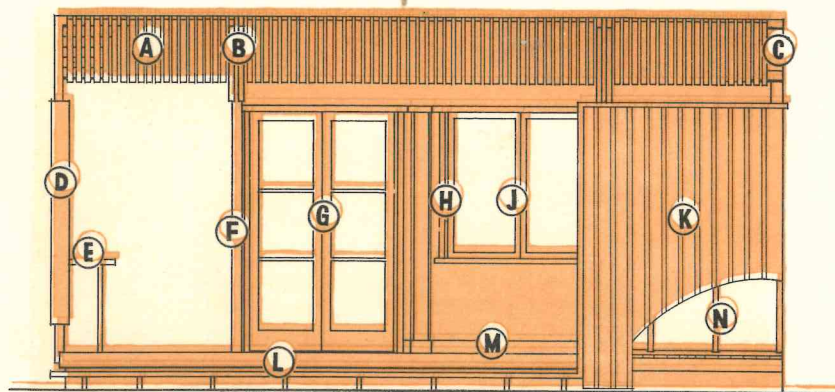


EXHIBIT ELEVATION

- | | |
|---|---|
| A Battens: 2" x 1" Karri. | H Architraves: 2" x 1" Jarrah. |
| B Tapered Cantilever Supports: 7" x 2" Jarrah. | J Casement- Frame and Sashes: Jarrah. |
| C Joists: 3" x 2" Karri. | K Vertical Rusticated Weatherboards: 6" Karri. |
| D Surround of Display Panel 6" x 1½" Jarrah. | L Facia: 5" x 1½" Jarrah. |
| E Information Desk: ex 2" Jarrah. | M Skirting: 4" x 1" Jarrah. |
| F Main Supports: 12" x 3" Jarrah. | N Studs: Jarrah. |
| G Casement Frame and Doors: Jarrah. | |

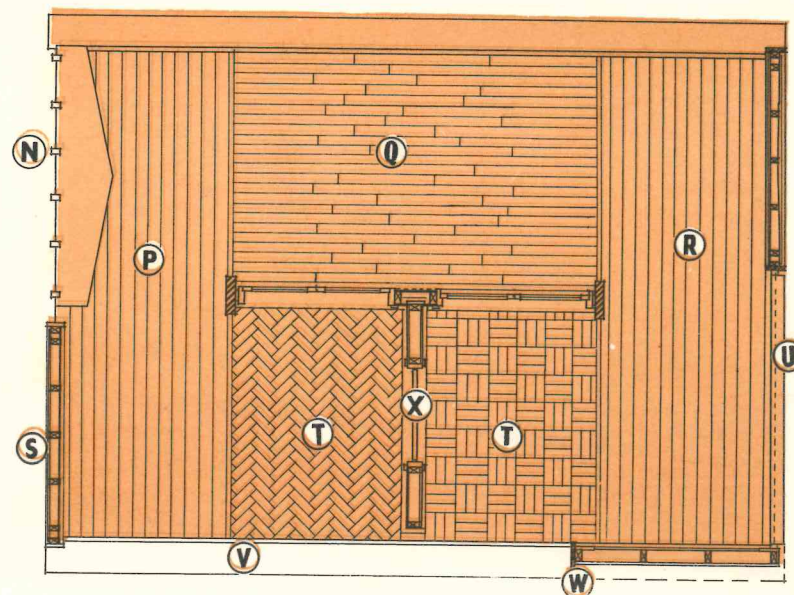


EXHIBIT GROUND PLAN

- | | |
|--|---|
| P Random Length: 4" x 1" Jarrah T & G Flooring. | T Parquetry Jarrah Flooring: 3" x 1". |
| Q End-Matched: 3" x 1" Jarrah T & G Flooring. | U Handrail: 5" x 2" Jarrah. |
| R Random Length: 4" x 1" Karri T & G Flooring. | V Step: 11" x 1½" Jarrah. |
| S Horizontal Weatherboards: 4" Jarrah. | W Surround: 12" x 1½" Jarrah. |
| | X Swing Door, with Vertical Jarrah Lining. |



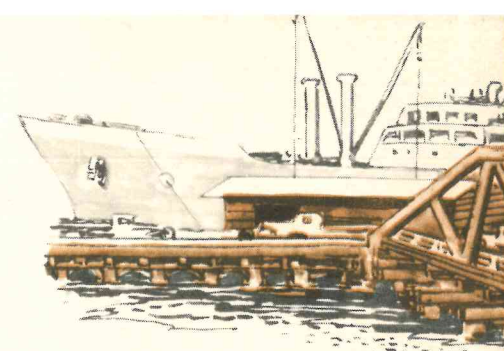
FOREST REHABILITATION

During recent years great progress has been made by the West Australian Department of Forests in the rehabilitation of the forest areas. Effective fire control methods have been introduced, and also a control plan established, so that the

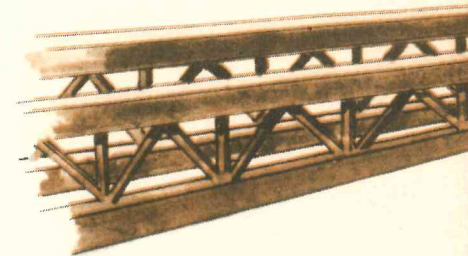


cutting of Jarrah and Karri will be on a "sustained yield" basis. Under such regulated cutting, it should be possible to continue the present output in perpetuity.

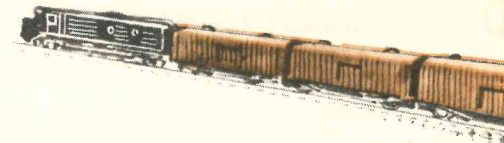
JARRAH *for*
**BRIDGES and HARBOUR
WORKS . . .**



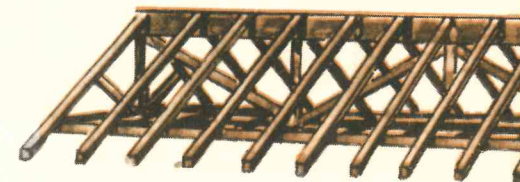
KARRI *for*
TRUSSES and BEAMS



KARRI *for*
RAIL-WAGONS

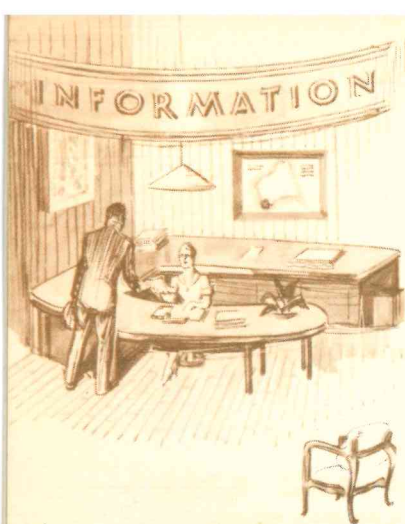


KARRI *for*
ROOF TIMBERS



JARRAH *for*
FURNITURE





FACILITY of SUPPLIES

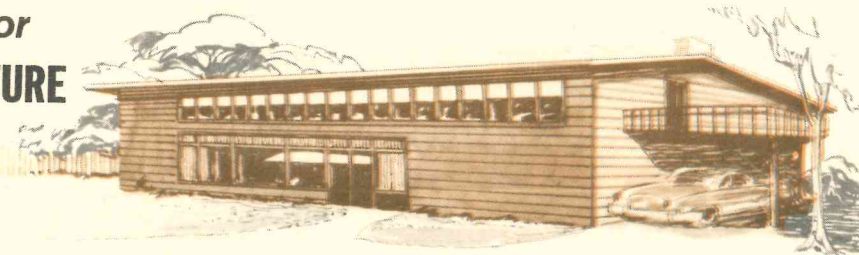
During the immediate post-war period, large quantities of local sawn timber were required in Western Australia to support the vast re-building programme.

With this problem largely overcome, supplies for Interstate markets are now freely available; indeed, due to the impressive expansion of the saw-milling industry, Western Australia is in a position to relieve the present substantial importation of overseas timbers into other Commonwealth States and thus assist materially in the conservation of overseas funds.

GRADING

The high standard of timber grading performed by officers of the West Australian Department of Forests has, for many years, earned the praise of the C.S.I.R.O. and leading wood technologists in Australia. The grading rules followed are those approved by the Standards Association of Australia.

**BUILD for
the FUTURE
with**



West Australian
JARRAH & KARRI

ENQUIRIES

Set out below are the names and addresses of the principal producers in Western Australia; also their representatives in New South Wales to whom all enquiries should be directed.

WEST AUSTRALIAN JARRAH AND KARRI INTERSTATE EXPORT ASSOCIATION

PRODUCERS

BUNNING BROS. PTY. LTD.,

49 Charles Street,
WEST PERTH

MILLARS' TIMBER & TRADING CO. LTD.

115 St. George's Terrace,
PERTH

STATE SAWMILLS,

306 Murray Street,
PERTH

THE KAURI TIMBER CO. LTD.,

57 James Street,
GUILDFORD

WORSLEY TIMBER PTY. LTD.

63 St. George's Terrace,
PERTH

REPRESENTATIVES IN NEW SOUTH WALES

G. C. CADDEN PTY. LTD.,

50 Alexander Street,
CROWS NEST, SYDNEY
N.S.W.

MILLARS' TIMBER & TRADING CO. LTD.

19 Bridge Street,
SYDNEY, N.S.W.

WESTERN AUSTRALIAN GOVT. LIAISON OFFICE,

82 Pitt Street,
SYDNEY, N.S.W.

GEORGE HUDSON PTY. LTD.,

1 Bridge Road,
GLEBE, N.S.W.

Wm. HAUGHTON & CO. LTD.,

24 Jamieson Street,
SYDNEY, N.S.W.

