

# LIBRARY

Department of Biodiversity,  
Conservation and Attractions

This PDF has been created for digital preservation. It may be used for research but is not suitable for other purposes. It may be superseded by a more current version or just be out-of-date and have no relevance to current situations.

## Bookings and Enquiries

### **First book by phone, fax or E-mail**

Phone The Hills Forest weekdays between 8.30am and 2.30pm on  
(08) 9295 6149 or (08) 9295 6300, fax on (08) 9295 3247 or  
E-mail: [jillf@calm.wa.gov.au](mailto:jillf@calm.wa.gov.au).

### **Confirmation letter**

A confirmation letter with details of your PD day, excursion or activity  
will then be forwarded to you.

### **Send your payment**

Please make cheques payable to: Department of Conservation and Land  
Management and send to:

Exploring The Hills Forest Programs  
Department of Conservation and Land Management, The Hills Forest,  
Mundaring Weir Road,  
MUNDARING WA 6073

### **Cancellations**

Please phone, then confirm your cancellation in writing by fax at least  
one week before your booked visit.

### **Find out more**

Teachers can find out about all the Department's educational programs  
in the 'For Schools' section of the NatureBase Internet site at  
<http://www.naturebase.net>

*Note: All costs in this brochure include 10% GST. Our programs and  
activities are curriculum based so the GST can be reclaimed.*

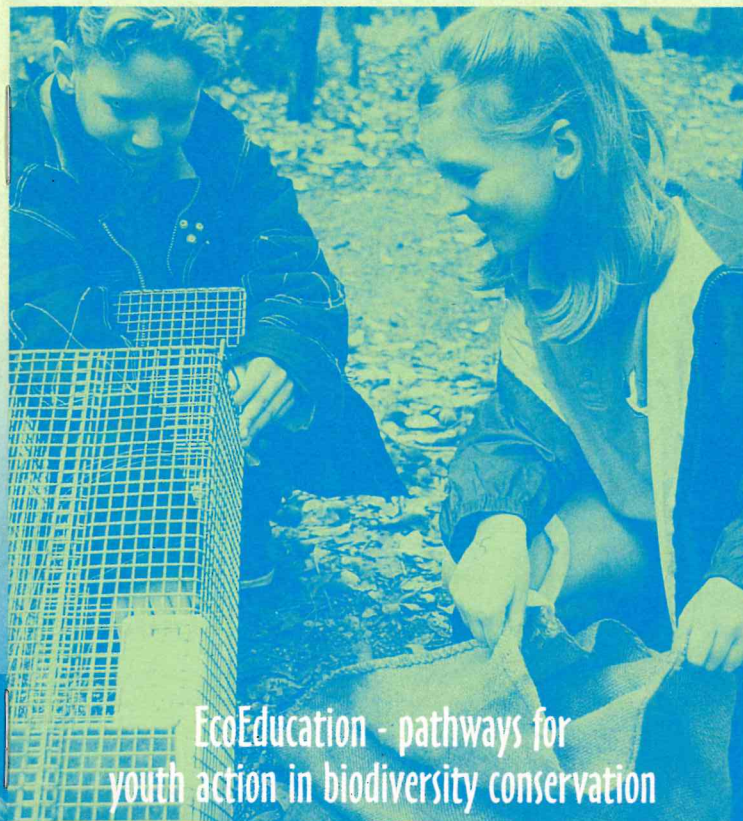
The Hills Forest Discovery Centre is a smoke free zone

Printed on recycled paper

2003059-02-3M

## Exploring The Hills Forest EcoEducation Programs

with your primary students in 2003



EcoEducation - pathways for  
youth action in biodiversity conservation

Exploring The Hills Forest EcoEducation programs are  
based in the jarrah forest near Mundaring.  
They provide many excursion opportunities and  
classroom resources that support the outcomes  
focused approach of all curriculum Learning Areas.





## About the Department

The Department of Conservation and Land Management, in partnership with the community, has the task of conserving Western Australia's biodiversity, and managing the lands and waters entrusted to it, for their intrinsic values and for the benefit of present and future generations.

The area managed is a significant portion of the State, including national parks, State forests, nature reserves, marine parks and timber reserves. It is a large task and one that requires the awareness, understanding and involvement of the wider community.

### 🌀 **Nearer to Nature**

The Department's Nearer to Nature program based at the Centre offers opportunities for locals and visitors to participate in guided activities in natural environments around Perth.

### 🌀 **Exploring The Hills Forest EcoEducation programs**

These programs have been developed for school students of all ages. They have been developed and written by local educators. Since 1993 more than 110,000 students and teachers have been through our programs and the demand is growing.

## Great opportunities and what's new!

- PD at your school - date and time to suit you
- Special Offers for Special Events - see details, this brochure
- \$50 excursion discount for teachers attending a PD - tell a colleague
- \$50 discount for Monday two-class bookings
- Bushcare . . . builds biodiversity - new middle primary excursion
- Moodjitch binar - a new Aboriginal culture excursion for Early Childhood
- Forest Detectives Trail - new classroom manual for middle primary
- Monitoring Marsupials - camp and help with Western Shield trapping
- Go frogging at night - a new nocturnal experience

We offer activities for every year level. Each program includes an excursion to The Hills Forest, which is guaranteed to be interactive, informative and exciting.



## 1. Discovering The Hills Forest for Years 6 & 7

This program explores the jarrah forest ecosystem. It fulfils outcome requirements in all Learning Areas particularly the core value of *Environmental Responsibility*. Students learn to lessen their impact on the forest and its resources.

### What teachers had to say about the program:

*"The program including the resource package was excellent in terms of hands-on, problem solving, decision making and fun." - Anthea*  
*"I appreciated the support from personnel and relevant material for my teaching program." - Jenny*

## What's involved?

### 🌀 **Teacher Professional Development (PD) day in the forest**

This gives teachers an overview of our programs, a resource package and experience of the activities students will encounter during excursions.

### 🌀 **Pre-visit and post-visit activities at school**

Teachers use the resource package to prepare students for the excursion, and follow up afterwards.

### 🌀 **Student excursion**

A one-day field trip into the forest led by Education Officers.

### 🌀 **Student numbers**

Minimum: 25 students per class

### 🌀 **Cost**

PD day: \$55.00 per teacher (includes lunch and resources)  
Excursion: \$7.70 per student.

### 🌀 **Time**

Excursion: 10am to 2pm

### 🌀 **When?**

PD days: (see dates under *Professional Development 2003*)  
Excursions: Weekdays, 1 March to 30 November





## 2. Catchment Carers' Trail For Years 5, 6 & 7

### An ideal program for the International Year of Freshwater 2003

This learning program about the water cycle, catchments and water resource management runs with sponsorship from the Water Corporation. It leads to investigations in all aspects of the Society & Environment Learning Area, particularly *Place and Space, Resources and Natural and Social Systems*.

#### What a teacher had to say about the program:

"The trail re-inforces many concepts in our Society and Environment and Language program." - Mark

"This excursion is sensational!" - Sandra

"The Leader was an outstanding communicator." - Imogen

### What's involved?

#### Teacher and student resource notes

A booklet of notes will be forwarded to teachers who book the excursion. A PD day is recommended.

#### Pre and post-visit activities at school

Teachers may use the notes to prepare students for the excursion and follow-up.

#### Student excursion

A one-day field trip which includes:

- an interactive walk trail focusing on issues such as salinity, erosion, nature conservation and the water cycle, and
- tour of the Mundaring Weir, its history and use as part of an integrated water system.

*Note: There is no access to the reservoir water body during this excursion.*

#### Student numbers

Minimum: 25 students per class

#### Cost

Excursion: \$6.05 per student

*Note: \$50 discount for Monday, two-class bookings*

#### Time

9.45am to 2pm

#### When?

Weekdays  
Terms 1, 2, 3 and Term 4  
until 30 November.



## 3. Threatened Species program For Years 5, 6 & 7

### Back from the Brink Excursion

A program raising student awareness of Western Australia's threatened species and current projects aimed at preventing further extinctions. This program fulfils student outcomes required by Society & Environment, and Science Learning Areas and addresses the core value of *Environmental Responsibility*.

#### What teachers had to say about the program:

"The Action Pack was a terrific resource for students. Excellent support resource - the extension activities were great too." - Bronwyn

"The whole experience has changed my class. They now talk of WA animals with confidence. One of the best experiences of my teaching career." - Anne

"Fantastic! Will return next year."

### What's involved?

#### A PD night to remember

See details for this 'Special Opportunity' under Professional Development 2003.

#### Western Shield Action Pack for pre and post-visit activities

This Action Pack will be forwarded to teachers who book the excursion. The pack contains teacher notes, resource sheets and activity sheets for classroom work, and suggestions for extension activities that link with the curriculum.

The Action Pack is also available in the 'For Schools' section of the Department's NatureBase Internet site at <http://www.naturebase.net>

#### Student excursion

A one-day field trip which includes:

- a hands-on session participating in the Department's monitoring methods,
- a tour of The Hills Forest's animal habitat project, and
- a close encounter with threatened native animals.

#### Student numbers

Minimum: 25 students per class

#### Cost

Excursion: \$7.70 per student

*Note: \$50 discount for Monday, two-class bookings!*

#### Time

10am to 2pm

#### When?

Weekdays



## Win!! A Back from the Brink Excursion

Classes that complete the activities can enter a draw to win an excursion to The Hills Forest. See previous panel for a summary of the excursion's hands-on activities.

### What teachers had to say about the excursion:

*"Excellent practical hands-on sessions which gave my students a clear and invaluable insight into the work and results of the Western Shield threatened species program."* - Darren

### What's involved?

#### Western Shield Action Pack

Complete the activities in the pack with your class. By 21 October send the registration form with the completed Activity Sheets from ONE of your students and a poster promoting the Department's Western Shield program saving threatened species to:

*Win a Back from the Brink excursion  
The Hills Forest Discovery Centre  
Mundaring Weir Rd, Mundaring 6073*

Successful classes will be notified and a date arranged for the excursion.

#### Student excursion

A one-day field trip which includes:

- a hands-on session participating in the Department's monitoring methods,
- a tour of The Hills Forest's animal habitat project, and
- a close encounter with threatened native animals.

#### Student numbers for excursion

One class of students

#### Cost

Obtain a quotation for bus travel. Fax this and send the invoice to The Hills Forest. No excursion fee.

#### Time

10am to 2pm

#### When?

November, date to be arranged



## 4. Forest focus walks and activities for Years 1 to 7

Year-round excursion activities to suit your needs, focusing on the forest environment, plants, birds, spiders, reptiles and invertebrates. All activities help to instil the value of *Environmental Responsibility* and the need to maintain the *Diversity of Species*.

### What's involved?

Teachers choose one or more of the activities listed below to make up an excursion day or to enrich a school camp.

### Monitoring Marsupials (Years 6 & 7)

A unique opportunity for students on camp to be part of Western Shield research; to set traps and check them the next morning; to measure the head length of a wild chuditch or check the pouch of a bandicoot. Limited offer for three classes only.

#### Duration

2 hours (1hour, morning and afternoon)

#### When?

March to May, October to November

#### Cost

\$4.95 per student

#### Minimum

25 students

#### Maximum

1 class

### Bush Tucker Supper (Years 5, 6 & 7)

Enjoy an evening in our campsite with Nyoongar leaders, learn about Nyoongar nutrition and then make and eat a damper and kangaroo supper while listening to Dreamtime stories.

#### Duration:

2 hours

#### Cost:

\$6.60 per student

#### Minimum:

25 students

#### Maximum:

1 class



## Place and Space for Reptiles (Years 4 to 7)

A chance to touch a real live skink, python or lizard at the Centre. Students learn that the care of places provides spaces for a *Diversity of Species*.

- 🕒 **Duration**  
1 hour
- 💰 **Cost**  
\$3.30 per student
- 👥 **Minimum**  
25 students
- 👥 **Maximum**  
1 class



## Night Life and Living (Years 3 to 7)

Students will recognise the interdependence of life as the forest comes alive after dark. Make this part of your camp at The Hills Forest campground.

- 🕒 **Duration**  
1.5 hours
- 💰 **Cost**  
\$3.30 per student
- 👥 **Minimum**  
25 students
- 👥 **Maximum**  
1 class



## Spiders – A Diversity of Spiders (Years 1 to 7)

Students will learn to value our amazing arachnids and the importance of maintaining a *Diversity of Species*.

- 🕒 **Duration**  
1 hour or 2 hours
- 💰 **Cost**  
\$2.20 (1 hr session) or \$3.30 (2-hr session)
- 👥 **Minimum**  
25 students
- 👥 **Maximum**  
1 class
- 📅 **When?**  
1 March to 15 June; 13 October to 20 December



## Animal encounters

Students will meet close up some of our unique native fauna, including marsupials and their special adaptations to our climate, and find out about the work of committed animal carers.

- 🕒 **Duration**  
1 hour
- 💰 **Cost**  
\$3.85 per student
- 👥 **Minimum**  
25 students
- 👥 **Maximum**  
1 class

## Investigating the Underworld (Years 1 to 7)

Students will investigate, communicate and participate in a hands-on search of the jarrah forest underworld. They will explore the lives of beetles, bugs, spiders, ants, scorpions, earwigs, mantises and many more.

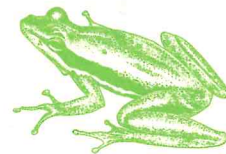
- 🕒 **Duration**  
1 hour or 2 hours
- 💰 **Cost**  
\$2.20 (1 hr session) or \$3.30 (2hr session)
- 👥 **Minimum**  
25 students
- 👥 **Maximum**  
1 class

## Frogs – environmental watch dogs (Years 1 to 7)

Students will discover the value of frogs and then learn where to find them in the forest.

**NEW!**

- 🕒 **Duration**  
2 hours
- 💰 **Cost**  
\$3.85 per student
- 👥 **Minimum**  
25 students
- 👥 **Maximum**  
1 class
- 📅 **When?**  
1 June to 21 September



## Sense-ational Trail (Years 1 to 7)

Using blindfolds students explore the forest along our rope walk using their senses of smell, touch and hearing.

- 🕒 **Duration**  
1 hour
- 💰 **Cost**  
\$2.20 per student
- 👥 **Minimum**  
25 students
- 👥 **Maximum**  
1 class





# 5. Forest Detectives Trail for Middle Years 5, 6 & 7

NEW!

Students use their investigating and inquiry skills to solve a mystery and track down an animal by identifying footprints, scats, skin and other signs along the trail. The new **FDT manual** for classroom use will especially enhance your Science program.

## What's involved?

### Teacher PD day in the forest

Attendance at a PD day is important. It provides teachers with an overview of the day and a chance to experience excursion activities.

### Pre-visit and post-visit activities at school

The new FDT manual provides fun, challenging and cross curricular activities that help your students train to become Forest Detectives.

### Student excursion

Activities include a secret investigators 'case briefing' session, an animal encounter session and a prime suspect trail that helps solve the mystery.

### Student numbers

Minimum: 25 students per class

### Cost

PD day: \$55.00 per teacher (includes lunch and resources)  
Excursion: \$7.70 per student

### Time

10am to 2pm

### When?

PD days: (see dates under Professional Development 2003)  
Excursions: Weekdays,  
Terms 1, 2, 3 and 4 until  
30 November.



# 6. Bushcare for Years 5, 6 & 7

NEW!

Students hone their bushcare skills and find out how these help to build biodiversity. This is an action packed excursion all under a code of conduct that ensures the survival of the bush.

## What's involved?

### Teacher PD in the forest

Attendance at a PD day is important. It provides teachers with an overview of the day and a chance to experience excursion activities.

### Pre-visit and post-visit activities at school

Teachers prepare students for the excursion using our notes for the classroom.

### Student excursion

Activities include bush survival techniques that have minimum impact on the natural environment; bush walk planning, water collection, navigating by compass, knots and ropes, safety and signals.

### Student numbers

Minimum: 25 students per class

### Cost

PD day: \$55.00 per teacher (includes lunch and resources)  
Excursion: \$7.70 per student

### Time

10am to 2pm

### When?

PD days: (see dates under Professional Development 2003)  
Excursions: Weekdays, Terms 2, 3 and 4



## 7. Biodiversity's Base – Incredible Invertebrates for Years 4 & 5

NEW!

### What's involved?

#### Teacher PD in the forest

Attendance at a PD day is important. It provides teachers with an overview of the day and a chance to experience excursion activities.

#### Pre-visit and post-visit activities at school

Teachers prepare students for the excursion using our resource package for the classroom, forwarded on booking an excursion. Students build up a picture of a mystery beast.

#### Students excursion

Students find the mystery beast and discover, magnify and study other amazing macrobeasts that maintain forest biodiversity

#### Students numbers

Minimum: 25 students per class

#### Cost

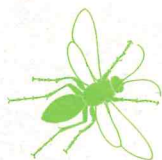
PD day: \$55.00 per teacher (includes lunch and resources)  
Excursion: \$7.70 per student

#### Time

10am to 2pm

#### When?

PD days: (see dates under Professional Development 2003)  
Excursions: Weekdays, Terms 2, 3 and 4



## 8. Busy in the forest for Pre-primary to Year 3

A forest excursion that links with the Department's Early Childhood Forest Pack for the classroom. Includes a sensory trail and an opportunity for students to meet some forest creatures.

### What a teacher had to say about the program:

"A thoroughly enjoyable and educational excursion." – Marcia  
"Fantastic experience – appreciate the fact that it was so hands-on"

### What's involved?

#### Teacher PD day in the forest

Attendance at a PD day is important. It provides teachers with a forest pack, an overview of the day and a chance to experience excursion activities.

#### Pre-visit and post-visit activities at school

Teachers prepare students for the excursion and follow up afterwards using the Department's Forest Pack, 'A forest is a very busy place'.

#### Student excursion

Activities include a sensory, blindfold rope-walk trail, a 'treasure' trail and an animal encounter session.

#### Student numbers

Minimum: 25 students per class

#### Cost

PD day: \$55.00 per teacher (includes lunch and forest pack)  
Excursion: \$7.70 per student Forest Packs: \$11.00 each, if not attending PD day (To order, phone (08) 9334 0437)

#### Time

10am to 2pm

#### When?

PD days: (see dates under Professional Development 2003)  
Excursions: Weekdays, Terms 1, 2 and 3





# 9. "Moodjitch binar nyorps and yorgars"

## Pre-primary to Year 3

NEW!

A new program for Early Childhood students who role-play a day in the traditional life of an Aboriginal child experienced in the beautiful setting of a mia mia in the jarrah forest.

### What's involved?

- ② **Teacher PD in the forest**  
Attendance at a PD day is important. It provides teachers with an overview of the day and a chance to experience excursion activities.
- ② **Pre-visit and post-visit activities at school**  
Teachers prepare students for the excursion and follow up afterwards using the Department of Education's Aboriginal Studies materials.
- ② **Student excursion**  
Activities include singing, dancing, making jewelry and face-painting.
- ② **Student numbers**  
Minimum: 25 students per class
- ② **Cost**  
PD day: \$55.00 per teacher (includes lunch and resources)  
Excursion: \$7.70 per student
- ② **Time**  
10am to 2pm
- ② **When?**  
PD days: (see dates under Professional Development 2003)  
Excursions: Weekdays, Terms 2, 3 and 4



# 10. Six-season walkabout

## for Years 6 & 7

### For Koolangars excursion

Students role-play as a group of Aboriginal people on a six-season walk exploring traditional Aboriginal culture in the jarrah forest. Excursion content supports the Department of Education's Aboriginal Studies materials.

#### What a teacher had to say about the excursion:

*"Every part of the excursion day (from the introductory welcome to goodbye) was highly educational, relevant to what we covered in the classroom, hands-on, interesting and well delivered. I can't compliment you enough!" - Mark*

### What's involved?

- ② **Pre-visit and post-visit activities at school**  
Teachers prepare students for the excursion and follow up afterwards using the Department of Education's Aboriginal Studies materials.
- ② **Student excursion**  
Activities include a six-season forest walk exploring traditional use of plants and animals, stories of The Dreaming, language and artefact making; all with an emphasis on student participation.
- ② **Student numbers**  
Minimum: 25 students per class
- ② **Cost**  
\$7.70 per student
- ② **Time**  
10am to 2pm
- ② **When?**  
Excursions: Weekdays  
PD days for staff of whole school (see under *Professional Development 2003*)





# 11. Koolangars, Corroborees and Kaleeps for Years 4 & 5

Our Aboriginal leaders will take students on a Nyoongar cultural journey through traditional language and ceremony, hunting and fishing skills.

## What teachers had to say about the excursion:

*"This is fantastic. I will be back"* – Steve

*"An extremely worthwhile excursion that complements the classroom experience. Thankyou."* – Diana

*"The leader was terrific and spoke to the students at their level and had a good sense of humour."* – Anna

## What's involved?

### Pre-visit and post-visit activities at school

Teachers prepare students for the excursion and follow up afterwards using the Department of Education's Aboriginal Studies materials.

### Student excursion

Activities include a role-play greeting, preparations for a hunting expedition, a successful hunt and corroboree. Students will build a fishing fence, 'catch' fish and search for turtles in the mud.

### Student numbers

Minimum: 25 students per class

### Cost

\$7.70 per student

### Time

10am to 2pm

### When?

Excursions: Weekdays. PD days for staff of whole school (see under *Professional Development 2003*)



# 12. School Camps in the Forest

Camp under canvas at The Hills Forest Discovery Centre or Patens Brook campsites. Alternatively, stay at the Mundaring Youth Hostel and participate in a number of our educational programs.

## What one teacher had to say about his Year 6 camp:

*"The camp was a highlight of the year. The variety of curriculum-based activities, excellent facilities and professional staff made our stay very worthwhile. My students were especially thrilled with their nighttime experience on the Sense-ational Trail."* – Trevor

## The Hills Forest Discovery Centre camp ground

Suitable for disabled people

### Facilities

12 shady tent sites, camp kitchen including electric BBQs, hot showers and toilets.

### Capacity

one class with adults. 35 maximum.

### Cost

Groups doing Exploring The Hills Forest activities:

\$4.40 per student (age 4 to 15 years) per night

\$8.80 per adult per night (1 free adult for each group of 10 children)

Groups not doing Exploring The Hills Forest activities:

\$6.60 per student per night

\$8.80 per adult per night

## Patens Brook camp site

No vehicle access. Meet the challenge and walk three kilometres to the secluded campsite carrying all camping gear.

### Facilities

Shady camp sites (15 pads), water tank and toilets, 3 fire rings.

### Capacity

one large class

### Cost

\$3.30 per person per night





## Mundaring Youth Hostel

Overlooking the Helena River valley enjoy the comfort and tranquillity of the hostel, one kilometre from The Hills Forest Discovery Centre.

### Facilities

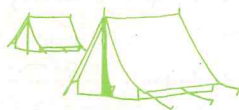
36 beds. Capacity for 50, extra mattresses available. Cooking facilities or have your meals prepared for you.

### Cost

\$11.00 per student per night, \$16.00 per adult per night (one free adult per group), \$50.00 deposit is required when making your booking.

Bookings: Ph (08) 9295 1809 or mobile 0407 081 639

Email: PERTHHILLSYHA@aol.com



## Professional Development 2003

Find out how our programs will assist your students to achieve Curriculum Framework outcomes across all Learning Areas. PD days are a good way for teachers to familiarise themselves with the range of the Department's educational resources and opportunities. They help teachers make the most of their visit to the forest.

*NOTE: Attending a PD day is important for The Forest Detective Trail, Busy in the forest and Picaninny Play (Early Childhood). A PD day is advisable for all other programs.*

### Provides

- An overview of excursion opportunities
- Experience of some excursion activities for students
- A review of EcoEducation packages and resources
- A tour of the jarrah forest and discussion of biodiversity management led by one of the Department's Officers.
- Lunch

### Dates for Exploring The Hills Forest PD

Term 1: Friday 7 March

Term 2: Saturday 10 May

Term 3: Friday 1 August

Term 4: Saturday 1 November

### Cost

\$55.00 per teacher and \$30.00 per student teacher (includes lunch and relevant resources)

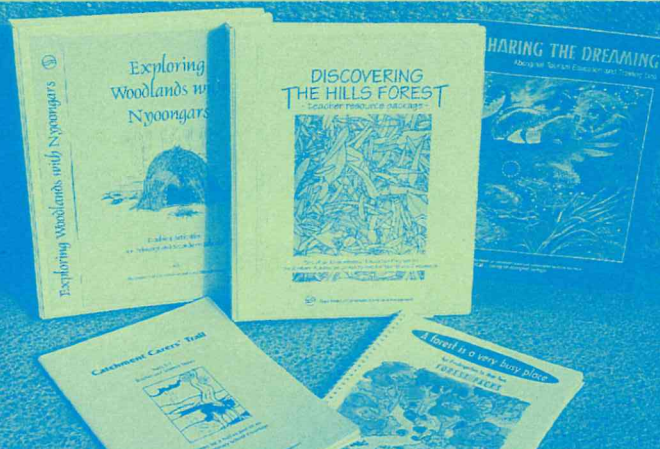
### Time

9am to 3.30pm

### Principals please note

An Opportunity . . . Inservicing at your school

We will visit your school during a student free School Development day to give you an overview of our resources and programs. Call us to make arrangements.





## Whole school staff PD

Find out how our programs provide content for the Curriculum Framework outcomes. PD available to schools on request. The Centre provides a pleasant environment away from school where teachers can plan to enrich their teaching programs.

Also available:

### Whole school staff PD - focus on Aboriginal Culture

#### Cost

\$38.50 per teacher, minimum of 20 teachers, support staff and interested parents.

**Enquire early as School Development and Planning Days are soon booked out.**

## A PD Night to Remember!

### Special Opportunity

**Encounter threatened species; meet a bilby, mala or bandicoot and return to the classroom with resources to bring life to your Science and Society & Environment teaching program.**

An opportunity for teachers to *Be a Nature Conservation Officer* for a night, find out about the Western Shield Schools program and experience the methods being used to bring wildlife back from the brink of extinction.

For teachers who have not yet used the Western Shield Action Pack.

### What's involved?

- Hands-on experience of research monitoring methods - setting and checking traps for forest fauna.
- A chance to meet and question Nature Conservation Officers.
- A close encounter with threatened species. Find out how animals are being bred in captivity and rehabilitated into the wild.
- Free Action Pack and other resources for use in school.

#### Cost

\$27.50 (inc accommodation, meals, resources)

#### Time

5pm to 12 noon next day.

#### When?

Thursday 15 May to Friday 16 May

#### Accommodation

Mundaring Youth Hostel

## Special Offers for Special Events

Join us to celebrate one or more of these special events

### International Year of Freshwater

The *Catchment Carers' Trail* helps students understand the part forests play in maintaining freshwater. One lucky class per month throughout the year - special rate \$5.50. Be the first to book!



### World Environment Day: 5 June

Join us in celebrating how national parks help conserve the amazing biodiversity of Western Australia.

Students will:

- find out how Western Shield is turning the tide of extinctions,
- marvel at marsupials,
- get wrapped in reptiles and
- have hands-on Aboriginal activities and much more
- \$5.50 per student

### National Tree Day: 25 July

All excursion groups will plant a tree to provide more homes for our native animals.

- \$6.60 per student

### National Science Week: 16 to 24 August

Complete the classroom work from our new Forest Detective Trail manual and enter the draw for a **free** excursion during this week. All our programs fulfil curriculum outcomes in the Science Learning Area. Join us during this week for some hands-on Science.

### Biodiversity Month: September

All our programs promote the conservation of biodiversity. Join us and the wildflowers during this month. One lucky class each day will win a Bush Book for their school library.



## Whole school staff PD

Find out how our programs provide content for the Curriculum Framework outcomes. PD available to schools on request. The Centre provides a pleasant environment away from school where teachers can plan to enrich their teaching programs.

Also available:

### Whole school staff PD - focus on Aboriginal Culture

#### Cost

\$38.50 per teacher, minimum of 20 teachers, support staff and interested parents.

**Enquire early as School Development and Planning Days are soon booked out.**

## A PD Night to Remember!

### Special Opportunity

**Encounter threatened species; meet a bilby, mala or bandicoot and return to the classroom with resources to bring life to your Science and Society & Environment teaching program.**

An opportunity for teachers to *Be a Nature Conservation Officer* for a night, find out about the Western Shield Schools program and experience the methods being used to bring wildlife back from the brink of extinction.

For teachers who have not yet used the Western Shield Action Pack.

### What's involved?

- Hands-on experience of research monitoring methods - setting and checking traps for forest fauna.
- A chance to meet and question Nature Conservation Officers.
- A close encounter with threatened species. Find out how animals are being bred in captivity and rehabilitated into the wild.
- Free Action Pack and other resources for use in school.

#### Cost

\$27.50 (inc accommodation, meals, resources)

#### Time

5pm to 12 noon next day.

#### When?

Thursday 15 May to Friday 16 May

#### Accommodation

Mundaring Youth Hostel

## Special Offers for Special Events

Join us to celebrate one or more of these special events

### International Year of Freshwater

The *Catchment Carers' Trail* helps students understand the part forests play in maintaining freshwater. One lucky class per month throughout the year - special rate \$5.50. Be the first to book!



### World Environment Day: 5 June

Join us in celebrating how national parks help conserve the amazing biodiversity of Western Australia.

Students will:

- find out how Western Shield is turning the tide of extinctions,
- marvel at marsupials,
- get wrapped in reptiles and
- have hands-on Aboriginal activities and much more
- \$5.50 per student

### National Tree Day: 25 July

All excursion groups will plant a tree to provide more homes for our native animals.

- \$6.60 per student

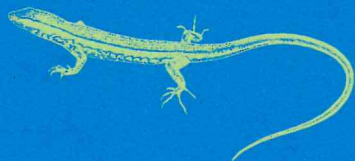
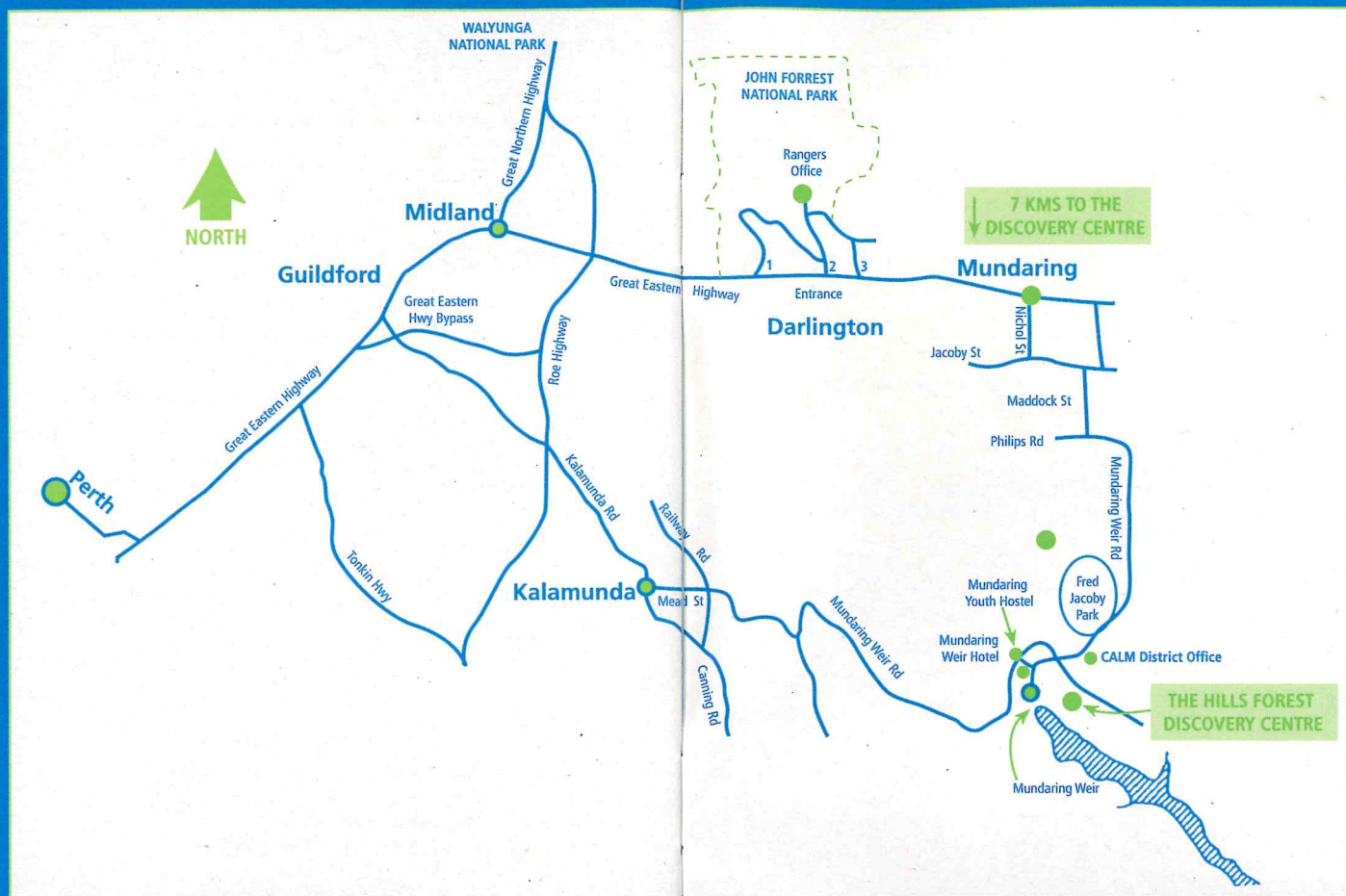
### National Science Week: 16 to 24 August

Complete the classroom work from our new Forest Detective Trail manual and enter the draw for a **free** excursion during this week. All our programs fulfil curriculum outcomes in the Science Learning Area. Join us during this week for some hands-on Science.

### Biodiversity Month: September

All our programs promote the conservation of biodiversity. Join us and the wildflowers during this month. One lucky class each day will win a Bush Book for their school library.

# The way to The Hills Forest Discovery Centre



Tell me and I'll forget;  
show me and I may remember;  
involve me and I'll understand.

— Chinese proverb